

Installing



2023

Our goal is to bring energy, warmth and pleasure into your personal space. It's great to be here.

Safety
instructions 6

Components
and features 7

Assembly
instructions 8

Cleaning and
maintenance 16

Troubleshooting 17

Safety instructions



**We recommend installation
by a licensed electrician.**

Safety instructions

These instructions are provided for your safety. It is very important that they are read completely before beginning the installation of your fixture.

1. Turn off electricity at the main circuit breaker panel before beginning installation.
2. This direct wire fixture must be installed by a certified and licensed electrician. The customer should not attempt to install.
3. This fixture has been rated for up to 18 (K) 5W max 230V E12 base bulbs. To avoid the risk of fire, do not exceed the recommended wattage.
4. If any special control devices are used with this fixture, follow the instructions to assure full compliance with the N.E.C. requirements.
5. This fixture should only be used with a trailing edge dimmer.
6. Mounting hooks and wall anchors are not included. To select the proper type of mounting hook /wall anchor for your wall/ceiling please contact your local hardware store for assistance. If you have any questions, contact a licensed electrical contractor.

Warnings

- Do not mount or unmount the glass globes if the fixture or light bulbs are hot.
- All wires are connected. Do not remove the ceiling light from its packaging by pulling on the power cord, as a bad connection may result.
- Do not use if the light cable/cord is damaged.
- To reduce the risk of fire, electrical shock or personal injury, always turn off the light fixture and allow it and the globes to cool prior to replacing light bulb.
- When mounting the fixture, always use the cotton gloves included.
- Do not touch bulb when fixture is turned on. Do not look directly at lit bulb.
- Keep flammable materials away from lit bulb.

Components and features

FEATURES

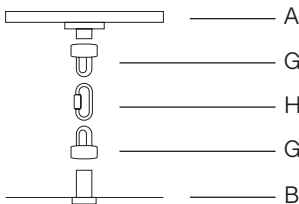
- Hand-crafted in brass
- Mouth-blown glass globes

COMPONENTS

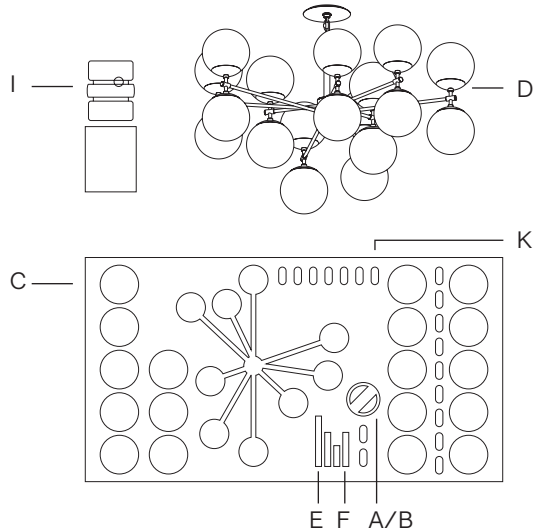
Fixed Mount



Vaulted Ceiling Mount



- A Top ceiling plate (1x)
- B Bottom ceiling plate (1x)
- C Glass globes (18x)
- D Globe caps (18x)
- E Extension rods (3x)
- F Main rod (1x)
- G Loop nuts (2x)
- H Quick-link (1x)
- I Extension nipples (3x)
- J Fixed-mount nipple (1x)
- K 5W LED E12 bulbs (18x)



Tools Enclosed:

Pair of cotton gloves

Not Included

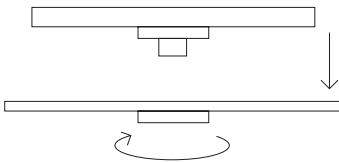
(recommended for installation):
Wall anchors
Screw
Electric drill

Assembly instructions



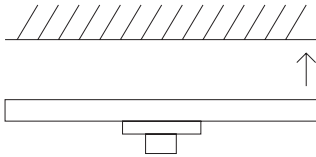
Make sure you cut off power supply at the main fuse box/circuit breaker before commencing any work.

1



Take out the ceiling plate and unscrew the bottom part by turning the retainer ring [B].

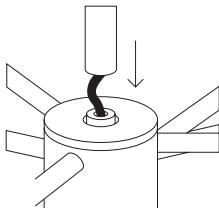
2



Place the top plate [A] flush against the ceiling, pull electrical cords through the hole and mark anchor spots. Drill holes in the marked spots and place anchors in.

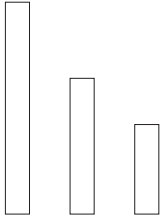
NOTE: Consult your local hardware store for proper anchors.

3



Take the main rod [F], pull the cord through the rod and screw it onto the main fixture onto fixed-mount nipple in the center.

4



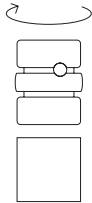
Are you installing extension rods?

YES: Continue to Step 5

NO: Jump to Step 7

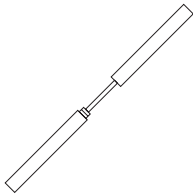
NOTE: If you are hanging the fixture on a vaulted ceiling, please proceed to Step 21!

5



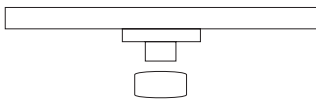
Screw the extension nipple [I] into the main rod and each next extension rod but last.

6



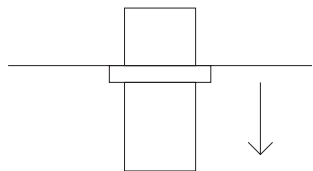
Carefully pull the cord through selected extension rods [E].

7



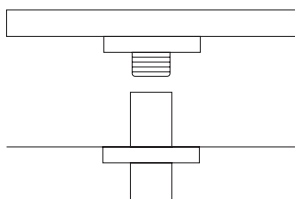
Screw the fixed-mount nipple onto the top ceiling plate [A].

8



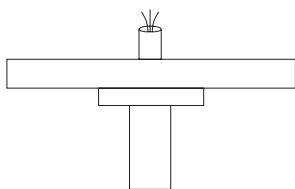
Slide the bottom ceiling plate [B] together with the retainer onto the main rod/extension rod of the fixture.

9



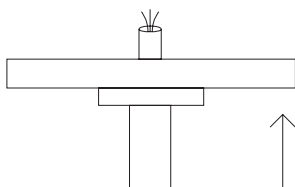
Mount the top ceiling plate [A] onto the rod by screwing it in. Make sure you pull the cord through the middle of the top ceiling plate.

10



Cut the cord to the right length for installation. Prepare wire endings for electrical connections by stripping isolation. Make sure the endings are not frayed.

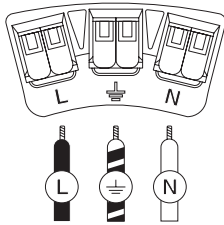
11



Lift the fixture up to the ceiling and make necessary electrical connections.

NOTE: Two people are needed for this and the three following steps.

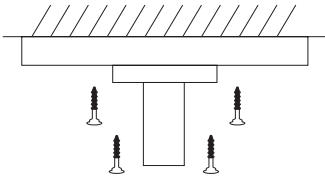
12



Junction boxes may vary depending on location. The diagram on the left shows the most common markings and manner of connecting the cords.

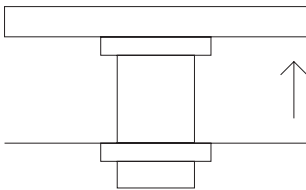
NOTE: We recommend installation by a licensed electrician.

13



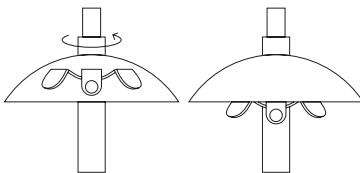
Use the right wall screws to mount the fixture on the ceiling using the anchors inserted in step 2.

14



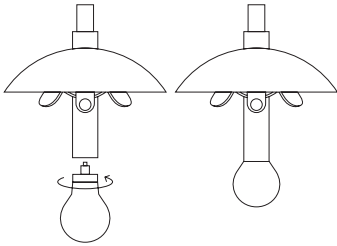
Lift the bottom ceiling plate [B] and use the retainer ring to secure it in its position.

15



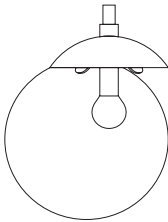
To start mounting the glass globes, turn the cap on the selected arm counterclockwise until it stops. Follow steps 15-19 for each arm.

16



Insert the 18 5W LED E12 bulbs.

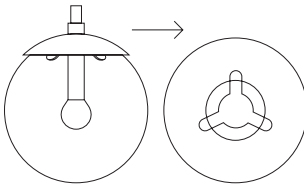
17



Place the globe opening on one of the clamps and slide it on as far as possible. Repeat the same movement for one more clamp.

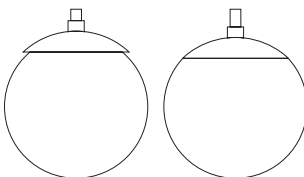
NOTE: Included cotton gloves must be worn when handling glass globes.

18



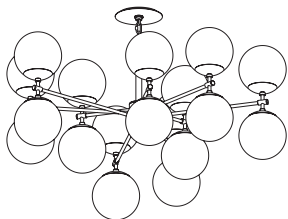
Tilt and slide the globe as in the drawing to hang it on the last clamp.

19



Turn the cap clockwise to secure the globe in position. Repeat for each arm/ globe.

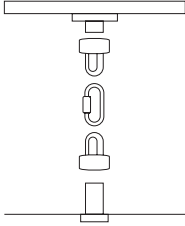
20



Restore power and enjoy your lamp.

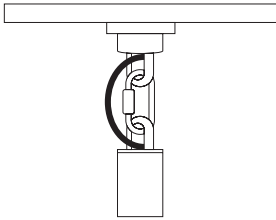
VAULTED CEILING SET UP

21



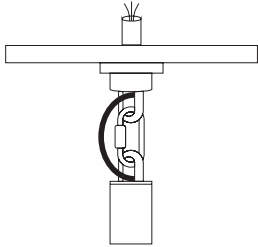
Place the bottom ceiling plate [B] together with the retainer ring on the extension rods, or simply on the main rod if no extensions added. Now, screw in the loop nuts into the rod and onto the top ceiling plate.

22



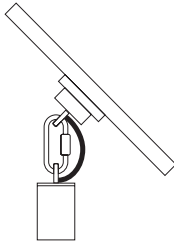
Connect the 2 loop nuts with a quick-link and slide the cord through the loops and the ceiling plate.

23



Cut the cord to the right length for installation. Prepare wire endings for electrical connections by stripping insulation. Make sure the endings are not frayed.

24



Go back to step 11 and continue installing the fixture. The vaulted ceiling set up is ready.

Cleaning and maintenance



Make sure you cut off power supply to the lamp before commencing cleaning operations.

Components	Maintenance	Tools
Brass Frame	Clean every month using a soft cloth, dampened slightly with water. Make sure the frame is dry before switching the lamp back on.	Soft cloth, water
Glass globes	Clean regularly with a soft dry cloth. Clean only the outside of the globe. If especially dirty, use a wet cloth first. Grease can be removed with a gentle glass cleaner.	Soft cloth, Cotton gloves (!)
Light bulbs	Make sure your power supply is off before changing the bulb. Unscrew the globe where bulb needs replacing. Gently remove the bulb by pulling it out and replace with a LED bulb of the same parameters.	LED bulbs, Cotton gloves (!)

NOTE: Please remember, solid brass may tarnish over time. This is a natural process. Make sure you follow our guidelines to preserve the great look of lighting for years.

Troubleshooting

Problem	Possible Cause	Action
Tarnishing	Oxidation of brass is a natural process. Although it is lacquered, its color may change slightly over time.	No action is necessary apart from regular cleaning. See the Maintenance section.
Globe deformations	Mouth-formed glass globes are beautiful but not perfect. The process leaves a slight deformation at the bottom of the globe.	No action is necessary. All globes undergo a quality check. Should you have any doubts, please send us a photo of the deformed globe and we will act accordingly.

NOTE: Dear client, please be assured our team strives to deliver highest quality products. The handmade nature of the products offers a unique aesthetic experience and allows for small imperfections, which is inherent in crafts. If solutions offered below are not sufficient, please do not hesitate and contact our customer service.

Having trouble?

We're sorry to hear that.

Our enlightened objects are designed for longevity.

Each piece is made by hand to ensure the highest possible quality and a unique aesthetic experience.

This means you may encounter small surface imperfections. We like to think of them as whispered greetings from our craftspeople. But should you have any concerns about your product and the previous solutions fail to help, please don't hesitate to email us.