



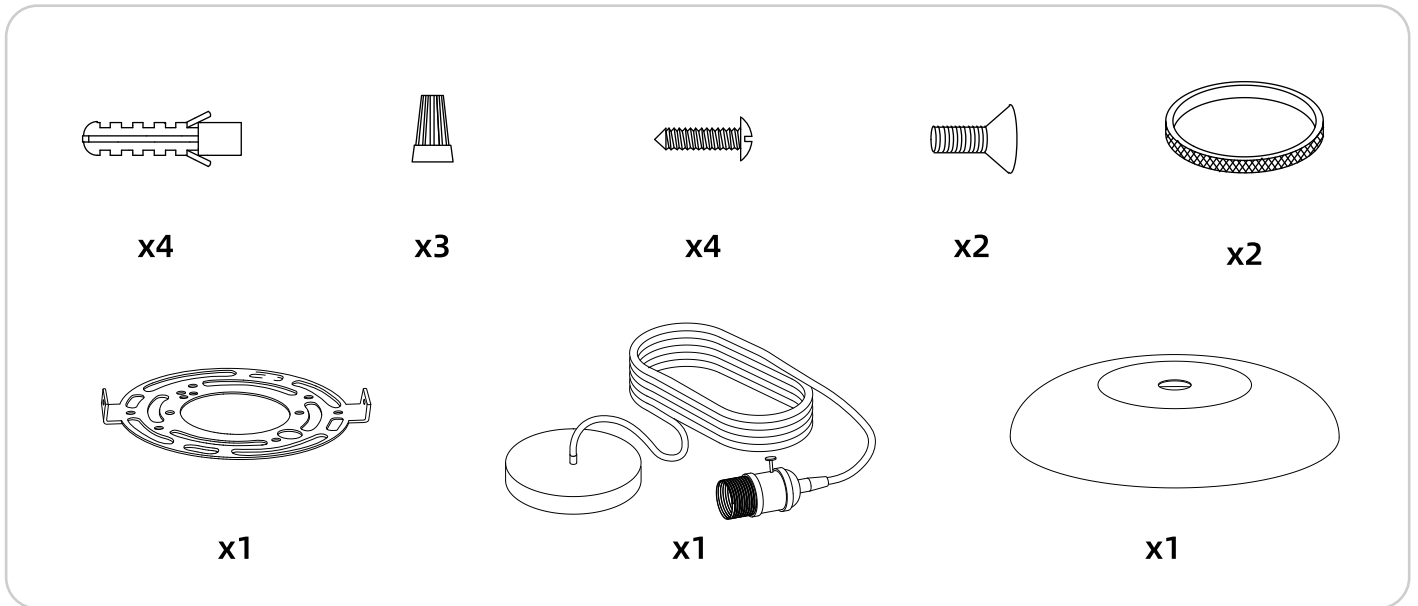
# GLASS PENDANT LIGHT

## INSTRUATION MANUAL

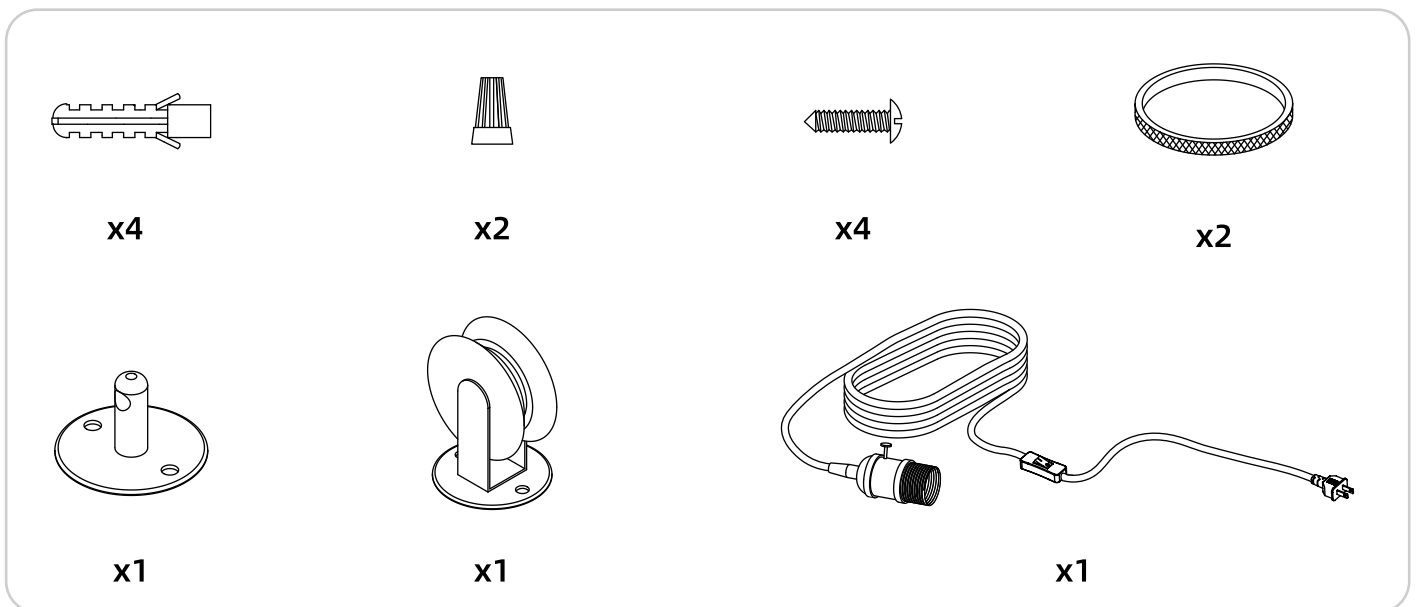
note: If you found the damaged accessories please contact us for free replacement.

# Product Parts

## ■ Classic Model



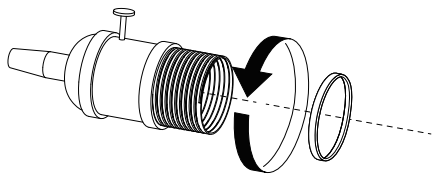
## ■ Plug Model



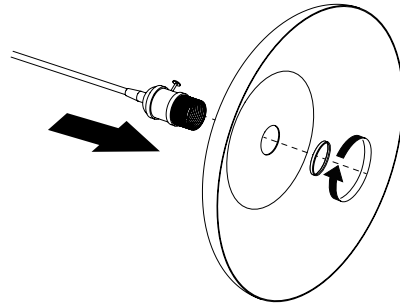
# Lamp shade and switch

---

## ■ Lamp cover assembly

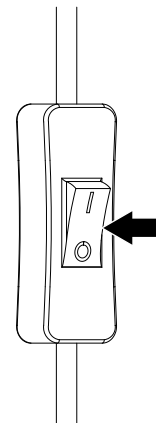
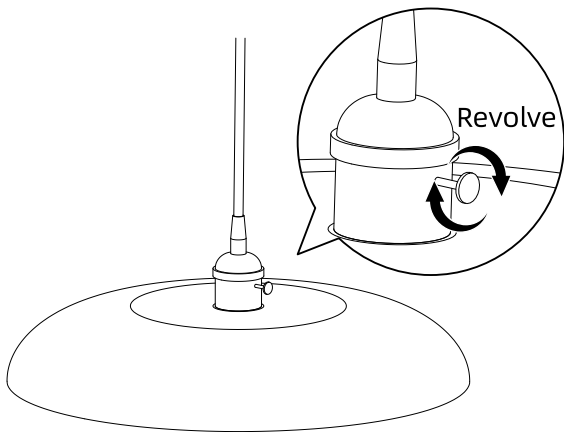


1. Remove the ring



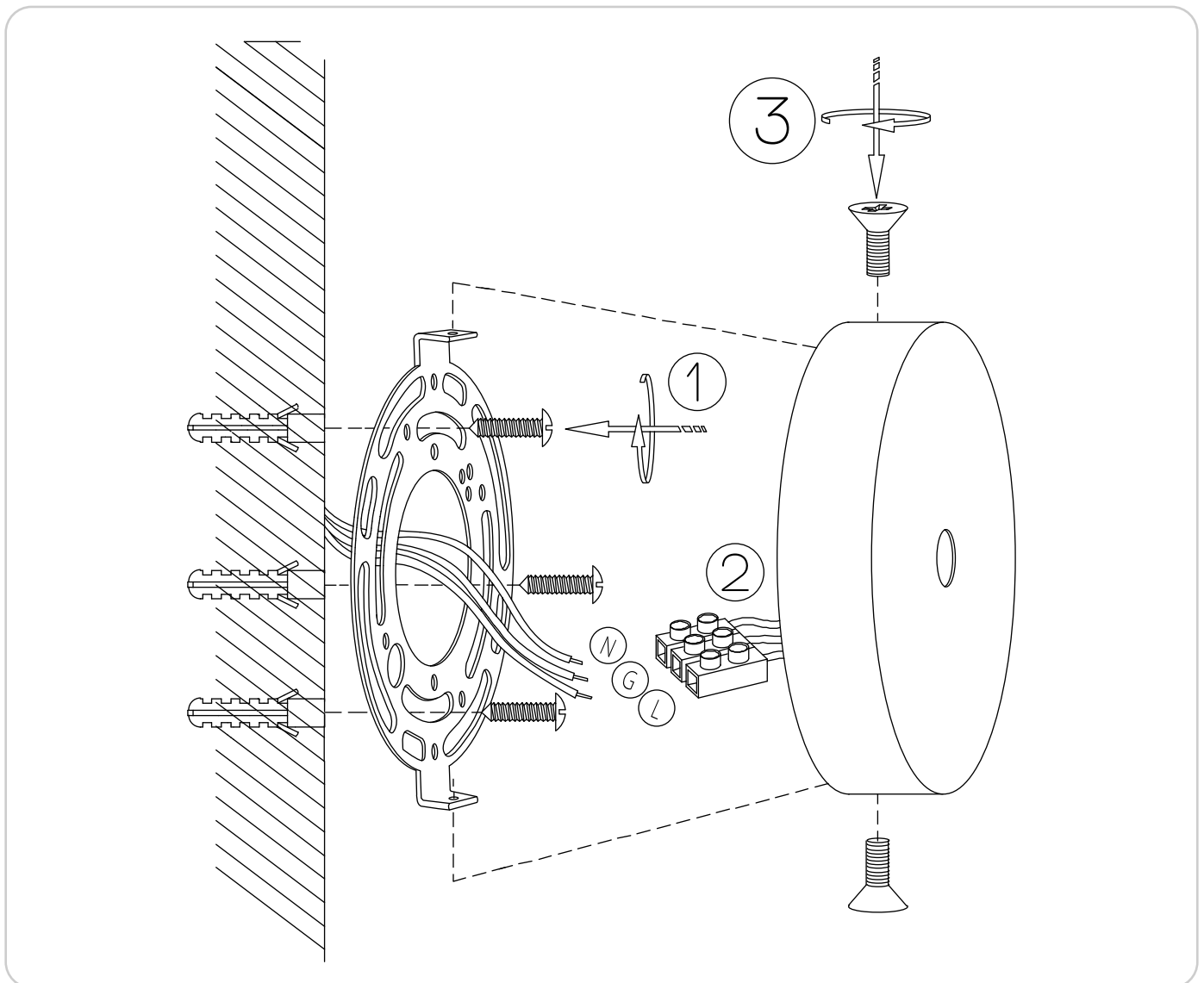
2. Install the lamp cover and tighten the ring.

## ■ On/Off Switch



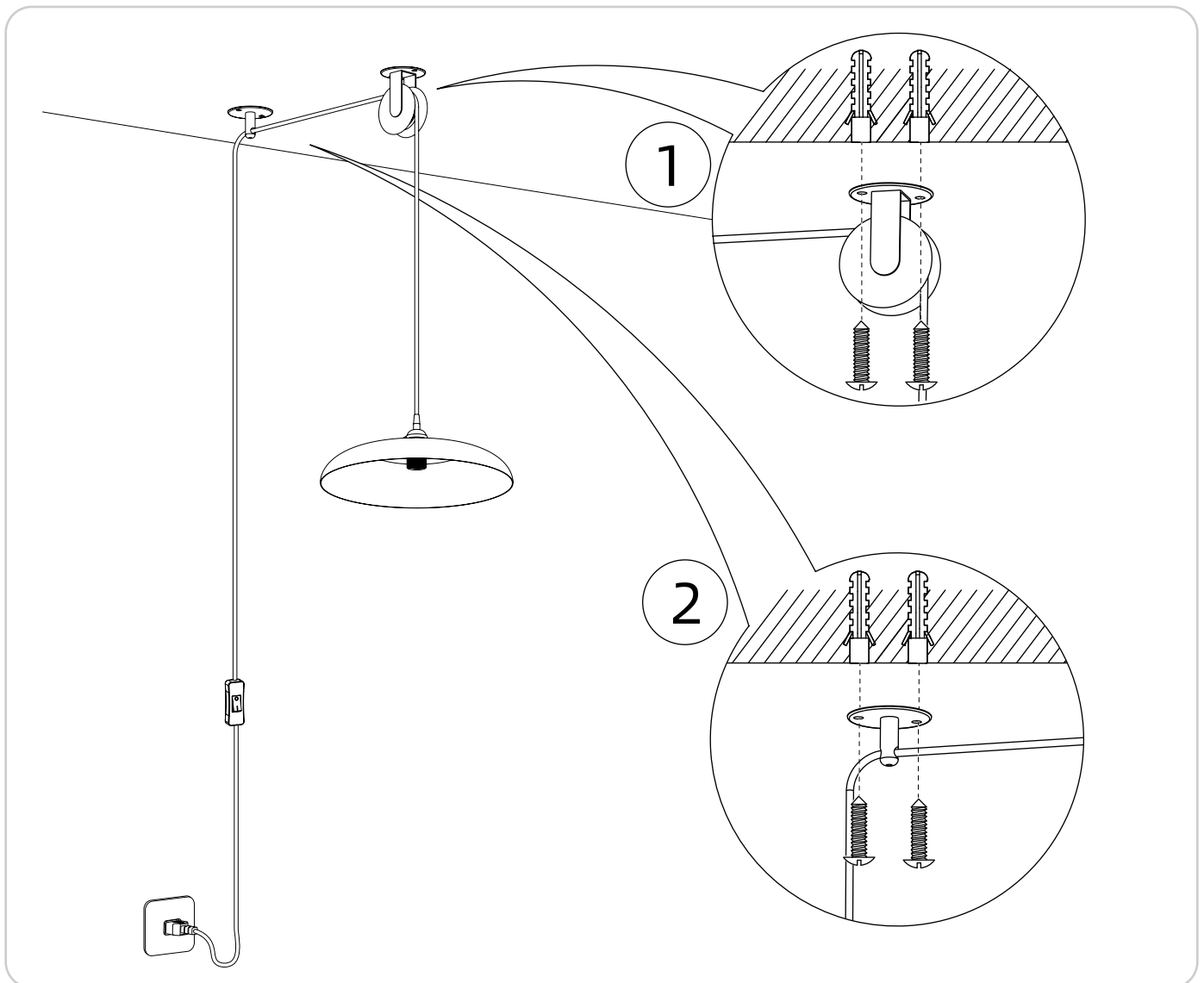
Plug Model only

# Ceiling Base Assembly



- ① Fix the hanging bracket on the ceiling or wall by screws clockwise. (See the picture).
- ② After turning off the power, connect the electric wires to the right terminals.
- ③ Fix the base to the corresponding screw holes in the hanging bracket with screws (Figure).

# Pully And Adjustable Base Assembly (Plug Model Only)



① After selecting the fixed position and height of the lamp, push the expansion tube into the wall, and screw the pulley into and fix it on the wall with screws.

② Take the same method as above to fix the screws of the base.