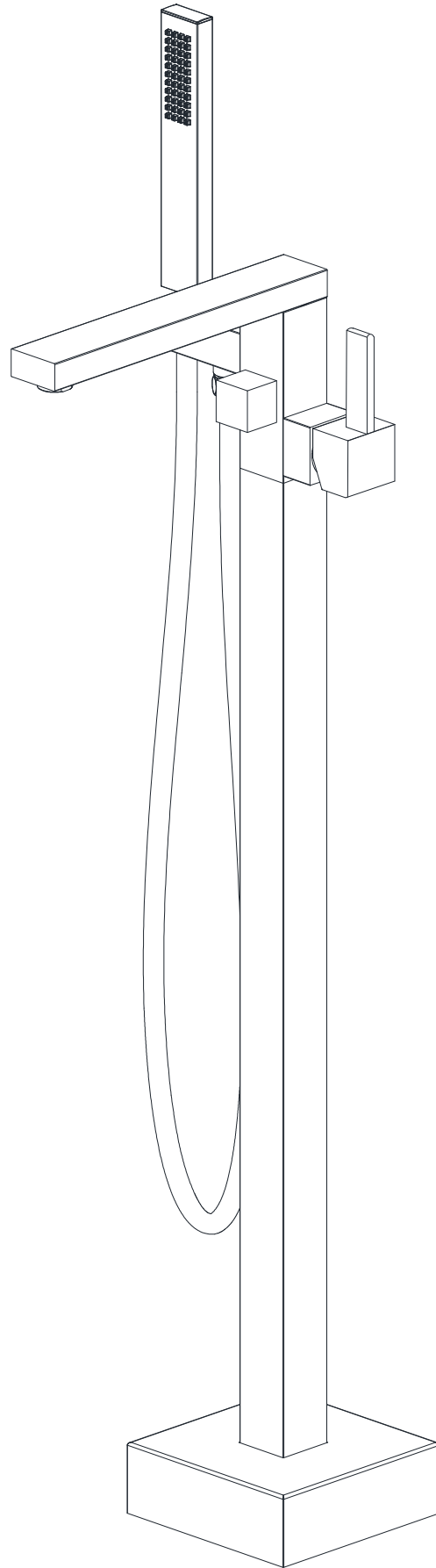


DATASHEET



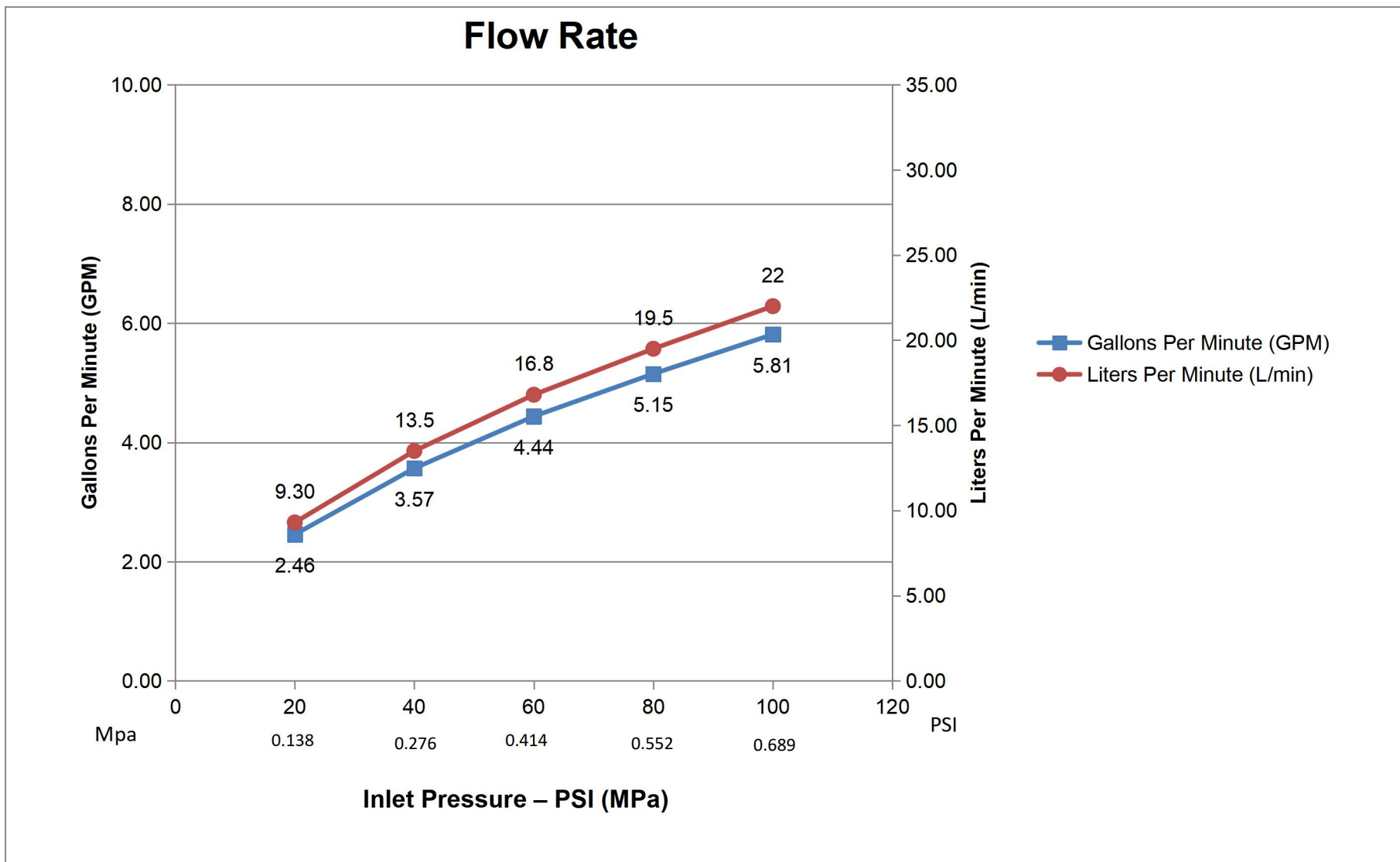
FLOOR MOUNT TUB FILLER FAUCET

MODEL	FINISH
S2157F-CH	CHROME
S2157F-BN	BRUSHED NICKEL
S2157F-MB	MATTE BLACK
S2157F-BG	BRUSHED GOLD

CUSTOMER CARE LINE: +1-866-203-0866

FUNCTIONS AND SPECIFICATIONS

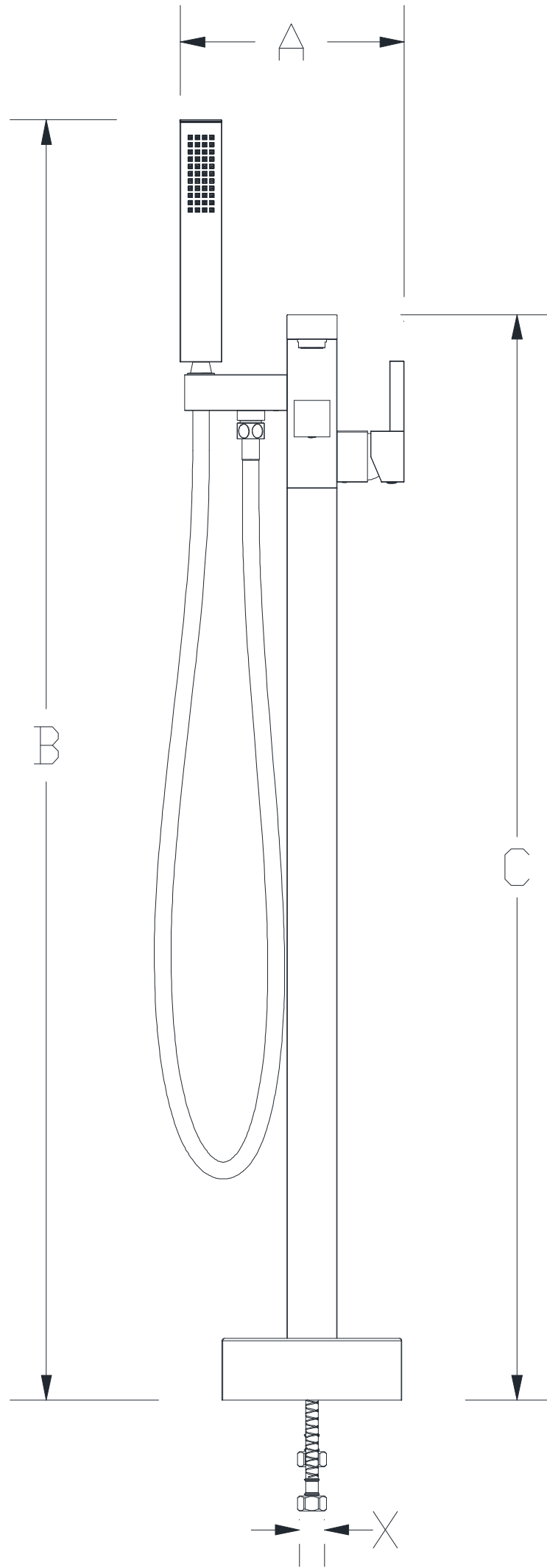
Function	Bathtub Faucet
Feature	Floor Mounted, Freestanding
Theme	Modern, Contemporary
Finish	Chrome/Brushed Nickel/Matte Black/Brushed Gold
Number Of Handles	One
Handle Style	Lever
Primary Material	Brass
Mounting Hardware Included	Yes
Diverter Included	Yes
Handheld Shower Included	Yes
Valve Included	Yes
Hand Shower Material	ASSEMBLY
Shower Hose Included	Yes
Hose Material	ASSEMBLY
Faucet Total Height	40-1/16" [1018mm]
Spout Reach	8-1/2" [215mm]
Spout Height	33" [838mm]
Valve Type	Ceramic Disc
Handle Material	Metal
Net Weight	9.39 lbs [4.26KG]
Gross Weight	11.29 lbs [5.12KG]
Working Water Press	29~116PSI [0.2 ~0.8 MPa]
Spout Max Flow Rate	4.44GPM @60PSI [16.8L/min @0.414MPa]
Hand Shower Flow Rate	1.8GPM@60PSI [6.8L/min@0.414MPa]
Packing Box Size	29-15/16" x 13-3/16" x 3-5/32" [760mm x 335mm x 80mm]



DIMENSIONS

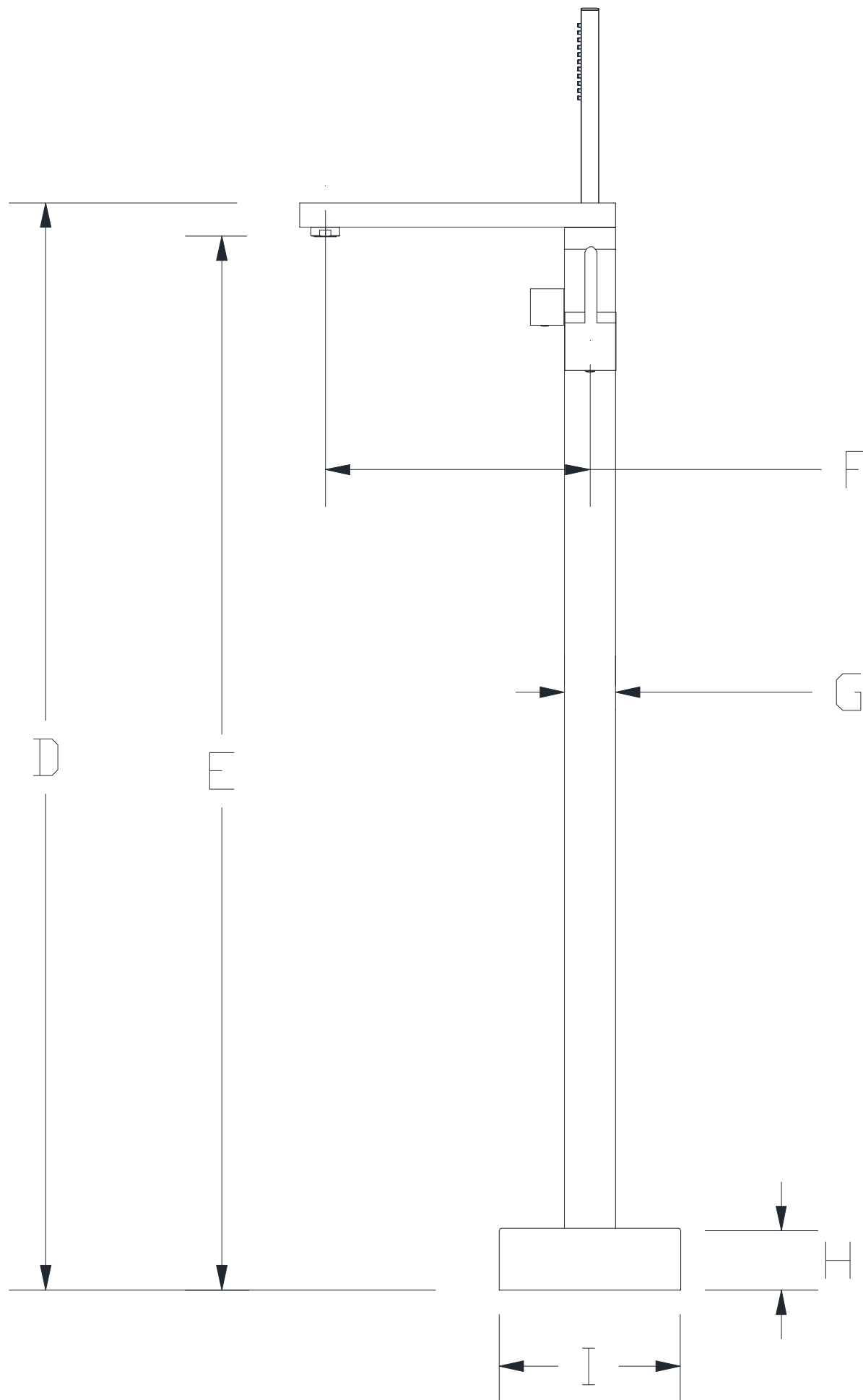
Code	Dimensions - Inch	Dimensions - mm
A	6-21/32"	169
B	40-1/16"	1018
C	34-1/4"	870

Region	Code	Specifications
US	X	G1/2"
Europe	X	G1/2"
UK & Other	X	G1/2"



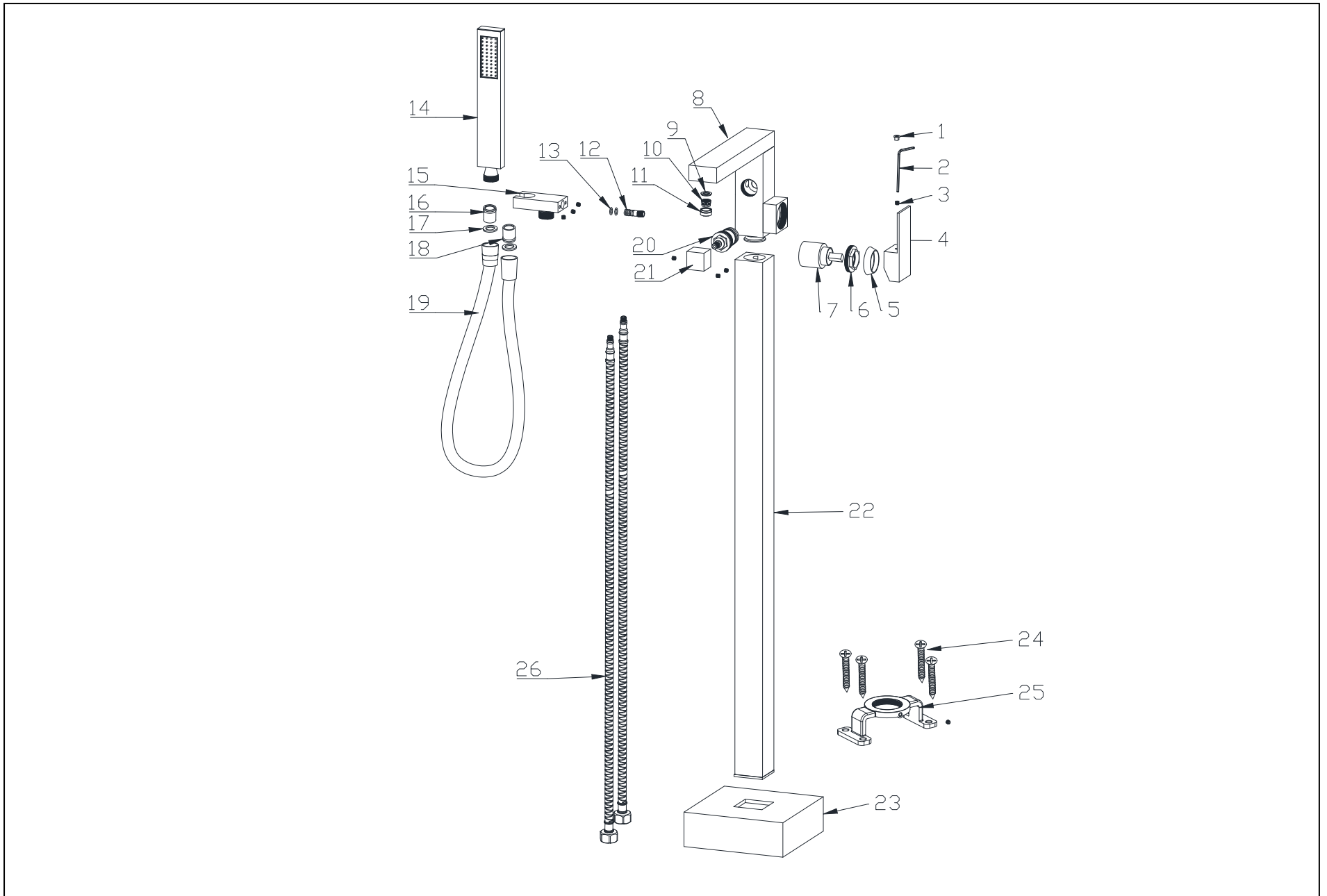
FRONT VIEW OF FAUCET

Code	Dimensions - Inch	Dimensions - mm
D	34-1/4"	870
E	33"	838
F	8-1/2"	215
G	1-5/8"	42
H	2"	50
I	5-7/8"	150



RIGHT VIEW OF FAUCET

EXPLOSION DIAGRAM



NO	ITEM NAME	MATERIAL	QTY	PART NO.	NO	ITEM NAME	MATERIAL	QTY	PART NO.
1	Screw Cover	ABS	1	PSA00002XX	14	Handheld Shower	ASSEMBLY	1	PHS00002XX
2	Allen Wrench2.5mm	Fe45#	1	PSA00003XX	15	Hand Shower Holder With Elbow	ASSEMBLY	1	PHH32180XX
3	Set Screw	SUS304	7	PSC05050XX	16	Check Valve	ASSEMBLY	1	PAE00043XX
4	Handle(Lever)	Zn Alloy No.3	1	PHD00007XX	17	Rubber Washer	NBR	2	PRW19020XX
5	Flange	HPB59-1	1	PFC37125XX	18	Flow Restrictor	ASSEMBLY	1	PAE00043XX
6	Bonnet	HPB59-1	1	PSC37125XX	19	Shower Hose	ASSEMBLY	1	PFH00015XX
7	35#Cartridge	ASSEMBLY	1	PCT35000XX	20	Diverter Cartridge	ASSEMBLY	1	PCT21390XX
8	Valve Body	HPB59-1	1	PVB21510XX	21	Diverter Knob	Zn Alloy No.3	1	PHD00001XX
9	Flat Mat	NBR	1	PRW23165XX	22	Stand Column	SUS304	2	PPI21580XX
10	Aerator	ABS	1	PAE00015XX	23	Escutcheon	SUS304	1	PFC21580XX
11	Aerator Cover	SUS304	1	PAE00003XX	24	M6X50 Screw	SUS304	4	PSC06050XX
12	Nipple	HPB59-1	1	PCN21580XX	25	Mounting Base	SUS304	1	PEC00002XX
13	O-Ring	NBR	2	POR11020XX	26	Supply Hose	ASSEMBLY	2	PFH00092XX



North America	Asia	Europe
SUMERAIN INTERNATIONAL GROUP INC	HONGKONG SUMERAIN SANITARY INDUSTRY CO., LIMITED	SUMERAIN EUROPE SUPPORT TEAM
Add: 1226 NORTH KING ST NUM 522 WILMINGTON, DE 19801 United States	Add: FLAT/RM 3B 3/F BANK TOWER NOS.351&353 KING'S ROAD NORTH POINT,HONGKONG	Add: Flottwellstr.15 10785 Berlin, Deutschland
Tel: +1(866)203-0866	Tel: +86-750-2731579	Tel: +49 (0)30/23975898
E-mail: supports@sumerain.us	E-mail: supports@sumerain.com	E-mail: de@sumerain.com