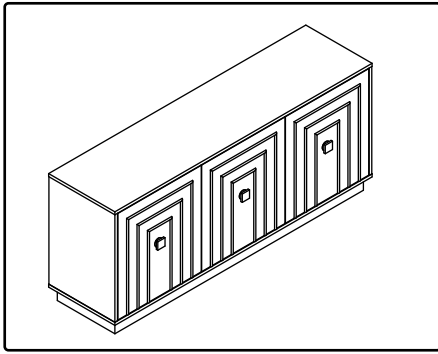


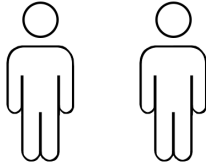
ASSEMBLY INSTRUCTIONS



+ Do Not Use
Power Tools

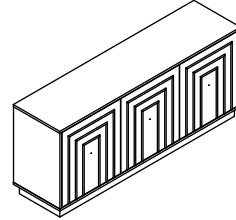


+ Suggested
Adults



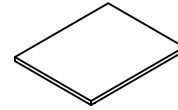
+ Parts Included

①



x1

②



x3

NOTE:

- 1 Read instructions cover to cover.
- 2 Save all packaging until assembly is completed.

+ Hardware Included



Anti-over tag
2PCS



Expander
M6x55 2PCS

1 IMPORTANT SAFETY INFORMATION

Do not assemble the product if any of the following parts arrived damaged:

- Part ① - Table top
Part ② - Shelf

2 IMPORTANT ASSEMBLY INFORMATION

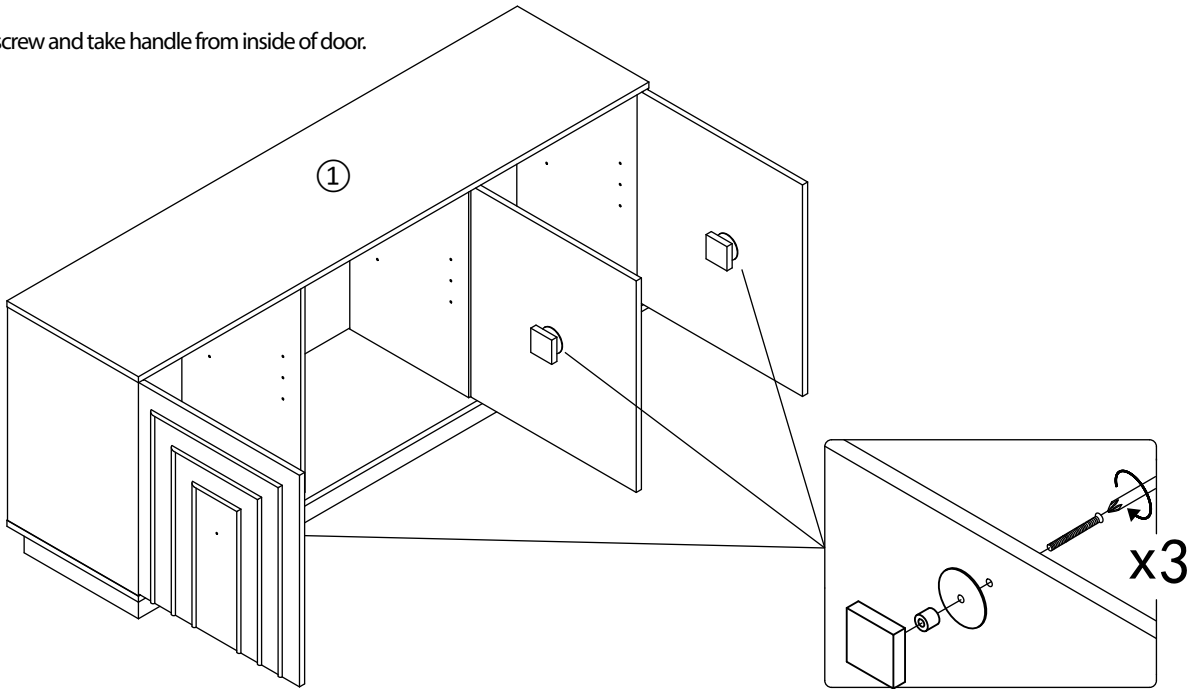
- Assembly Step① Unscrew screw and take handle from inside of door.
Assembly Step② Put handle in place and fasten tight on door.
Assembly Step③ Put shelf #2 in place of cabinet.
Assembly Step④ Put anti-over tag on the back
Assembly Step⑤ Put the expander screw on your wall and fasten tip-over tag if any necessary.

*Warning: Do not over tighten screws, or it could damage the Table Top.

ASSEMBLY INSTRUCTIONS

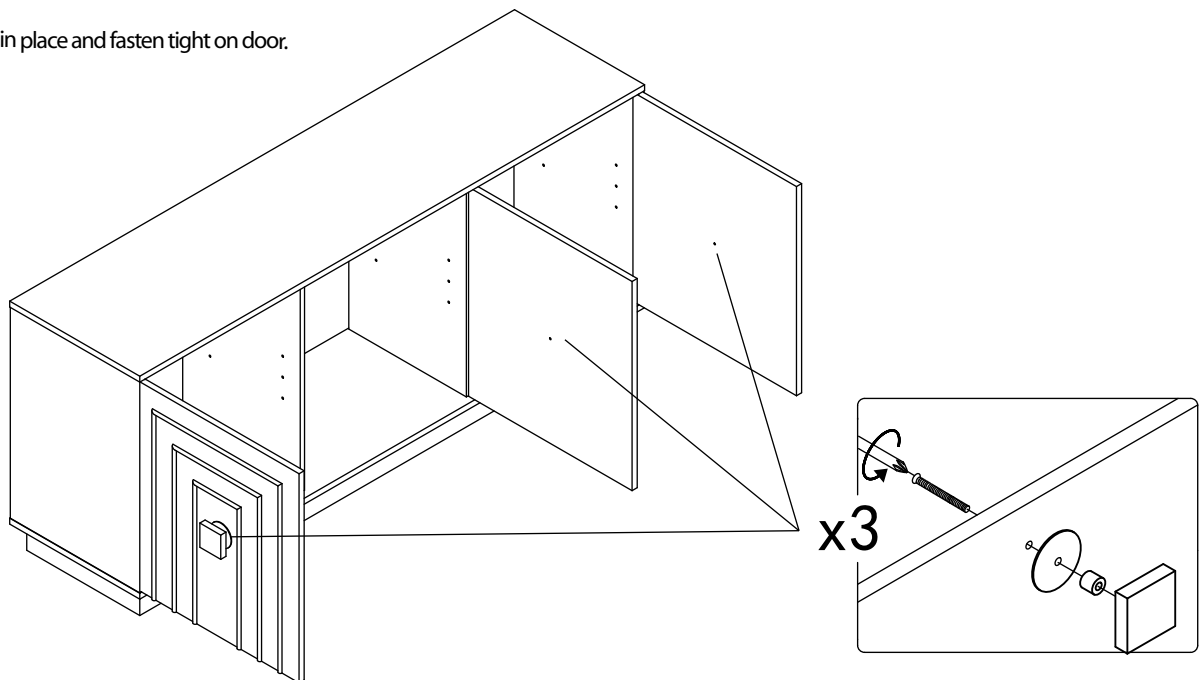
1

Unscrew screw and take handle from inside of door.



2

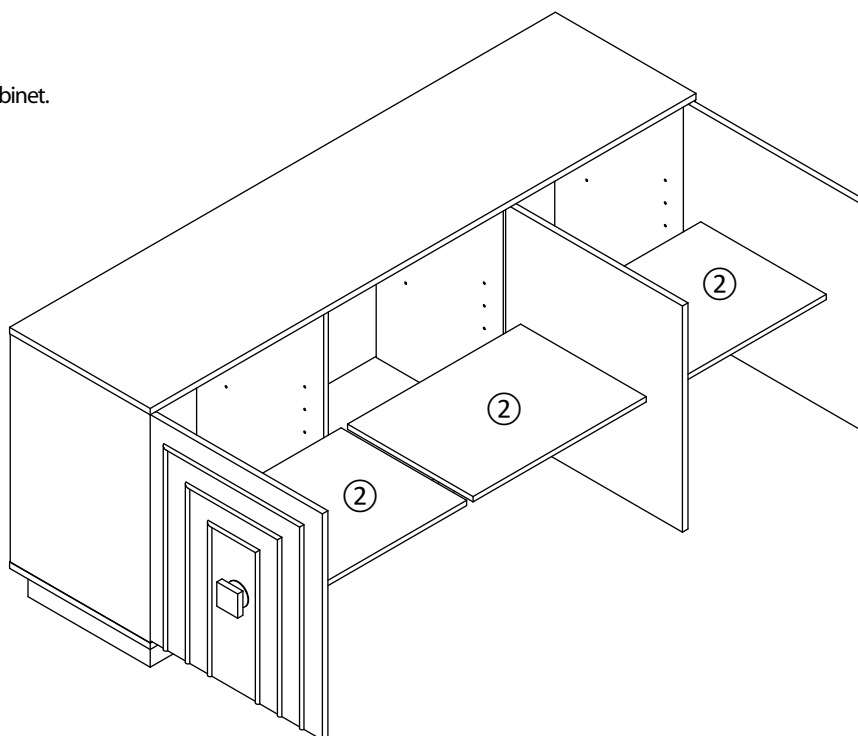
Put handle in place and fasten tight on door.



ASSEMBLY INSTRUCTIONS

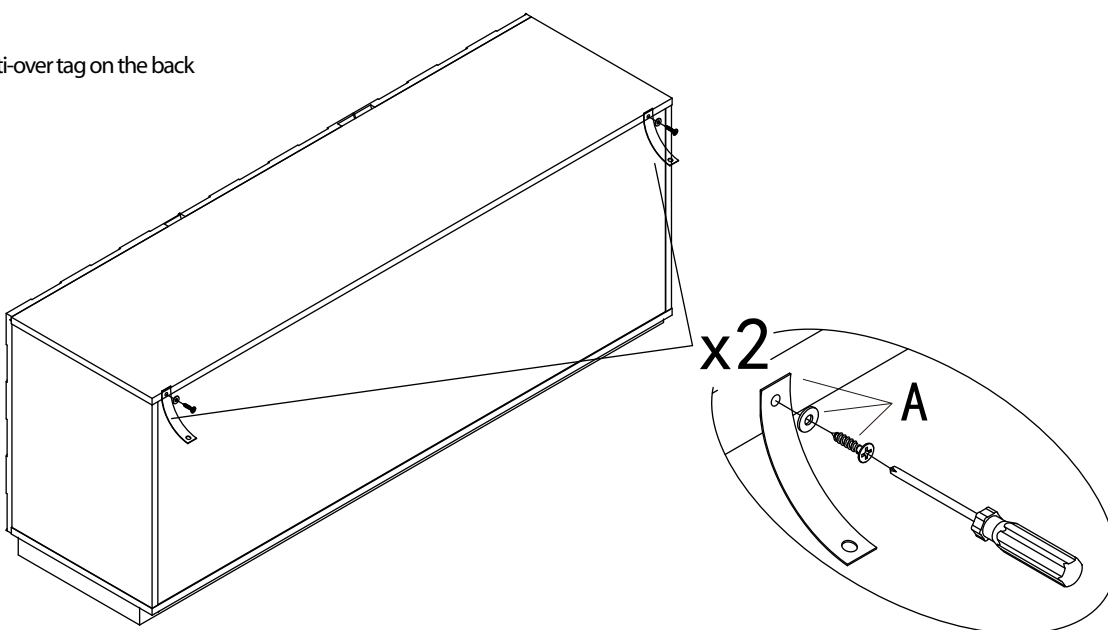
3

Put shelf #2 in place of cabinet.



4

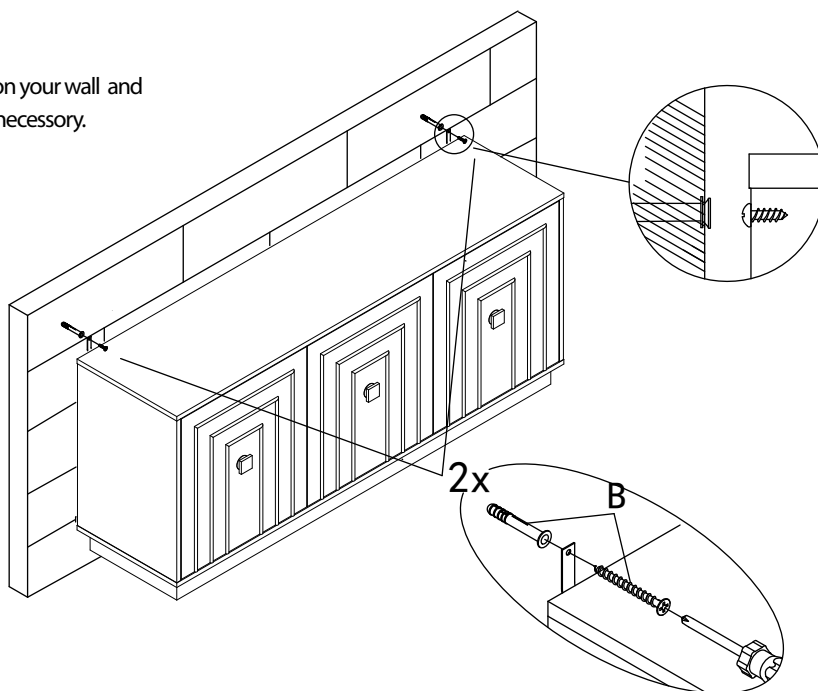
Put anti-over tag on the back



ASSEMBLY INSTRUCTIONS

5

Put the expander screw on your wall and fasten tip-over tag if any necessary.



ASSEMBLY INSTRUCTIONS

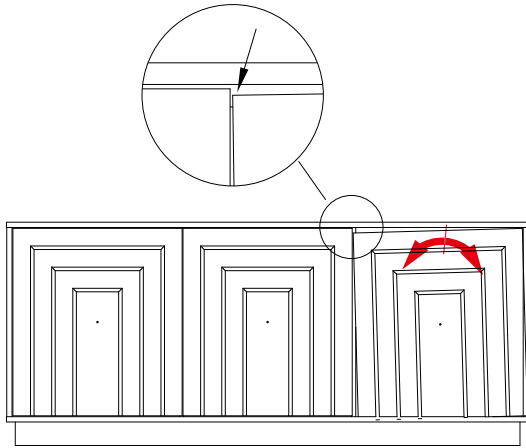


Hinges Adjustment Facilities

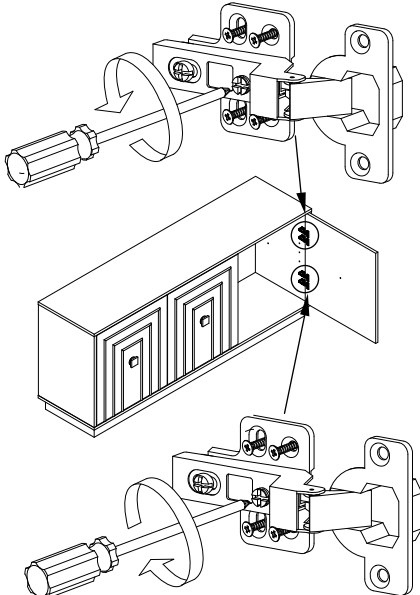
Warning : To ensure all hinges continue to work smoothly, pls check them regularly and adjust them necessary.

Question 1

How to adjust the two door are not aligned and lower with screw adjustment?



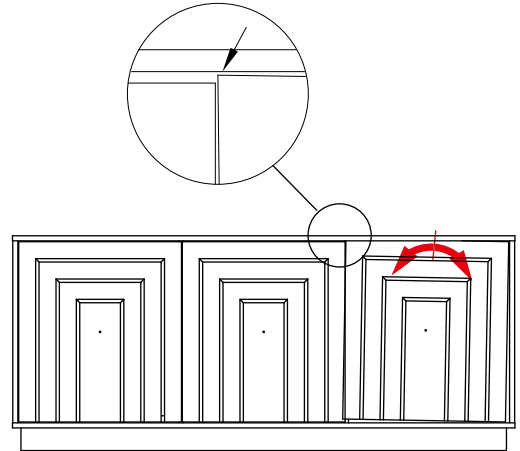
Turn left middle bolt adjuster properly until door is balanced



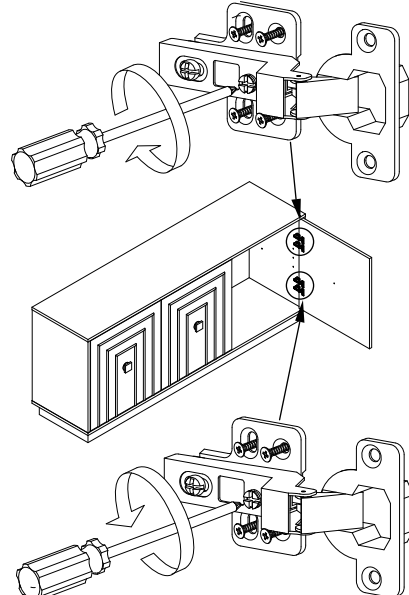
Turn right middle bolt adjuster properly until door is balanced

Question 2

How to adjust the two door are not aligned and higher with screw adjustment?



Turn right middle bolt adjuster properly until door is balanced



Turn left middle bolt adjuster properly until door is balanced

ASSEMBLY INSTRUCTIONS

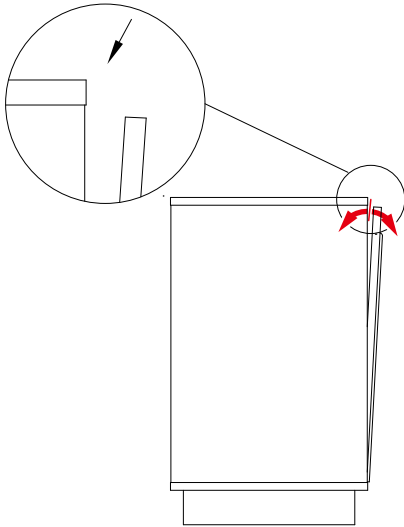
Hinges Adjustment Facilities



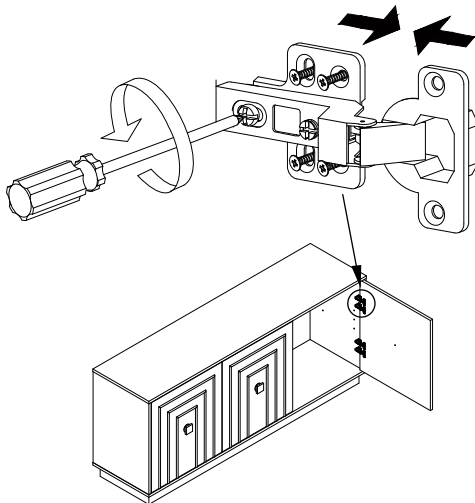
Warning : To ensure all hinges continue to work smoothly, pls check them regularly and adjust them necessary.

Question 3

How to adjust the door gap at side with screw adjustment?

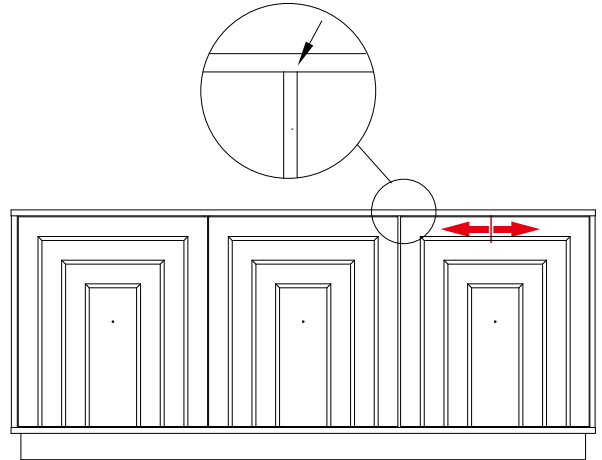


Turn left the adjuster properly until door is balanced

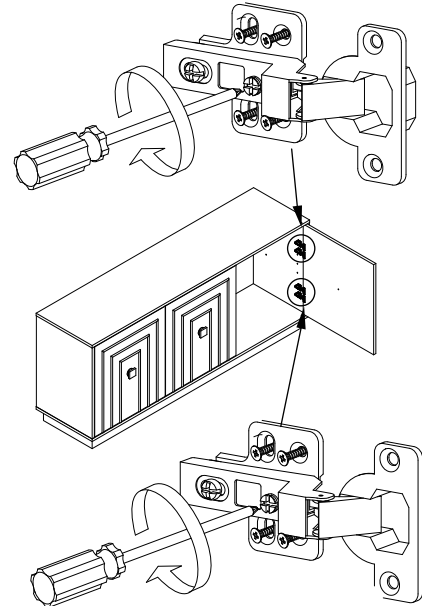


Question 4

How to adjust the door gap at front with screw adjustment?



Turn right middle bolt adjuster properly until door is balanced



Turn right middle bolt adjuster properly until door is balanced