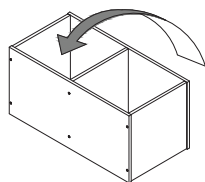
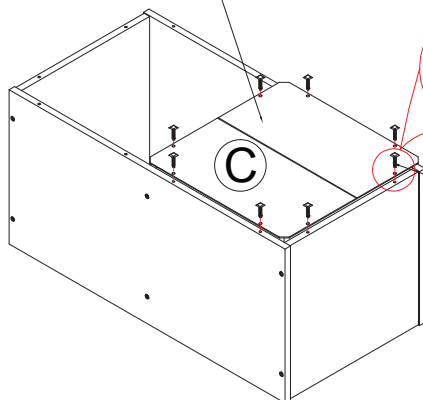


3

TURN 180°

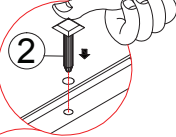


unfinished surface

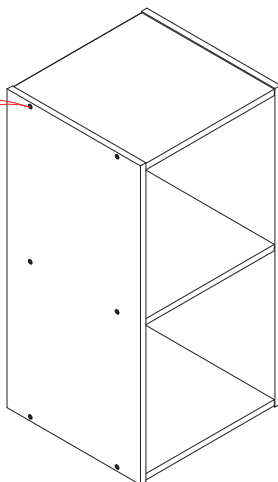
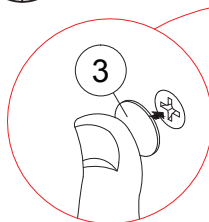


C

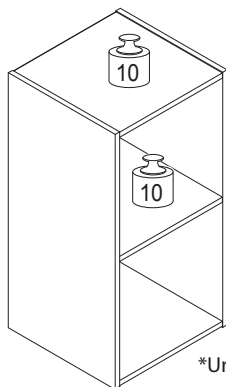
(2)x8pcs



4



Recommended Maximum Weight



*Unit in Pound(lbs)

WARNING:

>This unit has been designed to support the maximum loads shown. Exceeding these load limits could cause sagging, instability, product collapse, and/or serious injury.

>DO NOT allow children to climb on unit.

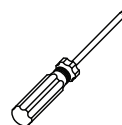
>Put heavier items on lower shelves.

00:15

Approx. 15 minutes



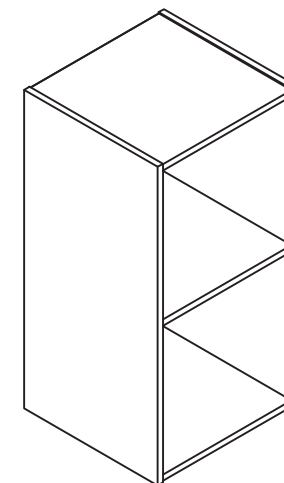
Recomm. 1 Person



Tools Required

Assembly Instruction

2 CUBE CABINET






Customer Support

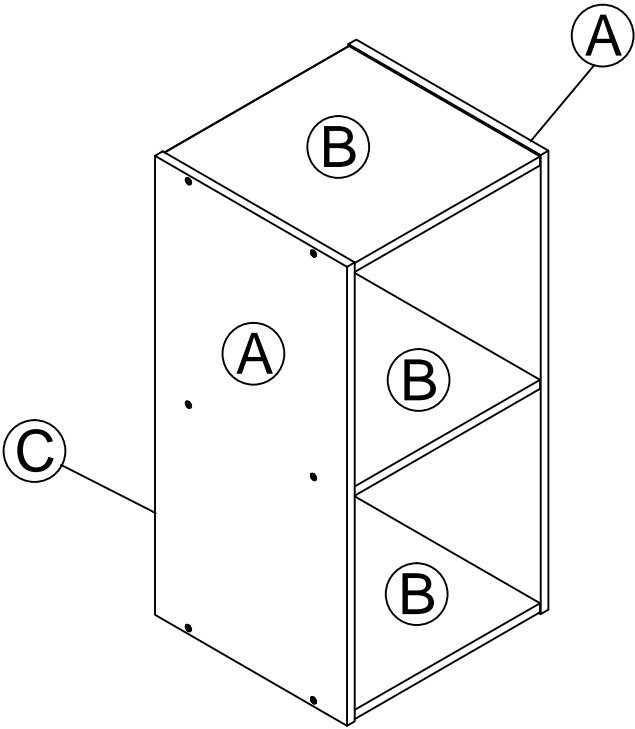
NEED HELP? For replacement requests or product inquiries, please contact our Customer Service Team by emailing us. Thank you for selecting!



HARDWARE & PARTS LIST

| NO | HARDWARE LIST | QTY |
|----|--|-------|
| 1 | SCREW  | 12pcs |
| 2 | BACK PLUG  | 8pcs |
| 3 | SCREW COVER CARD  | 12pcs |

| NO | PARTS LIST | QTY |
|----|-------------|------|
| A | SIDE PANEL | 2pcs |
| B | SHELF PANEL | 3pcs |
| C | BACK PANEL | 1pc |



USEFUL HINTS BEFORE YOU START:

1. Read each step carefully before starting.
2. It is important that each step is performed in correct order to avoid difficulties.
3. Identify, sort and count the parts before assembly.
4. Assemble your furniture on packaging cardboard to prevent scratch or damage.
5. Clean the product with mild cleanser using soft damped cloth. Do not use harsh or abrasive cleanser.
6. Using incompatible hardware might cause damage to product.

ASSEMBLY INSTRUCTIONS

BEFORE YOU BEGIN, PLEASE READ ASSEMBLY INSTRUCTION CAREFULLY, FOLLOW THEM STEP BY STEP.

