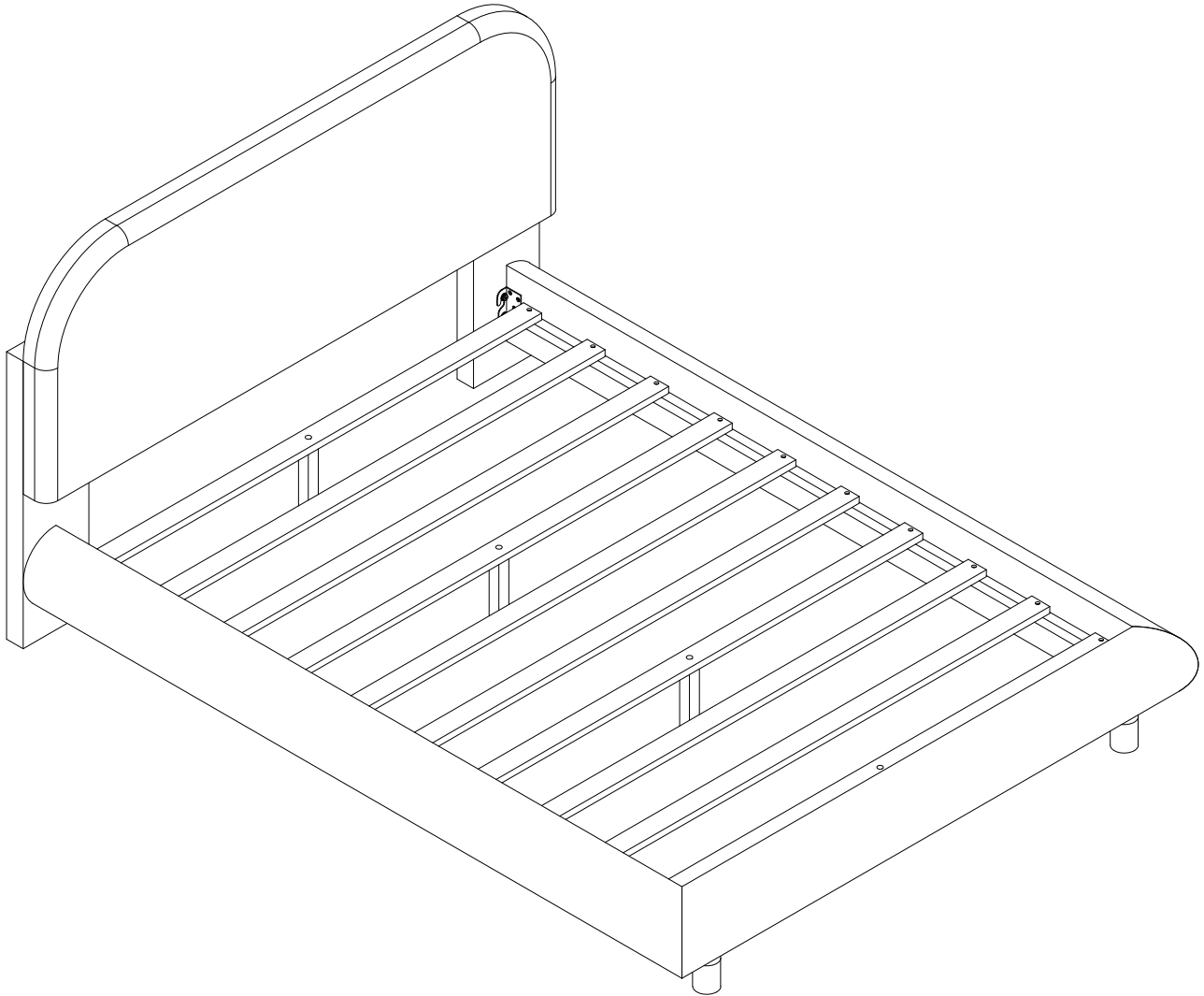
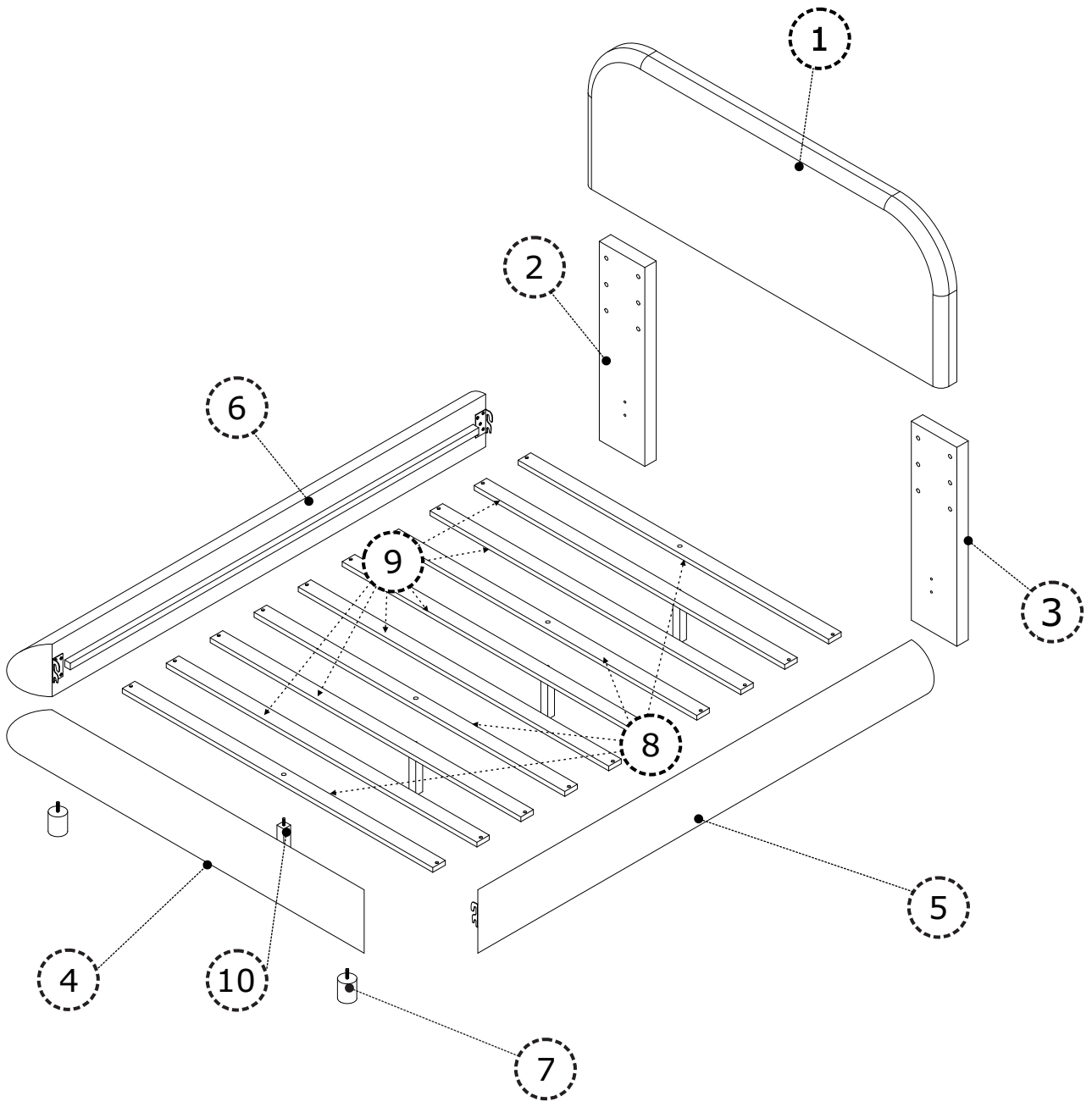


WF312559
WF312560



ASSEMBLY INSTRUCTIONS

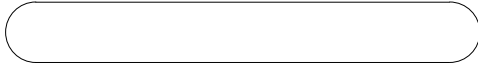


PARTS

Check that you've received
all parts listed below.

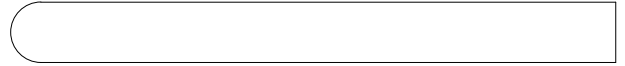
BOX: 1/2
WF312559

4 x 1



Foot Board

5 x 1



Side Board Right

6 x 1



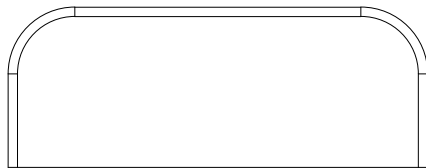
Side Board Left

PARTS

Check that you've received all parts listed below.

BOX: 2/2
WF312560

1 x 1



Head Board

2 x 1



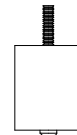
Head Leg left

3 x 1



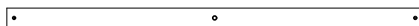
Head Leg Right

7 x 2



Legs

8 x 4



Slats

9 x 6



Slats

10 x 4

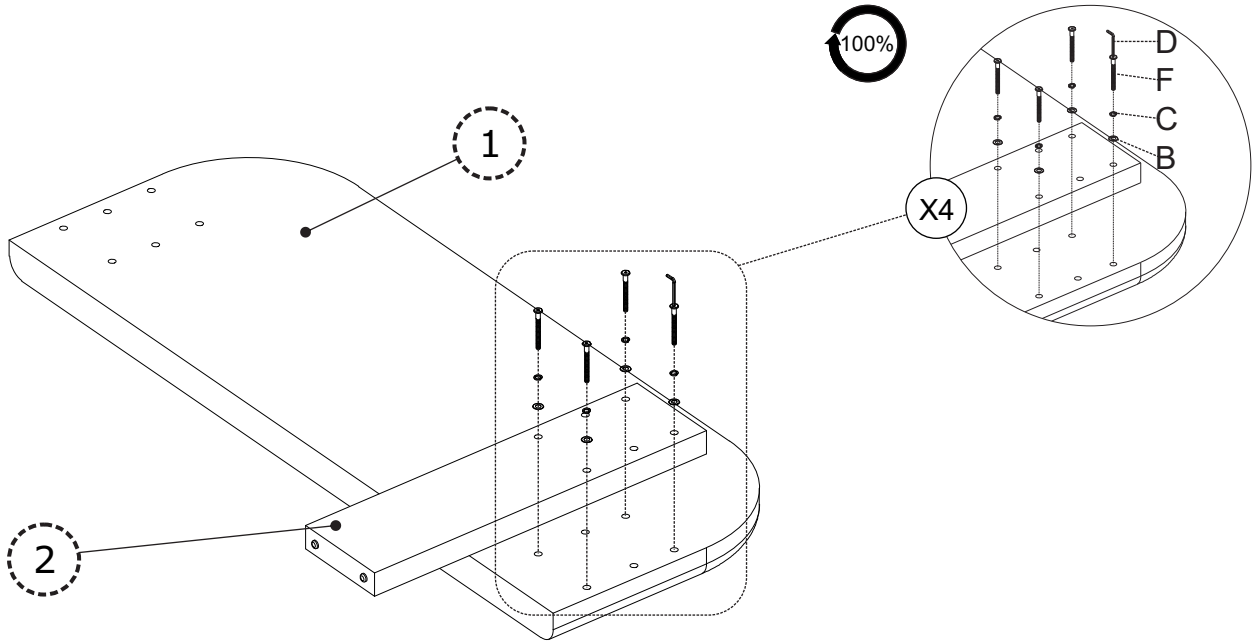
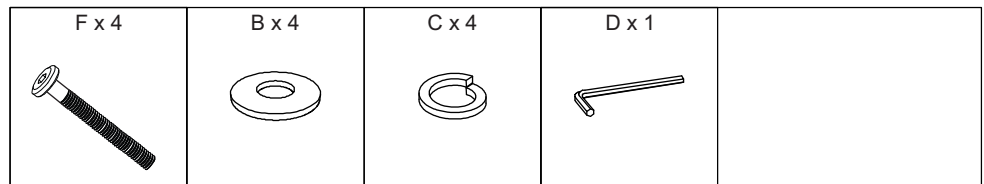


Support Legs

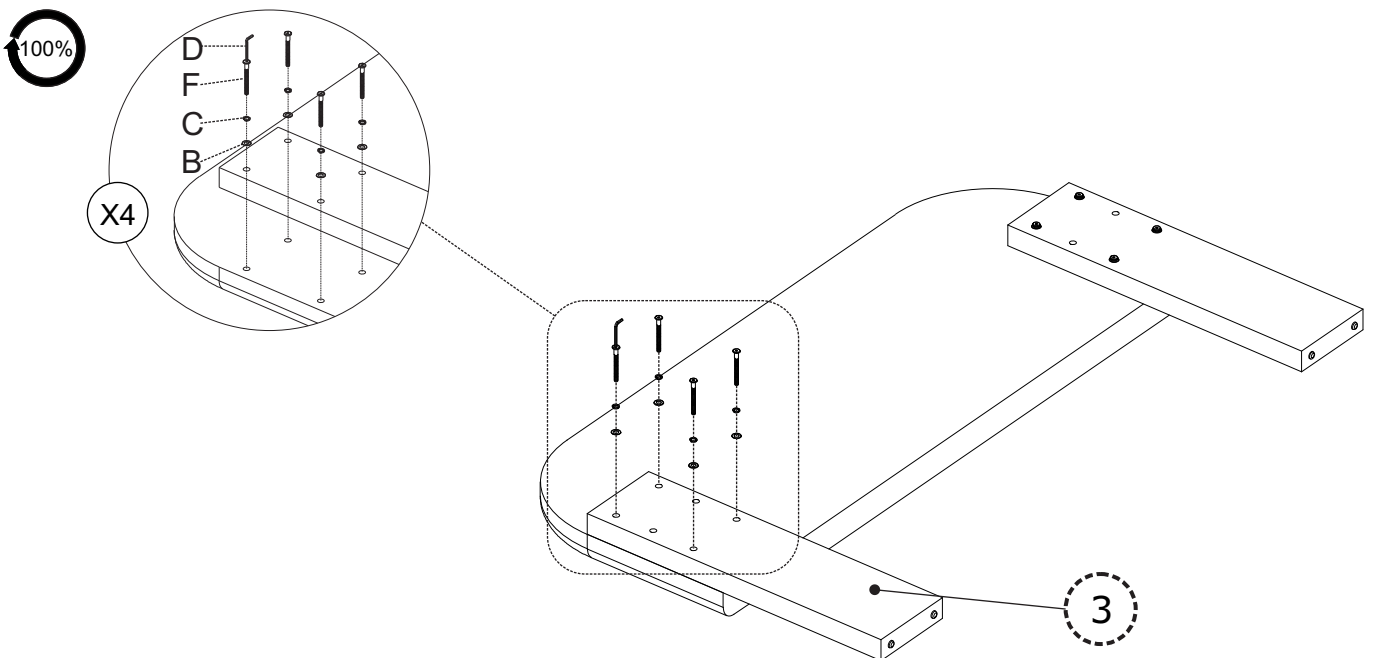
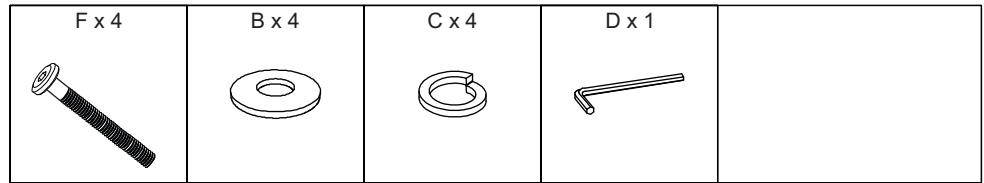
Hardware



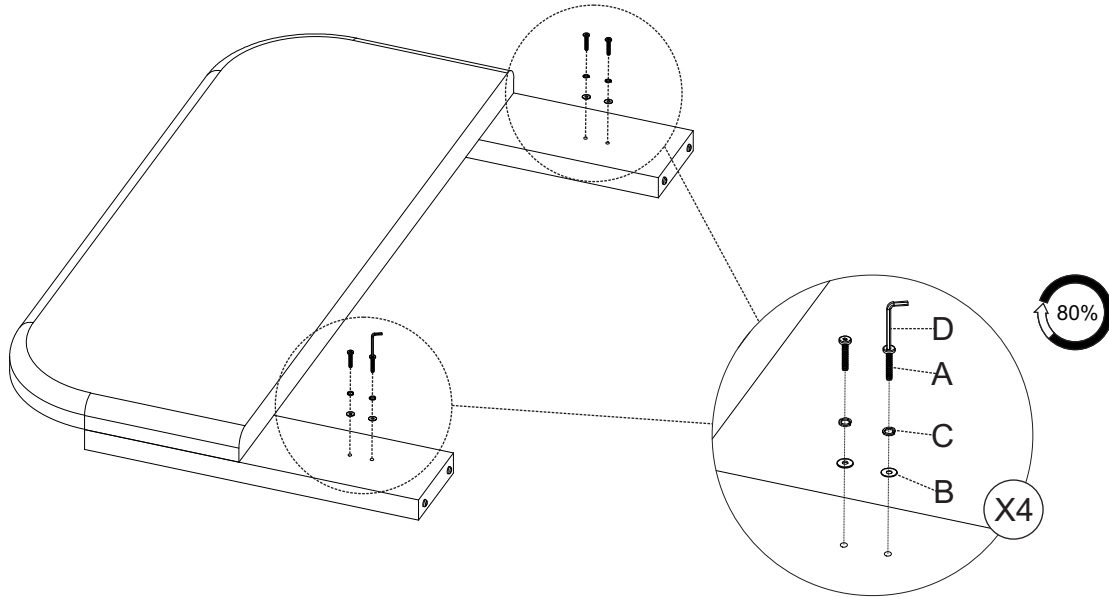
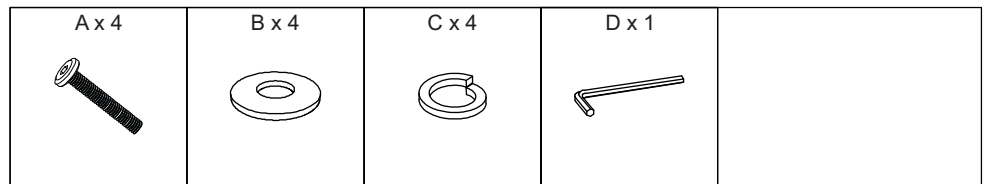
STEP 1



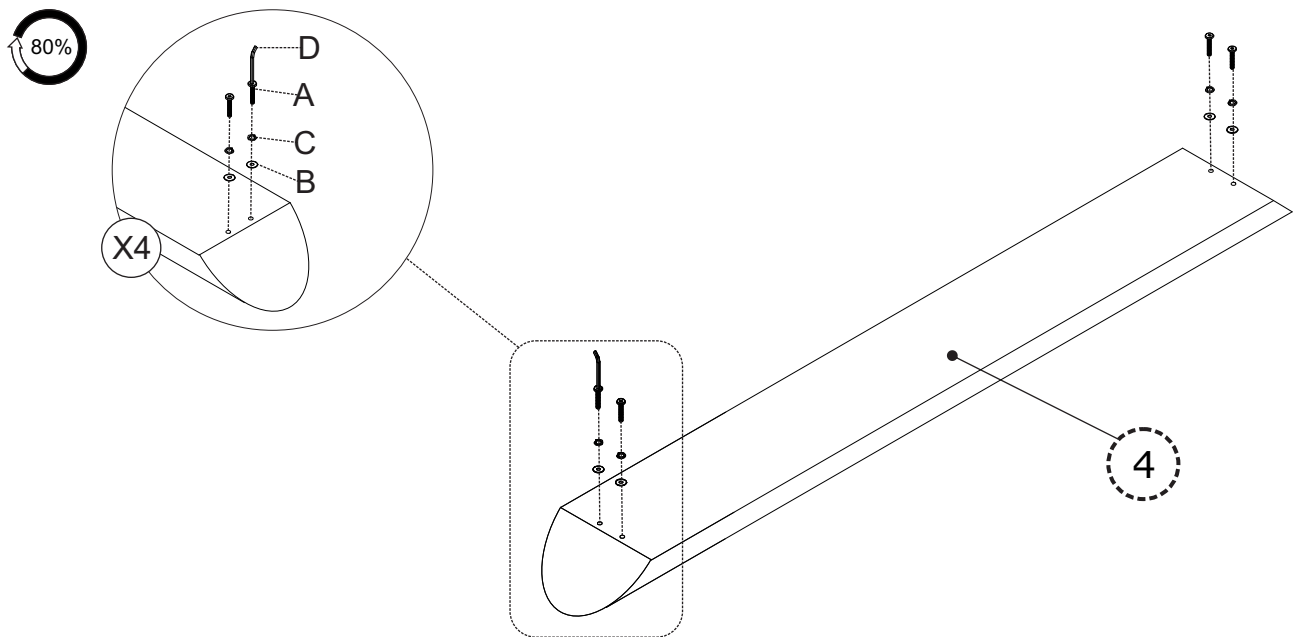
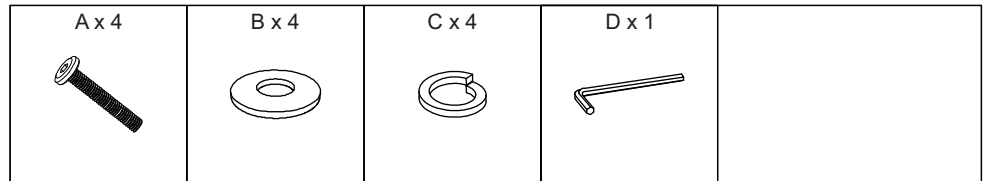
STEP 2



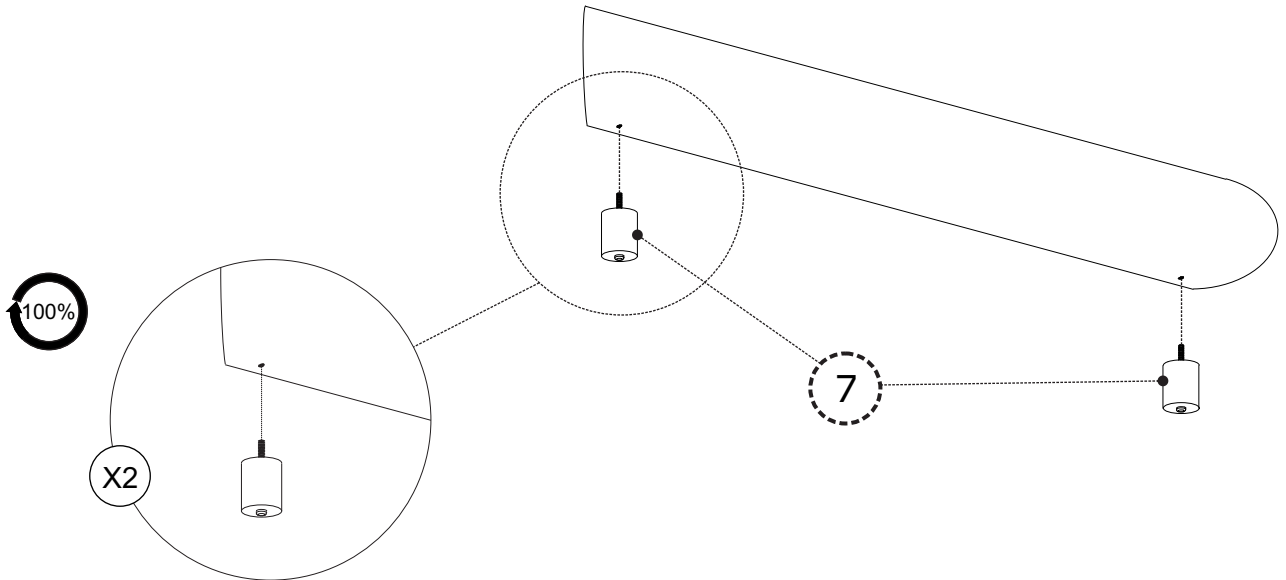
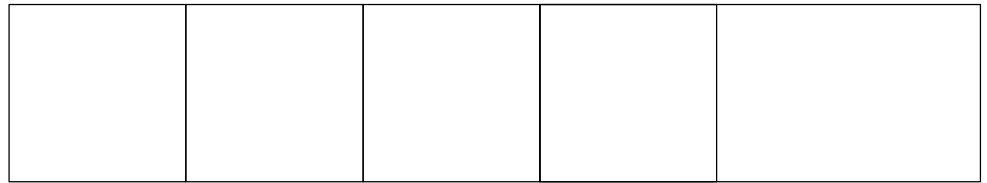
STEP 3



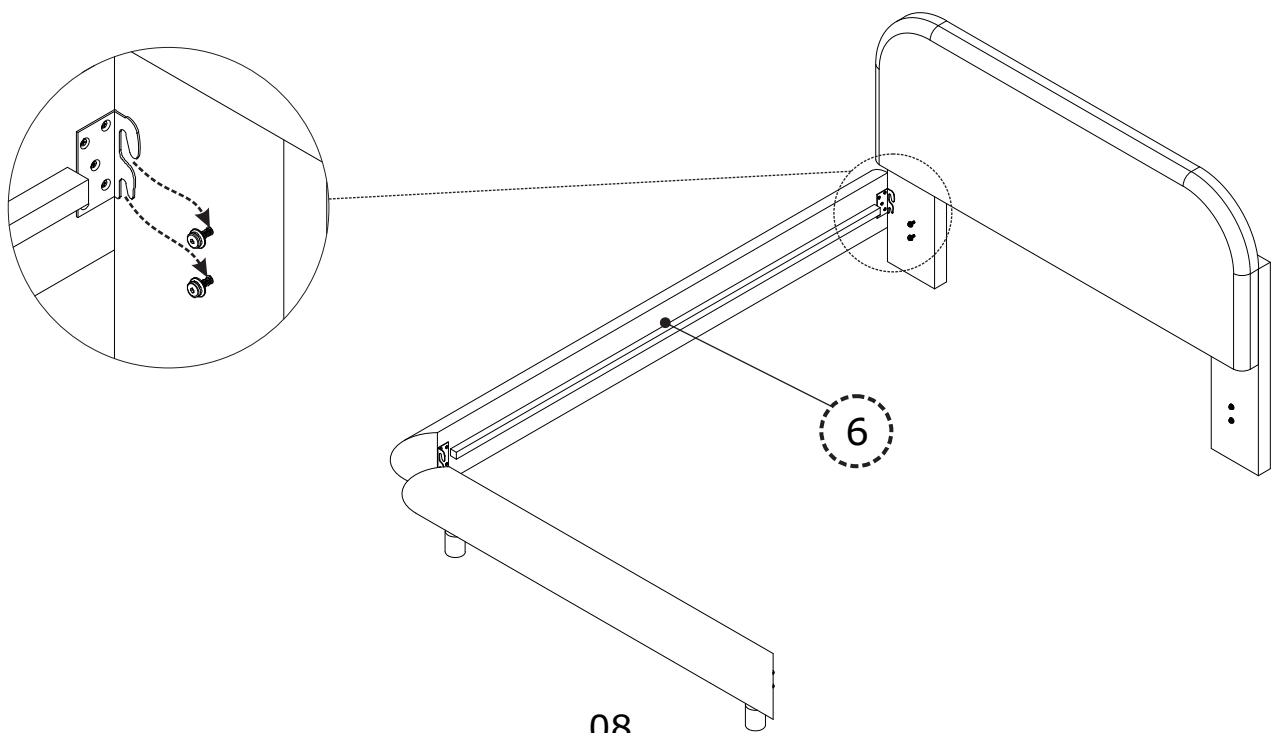
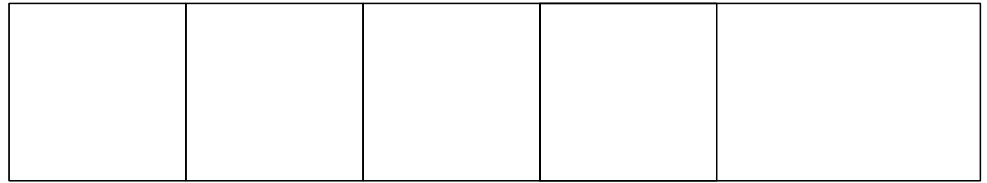
STEP 4



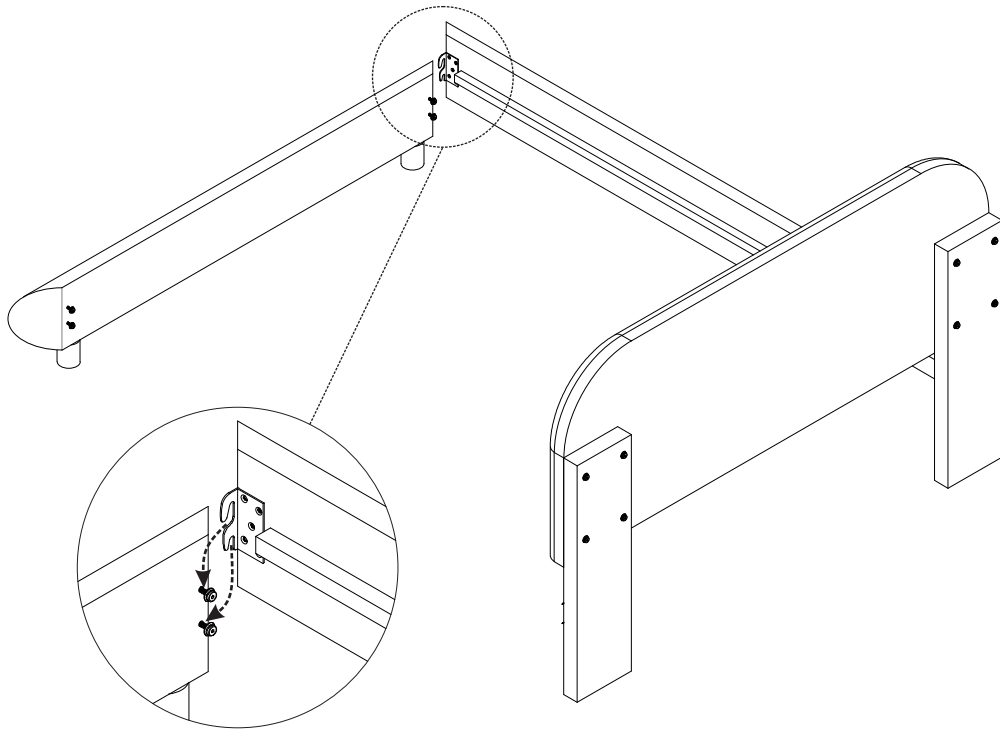
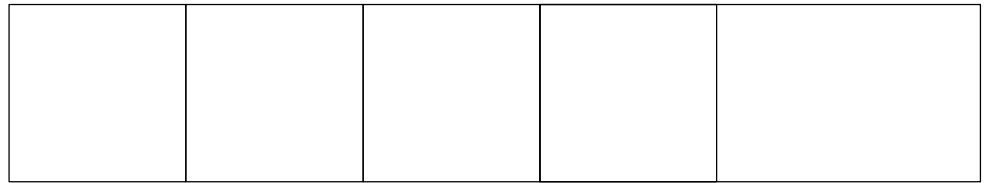
STEP 5



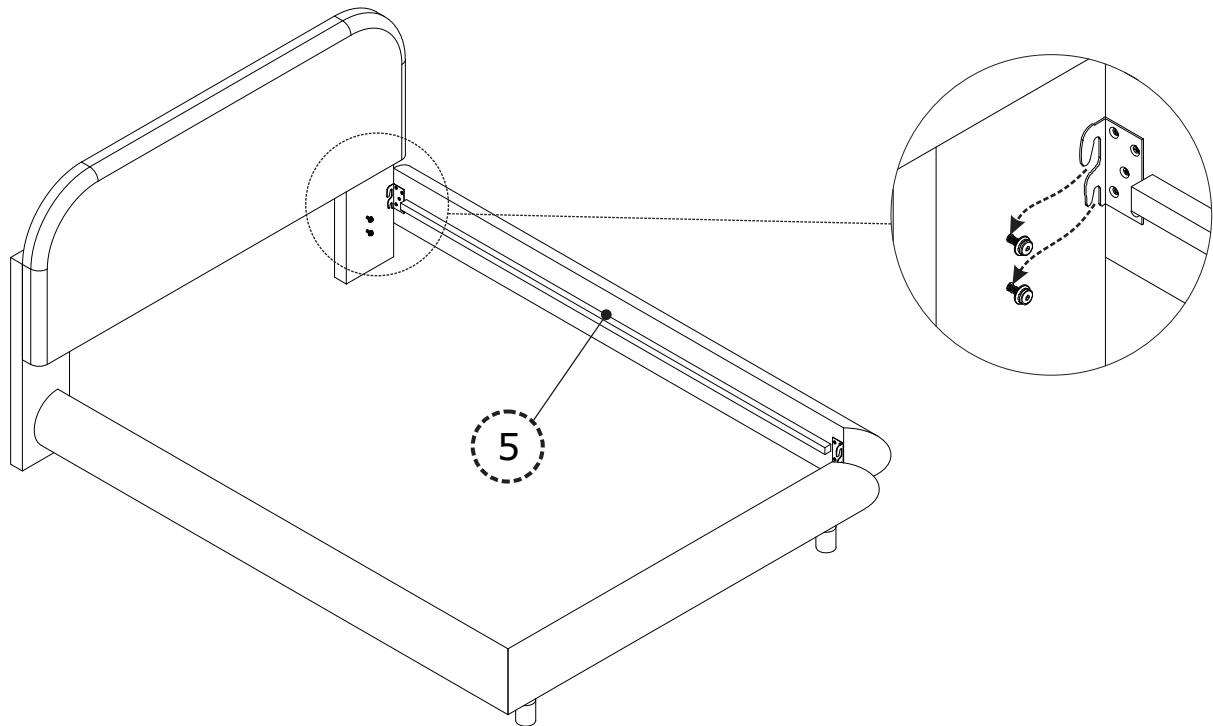
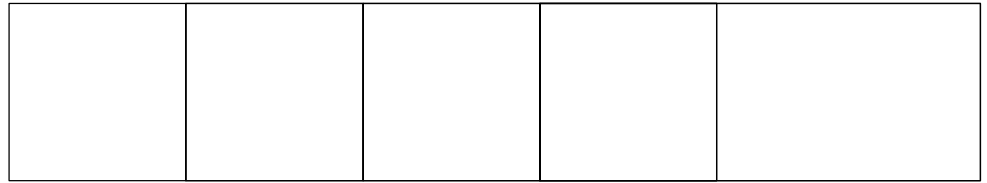
STEP 6



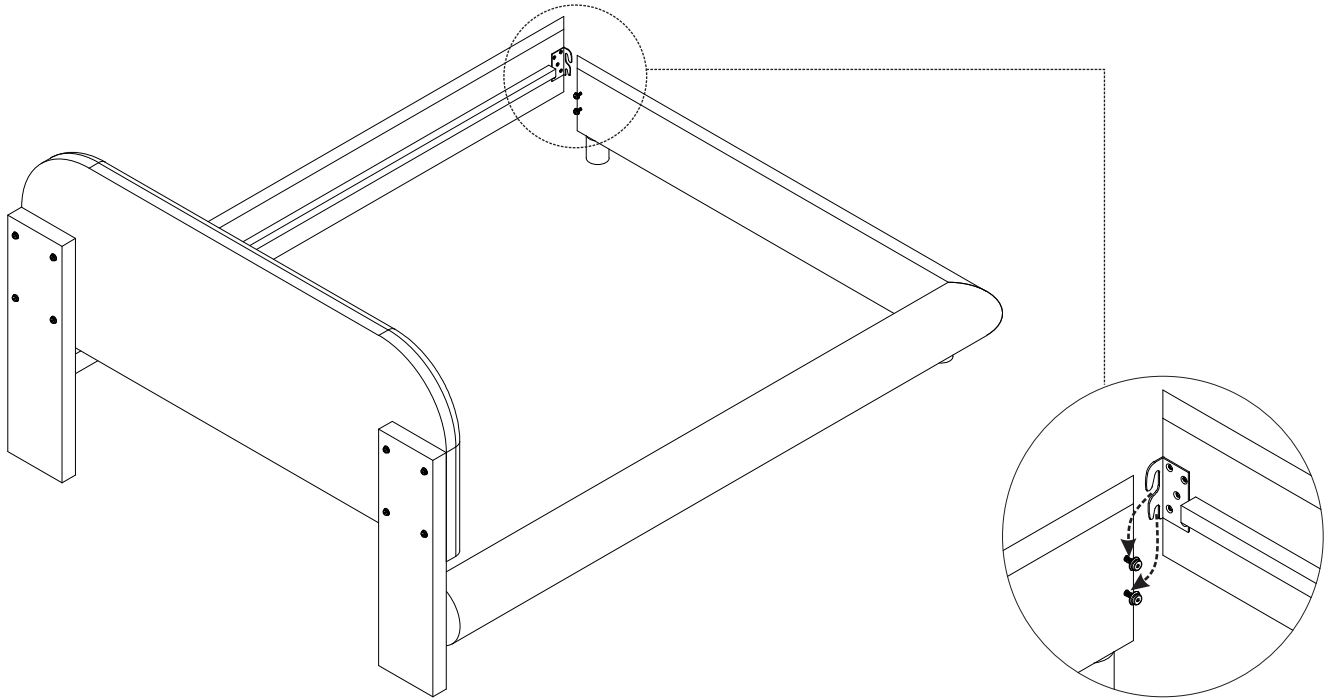
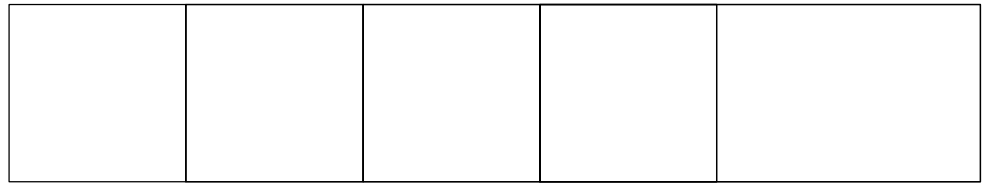
STEP 7



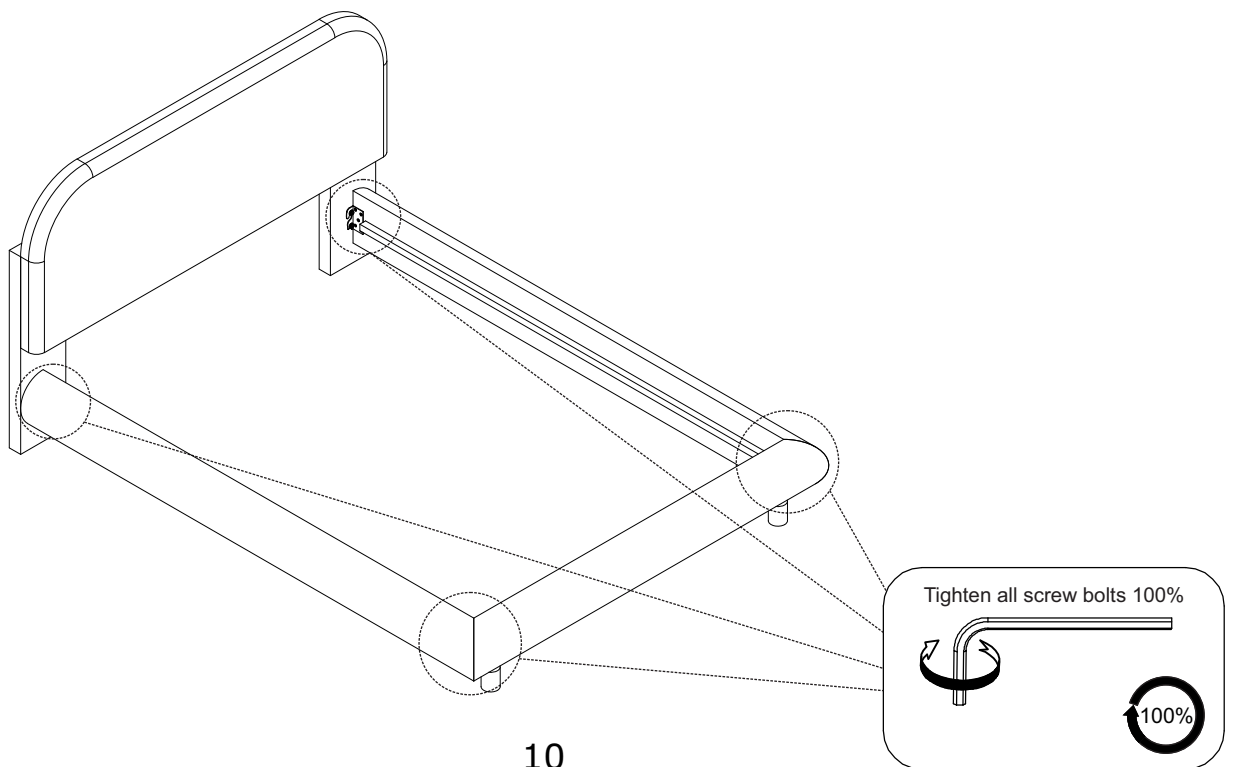
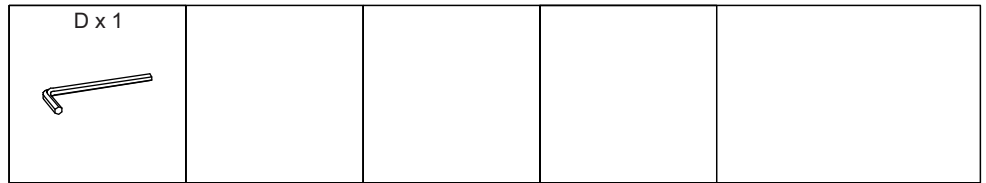
STEP 8



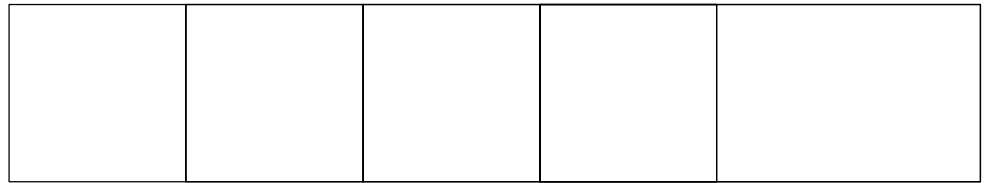
STEP 9



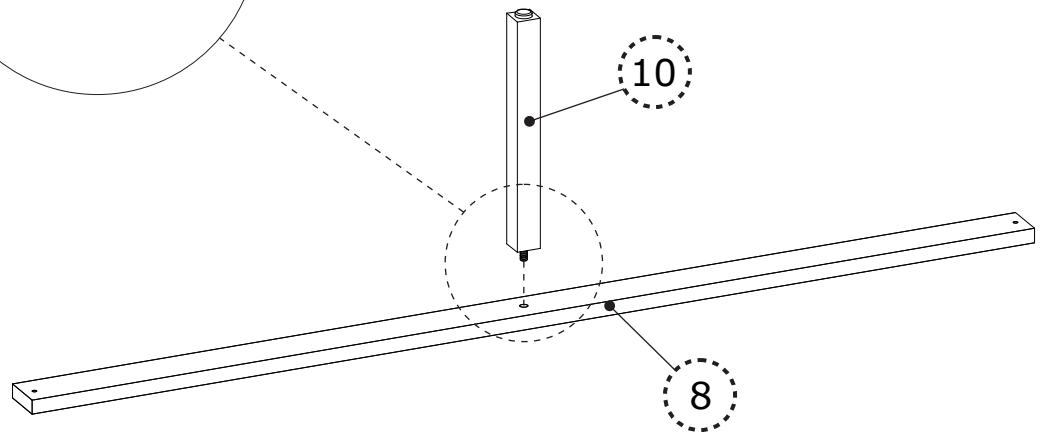
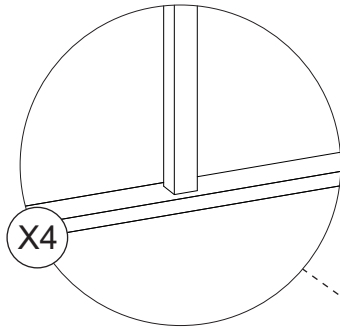
STEP 10



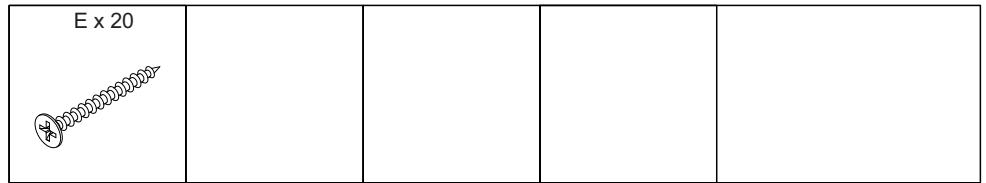
STEP 11



100%



STEP 12



100%

