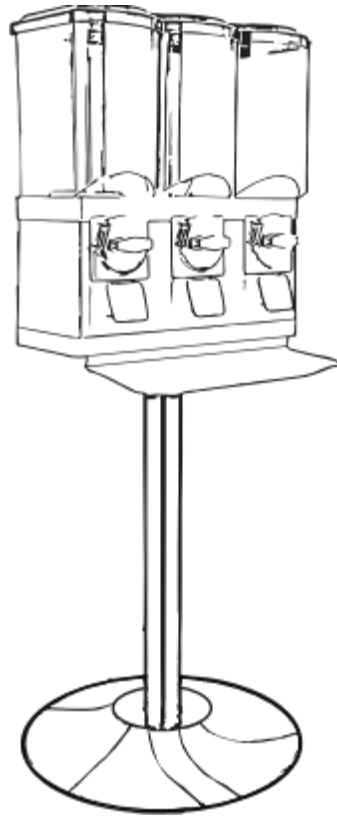


# TRIPLE VENDING MACHINE

## INSTRUCTION MANUAL



### CAUTION

Don't place this gumball vending machine under direct sunlight to avoid melting of candy products which in turn will affect its performance.

### NOTE

This Gumball vending machine has 2 canisters for vending bulk candy and 1 canister for vending gumball.

# VENDING MACHINE ASSEMBLY

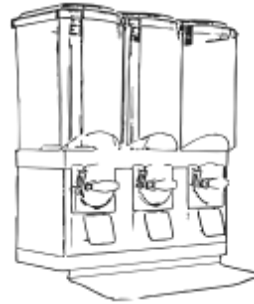
## PARTS



1  
Base



2  
Center pole

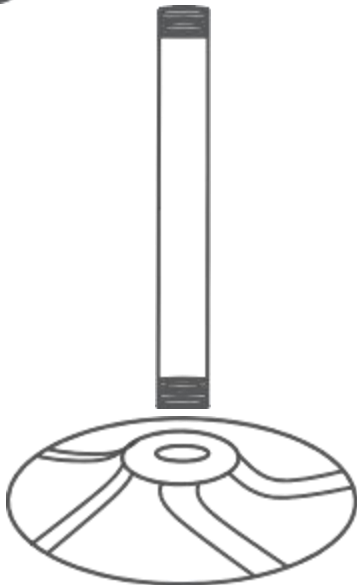


3  
Vending Machine



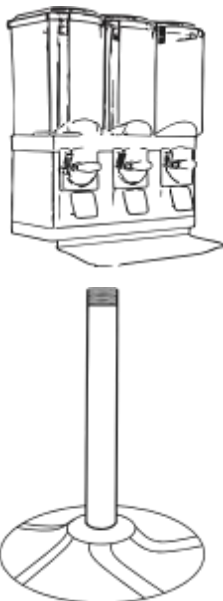
4  
Key (4 Pcs)

## STEP 1



Insert the center pole (2) into the base (1) and rotate it clockwise until it is securely tightened.

## STEP 2



Insert the center pole into the flange hole of vending machine(3) and then rotate the vending machine clockwise until it is securely tightened.

# HOW TO ADJUST THE CANDY WHEEL

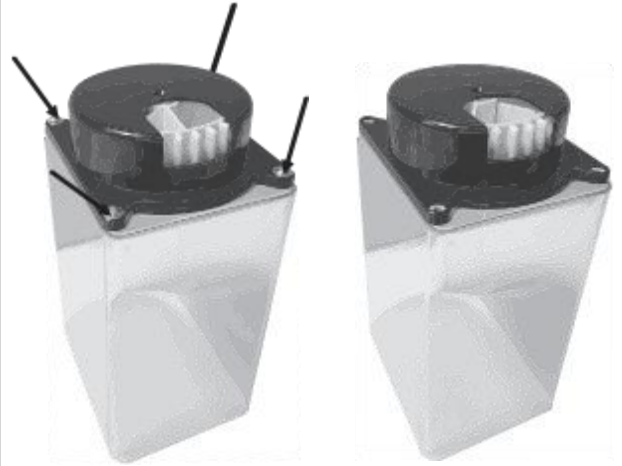
## STEP 1

Remove the lid of canisters using key, take out the canister and empty the canister. Invert the canister and place it on table.



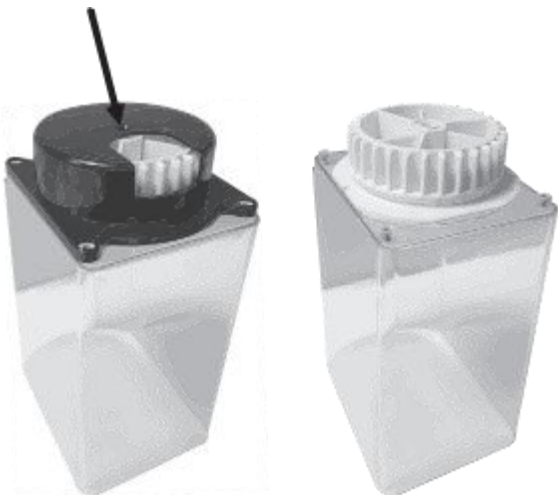
## STEP 2

Remove the four screws with screwdriver.



## STEP 3

Remove the housing from the canister.



## STEP 4

Remove the candy wheel and place it separately.



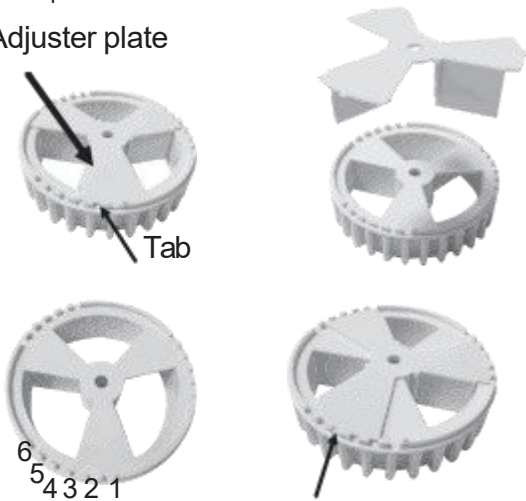
### STEP 5

Adjust the opening size of portion hole of candy wheel by lifting the adjuster plate and repositioning the tab to desired notch. Notch #1 is used for the largest vends, while notch #6 is used for the smallest vends. If you are vending large products, the adjuster plate can be removed entirely.

Here in this example, we adjusted to notch #4.

Example: Let's say the largest opening is selected, the machine dispenses 18 peanuts or candies, the smallest will dispense 9.

Adjuster plate



### STEP 6

Place the candy wheel on top of the brush plate as shown.

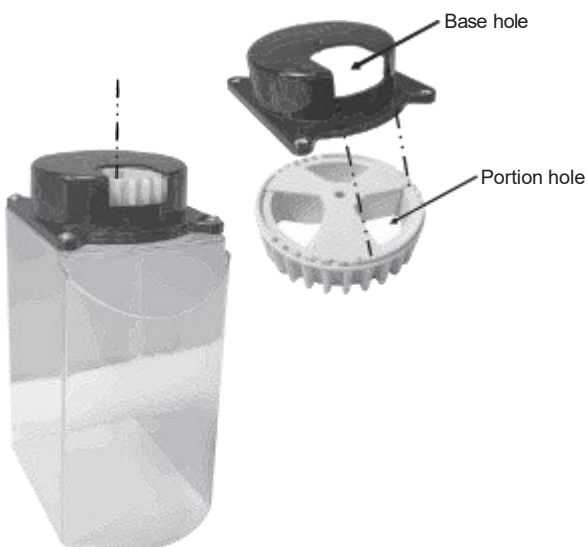
Note: Always ensure that brush plate must face towards the coin mechanism.



### STEP 7

Place the housing on top of the canister and ensure candy portion holes is aligned to base hole of the housing.

Important: portion hole of candy wheel must be aligned to base hole of the housing.



### STEP 8

Secure housing with four screws and place it back in the vending machine.

Note: Always ensure that base hose of housing must face towards the coin mechanism.



# HOW TO ADJUST THE GUMBALL WHEEL

## STEP 1

Remove the lid of canisters using key, take out the canister and empty the canister. Invert the canister and place it on table.

## STEP 2

Remove the four screws with screwdriver.



## STEP 3

Remove the housing from the canister.



## STEP 4

Remove riser and keep it separately.



## STEP 5

Remove the gumball wheel as shown.



### STEP 6

To adjust the wheel according to size of the gumball:  
I. Loosen the screw using a screwdriver.  
II. Turn the adjustment wheel to required opening size.  
III. Tighten the adjustment screw at desired level.  
Here in example, it is adjusted to centre.



### STEP 7

Place the gumball wheel on the gumball brush plate as shown and ensure springs of brush plate are toward the coin mechanism.



### STEP 8

Place the riser on top of the gumball wheel as shown and ensure that opening of riser is aligned to one of the gumball wheel holes.

Important: opening of riser must align with gumball wheel hole.



### STEP 9

Place the housing on the riser and ensure that tabs of riser are stuck to the edges of base hole of housing as shown.

Important: hole of gumball wheel must be aligned to the opening of riser and then to base hole of the housing.



### STEP 10

Secure housing with four screws and place it back in the vending machine.

Note: Always ensure that base hose of housing must face towards the coin mechanism.

# HOW TO USE WITH OUT QUARTER

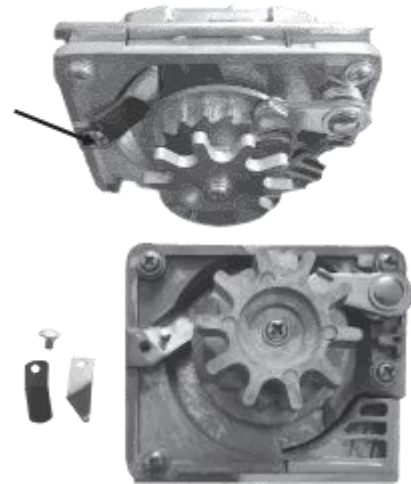
## STEP 1

Unscrew the locking screw of coin mechanism with screwdriver and take out coin mechanism.



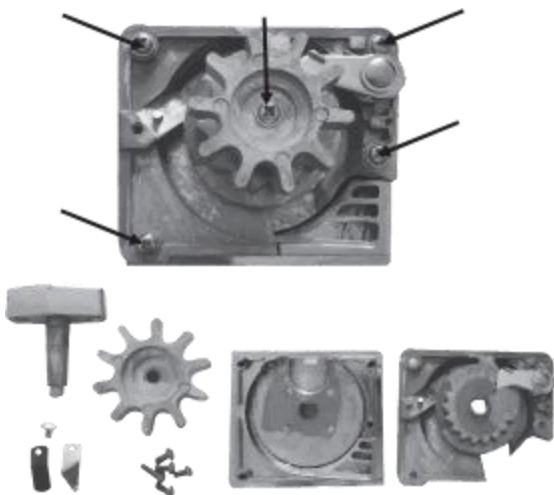
## STEP 2

Unscrew the screw and remove the surface coin detecting parts as shown.



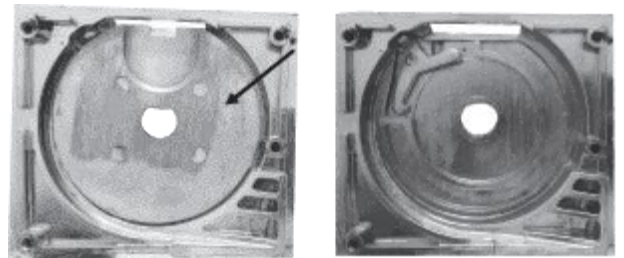
## STEP 3

Unscrew the screws and remove the parts as shown.



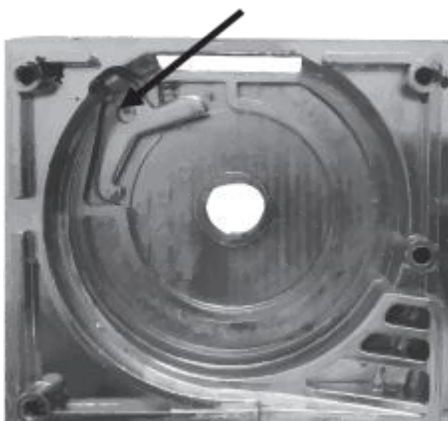
## STEP 4

Take faceplate with coin wheel and remove coin wheel from faceplate.



## STEP 5

Remove the bottom coin detector with spring from face plate.



## STEP 6

Reassemble everything as before, but leave out the surface and bottom coin detector parts.  
Assemble this coin mechanism back to machine with locking screw.

