

BENCH CHAIR

ASSEMBLY INSTRUCTIONS

Read this instruction carefully. See hardwre and Furniture part list for guidance.
Be sure all parts are complate, before you assemble. Pace all wooden prevent from being scratched.
Follow the figure to start assembling.

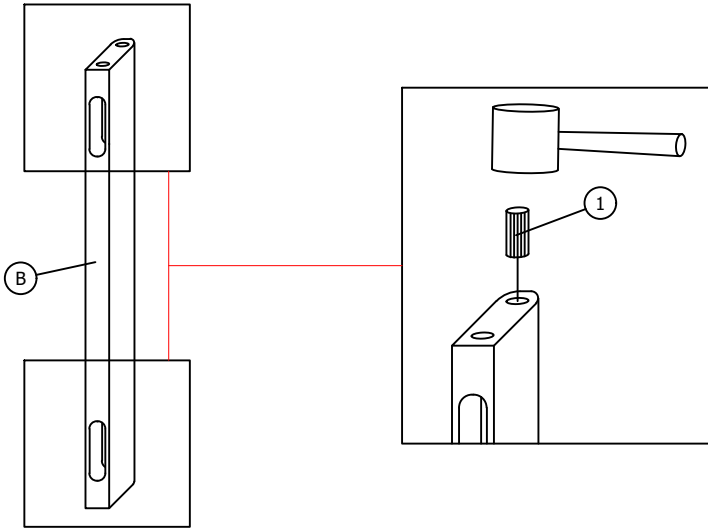
- CAUTIONS:**
- 1. Do not FULLY- TIGHTEN the nut or bolt until all nut and bolt is ready assembled.
 - 2. Do not OVER - TIGHTEN the nut or bolt avoid causing damages to the thread.
 - 3. Keep all hardware parts out of reach of children.

NOTE: THE LIST AND QUANTITY SHOWN ARE FOR 1 UNIT ASSEMBLY.

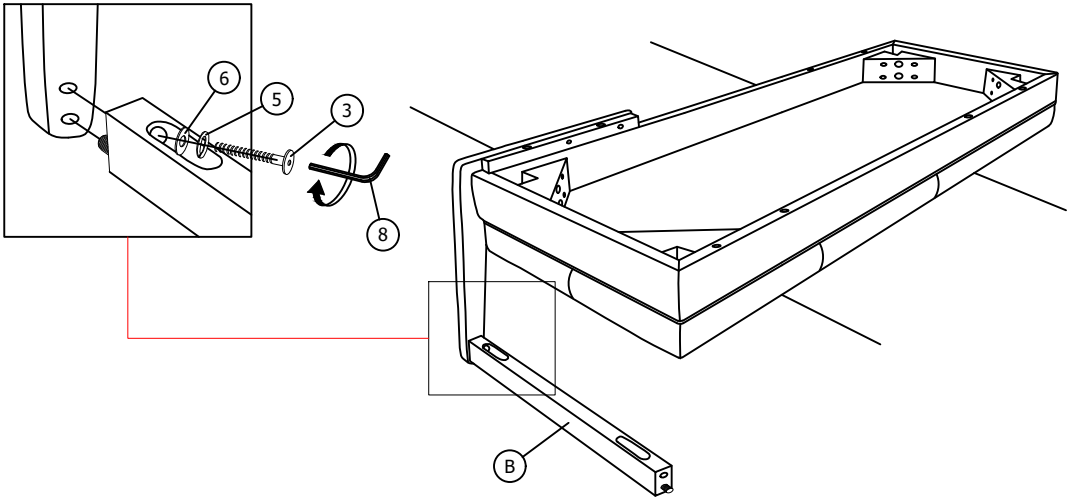
PART LIST		
ITEM	DESCRIPTION	QTY
A	ARM SIDE (L & R)	4 PCS
B	ARM UP	2 PCS
C	CUSHION SEAT	1 PC
D	LEG	4 PCS

HARDWARE LIST		
ITEM	DESCRIPTION	QTY
1	WOOD DOWEL M8 x 30mm	4 PCS
2	JCBC SCREW M6 x 30mm	8 PCS
3	JCBC SCREW M6 x 50mm	4 PCS
4	JCBC SCREW M6 x 60mm	8 PCS
5	SPRING WASHER M6	20 PCS
6	FLAT WASHER M6 x 13mm	12 PCS
7	FLAT WASHER M6 x 19mm	8 PCS
8	ALLEN KEY M4	1 PC

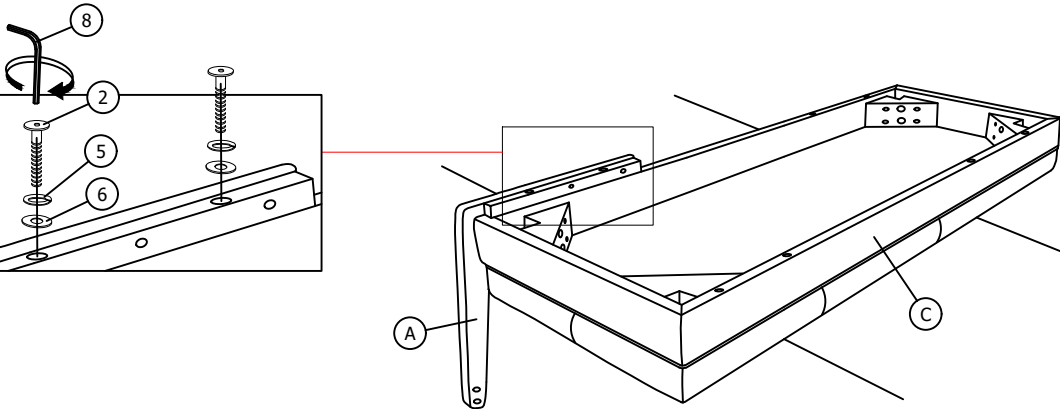
STEP 01



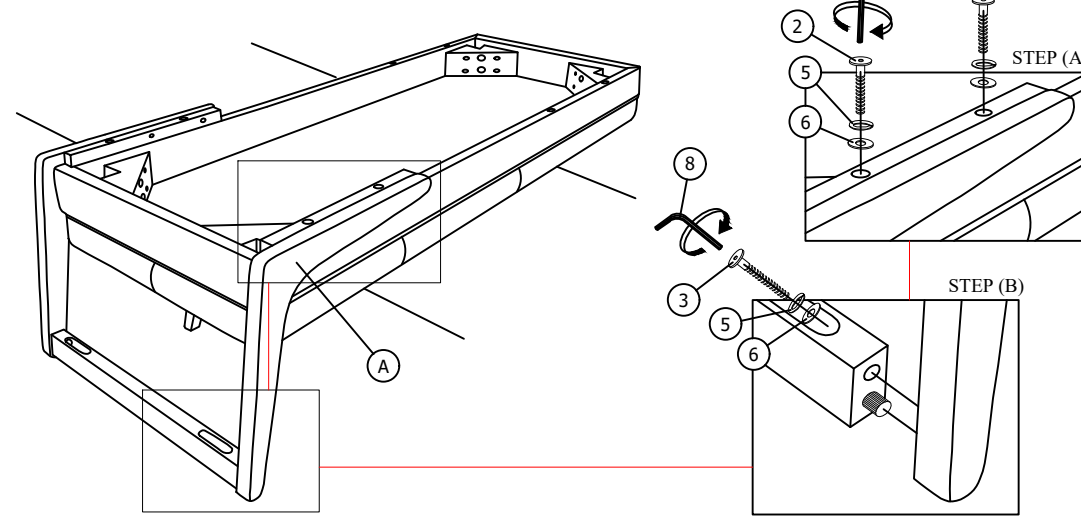
STEP 03



STEP 02



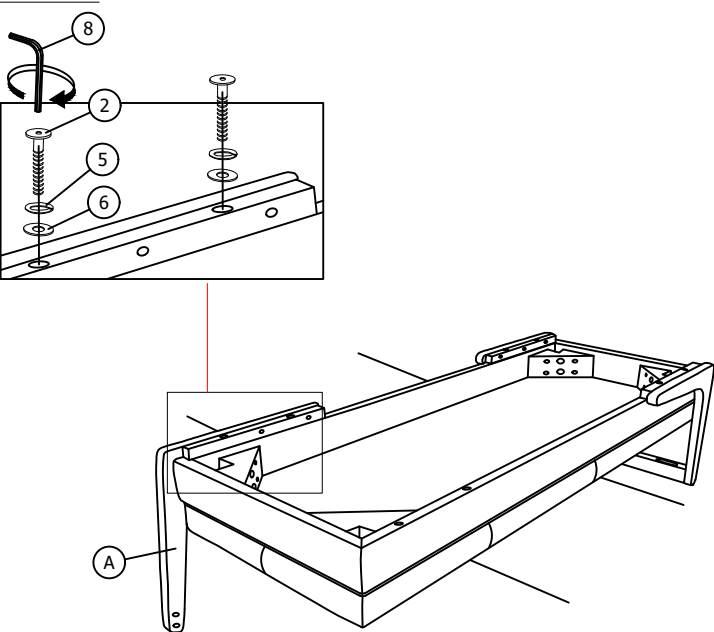
STEP 04



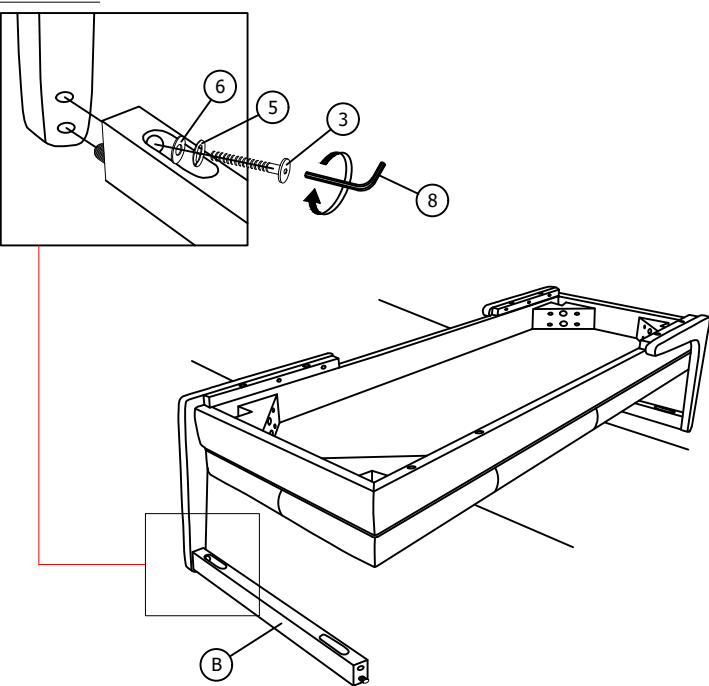
BENCH CHAIR

ASSEMBLY INSTRUCTIONS

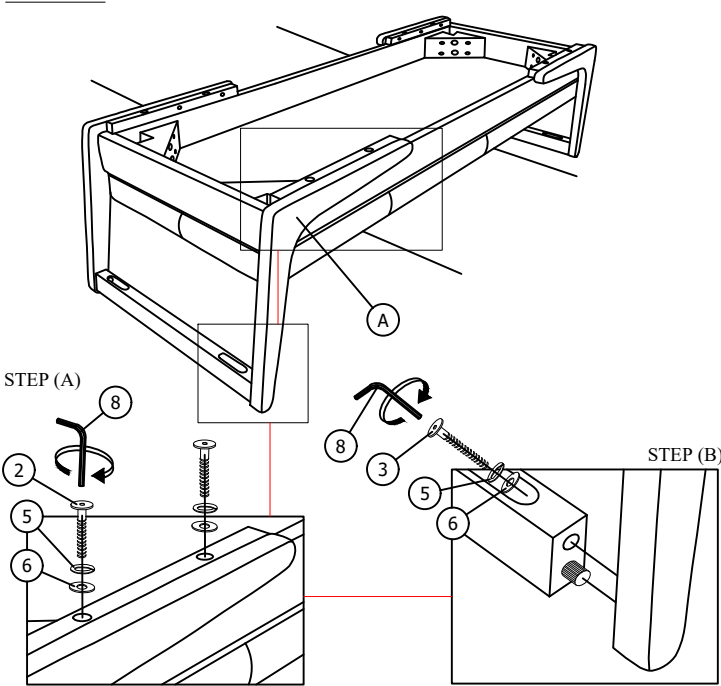
STEP 05



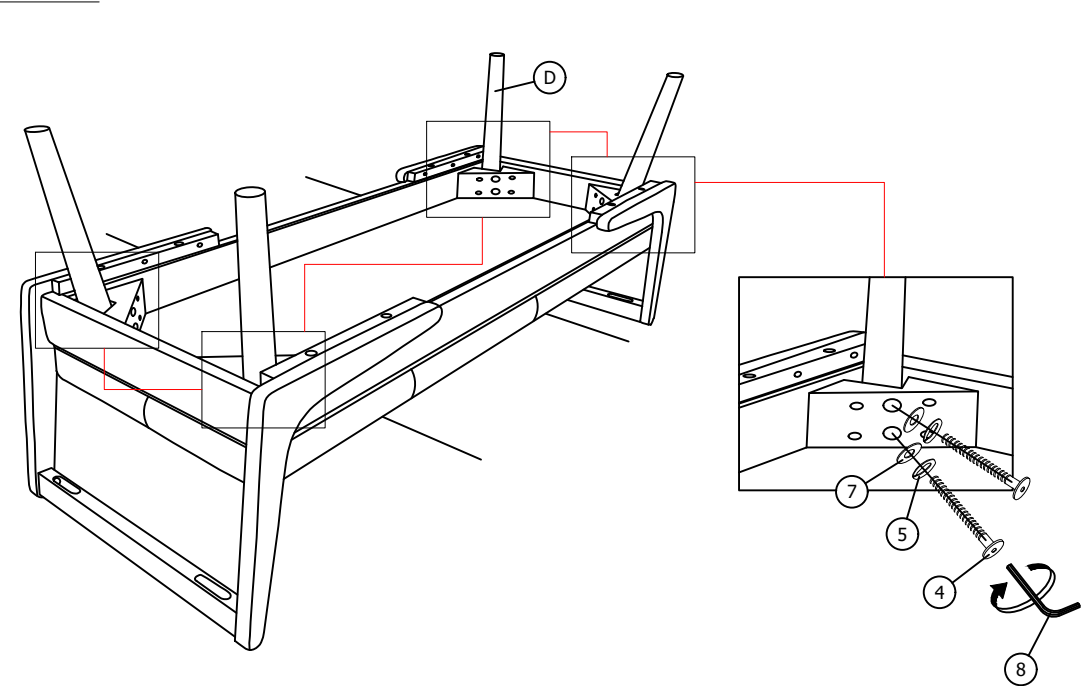
STEP 06



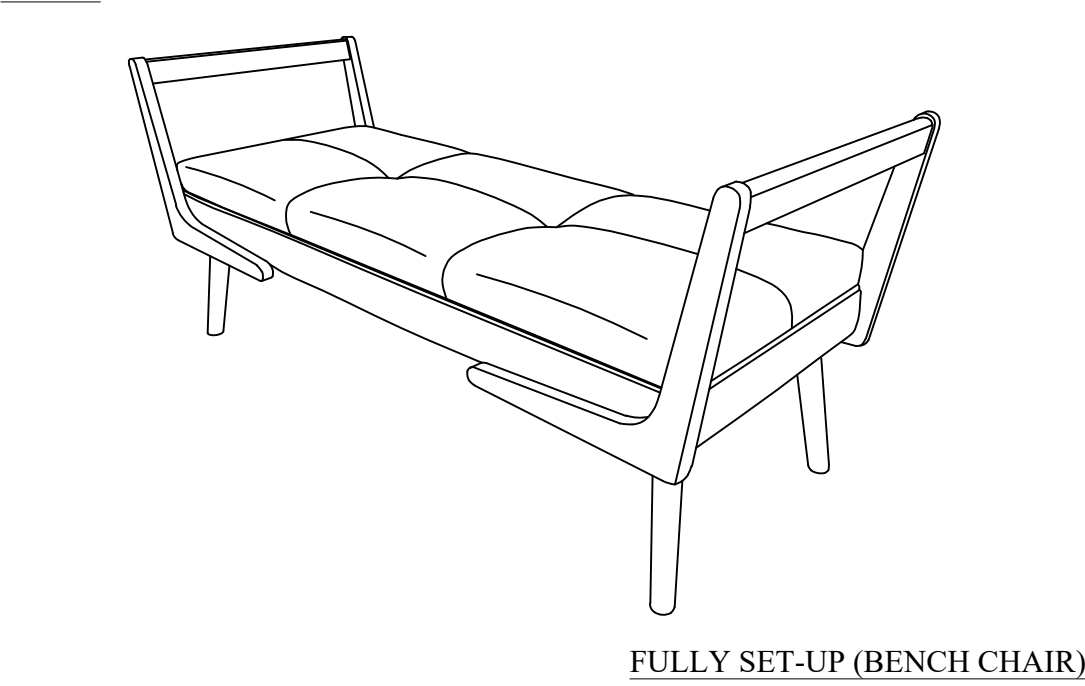
STEP 07



STEP 08



STEP 09



FULLY SET-UP (BENCH CHAIR)