

# INSTALLATION INSTRUCTIONS CARE AND MAINTENANCE

## ONE-PIECE DUAL FLUSH TOILET

1.60Gpf(6.0Lpf)/1.10Gpf(4.0Lpf)

To ensure this product is installed properly, please read these instructions carefully before you begin.  
(Certain installations may require professional help.) Also be sure your installation conforms to local codes.

**▲ CAUTION: HANDLE WITH CARE. VITREOUS CHINAWARE FRAGILE WITH SHARP EDGES IF BROKEN.**  
**NOTE:** Pictures may not exactly define contour of china and components.

### RECOMMENDED TOOLS AND MATERIALS

Putty Knife	Flathead Screwdriver	Adjustable Wrench	Sealant	Tape Measure
Hacksaw	Flexible Supply Hose	Water Supply Kit	Carpenters Level	

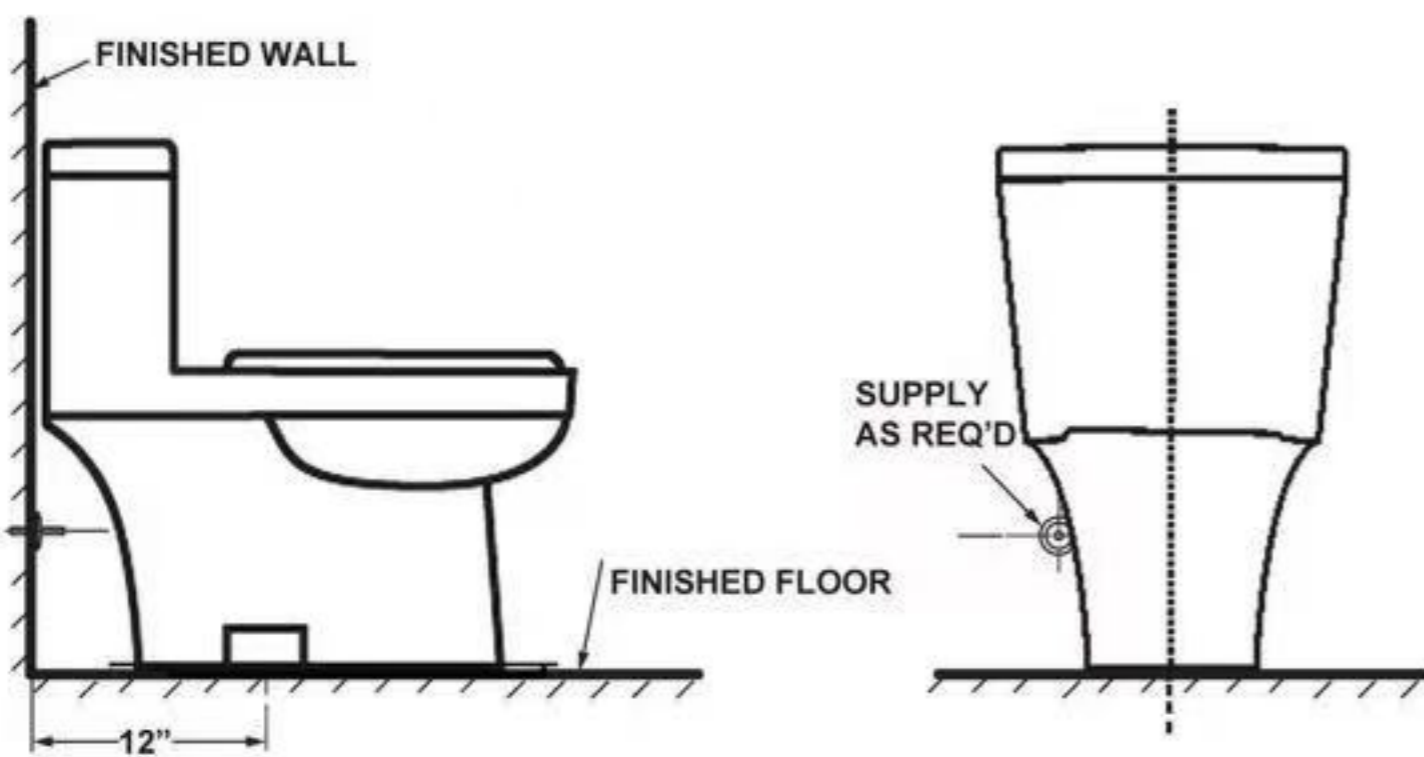
#### 1 REMOVE OLD TOILET

- Turn off water supply valve and flush tank completely. Towel or sponge remaining water from tank and bowl.
- Disconnect and remove old water supply line. NOTE: If replacing valve, first shut off main water supply!
- Remove old mounting hardware, remove toilet and plug floor flange to block sewer gases from escaping.
- Remove closet bolts from flange and clean away old wax, putty, etc. from base area.

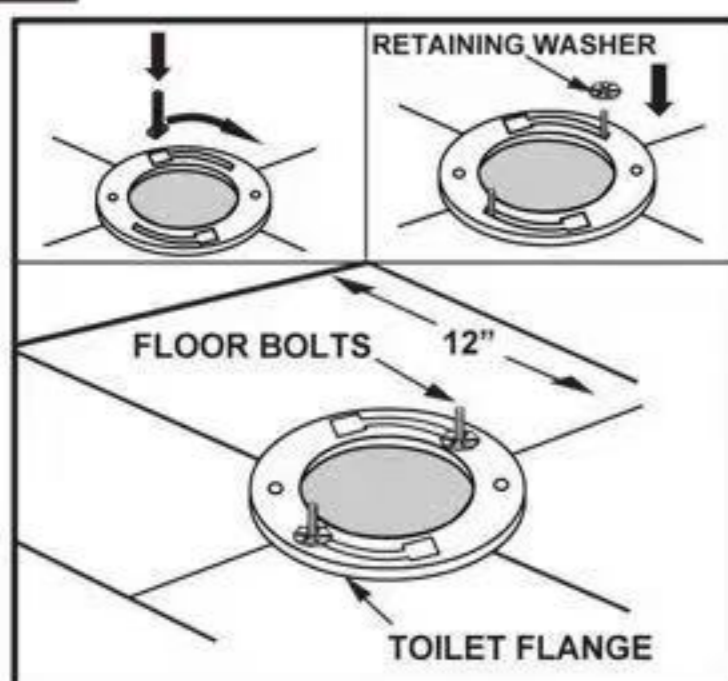
**NOTE: MOUNTING SURFACE MUST BE CLEAN AND LEVEL BEFORE NEW TOILET IS INSTALLED.**

#### 2 ROUGHING-IN DIMENSIONS:

**NOTE:** Distance from wall to closet flange centerline must be as listed on chart:



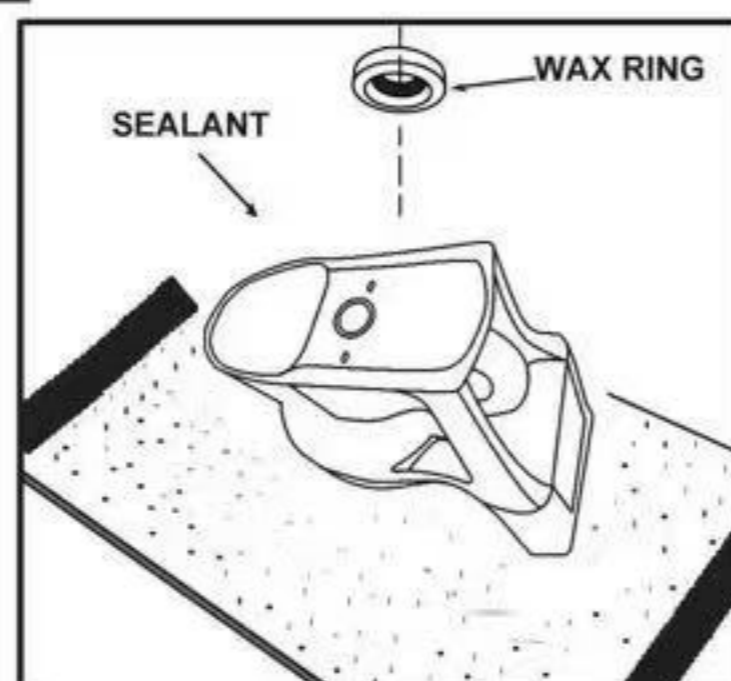
#### 3



##### INSTALL CLOSET BOLTS

Insert floor bolts into flange channel with bolt head down (use plastic retaining washers to hold the bolts in full-length. Floor bolts should be parallel to wall and 6"(152mm) apart.

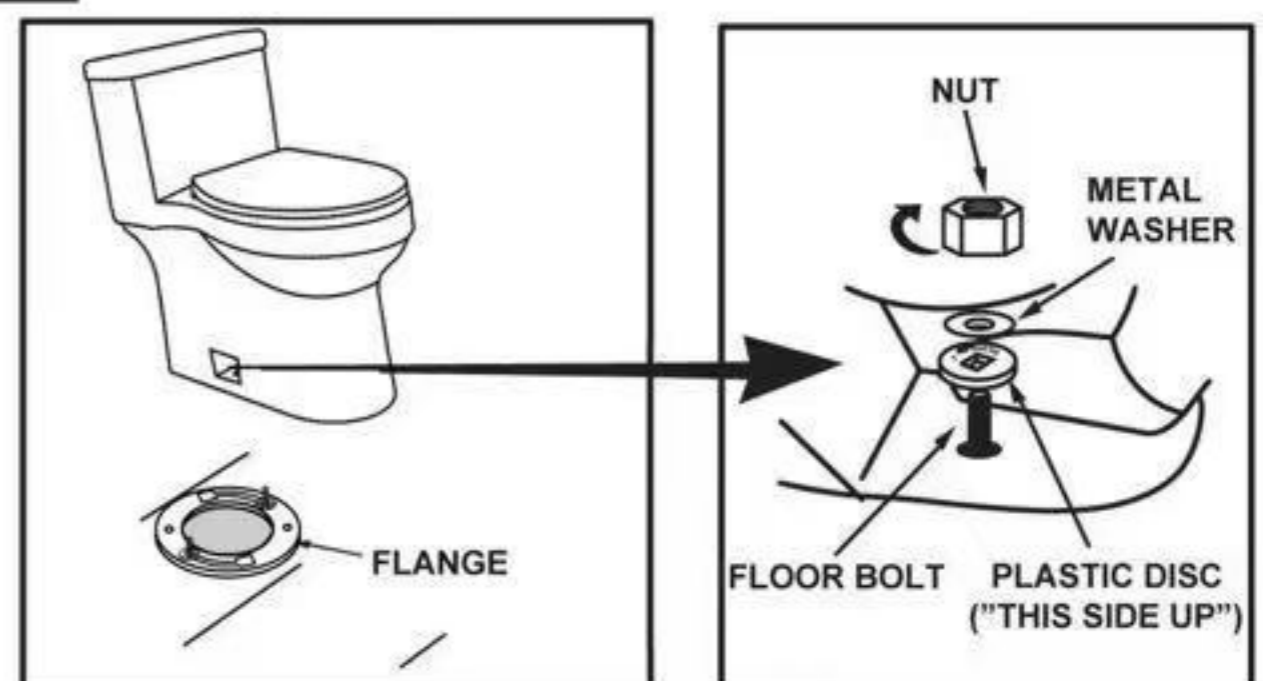
#### 4



##### INSTALL WAX RING

Turn toilet bowl down onto a towel or cushioned surface. Place the wax ring around the draining outlet of the bowl and press firmly enough. Apply a thin bead of sealant around toilet base.

#### 5



##### POSITION TOILET BOWL ON FLANGE

- Unplug floor waste opening, gently place the bowl in position with the floor bolts protruding up through the hole in the base.
- Press down with slight twisting motion on the top center of bowl to compress the wax ring creating a water-tight seal.
- Place plastic disc, metal washers and nuts on floor bolts.

SAVE FOR FUTURE USE