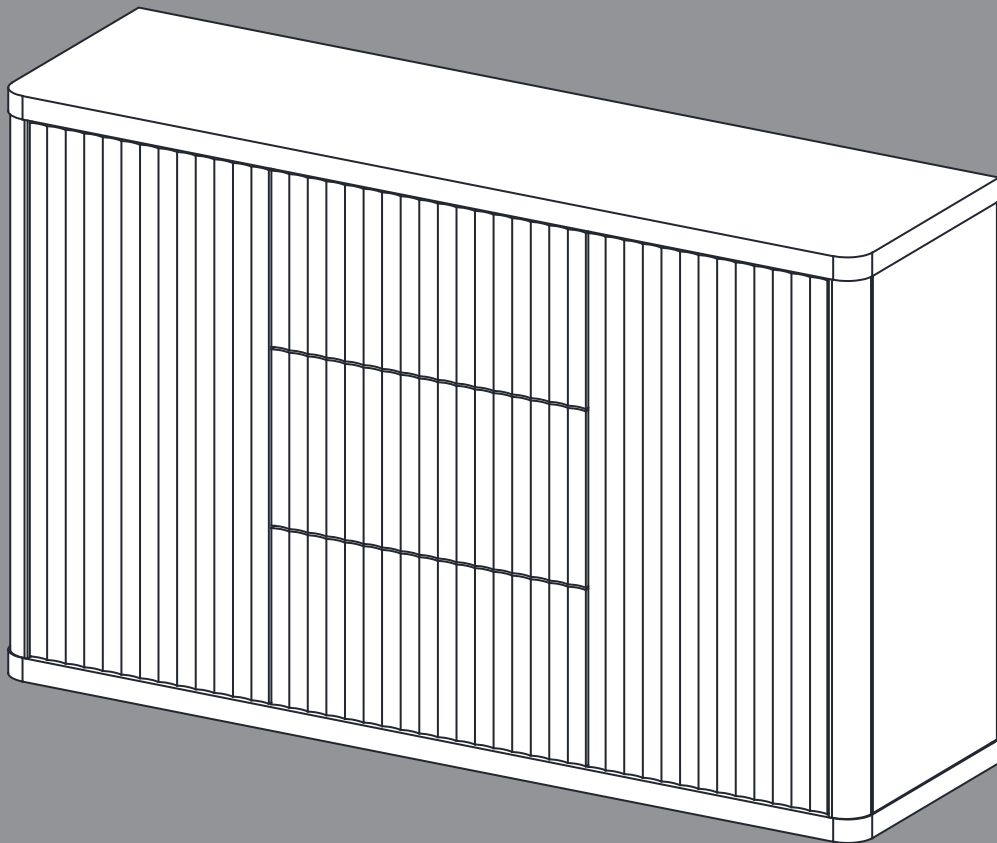


SICOTAS

SC128A1CGYY1325 | SC128A1CBKY1326 | SC128A1XLTY1342



Cas Collection

Assembly Instructions

Before beginning the assembly process, please read and save these instructions for reference. Following these guidelines will ensure a smooth and successful assembly of your product.

1. Part Identification:

Carefully separate and identify all the parts included in your package. Confirm that you have all the components listed in the instruction manual. This step will help you avoid any missing or misplaced parts during assembly.

2. Work Surface:

To prevent any scratches or damage to the product, assemble it on a soft mat or a similar protective surface. This will provide a cushioned area for the components and protect the surfaces from unwanted marks.

3. Step-by-Step Assembly:

Follow the assembly instructions provided, proceeding one step at a time. Take care to understand each step properly before proceeding to the next one. This sequential approach ensures that the assembly is done correctly and minimizes the chance of errors.

4. Proper Screw Seating:

When attaching screws and nuts, it is essential not to fully tighten them until all screws are correctly seated. By partially tightening each screw and nut initially, you can ensure that they are aligned properly and fit securely before final tightening.

5. Avoid Over-Tightening:

While each screw and nut should be tightened correctly, it is crucial not to over-tighten them. Over-tightening can cause damage to the product or compromise its structural integrity. Use the appropriate amount of force to secure the components without excessive tightening.

SICOTAS customer help center:

If you encounter any questions or problems during the assembly process, please do not hesitate to contact us.

We strive to provide excellent customer support and will respond to your inquiries within 24 hours. Our team will offer you a suitable solution to address any concerns you may have.



Email:
service@sicotas.com



Website:
www.sicotas.com



Phone:
(833) 742-6827



Official Website:



WhatsApp:



YouTube:



Instagram:

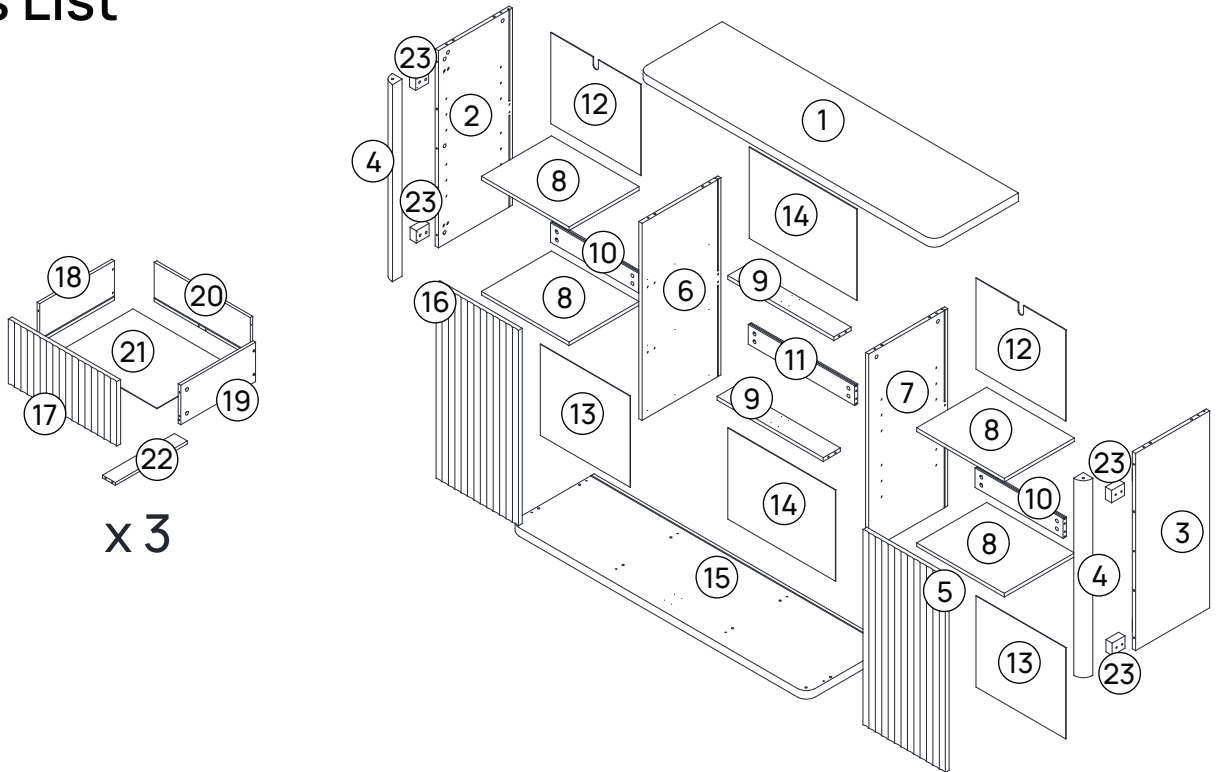


Facebook:

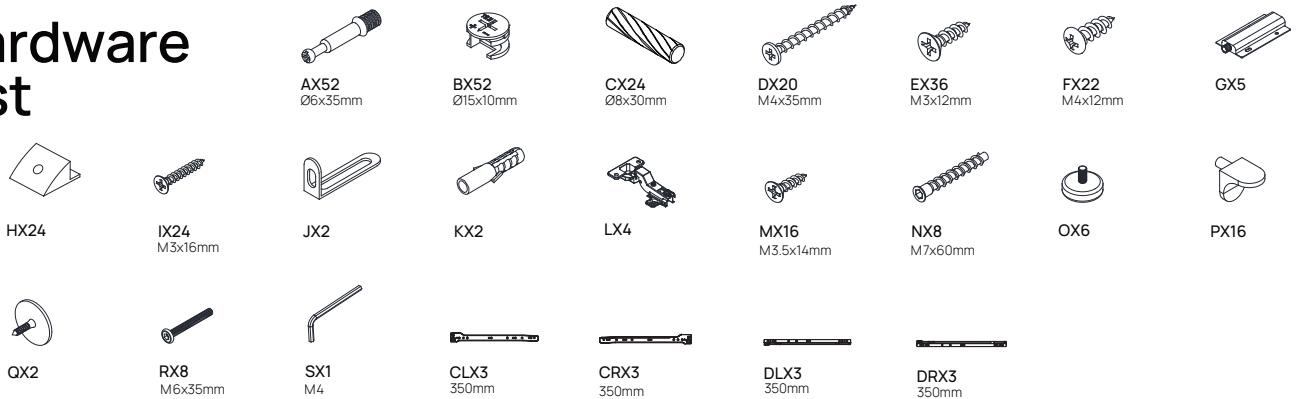


TikTok:

Parts List

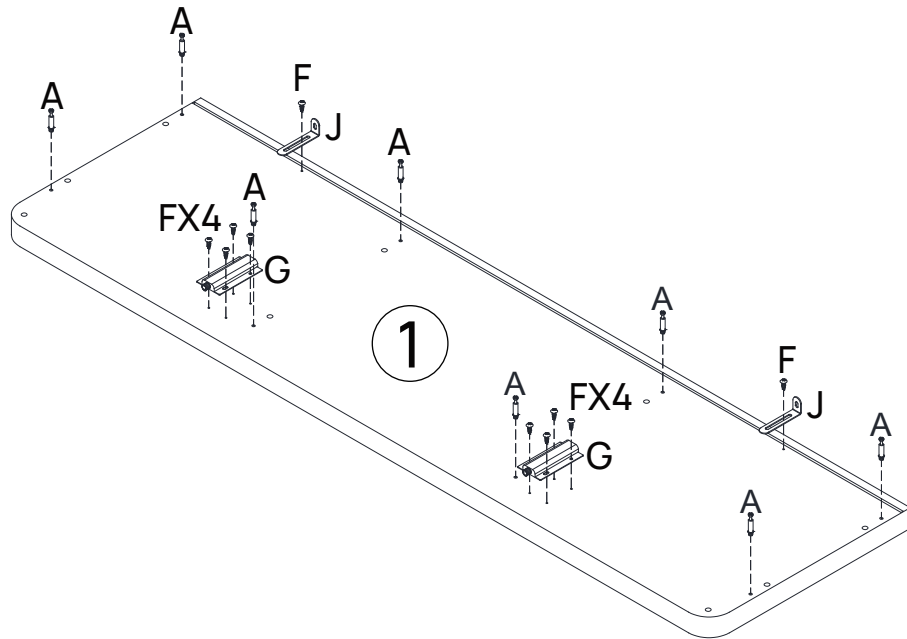


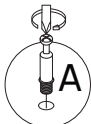
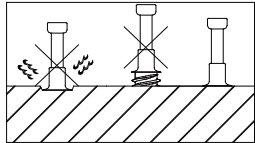

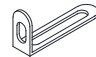


Hardware List



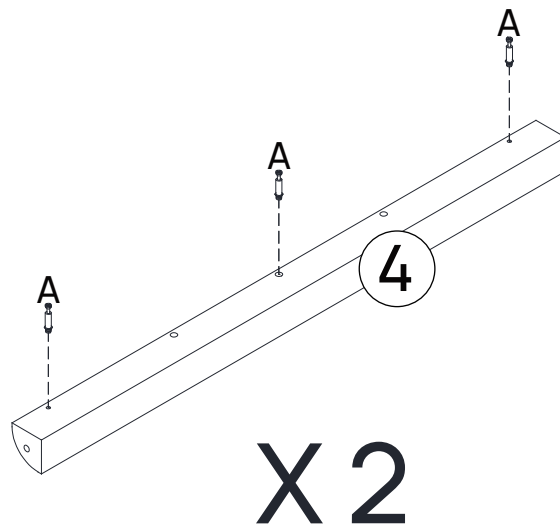
Code	Description	Quantity	Code	Description	Quantity
A	Ø6*35mm Cam bolt	52+2	N	M7x60mm Bolt	8+2
B	Ø15x10mm Cam lock	52+2	O	Adjusting the footrest	6+1
C	Ø8x30mm Wood dowel	24+2	P	Metal pin	16+2
D	M4x35mm Screw	20+2	Q	Rebound gasket	2
E	M3x12mm Screw	36+2	R	M6x35mm Bolt	8+2
F	M4x12mm Screw	22+2	S	Wrench	1
G	Rebound device	5	CL	350mm Drawer runner set	3
H	Back clip	24+2	CR	350mm Drawer runner set	3
I	M3x16mm Screw	24+2	DL	350mm Drawer runner set	3
J	Anti falling iron sheet	2	DR	350mm Drawer runner set	3
K	Plastic anchor	2			
L	Hinge	4			
M	M3.5x14mm Screw	16+2			


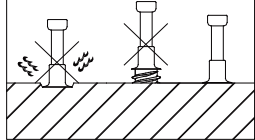

Step 1



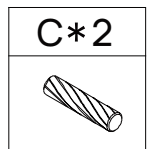
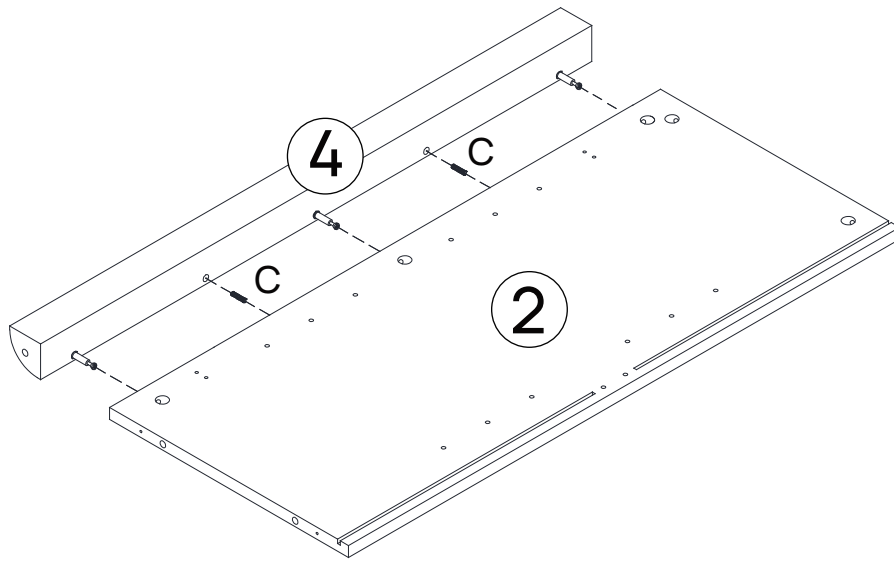
		G * 2	J * 2	F * 10	A * 8
					

Step 2

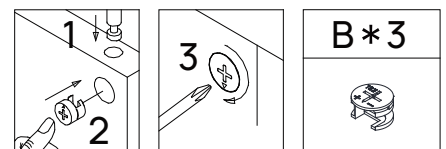
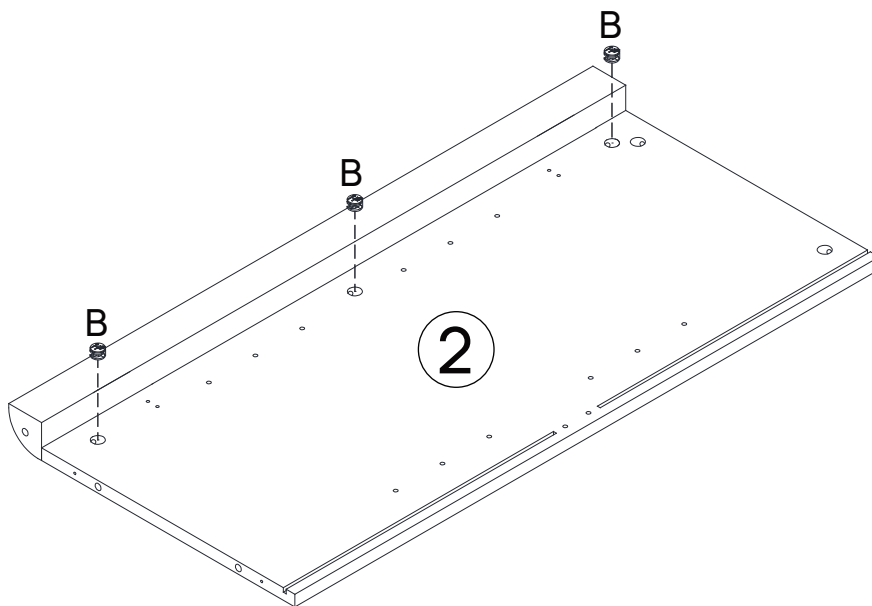


		A * 6
		

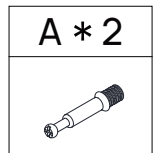
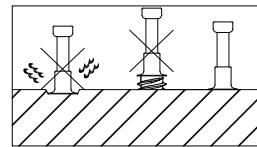
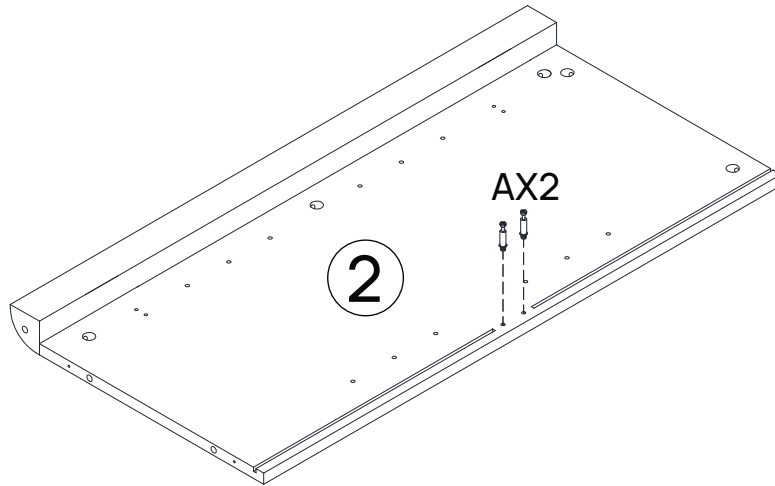
Step 3



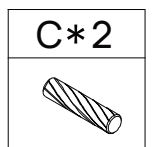
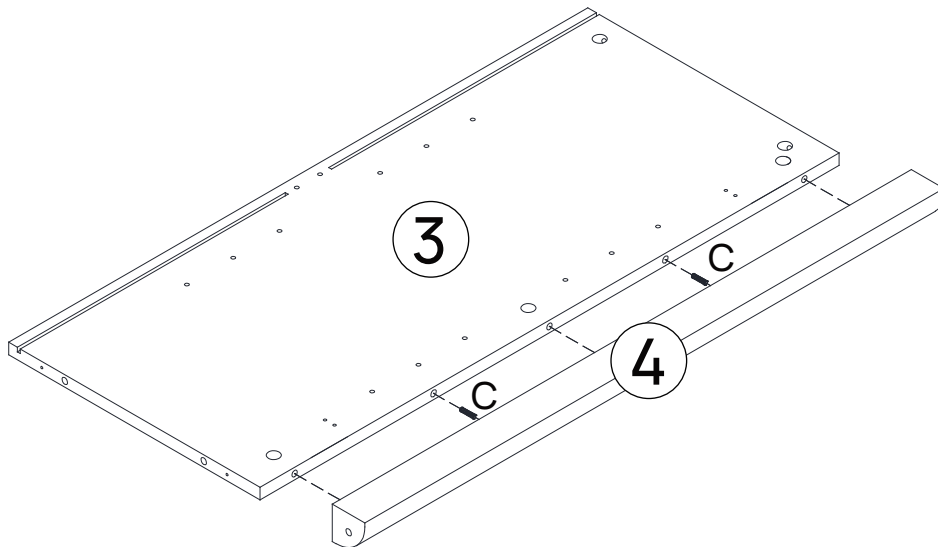
Step 4



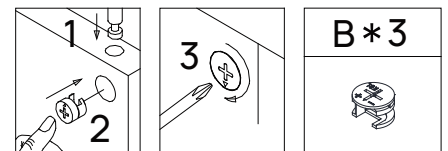
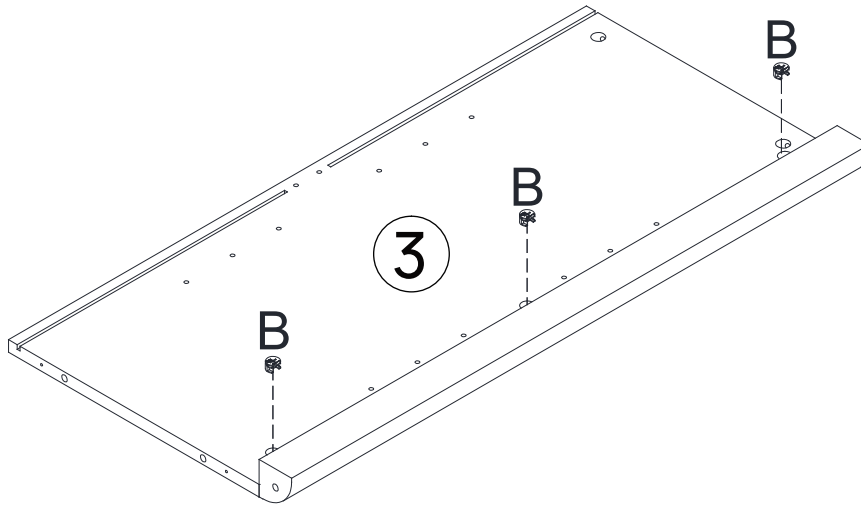
Step 5



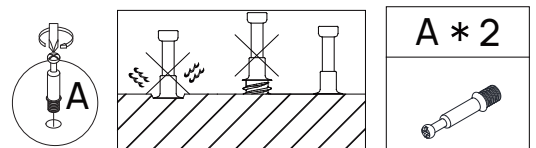
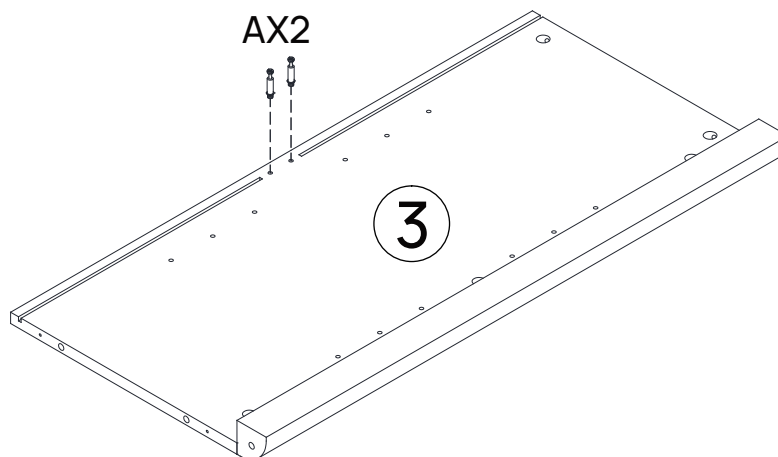
Step 6



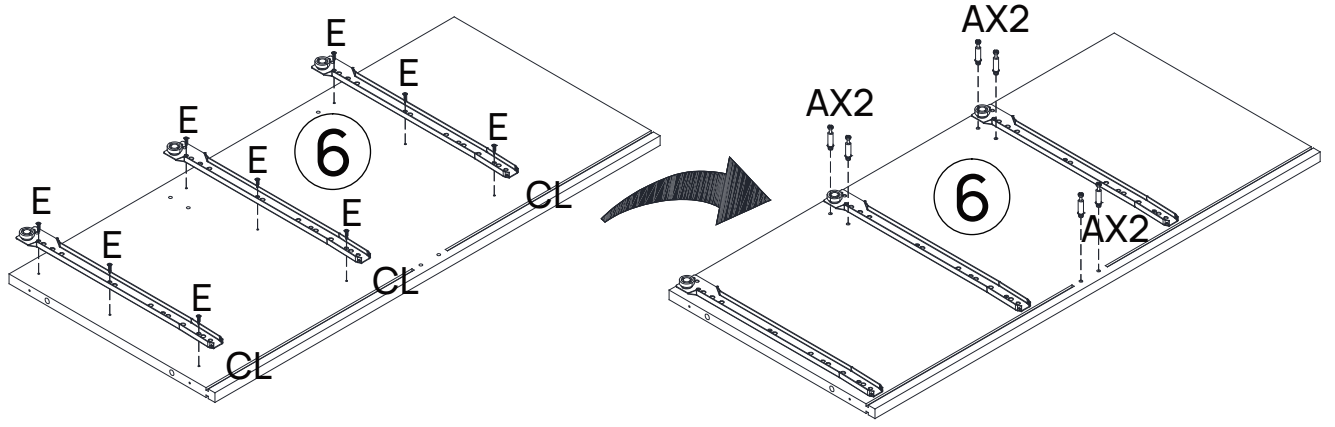
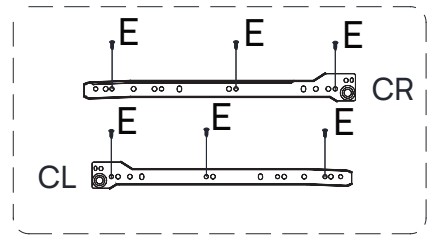
Step 7




Step 8

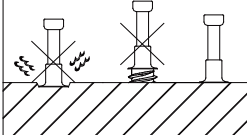


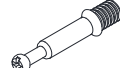


Step 9



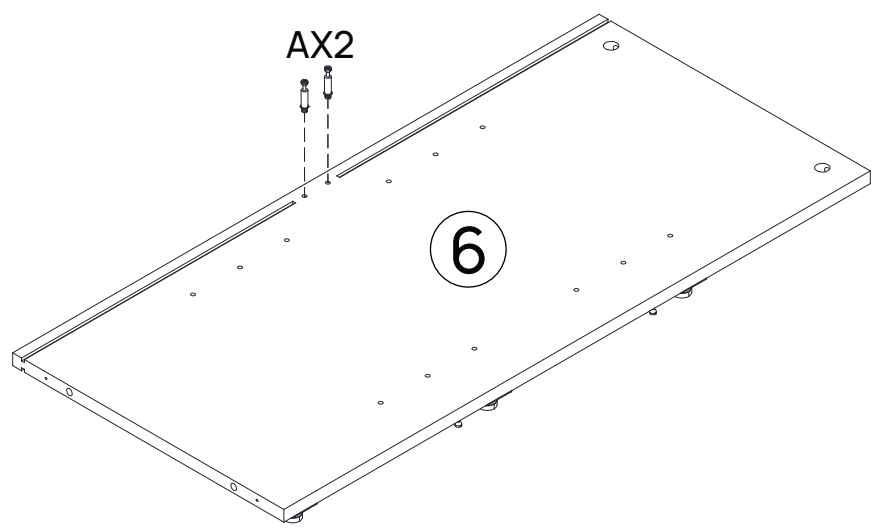



A



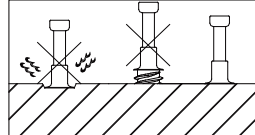
A*6	E*9	CL*3
		


Step 10



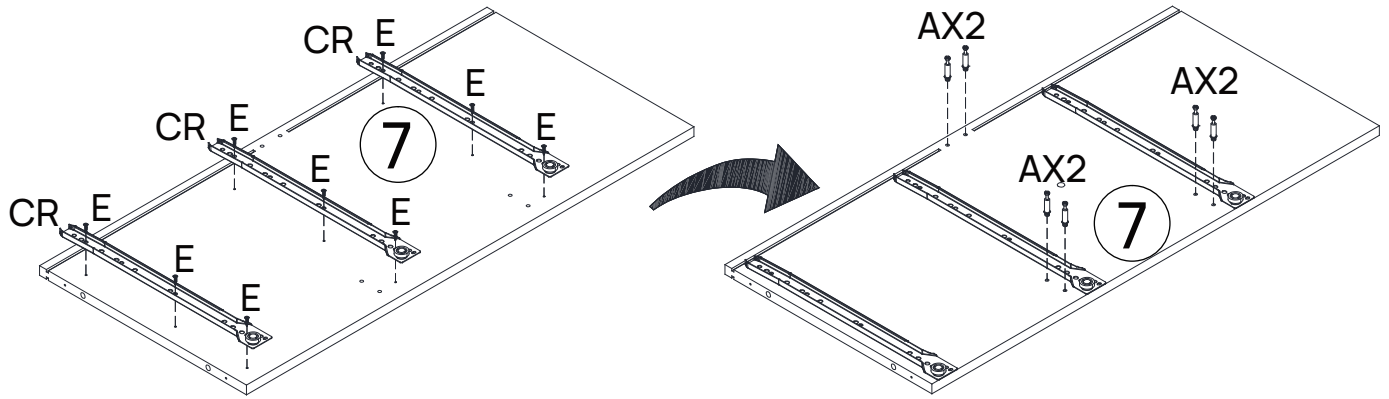
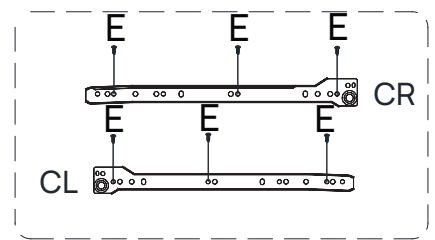


A



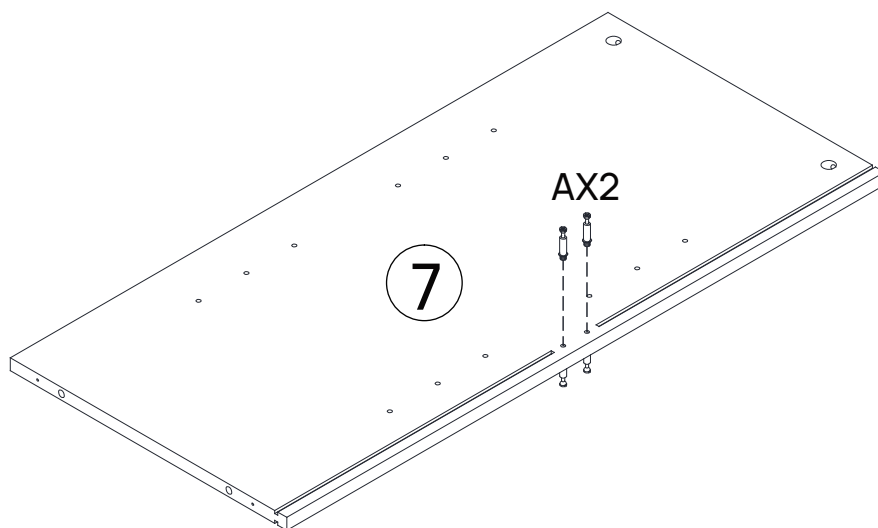
A*2


Step 11



A*6	E*9	CR*3

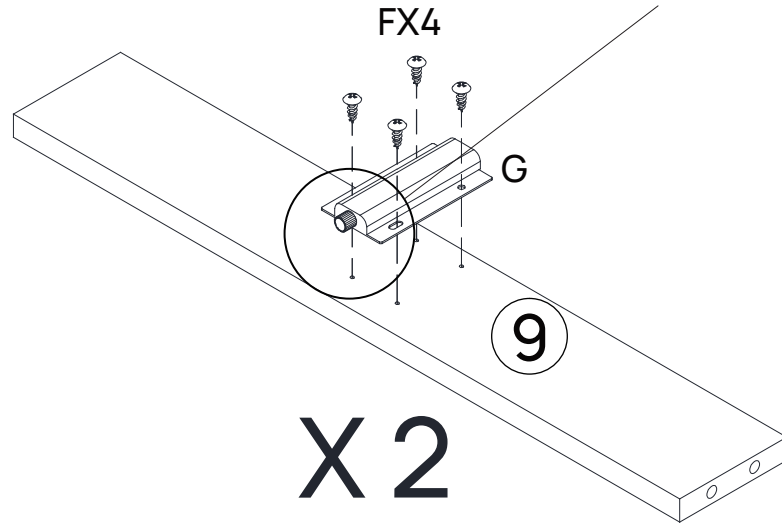
Step 12

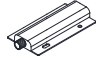



A*2

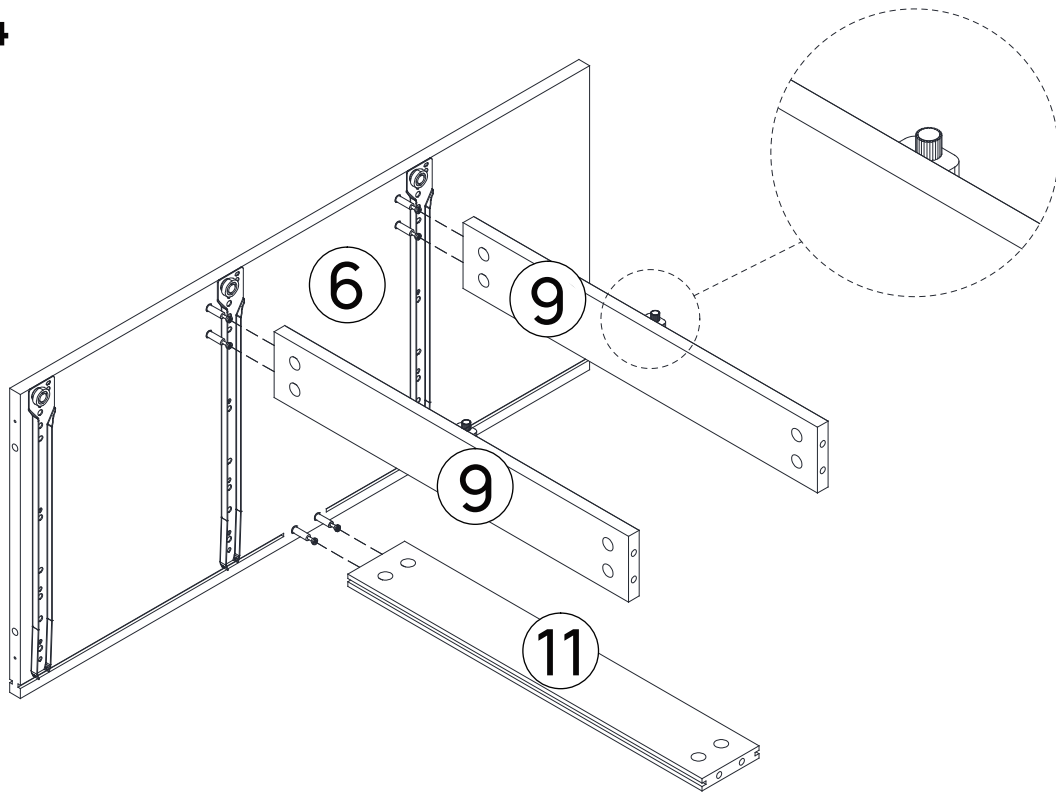
Step 13

Pay attention to the orientation of the rebounder. The wider side of the pilot hole is the front side of the rebounder.

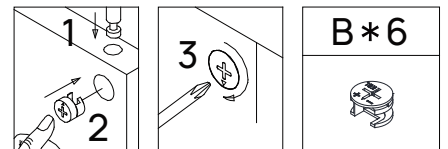
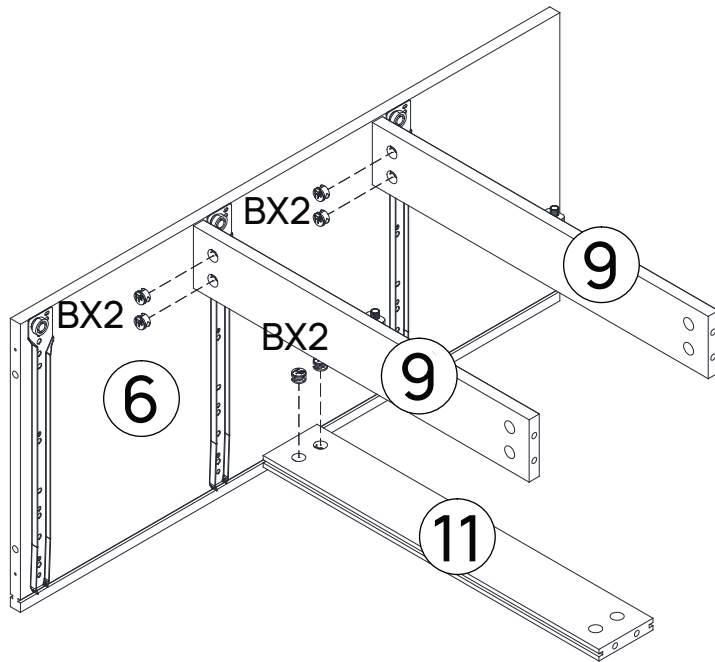


G*2	F*8
	

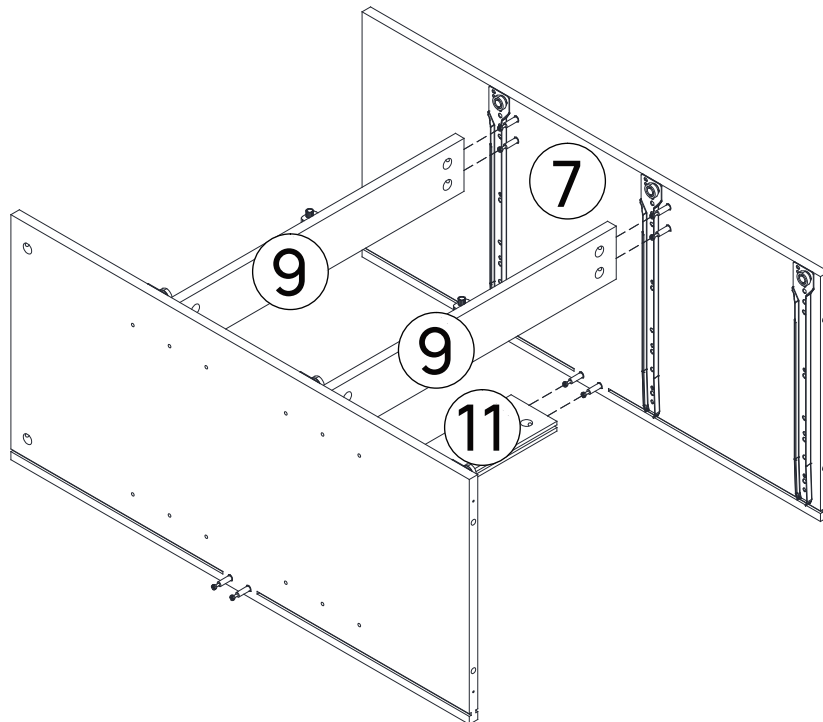
Step 14



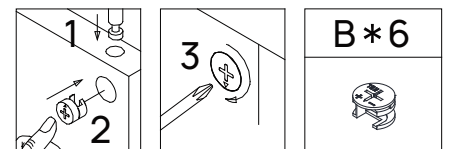
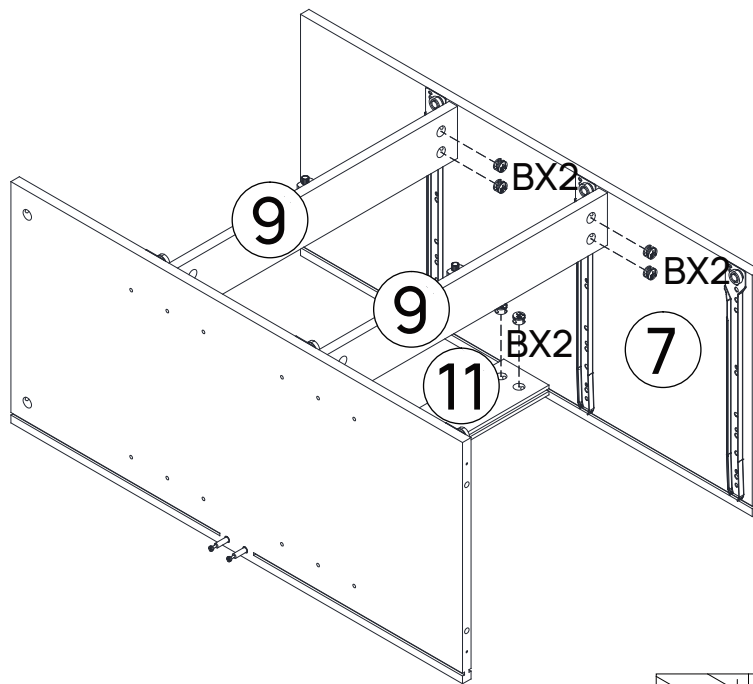
Step 15



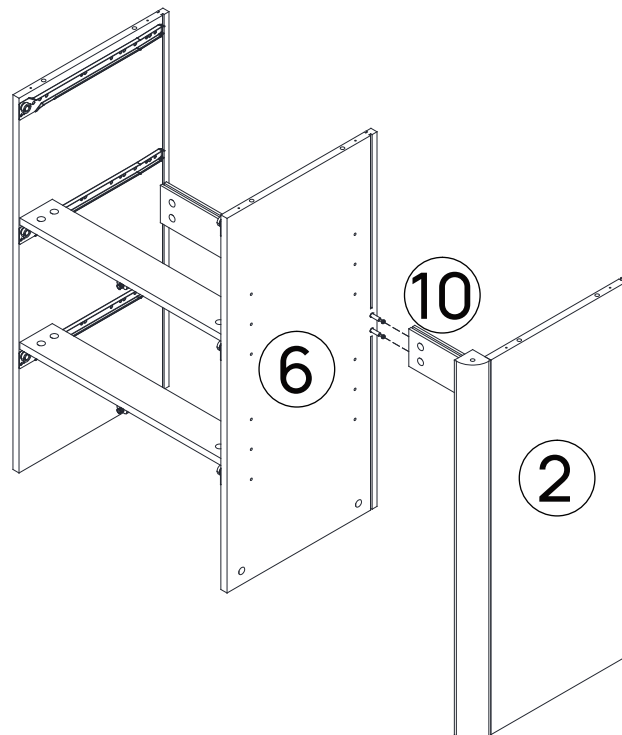
Step 16



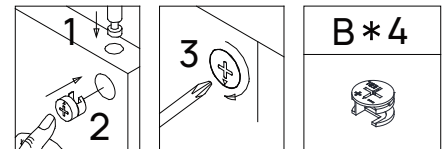
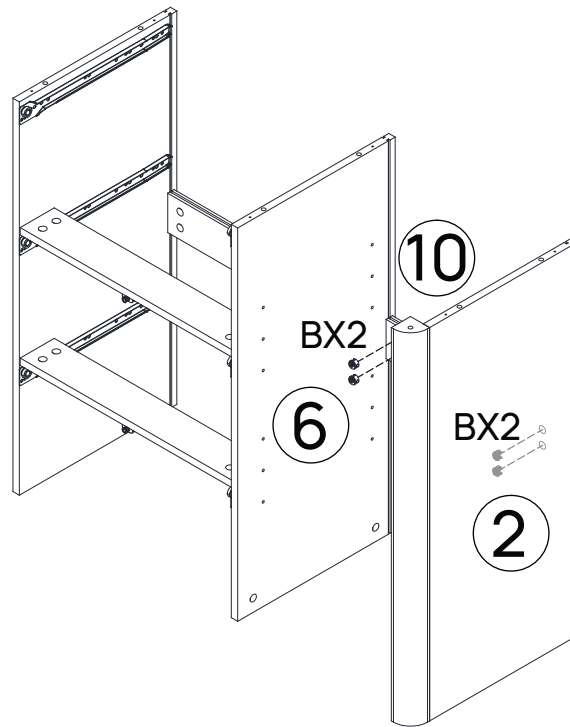
Step 17



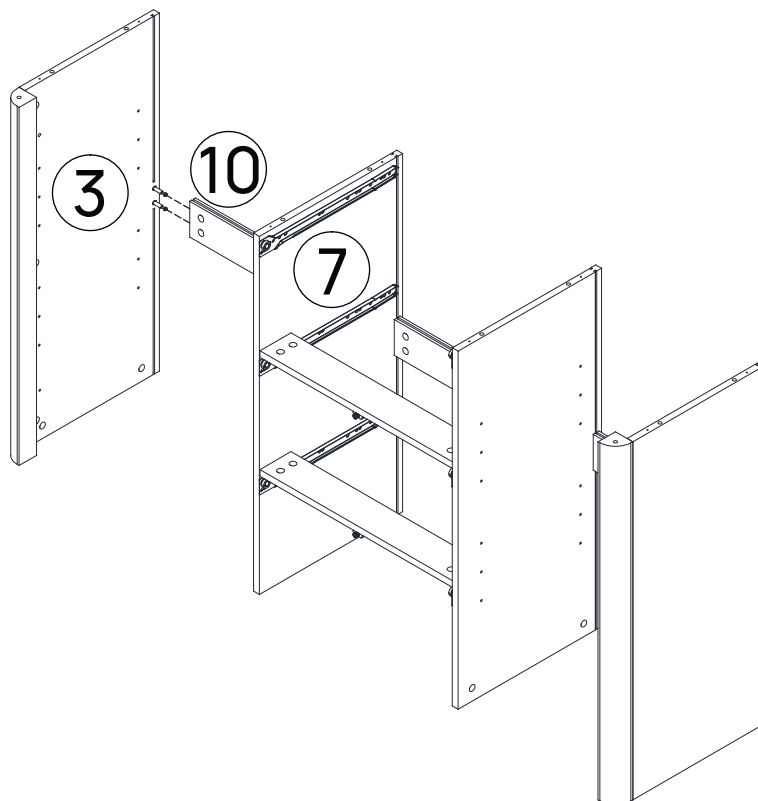
Step 18



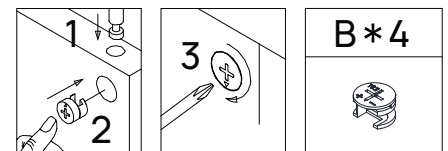
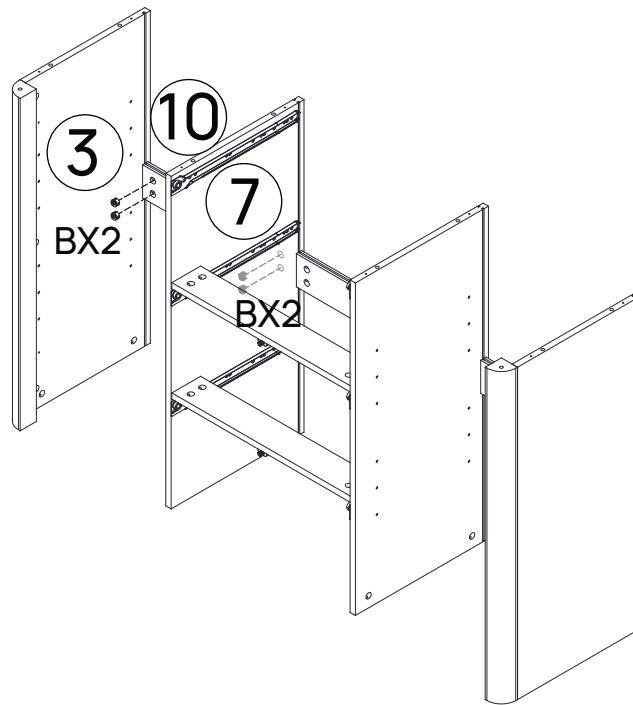
Step 19



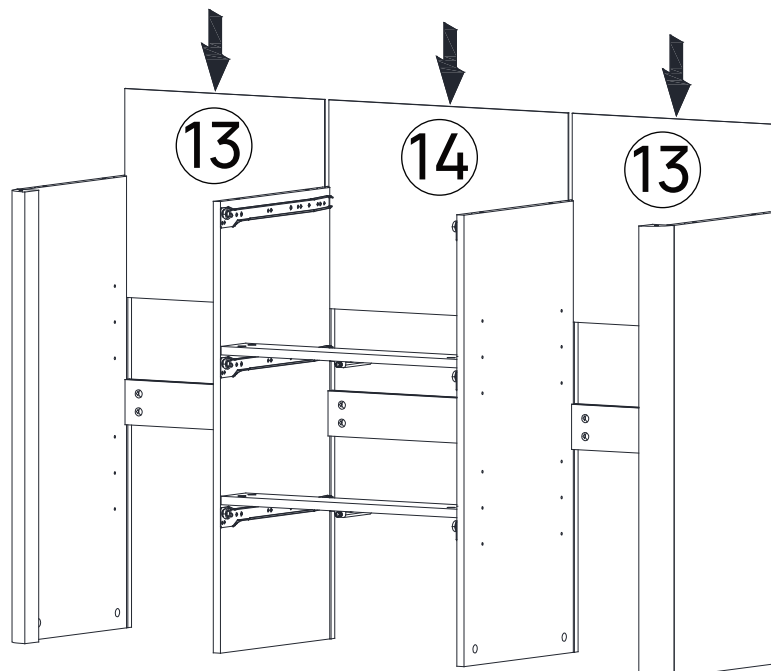
Step 20



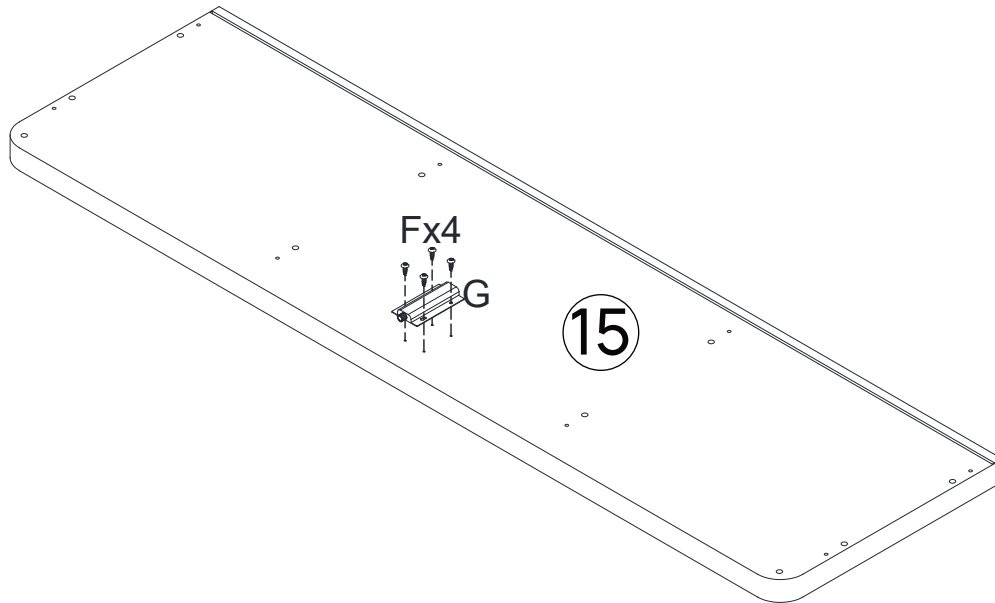
Step 21

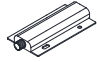



Step 22

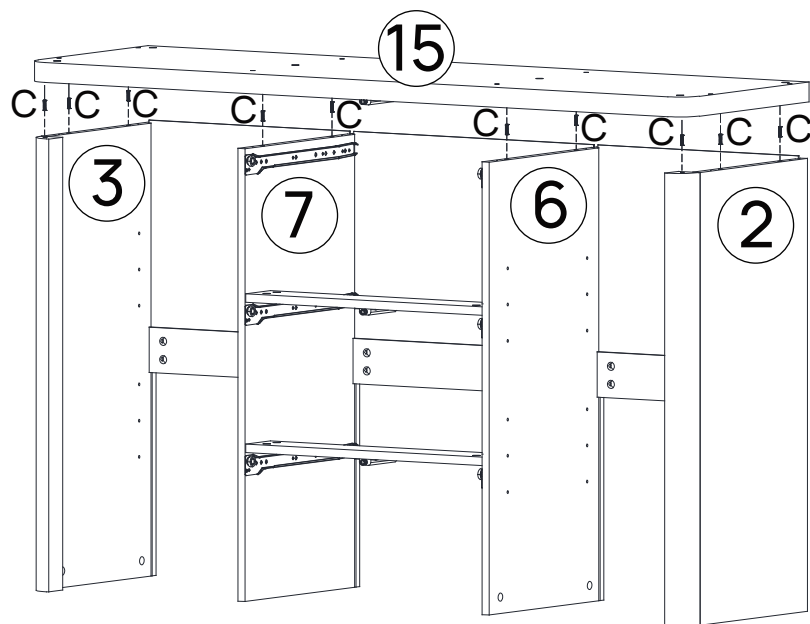



Step 23



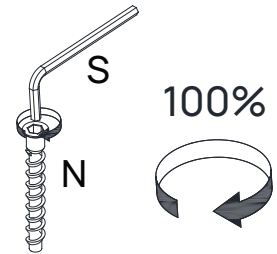
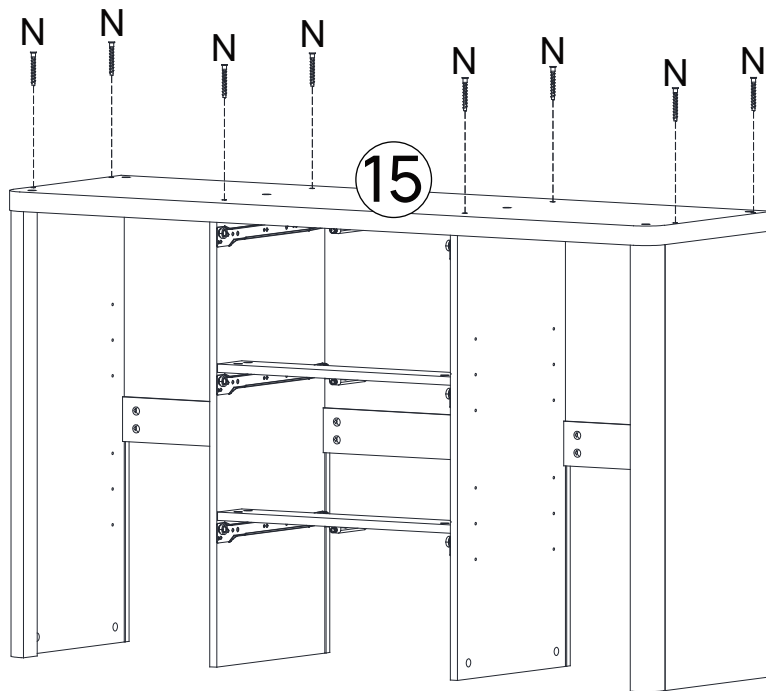
G*1	F *4
	



Step 24



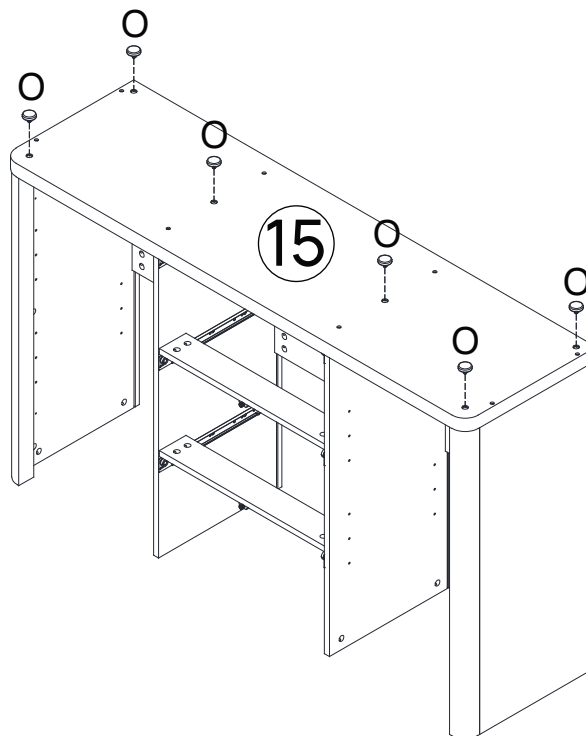
C*10



Step 25



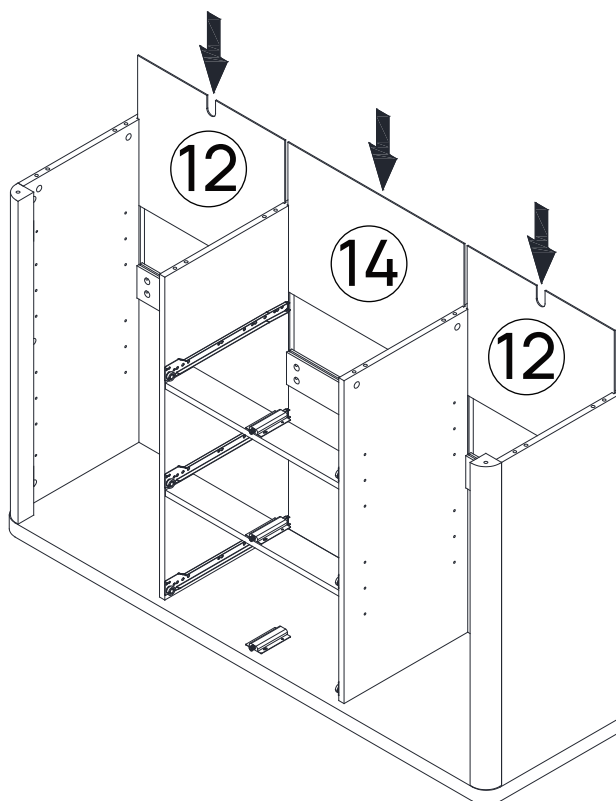
S*1	N*8
	

Step 26

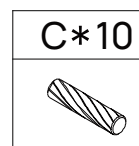
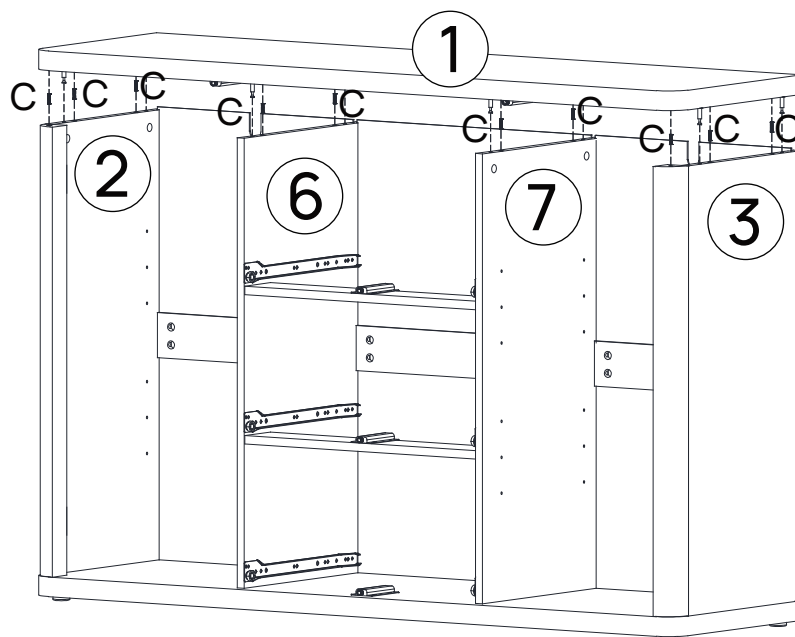


O*6


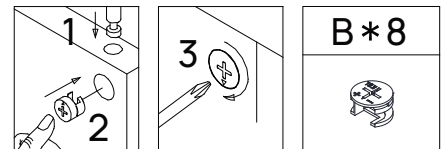
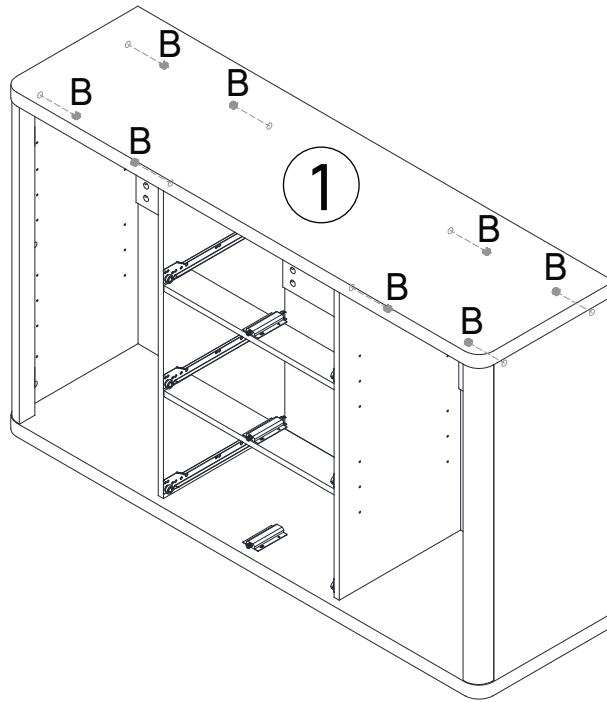
Step 27



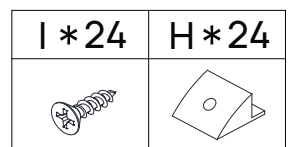
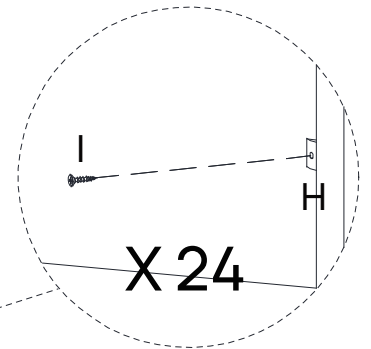
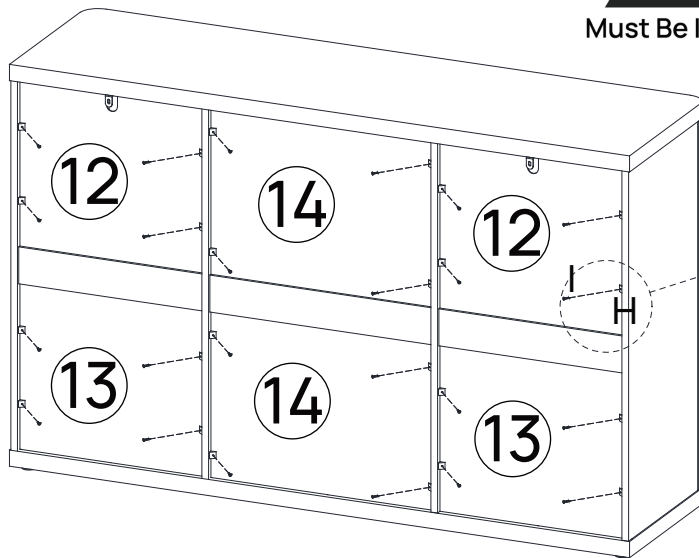
Step 28



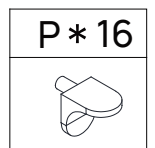
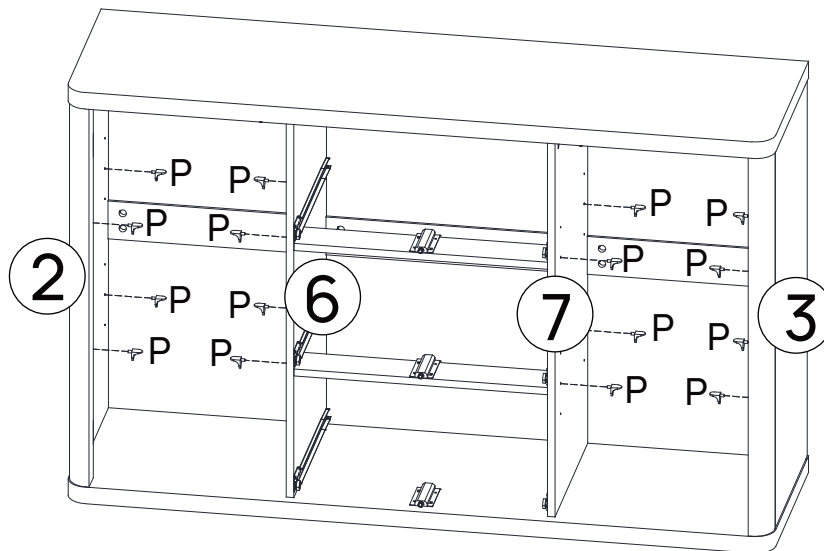
Step 29



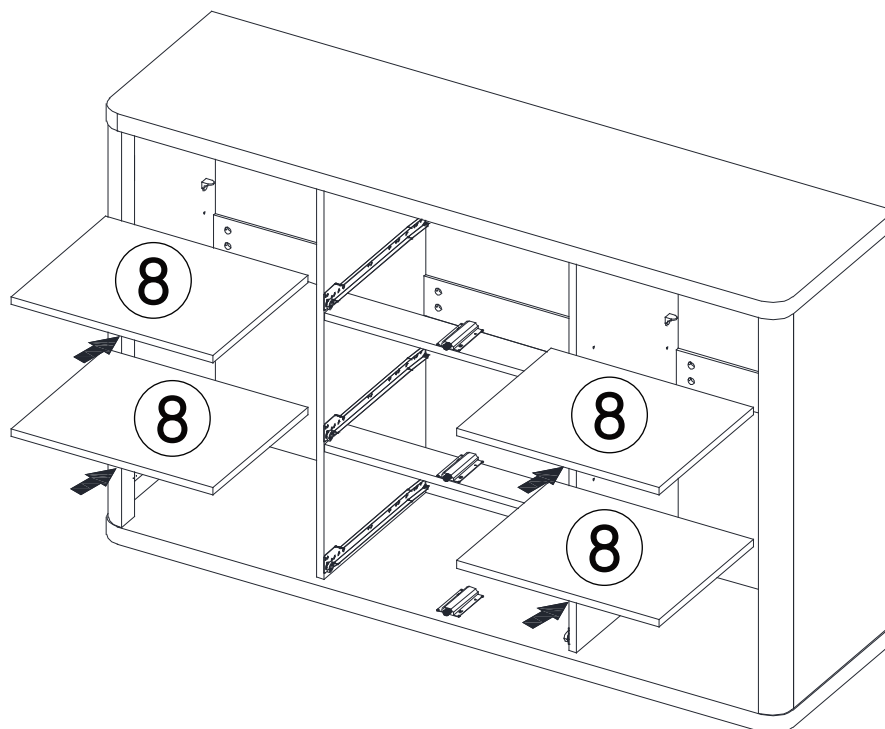
Step 30



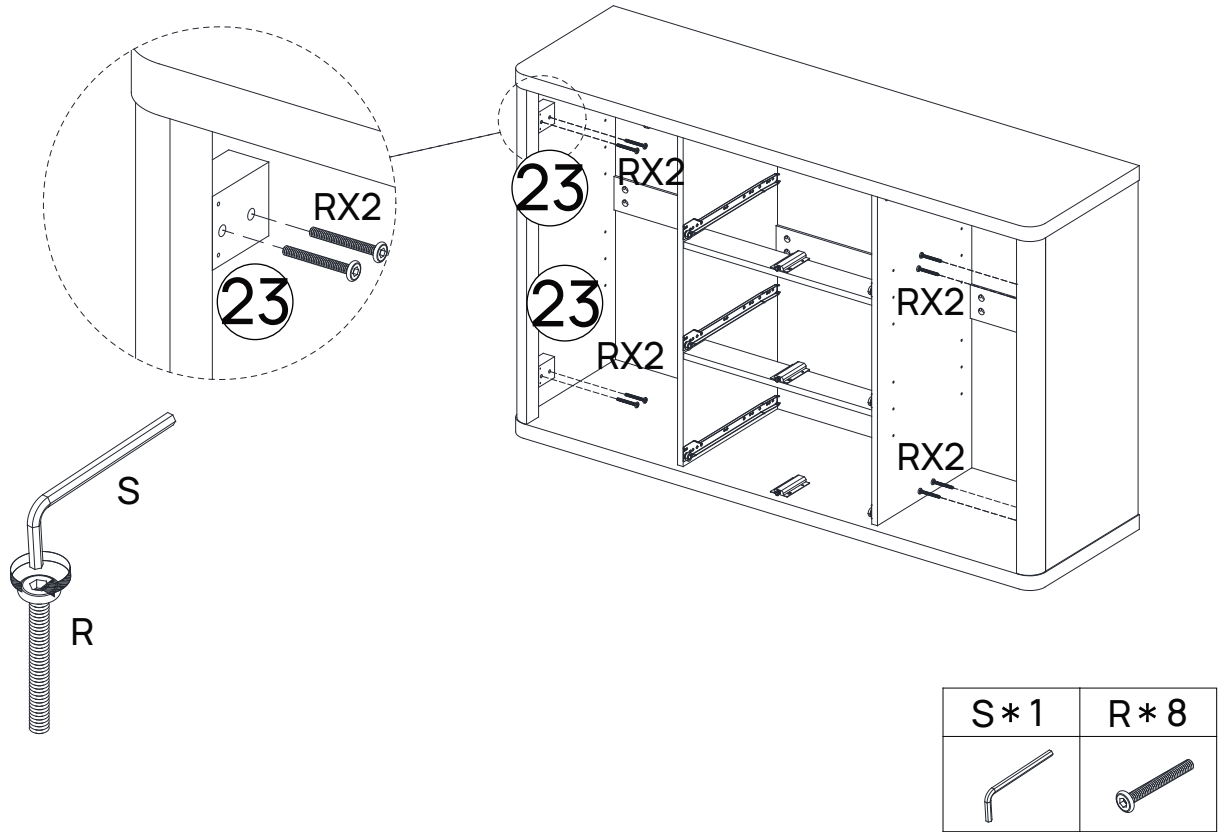
Step 31



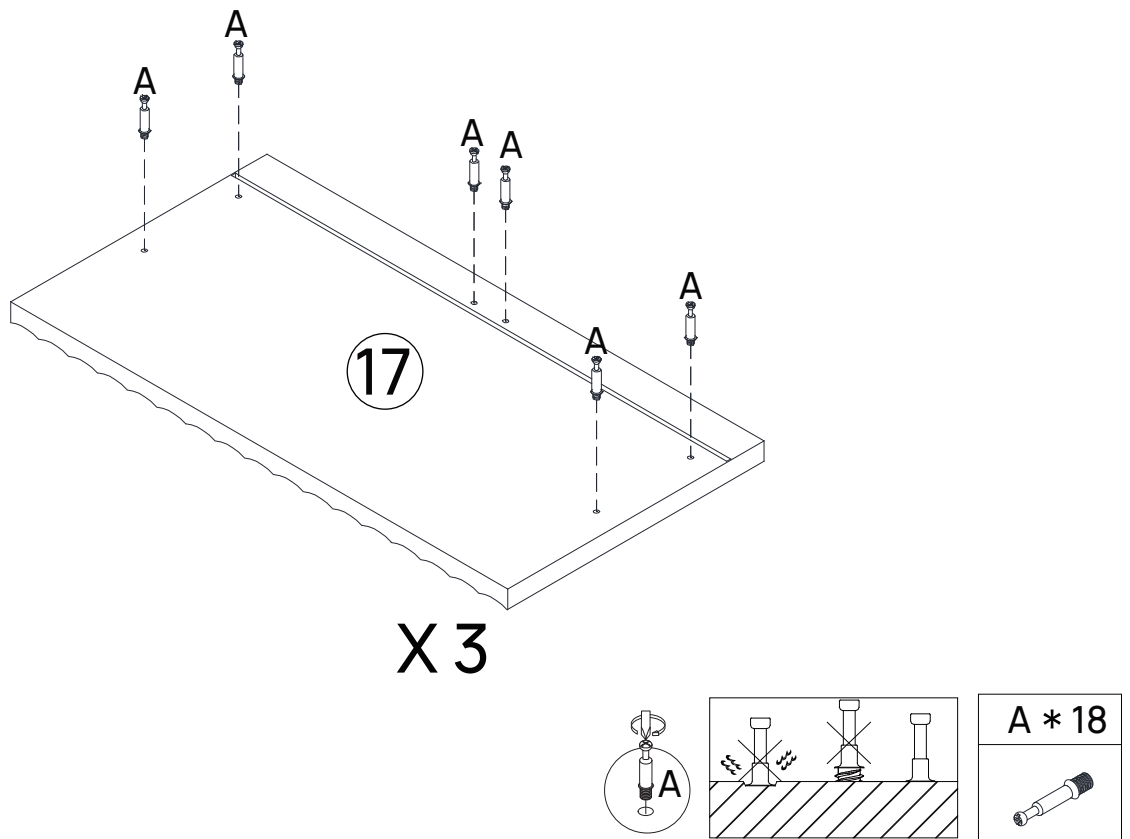
Step 32



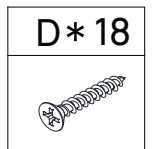
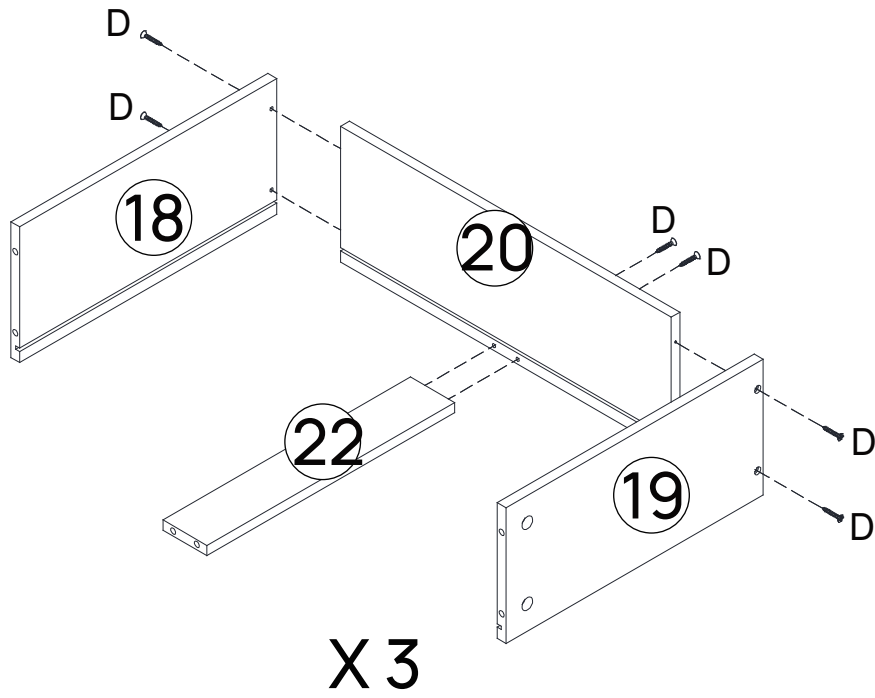
Step 33



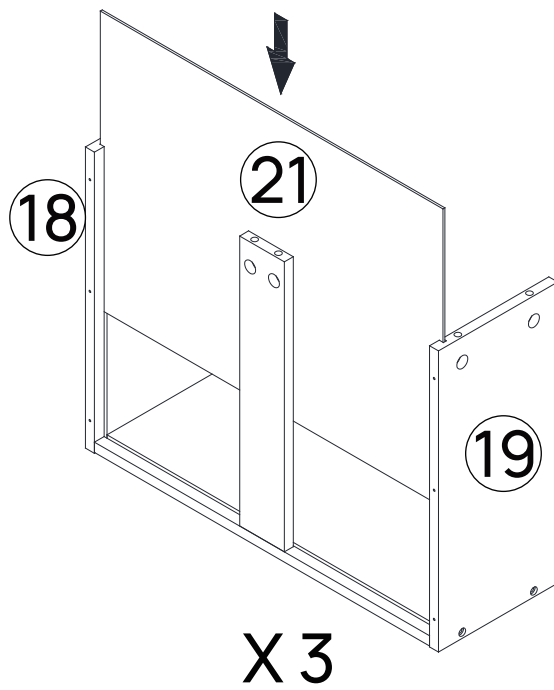
Step 34



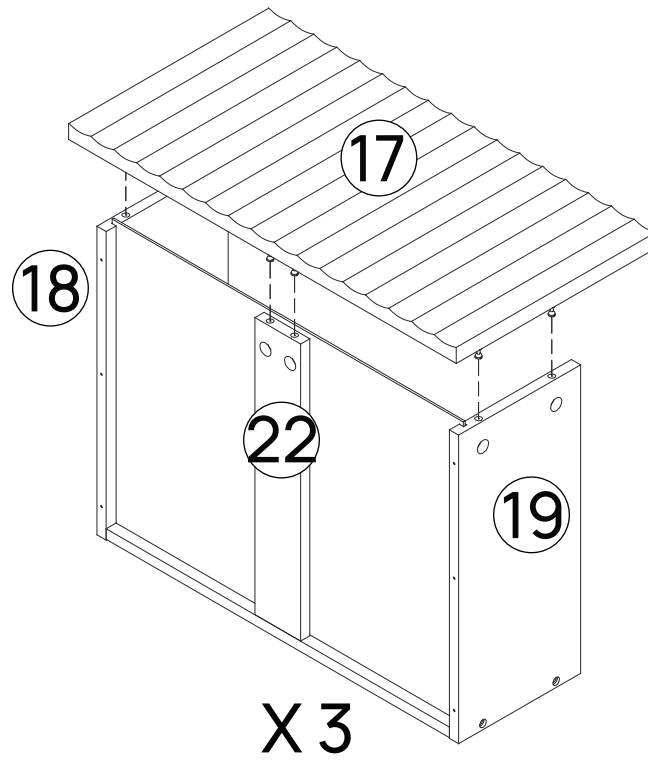
Step 35



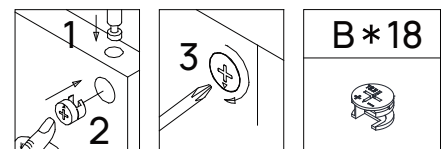
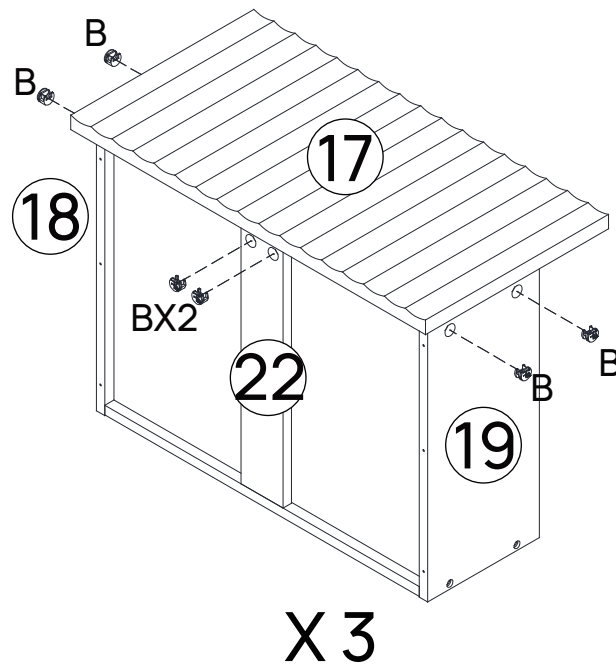
Step 36



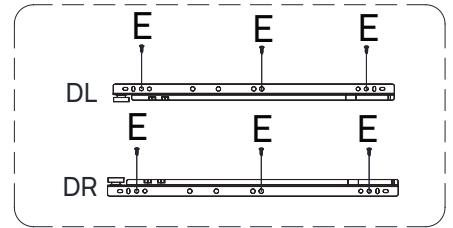
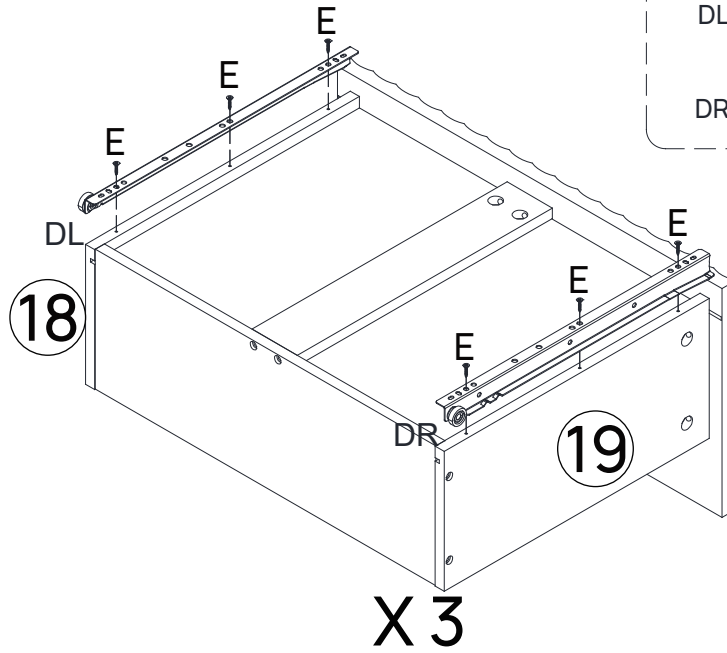
Step 37






Step 38



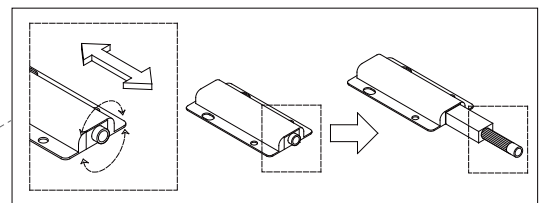
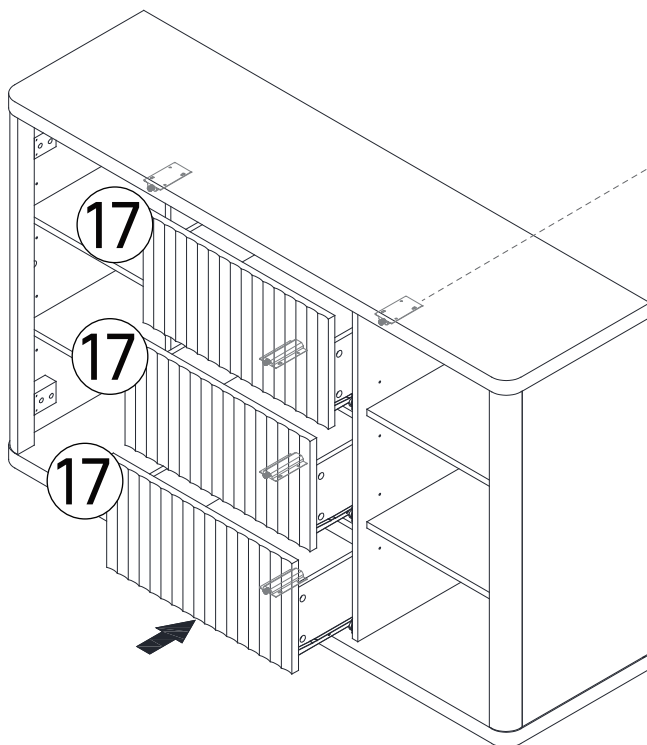
Step 39



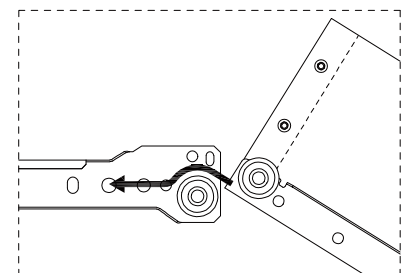
E * 18	DL* 3	DR* 3
		

Step 40

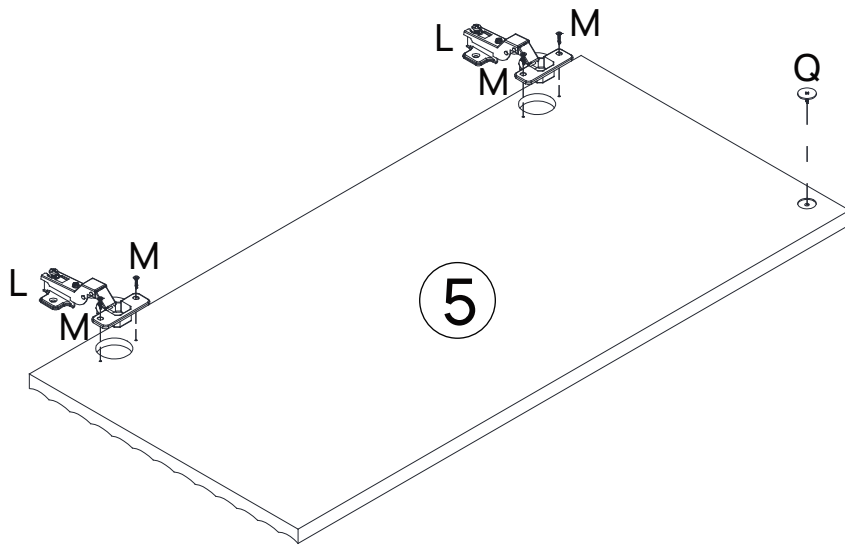
Note: You can adjust the knob of the bouncer to control the bouncing effect.



Please note that the drawers must be installed as indicated by the arrows.

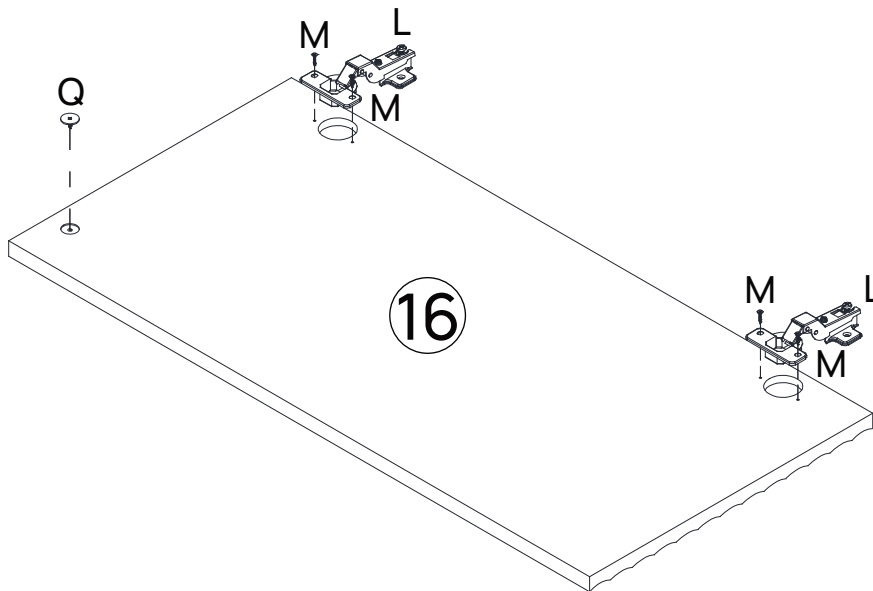


Step 41



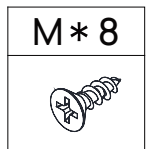
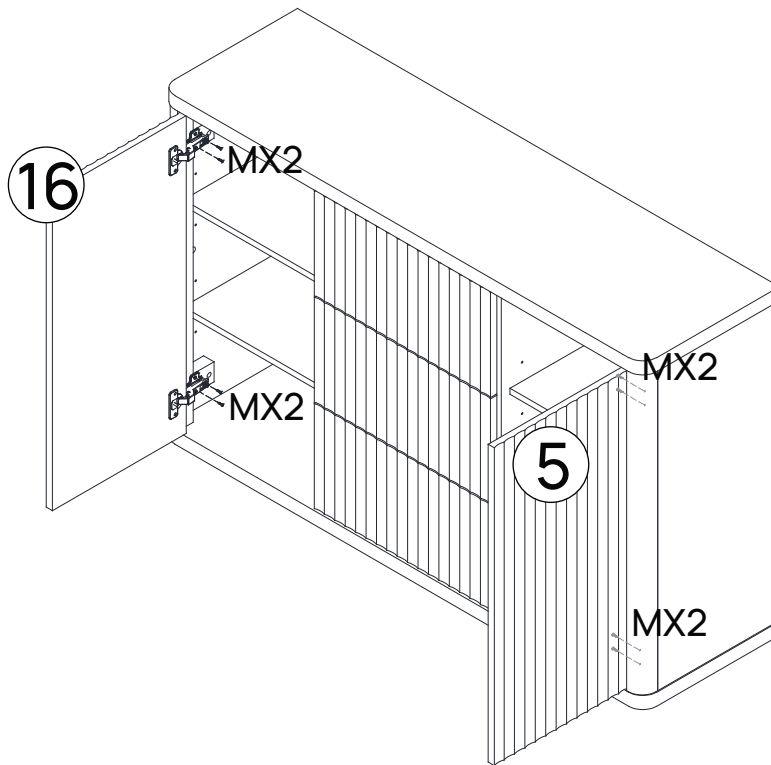
Q * 1	L * 2	M * 4

Step 42

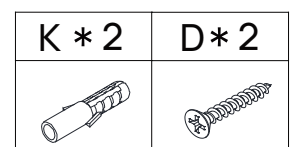
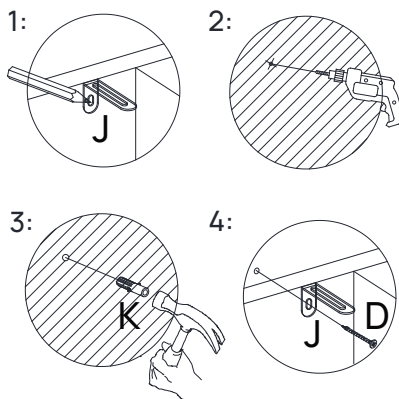
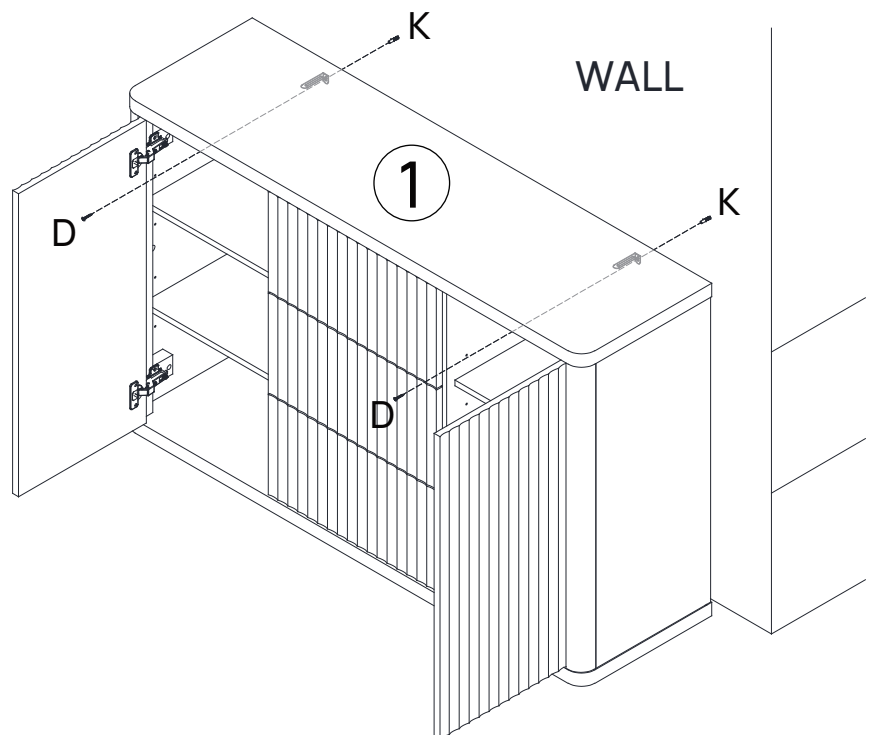


Q * 1	L * 2	M * 4

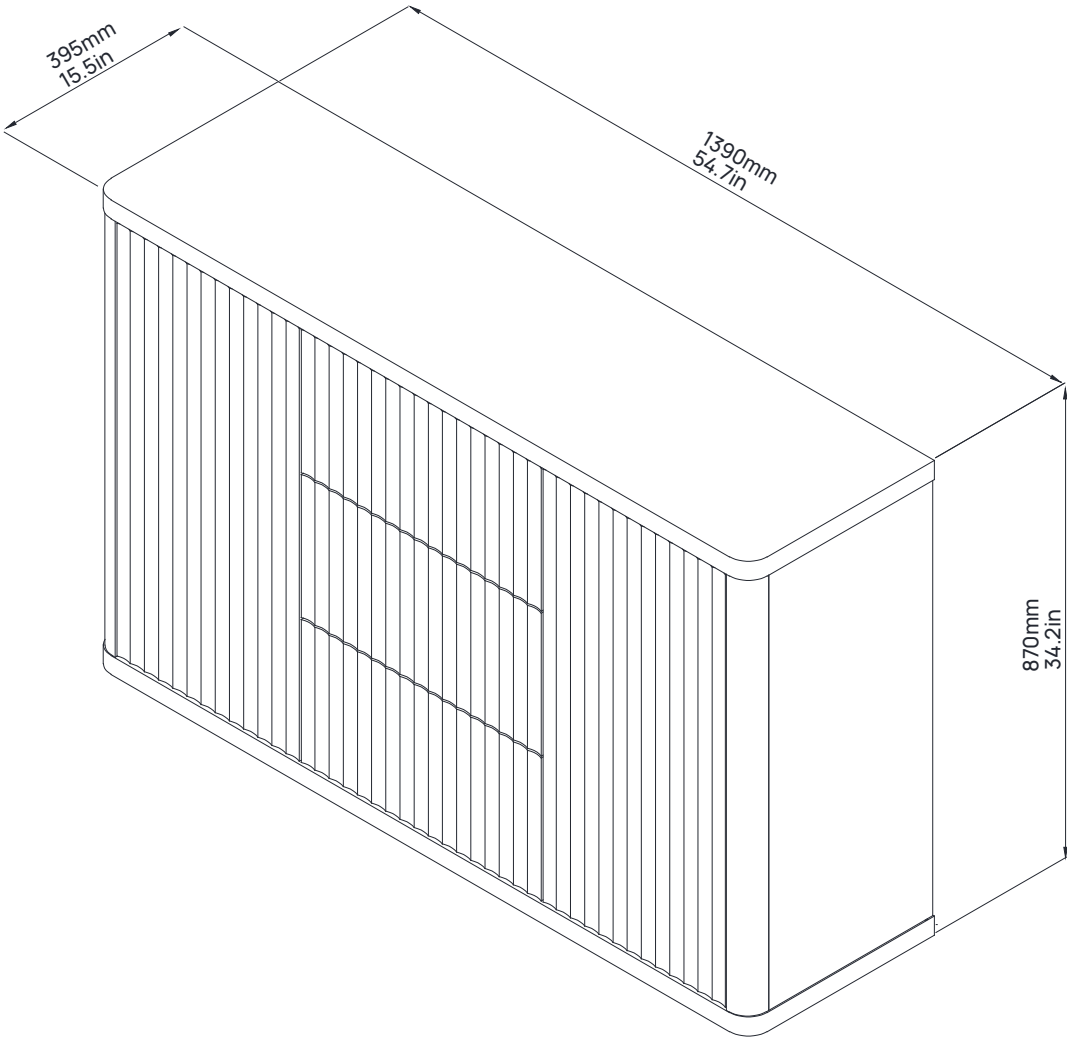
Step 43



Step 44



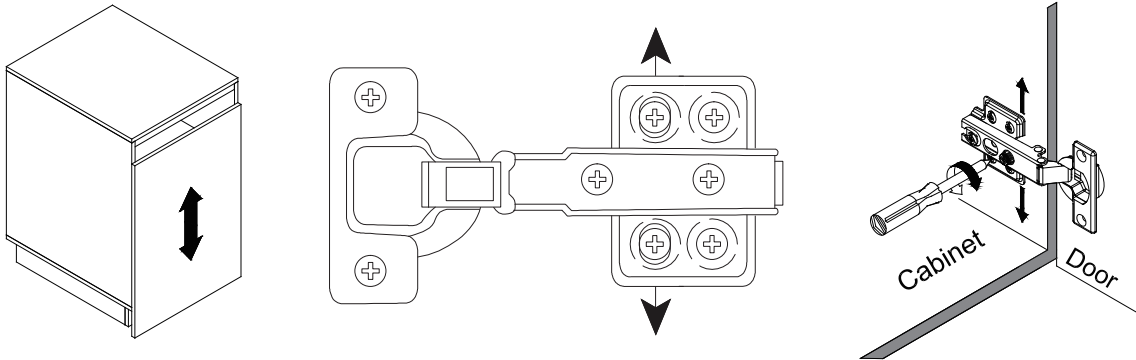
Step 45



Cabinet Door Adjustment Instructions

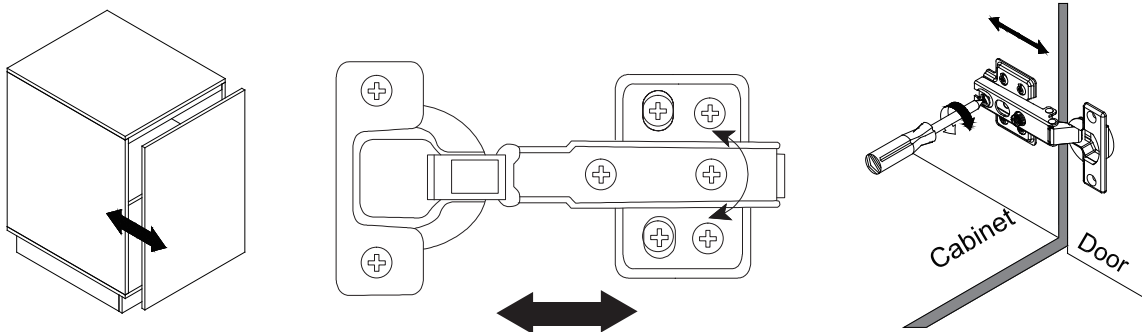
Height adjustment:

- Locate the height adjustment screws on the hinge.
- Use the Phillips screwdriver to either tighten or loosen the screws to raise or lower the cabinet door as desired.



Side-to-side adjustment:

- If the cabinet door needs to be moved closer to or away from the cabinet frame, locate the side-to-side adjustment screws on the hinge.
- Use the Phillips screwdriver to adjust these screws and gradually move the door in the desired direction.



Depth adjustment (if applicable):

