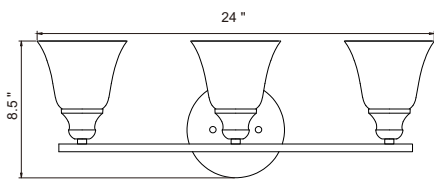
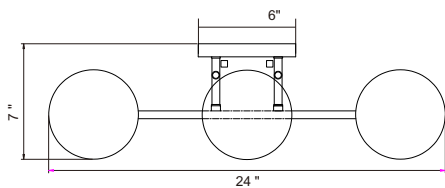


3-Light Vanity Fixture



- 3-Light vanity light
- Alabaster Glass
- Metal structure in brushed nickel finish
- 3*E26 Light bulb(Bulbs not included)
- Easy installation
- Can be mounted upward or downward



VLT2401-BN

Model

L 24" x H 7" x H 8.5"

Size(inch)

E26

Bulb Base

60W per light

Max Power

Brushed Nickel

Finish

Technical support available at Monica@wayspride.com.

LIMITED ONE YEAR WARRANTY

If within one(1) year from the date of purchase, the product fails due to a defect in material or workmanship, WaysPride LLC(Genesis Lighting) will repair or replace it free of charge.

WaysPride LLC will not be liable for incidental or consequential damages to purchases, or any other party.

For any loss, damage, injury or expense of any kind or nature caused directly or indirectly by the product or the failure of the product to operate properly.

Warranty service is available by mailing postage prepaid to WaysPride LLC.

730 Dawson DR KH0158, Newark, Delaware, 19713 USA.

A valid copy of original invoice and return merchandise authorization (or RMA) are required for all warranty services.

INSTALLATION STEP:

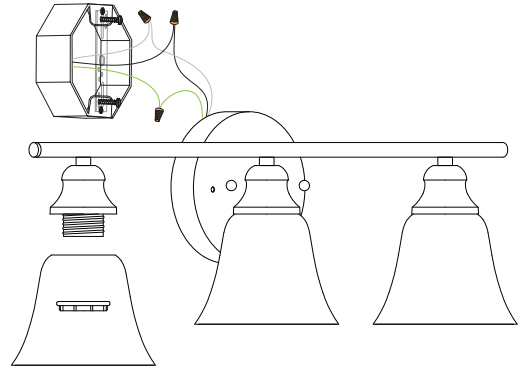
1. To avoid electrical shock or component damage, disconnect power before installation or servicing. Please refer to the diagram of the installation guide below to install the fixture.

2. Drive the screws into the outlet box.

3. Put light fixture through the screw on the crossbar and fix the fixture on the wall with Two Screw-Caps.

4. Install Bulb on E26 Base.

5. Turn on the power and switch to activate the fixture.



WARNING

RISK OF PERSONAL INJURY-PLEASE READ THESE INSTRUCTIONS CAREFULLY.FOLLOW ALL INSTALLATION INSTRUCTIONS AND OBSERVE ALL WARNINGS.

Make sure the "supply" voltage corresponds to the "rated" product voltage 120V 60HZ. Retain these instructions. Note: If you are an installer ,please give these instructions to the property owner for future reference.

Risk of injury: Always wear the necessary safety equipment to prevent injuries when opening,handling, installing and maintaining this product.

Risk of Fire: Always consult with a qualified electrician to ensure the correct branch circuit conductor is utilized.

Risk of electrical shock: This product must be installed in accordance with the applicable installion code by a professional familiar with the construction and operation of the product. The professional should also be aware of, and understand the hazards involved with the installation of this product.