



www.thebioflame.com

User's Manual & Safety Instructions

Burner/Firebox Collection



User's Manual & Safety Instructions

Clearances and Installation

Ensure that the mouth of the flame is positioned a minimum of 1500mm [59.1in] away from curtains, flammable materials, and other sources of ignition. Be aware of drafts. The floor must be level and the Burner positioned on a flat surface. The Burner must only be placed into non-combustible materials and must be installed in accordance with the outlined safety requirements and clearances. Please send drawings to your

local representative to confirm the setting complies with the manufacturer's requirements prior to installation.

Burner Clearances

Bio Flame Burners can be installed into two (2) types of settings:

A. T hose that are encased by non-combustible materials similar to that which you would find in a traditional masonry set-up. We refer to this installation type as "WITHIN A FIREBOX SETTING"

B. T hose that are not encased by non-combustible materials and set up in a more modern setting without sides or a top. We refer to this installation type as "WITHOUT A FIREBOX SETTING". This type of setting is not C-UL US approved.

A. INSERTING Within a firebox setting

BURNERS

WIDTH – DEPTH - OVERHEAD HEIGHT – REAR - FRONT

60"	1800mm [70.9in]	350mm [13.8in]	500mm [19.5in]	40mm [1.6in]	50mm [2.0in]
48"	1500mm [59.1in]	350mm [13.8in]	500mm [19.5in]	40mm [1.6in]	50mm [2.0in]
38"	1200mm [47.2in]	350mm [13.8in]	500mm [19.5in]	40mm [1.6in]	50mm [2.0in]
24"	1000mm [39.4in]	350mm [13.8in]	500mm [19.5in]	40mm [1.6in]	50mm [2.0in]
16"	800mm [31.5in]	350mm [13.8in]	500mm [19.5in]	40mm [1.6in]	50mm [2.0in]
13"	725mm [28.5in]	350mm [13.8in]	500mm [19.5in]	40mm [1.6in]	50mm [2.0in]

B. INSERTING WithOUT a firebox setting

User's Manual & Safety Instructions

BURNERS

(Only if Non-combustible)*

60"	2100mm [82.7in]	50mm [2.0in]	600mm [23.6in]	40mm [1.6in]
48"	1800mm [70.9in]	50mm [2.0in]	600mm [23.6in]	40mm [1.6in]
38"	1500mm [59.1in]	50mm [2.0in]	600mm [23.6in]	40mm [1.6in]
24"	1200mm [47.2in]	50mm [2.0in]	600mm [23.6in]	40mm [1.6in]
16"	900mm [35.4in]	50mm [2.0in]	600mm [23.6in]	40mm [1.6in]
13"	800mm [31.5in]	50mm [2.0in]	600mm [23.6in]	40mm [1.6in]

*WARNING! Fire hazard. The rear wall should be non-combustible. If it is combustible, you must allow at least 600mm [23.6in] clearance between the wall and the rear of the Bio Flame Burner.

NOTE: The burner is not approved for independent installation under C-UL US.

Custom made fireboxes must:

- Be made out of a non-combustible material such as stainless steel
- Be constructed to accommodate a Top Tray
- Have built in spacers of 20mm [0.8in] on all sides to ensure that it does not sit directly against any combustible materials and an air gap is incorporated for insulation around the box construction. The use of insulation wool is permitted.

The Bio Flame recommends using the Burner in a Firebox manufactured by The Bio Flame only. The Bio Flame is not liable for any injuries or damages sustained through the use of custom made or privately commissioned Fireboxes.

A fire extinguisher is strongly recommended.

Environmental Conditions

WARNING: Ensure that your fire is positioned away from flammable materials and other sources of ignition at all times. Pay very close attention to positioning the fire away from items that may move as a result of wind and drafts. For example trees/branches/curtains/

User's Manual & Safety Instructions

paper and the like. The base of the burner within the model must never come into direct contact with flammable materials. Side clearances to fixed and stable furniture items that are not susceptible to movement such as lounges or patio furniture must remain a minimum of 600mm [23.6in] away from the flame at all times. Overhead clearances to items that are susceptible to movement (e.g. Curtains/Trees) must remain a minimum of:

- Indoors: 1500mm [59.1in] away from the flame at all times.
- Outdoors: 2000mm [78.7in] away from the flame at all times.

Note: Stainless steel will rust or corrode over time if contamination or debris is not cleaned or removed immediately. When not in use, it is recommended that you protect your fireplace from water damage or corrosion with a protective cover and always close the Burner Lid included with your model to safeguard the burner.

Installation

There are many different variations available for installing the Burner. In all cases, the Burner must be:

- Installed into non-combustible material ONLY, such as stainless steel, concrete, brick and stone
- Installed after all gas connections or pipelines in the area are disconnected and made safe by an appropriately qualified and licensed professional
- Installed and operated in a fixed and secure position before filling, lighting and operating. Burners are not meant to be moved because movement creates the risk of accidental fuel spillages. If you move the Burner, make sure no fuel was spilled before you ignite the Burner.

The best location for your Bio Flame is:

- In a large, open space at least 1500mm [59.1in] away from any combustible materials, such as curtains, wallpaper, veneer, etc.
- On a level floor – the floor can be made of any material.
- In a firebox made of non-combustible materials, such as steel, concrete, brick, or stone.

User's Manual & Safety Instructions

- Positioned so that any accumulation of weather debris/pooling of water is eliminated.
- Not installed directly beside or near wallpaper, laminate, veneer or any surface that has not been fire rated (the heat will impact the material).
 - Installed into a setting that has a straight back – the incorporation of angled backs alters the aerodynamics of the flame environment and could lead to an unstable flame behaviour.

Please note that:

- Any furniture items or fittings directly above or beside the Burner installation must be deemed suitable for heat tolerances by their manufacturer e.g. electronic items including screens and entertainment equipment, wallpaper, laminates, veneers, glues and reconstituted materials.
- A heat reflective panel made of non-combustible material (ideally stainless steel) must be installed as the surround and top of the fireplace setting to assist in heat distribution. The Bio Flame is not liable for any injuries or damages sustained through the use of panels not manufactured by The Bio Flame
- Glass or mirrored surfaces near the Burner installation must be toughened.
- If inserting an Burner into an existing masonry fireplace, adjust the damper within the existing fireplace in order to keep the heat from escaping through the flue.
- In some countries, national or rural restrictions may apply and/ or approvals from building authorities may be required. Please ensure you contact the appropriate parties before installing your Bio Flame.

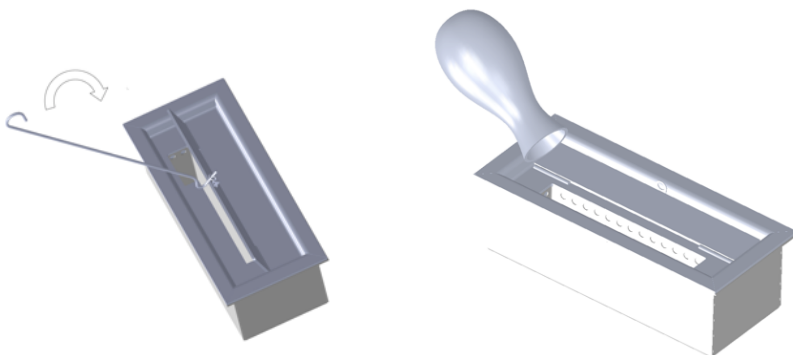
WARNING! FIRE HAZARD. DO NOT PACK REQUIRED AIR SPACES, (the AREA between the firebox and the spacer) WITH INSULATION OR OTHER MATERIALS. THE AIR SPACES ARE NEEDED FOR PROPER VENTILATION OF THE BURNER.

A fire extinguisher is strongly recommended.

Direction for Use

User's Manual & Safety Instructions

Step 1: Lift the lid with the extinguish tool. Fill the burner with the ethanol, watch carefully until you reach under the level of the “Max” line. Do not overfill or spill.



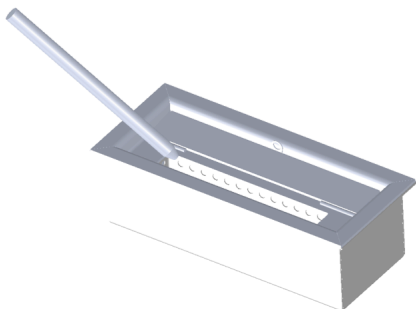
CAUTION:

Please ensure your pebbles or logs (not supplied) are not covering the opening in case of accidental spillage.

Any spilled ethanol must be immediately removed with an absorbent tissue and cleaned with water to prevent ignition outside the burner reservoir.

**Fuel must be kept in safe distance (min. 1 m/40 inch) to the fireplace.
Do not place fuel in front of the fireplace.**

Step 2: Use a long match or a long-end lighter to ignite. When igniting, keep a safe distance at arm's length.



CAUTION:

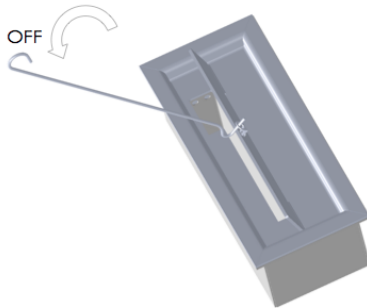
User's Manual & Safety Instructions

Fuel will burn low at first. Please allow 10-15 minutes to reach the optimum temperature and flame height.

Avoid drafts for long burning time.

Always maintain a safe distance of at least 1 meter (40in) from the fireplace when the flame is lit.

Extinguishing



CAUTION: Never extinguish the flame with water!

1. Let the fuel burn out completely if possible. This prevents alcohol left in the burner and deflagration when reigniting.
2. If you wish to extinguish the fire before the fuel has completely burned out. Please use the control tool to fully close the lid and cover the burner in a fast motion, completely extinguish the flame.
1. In case the flame is not extinguished immediately. Repeat the above instructions until the flame is fully extinguished.
2. **Do not** touch the fireplace while burning. Please allow at least 15 minutes to cool down before touching the fireplace after flame is extinguished.
3. It is urgently recommended that you keep a Class B fire extinguisher at hand close to the device in case of fire.
4. Risk of burns. Do not operate the appliance without the glass in place.

Refilling

Allow the burner to cool down for at least 15 minutes before refilling.

WARNING: Never refill the burner when the fireplace is operating or

User's Manual & Safety Instructions

still hot, **Never** store fuel in the living room.

CAUTION: Never pour fuel into the burning flame.



Cleaning:

1. The burner surfaces must be cleaned regularly. Use warm water and washing-up liquid.
2. Check the sliding cover of burner for warp or damage before using.
3. Marks can be best removed with a soft cloth and a mixture of lukewarm water and a small amount of cleaning liquid (ph-neutral). We recommend cleaning the stainless steel items regularly to prevent contamination.

CAUTION:

Never use chemical, steel-wool or scrubbing sponges to clean the fireplace. These can scratch the surface.

The manufacturer cannot be held responsible for any damages resulting out of false use and/ or cleaning of the products.

SAFETY INSTRUCTION

1. When burning ethanol, water-vapor and carbon dioxide are produced.
2. **Never** leave an open fire unattended at any time!
3. Do not use in a room with Oxygen tanks in use. Do not use the fireplace in a bathroom, a room where sleeping accommodation is provided or any other small room.

CAUTION:

User's Manual & Safety Instructions

1. Fireplace and burner get hot while in operation. **Do not** touch the fireplace while burning. Please allow at least 15 minutes to cool down before touching the product after flame is extinguished.
2. **Risk of burns.** Do not operate the ethanol fireplace without completed assembly.
3. **Never** pour fuel into an open flame or into the burner reservoir unless it has cooled down for at least 15 minutes after used.
4. **Do not** place any flammable material within 1 meter/ 40 inches around the fireplace. A safety distance of at least 2 meters/80 inches should be kept from any window or curtain.
5. **Do not** burn under over hanging items.
6. **Do not** smoke while handling the fuel.
7. **Avoid** airflow in the room where the fireplace is operated.

WARNING:

1. Risk of Explosion
 - i. **Never** use any fuel other than Bio Ethanol. Never use gasoline.
 - ii. **Never** use the appliance in areas where flammable vapors or gas may be present.
 - iii. **Never** store or transport the fuel in other than a metal or plastic container that is acceptable for use with the specified fuel in accordance with the Consumer Chemicals and Containers Regulations 2001 and is the original container for the specified fuel.
 - A) Acceptable for use with the specific fuel.
 - B) Non red in color.
 - C) Is in the original container for the Bio-flame ethanol fuel.
 - iv. **Never** store fuel in the living space or in the same location as the appliance.
2. Do not use the appliance to heat or boil water or use as a cooking appliance.
3. Due to high surface temperatures, keep children, clothing and

User's Manual & Safety Instructions

furniture away.

4. Risk of Indoor Air Pollution - Use ethanol fireplace only in well-ventilated areas and with doors of adjacent room open. Do not obstruct air flow to the burner by piling logs over the burner, but only around it and do not obstruct the burner in any other way or with any other material. People with breathing problems should consult a physician before using the ethanol fireplace.
5. In a house of typical construction, that is, one that is not of unusually tight construction due to heavy insulation and tight seals against air infiltration, an adequate supply of air for combustion and ventilation is provided through infiltration. However, if the unvented decorative appliance is used in a small room where less than 200 cubic feet (5.7m³) of air space is provided for each 1000 BTU per hour of unvented decorative appliance rating (considering the maximum burner adjustment), the door(s) to adjacent room(s) should be kept open or a window to the outside should be opened at least 1 inch (25.4mm) to guard against potential buildup of indoor air pollution. Do not use the appliance in a bathroom or any other small room.”
6. **THIS APPLIANCE HAS NOT BEEN TESTED WITH DOORS OR AN UNVENTED GAS LOG SET. TO REDUCE RISK OF FIRE OR INJURY, DO NOT INSTALL DOORS OR AN UNVENTED GAS LOG SET INTO THIS APPLIANCE. TO AVOID THE RISK OF DAMAGING APPLIANCE MATERIALS AND INCREASING THE RISK OF SPREADING A FIRE, DO NOT USE THESE ITEMS WITH YOUR APPLIANCE**

Warranty:

1. Our fireplaces are guaranteed 2 year, parts and labor. Warranty begins on the date of purchase.
2. Warranty will be applied on presentation of a dated cash receipt and is strictly limited to factory service repair of the piece or pieces that are found to be defective.

User's Manual & Safety Instructions

3. Installations costs will not be reimbursed in any case as damages for any reason whatsoever.
4. Manufacturer will not be held responsible for any incidental or consequential defects, on goods or individuals.
5. The warranty will not be applied if devices have been subjected to abnormal use or if used under other conditions of use than the ones they were intended for.
6. The warranty will not apply in case of deterioration or accident due to negligence, damages caused by failing to maintain and service the device or resulting from an alteration of material.



www.thebioflame.com

7144 Fisher Street SE
Calgary, AB T2H 0W5
Canada

Tel : +1 403 444 8888

Fax : +1 403 539 5888

Email : Info@TheBioFlame.com