



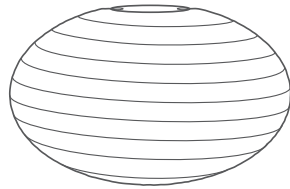
Soji™ Stella Nova - Pendant Lamp Instruction Set

Congratulations on the purchase of your Soji™ Stella Nova Pendant lamp!
Setting up your Soji™ Pendant Lamp is simple and can be accomplished in 10 easy steps:

Parts Included in Package:



Outdoor Light Bulb Fixture
(15 ft. Cord with wall plug-in)



20" Punched Tyvek® Lamp
(durable weather resistant material)



Wire Frame Support



Self-Tapping Ceiling Hook



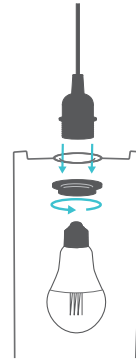
Cord Guide

Instructions:



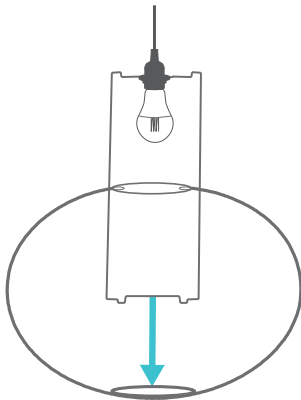
1. Get an **LED** Bulb

To use outdoors and to avoid overheating, it is necessary to use an LED lightbulb with this lamp.



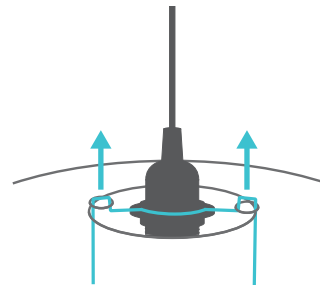
2. Assemble

- screw off retaining ring from fixture
- insert threaded end of fixture through ring of wireframe
- screw back on the retaining ring, large end up.
- screw in LED lightbulb into fixture



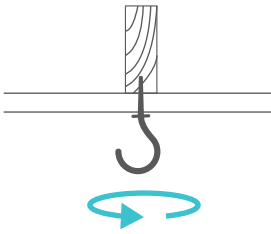
3. Insert into lamp

Insert the assembly into the larger hole in the lamp shade. Set the bottom of the wire frame support into the bottom hole.



4. Attach

Bend the wire frame support outward a little, and insert the top knobs into the small rings located on the sides of the large hole in the lamp shade.



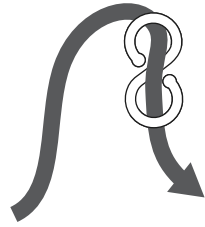
5. Screw in Ceiling Hook

Screw the ceiling hook into your desired hanging location in the ceiling or wall. Be sure to mount on a surface that is mechanically solid.

Different materials require different types of fittings. Always choose screws and plugs that are specially suited to the material.

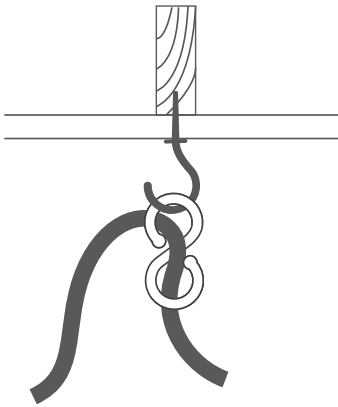
CAUTION:

Do not install in radiant heating ceilings.



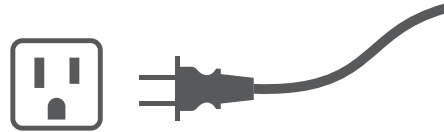
6. Attach S-Ring

Weave cord through s-ring at desired location of where you want to hang from

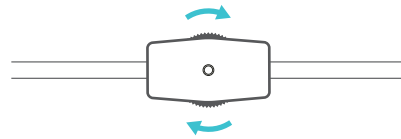


7. Hang

Hook the S-ring on the ceiling hook and adjust the cord as needed for preferred height.



8. Plug it in



9. Turn On

Turn the dial on the switch until it clicks to turn on and off the lamp



10. Enjoy!