

leggett & platt fashion bed

PRODUCT DATA SHEET

STYLE: _____ (BED)
 STYLE: _____ (HDBD)
 DESC. FAIRFIELD BED (HEADBOARD)

DOMESTIC -
 IMPORT X

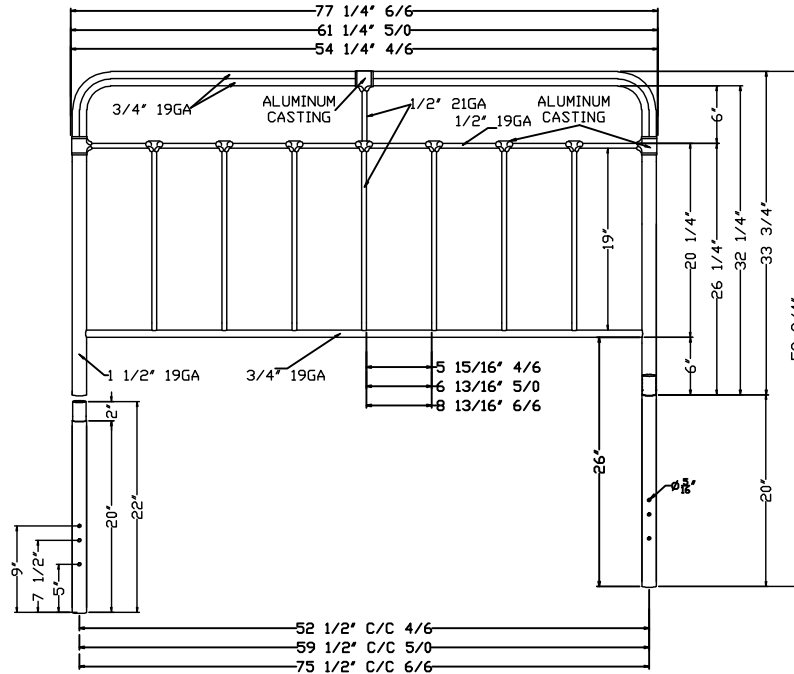
VENDOR INFORMATION:
 LOCATION: TAIWAN
 NAME: JA

HARDWARE NEEDED? DES. - SPINDLE COUNT
 Y X ISSUE: D 3/3 = 5/0 7
 N = _____ DATE: 03-04-13 4/6 7 6/6 7

FINISH(S): DARK ROAST

STEP FINISH(S):

- STEP 1- BLACK POWDER COAT
- STEP 2- PATTERN
- STEP 3- HIGHLIGHT
- STEP 4- LACQUER
- STEP 5- OVEN



#	DESCRIPTION
-	HARDWARE BAG FOR BED #351501
1	(4) 1/4-20 X 2 1/4" COUNTER SUNK ALLEN HEAD SCREW
2	(4) 1/4-20 X 1" FLAT ALLEN HEAD SCREW
3	(4) 1/4-20 NEX NUT
4	(8) 1/4" ID X 5/8" OD FLAT METAL WASHER
5	(1) ALLEN WRECH
-	-
-	-
-	HARDWARE BAG FOR BED #351502
1	(4) 1/4-20 X 2 1/4" COUNTER SUNK ALLEN HEAD SCREW
3	(4) 1/4-20 NEX NUT
4	(4) 1/4" ID X 5/8" OD FLAT METAL WASHER
5	(1) ALLEN WRECH
-	-
-	-
-	-
-	LEG EXTENSION #383902
-	1 1/2" DIA. PLASTIC GLIDE#150950000
-	NOTE: PLASTIC GLIDE PRE-INSTALLED
-	-
-	-
-	-
-	-

ISU	DATE	REVISION
B	12-27-12	ADDING CARTON INFORMATIO
C	01-31-12	ADDING TWIN BED
D	03-04-13	REMOVE TWIN INFORMATION

USE THIS AS REFERENCE ONLY

SIZE	HEIGHT		WHIDT		DEPTH	WEIGHT (LBS.)		# OF CTNS		CARTON DIM'S			CU FT.		U.P.S.	
	HDBD	FTBD	HDBD	FTBD		BED	PACKED BED	HDBD	BED	HDBD	BED	HEADBOARD	BED	HDBD	Y	N
3/3	-	-	-	-	-	-	-	-	-	-	-	-	-	-	-	-
4/6	53 3/4	33 3/4	54 1/4	54 3/4	-	34	20	1	1	58 1/4 X 36 1/4 X 4 1/2	57 1/4 X 36 1/4 X 2 3/4	5.498	3.302	-	X	
5/0	53 3/4	33 3/4	61 1/4	61 3/4	-	36	21	1	1	65 1/4 X 36 1/4 X 4 1/2	64 1/4 X 36 1/4 X 2 3/4	6.159	3.706	-	X	
6/6	53 3/4	33 3/4	77 1/4	77 3/4	-	40	24	1	1	81 1/4 X 36 1/4 X 4 1/2	80 1/4 X 36 1/4 X 2 3/4	7.670	4.629	-	X	
6/0	-	-	-	-	-	-	-	-	-	-	-	-	-	-	-	
-	-	-	-	-	-	-	-	-	-	-	-	-	-	-	-	

MATERIALS: ALL TUBES CARBON STEEL AND ALUMINUM CASTING

leggett & platt fashion bed

PRODUCT DATA SHEET

STYLE: _____ (BED)
 STYLE: _____ (HDBD)
 DESC. FAIRFIELD BED (FOOTBOARD)

DOMESTIC _____
 IMPORT X

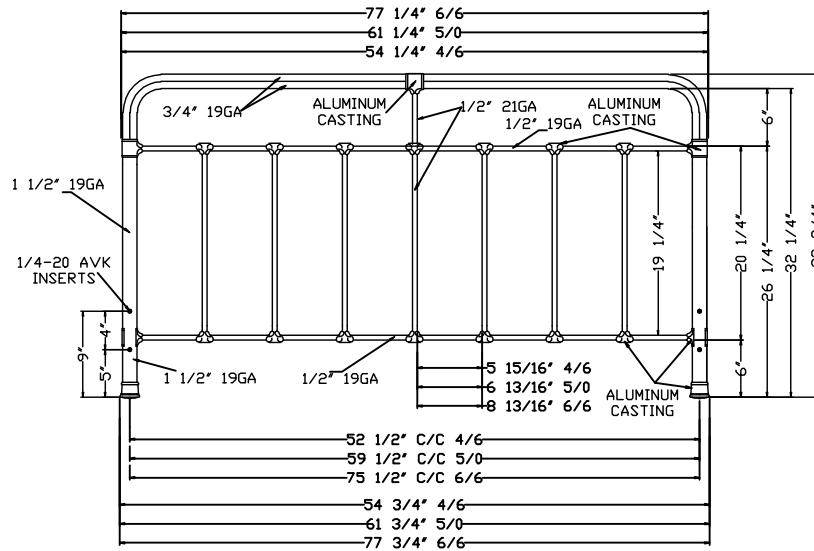
VENDOR INFORMATION:
 LOCATION: TAIWAN
 NAME: JA

HARDWARE NEEDED? DES. _____ SPINDLE COUNT
 Y X ISSUE: D _____ 3/3 _____ 5/0 7
 N _____ DATE: 03-04-13 4/6 7 6/6 7

FINISH(S): DARK ROAST

STEP FINISH(S):

- STEP 1- BLACK POWDER COAT
- STEP 2- PATTERN
- STEP 3- HIGHLIGHT
- STEP 4- LACQUER
- STEP 5- OVEN



#	DESCRIPTION
-	HARDWARE BAG FOR BED #351501
1	(4) 1/4-20 X 2 1/4" COUNTER SUNK ALLEN HEAD SCREW
2	(4) 1/4-20 X 1" FLAT ALLEN HEAD SCREW
3	(4) 1/4-20 NEX NUT
4	(8) 1/4" ID X 5/8" OD FLAT METAL WASHER
5	(1) ALLEN WRECH
-	-
-	-
-	HARDWARE BAG FOR BED #351502
1	(4) 1/4-20 X 2 1/4" COUNTER SUNK ALLEN HEAD SCREW
3	(4) 1/4-20 NEX NUT
4	(4) 1/4" ID X 5/8" OD FLAT METAL WASHER
5	(1) ALLEN WRECH
-	-
-	-
-	-
-	LEG EXTENSION #383902
-	1 1/2" DIA. PLASTIC GLIDE#150950000
-	NOTE: PLASTIC GLIDE PRE-INSTALLED
-	-
-	-
-	-
ISU	DATE REVISION
B	12-27-12 ADDING CARTON INFORMATIO
C	01-31-12 ADDING TWIN BED
D	03-04-13 REMOVE TWIN INFORMATION

USE THIS AS REFERENCE ONLY

SIZE	HEIGHT		WHIDT		DEPTH	WEIGHT (LBS.)		# OF CTNS		CARTON DIM'S			CU FT.		U.P.S.	
	HDBD	FTBD	HDBD	FTBD		BED	PACKED BED	HDBD	BED	HDBD	BED	HEADBOARD	BED	HDBD	Y	N
3/3	-	-	-	-	-	-	-	-	-	-	-	-	-	-	-	-
4/6	53 3/4	33 3/4	54 1/4	54 3/4	-	34	20	1	1	58 1/4 X 36 1/4 X 4 1/2	57 1/4 X 36 1/4 X 2 3/4	5.498	3.302	-	X	
5/0	53 3/4	33 3/4	61 1/4	61 3/4	-	36	21	1	1	65 1/4 X 36 1/4 X 4 1/2	64 1/4 X 36 1/4 X 2 3/4	6.159	3.706	-	X	
6/6	53 3/4	33 3/4	77 1/4	77 3/4	-	40	24	1	1	81 1/4 X 36 1/4 X 4 1/2	80 1/4 X 36 1/4 X 2 3/4	7.670	4.629	-	X	
6/0	-	-	-	-	-	-	-	-	-	-	-	-	-	-	-	
-	-	-	-	-	-	-	-	-	-	-	-	-	-	-	-	

MATERIALS: ALL TUBES CARBON STEEL AND ALUMINUM CASTING