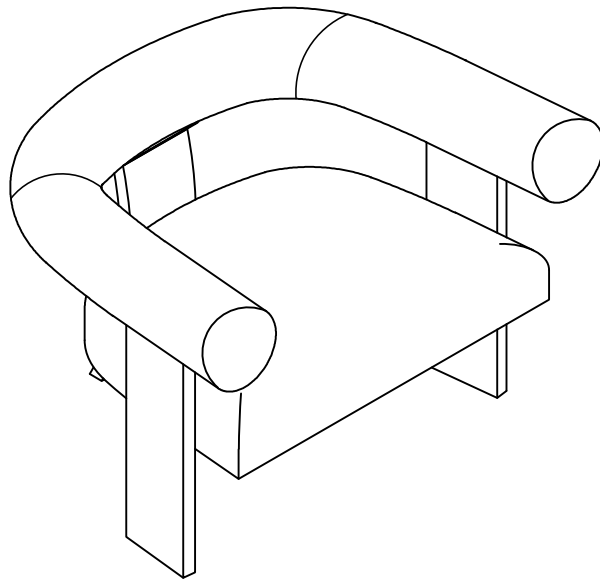
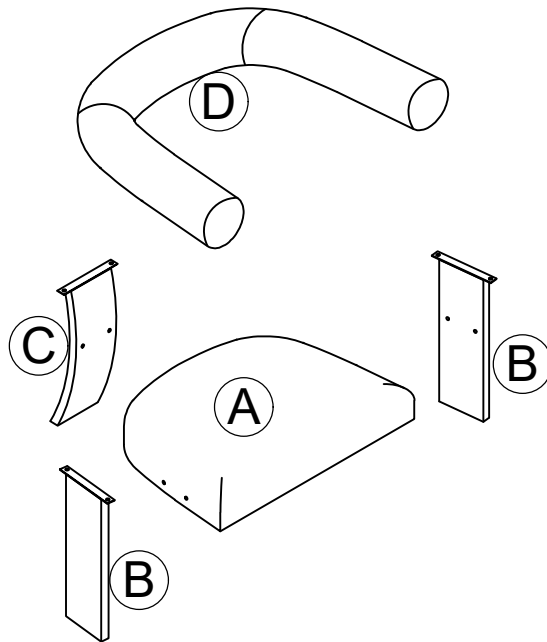


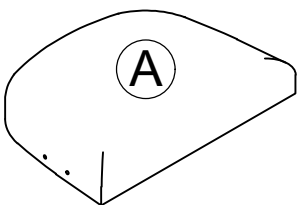
ASSEMBLY UNTRUCTION



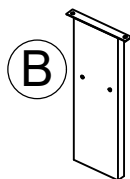
PARTS



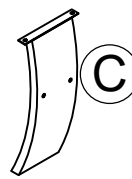
PARTS LIST



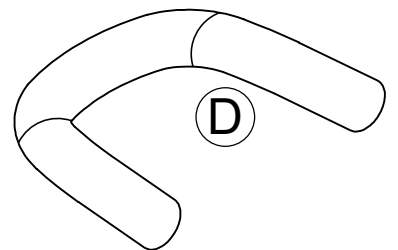
Cushion seat x 1



Front leg x 2



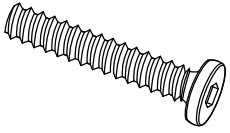
Back leg x 1



Arm x 1

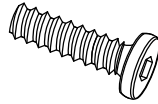
HARDWARE LIST

① x 6



Bolt Ø5/16" x 40mm

② x 6



Bolt Ø5/16" x 25mm

③ x 12



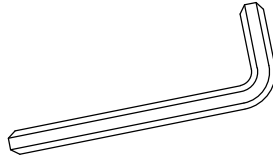
Spring washer Ø5/16"

④ x 12



Flat washer Ø5/16"

⑤ x 1

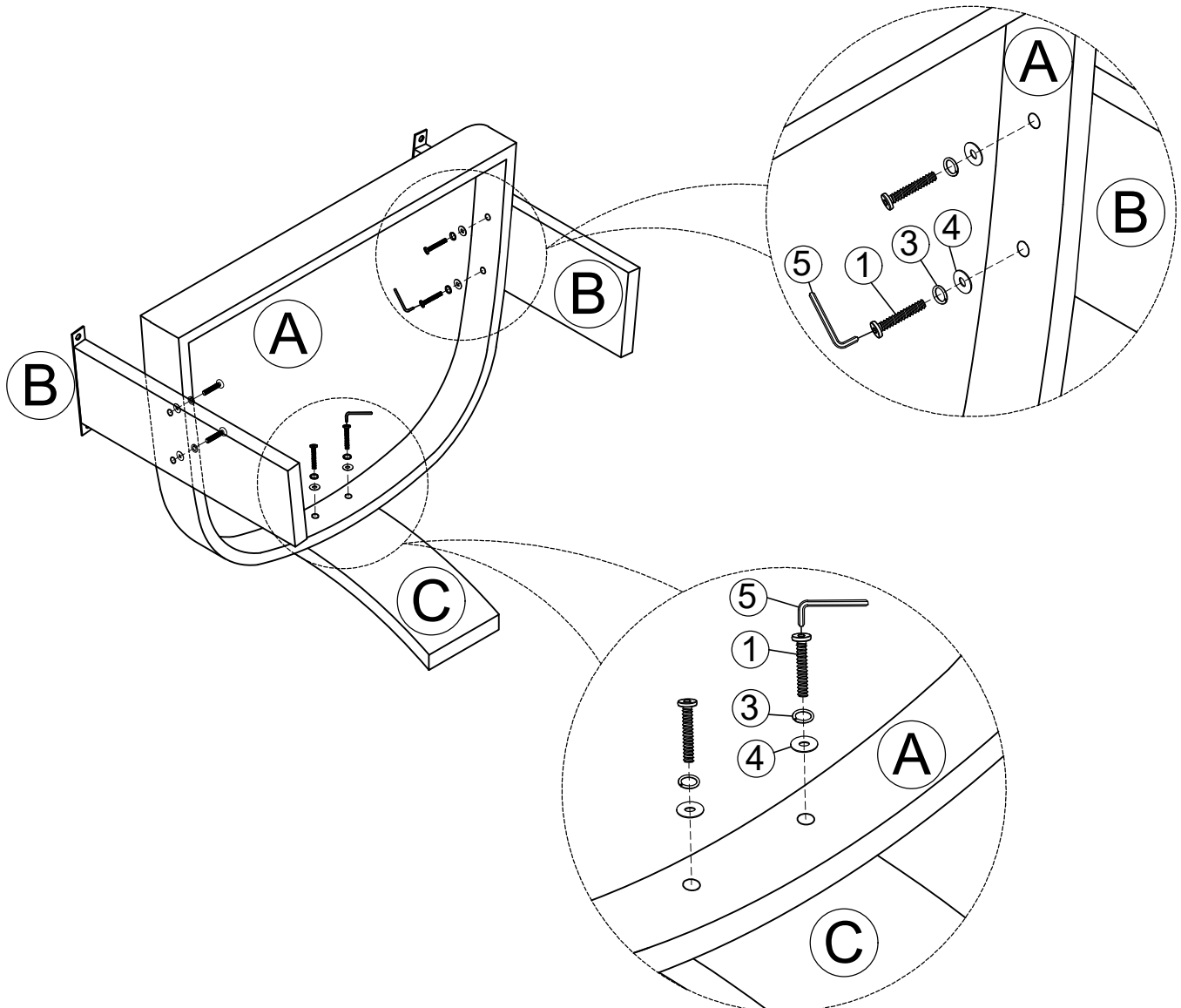


Allenkey

STEP 1:

Place all part on a clean, smooth face.

Attach the front Leg B and back Leg C to the cushion seat A, using the bolt (1) spring washer (3) and flat washer (4) and use the Allenkey (5) to tighten it.



STEP 2:

Place all part on a clean, smooth face.

Attach the Arm to the front Leg B and back leg C using the bolt (2), spring washer (3) Flat washer (4) and use the Allenkey (5) to tighten it.

