

Bedside Crib



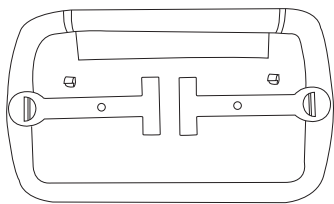
Instruction Manual

INSTRUCTIONS FOR BED SIDE CRIB
IMPORTANT: READ CAREFULLY AND RETAIN FOR
FUTURE REFERENCE

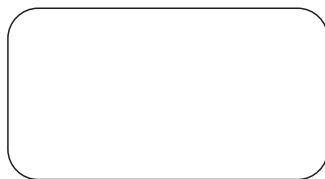


1. With convenient device to fix the crib next to the parents' bed and get close to parents
2. Easy for parents to feed or take care of their baby and can be used as an independent crib
3. One side with breathable mesh fabric help air circulation
4. Height adjustable in 6 position between 43-57 cm can match to different height of the bed
5. Wheels included for easy move and special feet with antis kid also apply to bed with drawer
6. Reclinable to prevent baby vomiting milk
7. With steel frame, easily folded and fabric easily detached for cleaning
8. With high elastic sponge mattress, well air permeability, more suitable for newborn babies

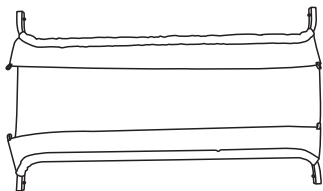
COMPONENTS



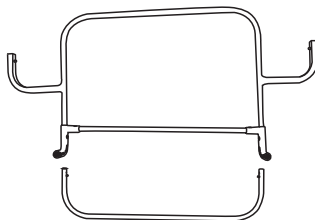
crib body



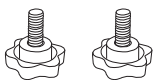
mattress



storage basket



steel frame



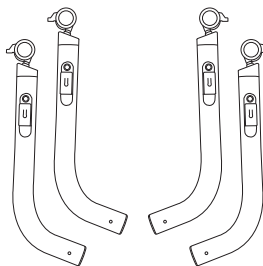
screw x 2



cross-bar



fixing strap

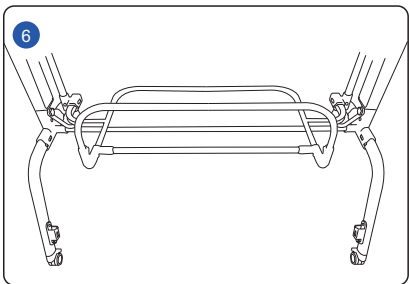
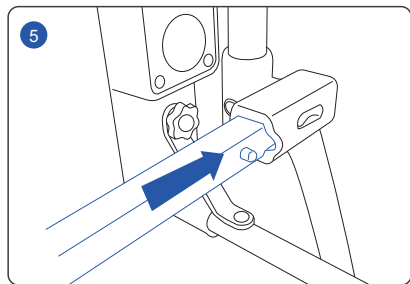
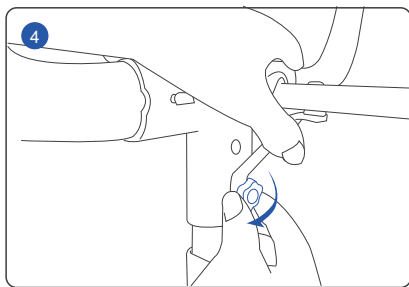
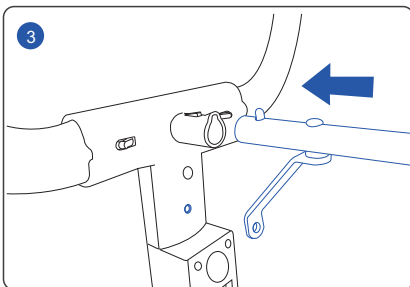
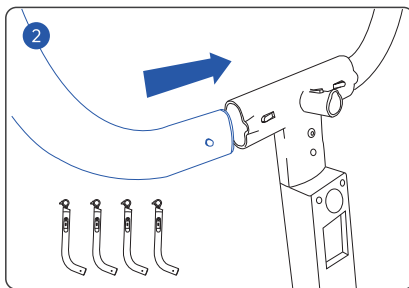
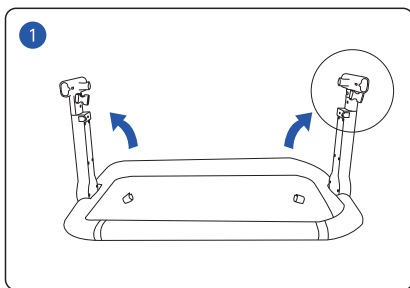


legs x 4

Instruction for Assembly

Crib Frame Installation

1. Take out the crib body and spread out the legs on both sides.
2. Insert the 4 legs into the crib body until hearing a clear “click” sound, then the legs installation finished.
3. As Figure 3 shown, insert the cross bar into both sides of the crib until hearing a clear “click” sound, then fix the screws.
4. Turn the crib over, assemble the support frame and insert it into both sides of the crib until hearing a clear “click” sound as shown in Figure 5 and Figure 6.

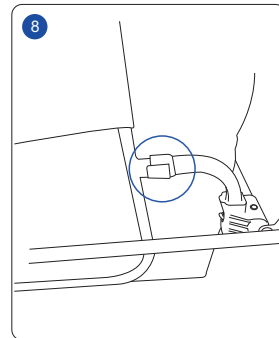
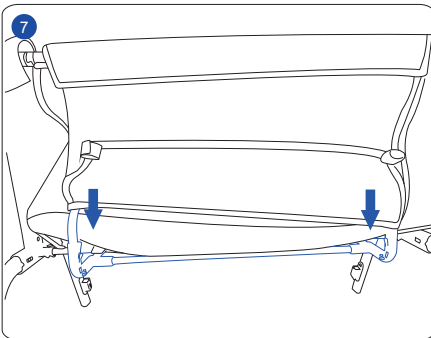
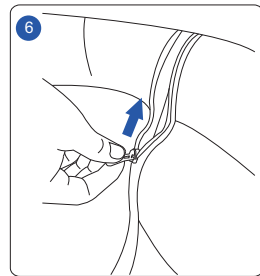
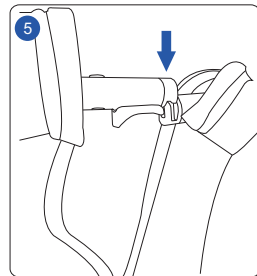
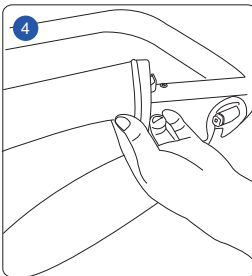
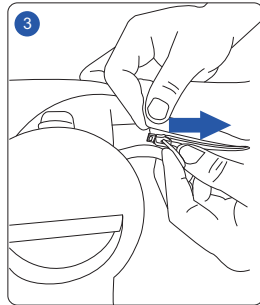
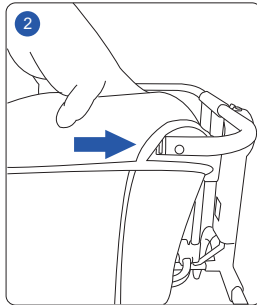
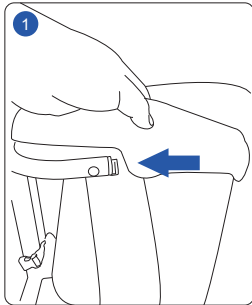


Instruction for Assembly

Crib Pocket Installation

Lock the cradle swing button, and put the textile part on pocket frame, then pull the zipper.

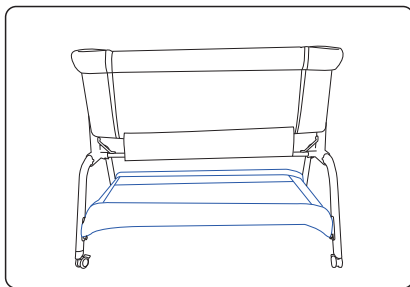
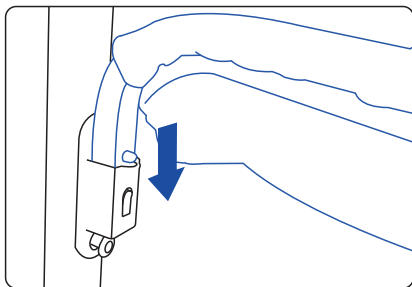
Install the cross-bar and fix up the bottom hook&loop fasteners, then the crib pocket installation finished.



Instruction for Assembly

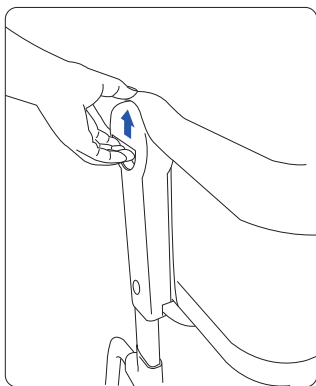
Storage Basket Installation

Put the storage basket into 4 legs, until hearing a clear “click” sound, then fix up the elastic, and the storage basket installation finished.



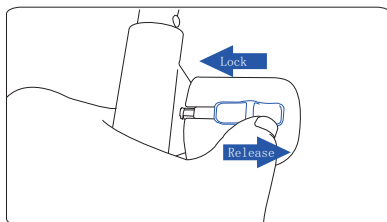
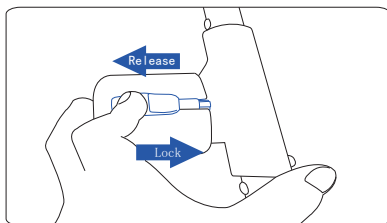
Height Adjustment

Lift up the both side button and select the suitable height.



Swing the Cradle

Lock the crib, and release the cradle button until hearing a clear “click” sound, then the cradle can be swung by hand.

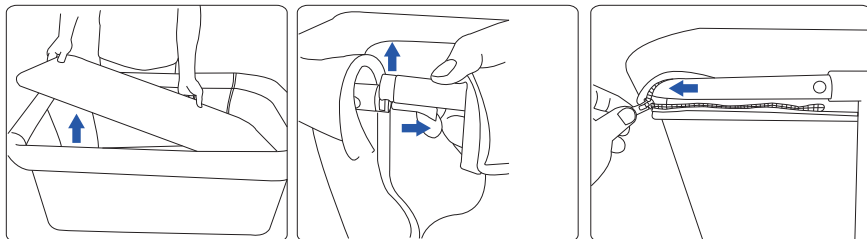


Instruction for Disassembly

Crib Pocket Disassembly

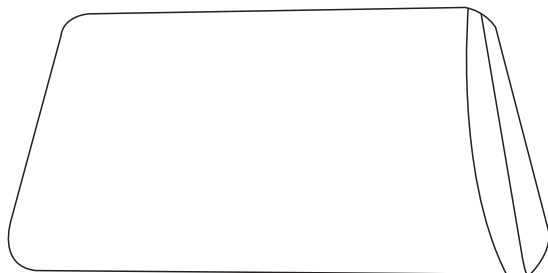
Take the mattress out, and remove the cross-bar, then release the bottom hook&loop fasteners.

Unzip the crib pocket zipper and take the whole textile part out.



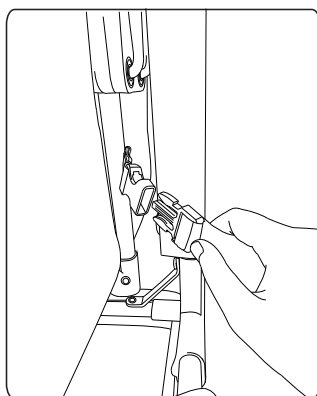
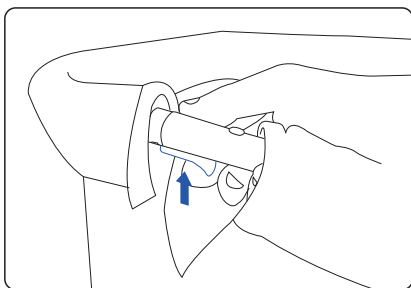
Mattress Disassembly

WARNING! Below instruction way for detachable mattress only. Unzip the zipper, and take out the textile part. When put on the textile part, please install the foam part firstly, then install the fiber board.

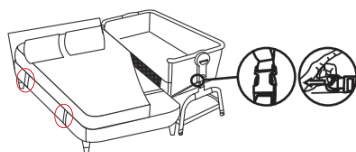


Instruction for fixing to parent's bed

1. Open the flap cover and zipper completely. Release the plastic joint from the tubing on both sides and lower the drop side of crib and fit it to the base of the crib main body using elastic snap on both sides.
WARNING! Use the crib with the tube lowered in co-sleeping mode only.
2. Move the crib close to the parents' bed and check the height of the crib compared with the mattress of the bed.
WARNING! The mattress of parent's bed shall be aligned to or over the height of the drop side in the lowest position.
WARNING! In co-sleeping mode the 2 legs of the crib should always be adjusted to the same height.



3. Use the pair of straps provided to fix the crib to the parents' bed. Fix the buckles underneath the crib on both sides, Next, fix the straps around the structure / slats of the parent's bed, from the bottom towards the top and fasten the buckles below the crib to finish.
4. To secure the crib to the parents' bed, pull the straps once again to make sure the crib is properly and firmly secured parents' bed.



Care and Maintenance

Thank you for purchasing this crib!

- This company reserves the right to further improve the product, please receive the actual product as standard.
- The pictures in this manual are only schematic drawings and may differ from actual cribs.

Daily maintain

- Often check your crib for loose screws, parts aging, material and sewing thread breakage. Please repair or replace parts in time if needed.
- Do not place heavy objects in the crib.
- Prohibit using other non-original parts and accessories.

Cloth cleaning

- For cloth dust and general stains, only need domestic soap or neutral detergent in a cleaning device to brush stains. Do not use bleach.
- It is advised to use a damp cloth for scrubbing.
- In order to avoid damage to the surface of the cloth, it is not possible to scrub the cloth cover too hard.
- Put the washed cloth cover in a dry and ventilated place. Do not expose it to sunlight.

Crib frame cleaning

- Use a damp cloth and mild detergent to scrub the frame.
- Do not use corrosive detergents.



WARNING

1. The Retractable Feet Must Be Used ONLY IN Bedside Sleeper Mode.
2. Dropping Down The Rail Bar Must Be Used ONLY IN Bedside Sleeper Mode.
3. The attachment system must always be used in bedside sleeper mode.

- ! WARNING** Do not use this product without reading the instructions for use first.
- ! WARNING** Stop using the product as soon as the child can sit or kneel or pull itself up;
- ! WARNING** Placing additional items in the product may cause suffocation;
- ! WARNING** Do not place the product close to another product, which could present a danger of suffocation or strangulation, e.g. strings, blind/curtain cords, etc.
- ! WARNING** Do not use more than one mattress in the product.
- ! WARNING** The product should be placed on a horizontal floor.
- ! WARNING** Young children should not be allowed to play unsupervised in the vicinity of the crib
- ! WARNING** All assembly fittings should always be tightened properly and that care should be taken that no screws are loose, because a child could trap parts of the body or clothing (e.g. Strings, necklaces, ribbons for babies' dummies, etc.), which would pose a risk of strangulation.
- ! WARNING** The maximum thickness of the mattress as well as information regarding the mattress maximum thickness marking.
- ! WARNING** Be aware of the risk of burning cigarettes, open fires and other sources of strong heat, such as electric bar fires, gas fires, etc. In the near vicinity of the crib
- ! WARNING** Height from the floor of the adult's bed for which the bedside sleeper is suitable.
- ! WARNING** Concerning the attachment system shall be provided and the user shall not use other attachment system;
- ! WARNING** There shall never be a gap between the lower side of the bedside sleeper and the mattress of the adult bed.
- ! WARNING** If there is any gap between the bedside sleeper and the adult bed. DO NOT use product.

⚠ WARNING To avoid the risk of your child being strangled the attachment system to the adult's bed shall always be kept away from and out of the crib.

⚠ WARNING

Failure to follow these warnings and instructions could result in serious injury or death. Read all instructions before assembling and using the product.

FALL HAZARD To help prevent falls, do not use this product when infant begins to push up on hands and knees or has reached manufacturer's recommended maximum weight of 19.8lbs (9KG), whichever comes first.

⚠ WARNING

SUFFOCATION HAZARD

Infants have suffocate:

In gaps between an extra pad and side of the bassinet/cribble
On soft bedding

Use only the pad provided by manufacturer. NEVER add a pillow, comforter or another mattress for padding

⚠ WARNING If a sheet is used with the pad, use only the one provided by the bassinet or cradle manufacturer or one specifically designed to fit the dimension of the bassinet or cradle mattress. To reduce the risk of SIDS, pediatricians recommend healthy infants be placed on their backs to sleep, unless otherwise advised by your physician.

⚠ WARNING Strings can cause strangulation! Do not place items with a string around a child's neck, such as hood strings or pacifier cords. Do not suspend strings over a bassinet or cradle or attach strings to toys.

⚠ WARNING DO NOT use bedside sleeper if any parts are missing, damaged, or broken. Contact us for replacement parts and instructional literature if needed. DO NOT substitute parts.

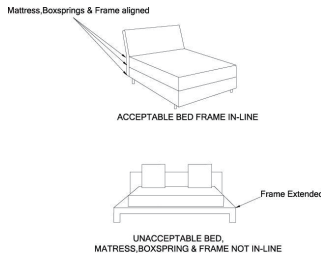
⚠ WARNING Always read and follow assembly instructions for each product use mode (bedside sleeper & bassinet).

⚠ WARNING Assemble product according to manufacturer's instructions for ANY use mode - bedside sleeper as well as the bassinet modes.

⚠ WARNING This bedside sleeper is designed for use only with adult beds that are between 22 and 26-3/4 inches(558.8mm to 679.5mm) from floor to top of adult mattress.

⚠ WARNING The types of adult beds(BELOW FIG.) with which the bedside sleeper CAN OR CANNOT be used.

⚠ WARNING The bedside sleepers shall never be used in an inclined position; To prevent a suffocation hazard from entrapment, the bedside sleeper shall be properly secured to the adult bed using the attachment system; Check the tightness of the attachment system before each use by pulling the bedside sleeper in a direction away from adult bed.



⚠ WARNING A bedside sleeper is designed to provide a sleeping area for an infant until he or she begins to push up on hands and knees or approximately 5 months of age. Move your child to another sleeping product when your child reaches this stage.

⚠ WARNING Entrapment Hazard

To prevent death from entrapment, bedside sleeper must be properly secured to adult bed using the attachment system.

There must be no more than 1/2 in.(13 mm) gap between bedside sleeper and adult bed.

Check tightness before each use by pulling bedside sleeper in a direction away from adult bed. If gap exceeds 1/2 in.(13 mm), DO NOT use product.

Do not fill the gap with pillows, blankets or other items that are suffocation hazards.

⚠ WARNING Always use ALL required parts for each use mode. Check instruction manual for a list of required parts. Periodically check product for loose, damaged, or missing parts.

⚠ WARNING The attachment system must always be used in bedside sleeper mode.

⚠ WARNING To avoid death from the infant's neck being caught on the top rail on the side that is next to the adult bed, the top rail must be no higher than the adult bed mattress.

⚠ WARNING To avoid death from the infant's neck being caught on the top rail on the side that is next to the adult bed, the lowered portion of the top rail must be no higher than the adult bed mattress.

⚠ WARNING Not intended for carrying baby. NEVER use for a baby who is able to sit upright unassisted.

⚠ WARNING Never leave the child unattended.

⚠ WARNING NEVER place a child under 6.lbs.(3kgs) or over 19.8 lbs.(9kgs) in the bassinet.

⚠ WARNING NEVER move while child is in bassinet.

⚠ WARNING DO NOT use toy bar as a handle. Don't hang anything on toy bar except provided toys.

⚠ WARNING Never place the bassinet on countertop, table, on or near steps or on other elevated surfaces.

⚠ WARNING **ALWAYS use on the flat floor.**

⚠ WARNING Strings can cause strangulation! Do not place items with a string around a child's neck, such as hood strings or pacifier cords. Do not suspend strings over a bassinet or cradle or attach strings to toys.

⚠ WARNING

from birth to 5 months

This toy is not intended to be "mouthed" by the baby and should be positioned clearly out of reach of the baby's face and mouth.

The drop side of the crib should never be lowered with the toy in place and the baby left unattended.

Always attach all provided fasteners (strings, straps, clamps, etc.) tightly to a crib or playpen according to the instructions. Check frequently.

Do not add additional strings or straps to attach to a crib or playpen.

Do not mix old and new batteries.

Do not mix alkaline, standard (carbon-zinc), or rechargeable batteries.

Care and cleaning

Mattress: Remove from mattress foam, Soft Machine wash or hand wash with cold water, gentle cycle.

No bleach, Tumble dry, Low heat.

Toy bar and toys: Wipe clean with a damp cloth and mild soap. Air dry.

Don't immerse in water.

Frame: Wipe the metal frame with soft, clean cloth and mild soap.

Keep instructions for future use

WARNING

Failure to follow these warnings and the instructions could result in death or serious injury.

SUFFOCATION HAZARD

Babies have suffocated

- On pillows, comforters and extra padding.
- In gaps between a wrong size mattress, or extra padding and product sides.
- **NEVER** add soft bedding or padding.
- Use **ONLY** mattress provided by manufacturer.
- Always place baby on back to sleep to reduce the risk of SIDS and suffocation.
- If a sheet is used with the pad, use only the one provided by the product manufacturer or one specifically designed to fit the dimension of the product mattress.

FALL HAZARD: To help prevent falls,

- Do not use this product when the infant begins to push up on hands and knees or has reached manufacturer's recommended maximum weight of 19.8 lbs (9KG), whichever comes first.

- Strings can cause strangulation! Do not place items with a string around a child's neck, such as hood strings or pacifier cords. Do not suspend strings over a product or attach strings to toys.
- Do not use if any part of the bassinet/cribble is broken, torn or missing.