

MID CENTURY LOUNGE CHAIR

INSTRUCTION MANUAL



HIGH-QUALITY STYLISH VERSATILE

TIPS & PREP

Your new Lounge chair is designed for easy assembly right at home with the included instructions. Before we get started, here are some essential tips and preparation steps to ensure the assembly process goes smoothly.

Get a buddy or family member

While the assembly doesn't require any tools, it does involve lifting and aligning various parts. To simplify the process, we recommend having at least two people present throughout the entire assembly.

Left or right matters!

During assembly, we will refer to the Left and Right Arms and their movements, based on your perspective when standing in front of the lounge chair.

Don't overlook the glossary!

We've included a glossary with these instructions to help you identify every part and piece of hardware. If you run into any issues, consult the glossary to ensure you're using the right components.

Unbox and check your hardware

Open the lounge chair package up, lay out each piece, and double-check with the checklist to make sure you have everything you need. If anything's missing, reach out to customer service before moving forward.

Have your scissors handy!

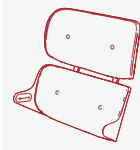




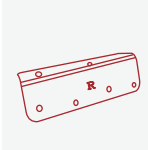
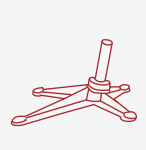
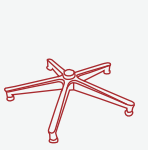

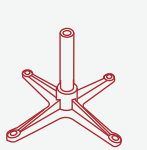
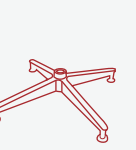
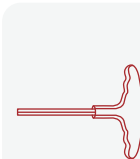
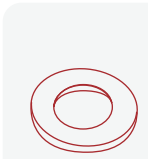
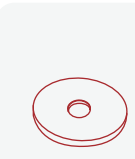
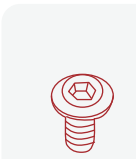
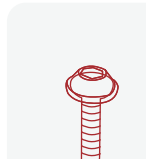
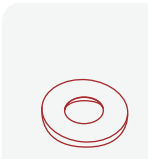
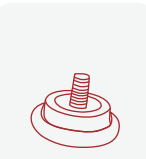
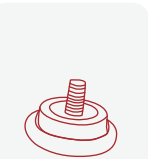
Make sure you have scissors nearby. The lounge chair components are securely packaged, and some parts may be in protective wrap. Carefully open them to prevent any damage or injury while unpacking.

Clear the space!

We recommend assembling your lounge chair in a spacious, clutter-free area, away from pets and children. Lay down a cloth or sheet to protect your table components from dust and debris during assembly.

PRODUCT LIST

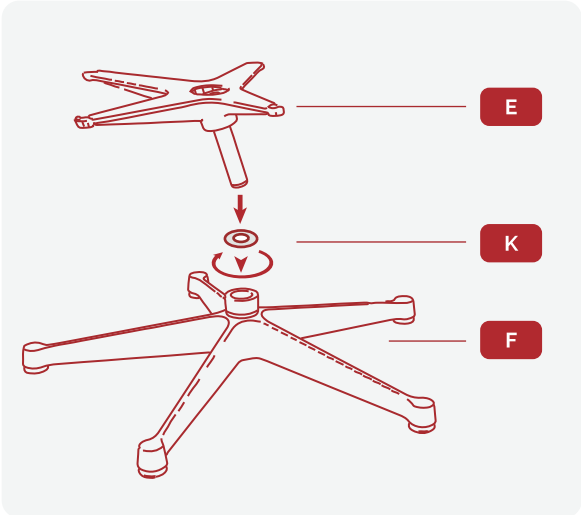
Here's a complete parts list for your lounge chair. Please handle carefully to avoid any bumps or scratches during assembly. Confirm that the package has arrived and use this list to check all parts.

 A Chair Back Rest × 1	 B Chair Seat × 1	 C1 Left Chair Arm Rest × 1	 C2 Right Chair Arm Rest × 1	 D1 Left Connecting Bracket × 1	 D2 Right Connecting Bracket × 1	 E Chair Base × 1	 F Five Star Metal Leg × 1	 G Ottoman Cushion × 1	 H Ottoman Base × 1	 I Four Star Metal Leg × 1
 J Hexagon Wrench × 1	 K Transparent Gasket × 1	 L Chair Washer Φ 40*2 × 1	 M Hexagonal Screw M8*16 × 9	 N Hexagonal Screw M6*25 × 12	 O Rubber Pad Φ16*1,5 × 9	 P Spare part: Four Star Foot Nail × 1	 Q Spare part: Five Star Foot Nail × 1			

COFFEE TABLE ASSEMBLY INSTRUCTIONS

STEPS

1

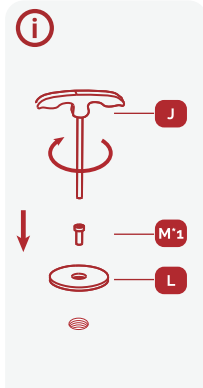


Slip the central hole of the five - star metal leg (F) over the transparent gasket (K), then align it with the rod of the chair base (E), press down and rotate until it is tightened.

2

Put the five star metal leg upside down, then fix the rod with screw (M) and washer (L) provided.

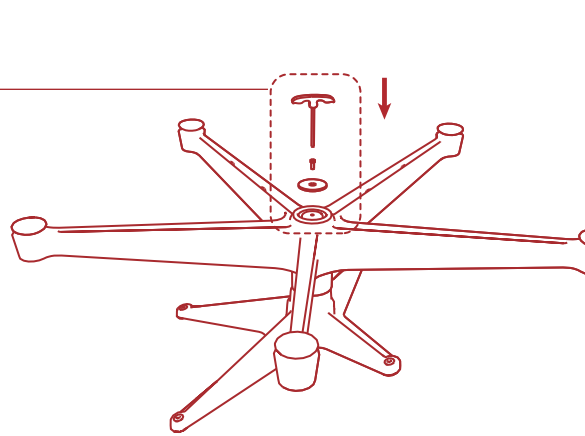
i



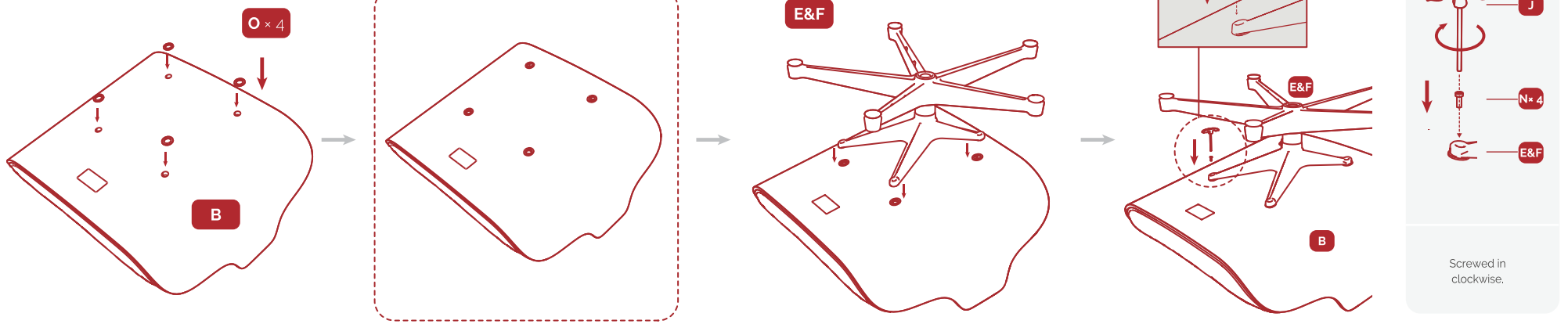
M*1

L

Screwed in clockwise.



3

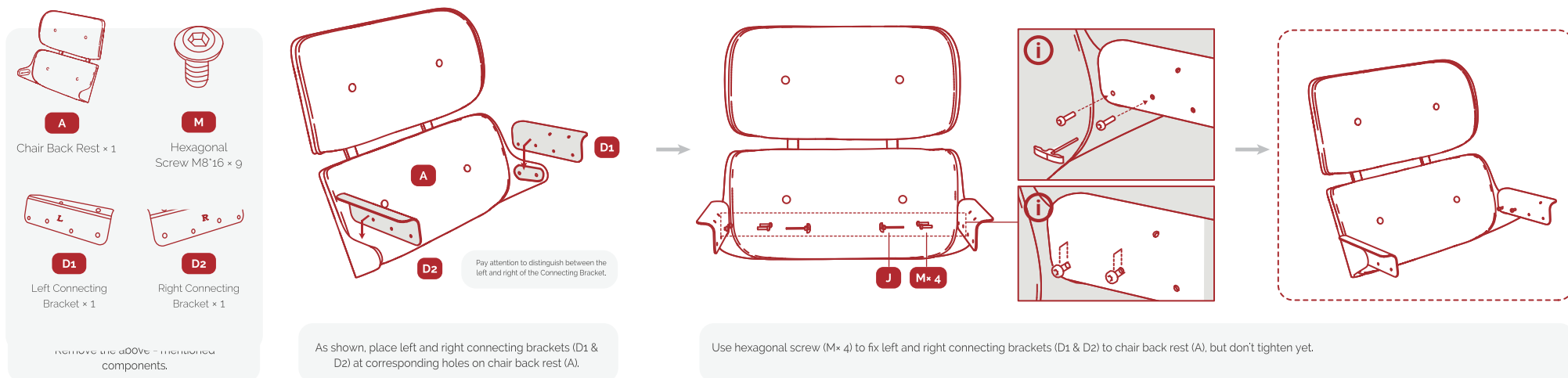


Flip the chair seat (B) over and lay it flat on the ground. Then, place the rubber pad (O x 4) on the corresponding holes on its back.

Remove the assembled chair legs (E & F) and place on the rubber pad, aligning the holes.

Take out hexagonal screws (N x 4). Fix chair base (E & F) and chair seat (B) with screws.

4



Chair Back Rest x 1

Hexagonal Screw M8*16 x 9

Left Connecting Bracket x 1

Right Connecting Bracket x 1

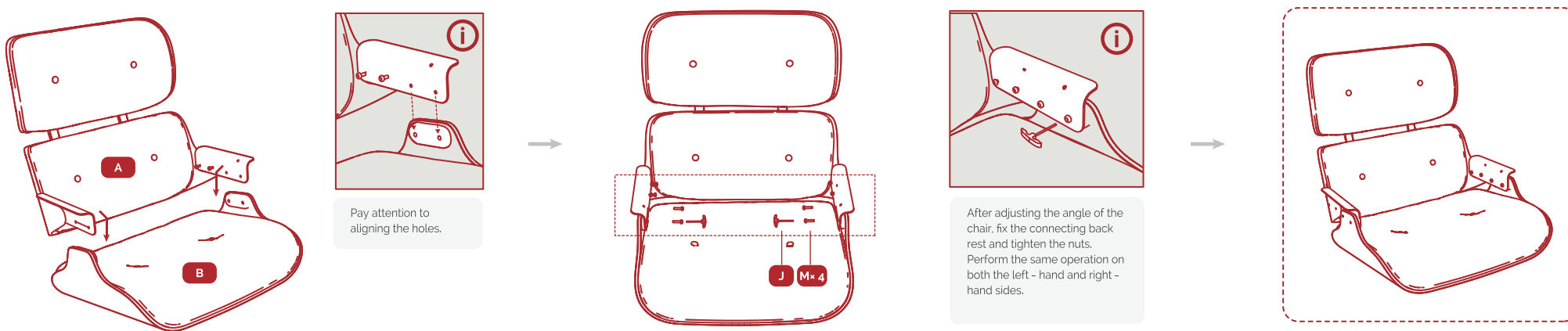
Remove the above - mentioned components.

As shown, place left and right connecting brackets (D1 & D2) at corresponding holes on chair back rest (A).

Use hexagonal screw (M x 4) to fix left and right connecting brackets (D1 & D2) to chair back rest (A), but don't tighten yet.

5

Install the chair back rest (A) and seat (B) with the connecting bracket (D1 & D2).

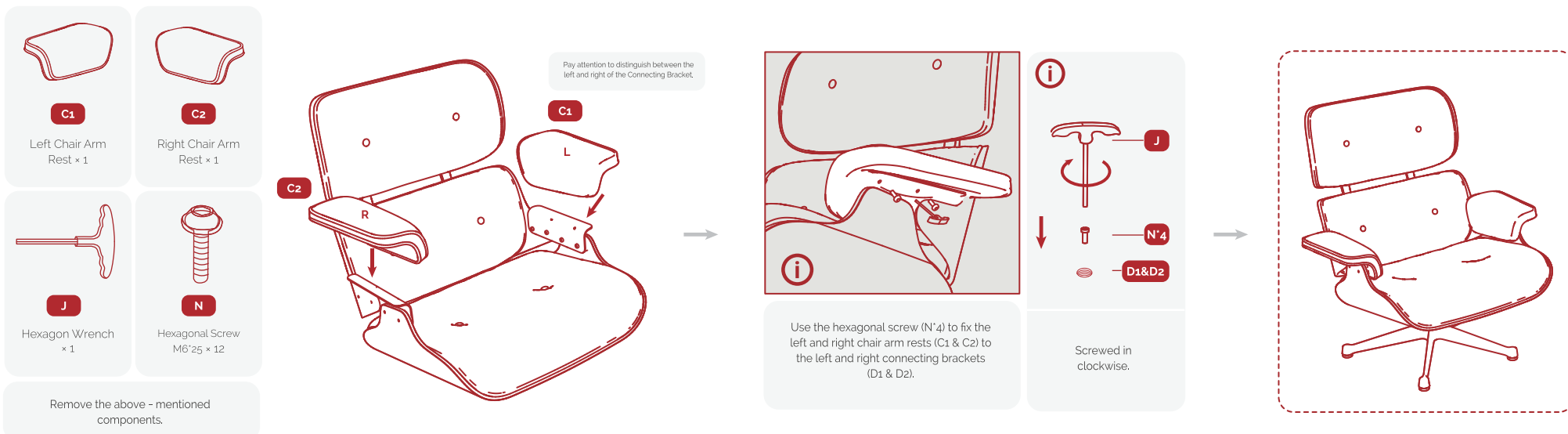


Pay attention to aligning the holes.

After adjusting the angle of the chair, fix the connecting back rest and tighten the nuts. Perform the same operation on both the left - hand and right - hand sides.

6

Install the left and right chair arm rests (C1 & C2)



Left Chair Arm Rest x 1

Right Chair Arm Rest x 1

Hexagon Wrench x 1

Hexagonal Screw M6*25 x 12

Remove the above - mentioned components.

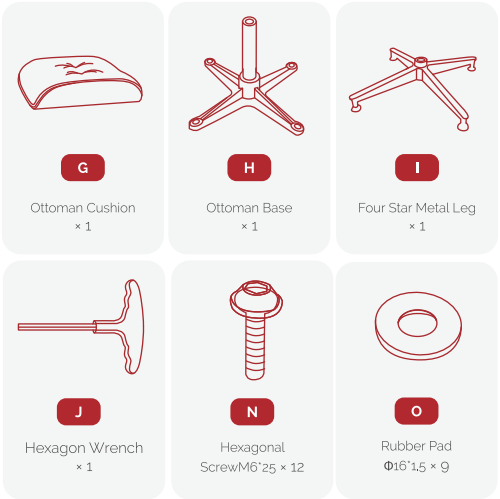
Pay attention to distinguish between the left and right of the Connecting Bracket.

Use the hexagonal screw (N' x 4) to fix the left and right chair arm rests (C1 & C2) to the left and right connecting brackets (D1 & D2).

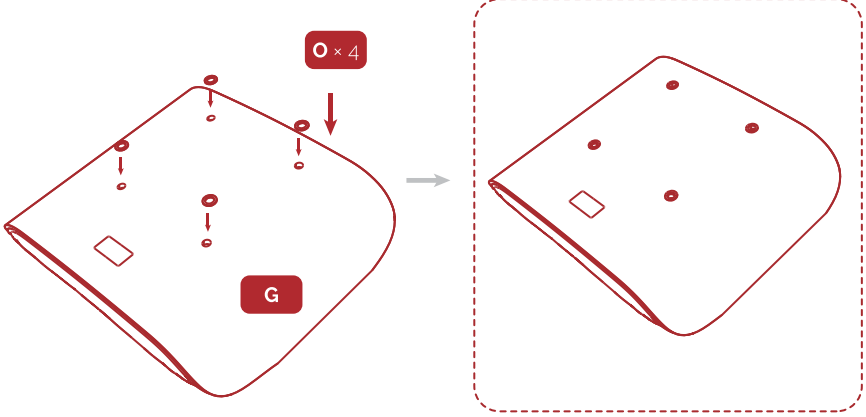
Screwed in clockwise.

7

Install the Ottoman.

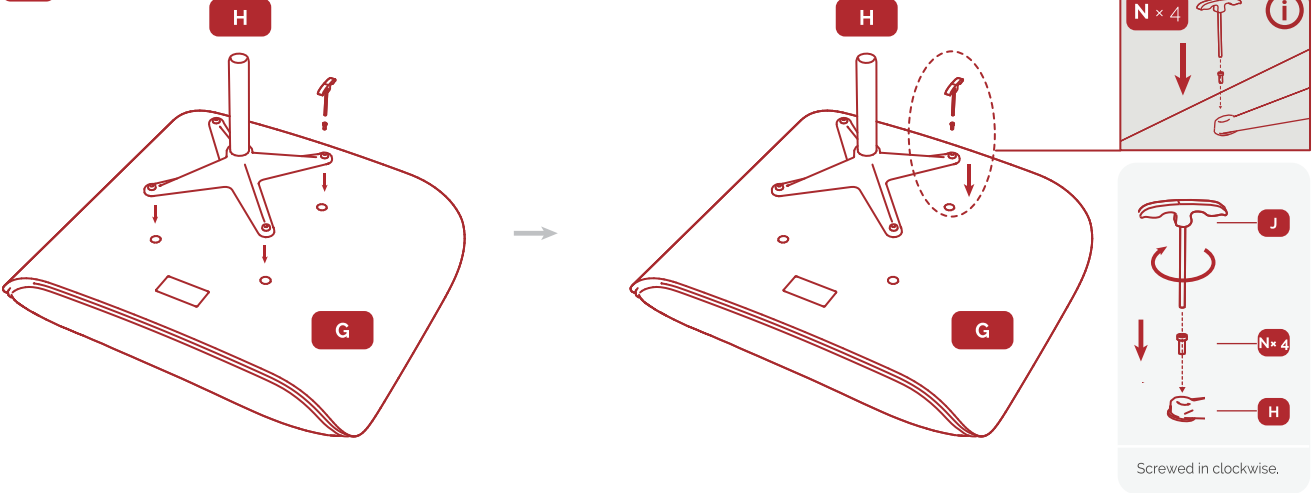


Remove the above - mentioned components.



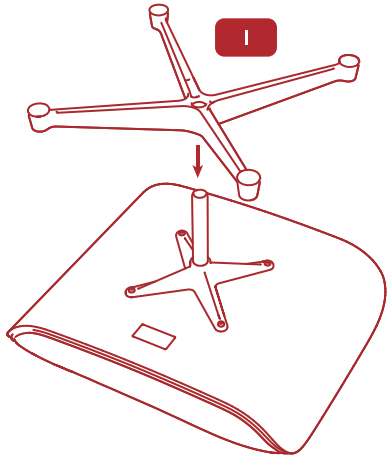
Flip the ottoman cushion (G) over and lay it flat on the ground. Then, place the rubber pad (O× 4) on the corresponding holes on its back.

8



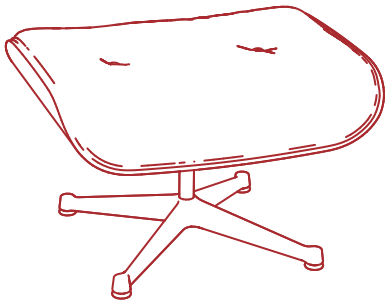
Remove the ottoman base (H) and place on the rubber pad, aligning the holes.

Take out hexagonal screws(N× 4). Fix the ottoman cushion (G) and ottoman base (H) with screws(N).



Insert the four - star leg(I) down into the rod till tighten.

9



10

Complete the installation.



Z

