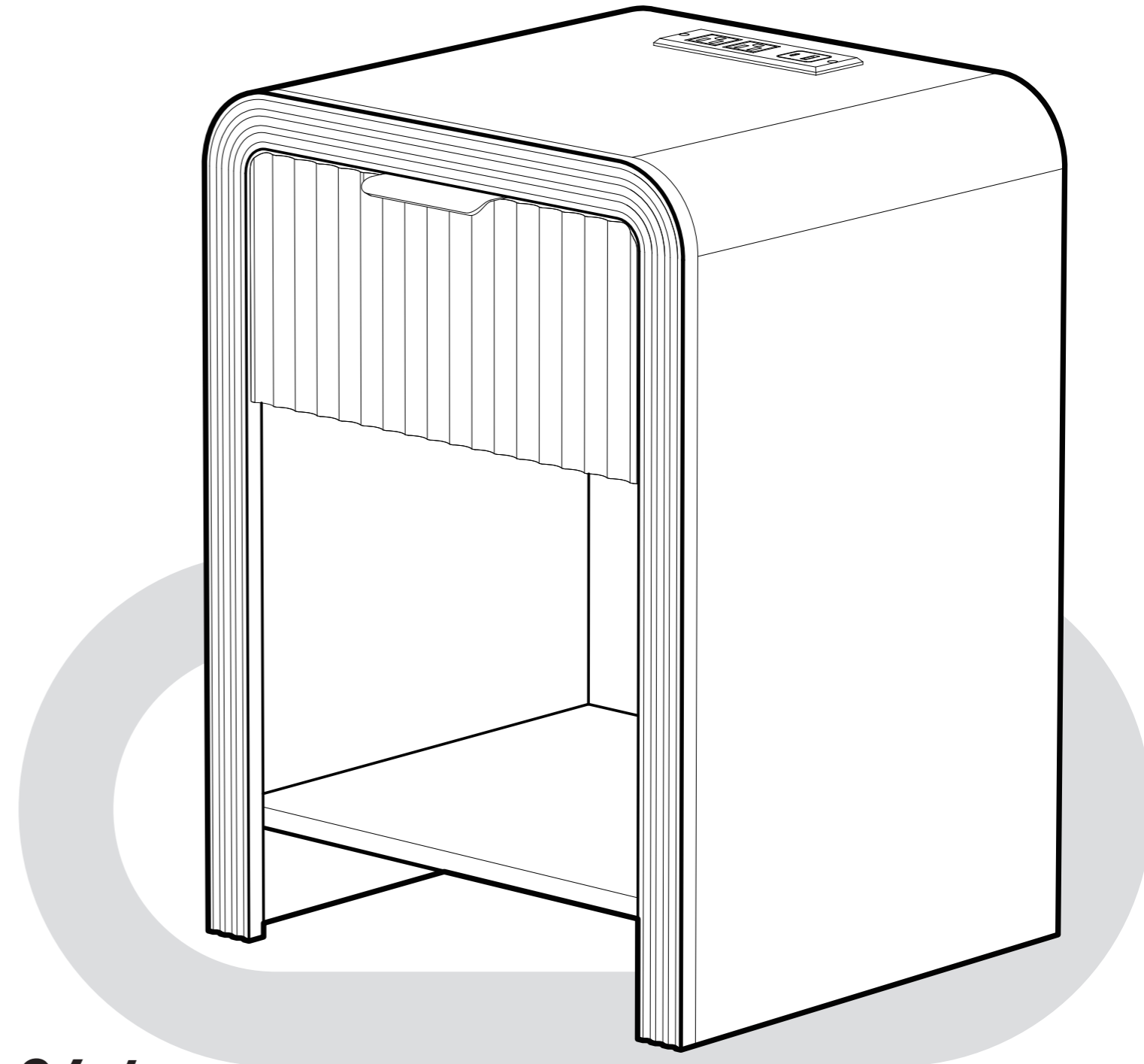


# Get in Touch?

✉ [support@bsservicehome.com](mailto:support@bsservicehome.com)

# ASSEMBLY INSTRUCTIONS



**Manufacturer:** Shenzhen Guiyang Network Technology Co., Ltd  
**Address:** 1404K3, East Block, Shengtang Commercial Building, Futian District, Shenzhen, China  
Made in China Rev\_1.0\_EN

**24/7**  
Service

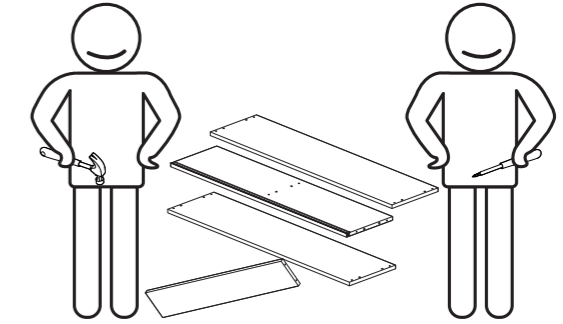
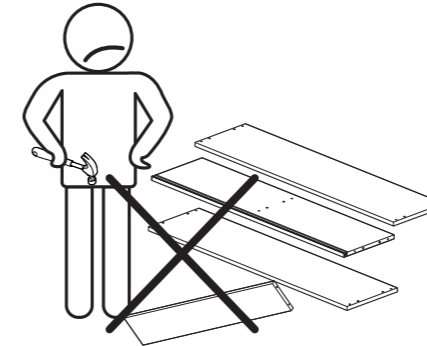
Any other questions, contact us via **email: [support@bsservicehome.com](mailto:support@bsservicehome.com)**. We provide 24/7 online service with dedicated one-on-one expert support for all your inquiries.



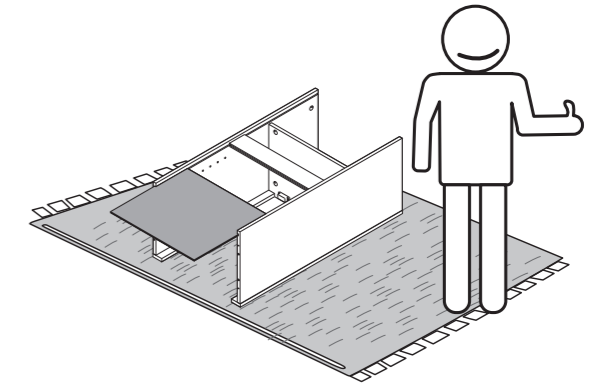
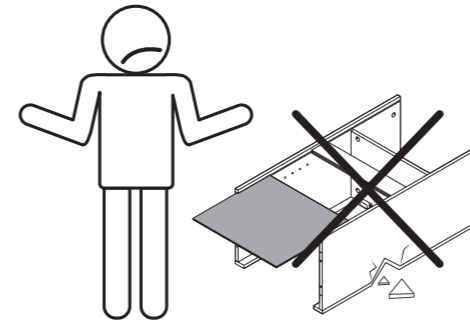
## WARNING

**Children have died from furniture tip-over. To reduce the risk of furniture tip-over:**

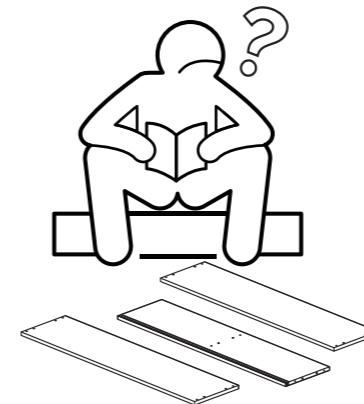
- NEVER allow children to stand, climb or hang on drawers, doors, or shelves.
- NEVER open more than one drawer at a time.
- Place heaviest items in the lowest drawer.
- Read and follow all assembly instructions.



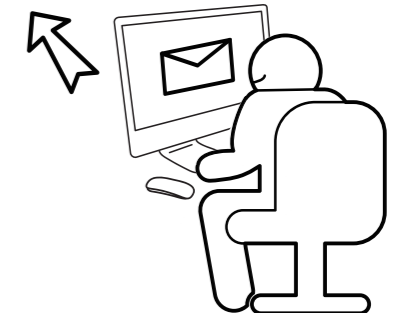
**We recommend at least 2 people for the assembly.**



**To prevent any damage during assembly, place a mat under the pieces.**



**[support@bsservicehome.com](mailto:support@bsservicehome.com)**

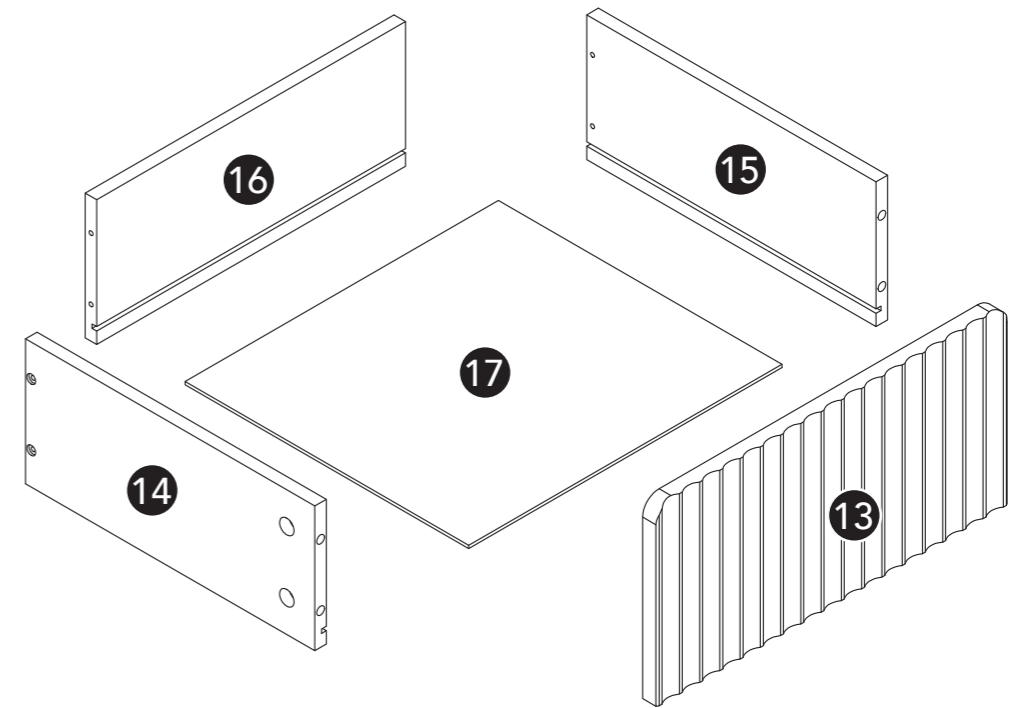
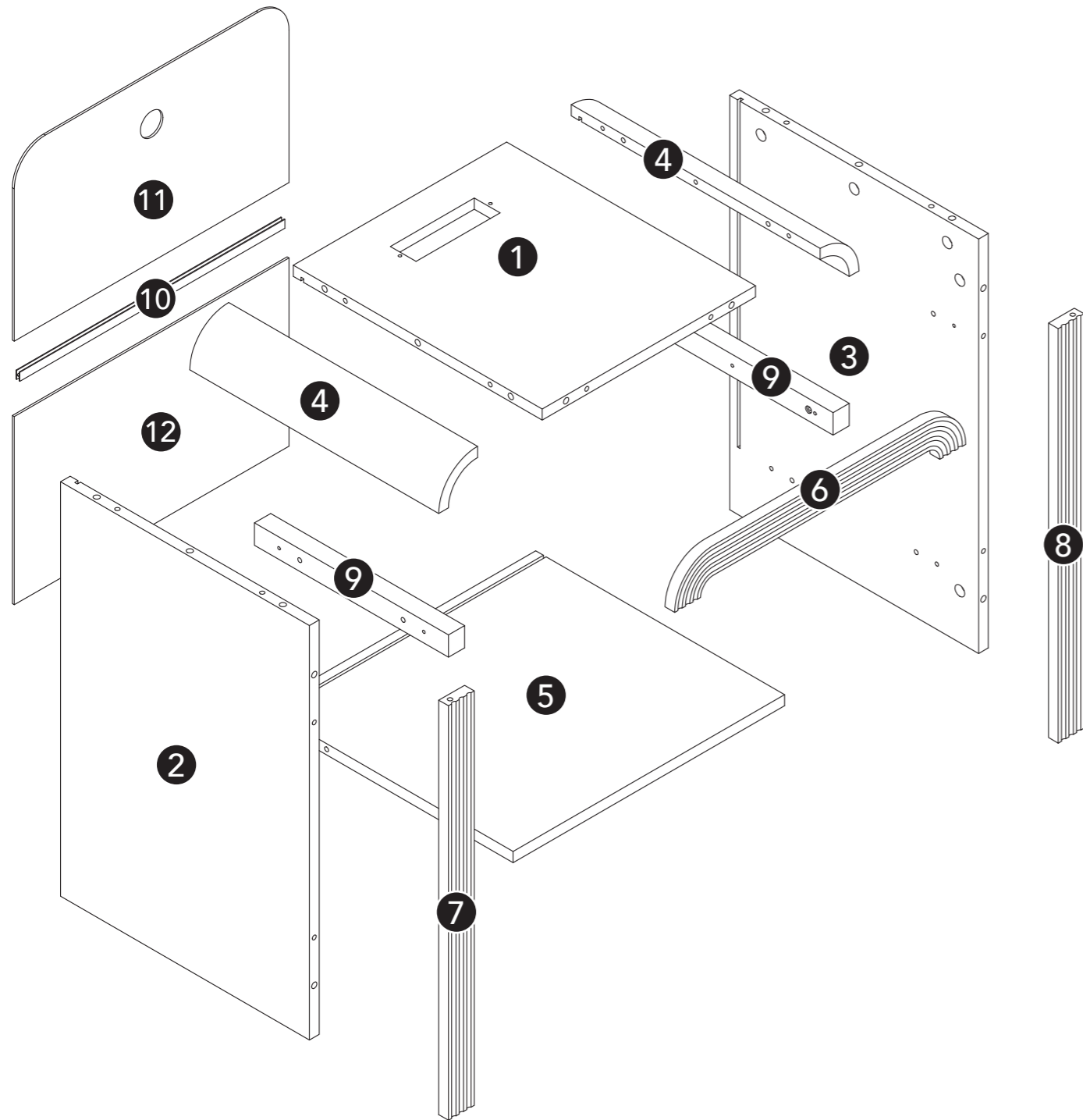


**Any questions concerning assembly, contact us  
via email: [support@bsservicehome.com](mailto:support@bsservicehome.com).**

# PARTS DIAGRAM



Check if all parts and hardware are included. Contact us via email: [support@bsservicehome.com](mailto:support@bsservicehome.com) if there is any part missing or damaged.

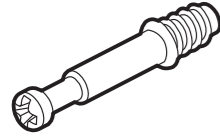


# HARDWARES

# SPARE PARTS



The spare parts are the additional parts provided in case of missing or damaged ones. Keep the spare parts and tools for future use.



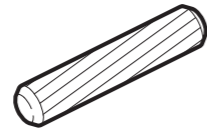
Ø6x35mm

**A x 26**



Ø15x10mm

**B x 26**



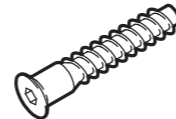
Ø6x30mm

**C x 24**



Ø3.5x12mm

**D x 18**



Ø7x30mm

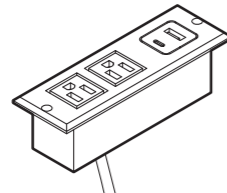
**E x 4**



**F x 2**



**G x 4**



**H x 1**



Ø3x12mm

**I x 2**

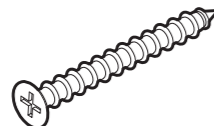


**J x 8**



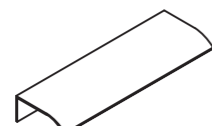
Ø3x16mm

**K x 8**

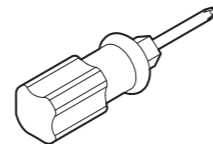


Ø4x30mm

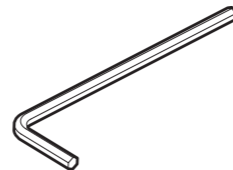
**L x 4**



**M x 1**



**N x 1**



**O x 1**



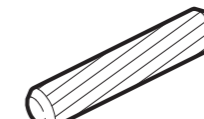
M6x35mm

**A x 2**



M15x10mm

**B x 2**



Ø6x30mm

**C x 2**



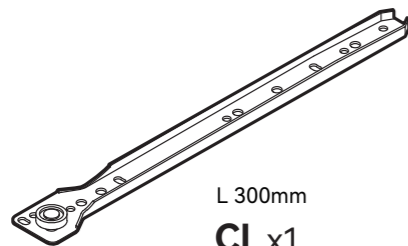
Ø3.5x12mm

**D x 1**



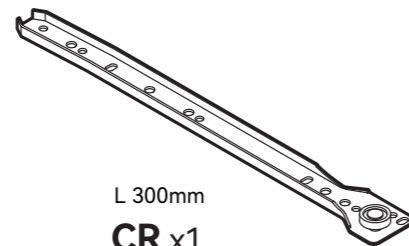
Ø3x16mm

**K x 1**



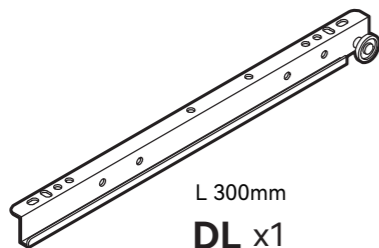
L 300mm

**CL x 1**



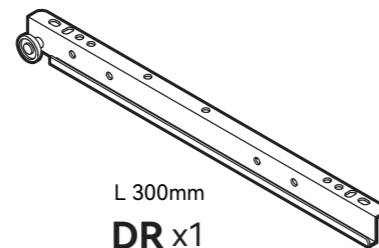
L 300mm

**CR x 1**



L 300mm

**DL x 1**




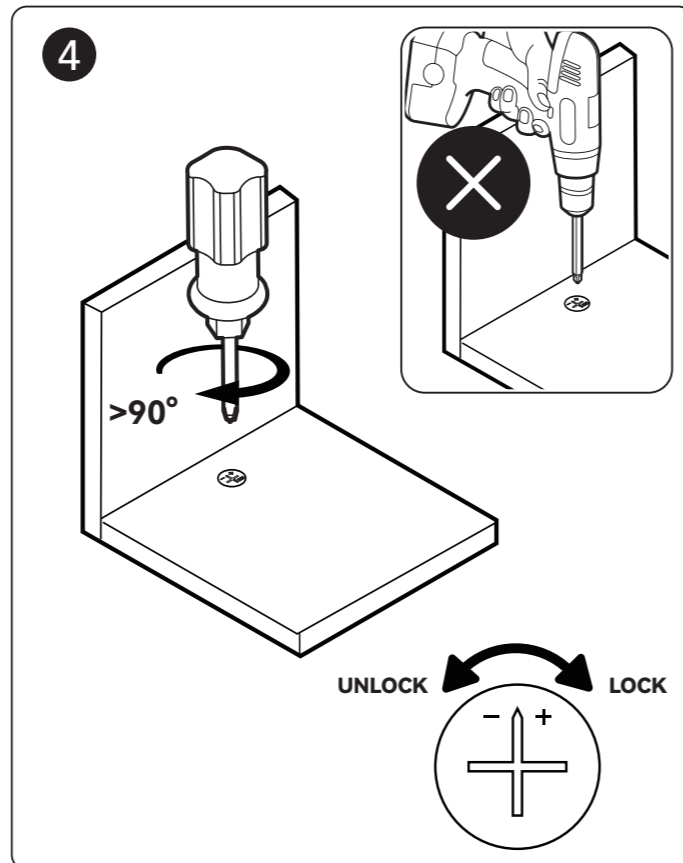
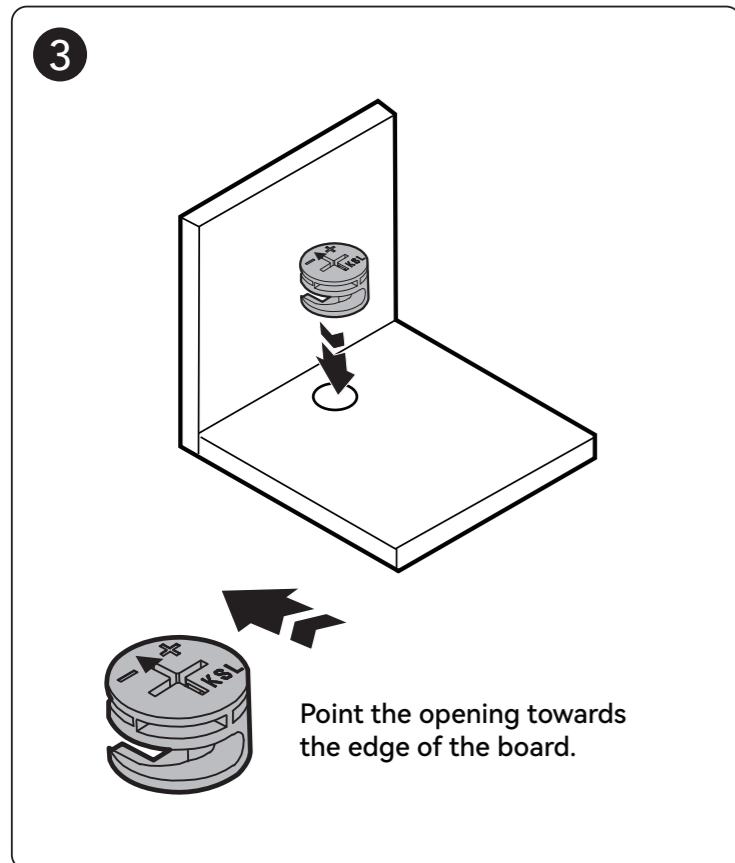
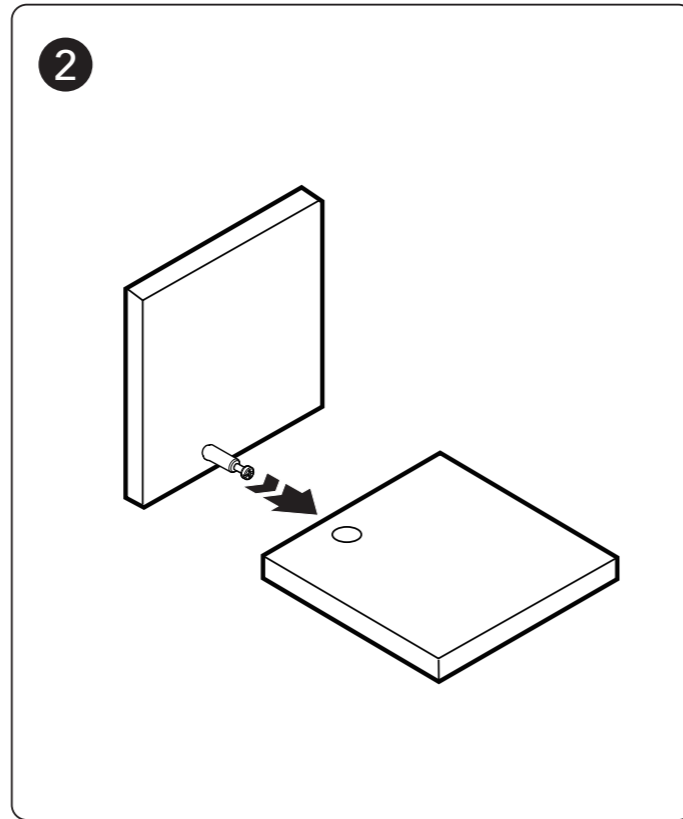
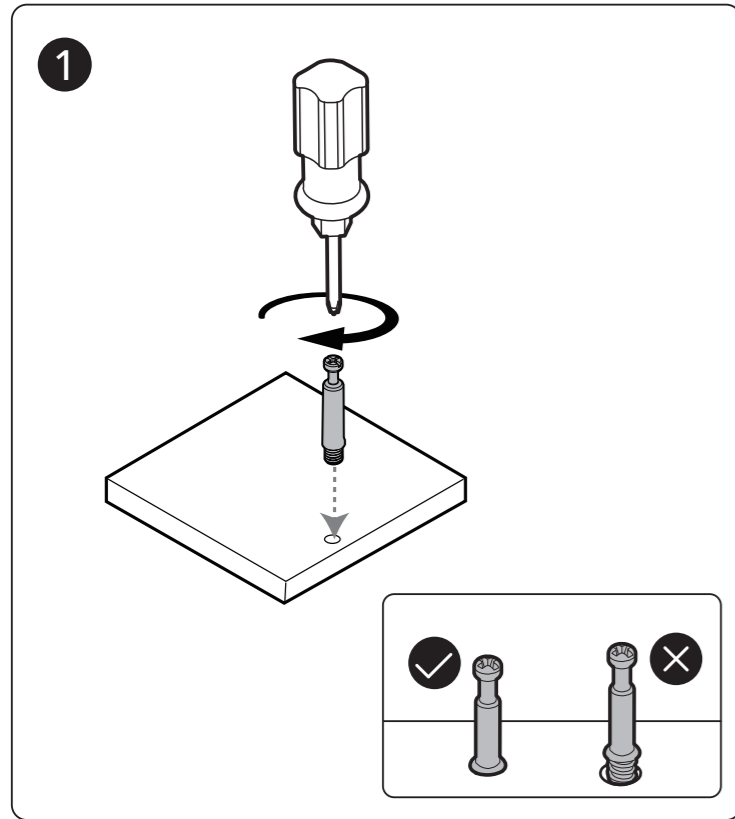
L 300mm

**DR x 1**

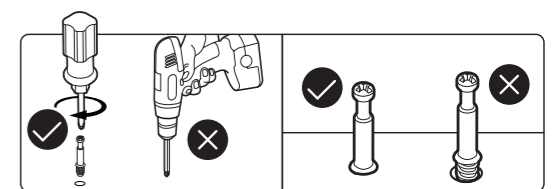
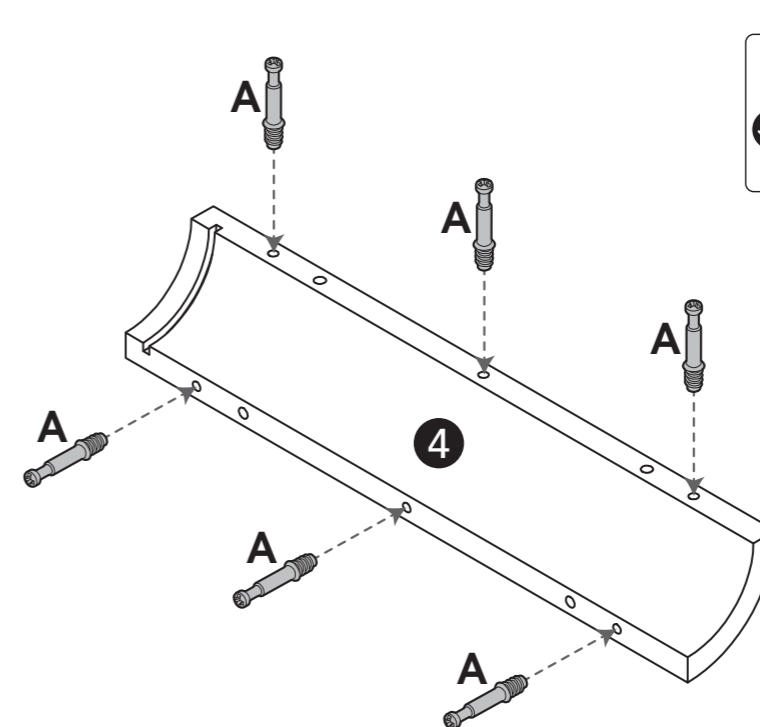
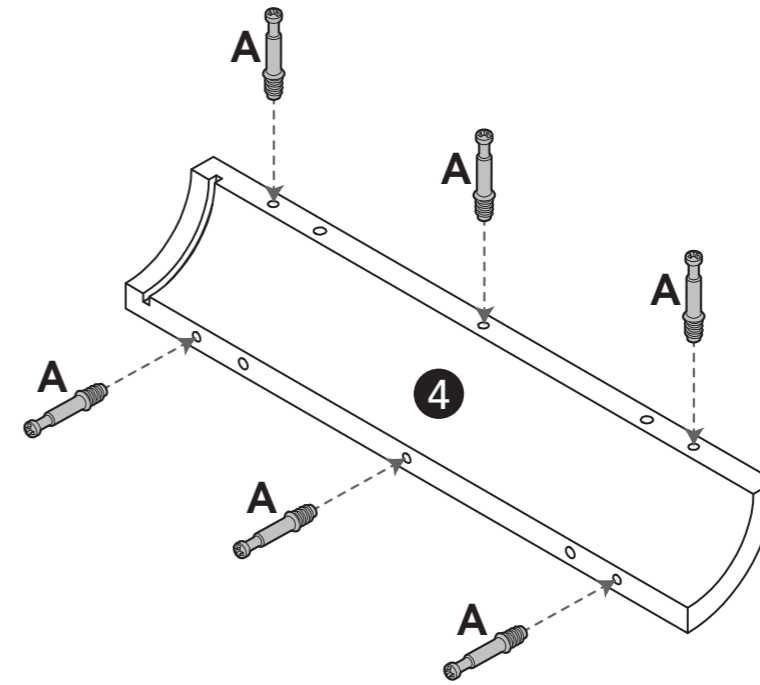
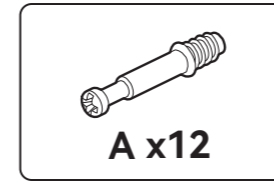
# CAM LOCK FASTEN SYSTEM

# ASSEMBLY

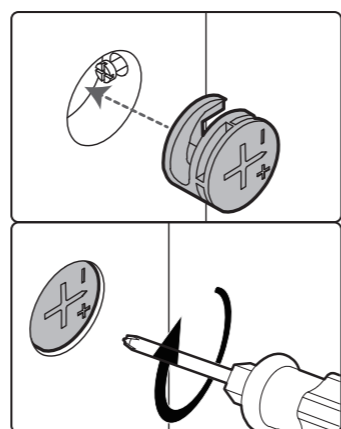
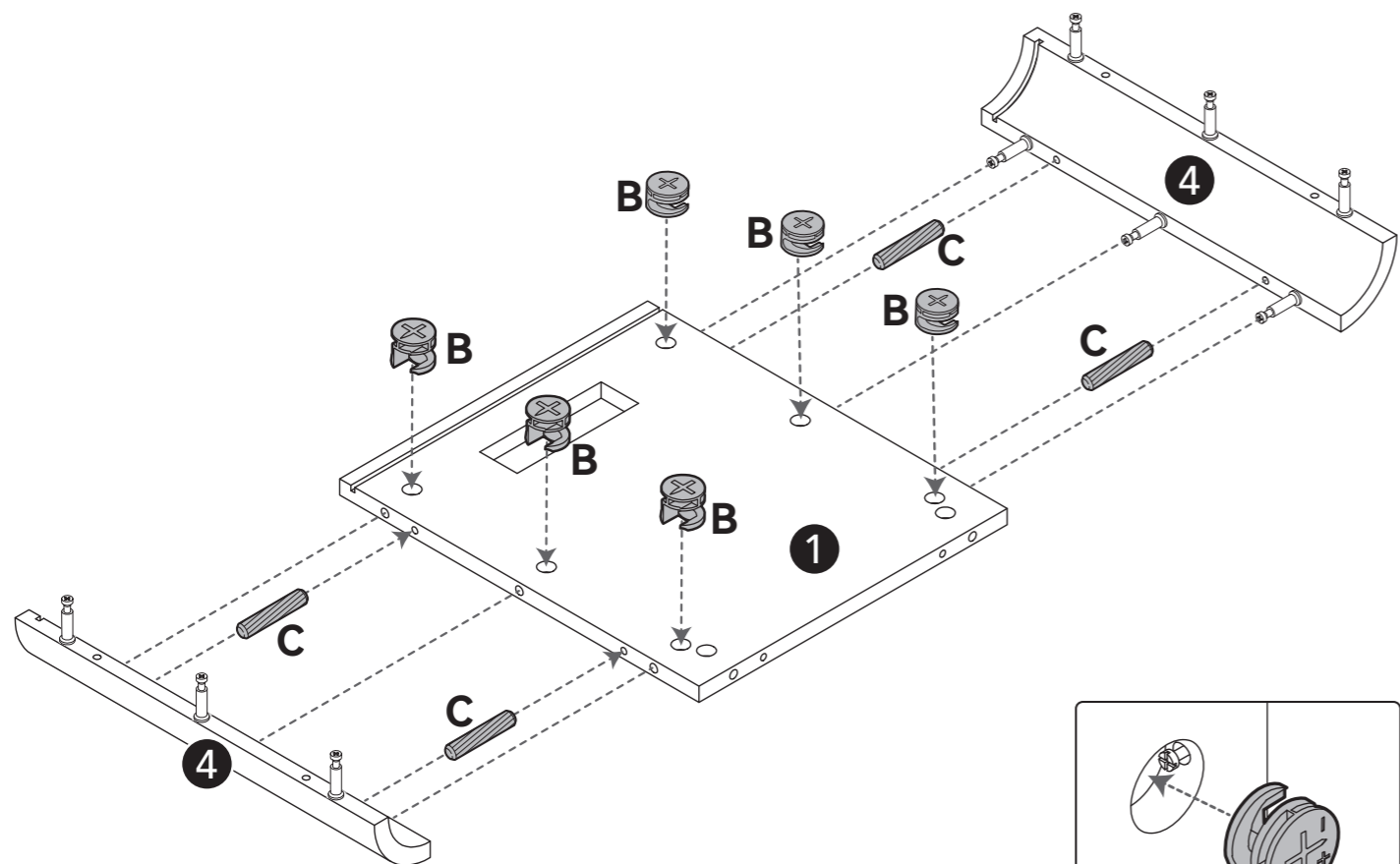
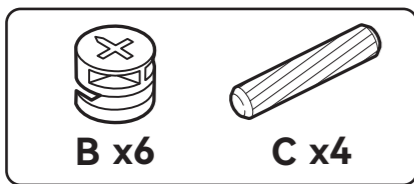
 Insert the cam bolt into the hole, then insert the cam lock and tighten.



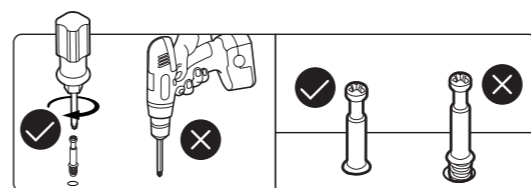
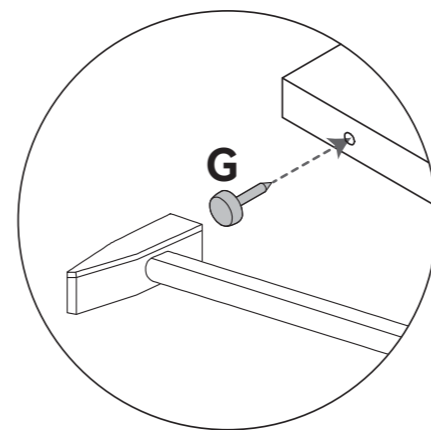
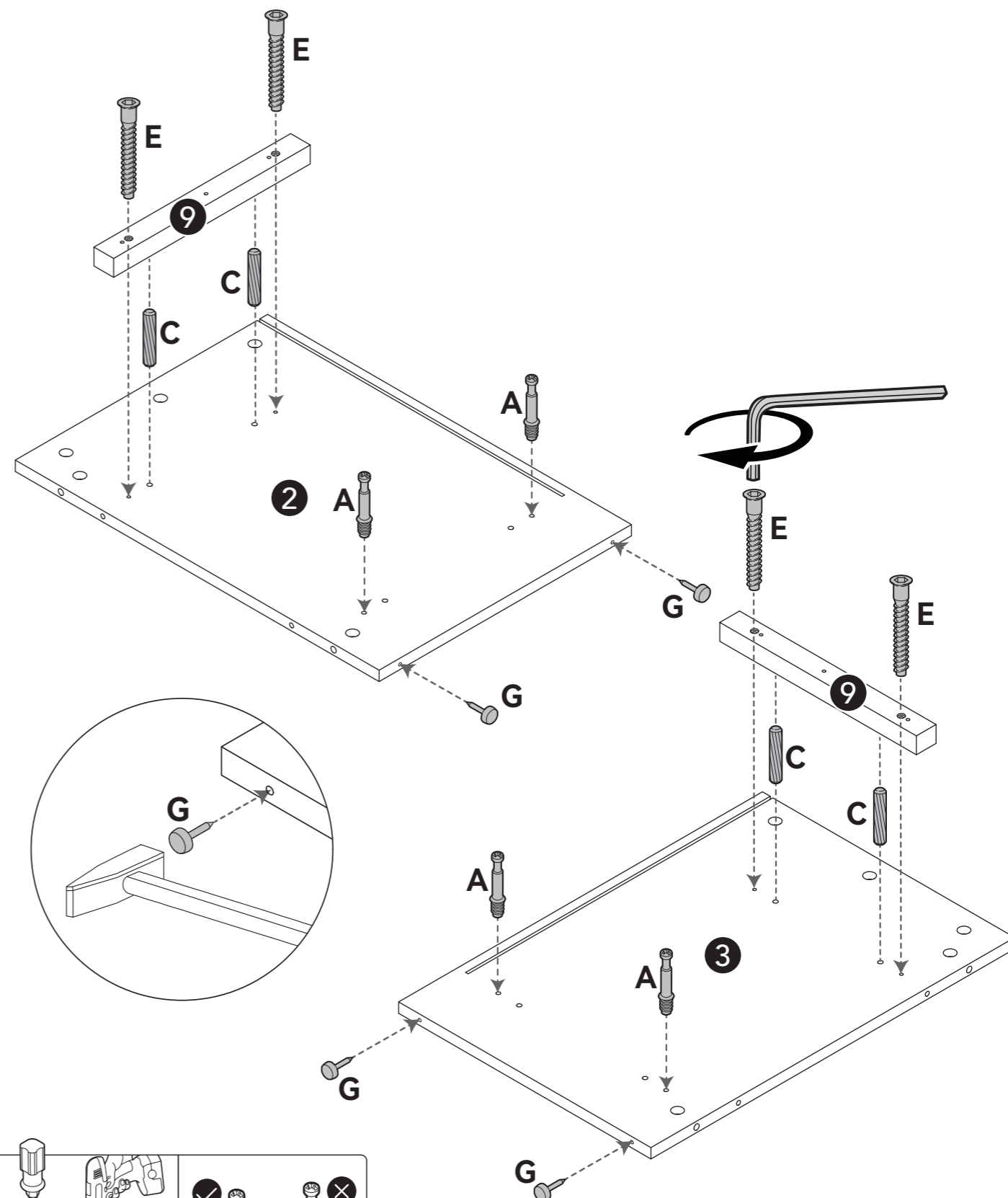
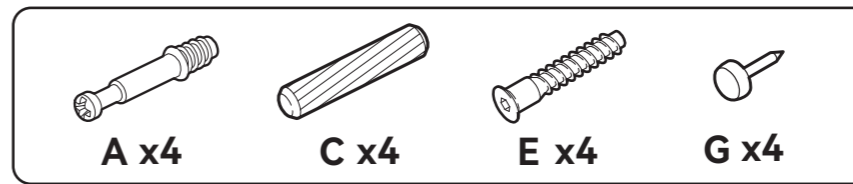
1



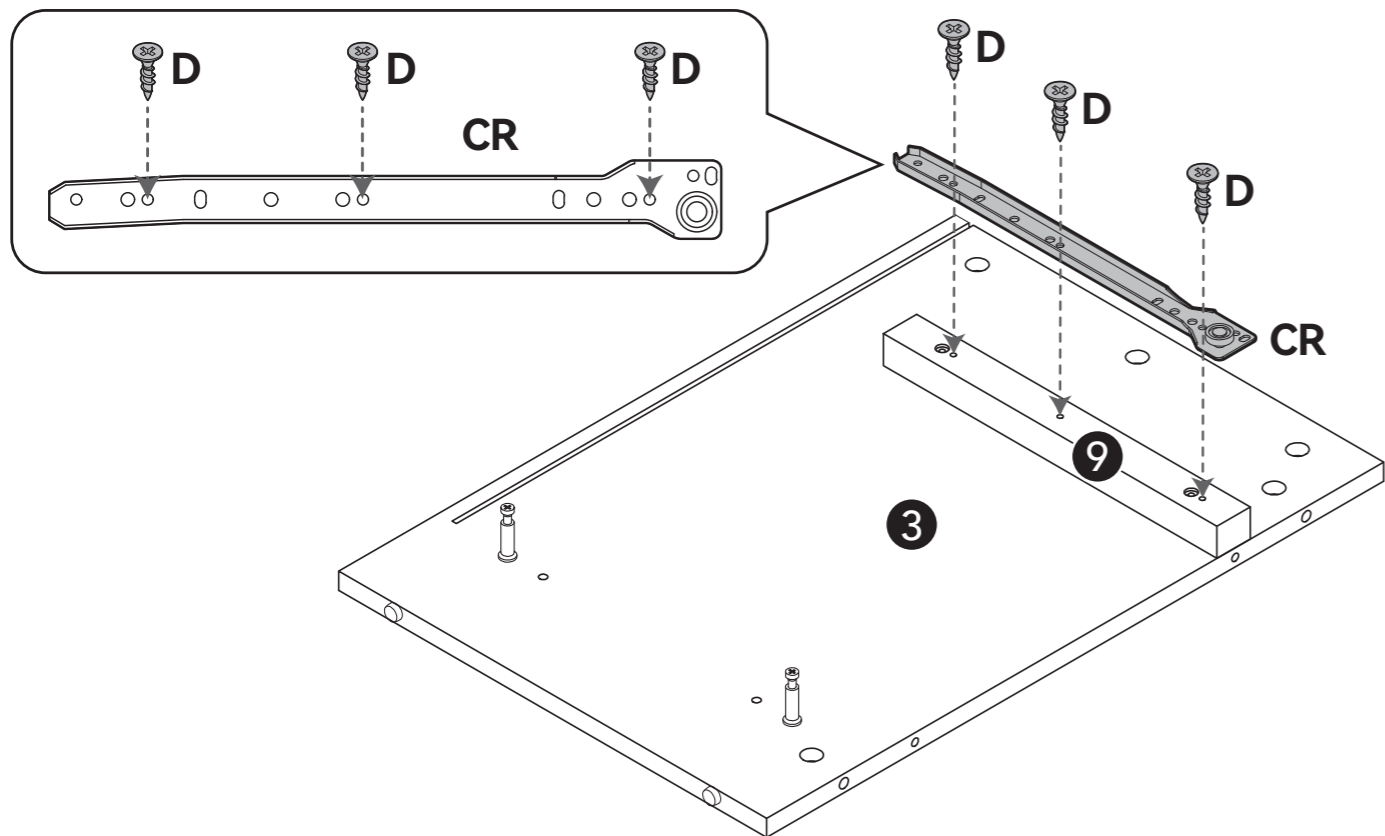
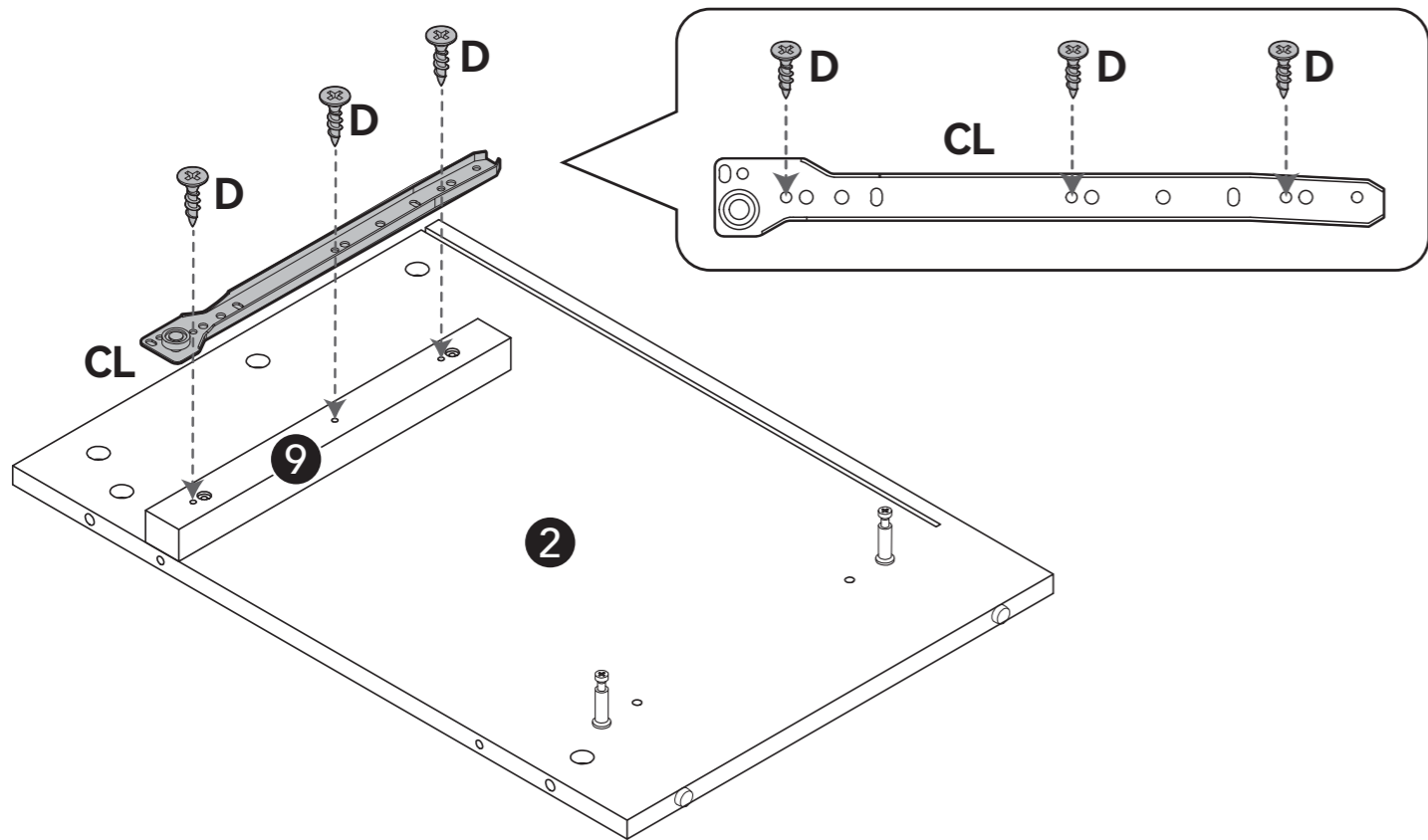
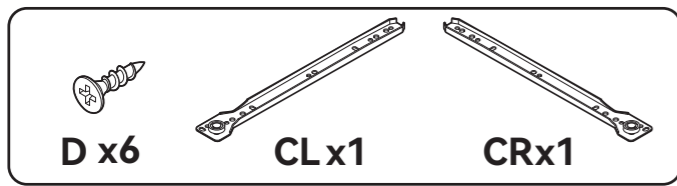
# 2



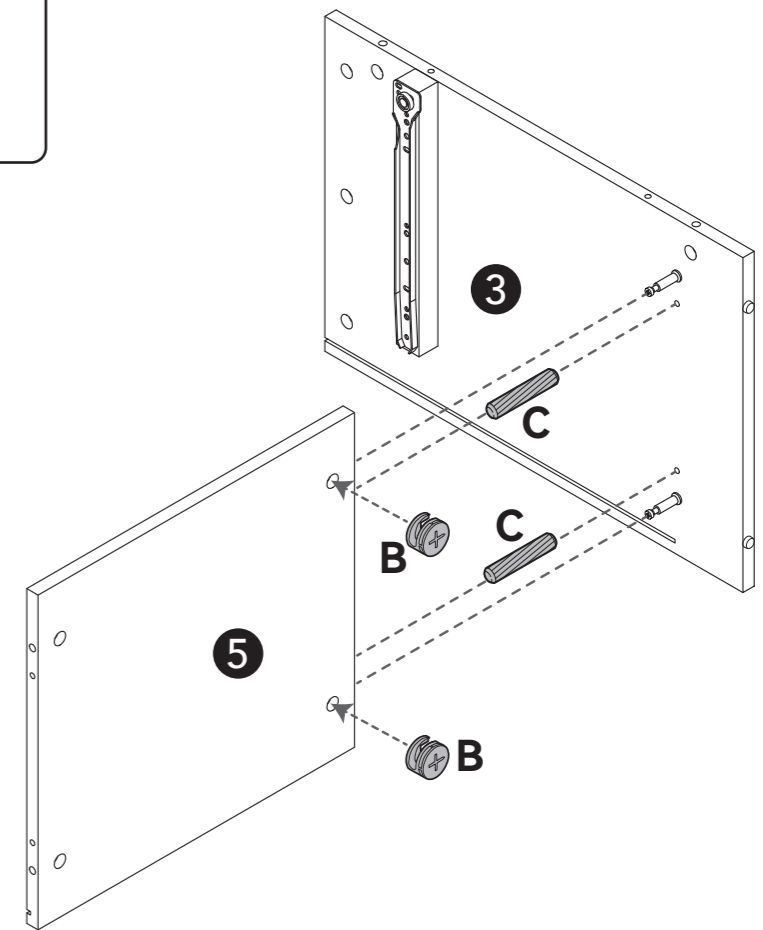
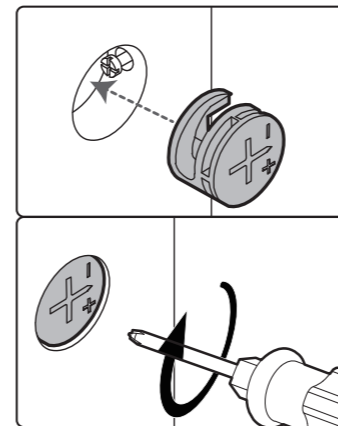
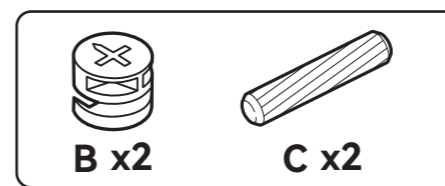
# 3



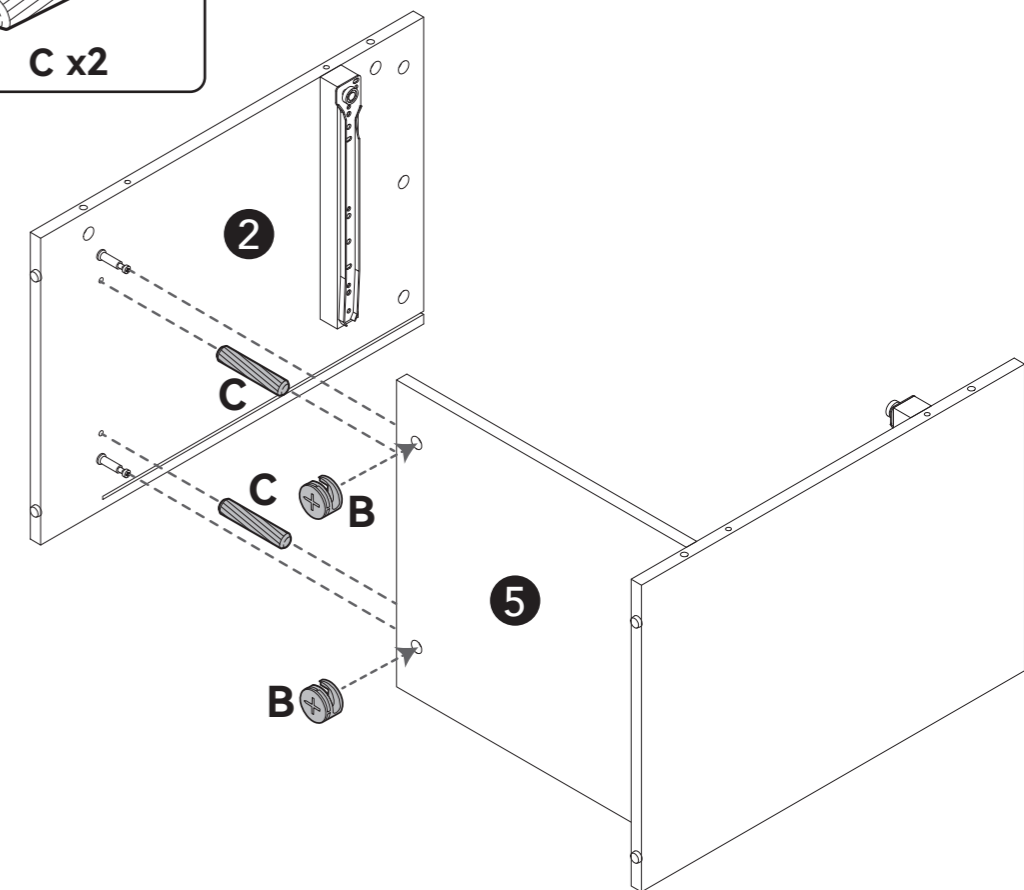
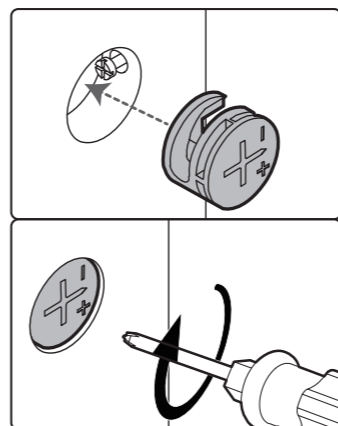
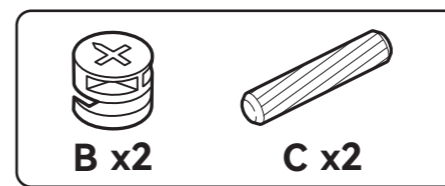
# 4



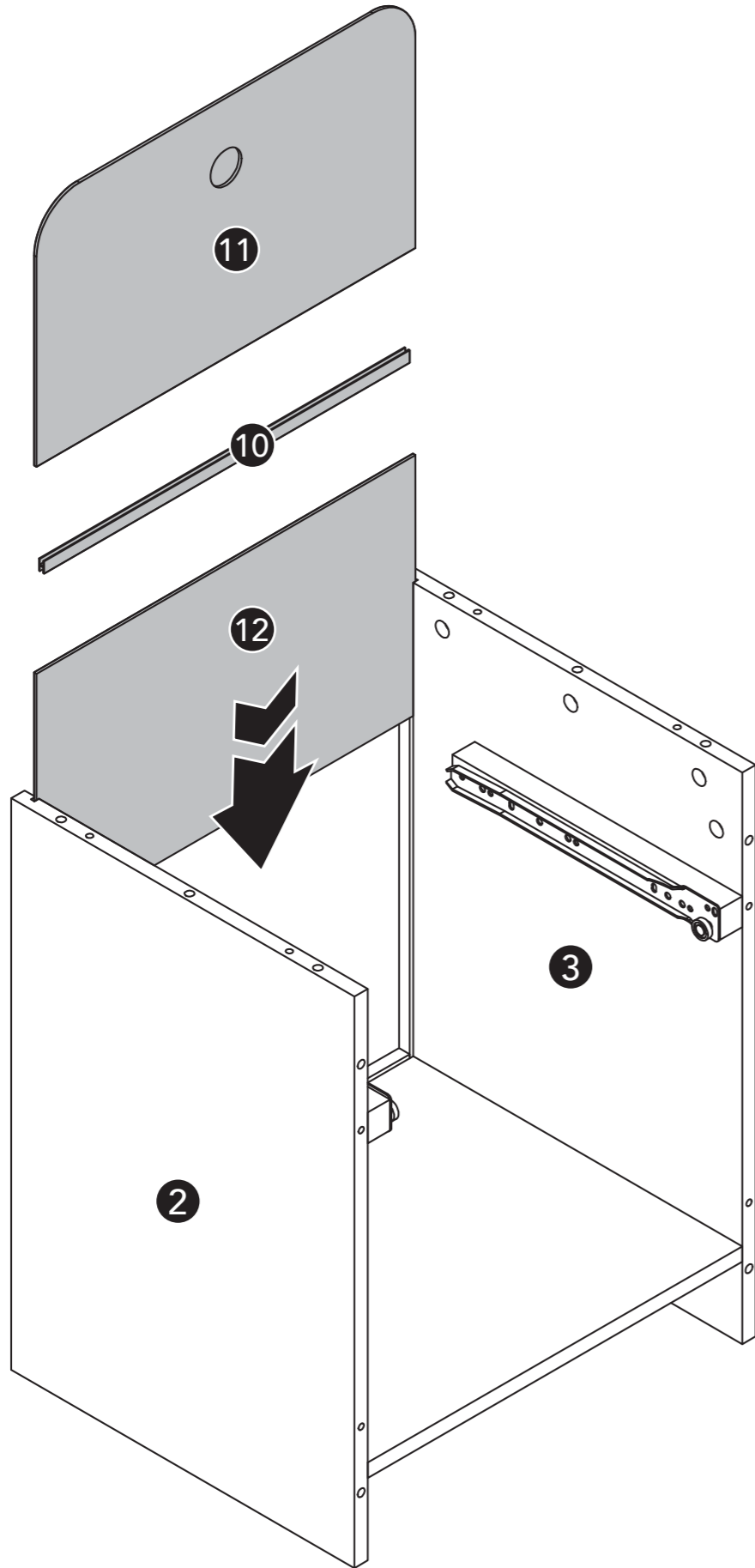
# 5



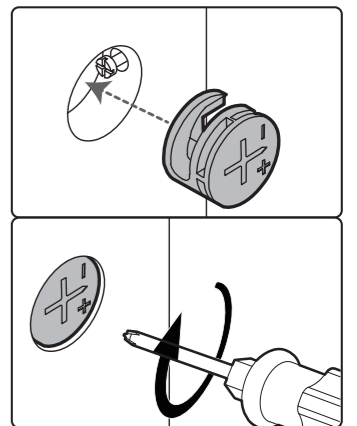
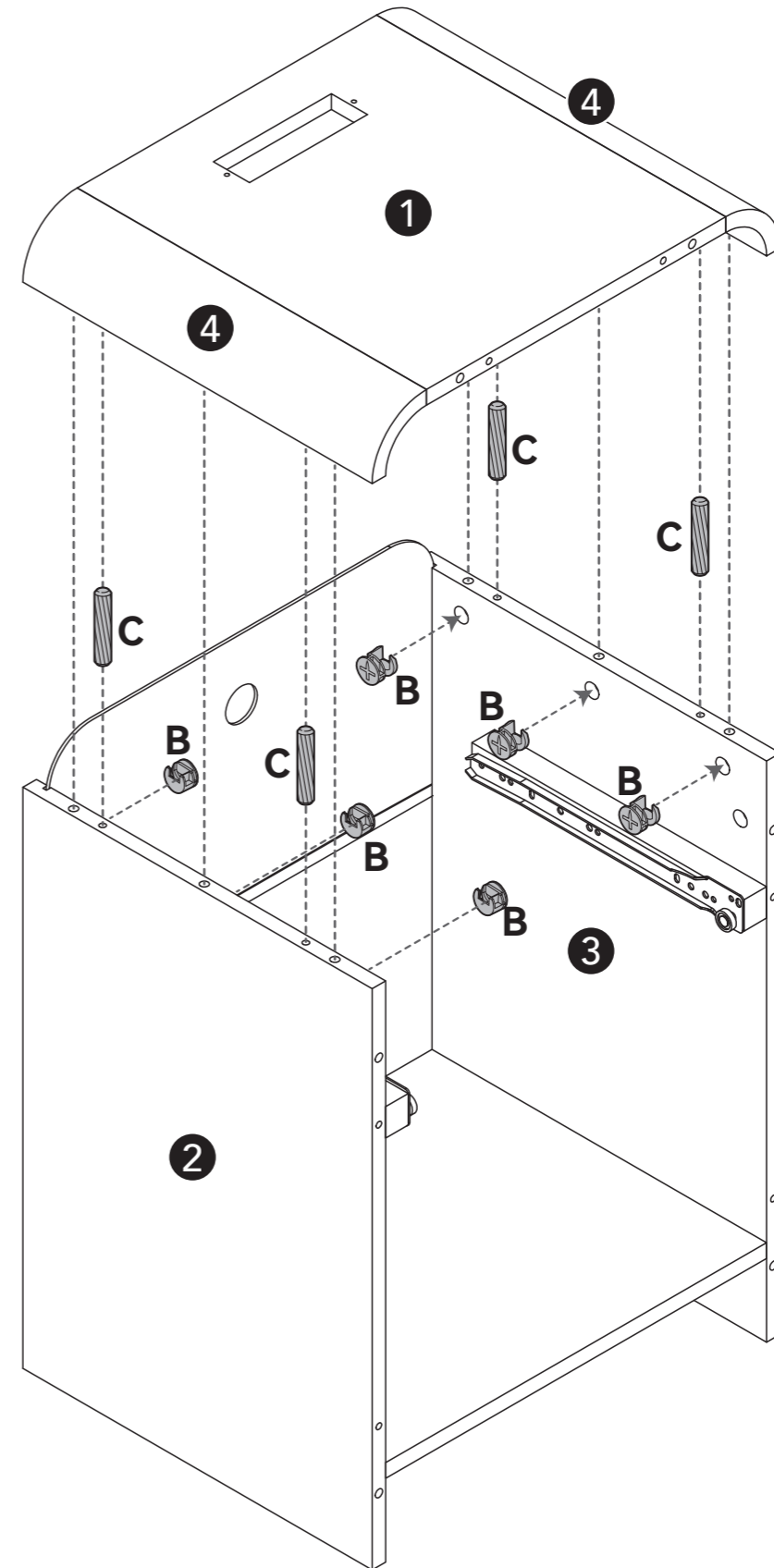
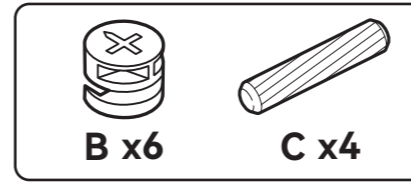
# 6



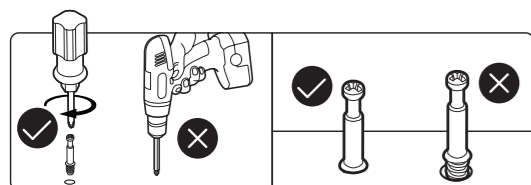
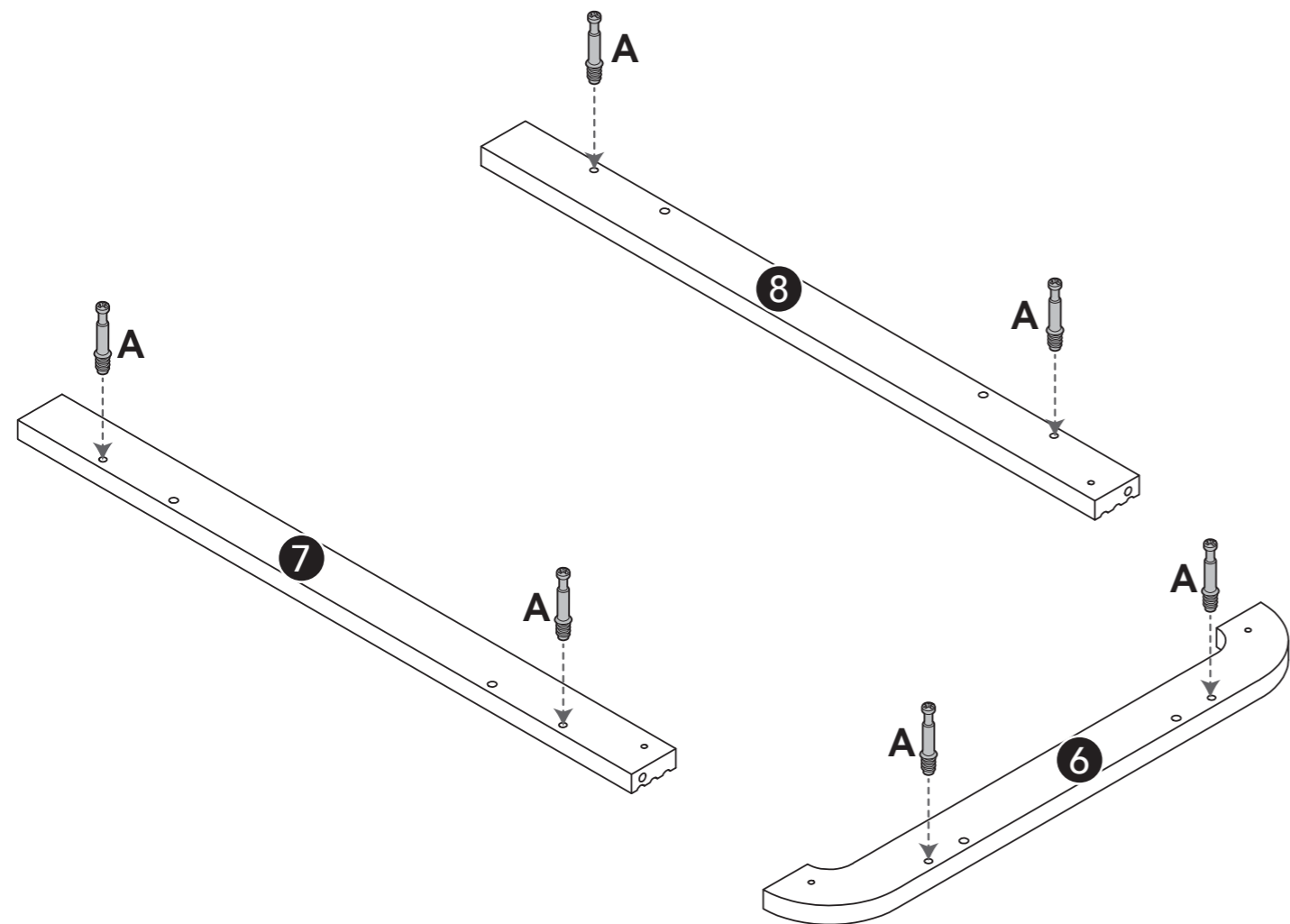
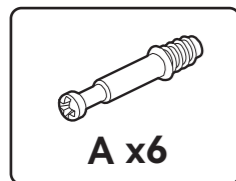
# 7



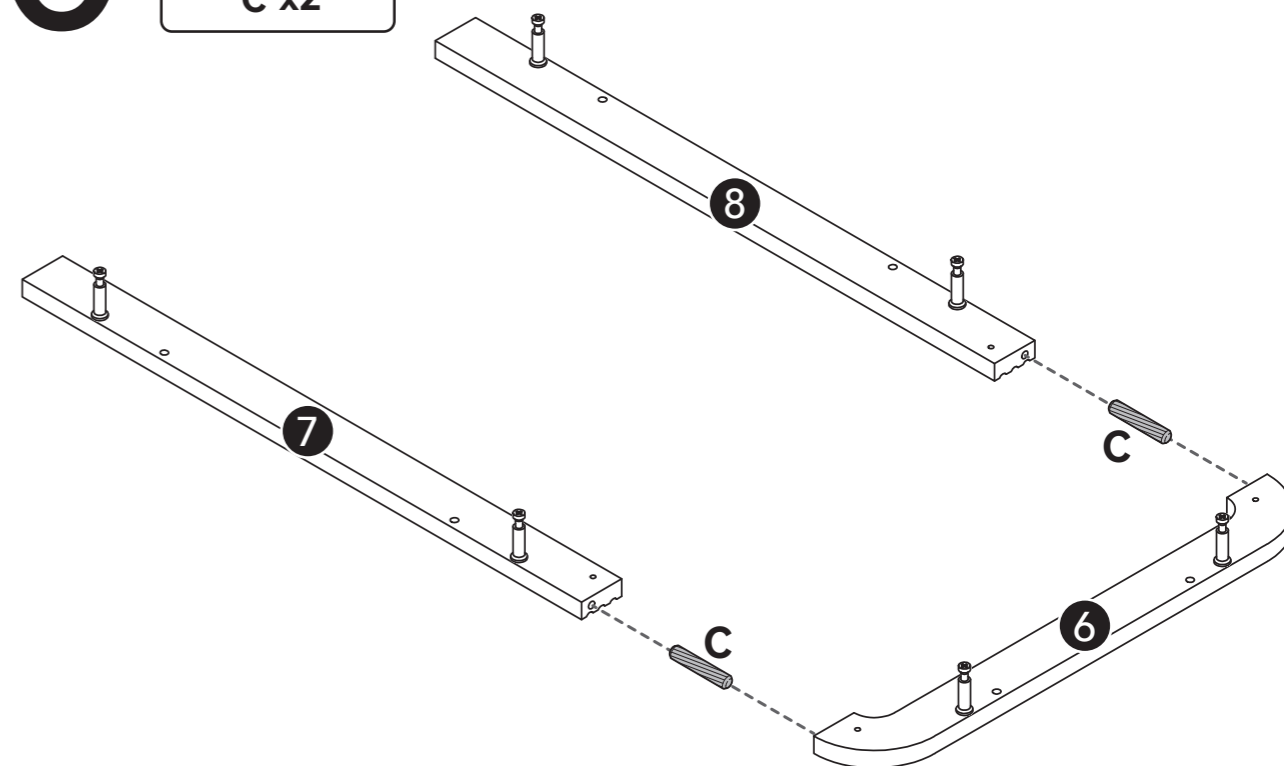
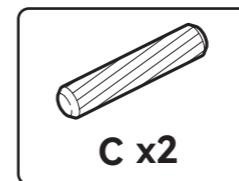
# 8



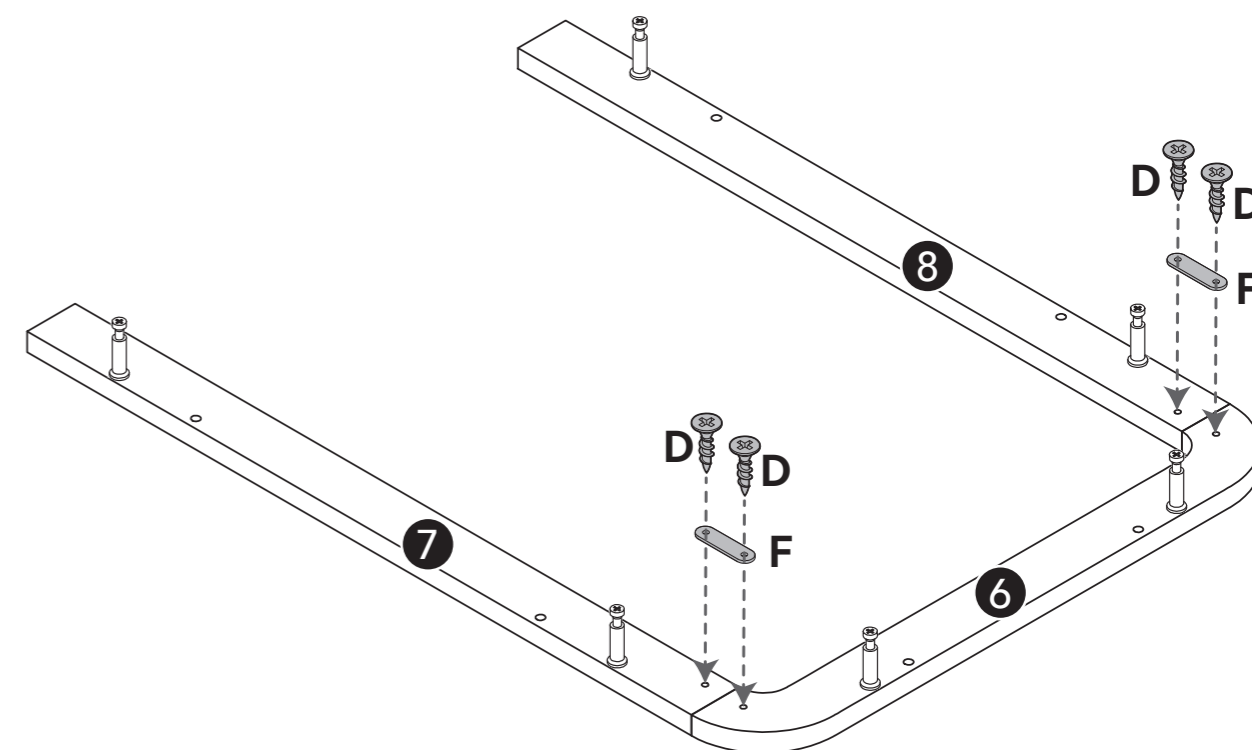
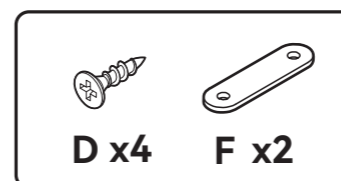
# 9



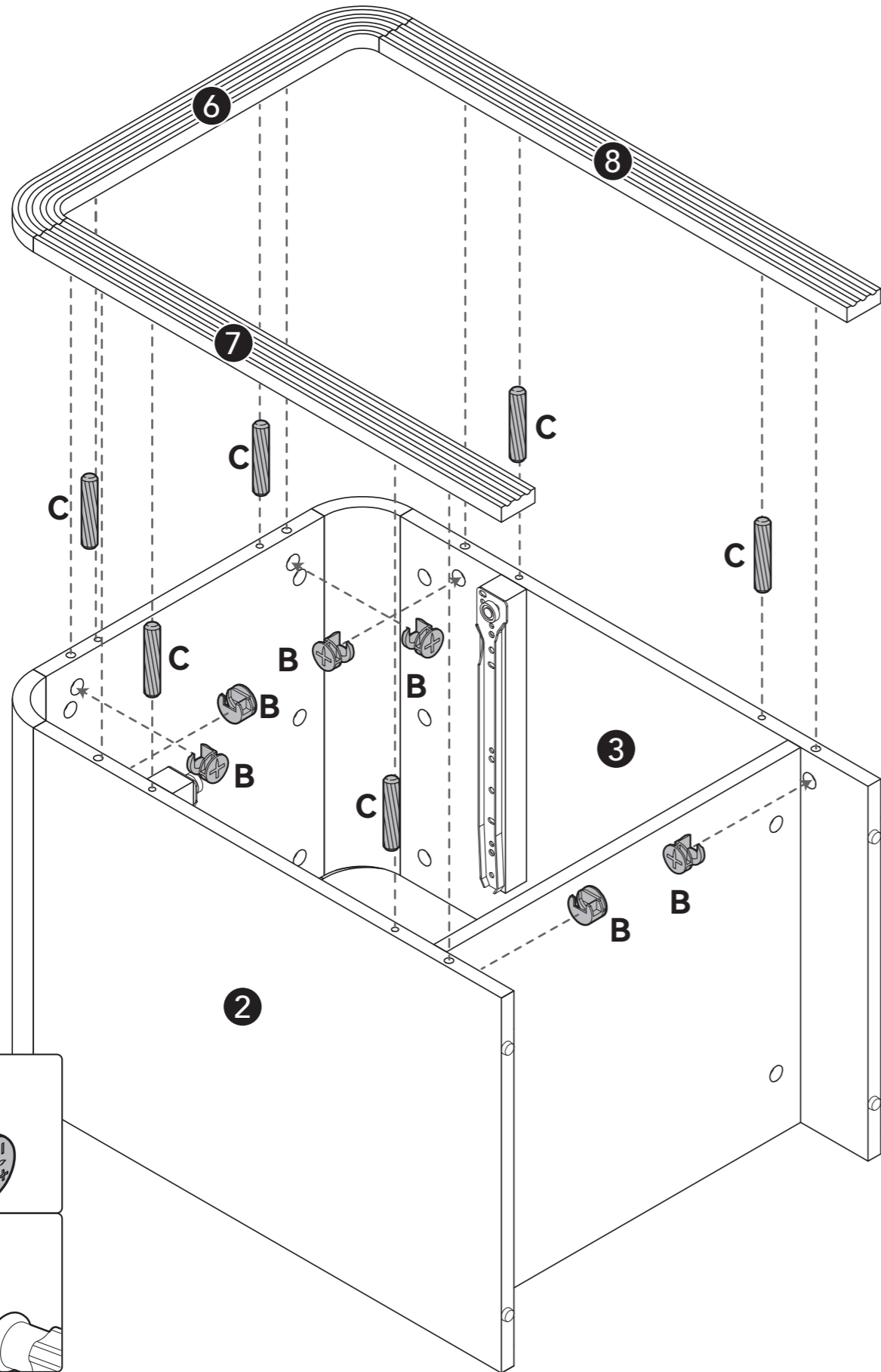
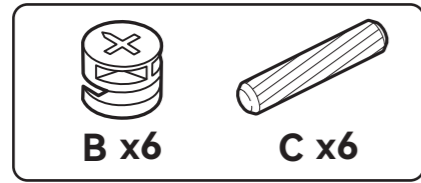
# 10



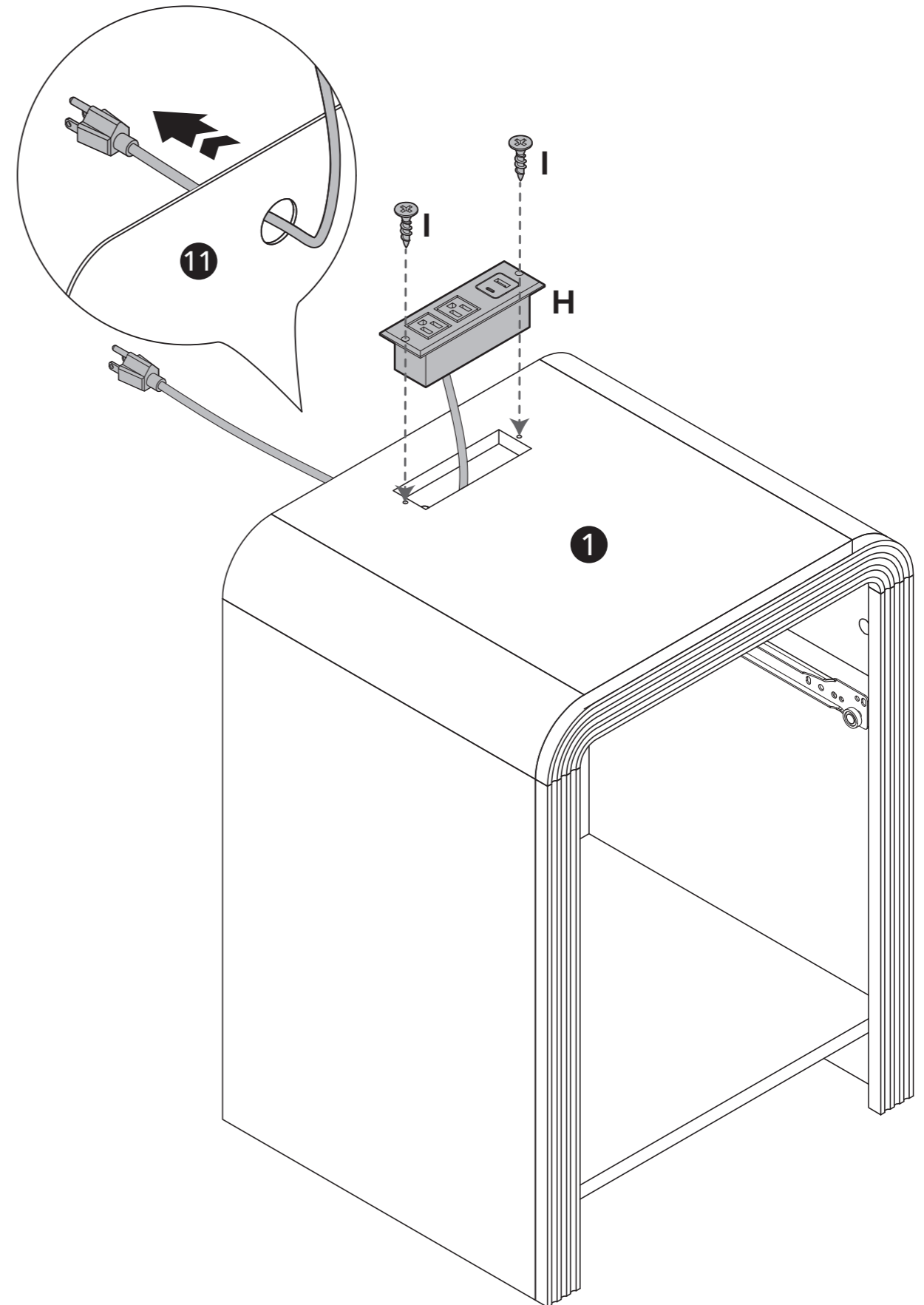
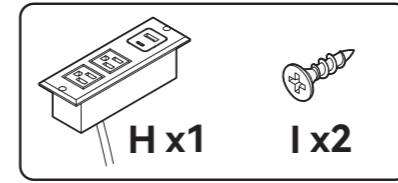
# 11



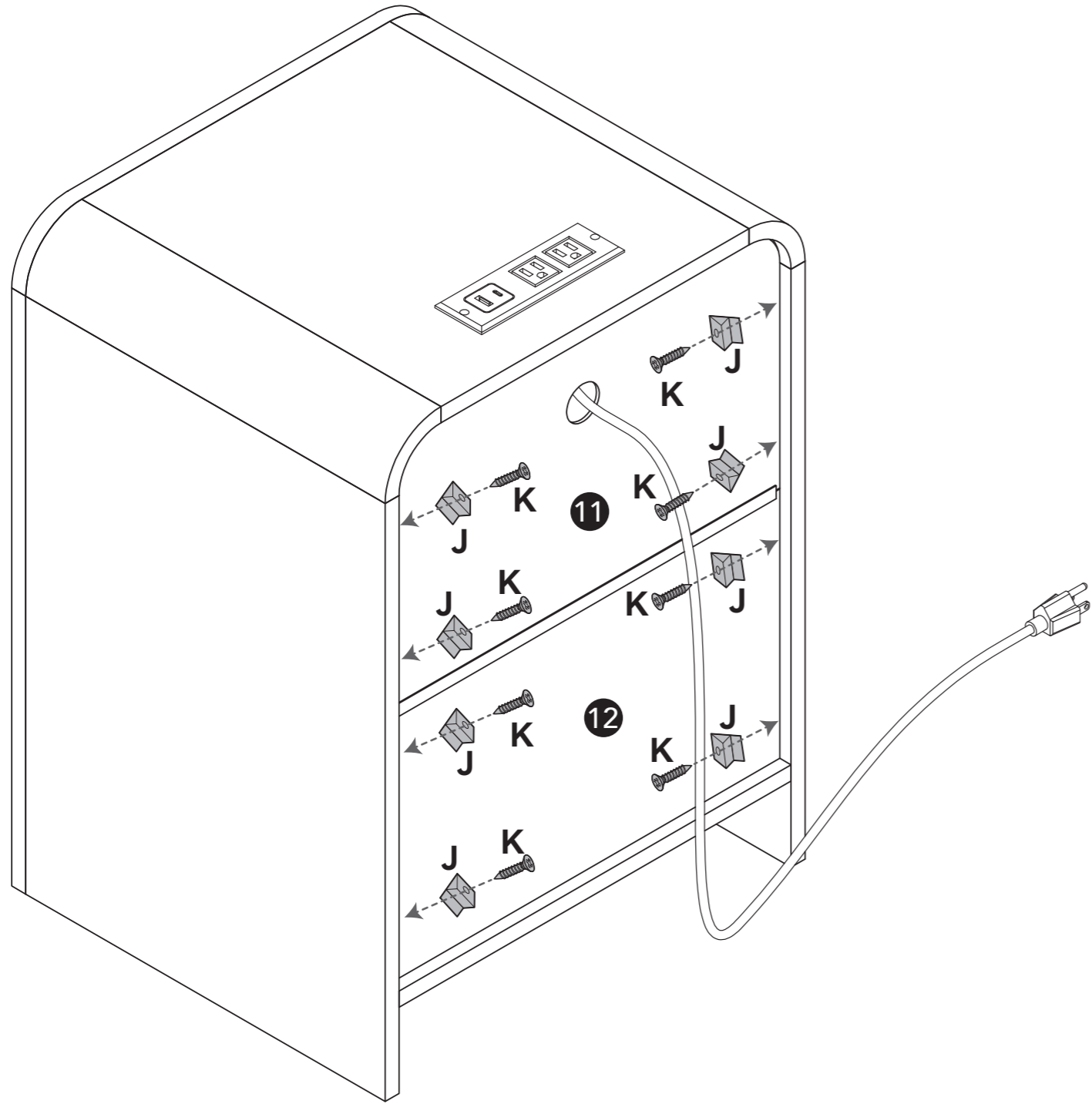
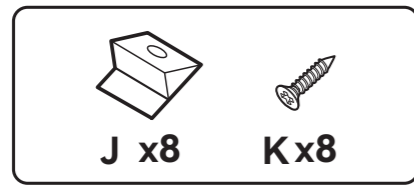
# 12



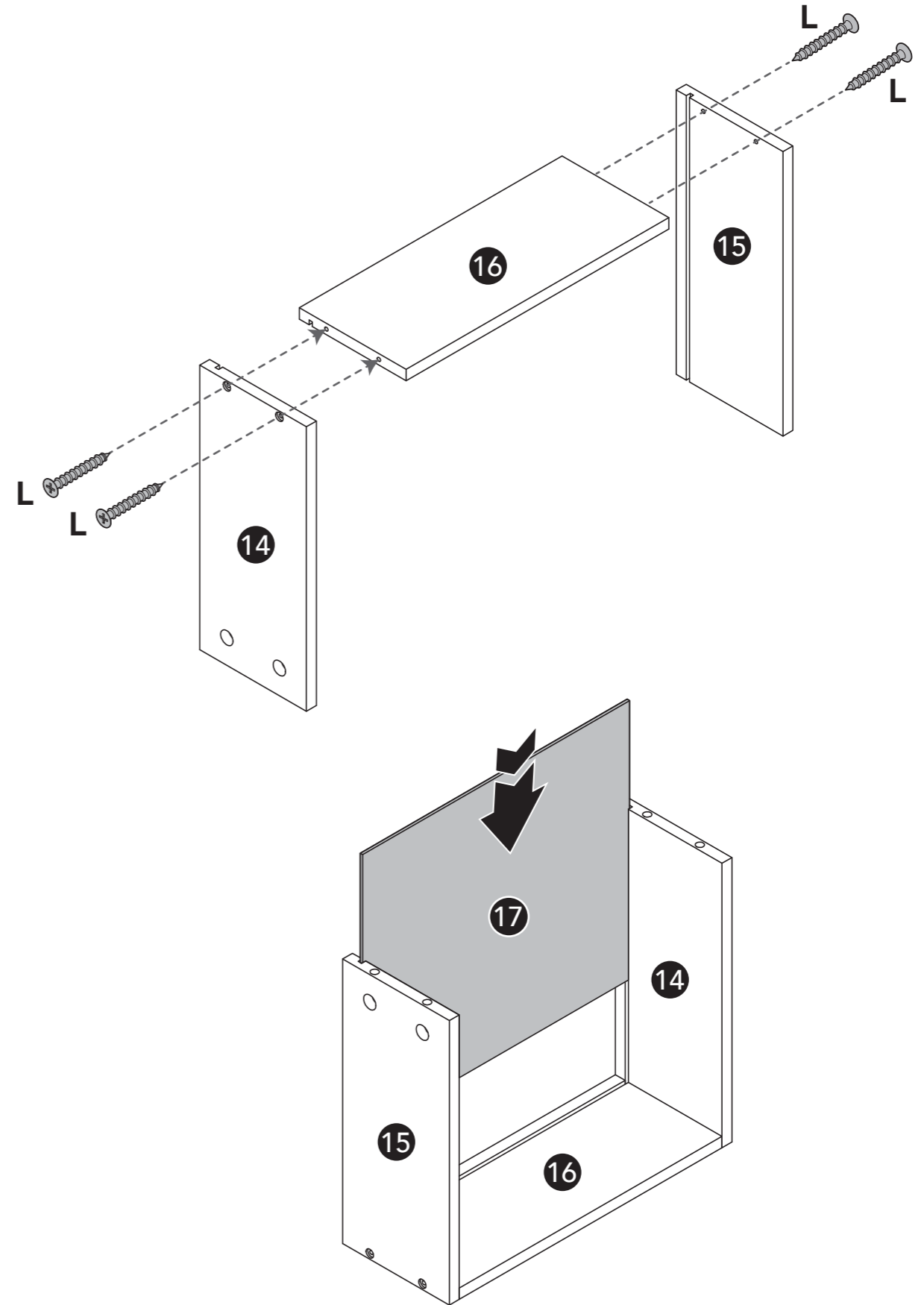
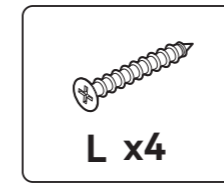
# 13



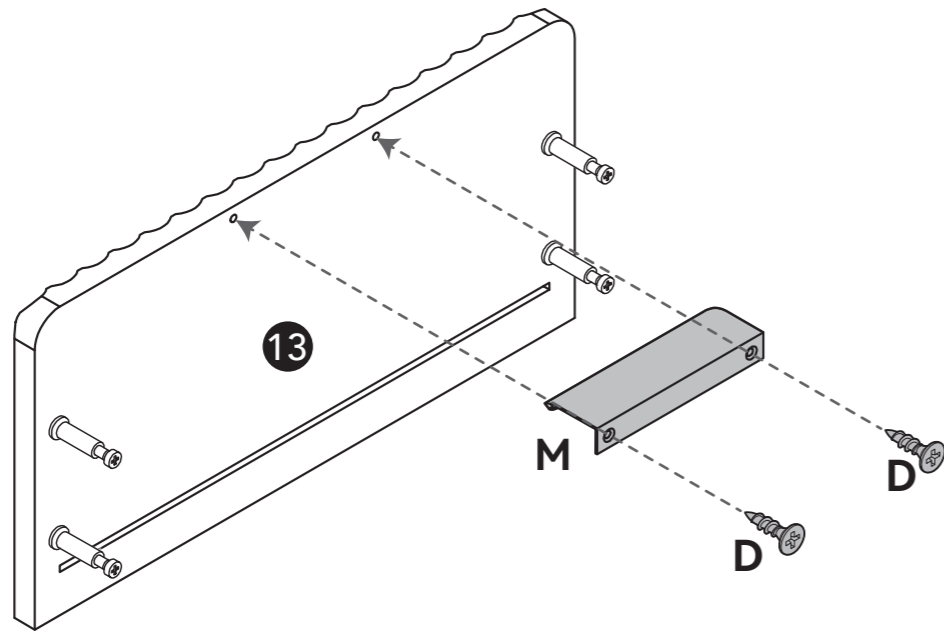
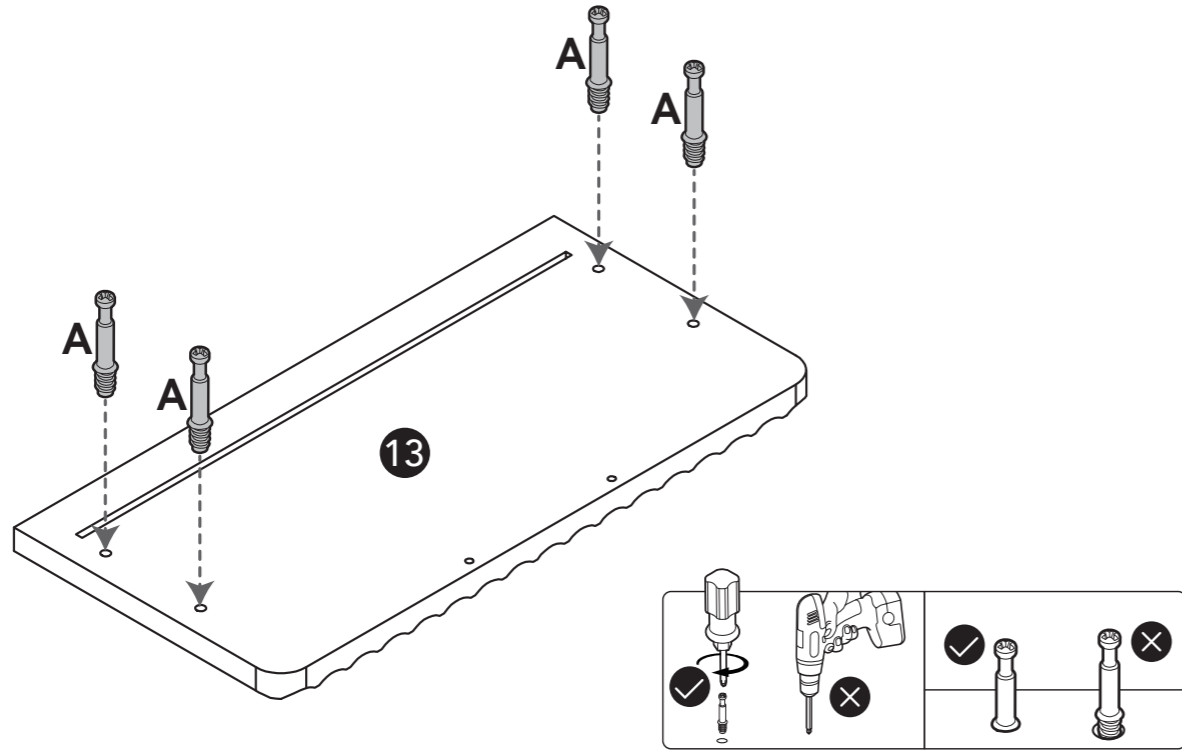
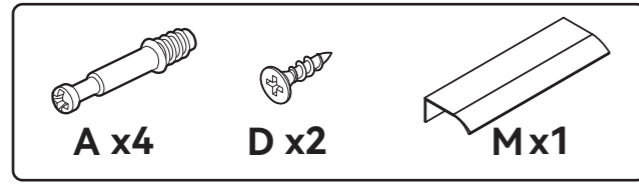
# 14



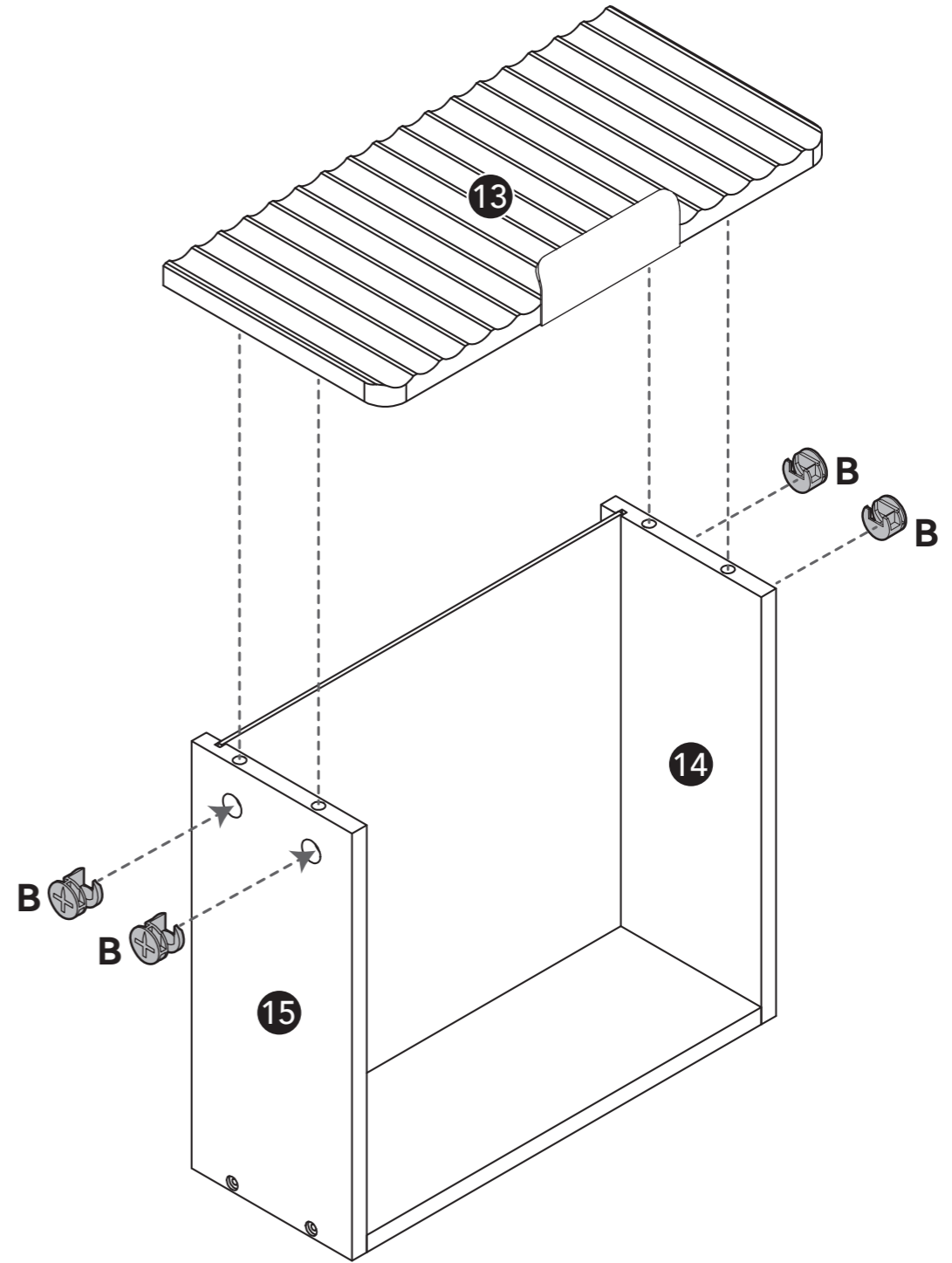
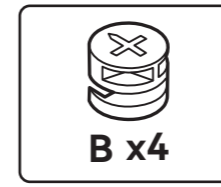
# 15



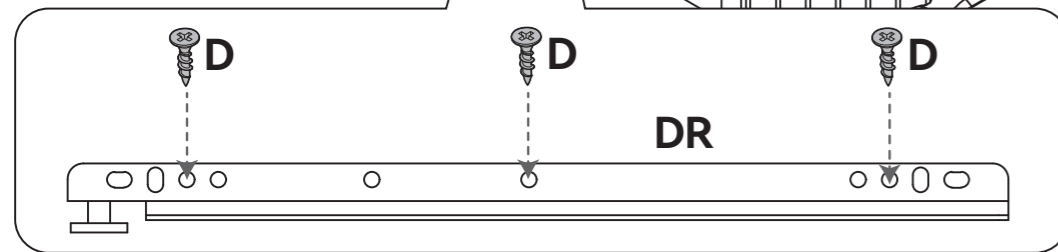
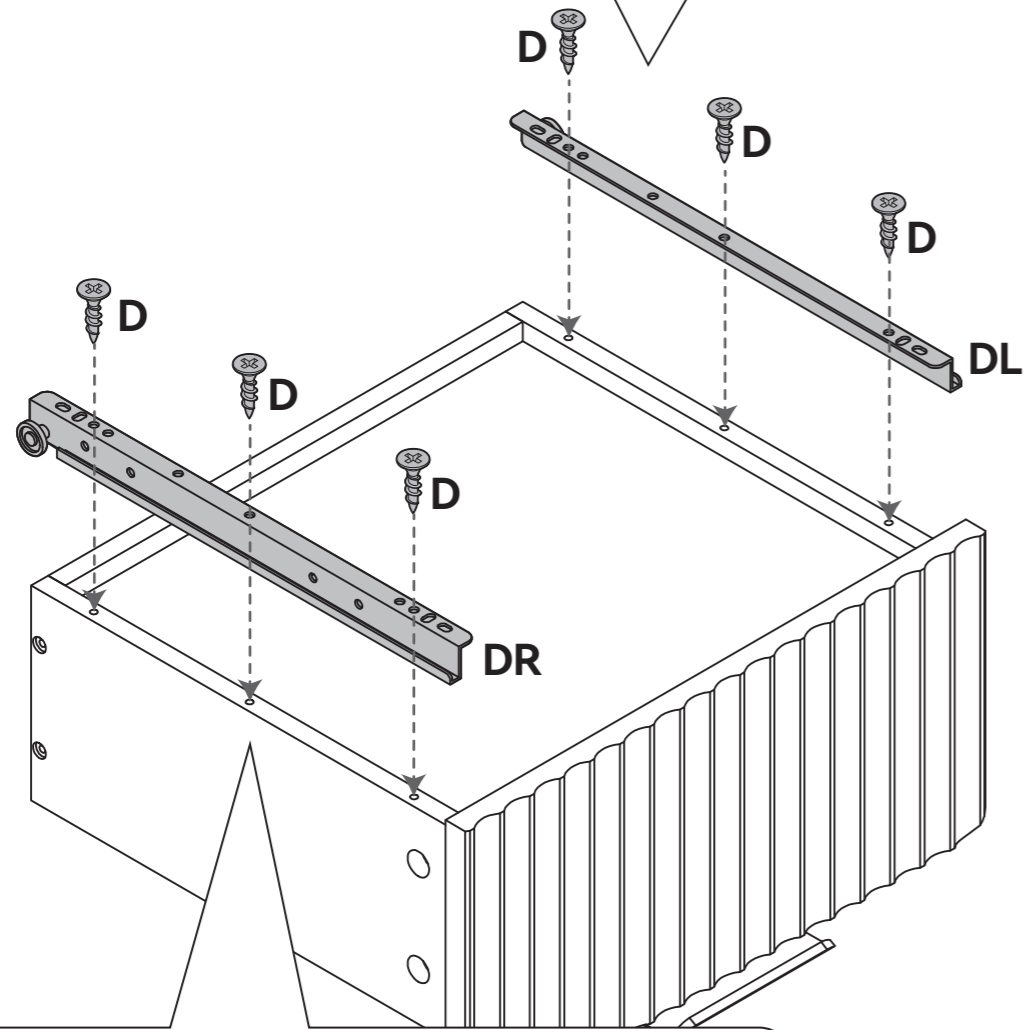
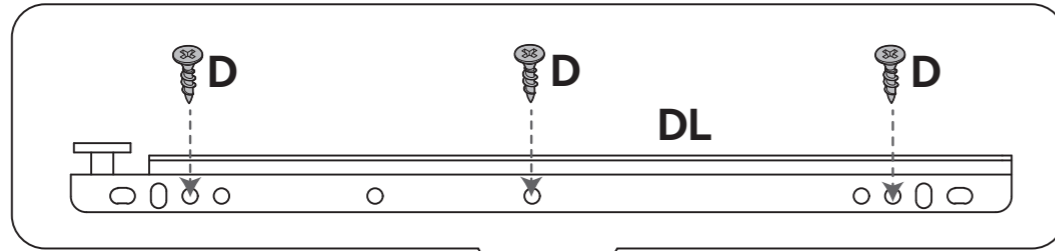
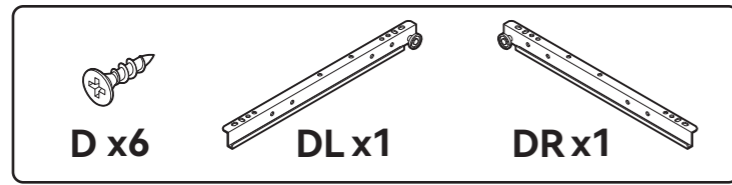
# 16



# 17



# 18



# 19

