

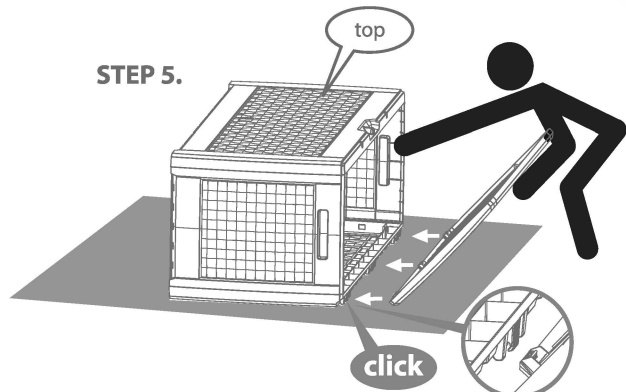
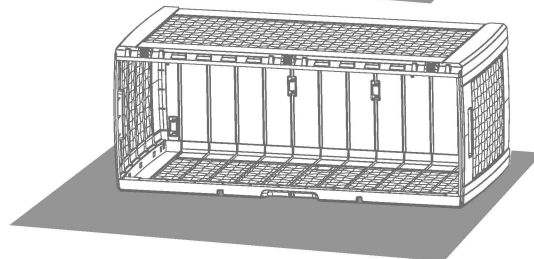
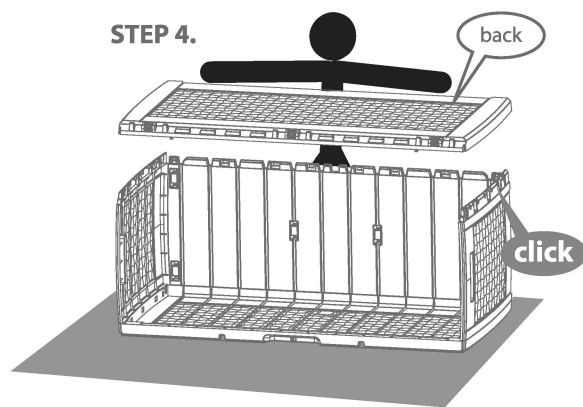
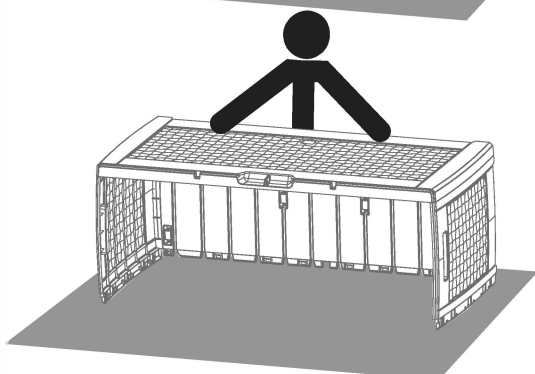
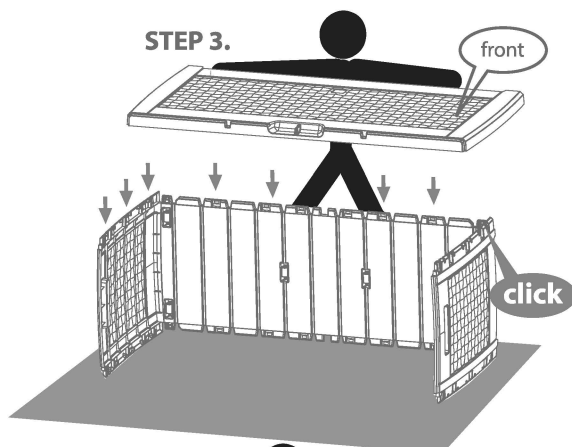
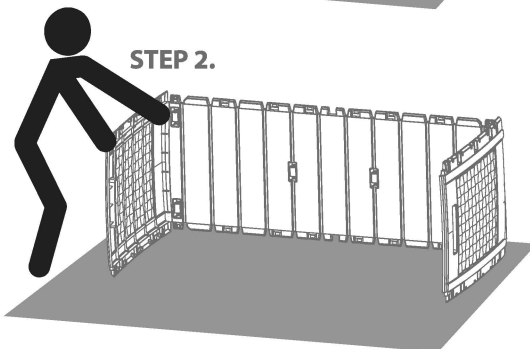
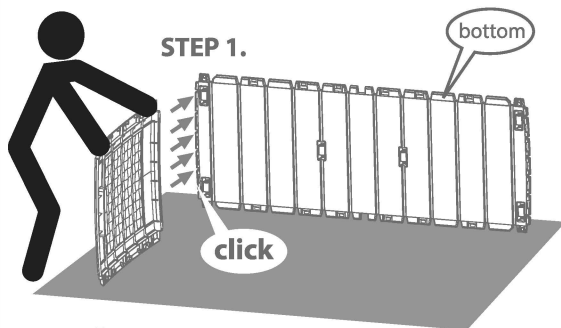
FOLLOW THE INSTURCTION with caution - STEP BY STEP!!!

Instrukcja montazu - post puj zgodnie z instrukcja krok po kroku.

1. PUT ALL THE PARTS ON A FLOOR.

2. FOLLOW THE ASSEMBLY INSTRUCTION CAREFULLY, STEP BY STEP.

1. Rozłóż wszystkie części na twardym podłożu. 2. Postępuj zgodnie z instrukcją, krok po kroku.

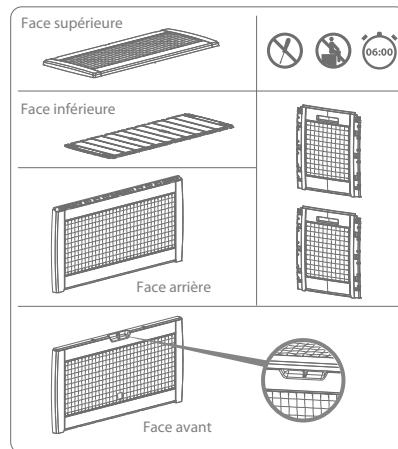
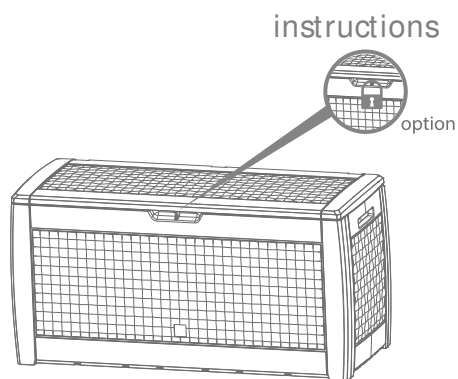


DO NOT SIT

Assembly Instruction - FOLLOW with caution STEP BY STEP!!!

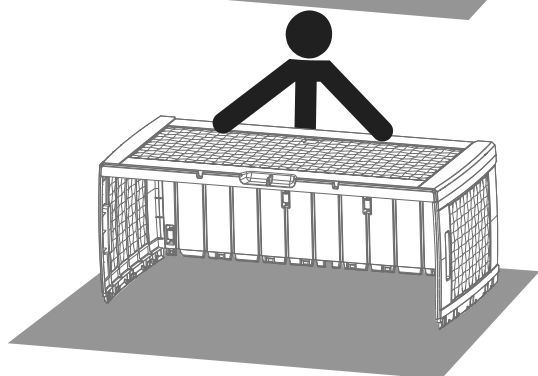
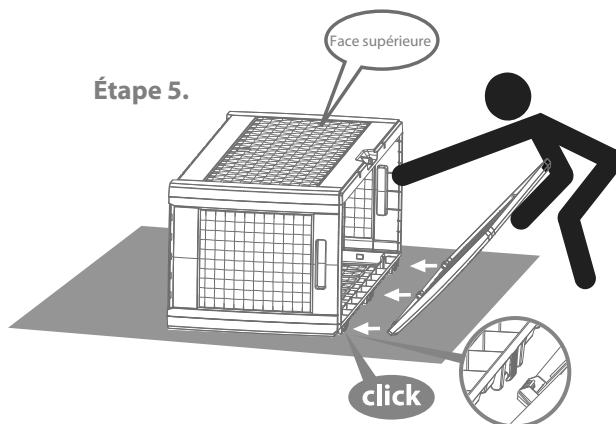
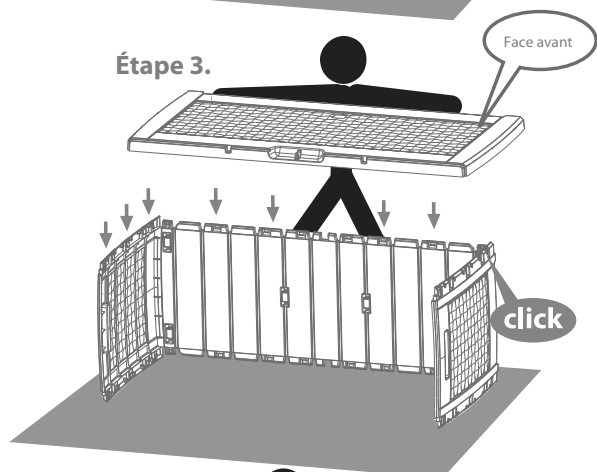
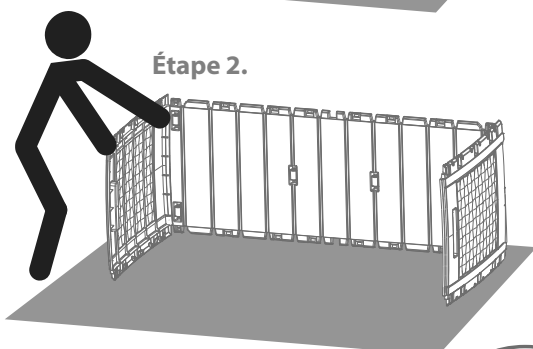
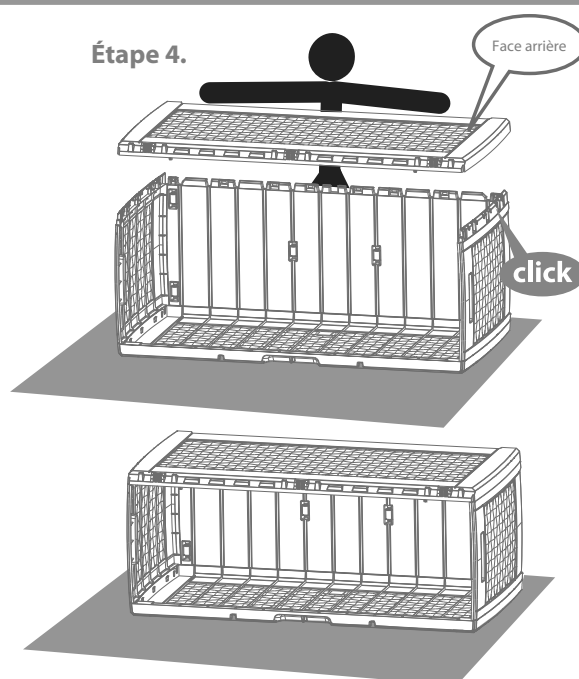
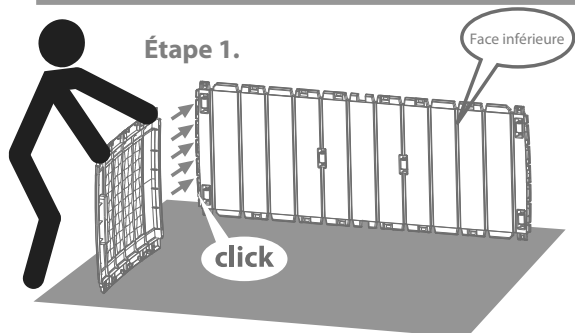
**Instrukcja montazu -
post puj zgodnie z instrukcja
krok po kroku.**

PL Instrukcja montazu
EN Assembly instruction
DE Montageanleitung
FR Instructions de montage
ES Instrucciones de montaje
IT Istruzioni di montaggio
NL Montage instructie
SE Monteringsanvisningar
FI Asennusohjeet
NO Monteringsanvisning
LT Montavimo instrukcijos
LV Montāžas instrukcija
EE Paigaldusjuhend
CZ Navod montážní
SK Navod na montáž
HR upute za montazu
SLO Navodila za sestavljanje
HU Szerelési utasítás
RO Instrucțiuni de asamblare
BG Инструкция за монтаж
RU Инструкция по сборке
UA Інструкція з монтажу



VEUILLEZ SUIVRE LES INSTRUCTIONS DE MONTAGE avec précaution
ÉTAPE PAR ÉTAPE !!!

1: DÉPOSEZ TOUTES LES PIÈCES SUR LE SOL.
2: VEUILLEZ SUIVRE ATTENTIVEMENT LES INSTRUCTIONS DE MONTAGE ÉTAPE PAR



Ne pas s'asseoir dessus

**Notice de montage -
À SUIVRE avec précaution
ÉTAPE PAR ÉTAPE !!!**

FR Instructions de montage