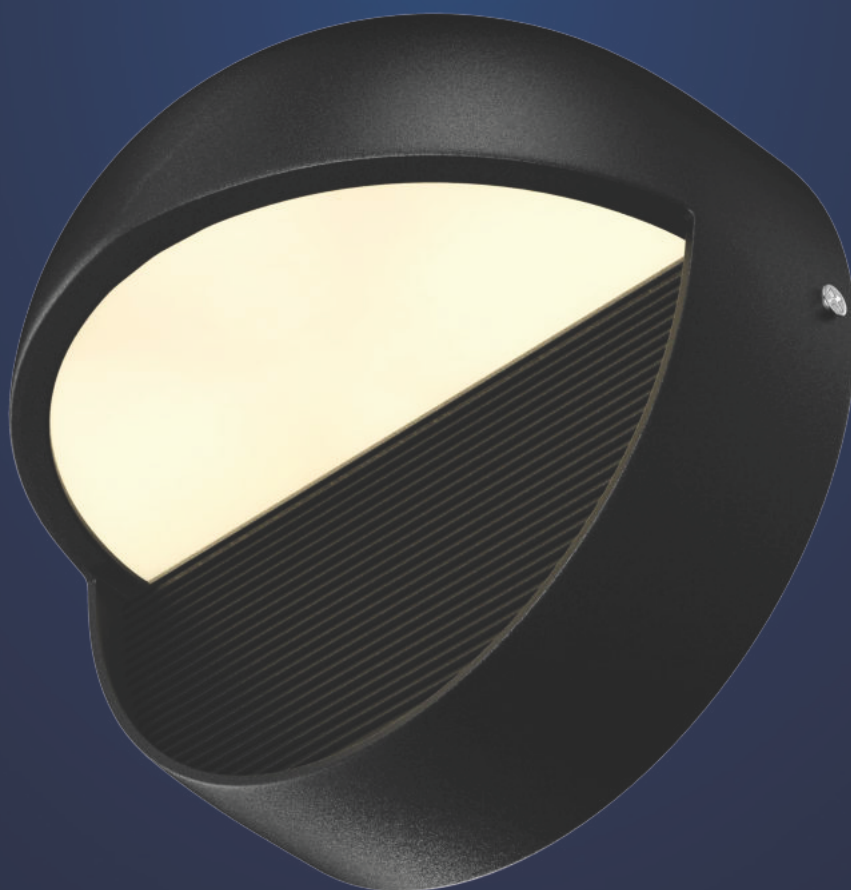




# Wall Sconce Lights



## LIGHT SPECIFICATIONS LED OUTDOOR WALL LIGHT

### SPECIFICATIONS



•WATTS	AC12W
•LUMENS	240LM
•COLOR TEMPERATURE	3000K
•CRI	RA>80
•VOLTAGE	120V TRIAC DIMMABLE
•IP RATED	ETL WET LOCATION
•OPERATING TEMPRATURE	-20~45°C
•MATERIAL	ALUMINUM+GLASS
•FINISH	TEXTURED BLACK
•MOUNTING	WALL MOUNTING
•SHADE SHAPE	HALF ROUND
•SHADE MATERIAL	GLASS
•SHADE COLOR	FROSTED GLASS
•WARRANTY	5-YEAR LIMITED
•FIXTURE SIZE	L6"xW6"xH4"
• CASE QUANTITY	12 PACK
• INNER CARTON SIZE	18.5x18.5x11cm
• NET WEIGHT	0.64KG
• GROSS WEIGHT	0.77KG
• MASTER CARTON SIZE	38.5x38.5x36.5cm
• NET WEIGHT	7.68KG
• GROSS WEIGHT	9.85KG

## LIGHT SPECIFICATIONS LED OUTDOOR WALL LIGHT SPECIFICATIONS



•WATTS	AC12W
•LUMENS	240LM
•COLOR TEMPERATURE	5000K
•CRI	RA>80
•VOLTAGE	120V TRIAC DIMMABLE
•IP RATED	ETL WET LOCATION
•OPERATING TEMPRATURE	-20~45°C
•MATERIAL	ALUMINUM+GLASS
•FINISH	TEXTURED BLACK
•MOUNTING	WALL MOUNTING
•SHADE SHAPE	HALF ROUND
•SHADE MATERIAL	GLASS
•SHADE COLOR	FROSTED GLASS
•WARRANTY	5-YEAR LIMITED
•FIXTURE SIZE	L6"xW6"xH4"
•CASE QUANTITY	12 PACK
•INNER CARTON SIZE	18.5x18.5x11cm
•NET WEIGHT	0.64KG
•GROSS WEIGHT	0.77KG
•MASTER CARTON SIZE	38.5x38.5x36.5cm
•NET WEIGHT	7.68KG
•GROSS WEIGHT	9.85KG