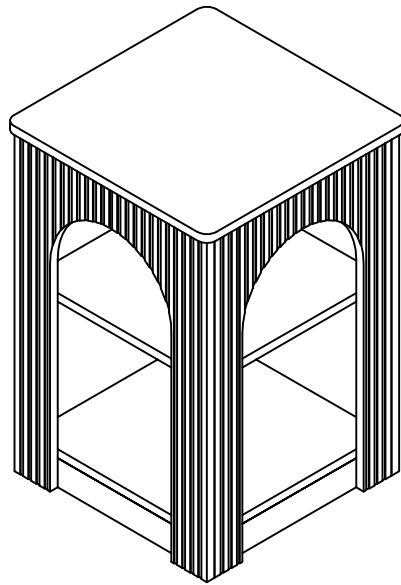


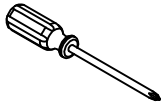
Installation Instruction



Assembling

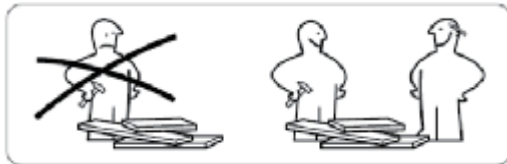
What you need

- Use the packaging carton as a working surface to prevent product damage during assembly
- Phillips head screwdriver



Weight Limitation

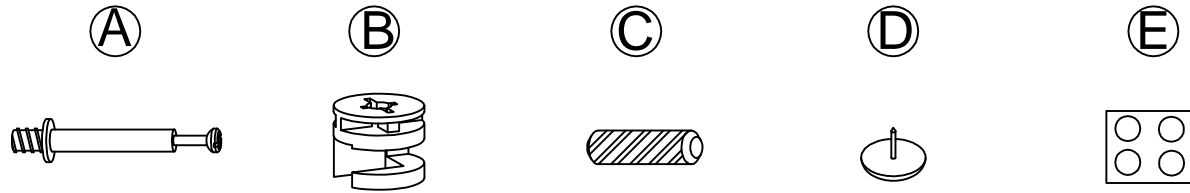
 **100** | **35**
lbs table top lbs per



What' included

Code Description	Qty
A Cam Bolt M6X35MM	44
B Cam Lock 15X9.5MM	44
C Wooden Dowel M8X30MM	16
D Foot nail	8
E Hole position sticker	44

The Hardwares



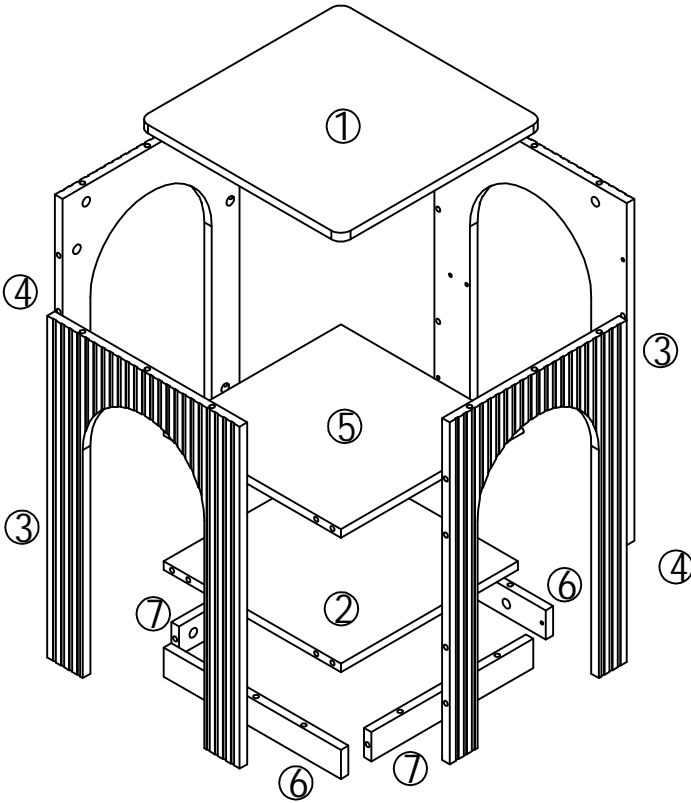
IMPORTANT:

1. Do not tighten bolts / screws completely until all bolts / screws are lined up and inserted into holes.
2. Do not over tighten screws and bolts to avoid stripping
3. Please use hand tools to assemble this product, you can also use power tools (please use power tools carefully)

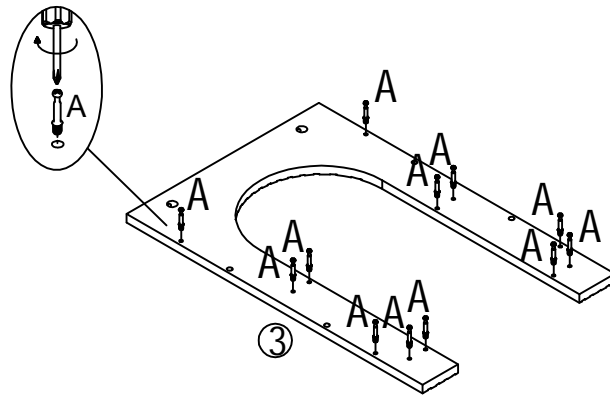
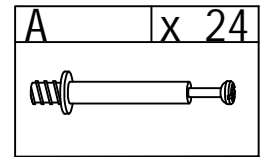
Included Accessories

Code	Description	Qty
1	Cabinet Top	1
2	Bottom Panel	1
3	Left and right Side Panel	2
4	front and rearSide Panel	2
5	Laminate Panel	1
6	Foot left and right connecting plate	2
7	Foot front and rear connecting plates	2

The Accessoriess

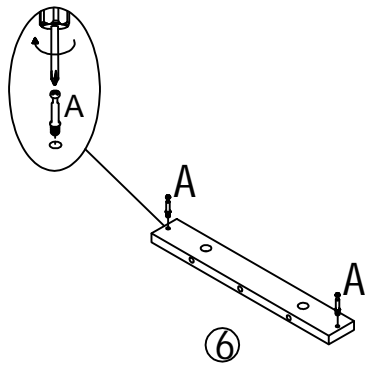
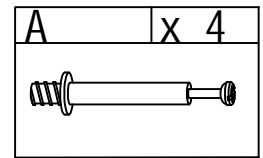


Step 1



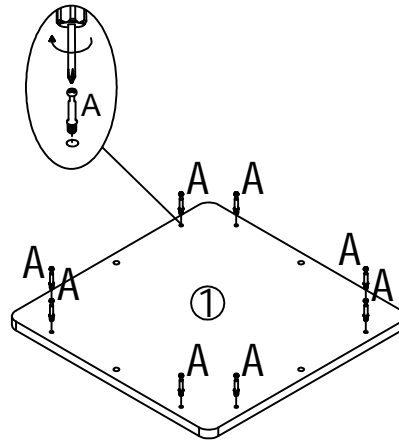
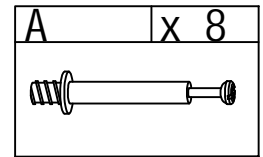
x 2

Step 2

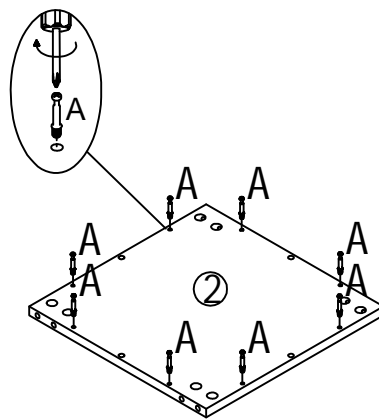
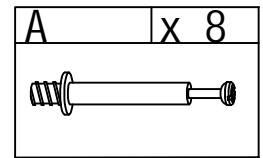


x 2

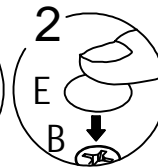
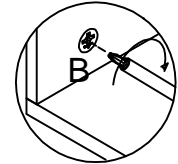
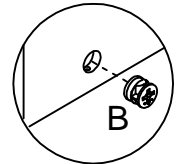
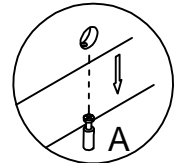
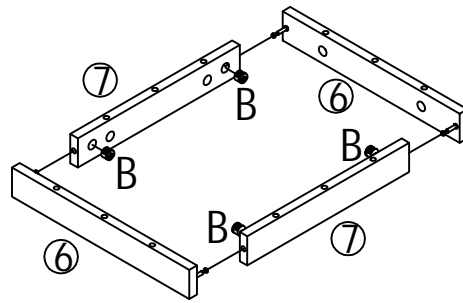
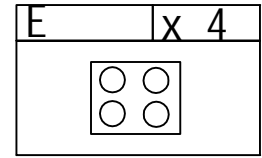
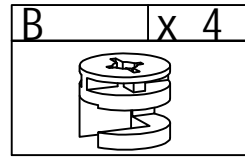
Step 3



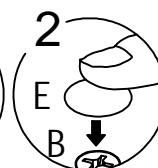
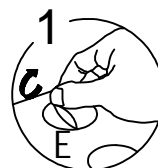
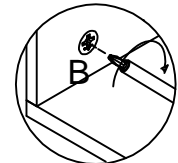
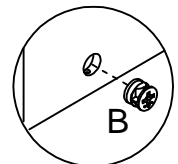
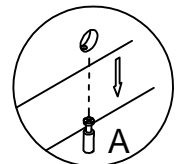
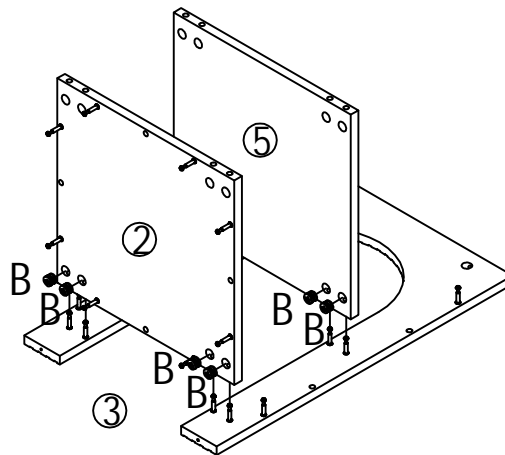
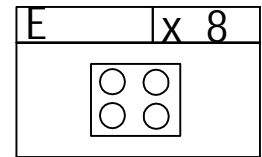
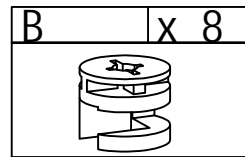
Step 4



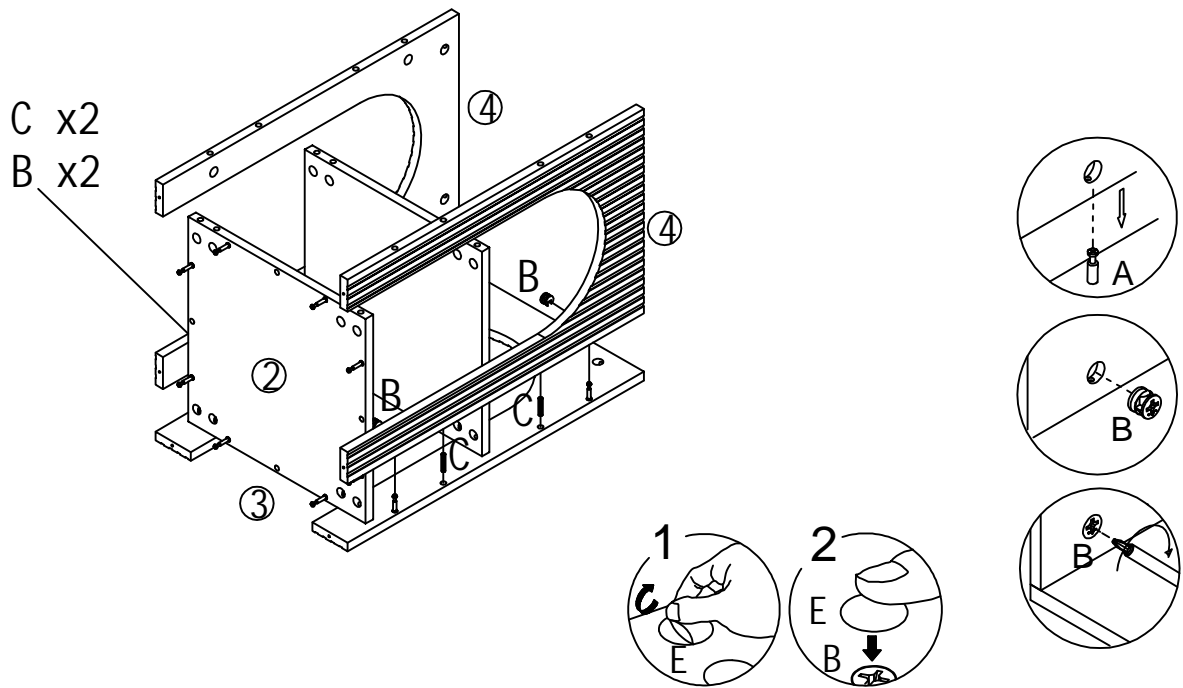
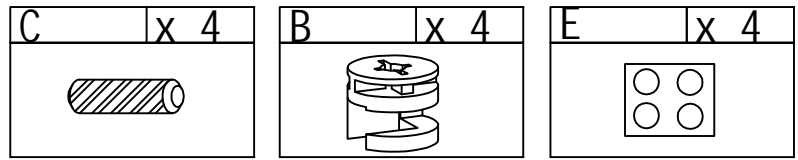
Step 5



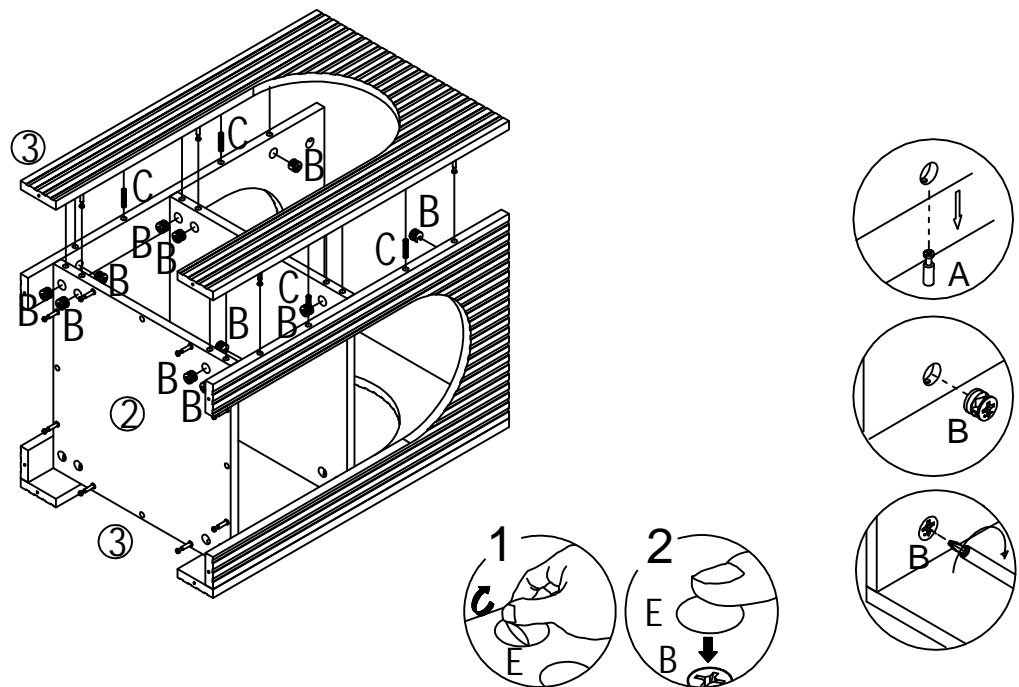
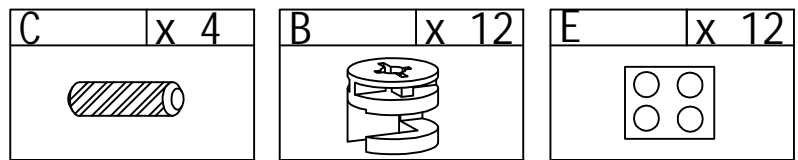
Step 6



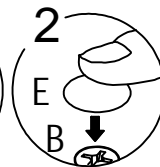
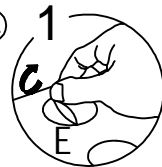
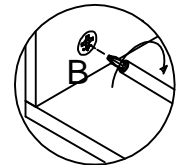
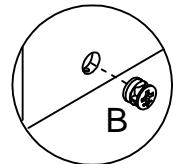
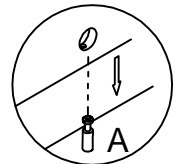
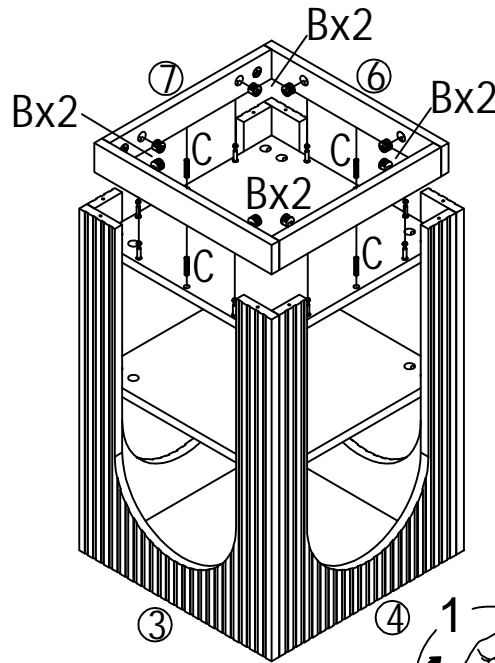
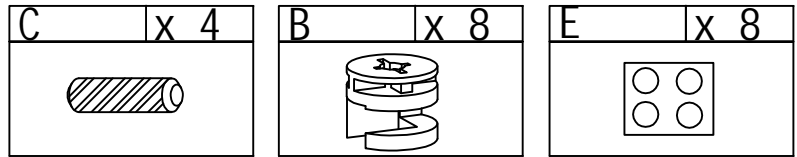
Step 7



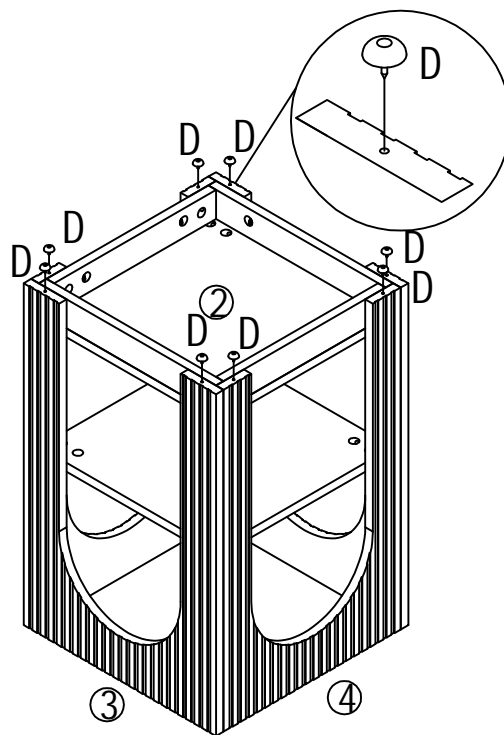
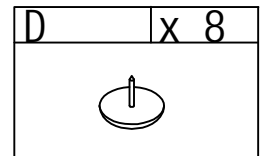
Step 8



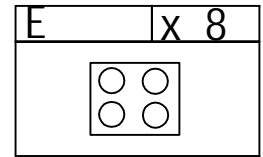
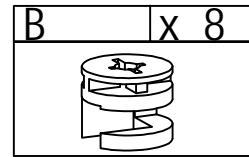
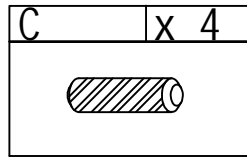
Step 9



Step 10



Step 11



Keep the lines on board 1 in the same direction as those on board 2 and 5.

