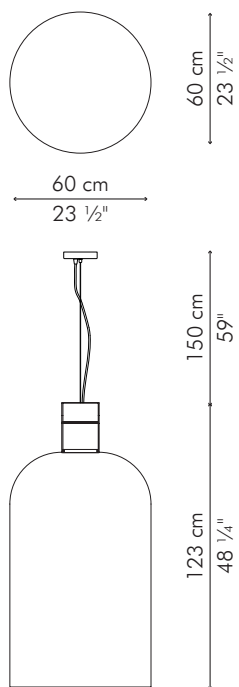





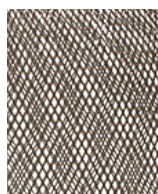
HANGING LAMP, large



-  3.5 kg / 8 lbs
-  11.5 kg / 25.5 lbs
-  0.51 m³

1 x 7 watts
 Surface mounted pre-wired lamp
 GU10
 110V 60Hz / 230V 50Hz

INDOOR aluminum



Peacock
 LHCR-BL-2347PCK



Toucan
 LHCR-BL-2347TN



Seascape
 LHCR-BL-2347SC