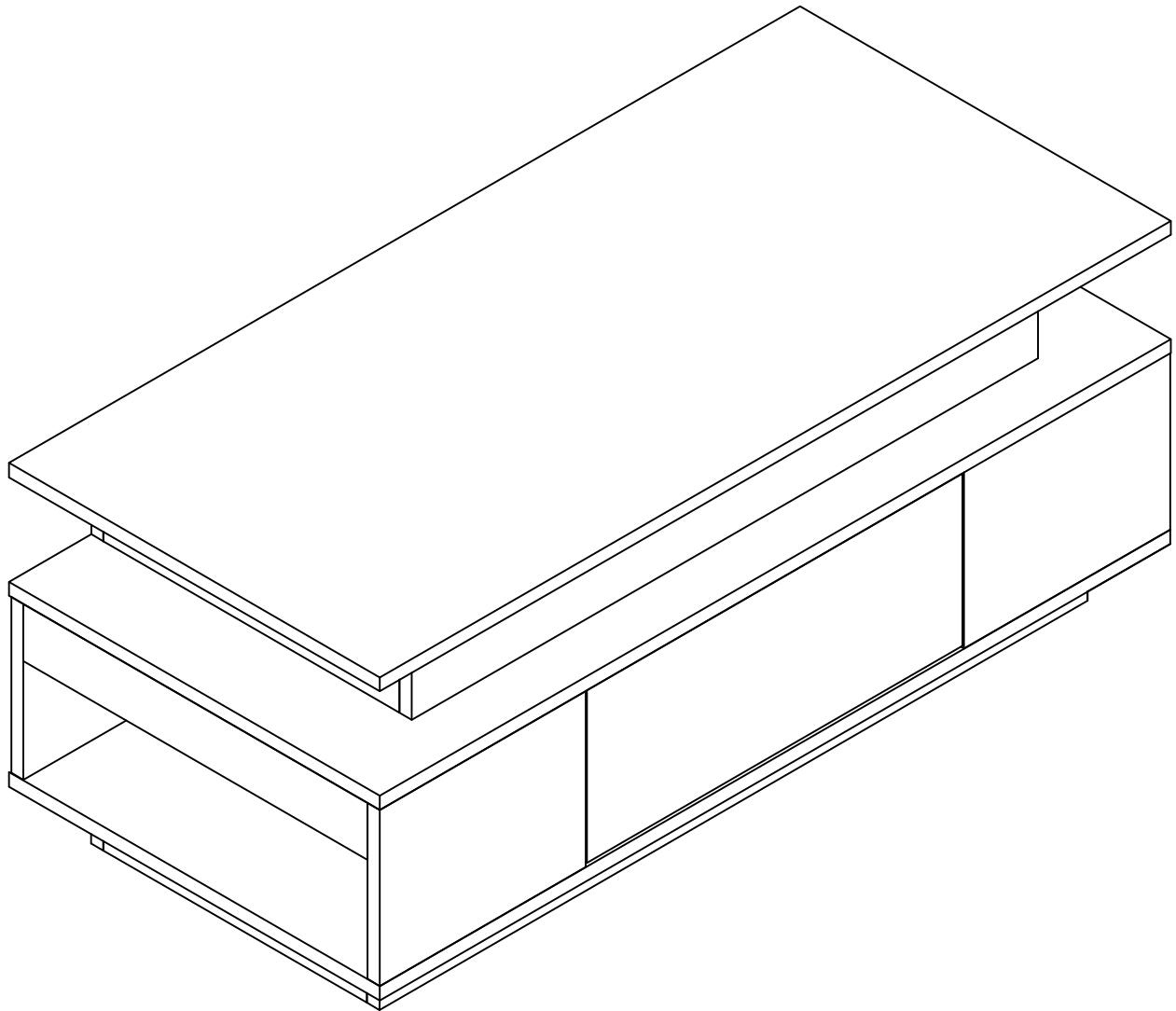


N625P294248

Product manual
Gebrauchsanweisung
Manuel du produit
Manual del producto
Manuale del prodotto

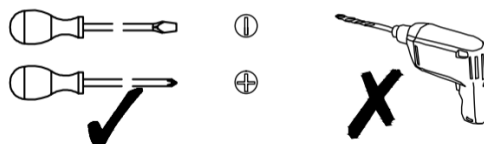


2PERS



45 MIN

Tool Required Not Provided



FR

Cet appareil,
ses cordons,
et batterie
se recyclent

À DÉPOSER
EN MAGASIN



À DÉPOSER
EN DÉCHÈTERIE



OU

Points de collecte sur www.quefairedemesdechets.fr
Privilégiez la réparation ou le don de votre appareil !



[DE]

Warnung: Lesen Sie diese Anleitung vor dem Zusammenbau bitte vollständig durch. Überprüfen Sie, ob Sie alle auf den Seiten aufgeführten Komponenten und Werkzeuge haben. Bewahren Sie die Anleitung zum späteren Nachschlagen auf. Teile des Zusammenbaus lassen sich mit 2 Personen leichter durchführen. Suchen Sie bei Bedarf professionelle Hilfe.

Warnung: Legen Sie alle Teile auf eine ebene Fläche. Legen Sie eine weiche Decke oder Ähnliches darunter, um sie vor Kratzern oder Flecken zu schützen. Vermeiden Sie es, Komponenten über den Boden zu ziehen oder zu schieben.

Warnung: Überprüfen Sie regelmäßig alle Beschläge und Befestigungen, um sicherzustellen, dass sie sicher sind und um Unfälle zu vermeiden. Wenn Teile fehlen, kaputt, beschädigt oder abgenutzt sind, verwenden Sie das Produkt nicht weiter, bis es mit vom Hersteller autorisierten Teilen repariert wurde.

Warnung: Lassen Sie Kinder nicht auf die Möbel klettern, da dies zum Umkippen und zu schweren Verletzungen führen kann. Bauen Sie die Möbel außerhalb der Reichweite von Kindern zusammen.

Warnung: Stellen Sie die Möbel nicht in die Nähe von Feuerquellen oder heißen Gegenständen, um Brandgefahr zu vermeiden.

Warnung: Reinigen Sie die Möbel mit einem feuchten Tuch oder Alkohol. Verwenden Sie keine Reinigungsmittel mit ätzenden Chemikalien.

[EN]

Warning: Please read these instructions fully before starting assembly. Check you have all the components and tools listed on pages. Keep the instructions for later reference. Parts of the assembly will be easier with 2 people. Seek professional assistance if necessary.

Warning: Please place all parts on a flat surface. Place a soft blanket or similar underneath to protect against scratches or stains. Avoid dragging or sliding components across the floor.

Warning: Regularly check all fittings and fastenings to ensure they are secure and to prevent accidents. If any parts are missing, broken, damaged, or worn, discontinue use of the product until repairs have been made using factory authorized parts.

Warning: Do not allow children to climb on the furniture as this may result in tipping and serious personal injury. Assemble the furniture away from the reach of children.

Warning: Do not place furniture close to fire sources or high-temperature objects to avoid the risk of fire. Do not place furniture in damp environments to prevent material damage.

Warning: Clean furniture with a damp cloth or alcohol, avoid using cleaning agents containing corrosive chemicals.

[FR]

Avertissement : Veuillez lire attentivement ces instructions avant de commencer l'assemblage. Vérifiez que vous disposez de tous les composants et outils répertoriés sur les pages. Conservez les instructions pour référence ultérieure. Certaines parties de l'assemblage seront plus faciles à 2 personnes. Demandez l'aide d'un professionnel si nécessaire.

Avertissement : Veuillez placer toutes les pièces sur une surface plane. Placez une couverture douce ou similaire en dessous pour les protéger des rayures ou des taches. Évitez de faire glisser les composants sur le sol.

Avertissement : Vérifiez régulièrement tous les raccords et fixations pour vous assurer qu'ils sont bien fixés et pour éviter les accidents. Si des pièces manquent, sont cassées, endommagées ou usées, cessez d'utiliser le produit jusqu'à ce que des réparations aient été effectuées à l'aide de pièces autorisées par l'usine.

Avertissement : Ne laissez pas les enfants grimper sur les meubles car cela pourrait entraîner un basculement et des blessures graves. Assemblez les meubles hors de portée des enfants.

Avertissement : Ne placez pas les meubles à proximité de sources de feu ou d'objets à haute température pour éviter tout risque d'incendie.

Avertissement : Nettoyez les meubles avec un chiffon humide ou de l'alcool, évitez d'utiliser des produits de nettoyage contenant des produits chimiques corrosifs.

[IT]

Attenzione: leggere attentamente queste istruzioni prima di iniziare il montaggio. Verificare di avere tutti i componenti e gli strumenti elencati nelle pagine. Conservare le istruzioni per riferimento futuro. Alcune parti del montaggio saranno più facili con 2 persone. Se necessario, chiedere assistenza professionale.

Attenzione: posizionare tutte le parti su una superficie piana. Posizionare una coperta morbida o simile sotto per proteggere da graffi o macchie. Evitare di trascinare o far scivolare i componenti sul pavimento.

Attenzione: controllare regolarmente tutti i raccordi e i dispositivi di fissaggio per assicurarsi che siano sicuri e per prevenire incidenti. Se alcune parti sono mancanti, rotte, danneggiate o usurate, interrompere l'uso del prodotto fino a quando non siano state eseguite le riparazioni utilizzando parti autorizzate dalla fabbrica.

Attenzione: non consentire ai bambini di arrampicarsi sui mobili poiché ciò potrebbe causare ribaltamenti e gravi lesioni personali. Montare i mobili lontano dalla portata dei bambini.

Attenzione: non posizionare i mobili vicino a fonti di fuoco o oggetti ad alta temperatura per evitare il rischio di incendio

Attenzione: pulire i mobili con un panno umido o alcol, evitare di utilizzare detergenti contenenti sostanze chimiche corrosive.

[ES]

Advertencia: Lea estas instrucciones completamente antes de comenzar el montaje. Compruebe que tiene todos los componentes y herramientas que se enumeran en las páginas. Conserve las instrucciones para consultarlas más adelante. El montaje de algunas partes será más sencillo con 2 personas. Busque ayuda profesional si es necesario.

Advertencia: Coloque todas las piezas sobre una superficie plana. Coloque una manta suave o algo similar debajo para protegerlas de rayones o manchas. Evite arrastrar o deslizar los componentes por el piso.

Advertencia: Verifique regularmente todos los accesorios y fijaciones para asegurarse de que estén seguros y evitar accidentes. Si falta alguna pieza, está rota, dañada o desgastada, deje de usar el producto hasta que se hayan realizado las reparaciones con piezas autorizadas de fábrica.

Advertencia: No permita que los niños se suban a los muebles, ya que esto puede provocar que se vuelquen y lesiones personales graves. Monte los muebles fuera del alcance de los niños.

Advertencia: No coloque los muebles cerca de fuentes de fuego u objetos de alta temperatura para evitar el riesgo de incendio.

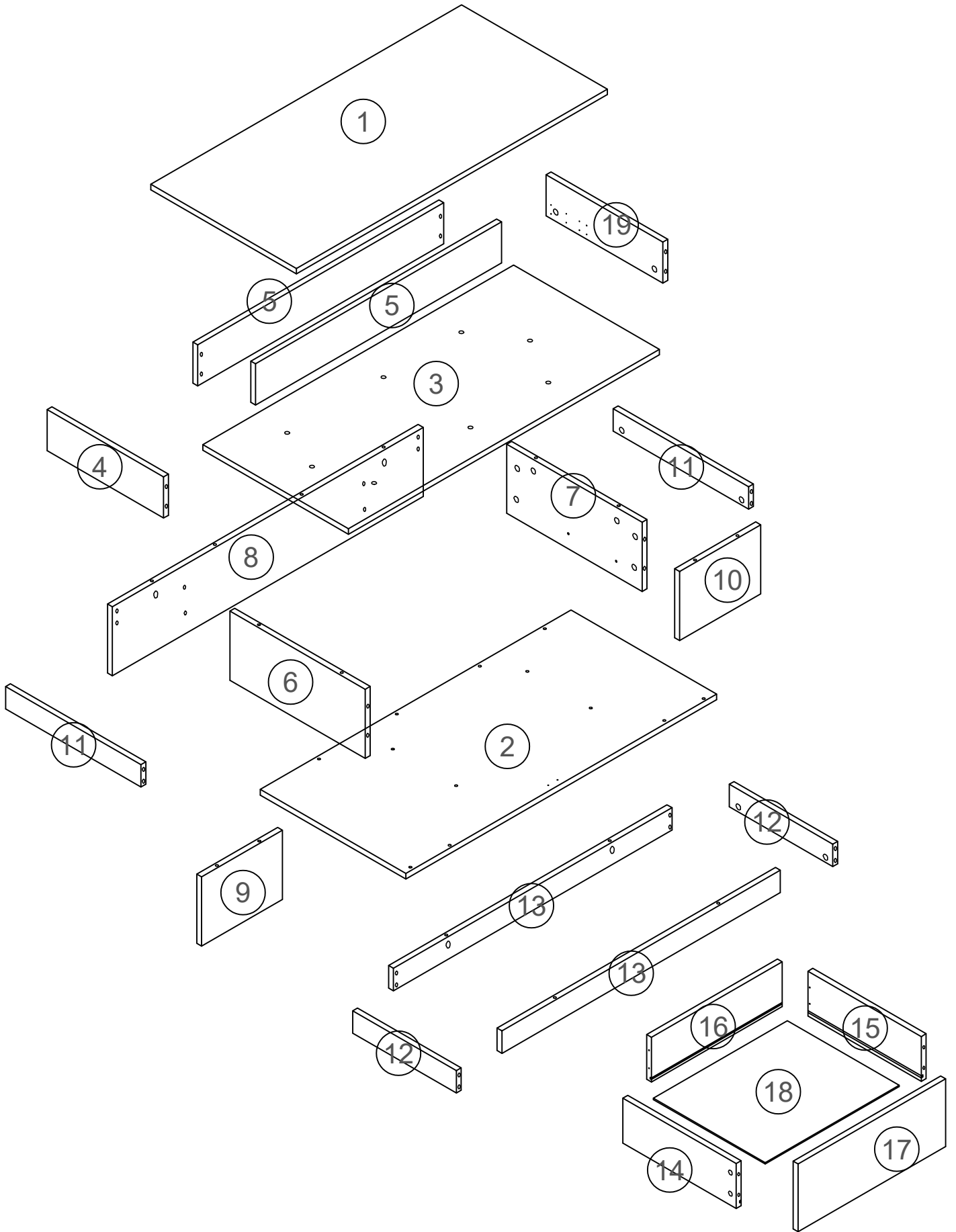
Advertencia: Limpie los muebles con un paño húmedo o alcohol, evite usar agentes de limpieza que contengan químicos corrosivos.

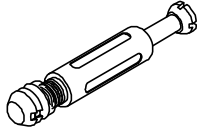

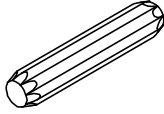
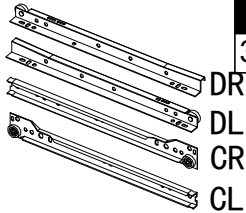

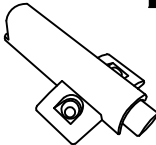
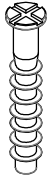
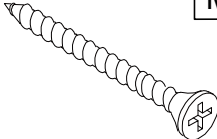
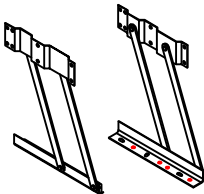
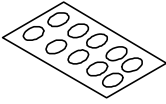
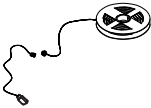
BOX
1-1

SKU:N625P294248

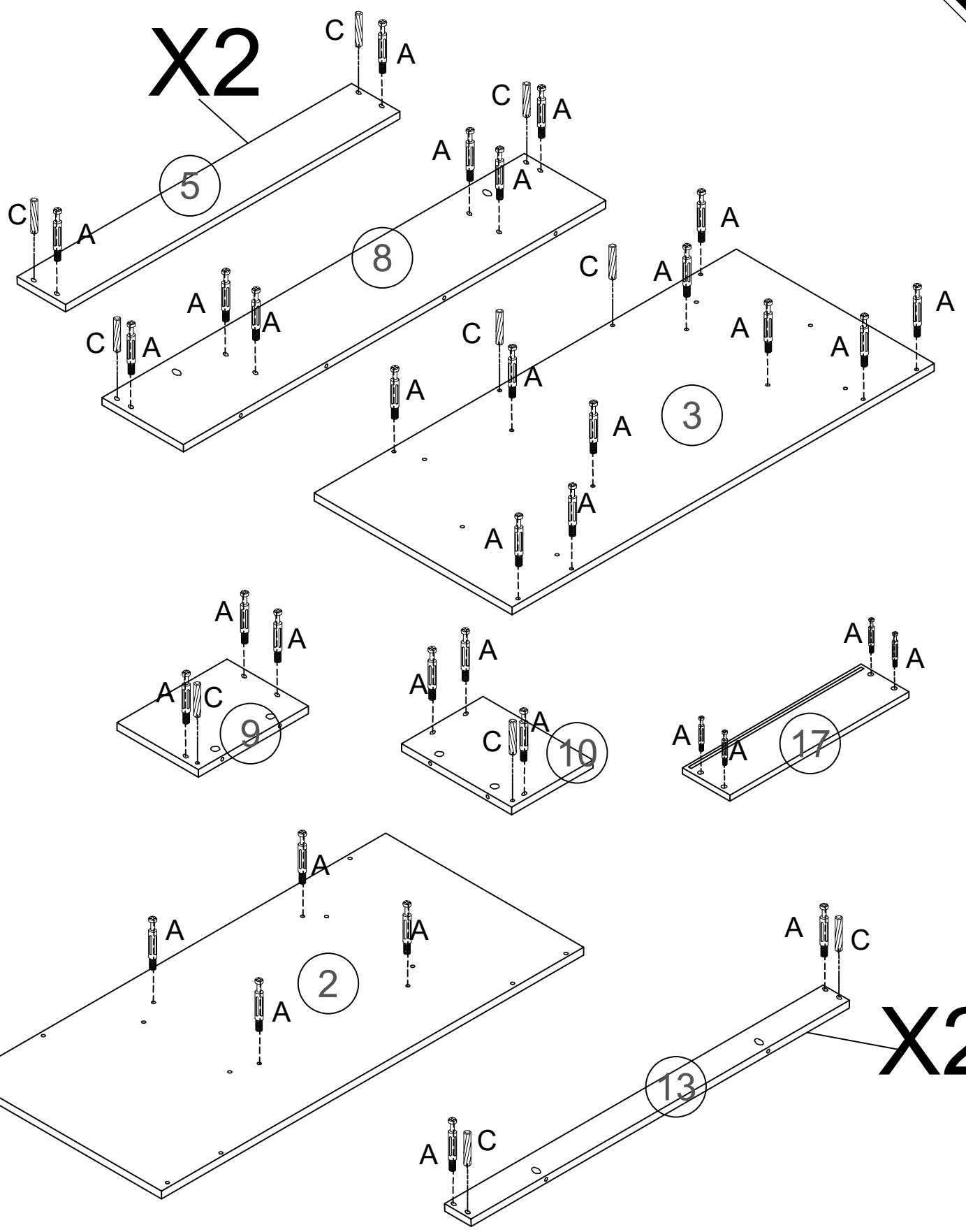
| | |
|----|-----------------|
| 1 | 960*450*15=1PC |
| 2 | 960*450*15=1PC |
| 3 | 960*450*15=1PC |
| 4 | 360*110*15=1PC |
| 5 | 760*110*15=2PCS |
| 6 | 185*418*15=1PC |
| 7 | 185*418*15=1PC |
| 8 | 960*185*15=1PC |
| 9 | 250*185*15=1PC |
| 10 | 250*185*15=1PC |
| 11 | 418*60*15=2PCS |
| 12 | 320*60*15=2PCS |
| 13 | 860*60*15=2PCS |
| 14 | 350*120*15=1PC |
| 15 | 350*120*15=1PC |
| 16 | 404*120*15=1PC |
| 17 | 456*181*15=1PC |
| 18 | 414*345*3=1PC |
| 19 | 360*110*15=1PC |



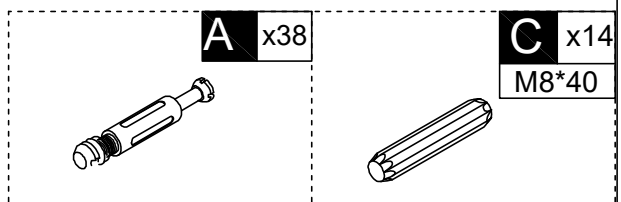
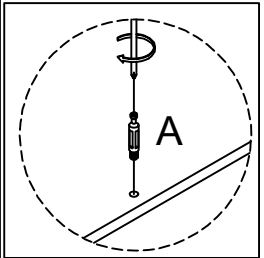


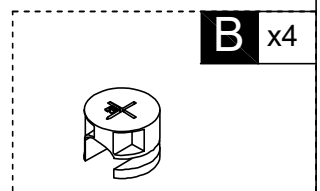
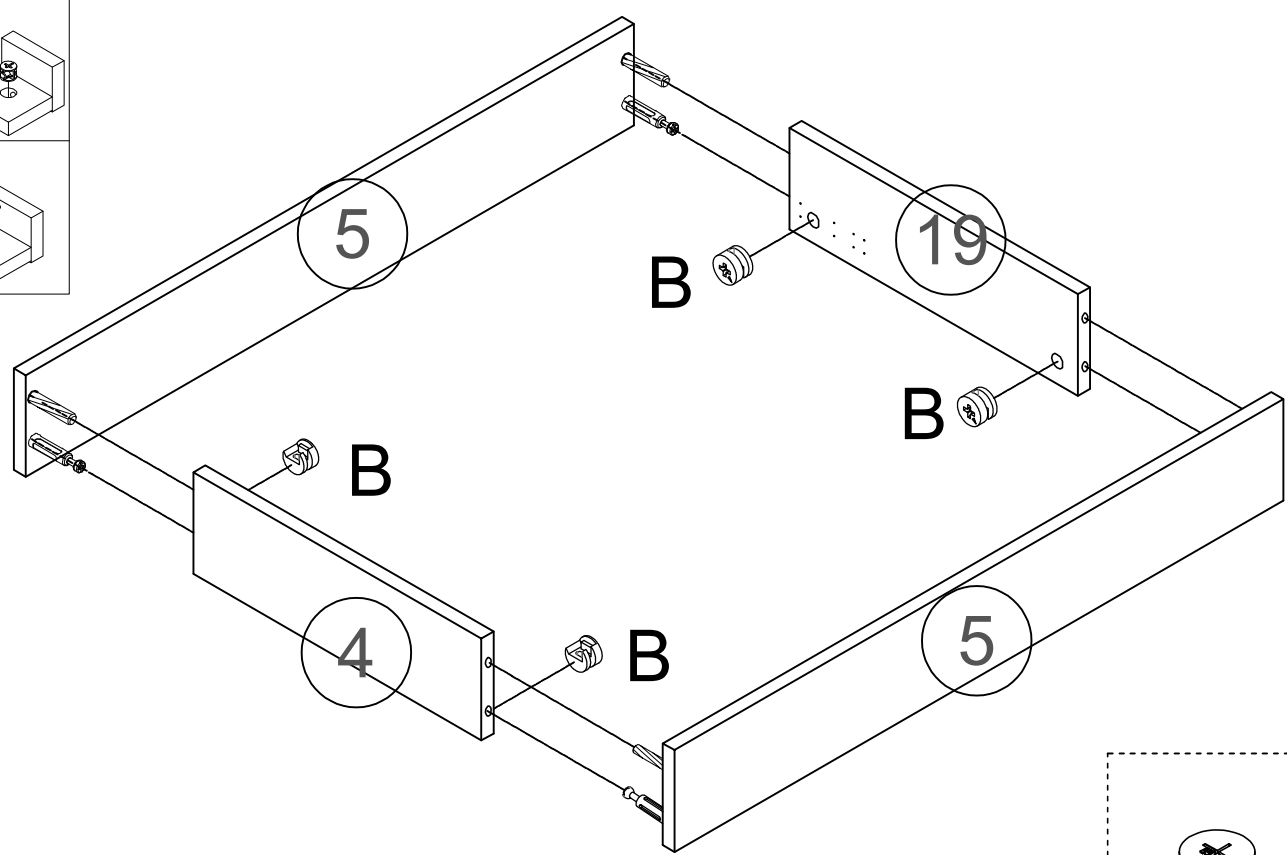
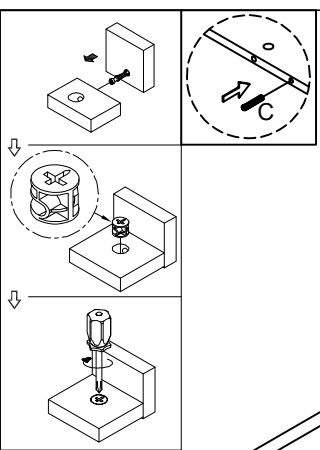
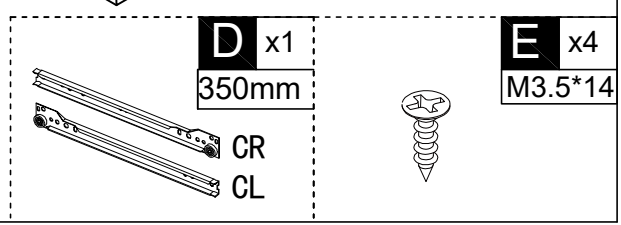
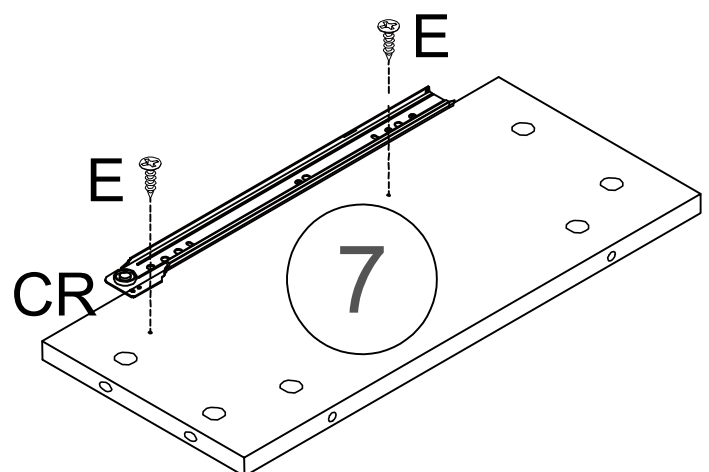
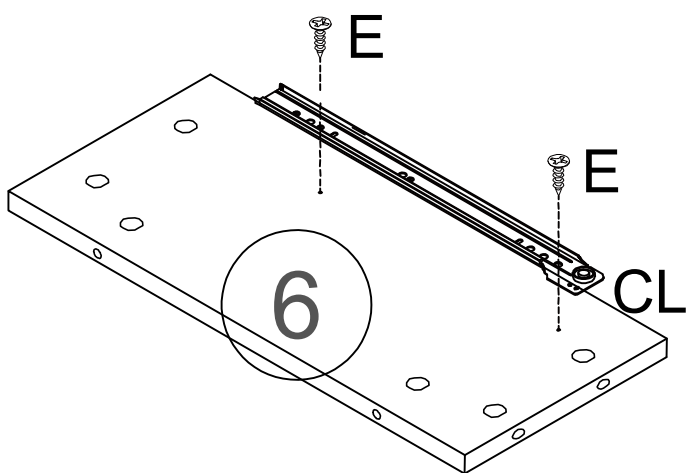
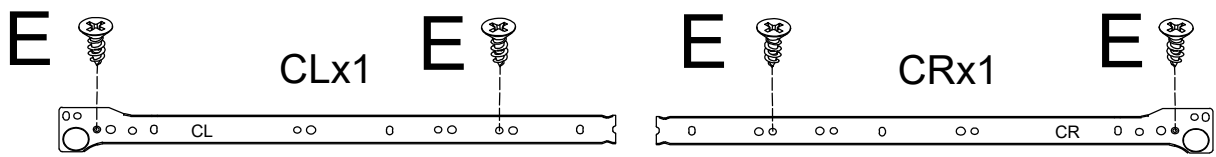
| | | |
|--|---|---|
|  <p>A x38 +2(spare)</p> |  <p>B x38 +2(spare)</p> |  <p>C x18 M8*40 +2(spare)</p> |
|  <p>D x1 350mm DR DL CR CL</p> |  <p>E x34 M3.5*14 +2(spare)</p> |  <p>F x 1</p> |
|  <p>G x16 M7*50</p> |  <p>H x 4 M3.5*35</p> |  <p>I x 1</p> |
|  <p>J x38</p> |  <p>K x1 1540mm</p> | |

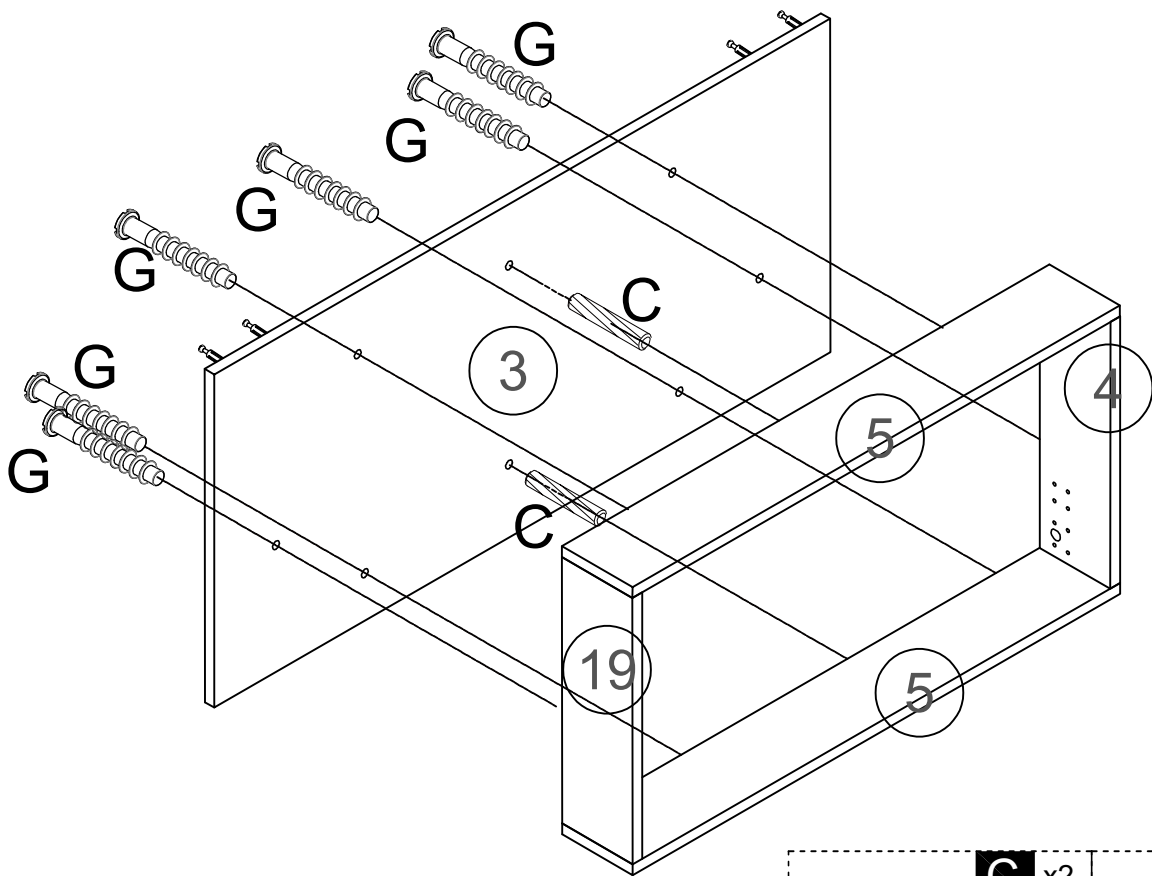
X2



X2

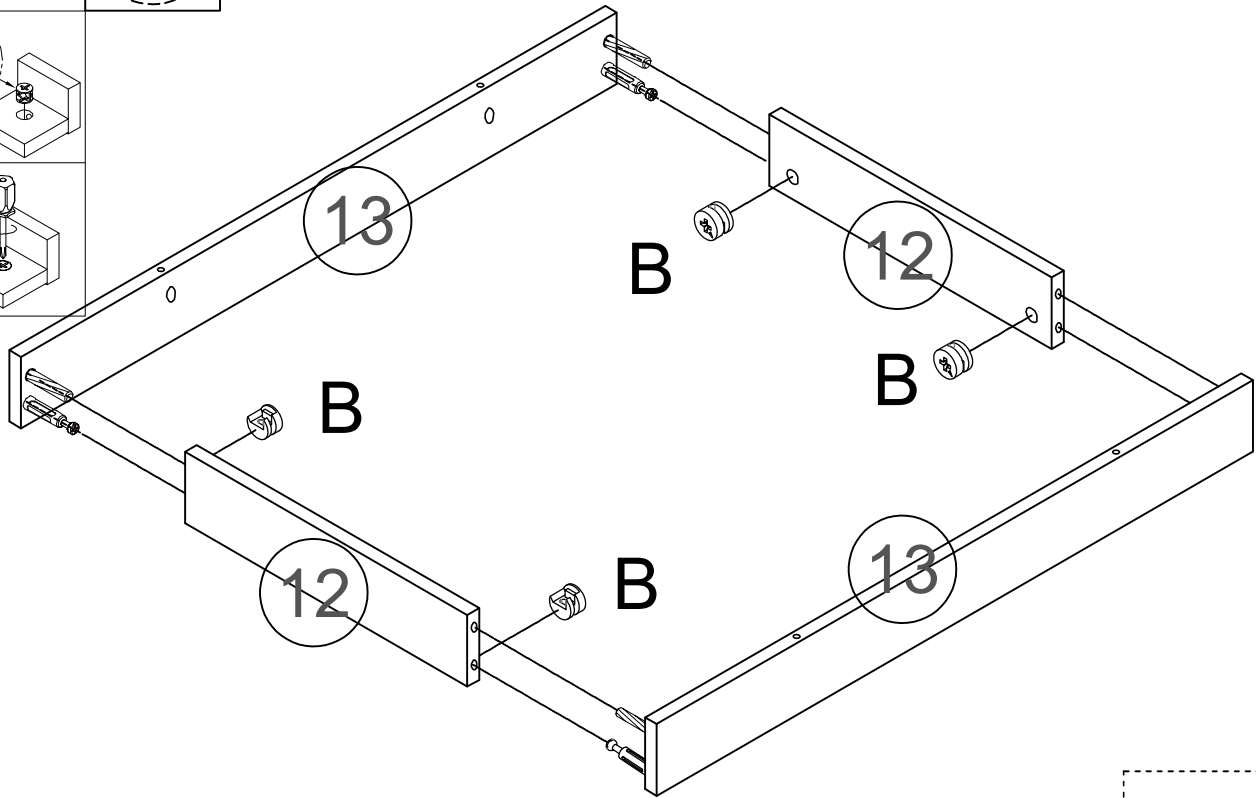
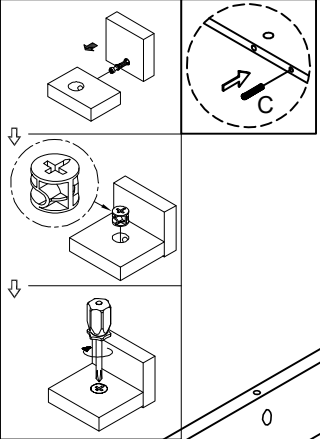
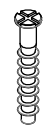
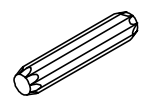






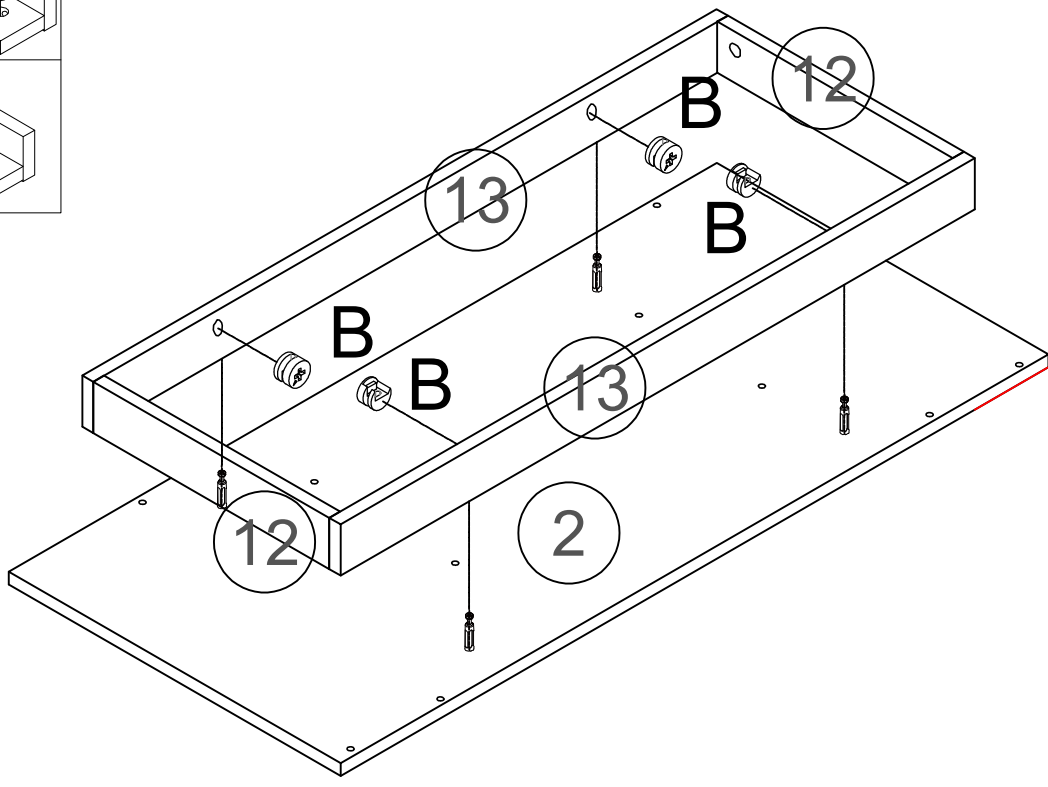
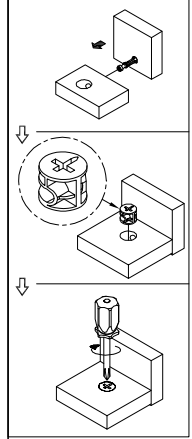
C x2
M8*40

G x6
M7*50

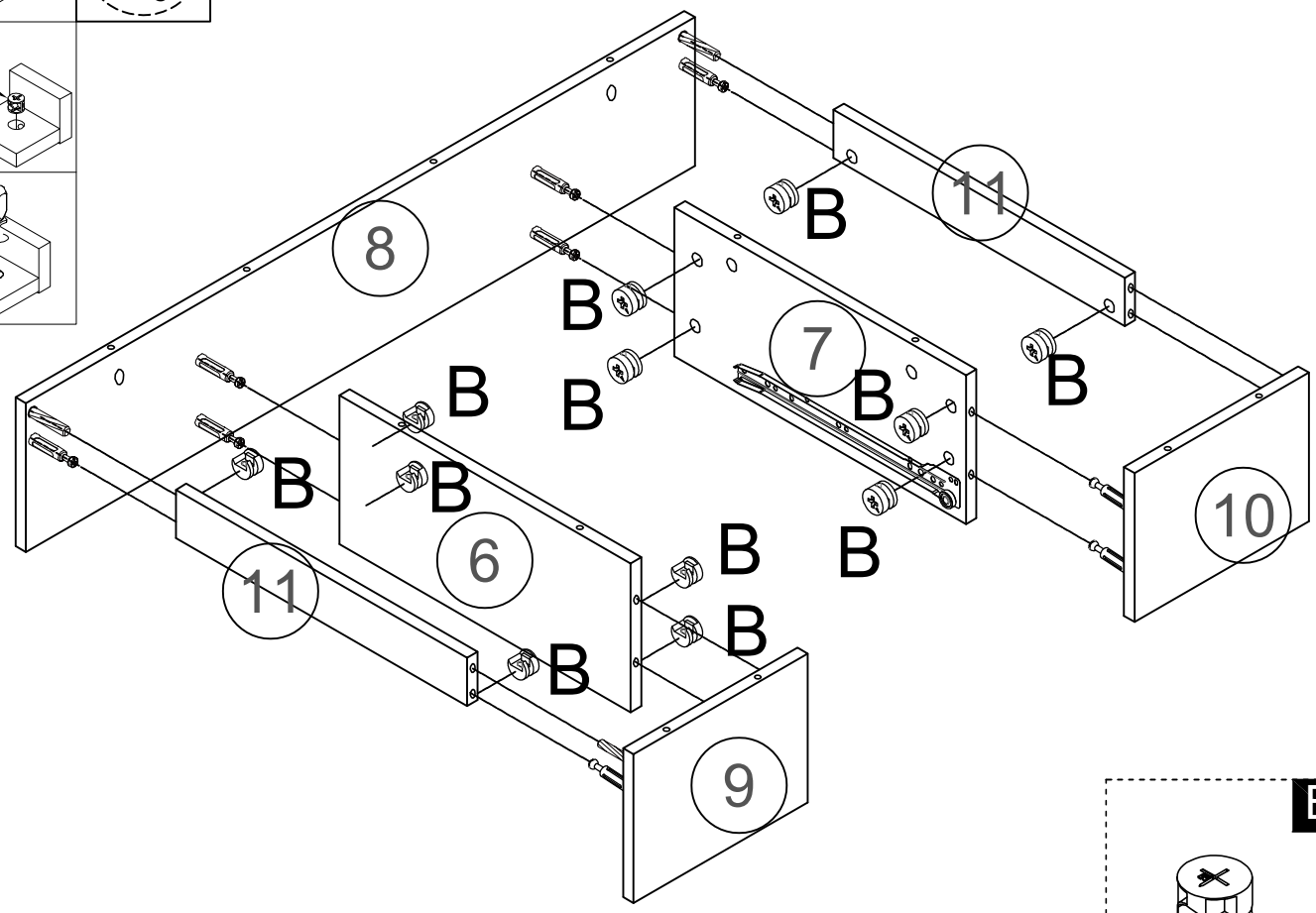
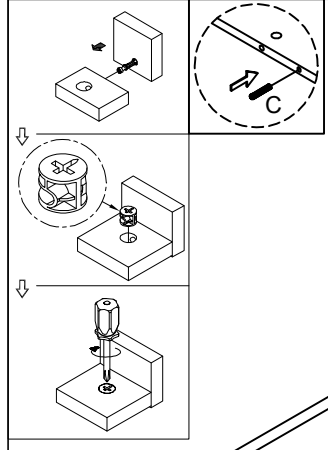


B x4



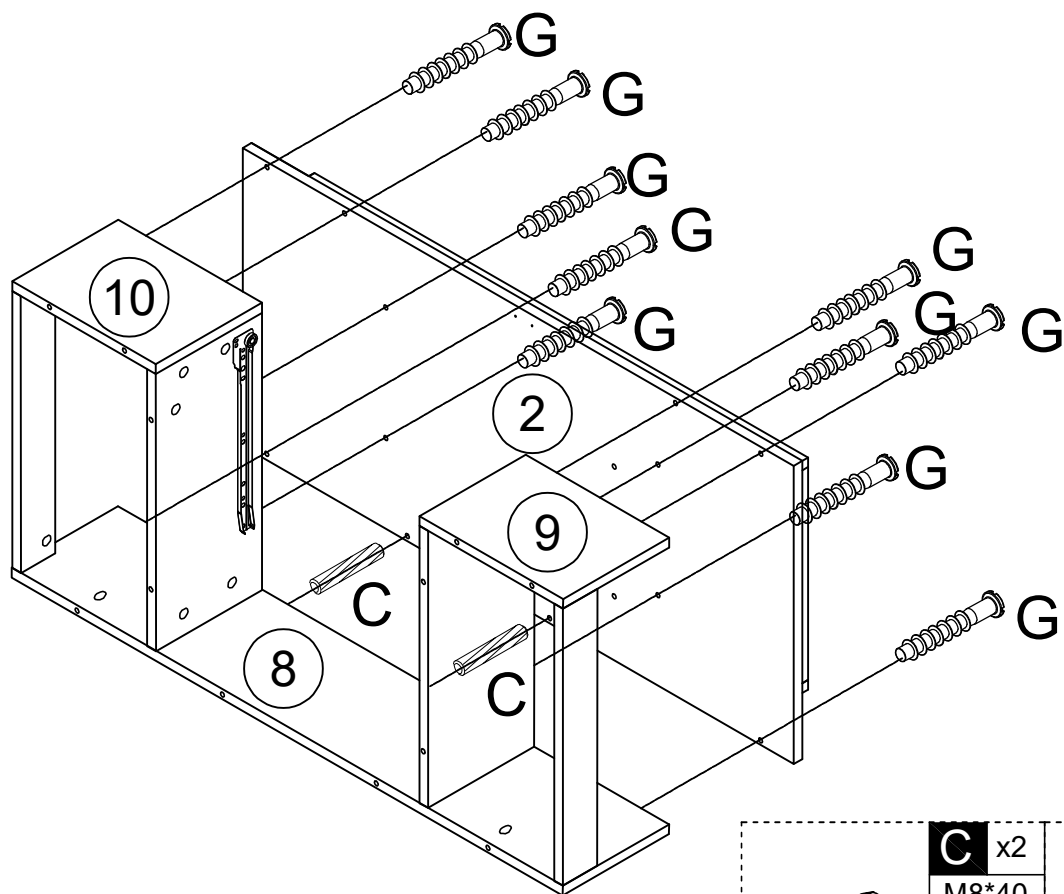


B x4



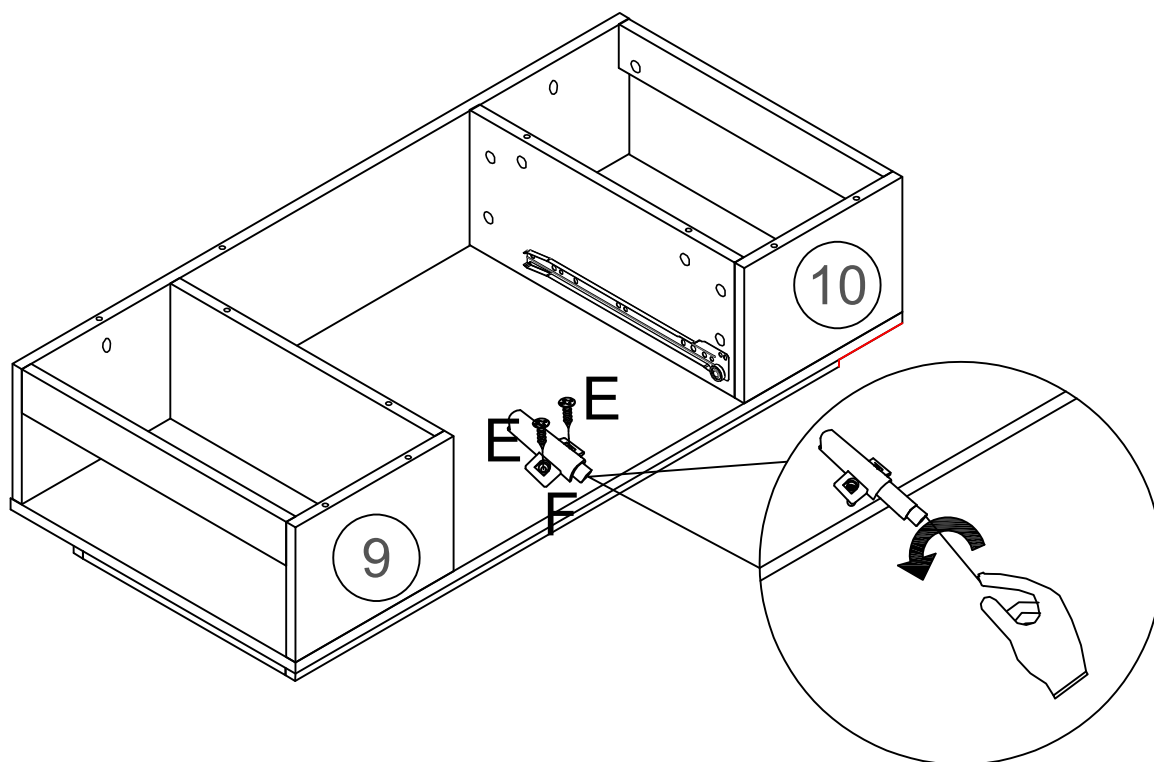
B x12





C x2
M8*40

G x10
M7*50



E x2
M3.5*14

F x1

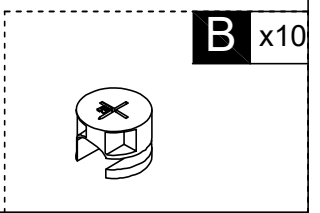
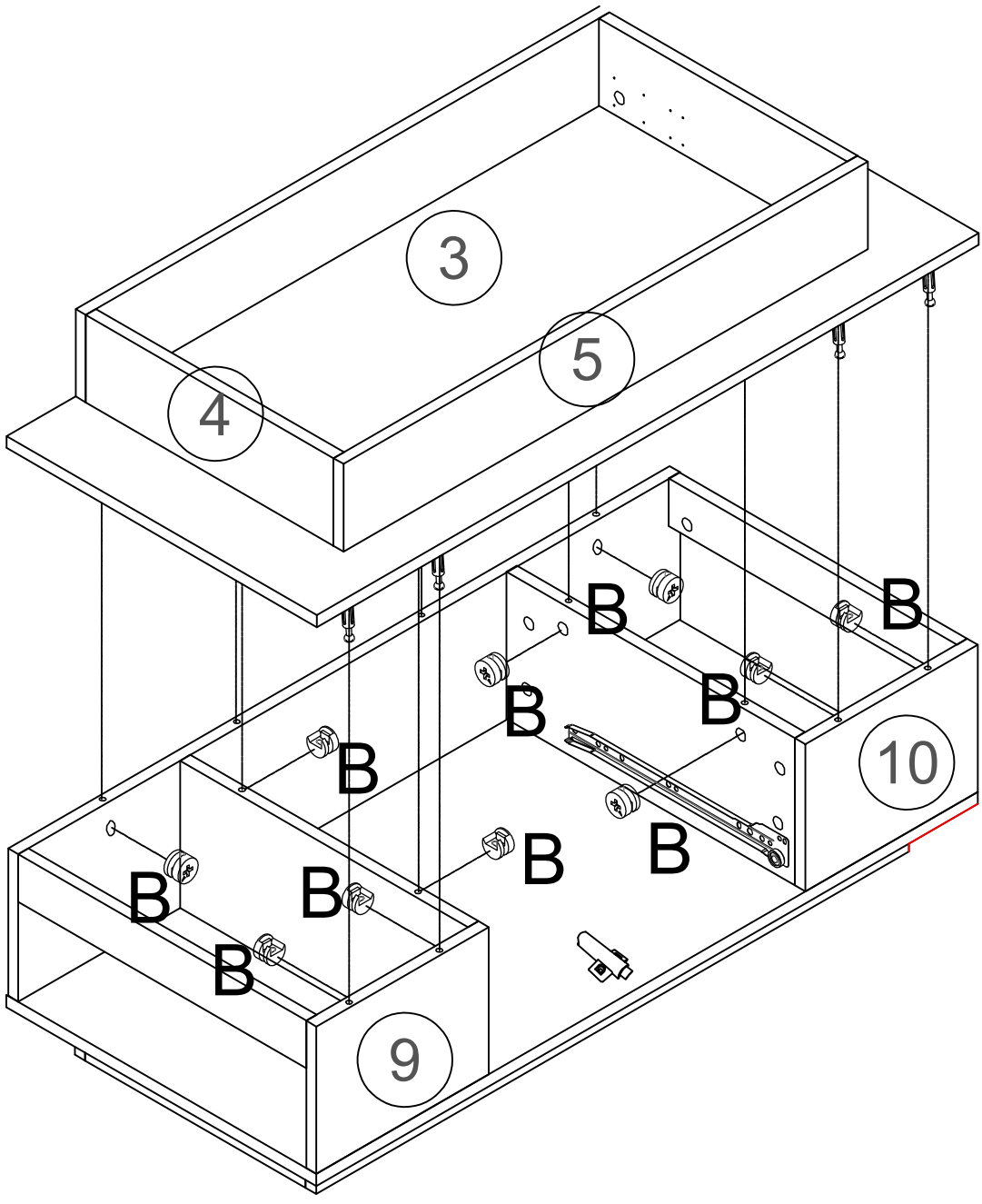
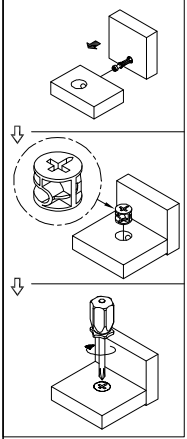
EN: Note :If the drawer does not open and closes smoothly, you can rotate and adjust this part.

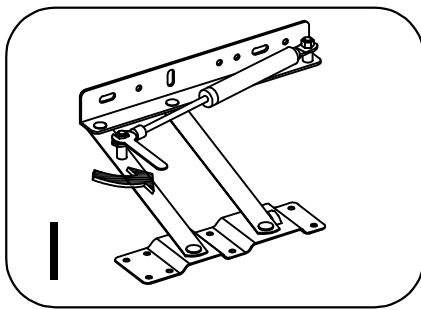
DE: Hinweis: Wenn sich die Schublade nicht reibungslos öffnet und schließt, können Sie diesen Teil drehen und justieren.

FR: Remarque :Si le tiroir ne s'ouvre et ne se ferme pas en douceur, vous pouvez faire pivoter et ajuster cette partie.

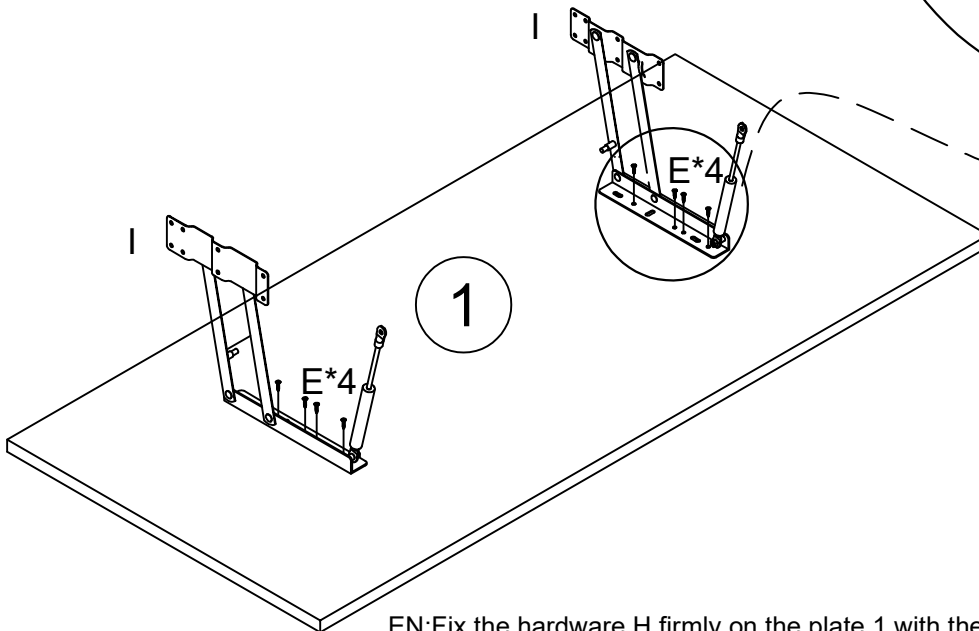
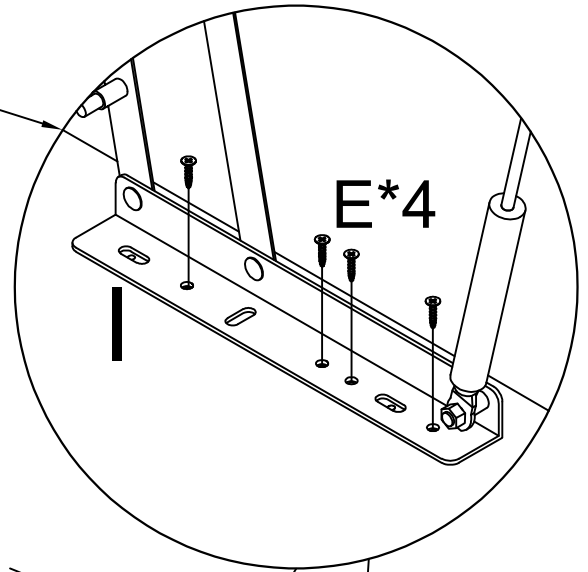
ES: Nota: Si el cajón no se abre ni se cierra sin problemas, puedes girar y ajustar esta parte.

IT: Nota: se il cassetto non si apre e non si chiude senza intoppi, puoi ruotare e regolare questa parte.



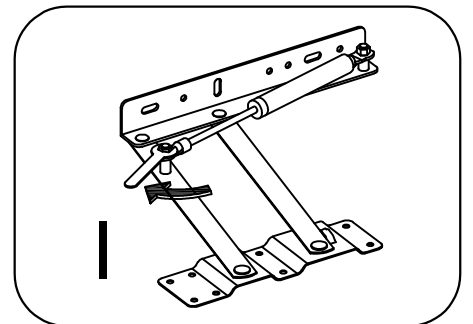


EN: Loosen the screws here, as shown.
 DE: Lösen Sie hier, wie gezeigt, die Schrauben.
 FR: Desserrez les vis ici, comme indiqué.
 IT: Allentare le viti qui, come mostrato.
 ES: Afloje los tornillos aquí, como se muestra.

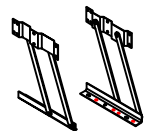


EN: Fix the hardware H firmly on the plate 1 with the self-tapping thread E,
 DE: Befestigen Sie den Beschlag I mit dem selbstschneidenden Gewinde E fest auf der
 Platte 1.
 FR: Fixer fermement la quincaillerie I sur la plaque 1 avec le filetage autotaraudeur E,
 IT: Fissare saldamente la ferramenta I sulla piastra 1 con la filettatura autofilettante E,
 ES: Fije el hardware I firmemente en la placa 1 con la rosca autorroscante E,

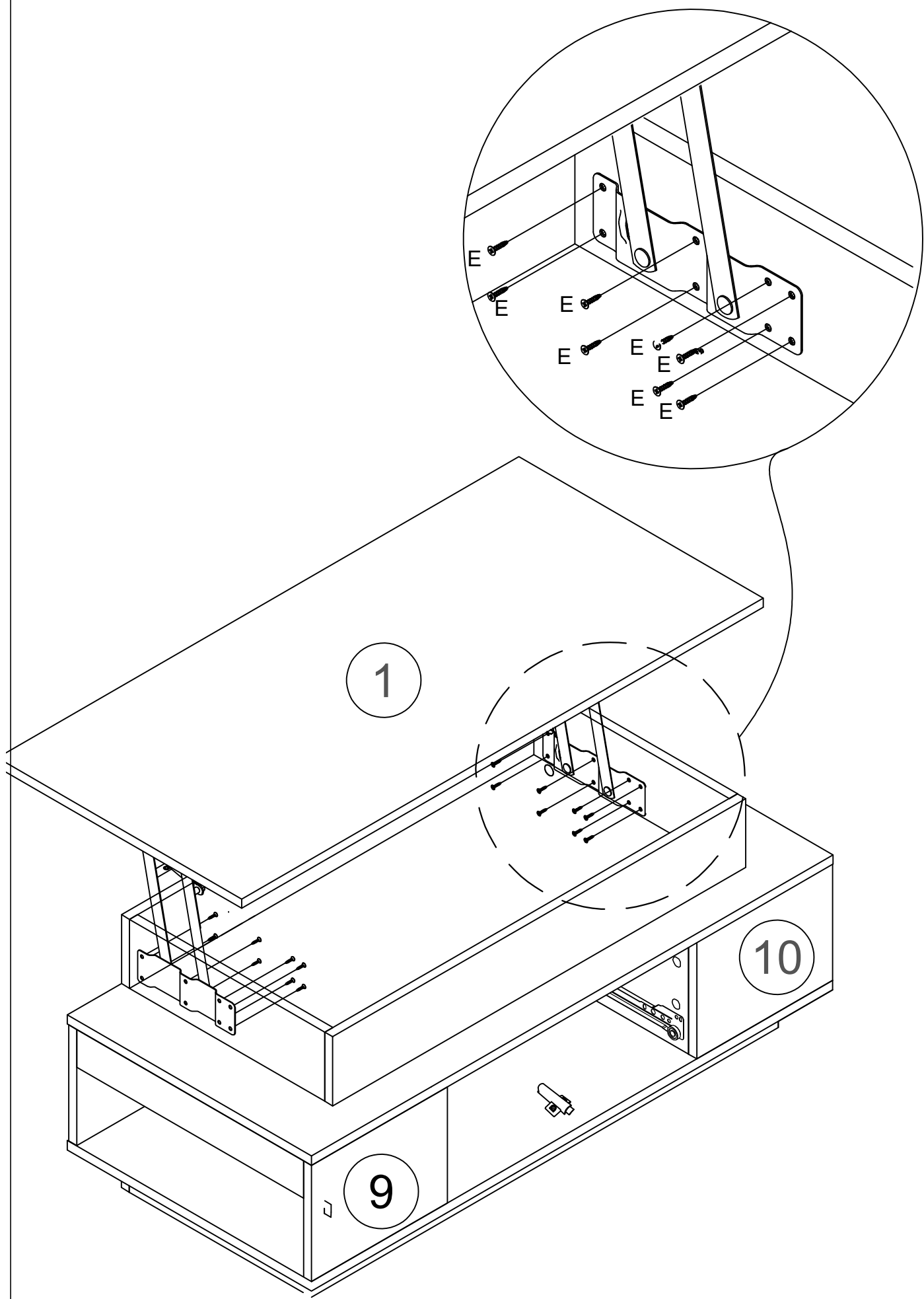
EN: Tighten the screws on hardware I here.
 DE: Dabei die Schrauben am Beschlag I festziehen.
 FR: Serrez les vis sur le matériel I ici.
 IT: Stringere le viti sull'hardware I qui.
 ES: Apriete los tornillos en el hardware I aquí.



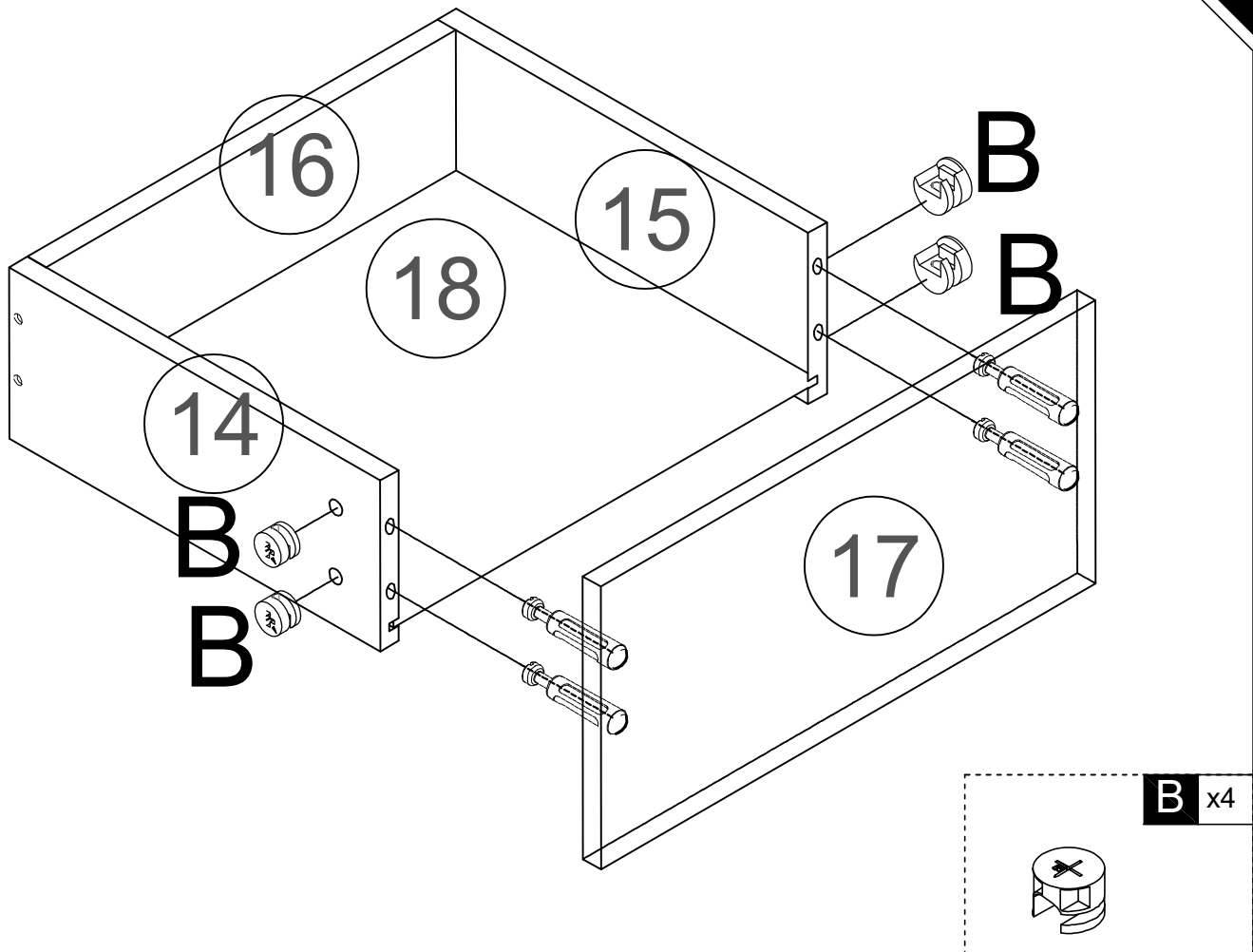
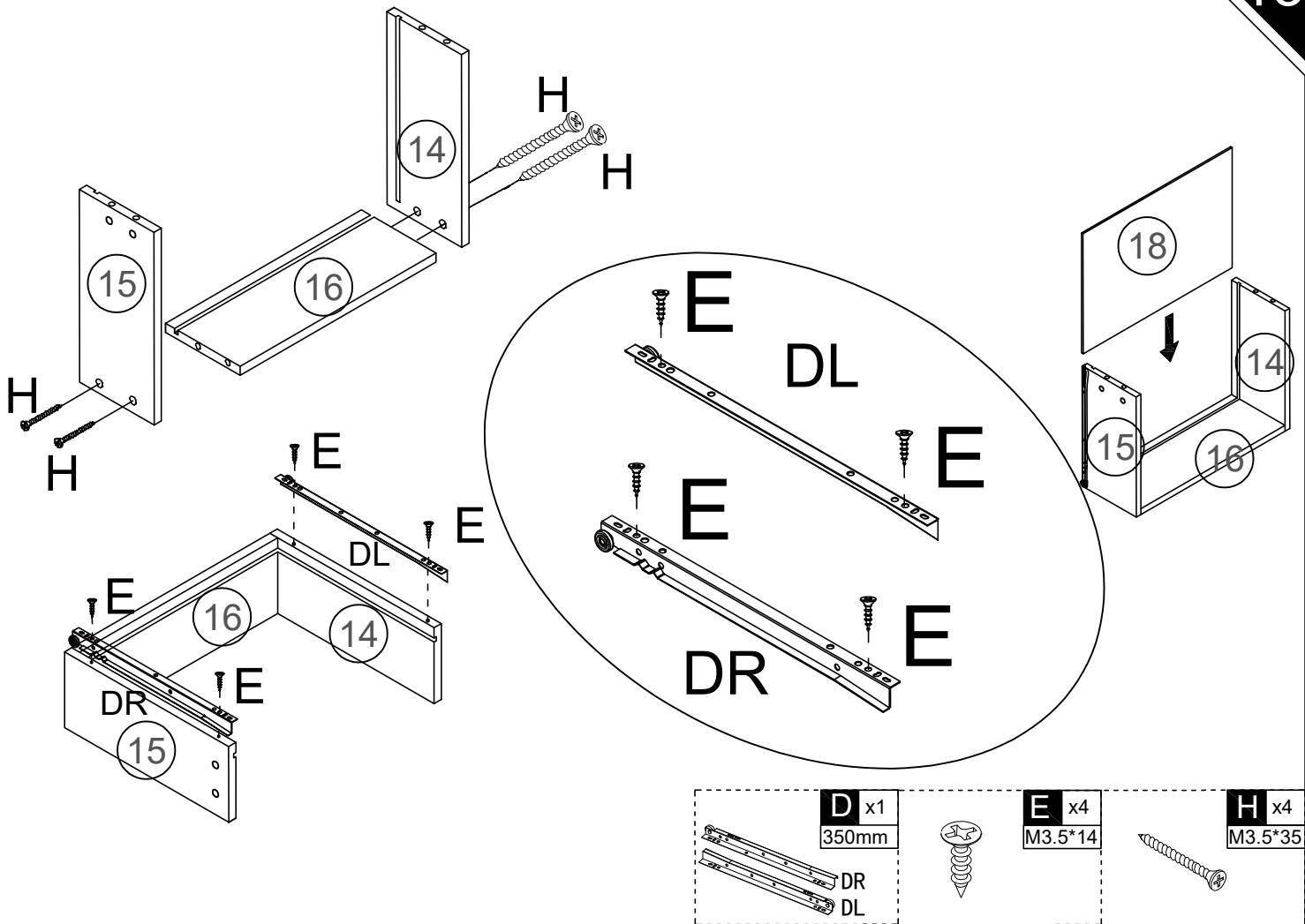
E x8
 M3.5*14

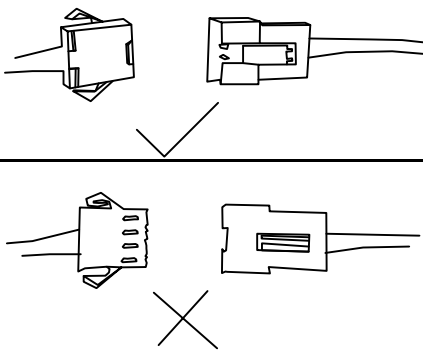
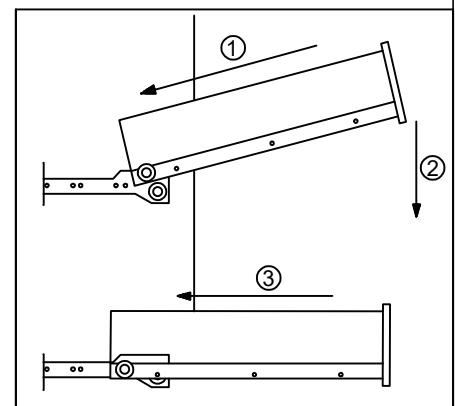
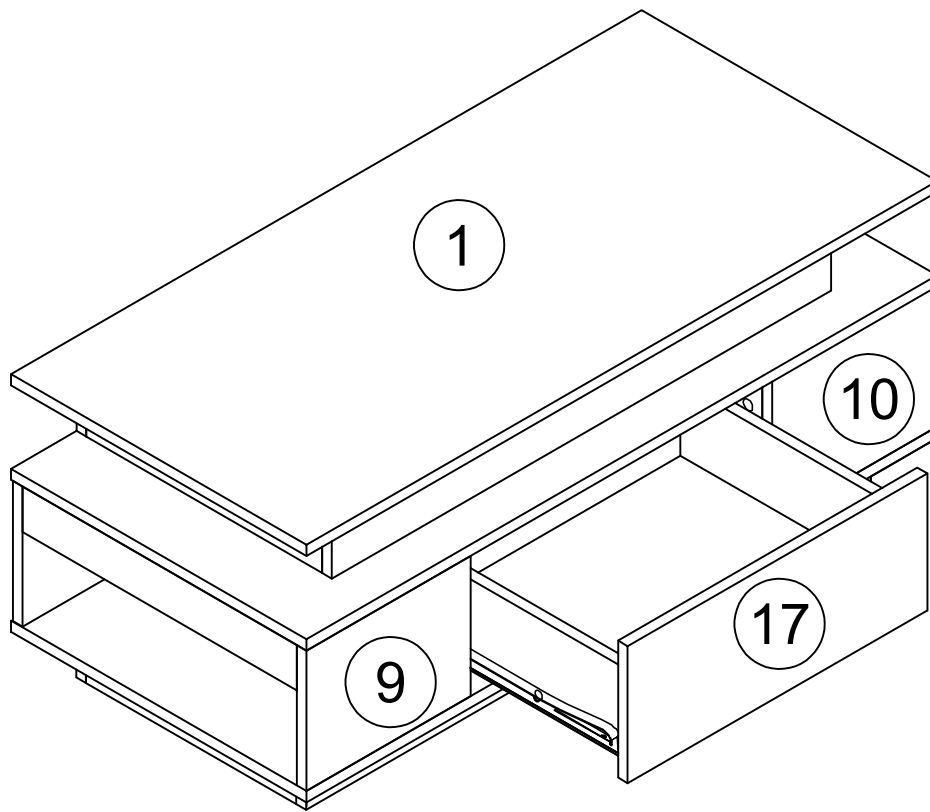


I x1

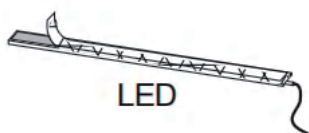


E x16
M3.5*14





UK: The connection of light stripe
 DE: Die Verbindung von Lichtstreifen
 FR: La connexion de la bande lumineuse
 IT: La connessione della striscia di luce
 ES: La conexión de la franja de luz



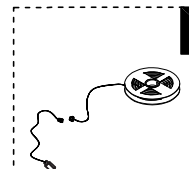
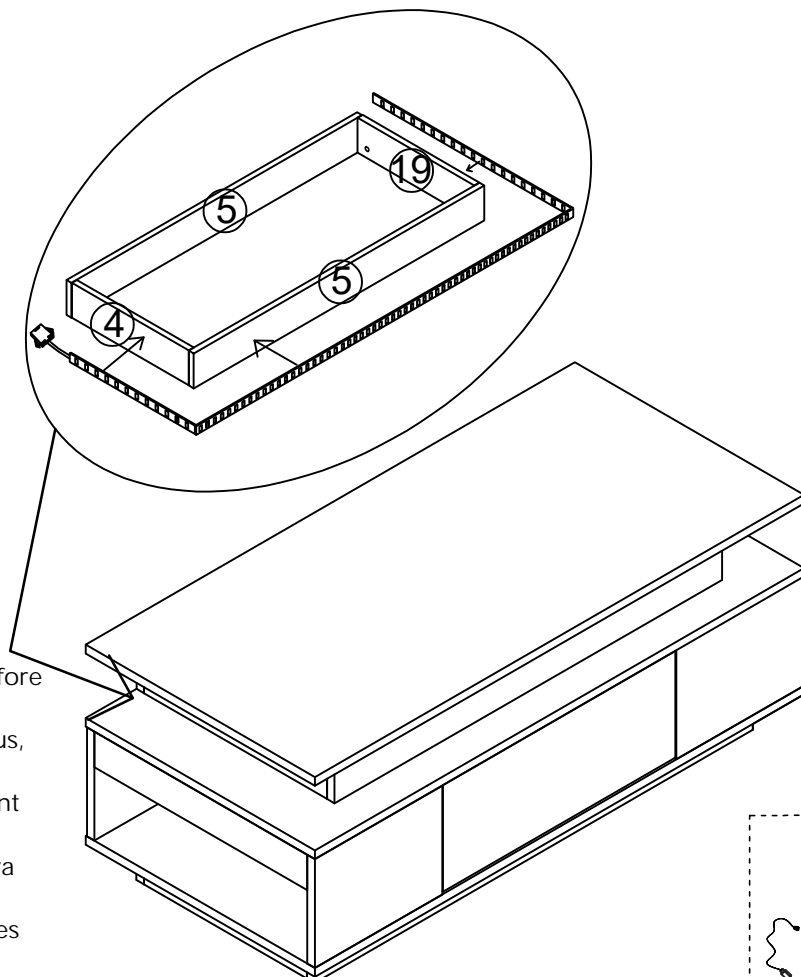
EN: - Please remove the adhesive tape before installing the light strip.

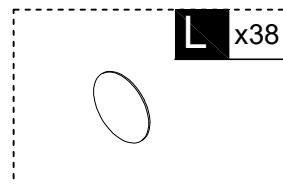
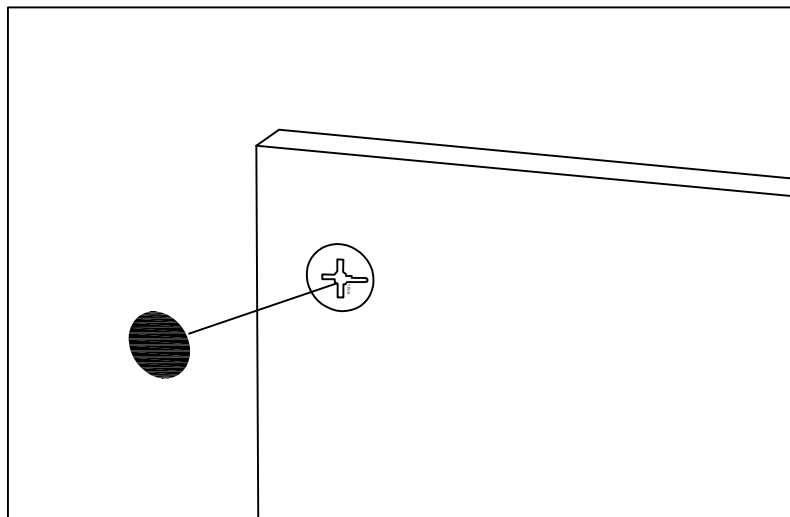
DE: - Bitte ziehen Sie das Klebeband heraus, bevor Sie die Leuchtstreifen installieren.

FR: - Veuillez enlever le ruban adhésif avant d'installer la bande de lumière.

IT: - Per favore, rimuovere la nastra adesiva prima di installare la striscia luminosa.

ES: - Por favor, quite la cinta adhesiva antes de instalar la tira de luz.





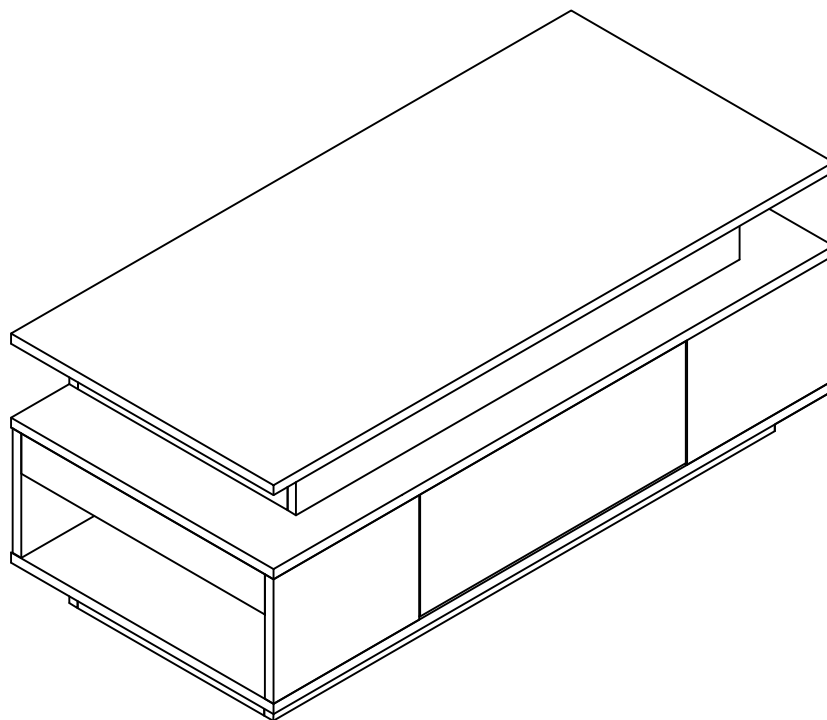
EN: After installing the product, stick the number **J** on the perforated position

FR: Une fois le produit installé, collez le numéro **J** à l'endroit où il y a des trous

DE: Nach der Installation des Produkts kleben Sie die Nummer **J** auf die perforierte Position

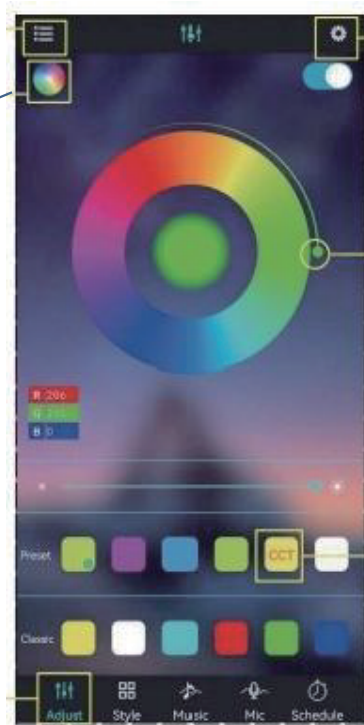
IT: Dopo l'installazione del prodotto, fissare il numero **J** sulla posizione perforata

ES: Después de instalar el producto, pegue el número **J** en la posición perforada



APP-PROGRAMMANWENDUNG

Klicken, um
Lampenliste
anzuzeigen
Farbrad
wechseln



Klicken für
Einstellungsansicht

Farbe anpassen

Farbanpassung
per Quadrat-
Symbol

Schnittstelle
durch Klicken
wechseln



HINWEIS:

Detaillierte Anleitung im
Menü "Guide"

PRODUKTPARAMETER

- Bluetooth: BLEVA 2
- Eingangsspannung: 4.5~26V
- Betriebstemperatur: -25~75 °C
- Abmessungen: 43×22×11 mm
- Gewicht: 30g
- Max. Leistung: 144W (24V)

VERBINDUNGSSCHRITTE

- ① LED-Farbstreifen & Controller verbinden, Controller einschalten
- ② QR-Code scannen zum App-Download:



- ③ App starten, Controller suchen & verbinden
- ④ Bluetooth-Drahtlossteuerung genießen

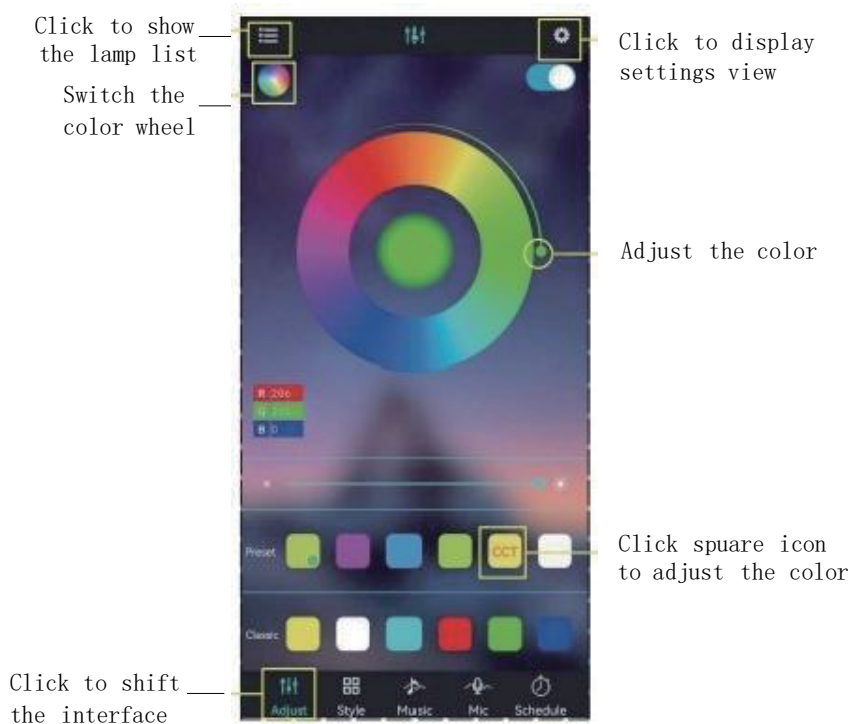
PRODUKTMERKMALE

- Direkte Handy-Steuerung (20m Reichweite)
- Automatische Verbindung in 5 Sekunden
- Musikrhythmus-Synchronisation
- Gruppensteuerung
- Helligkeits-/Geschwindigkeitsregelung
- Unterstützt bis 10m RGB(W)-Streifen
- Automatische Sprachumschaltung (DE/EN)

ANIMATIONSEFFEKTE

- Farbverläufe
- Einfarbige/ Zweifarbige Gradienten
- Monochrome/Bunte Blinkereffekte
- Farbspringen
- Musikresponsive Effekte

APP PROGRAM USAGE



- Scan two-dimensional code download APP
- ①Connect LED color strip and controller, power on controller
 - ②Scan two-dimensional code download APP:



- ③Start APP, search and connect controller
- ④Enjoy the Bluetooth wireless control experience



Notes:
detailed operating instructions,
enter the menu "Guide":

Product Paramters:

- Bluetooth:BLEV4.2
- Input Voltage:4.5~26V
- Working Temp:-25~75°C
- Size:43*22*11mm
- Weight:30g
- Max Power:144W (24V)

LED mobile phone Bluetooth controllerProduct Features

- LED Bluetooth controller is directly via mobilephone control remote distance can reach 20m without the need to setupeasy to connect open the software within 5 seconds you can automatically connect the controller
- Flow the rhythm of the music changes
- Group control
- Brightness, speed addition and subtraction
- Maximum can be 10 meters RGB(W) strip
- The software shows that the text is based onthe language of the mobile phone set up automatic transformation of Chinese and English

ANIMATION EFFECTS:

- Colorful gradient
- All kinds of monochrome, double color gradient
- All kinds of monochrome, double color, colorfull flashing
- Colorful jump
- Follow the thymhm of the music chagnes

APP-PROGRAMMANWENDUNG

Afficher la
liste des lampes
Farbrad
Changer la
Roue chromatique

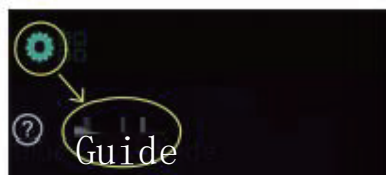


Afficher les
paramètres

Ajuster la couleur

Cliquez sur l'icône
carrée pour ajuster
la couleur.

Changer d'
interface
par clic



REMARQUE :

Guide détaillé dans le menu
"Guide"

CARACTÉRISTIQUES

- Bluetooth : BLEVA 2
- Tension d'entrée : 4.5~26V
- Température : -25~75° C
- Dimensions : 43×22×11 mm
- Poids : 30g
- Puissance max : 144W (24V)

ÉTAPES DE CONNEXION

- ① Connecter bande LED & contrôleur, allumer
- ② Scanner QR code pour télécharger l'app :



- ③ Lancer l'app, rechercher & connecter
- ④ Profiter du contrôle Bluetooth sans fil

FONCTIONNALITÉS

- Contrôle direct par smartphone (20m)
- Connexion automatique en 5 secondes
- Synchronisation musicale
- Contrôle de groupe
- Réglage luminosité/vitesse
- Prise en charge bandes ≤10m RGB(W)
- Basculage automatique FR/EN

EFFETS D'ANIMATION

- Dégradés de couleurs
- Dégradés uni/bicolores
- Clignotements mono/colorés
- Saut de couleurs
- Effets réactifs à la musique

UTILIZZO APP



PASSI CONNESSIONE

- ① Collega striscia LED & controller, accendi
- ② Scansiona QR code per scaricare APP:



- ③ Avvia APP, cerca & connetti controller
- ④ Goditi controllo wireless Bluetooth



NOTA:

Guida completa nel menu "Guide"

SPECIFICHE:

- Bluetooth: BLEVA 2
- Tensione ingresso: 4.5~26V
- Temperatura: -25~75° C
- Dimensioni: 43×22×11 mm
- Peso: 30g
- Potenza max: 144W (24V)

CARATTERISTICHE

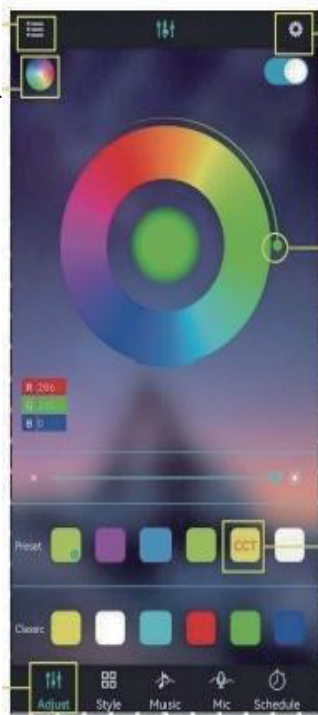
- Controllo diretto smartphone (20m)
- Connessione automatica in 5 secondi
- Sincronizzazione ritmo musicale
- Controllo di gruppo
- Regolazione luminosità/velocità
- Supporto strisce ≤10m RGB(W)
- Auto switch IT/EN

EFFETTI ANIMAZIONE:

- Sfumature colore
- Gradienti mono/bicolori
- Luci lampeggianti mono/colorate
- Salto colori
- Effetti reattivi alla musica

USO DE LA APLICACIÓN

Mostrar lista de —
Lámparas
Cambiar rueda de color



Ver ajustes

Ajustar el color

Clicar para ajustar color
con icono cuadrado

Cambiar interfaz
haciendo clic —



NOTA:

Guía completa en menú "Guide"

ESPECIFICACIONES:

- Bluetooth: BLEVA 2
- Voltaje entrada: 4.5~26V
- Temperatura: -25~75° C
- Tamaño: 43×22×11 mm
- Peso: 30g
- Potencia máx: 144W (24V)

PASOS DE CONEXIÓN

- ① Conectar tira LED y controlador, encender
- ② Escanear QR para descargar APP:



- ③ Iniciar APP, buscar y conectar
- ④ Disfrutar control inalámbrico Bluetooth

CARACTERÍSTICAS

- Control directo móvil (20m alcance)
- Conexión automática en 5 segundos
- Sincronización ritmo musical
- Control grupal
- Ajuste brillo/velocidad
- Soporte tiras ≤10m RGB(W)
- Auto cambio ES/EN

EFFECTOS DE ANIMACIÓN:

- Degradados de color
- Transiciones mono/bicolores
- Destellos monocromáticos/color
- Salto de colores
- Efectos reactivos a música



[DE]

BITTE BEACHTEN: Teilenummer 1.4.5.8.9.10.11.19 ist mit einer dichten Kunststoffschutzfolie überzogen.

Wenn das

Produkt nach der Demontage Kratzer aufweist, machen Sie sich bitte keine Sorgen, es handelt sich nicht um einen Produktschaden. Bitte ziehen Sie die schützende Kunststoffolie langsam entlang der Kante von der Oberfläche ab. Nach dem Abziehen wird das Produkt glatt und sauber.

[EN]

PLEASE NOTE: Part number 1.4.5.8.9.10.11.19 are covered with a tight plastic protective film.

If there are scratches on

the product after disassembly, please don't worry, it's not product damage. Please slowly tear off the protective plastic film on the surface along the edge. After peeling off, the product becomes smooth and clean.

[FR]

REMARQUE : les pièces numéro 1.4.5.8.9.10.11.19 sont recouvertes d'un film protecteur en plastique étanche.

Si le

produit présente des rayures après le démontage, ne vous inquiétez pas, il ne s'agit pas d'un dommage au produit. Retirez lentement le film protecteur en plastique sur la surface le long du bord. Une fois décollé, le produit

devient lisse et propre.

[IT]

NOTA BENE: il numero di parte 1.4.5.8.9.10.11.19 è coperto da una pellicola protettiva in plastica stretta.

Se ci sono

graffi sul prodotto dopo lo smontaggio, non preoccuparti, non è un danno al prodotto. Strappare lentamente la pellicola protettiva in plastica sulla superficie lungo il bordo. Dopo averla staccata, il prodotto diventa liscio e pulito.

[ES]

NOTA: La pieza número 1.4.5.8.9.10.11.19 está cubierta con una película protectora de plástico.

Si hay rayones en el

producto después de desmontarlo, no se preocupe, no se trata de daños en el producto. Retire lentamente la película protectora de plástico de la superficie a lo largo del borde. Después de despegarla, el producto quedará liso y limpio.



Certificate of Compliance

Certificate Number: ZKT-250902L21450C

Certificate's Holder : Shenzhen Lanling Optoelectronics Technology Co., Ltd
 511-G5, Building C, No. 101 Fukang Road, Henggang Community,
 Henggang Street, Longgang District, Shenzhen City, Guangdong
 Province

Manufacturer : Shenzhen Lanling Optoelectronics Technology Co., Ltd
 511-G5, Building C, No. 101 Fukang Road, Henggang Community,
 Henggang Street, Longgang District, Shenzhen City, Guangdong
 Province

Trade Mark : /

Product : LED Strip

Model(s) : CWG-5050RGB-60D-5v
 LED5050X18, LED5050X30, LED5050X48, LED5050X60, LED5050X72,
 LED5050X90, LED5050X120, LED2835X30, LED2835X60,
 LED2835X120, LED2835X180, LED2835X240, LED3528X30,
 LED3528X60, LED3528X120, LED3528X240, LED5730X60,
 LED5730X72, LED5730X84, LED3535X60, LED3535X120

Test Standard : EN IEC 62031:2020+A11:2021

This Attestation of Compliance is issued on a voluntary basis for electrical equipment below
 the voltage limits of Low Voltage Directive 2014/35/EU. The essential requirements are
 fulfilled accordingly based on the technical specifications applicable at the time of issuance.
 See also notes overleaf. It is only valid in connection with the test report number:
 ZKT-250902L21450S.



This Certificate of Conformity is based on single evaluation of the submitted sample(s) of the above mentioned
 product. It does not imply an assessment of the whole product and relevant Directives to be observed.

Shenzhen ZKT Technology Co., Ltd.

1/F, No. 101, Building B, No. 6, Tangwei Community Industrial Avenue,
Fuhai Street, Bao'an District, Shenzhen, China



Certificate of Compliance

Certificate Number: ZKT-250902L21449C

- Certificate's Holder** : Shenzhen Lanling Optoelectronics Technology Co., Ltd
511-G5, Building C, No. 101 Fukang Road, Henggang Community,
Henggang Street, Longgang District, Shenzhen City, Guangdong
Province
- Manufacturer** : Shenzhen Lanling Optoelectronics Technology Co., Ltd
511-G5, Building C, No. 101 Fukang Road, Henggang Community,
Henggang Street, Longgang District, Shenzhen City, Guangdong
Province
- Trade Mark** : /
- Product** : LED Strip
- Model(s)** : CWG-5050RGB-60D-5V
LED5050X18, LED5050X30, LED5050X48, LED5050X72, LED5050X90,
LED5050X120, LED2835X30, LED2835X60, LED2835X120,
LED2835X180, LED2835X240, LED3528X30, LED3528X60,
LED3528X120, LED3528X240, LED5730X60, LED5730X72, LED5730X84,
LED3535X60, LED3535X120
- Test Standard** : EN IEC 55015:2019+A11:2020
EN IEC 61000-3-2:2019 + A1:2021 + A2:2024
EN 61000-3-3:2013 + A1:2019 + A2:2021
EN IEC 61547:2023

This Attestation of Compliance is issued on a voluntary basis for electrical equipment below the voltage limits of EMC Directive 2014/30/EU. The essential requirements are fulfilled accordingly based on the technical specifications applicable at the time of issuance. See also notes overleaf. It is only valid in connection with the test report number: ZKT-250902L21449E.



This Certificate of Conformity is based on single evaluation of the submitted sample(s) of the above mentioned product. It does not imply an assessment of the whole product and relevant Directives to be observed.