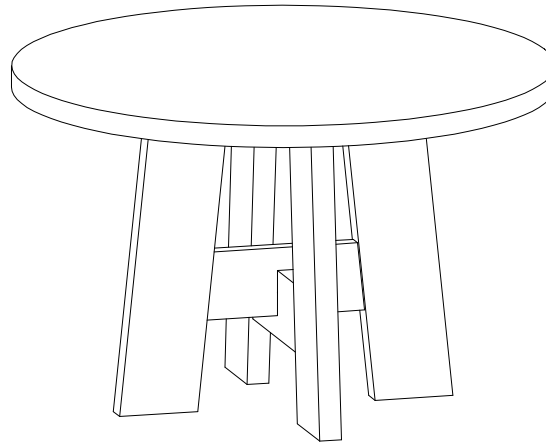


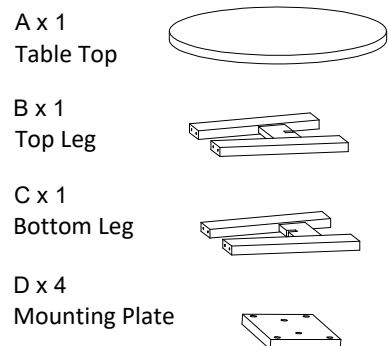
# ROUND WOOD 47" DINING TABLE

Assembly Instructions

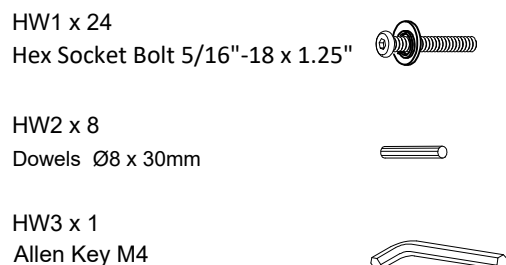


Everything we make is incredibly simple to set up, including your new dining table. You won't need any additional tools.

#### Parts List

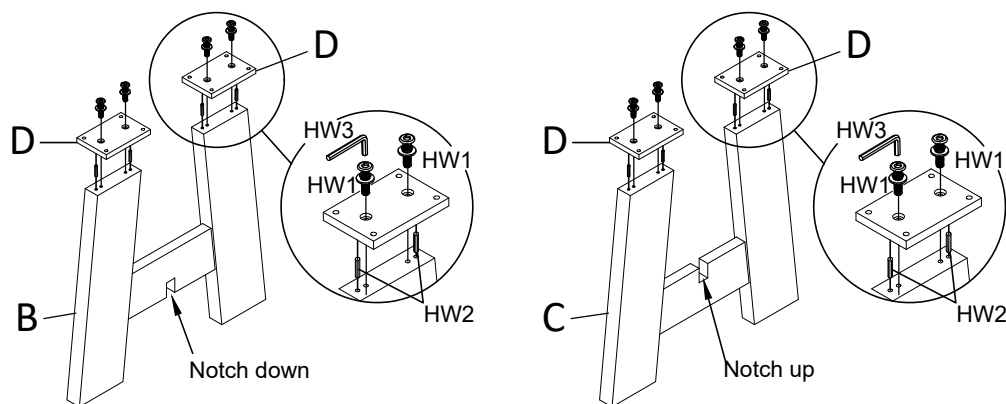


#### Hardware List



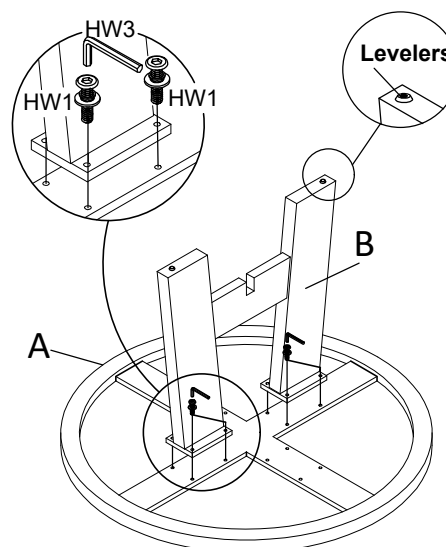
1

Insert the dowels (HW2) into the holes at the top of the legs (B&C). Place the mounting plates (D) on top of the 4 legs. Attach the mounting plates by using the Allen key (HW2) to screw in the Hex Socket Bolt (HW1).



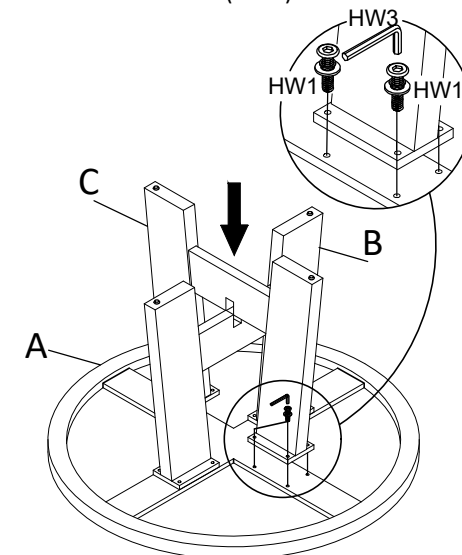
2

Place the table top (A) upside down on a soft surface. Align the screw holes on the table top to the screw holes on the top of leg (B). Attach them by using the Allen Key (HW3) to screw in the Hex Socket Bolt (HW1).



3

Insert the notch on the bottom leg (C) into the notch of the top leg (B). Slide the legs together creating a cross shape, and aligning the screw holes on the table top to the leg (C), as shown below. Attach leg (C) to the table top by using the Allen key (HW3) to screw in the Hex Socket Bolt (HW1).



4

Turn the table upright. Use the levelers on the bottom of the legs to adjust the table as needed to make it level. Place the dining table in the place where you will use it.

