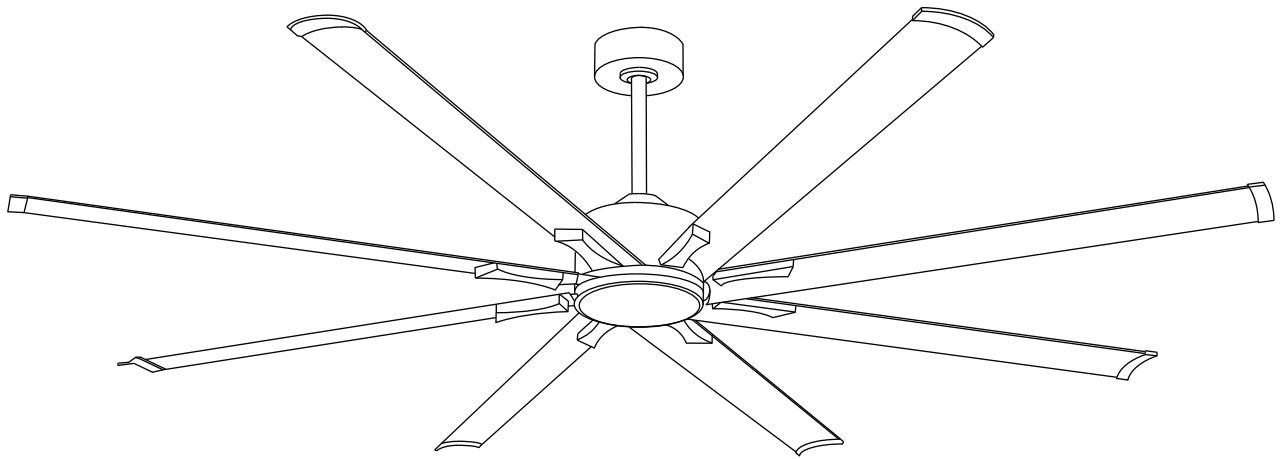


User Manuals



CEILING FAN

WARM TIPS

1. Insert the downrod ball head into the groove of the mounting bracket. (Figure 1)

2. Wall switch light memory: (Figure 2)

* Turn off wall switch

* Wait 10 seconds to turn on wall switch, it will remember the last light setting.

If quickly toggle the wall switch within 5 seconds, the CCT will switch.

3. Remote control/wall will not have memory until 10 seconds after turning off the lights.

4. The lighting kit is replaceable.

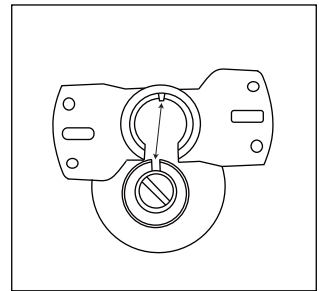


Figure 1

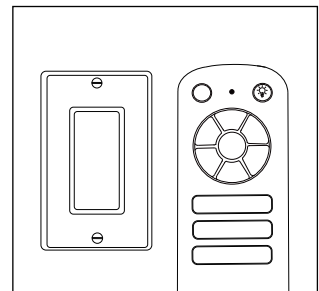
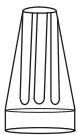
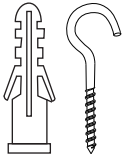

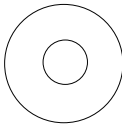


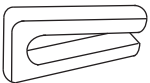
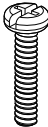
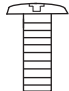
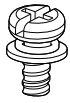


Figure 2

ACCESSORIES

● Check to see that you have received the following parts:

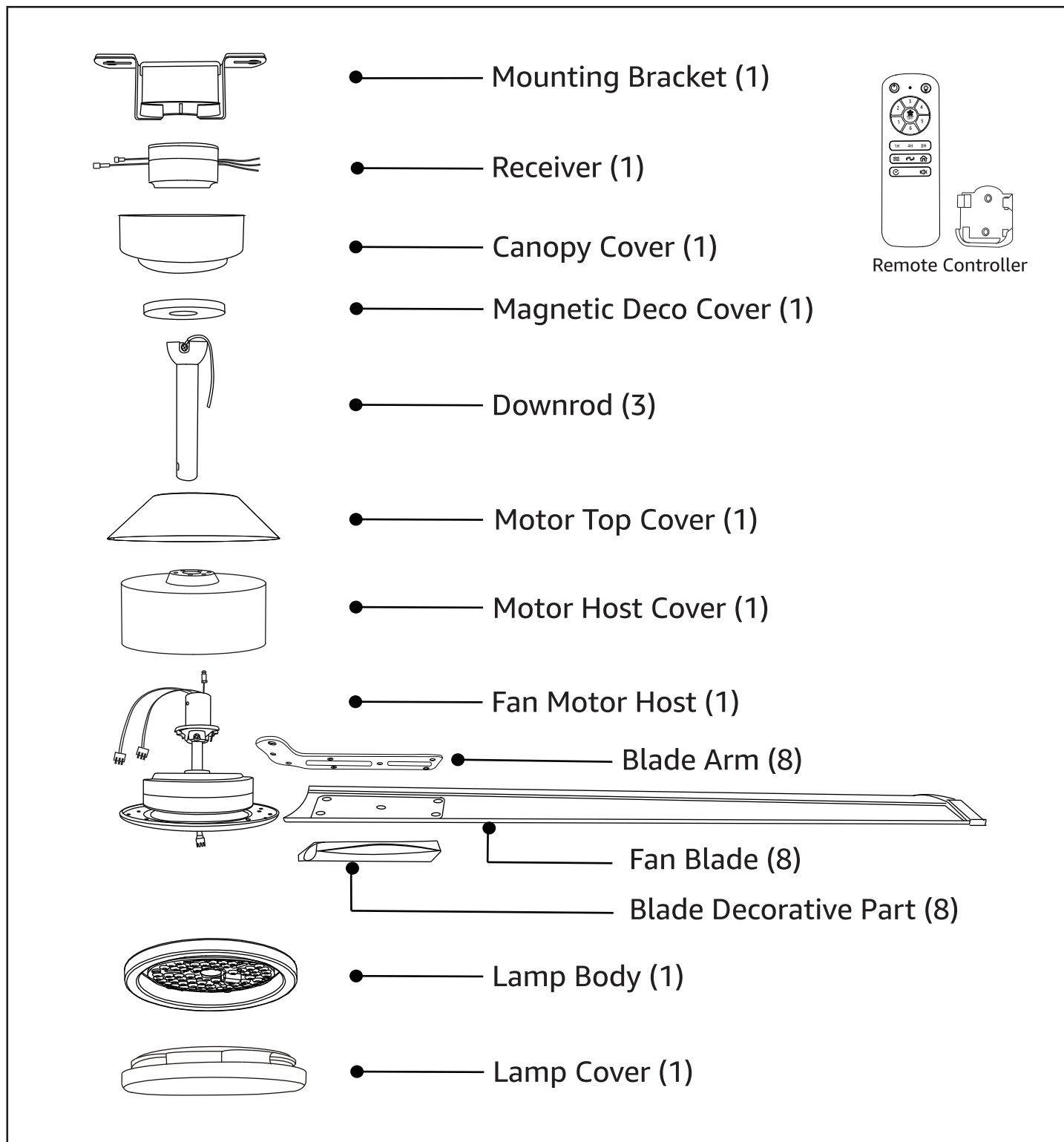
<p>3</p>  <p>Wire nut</p>	<p>1+1</p>  <p>Hook / expansion tube</p>	<p>4</p>  <p>Self-tapping screw</p>	<p>6</p>  <p>Washer</p>	<p>2</p>  <p>Expansion screw</p>
---	--	---	---	--

<p>2</p>  <p>Balance pad</p>	<p>1</p>  <p>Balance clip</p>	<p>2</p>  <p>J-box screw</p>	<p>40+2 Spare</p>  <p>Blade screw</p>	<p>1 Spare</p>  <p>Arm screw (24 pre-installed)</p>
--	---	--	---	---

CEILING FAN

PACKAGE CONTENTS

- In addition to the parts included in the accessory package, there are a total of 12 fan light accessories. Please carefully check whether any parts are missing from the package and make sure to confirm all the parts inside the box .



CEILING FAN

IMPORTANT WARNING

- To reduce the risk of electric shock, turn off all power sources.
- All wiring must comply with the National Electrical Code and local electrical codes. Electrical installation should be performed by a qualified, licensed electrician.
- **WARNING:** To reduce the risk of personal injury, use only the two steel screws (and lock washers) provided with the outlet box for installation. Most outlet boxes are typically used to support lighting devices instead of fans and may need to be replaced. If in doubt, please consult a qualified electrician.

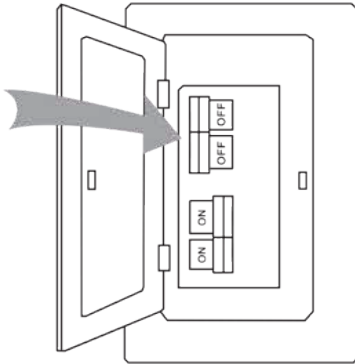
WARNING

TO REDUCE THE RISK OF FIRE
ELECTRIC SHOCK OR PERSONAL INJURY
MOUNT FAN TO OUTLET BOX MARKED
ACCEPTABLE FOR FAN SUPPORT

- Do not turn the fan blades until the fan installation is completed.
- To avoid personal injury or damage to the fan and other items, maintain and clean the fan with care.
- Do not use water or detergents to clean the fan or fan blades. A dry rag or a slightly damp cloth is suitable for cleaning.
- Electrical diagrams are for reference only. Please refer to the instructions included with the packaging for properly assembled lighting kits.

CEILING FAN

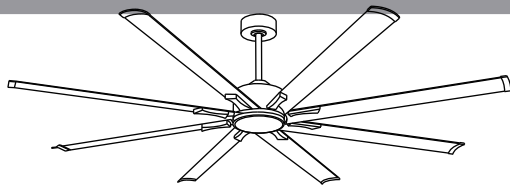
SAFETY RULES



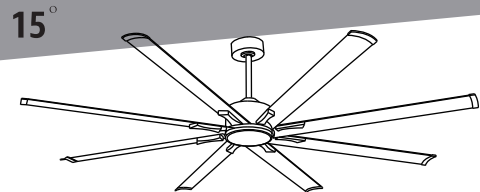
Turn off the main circuit power switch and wall fan switch.

⚠ WARNING

Failure to disconnect the power supply prior to installation may result in serious injury or death.



Horizontal ceiling installation



Slope ceiling installation

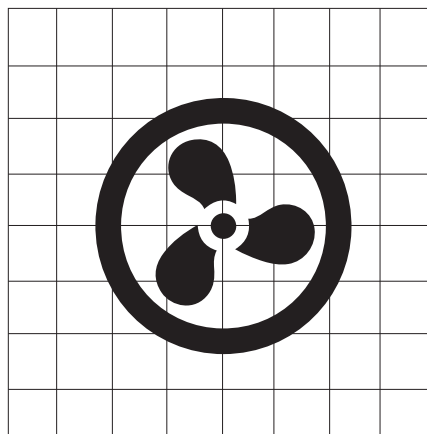
Proper installation: The ceiling fan must be mounted vertically on a sturdy ceiling, and the fan must be installed in a manner capable of supporting a weight greater than 66 lbs. If the fan is mounted on a slanted ceiling, the hanger's opening should be tilted upward, and the slot should be inserted into the ear.

⚠ WARNING

Safety Tips: Slope ceiling installation is only applicable to slope ceiling installation below 15° horizontally.

INSTALLATION RECOMMENDED

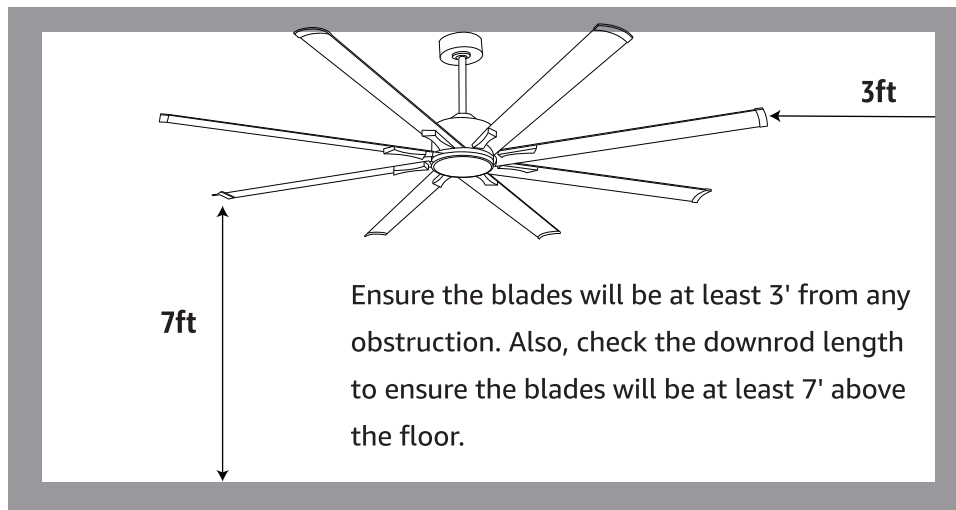
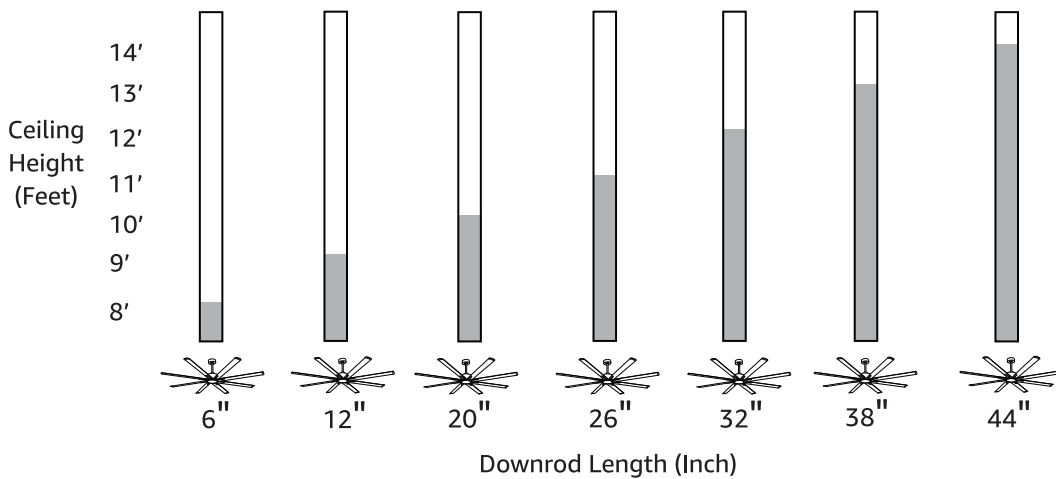
■ Recommended Room Size:



UP TO 20 FT X 20 FT

CEILING FAN

■ Recommended installation height and downrod length:



ELECTRICAL AND STRUCTURAL REQUIREMENTS

- Your new ceiling fan will require a grounded electrical supply line of AC110~130V/60Hz 15 Amp Circuit.

⚠ WARNING

In order to avoid the risk of dropping, this product is only installed on concrete ceilings or strong wood.

⚠ WARNING

When installing the fan, fix the ceiling fan motor on the ceiling before installing the ceiling fan blade.

CEILING FAN

- If your fan is to replace an existing light fixture, turn power off at the main fuse box and remove the existing light fixture.

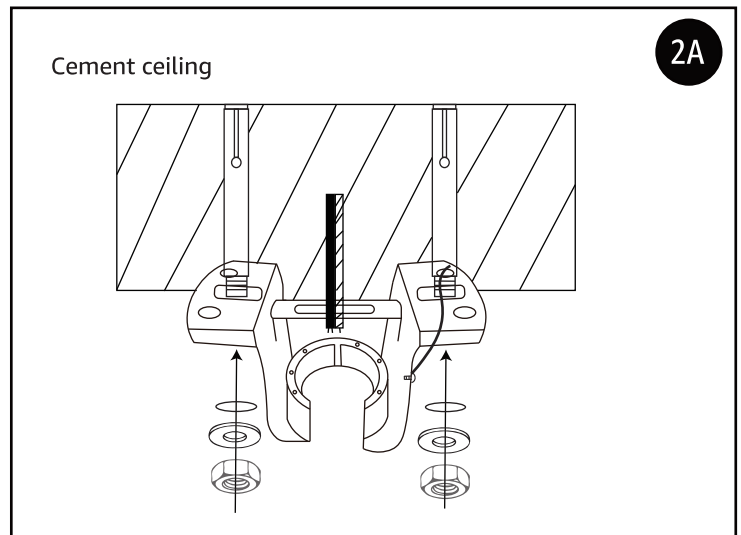
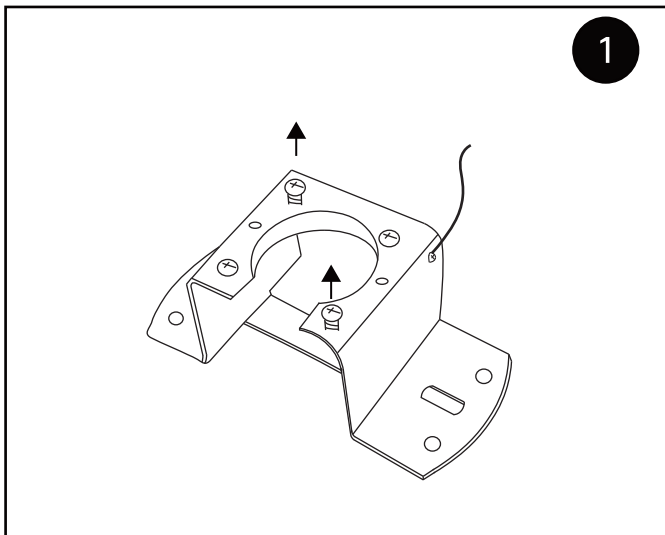
⚠ WARNING

Turning off wall switch is not sufficient, to avoid possible electrical shock be sure electricity is turned off at the main fuse box before wiring. All wiring must be in accordance with National and Local codes and the ceiling fan must be properly grounded as a precaution against possible electrical shock.

⚠ WARNING

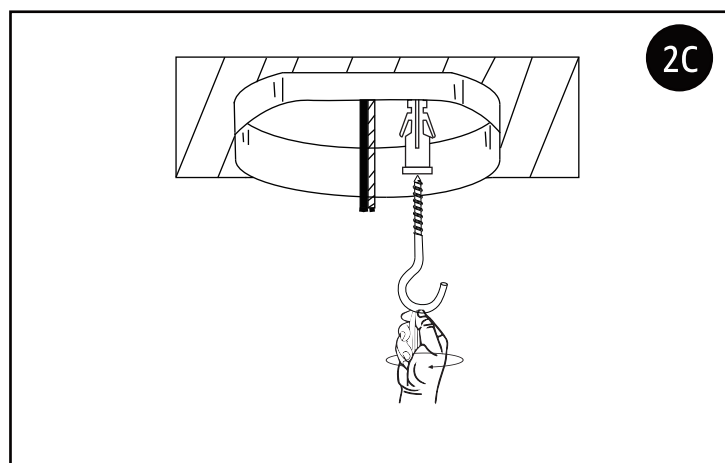
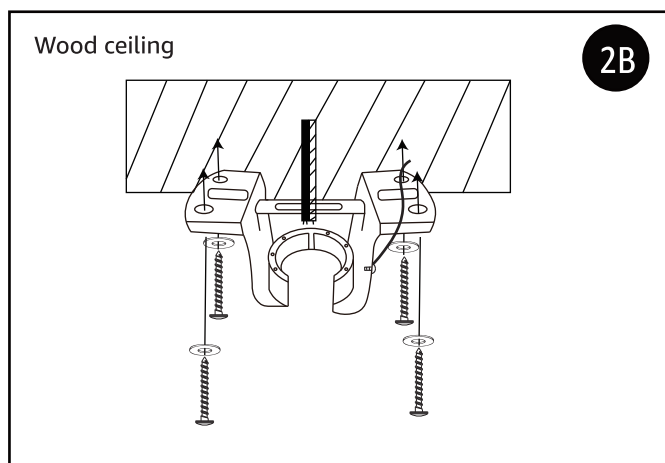
Do not operate this fan with a variable(Rheostat) wall controller or dimmer switch. Doing so could result in damage to the ceiling fan's remote control unit.

INITIAL INSTALLATION



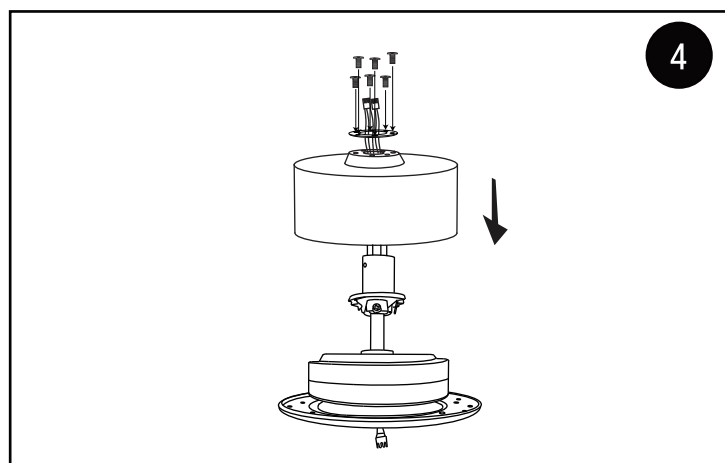
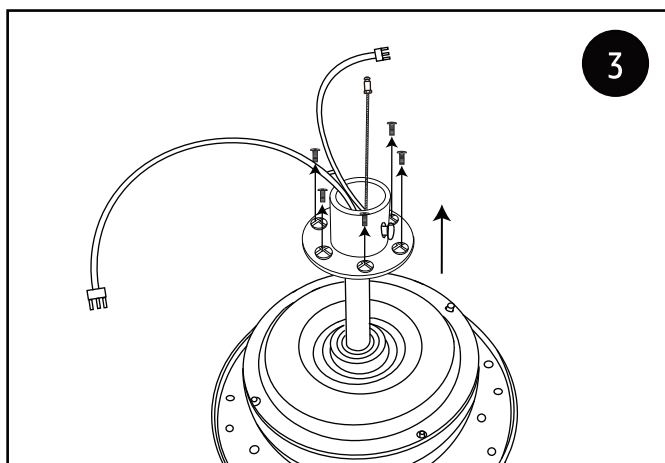
- 1 Unscrew the two diagonal screws on the mounting bracket 2~3 circles, and ensure that they remain securely fixed to the bracket.
- 2A Mount the bracket onto the ceiling and secure it using appropriate accessory screws based on the type of ceiling material. For larger-sized heavy-duty ceiling fans, we strongly recommend using expansion screws.

CEILING FAN



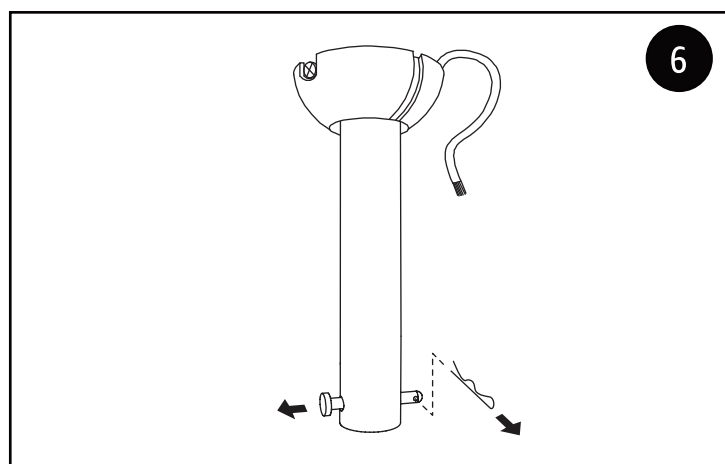
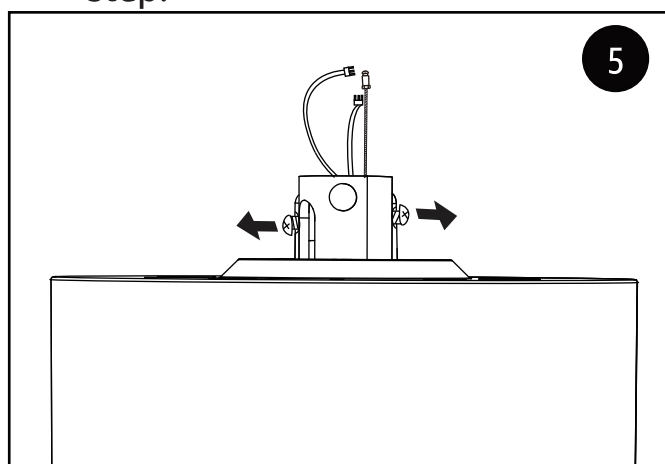
2B Wood ceiling: Use self-tapping screws and washers to fix the bracket.

2C Install the expansion tube and hook onto the ceiling for hanging the safety rope.



3 Unscrew the screws and reinforcement plate on the fan motor host (pre-installed).

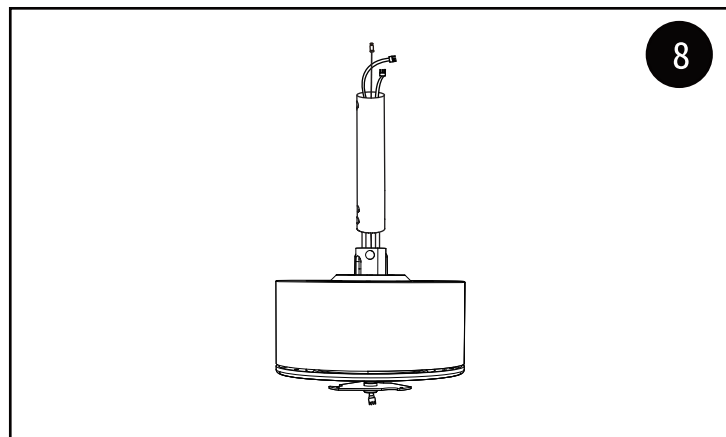
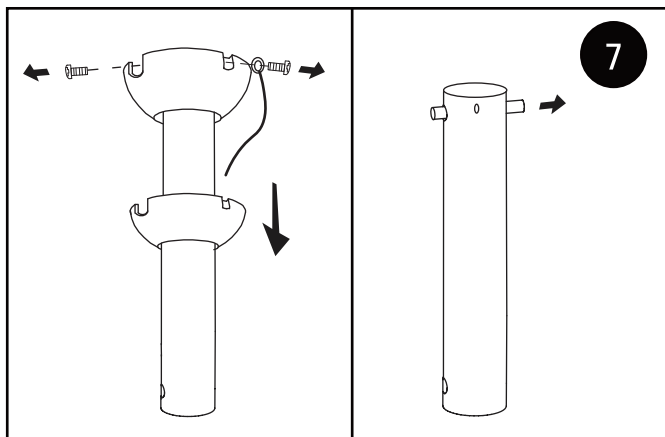
4 Move the main motor cover downward and place the reinforcement plate on top of the motor cover. Secure it with the six screws removed in the previous step.



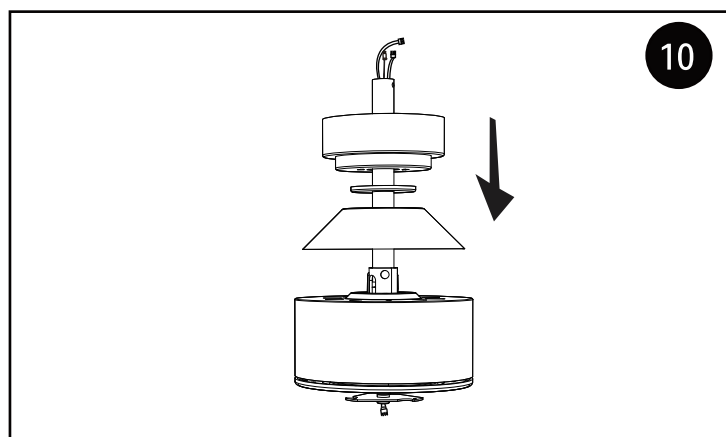
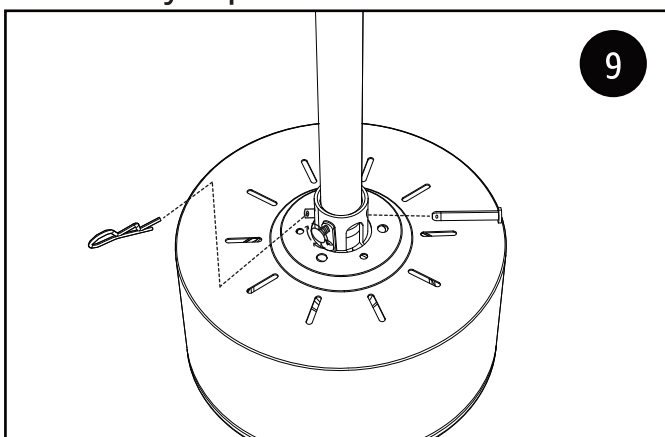
5 Loosen the two screws on the yoke (unscrew but do not completely remove).

6 Remove the downrod pin from the downrod.

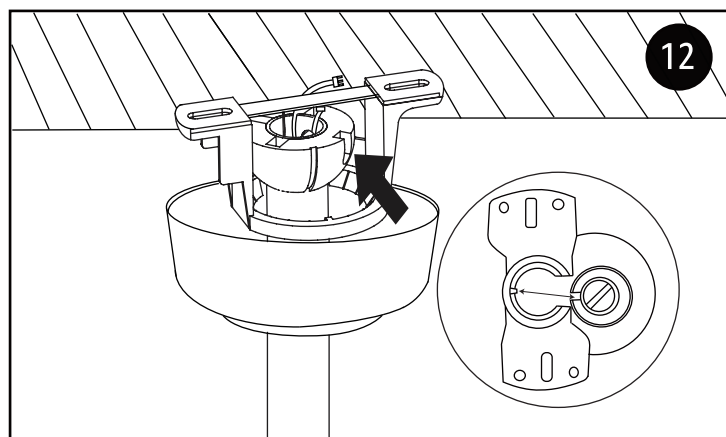
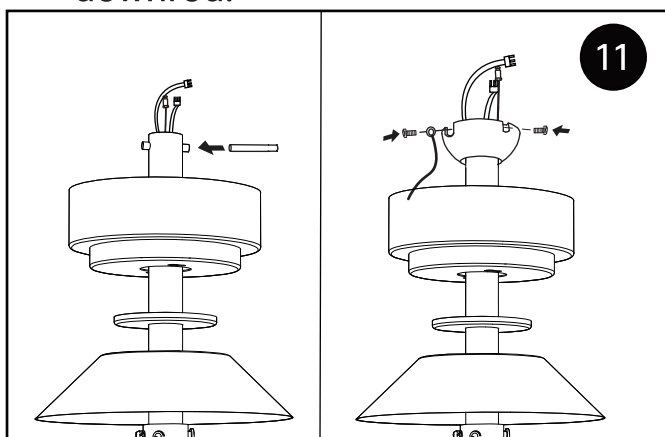
CEILING FAN



- 7 Remove the two screws from the ball head and pull out the horizontal pin.
- 8 Thread the wires of the fan motor host through the downrod along with the safety rope.

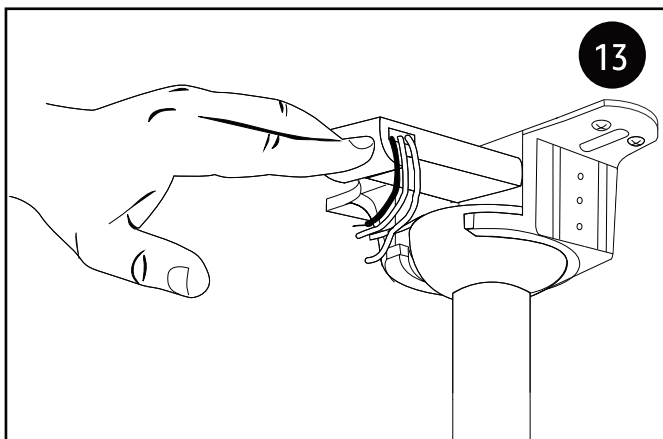


- 9 Insert the downrod pin, lock it with the downrod clip, and then tighten the two screws on the yoke.
- 10 Install the motor top cover, Magnetic Deco Cover, and canopy cover onto the downrod.

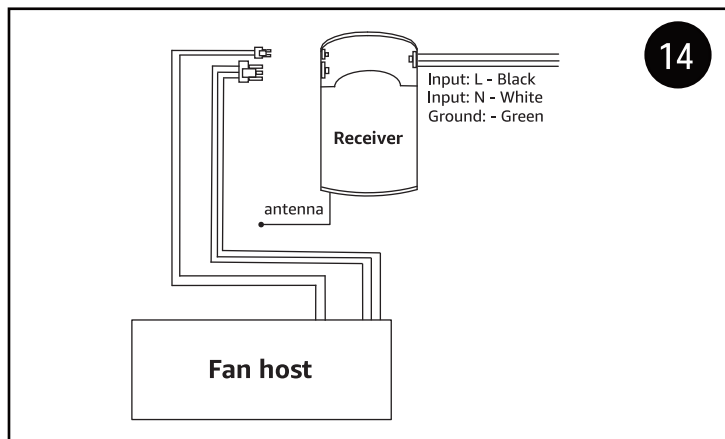


- 11 Insert the horizontal pin, then install the ball head and tighten the two screws on the ball head.
- 12 Install the downrod into the mounting bracket opening that is already securely fastened to a structural ceiling member. The tab opposite the mounting bracket opening should fit into the slot on the ball.

CEILING FAN



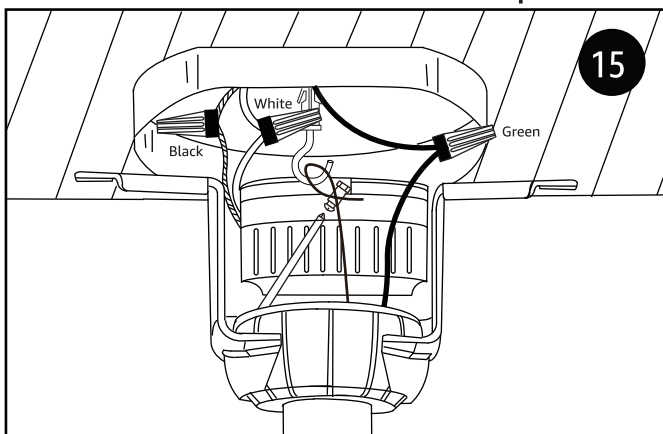
13



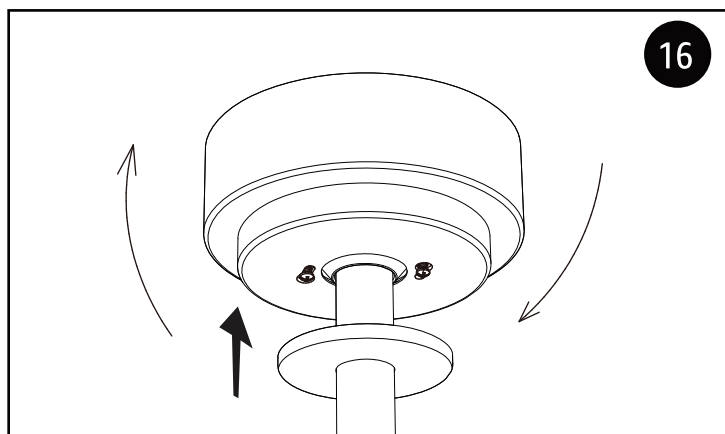
14

13 Place the receiver on the bracket.

14 Connect the wires between the controller and the fan motor: connect the 3-pin wire connector and the 2-pin wire connector.



15



16

15 For safety, please hang the safety rope on the hook:

Wiring:

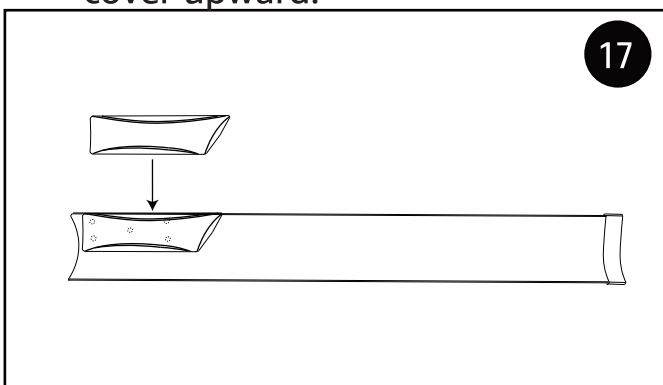
Connect the "Neutral wire" (white wire) from ceiling to the white wire.

Connect the "Live wire" (black wire) from ceiling to the black wire.

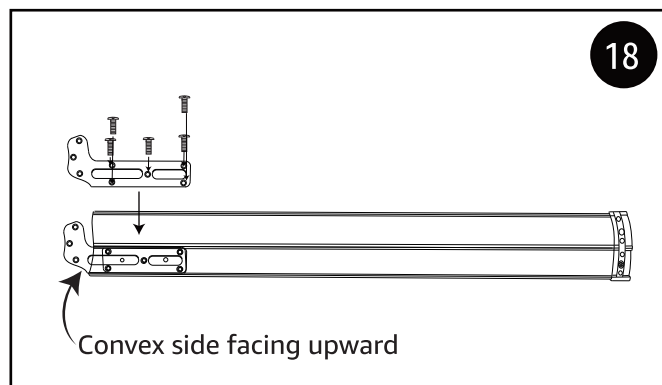
Connect the "Ground wire"

(green or yellow/green or bare) from ceiling to the green wire.

16 Push the canopy cover upward, align it with the two screws from step one, rotate and tighten the screws to secure the canopy cover, then push the magnetic deco cover upward.



17

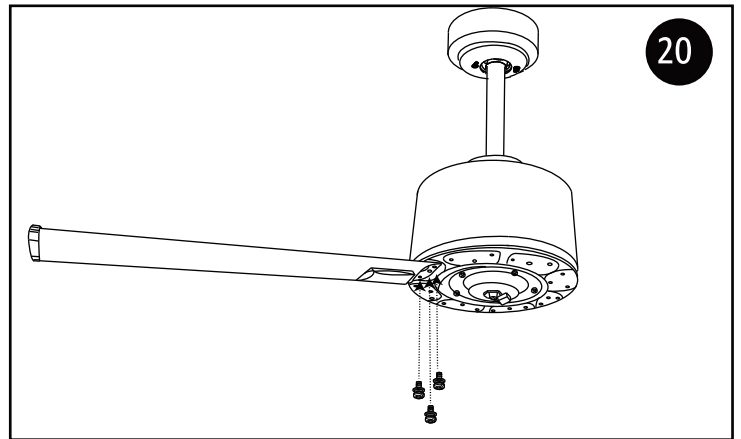
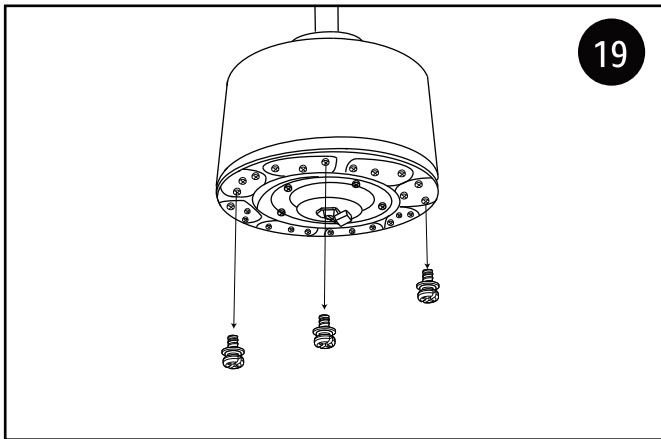


18

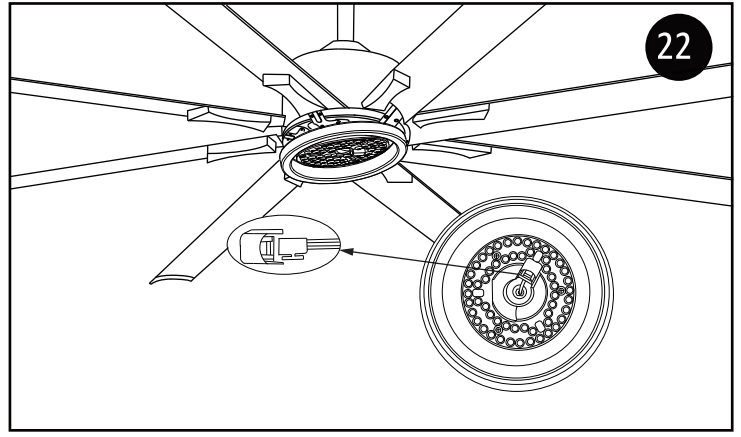
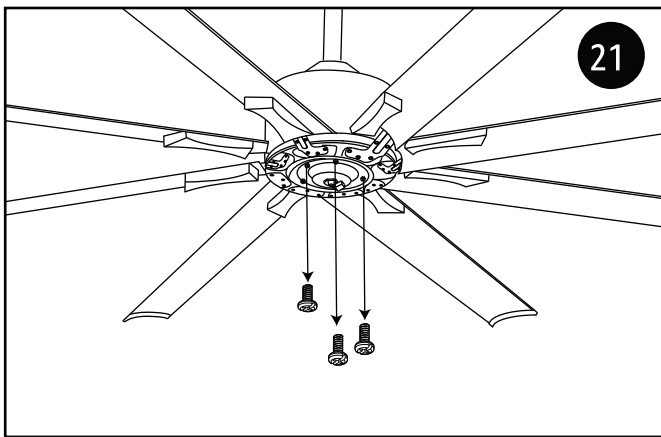
17 Attach the decorative cover to the fan blades. (Front side of the fan blades)

18 Use 5 screws to attach the arms to the fan blades; note that the convex side should be facing upward.

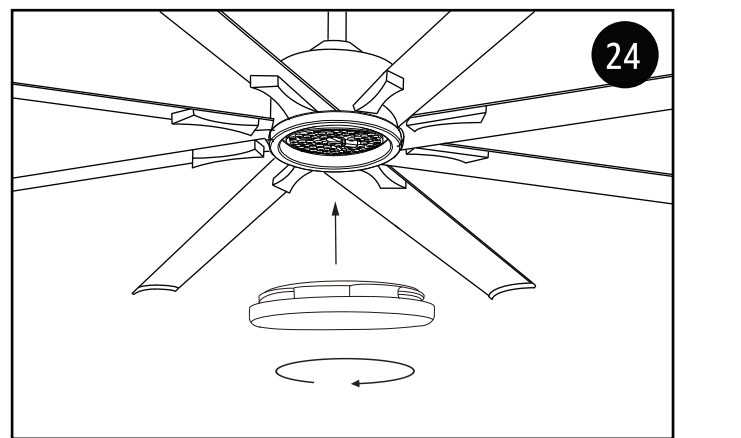
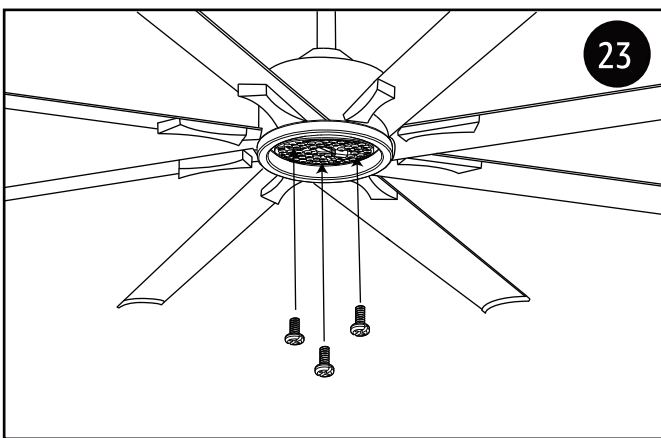
CEILING FAN



- 19 Unscrew all 24 pre-installed fan blade screws.
- 20 Align the holes on the fan arms with those on the motor, and secure them with 3 screws. Repeat this step to install the remaining fan blades.



- 21 Remove the three screws from the small round plate on the fan motor housing.
- 22 Connect the wire terminal of the LED board.



- 23 Move the lamp body upward and secure it with the 3 screws removed in the previous step.
- 24 Locate the locking point of lamp body, and screw in the lamp shade. Installation is completed.

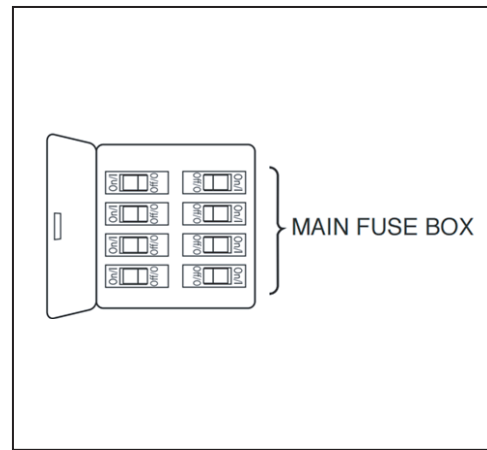
CEILING FAN

HOW TO OPERATE YOUR CEILING FAN

- **IMPORTANT:** Using a full range dimmer switch(not included) to control fan speed will damage the fan. To reduce the risk of fire or electrical shock, do not use a full range dimmer switch to control the fan speed(Figure 1).
- Restore electrical power to the outlet box by turning on the electricity at the main fuse box (Figure 2).



(Figure 1)



(Figure 2)

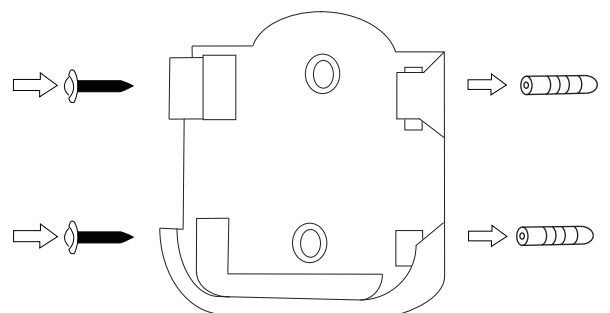
WARNING

Check to see that all connections are tight, including ground, and that no bare wire is visible at the wire connectors, except for the ground wire.

Do not operate this fan with a variable(Rheostat) wall controller or dimmer switch. Doing so could result in damage to the ceiling fan's remote control unit.

WALL PLATE INSTALLATION


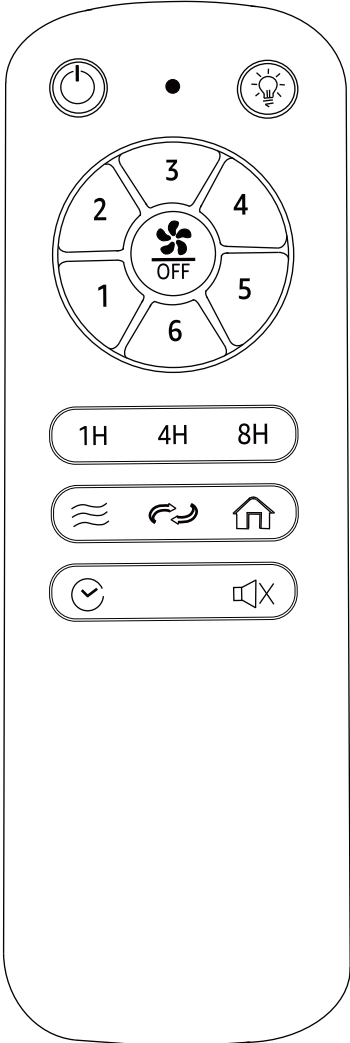






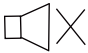
- **Installing Wall Plate:**
Attach wall plate using the two provided screws.



CEILING FAN


REMOTE CONTROL

- To operate the fan, please install 2 AAA batteries (included) in the handheld remote transmitter. If not used for extended periods of time, remove the batteries to prevent damage to the transmitter. Store the remote away from excessive temperatures and humidity.

	All off	
	Light on/off (light memory after 10 seconds) CCT switch (fast click to switch)	
1-6	Fan speed setting	
	Fan on/off	
	Natural wind	
	Airflow direction	
	Safe mode (anti-theft mode)	
	Delay off in 5 minutes	
	Mute	
1H 4H 8H	Quick timer setting (1H-4H-8H)	

Remote Controller Pairing:

The remote controller can be used to control multiple ceiling fans.

- For the ceiling fans you want to pair, turn the main power switch off for at least 1 minute.
- Turn on the main power switch within 10 seconds, then press and hold the  button for about 3 seconds.
- Wait for the fan receiver to make a beeping sound, then release the button. Complete pairing, if the pairing process is unsuccessful, please repeat the above steps.

CEILING FAN

TROUBLE SHOOTING

PROBLEM	SUGGESTED REMEDY
If fan does not start	<ol style="list-style-type: none"> 1. Check main and branch circuit fuses or circuit breakers. 2. Make sure that the wall control is turned "ON" 3. Check line wire connections to fan and switch wire connections in switch housing. CAUTION: Make sure main power is turned off. 4. Make sure battery has power, change battery(2*AAA) to try again. 5. The remote controller is not paired, check Page.12 to pair. 6. The motor or receiver or remote controller is fault, contact our customer service.
If fan sounds noisy	<ol style="list-style-type: none"> 1. Make sure all screws in motor housing are snug. (not over tightened) 2. Too close to the wall, make sure the blades at least 3ft to the wall. 3. Make sure wire connectors in switch housing are not rattling against each other or against the interior wall of the switch housing. CAUTION: Make sure main power is turned off before entering switch housing. 4. Some fan motors are sensitive to signals from Solid State variable speed controls. DO NOT USE a Solid State variable speed control. 5. Allow "break-in" period of 24 hours. Most noises associated with a new fan will disappear after this period.
If fan wobbles	<p>All blades are weighed and grouped by weight. The following procedures should eliminate most of the wobble. Check for wobble after each step:</p> <ol style="list-style-type: none"> 1. Check that all blades are screwed firmly into motor housing. 2. Make sure that canopy and mounting bracket are tightened securely to ceiling junction box and junction box is mounted firmly to ceiling joist. 3. Make sure the ball head into the slot. 4. Make sure the the downrod is well fixed by screws 5. Interchanging two adjacent blades could redistribute the weight and possibly result in smoother operation. 6. The balancing kit should only be used if there is an unacceptable amount of fan wobble after completing all the steps: How to use balancing kit: <ol style="list-style-type: none"> (1) Turn the fan on and set the speed control setting to a speed at which the wobble is the greatest. (2) Turn off the fan and allow it to come to a complete stop. Select one blade and place the balance clip on it, halfway between the blade holder and the blade tip on the trailing edge of the blade. (3) Turn the fan on. Note whether the wobble has increased or decreased. Turn the fan off, move the clip to another blade, and retest. Repeat this procedure on all blades, noting the blade on which the greatest improvement is achieved. (4) Move the clip back to the blade that showed the greatest improvement. Move the clip inward and outward on this blade and operate the fan to find the position where the clip gives the greatest improvement. (5) Remove the clip and install a balancing weight to the top of the blade along the centerline, near the point where the clip was positioned. (6) If the fan wobble problem has not been corrected, you can try to improve the balancing further by using the balancing clip and additional weights. <div data-bbox="580 1868 1246 2074" style="text-align: center;"> <p>The diagram shows a top-down view of a ceiling fan with five blades. One blade has a small metal clip attached to its trailing edge. An arrow points from the text 'WEIGHT BALANCING' to this clip.</p> </div>

CEILING FAN

CUSTOMER SERVICE

30-Days Full Refund Guarantee

If you are not completely satisfied or the item isn't what you expected, just tell us within 30 days. We will give you a full refund unconditionally.

Friendly Reminder

It's better to contact us than leaving a negative shopping experience. Nothing is more important than your satisfaction, and we will do our best to serve you.

Quick Response within 12 Hours

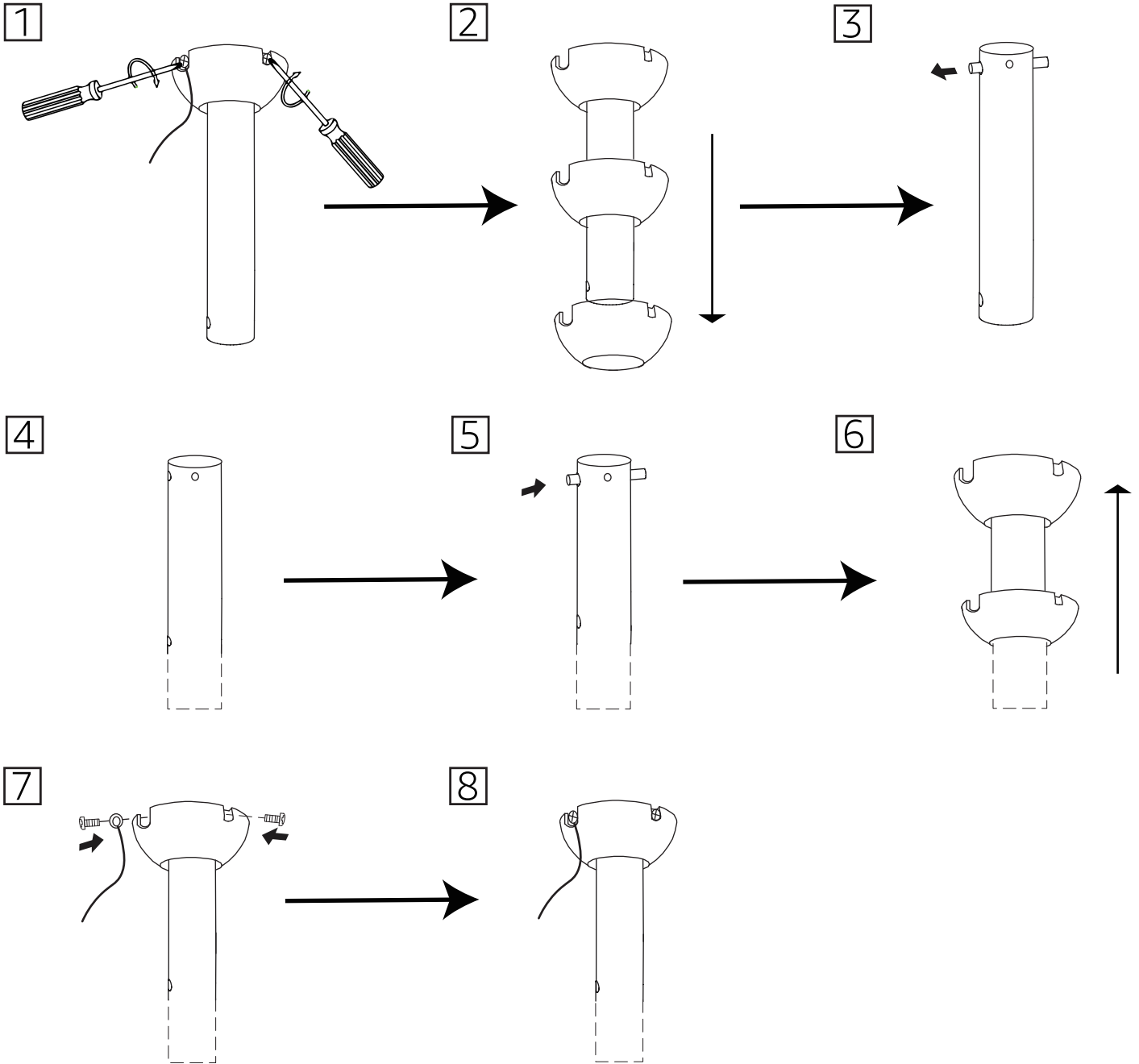
You can contact us without any hesitation at any time of the day, and we will reply to you within 12 hours. (It would be appreciated if you could provide us with a video or pictures, if available)

2-year Warranty

We will send you brand new items for free or give you a full refund if any quality problems occur within 2 years from the date of purchase.

CEILING FAN

REPLACE THE DOWNROD



! WARNING

Fan fall hazard

To prevent serious injury or death:

- Always follow the downrod assembly instructions exactly.
- Verify the downrod is assembled correctly by firmly pulling on the hanger ball.
- Pin must be reinserted to secure downrod assembly

