

1.0 Reference and Address			
Report Number	221117010GZU-001	Original Issued: 6-Mar-2023	Revised: None
Standard(s)	Furniture Power Distribution Units [UL 962A:2018 Ed.5+R:01Sep2020] Cord Reels And Multi-Outlet Assemblies [CSA C22.2#308:2018 Ed.2]		
Applicant	YA LI ELECTRIC CO LTD	Manufacturer 1	YA LI ELECTRIC CO LTD
Address	No 5 St Jiqianling District Jitigang Village Huang jiang Town DONGGUAN Guangdong 523000	Address	No 5 St Jiqianling District Jitigang Village Huang jiang Town DONGGUAN Guangdong 523000
Country	CHINA	Country	CHINA
Contact	Wu Haifeng	Contact	Wu Haifeng
Phone	86 18665133331	Phone	86 18665133331
FAX	-	FAX	-
Email	whfeng1976@163.com	Email	whfeng1976@163.com

2.0 Product Description	
Product	Furniture Power Distribution Unit
Brand name	YALI, YAMEIWAN, YUNHONG
Description	The products covered by this report are household furniture power distribution units for indoor used only. The product used for mounting above face onto a cabinet or similar furnitures. The product used with 5-15P power supply cord.
Models	YL-988-1, YL-986-1
Model Similarity	YL-988-1 is identical to YL-986-1 except USB module
Ratings	12A, 125VAC, 60Hz, Max.1500W
Other Ratings	For model YL-988-1: USB-A Output: DC 5V, 2A MAX 10W For model YL-986-1: USB-A Output 1: DC 5V, 2A MAX 10W USB-A Output 2: QC3.0 DC 5V, 3A; 9V, 2A; 12V, 1.5A MAX 18W Type-C Output 3: PD3.0 DC 5V, 3A; 9V, 2.22A; 12V, 1.67A MAX 20W

3.0 Product Photographs

Photo 1 - Side view of model YL-988-1

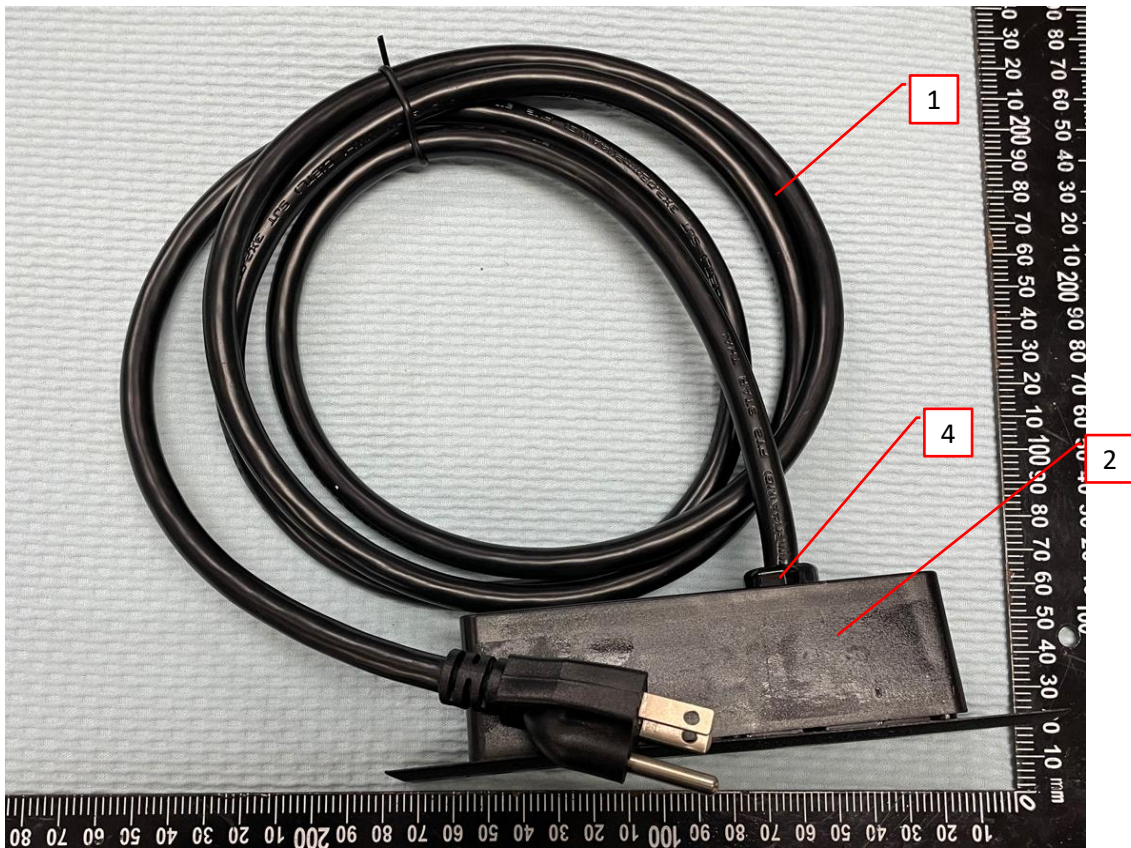


Photo 2 - Front view of model YL-988-1



3.0 Product Photographs

Photo 3 - Internal view of model YL-988-1

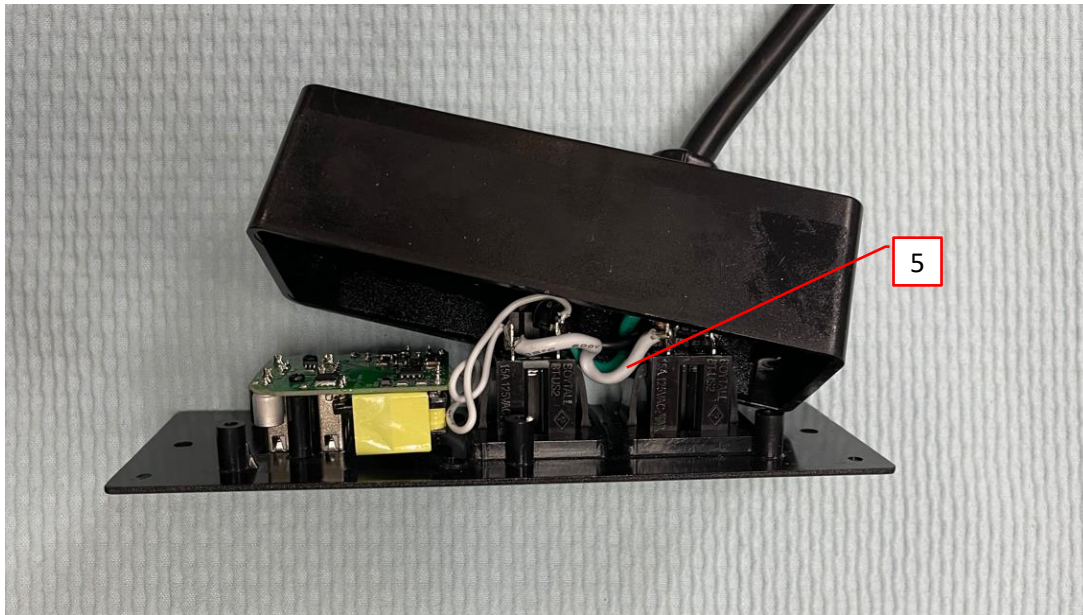
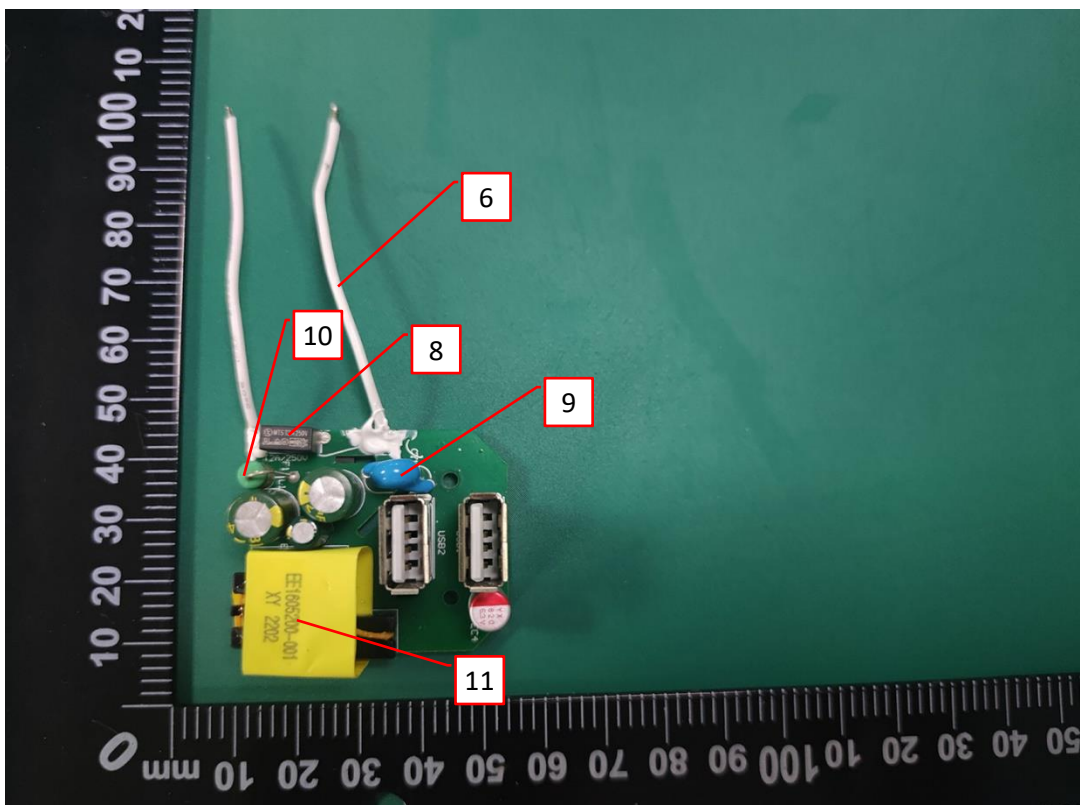


Photo 4 - PCB view of model YL-988-1



3.0 Product Photographs

Photo 5 - PCB view of model YL-988-1

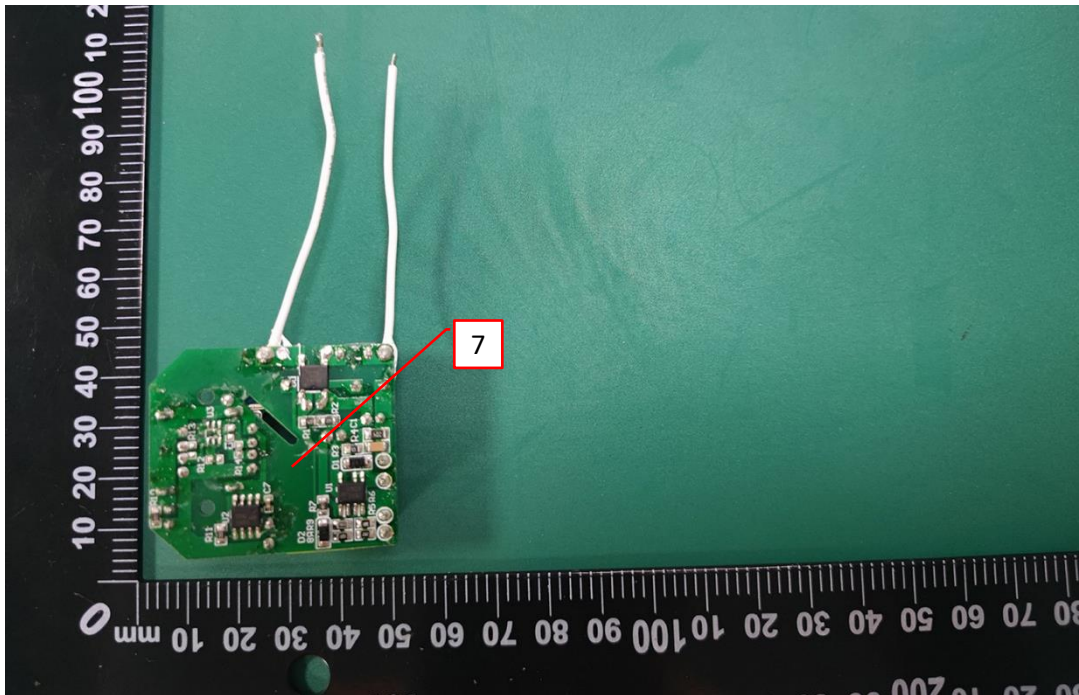
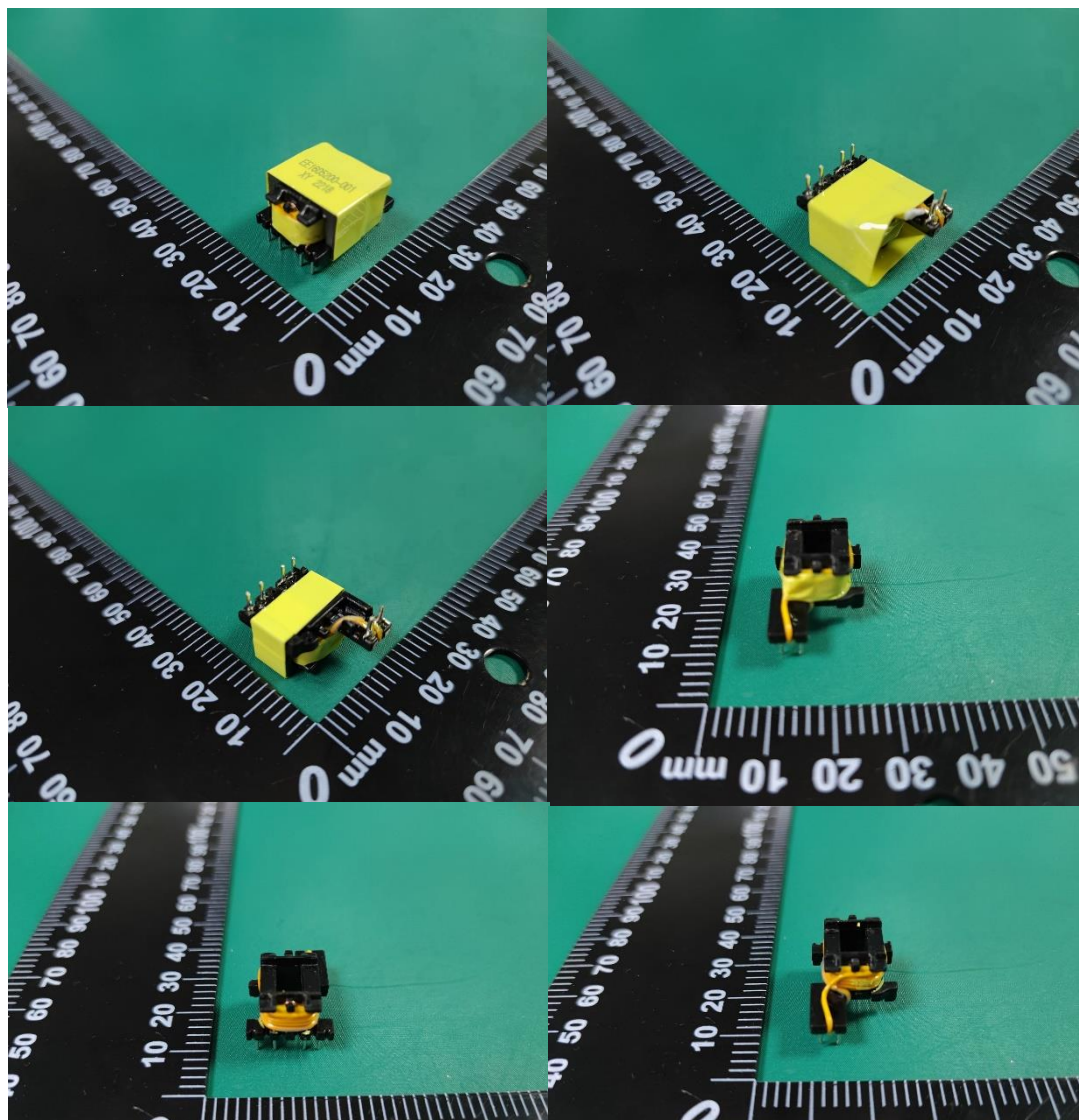


Photo 6 - Transformer view of model YL-988-1



3.0 Product Photographs

Photo 7 - Side view of model YL-986-1



Photo 8 - Front view of model YL-986-1



3.0 Product Photographs

Photo 9 - Internal view of model YL-986-1

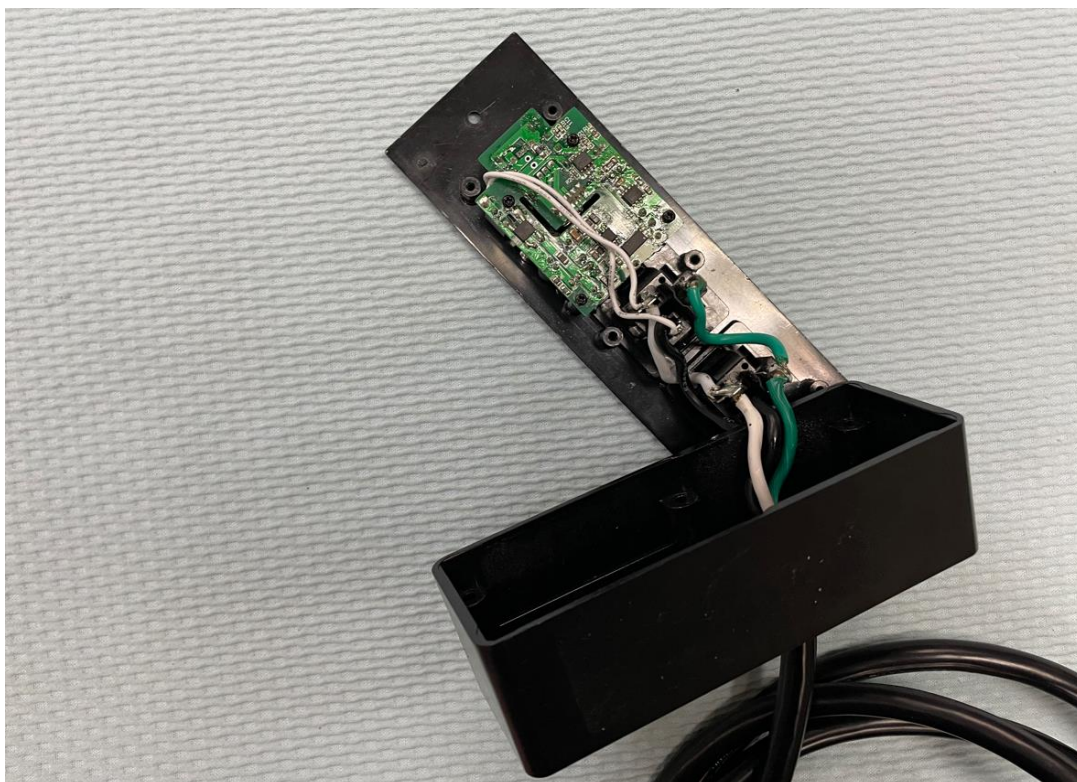
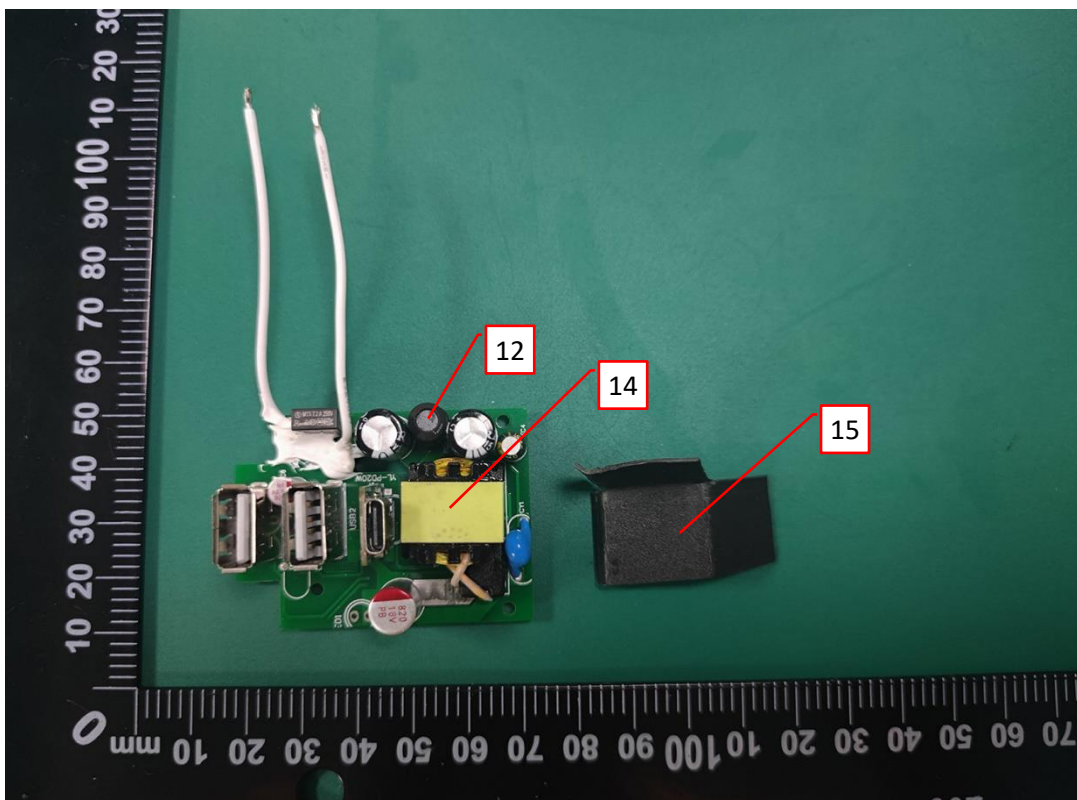
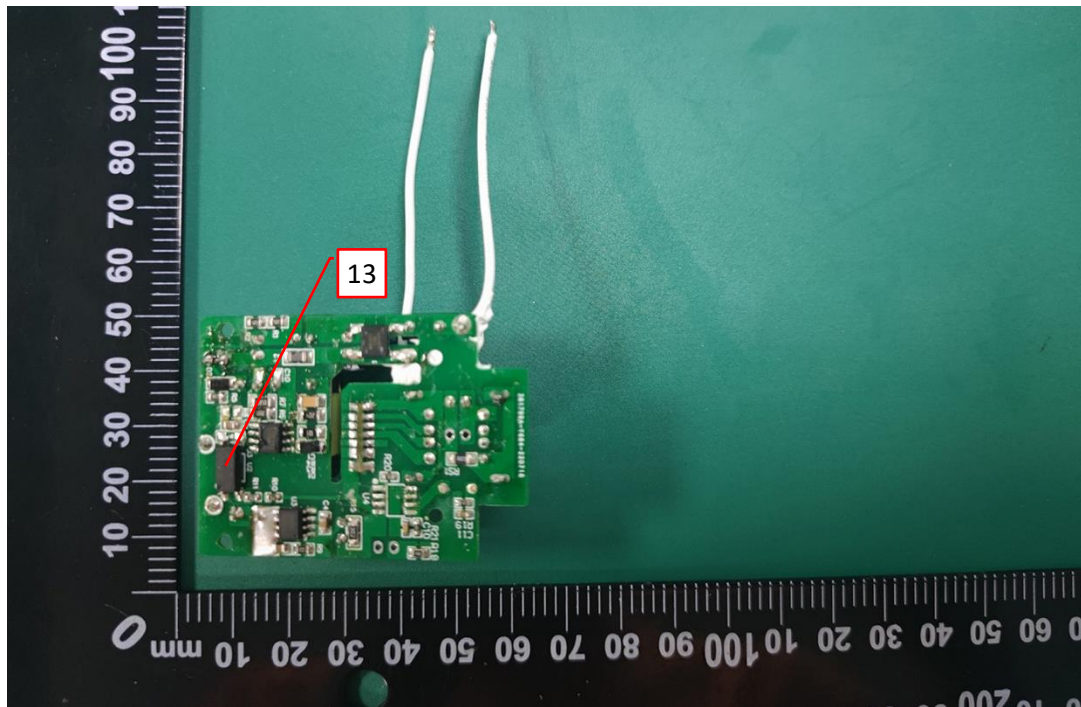


Photo 10 - PCB view of model YL-986-1



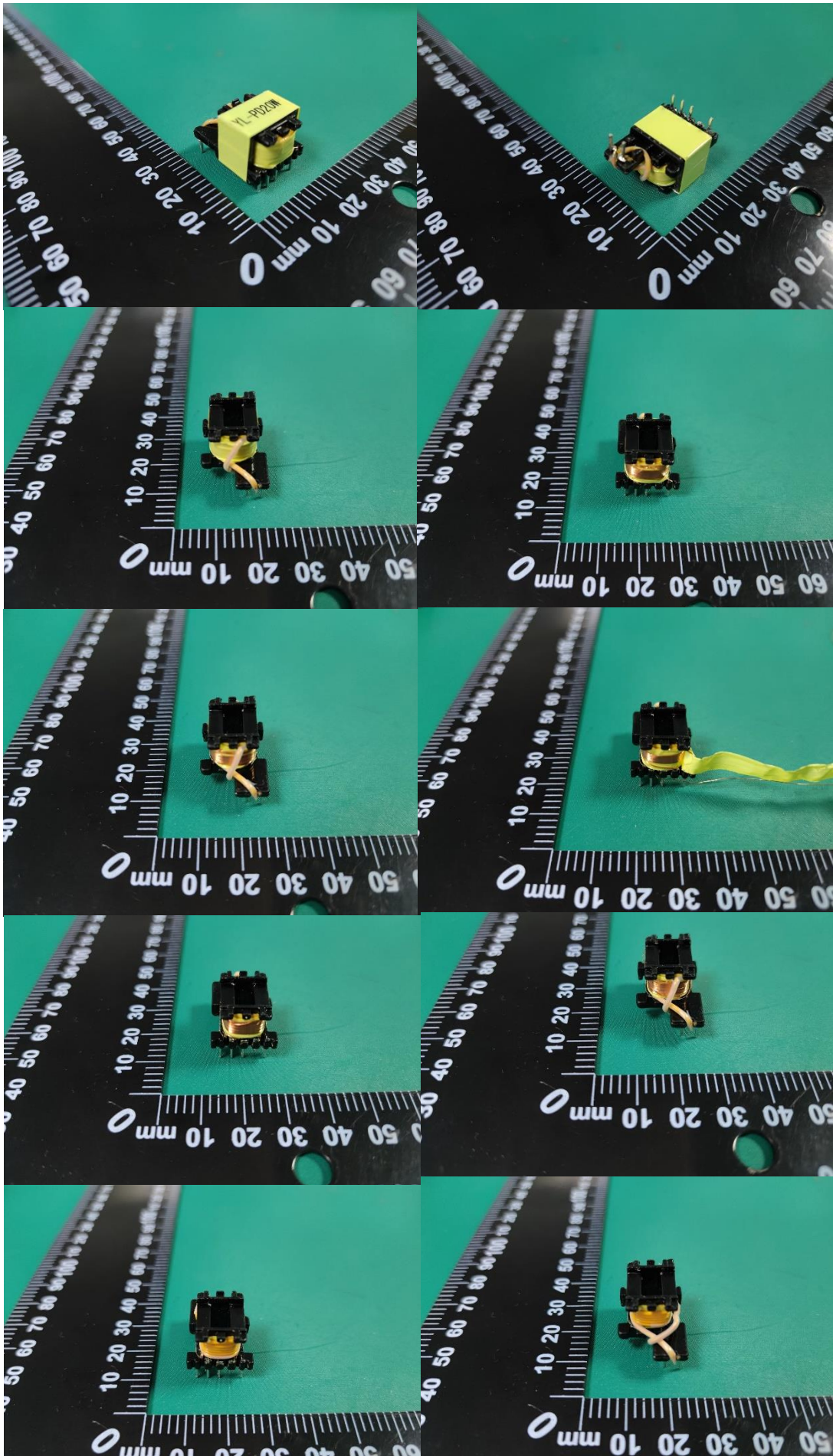
3.0 Product Photographs

Photo 11 - PCB view of model YL-986-1



3.0 Product Photographs

Photo 12 - Transformer view of model YL-986-1



4.0 Critical Components						
Photo #	Item no. ¹	Name	Manufacturer/ trademark ²	Type / model ²	Technical data and securement means	Mark(s) of conformity ³
1	1	Power supply cord	Various	Various	Nondetachable power-supply cord, 5-15P Plug with SJT,16AWG/3, finished length: 1.5ft~25ft.	cULus, cETLus
1	2	Enclosure	SABIC INNOVATIVE PLASTICS US LLC	RF-1005 Z270(f1)	PA66,BK color, Min.Thickness 1.4 mm. Rated 5VA, HWI=0, HAI=0, CTI=0, RTI 110°C	cURus
2	3	Receptacle	Guangdong Boytall Electronics Co., Ltd	BT-US2 BT-US2-A	5-15R, 15A 125V	cURus
1	4	Insulating Bushings	HEAVY POWER CO LTD	6N-4	Suitable for 16AWG/3 SJT	UR
3	5	Internal wires	Various	Various	Min.16 AWG, 300V, 105°C. Connecting to contacts terminals by hooking and soldering.	cURus, cETLus recognized
4	6	Internal lead wire	Various	1015	VW-1, Min. 18AWG, 105°C, 600V	cURus, cETLus recognized
5	7	PCB	Ganzhou Shengxin Circuit Technology Co Ltd	SX-2	V-0, 130°C, Min. 1.0mm thickness	cURus
			RUIBO ELECTRONIC TECHNOLOGY CO LTD	RB-1	V-0, 130°C, Min. 1.0mm thickness	cURus
			Various	Various	V-0, 130°C, Min. 1.0mm thickness	cURus
4	8	Fuse	Shenzhen Lanson Electronics Co. Ltd.	3K	T2A, 250Vac	cURus
			Dongguan Reomax Electronics Technology Co., Ltd.	MTS	T2A, 250Vac	cURus
			Dongguan Hongda Electronic Technology Co., Ltd.	31TD	T2A, 250Vac	cURus
			Dongguan Hongda Electronic Technology Co., Ltd.	2009	T2A, 250Vac	cURus
			Suzhou Walter Electronic Co. Ltd.	ICP	T2A, 250Vac	cURus
			Conquer Electronics Co., Ltd.	PTU	T2A, 250Vac	cURus
			XC Electronics (Shen Zhen) Corp. Ltd.	3T	T2A, 250Vac	cURus

4.0 Critical Components						
Photo #	Item no. ¹	Name	Manufacturer/ trademark ²	Type / model ²	Technical data and securement means	Mark(s) of conformity ³
			Dongguan Chevron Electronic Technology Co., Ltd.	3GT	T2A, 250Vac	cURus
			Dongguan Anlu Electronics Technology Co. Ltd.	AMT	T2A, 250Vac	cURus
4	9	Y capacitor	Macrofar Electronics Technology (HK) Limited	HY series	Max. 2200pF, Min. 250Vac, 125° C, Y1 type	cURus
			Dongguan QinHong (QNR) Electronic Technology Co., LTD	CT7	Max. 2200pF, Min. 250Vac, 125° C, Y1 type	cURus
			Shenzhen Teruixiang Electronic Co, Ltd.	TY	Max. 2200pF, Min. 250Vac, 125° C, Y1 type	cURus
			Hsuan Tai Electronic Co. Ltd.	CY series	Max. 2200pF, Min. 250Vac, 125° C, Y1 type	cURus
			Shenzhen Haotian Electronic Co., Ltd.	HT	Max. 2200pF, Min. 250Vac, 125° C, Y1 type	cURus
			GCE (Dongguan) Electronics Co., Ltd	GY1	Max. 2200pF, Min. 250Vac, 125° C, Y1 type	cURus
			Shenzhen Song Te Electronics Co., Ltd.	CT7	Max. 2200pF, Min. 250Vac, 125° C, Y1 type	cURus
4	10	Line Choke	Meled Electronics Co., Ltd.	AL-Series	130°C, 1000uH	NR
4	11	Transformer	DONGGUAN WINNER ELECTRONICS TECHNOLOGY CO LTD	EE1605200-001	Class B,Input:125V~, 60Hz Output:10W,refer to Sec.7 Illustration 3 for specification.	NR
4	11a	-Insulation Systems(Not shown)	Dongguan Winner Electronics Technology Co Ltd	SBI4.2	Class B Electrical Insulation Systems	UR
10	12	Line Choke	Dongguan Zenyyi Industrial Co., LTD	6611000011	130°C, 350uH	NR
11	13	Optical Isolators	Shenzhen Orient Components Co. Ltd.	ORPC817x	Reinforced insulation, Ext. Dcr ≥7.6mm, 110°C, Vini,a / Vini,b:4000Vpeak	UR
10	14	Transformer	Sichuan rongci Electronic Technology Co., Ltd	YL-PD20W	Class B,Input:125V~, 60Hz Output:20W,refer to Sec.7 Illustration 6 for specification.	NR

4.0 Critical Components						
Photo #	Item no. ¹	Name	Manufacturer/ trademark ²	Type / model ²	Technical data and securement means	Mark(s) of conformity ³
10	14a	-Insulation system (Not shown)	SUZHOU TAIHU ELECTRIC ADVANCED MATERIAL CO LTD	TaiHu 130-TM	Class B Electrical Insulation Systems	UR
10	15	Insulation sheet	SABIC INNOVATIVE PLASTICS B V	940(f1)(gg*)	V-0, 120°C, Min. 1.5mm thickness	cURus
1	16	label(Not shown)	Various	Various	Comply with UL 969, -40~80°C, suitable for PA66 surface.	cURus

NOTES:

- 1) Not all item numbers are indicated (called out) in the photos, as their location is obvious.
- 2) "Various" means any type, from any manufacturer that complies with the "Technical data and securement means" and meets the "Mark(s) of conformity" can be used.
- 3) Indicates specific marks to be verified, which assures the agreed level of surveillance for the component. "NR" - indicates Unlisted and only visual examination is necessary. "See 5.0" indicates Unlisted components or assemblies to be evaluated periodically refer to section 5.0 for details.

5.0 Critical Unlisted CEC Components

No Unlisted CEC components are used in this report.

6.0 Critical Features

Recognized Component - A component part, which has been previously evaluated by an accredited certification body with restrictions and must be evaluated as part of the basic product considering the restrictions as specified by the Conditions of Acceptability.

Listed Component - A component part, which has been previously Listed or Certified by an accredited Certification Organization with no restrictions and is used in the intended application within its ratings.

Unlisted Component - A part that has not been previously evaluated to the appropriate designated component standard. It may also be a Listed or Recognized component that is being used outside of its evaluated Listing or component recognition.

Critical Features/Components - An essential part, material, subassembly, system, software, or accessory of a product that has a direct bearing on the product's conformance to applicable requirements of the product standard.

Construction Details - For specific construction details, reference should be made to the photographs and descriptions. All dimensions are approximate unless specified as exact or within a tolerance. In addition to the specific construction details described in this Report, the following general requirements also apply.

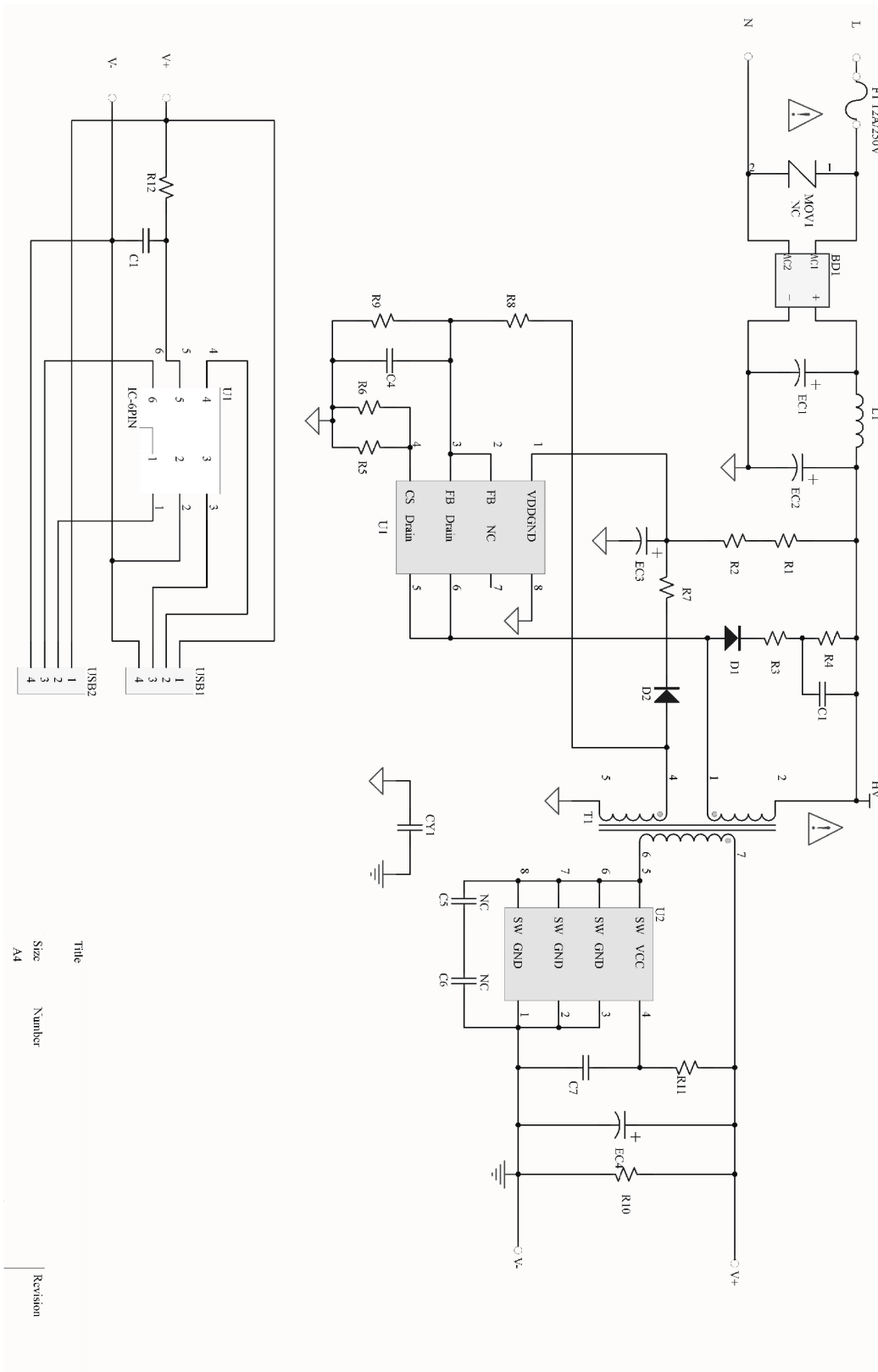
1. Spacing - In primary circuits, 1.6 mm minimum spacing are maintained through air and over surfaces of insulating material between any uninsulated live part and an uninsulated live part of opposite polarity, uninsulated grounded part other than the enclosure or exposed metal part and 6.4mm minimum between any uninsulated live part and the walls of a metal enclosure.
Between live parts and secondary circuit parts: Cl = 3.0 mm; Cr = 5.0 mm.
Between live parts and secondary circuit parts for transformer: Cl = 3.0 mm; Cr = 5.0 mm
2. Mechanical Assembly - Components such as switches, fuseholders, connectors, wiring terminals and display lamps are mounted and prevented from shifting or rotating by the use of lockwashers, starwashers, or other mounting format that prevents turning of the component.
3. Corrosion Protection - All ferrous metal parts are protected against corrosion by painting, plating or the equivalent.
4. Accessibility of Live Parts - All uninsulated live parts in primary circuitry are housed within an enclosure constructed with no openings other than those specifically described in Sections 4.
5. Grounding - All exposed dead-metal parts and all dead-metal parts within the enclosure that are exposed are connected to the grounding lead of the power supply cord.
6. Polarized Connection - This product is provided with a polarized power supply connection. All single pole switches and fuses are connected only to the ungrounded supply circuit conductor.
7. Internal Wiring - Internal wiring is routed away from sharp or moving parts. Internal wiring leads terminating in soldered connections are made mechanically secure prior to soldering. Recognized Component separable (quick disconnect) connectors of the positive detent type, closed loop connectors, or other types specifically described in the text of this report are also acceptable as internal wiring terminals. At points where internal wiring passes through metal walls or partitions, the wiring insulation is protected against abrasion or damage by plastic bushings or grommets.
8. Schematics - Refer to Illustration 1~6 for schematics requiring verification during Field Representative Inspection Audits.
9. Markings - The product is marked on a labeling system as described in item no. 16 of Section 4.0 or by a permanent method such as printing, painting, stamping or etching metal as follows:
 - a) The applicant's name or Brand name;
 - b) Model number, according to Sec. 2.0 ;
 - c) Ratings and other ratings, according to Sec. 2.0;
 - d) The date or other dating period of manufacture not exceeding any three consecutive months;
10. Cautionary Markings - The following are required:

CAUTION: To Reduce the Risk of Electric Shock -Use only indoor in dry locations.
Suitable for Household (Residential) use only.

ATTENTION: Pour réduire le risque de choc électrique -Utiliser uniquement à l'intérieur dans des endroits secs.
Convient pour l'usage domestique (résidentiel) seulement.
11. Installation, Operating and Safety Instructions - NA
12. Transformer - Supplier records must be provided that indicate the received shipment of transformers (section 4.0, items 11 and 14) was constructed as indicated in Section 7 Illustrations 3 and 6. These records must be available at the factory for inspection on every received shipment.

7.0 Illustrations

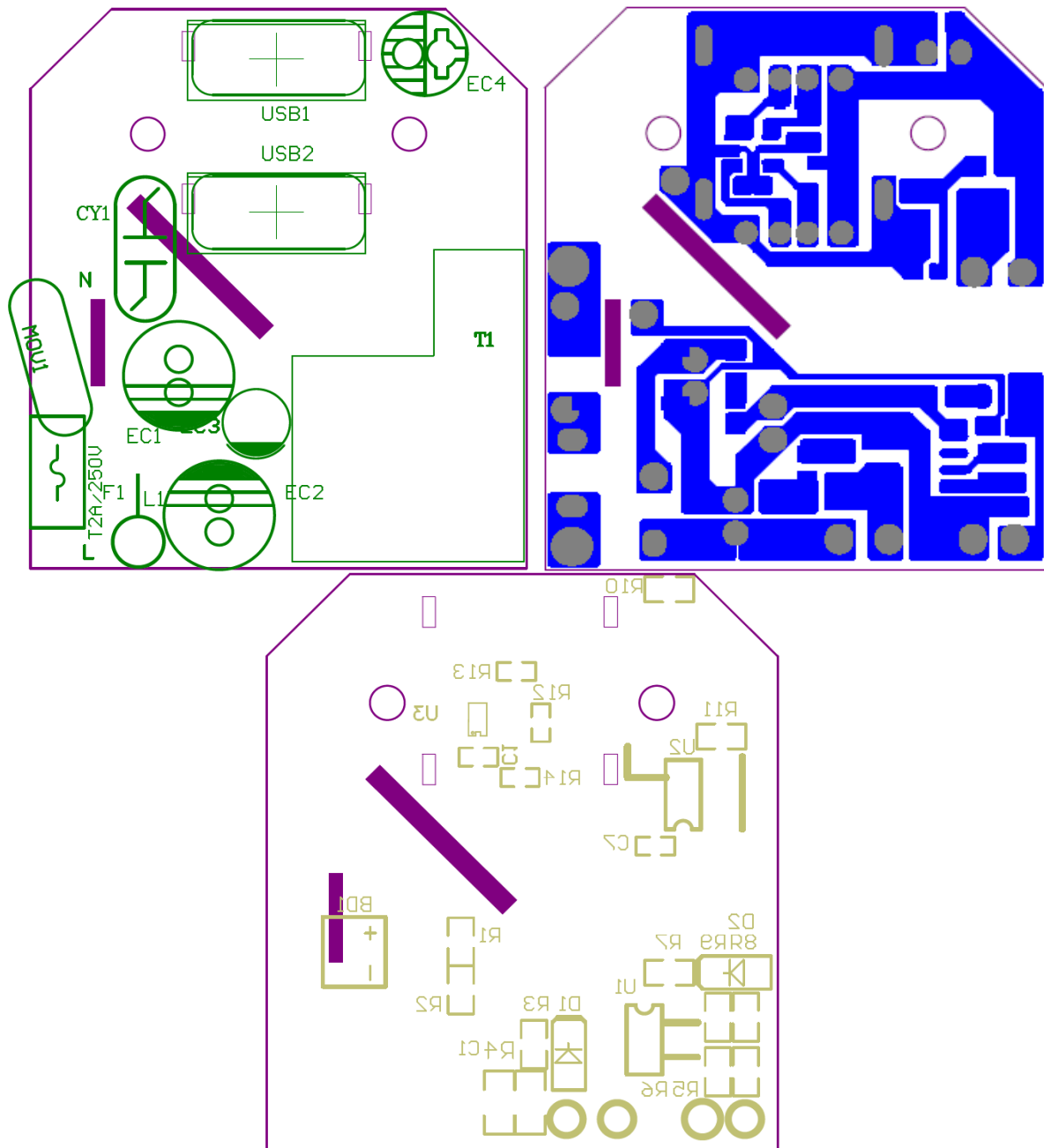
Illustration 1 - Schematic of Building-in USB unit for model YL-988-1



Title	Size	Number	Revision
	A4		

7.0 Illustrations

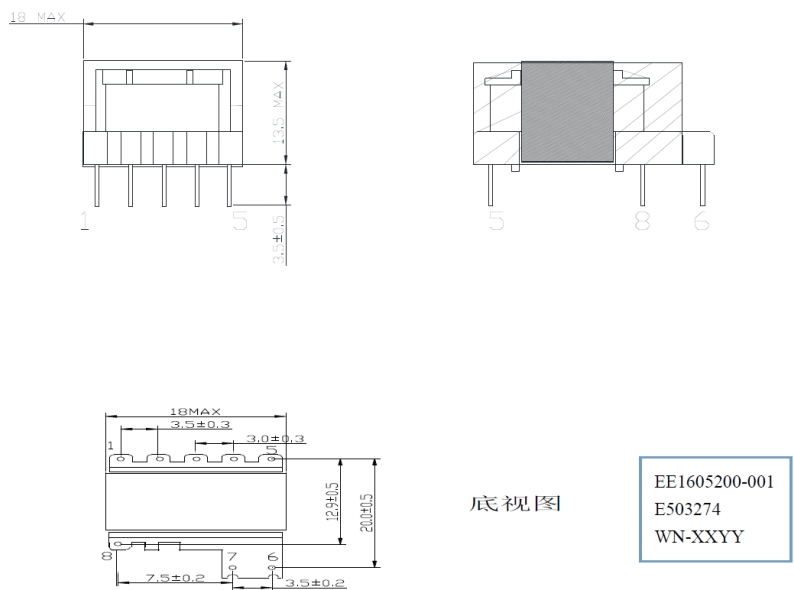
Illustration 2 - PCB layout of Building-in USB unit for model YL-988-1



7.0 Illustrations

Illustration 3 - Specification of transformer for model YL-988-1

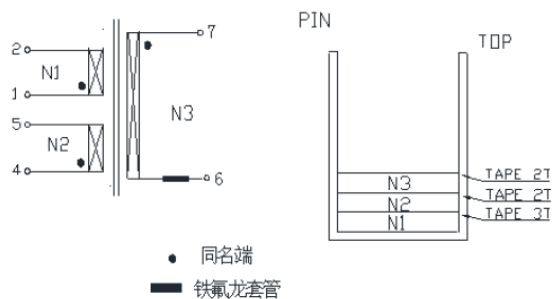
1: 外形尺寸 (OUTLINE DIMENSION) : (UNITS: mm)



- 备注 1. 磁芯用 8mm 胶带包 3 圈固定. 成品外围再沿磁芯用 15.5mm 胶带包 2TS.
- 2. 骨架槽宽 5mm Min 成品空 3.8 脚, 磁芯 EE16 加宽 AE=32
- 3. 产品需真空含浸.

2: 原理图 (SCHEMATIC) :

3: 剖面示意图 (WINDING DIAGRAM) :



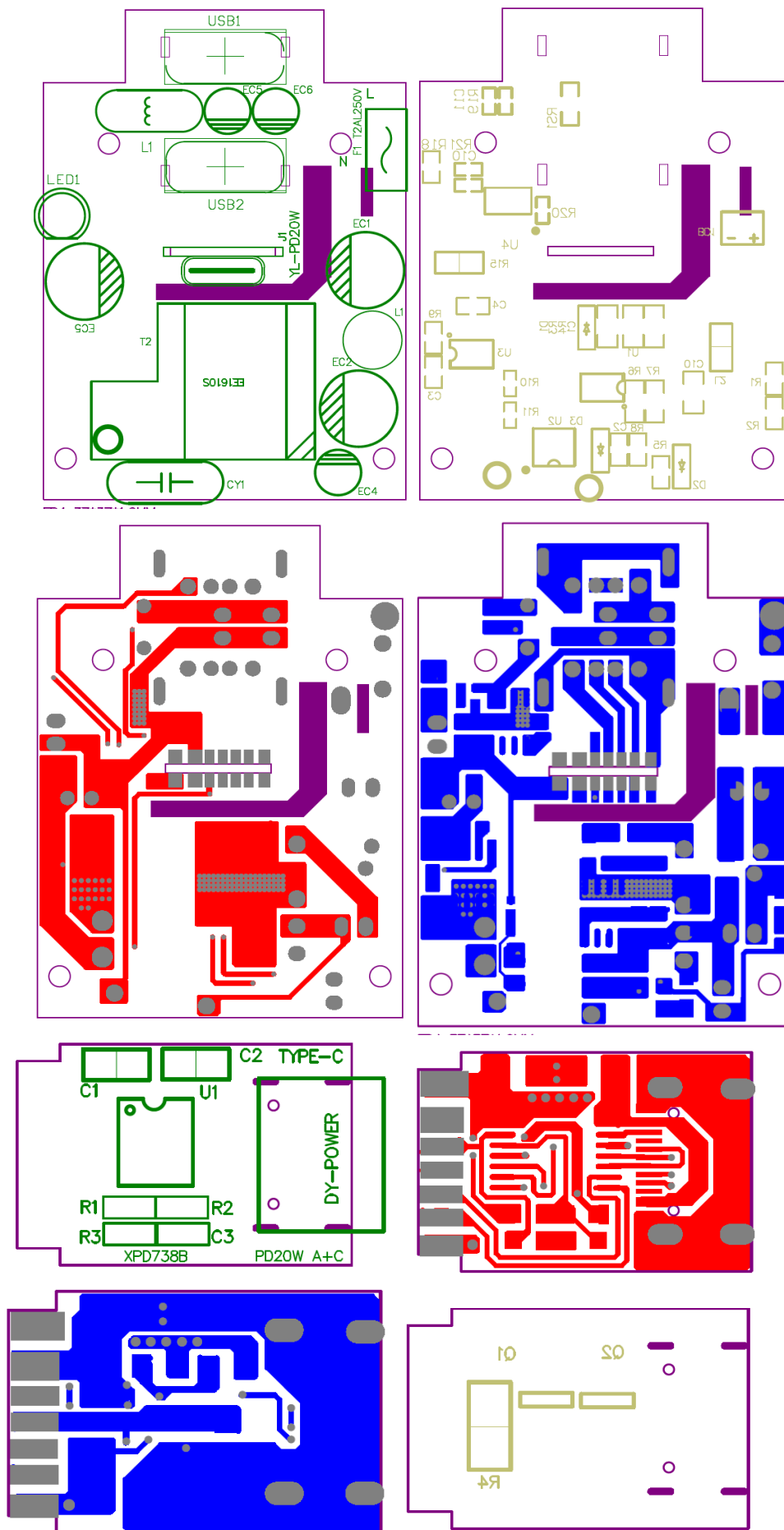
4. 绕组 (WINDING) :

步序 STEP	绕组 WINDING	进线脚 START	出线脚 FINISH	线径/规格 MA ERI	圈数 TRUNS	胶带 层数 TAPE	备注 NOTES
1	N1	1	2	2UEW--0.18x1P	63 TS	2TS	密绕
2	N2	4	5	2UEW--0.18 2P	11 TS	2TS	密绕
3	N3	7	6	TIW-M—0.65X1P	4 TS	3TS	密绕
4							

- 注一. N1N2N3 针脚朝右顺绕
- 二. 线包用深黄色胶带.

7.0 Illustrations

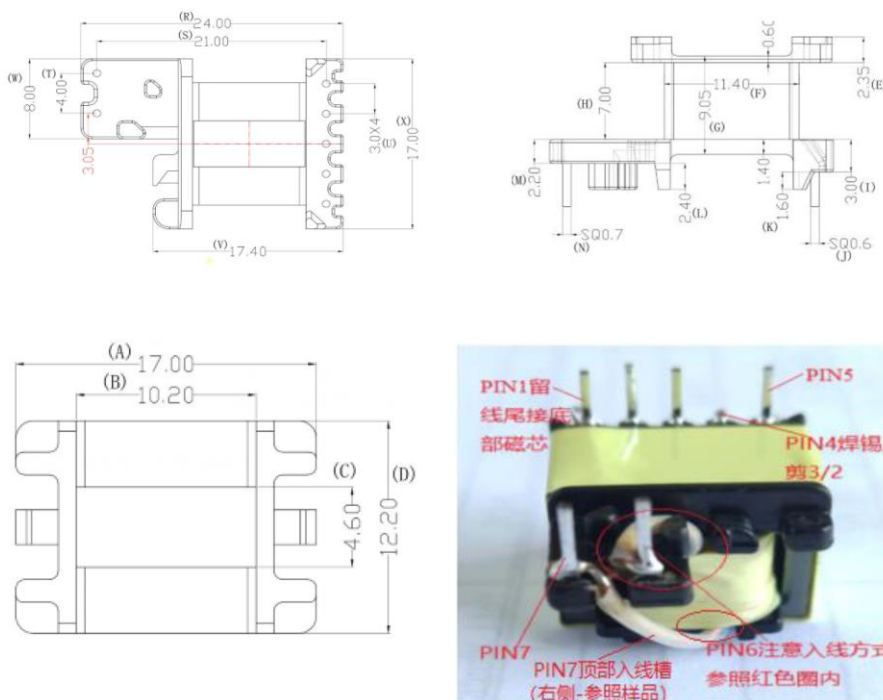
Illustration 5 - PCB layout of Building-in USB unit for model YL-986-1



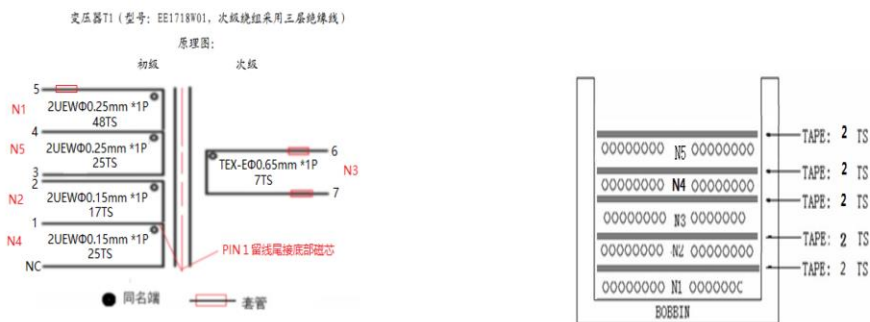
7.0 Illustrations

Illustration 6 - Specification of transformer for model YL-986-1

1、PHYSICAL DIMENSION (UNIT:mm) 外观尺寸图



二：电路原理图





四：绕制方法:

绕组	进出端口	漆包线规格	绕制圈数	胶带	备注
N1	⑤--4	2UEWΦ0.25mm *1P	48TS	2	PIN 朝外逆时针密绕 2 层
N2	2--1	2UEWΦ0.15mm *1P	17TS	2	PIN 朝外逆时针散绕 1 层
N3	⑥--⑦	TIW-2SΦ0.65mm *1P	7TS	2	PIN 朝外逆时针密绕 1 层
N4	1--NC	2UEWΦ0.15mm *1P	25TS	2	PIN 朝外逆时针密绕 1 层
N5	4--3	2UEWΦ0.25mm *1P	25TS	2	PIN 朝外逆时针密绕 1 层多

1. PIN4 焊锡后剪 3/2; 2. PIN5 走小线槽; 3. PIN1 留线尾接底部磁芯;

4. PIN7 收线先挂顶部线槽内 (右侧-顶部靠 PIN6 边线槽), 待 N5 绕完线包胶带后再悬空挂回 PIN7 脚;

8.0 Test Summary			
Evaluation Period	4-Dec-2022~23-Jan-2023		Project No. 221117010GZU
Sample Rec. Date	4-Dec-2022	Condition Prototype	Sample ID. S221117010-001~012
Test Location	Intertek Testing Services Shenzhen Ltd. Guangzhou Branch. Room 02, &101/E201/E301/E401/E501/E601/E701/E801 of Room 01 1-8/F., No. 7-2, Caipin Road, Science City GETDD Guangzhou, Guangdong, China		
Test Procedure	Testing Lab		
Determination of the result includes consideration of measurement uncertainty from the test equipment and methods. The product was tested as indicated below with results in conformance to the relevant test criteria.			
The following tests were performed:			
Test Description	UL 962A:2018 Ed.5+R:01Sep2020 Clause	CSA C22.2 No.308:2018 Ed.2 Clause	UL 62368-1:2019 Ed.3+R:22Oct2021 & CSA C22.2#62368-1:2019 Ed.3 Clause
Temperature Test	29	8.6	--
Dielectric Voltage-Withstand Test	30	8.3	--
Leakage Current Test	31	8.7	--
Grounding Continuity Test	32	--	--
Strain Relief Test	36	8.29	--
Push Back Relief Test	37	--	--
Impact test	38	8.2	--
Crushing Test	39	8.19	--
Adequacy of Mounting Test	40	8.28	--
Mold Stress-Relief Distortion Test	42	8.15	--
Spill Test	43	--	--
10 N steady force test	--	--	4.6.2
Classification of electrical energy sources	--	--	5.2
Temperature test for insulating materials and touch temperature	--	--	5.4.1.4, 9.3
Determination of working voltage test	--	--	5.4.1.8
Clearances and creepage distances measurement	--	--	5.4.2, 5.4.3
Solid insulation measurement	--	--	5.4.4
Antenna terminal insulation test	--	--	5.4.5
Electric strength test	--	--	5.4.9
Unearthed accessible parts touch current test	--	--	5.7.4
Electrical power sources (PS) measurements for classification	--	--	6.2.2
Input test	--	--	B.2.5
Operating temperature measurement	--	--	B.2.6
Simulated abnormal operating conditions test	--	--	B.3
Simulated single fault conditions test	--	--	B.4
Limited power source test	--	--	Q.1
Steady force test – 10 N	--	--	T.2
Component testing reviewer	--	--	Kady Qin

8.0 Test Summary			
8.1 Signatures			
A representative sample of the product covered by this report has been evaluated and found to comply with the applicable requirements of the standards indicated in Section 1.0.			
Completed by:	Ron Chen	Reviewed by:	Sunny Tang
Title:	Engineer	Title:	Reviewer
Signature:		Signature:	

9.0 Correlation Page For Multiple Listings

The following products, which are identical to those identified in this report except for model number and Listee name, are authorized to bear the ETL label under provisions of the Intertek Multiple Listing Program.

BASIC LISTEE	YA LI ELECTRIC CO LTD
Address	No 5 St Jiqianling District Jitigang Village Huang jiang Town DONGGUAN Guangdong 523000
Country	CHINA
Product	Furniture Power Distribution Unit

MULTIPLE LISTEE 1	None
Address	
Country	
Brand Name	

ASSOCIATED MANUFACTURER	
Address	
Country	

MULTIPLE LISTEE 1 MODELS	BASIC LISTEE MODELS

MULTIPLE LISTEE 2	None
Address	
Country	
Brand Name	

ASSOCIATED MANUFACTURER	
Address	
Country	

MULTIPLE LISTEE 2 MODELS	BASIC LISTEE MODELS

MULTIPLE LISTEE 3	None
Address	
Country	
Brand Name	

ASSOCIATED MANUFACTURER	
Address	
Country	

MULTIPLE LISTEE 3 MODELS	BASIC LISTEE MODELS

10.0 General Information

The Applicant and Manufacturer have agreed to produce, test and label ETL Listed products in accordance with the requirements of this Report. The Manufacturer has also agreed to notify Intertek and to request authorization prior to using alternate parts, components or materials.

COMPONENTS

Components used shall be those itemized in this Intertek report covering the product, including any amendments and/or revisions.

LISTING MARK

The ETL Listing mark applied to the products shall either be separable in form, such as labels purchased from Intertek, or on a product nameplate or other media only as specifically authorized by Intertek. Use of the mark is subject to the control of Intertek.

The mark must include the following four items:

- 1) applicable country identifiers "US" and/or "C" or "US", "C" and "EU"
- 2) the word "Listed" or "Classified" or "Recognized Component" (whichever is appropriate)
- 3) a control number issued by Intertek
- 4) a product descriptor that identifies the standards used for certification. Example:

For US standards, the words, "Conforms to" shall appear with the standard number along with the word, "Standard" or "Std." Example: "Conforms to ANSI/UL Std. XX."

For Canadian standards, the words "Certified to CAN/CSA Standard CXX No. XX." shall be used, or abbreviated, "Cert. to CAN/CSA Std. CXX No. XX."

Can be used together when both standards are used.

If all standards on the ATM have the same standard title, the shared title or its abbreviation may be used in place of the examples above. Example: "Medical Electrical Equipment" or "MEE"; "Information Technology Equipment" or "ITE"; "Audio/Video Information And Communication Technology Equipment" or "A/V ICTE".

Note: A facsimile must be submitted to Intertek, Attn: Follow-up Services for approval prior to use.

The facsimile need not have a control number. A control number will be issued **after signed Certification Agreements** have been received by the Follow-up Services office, approval of the facsimile of your proposed Listing Mark, satisfactory completion of the Listing Report, and scheduling of a factory assessment in your facility.

MANUFACTURING AND PRODUCTION TESTS

Manufacturing and Production Tests shall be performed as required in this Report.

FOLLOW-UP SERVICE

Periodic unannounced audits of the manufacturing facility (and any locations authorized to apply the mark) shall be scheduled by Intertek. An audit report shall be issued after each visit. Special attention will be given to the following:

1. Conformance of the manufactured product to the descriptions in this Report.
2. Conformance of the use of the ETL mark with the requirements of this Report and the Certification Agreement.
3. Manufacturing changes.
4. Performance of specified Manufacturing and Production Tests.

In the event that the Intertek representative identifies non-conformance(s) to any provision of this Report, the Applicant shall take one or more of the following actions:

1. Correct the non-conformance.
2. Remove the ETL Mark from non-conforming product.
3. Contact the issuing product safety evaluation center for instructions.

10.1 Evaluation of Unlisted Components

Because Unlisted Components are uncontrolled, and they do not fall under a third party follow up program, Intertek may require these components to be tested and/or evaluated at least once annually, more often for certain components, as part of the independent certification process. The Unlisted Components in Section 5.0 require testing and/or evaluation as indicated.

The Applicant will be notified, in writing, via the applicable contact methods, as defined in Section 1.0, when these components must be selected and sent to Component Evaluation Center (CEC) for re-evaluation.

Due to particular testing requirements, some components may be requested to be shipped to specific labs. Thus, specific shipment destination(s) for each sample will be provided in the written notification.

Managing CEC Location:

Intertek Testing Services Shenzhen Limited Guangzhou Branch

ETL Component Evaluation Center

Room 02, &101/E201/E301/E401/E501/E601/E701/E801 of Room 01 1-8/F., No. 7-2,

Caipin Road, Science City

GETDD Guangzhou, Guangdong, China

Attn: Ms. Joey Kuang

Sample Disposition: Due to the destructive nature of the testing, all samples will be discarded at the conclusion of testing unless, the manufacturer specifically requests the return of the samples. The request for return must accompany the initial component shipment.

11.0 Manufacturing and Production Tests

The manufacturer agrees to conduct the following Manufacturing and Production Tests as specified:

Required Tests

Dielectric Voltage-Withstand Test, Grounding Continuity Test

11.1 Dielectric Voltage Withstand Test

Method

One hundred percent of production of the products covered by this Report shall be subjected to a routine production line dielectric withstand test.

The test shall be conducted on products, which are fully assembled. Prior to applying the test potential, all switches, contactors, relays, etc., should be closed so that all primary circuits are energized by the test potential. If all primary circuits cannot be tested at one time, then separate applications of the test potential shall be made.

The test voltage specified below shall be applied between primary circuits and accessible dead-metal parts. The test voltage may be gradually increased to the specified value but must be maintained at the specified value for one second or one minute as required.

Test Equipment

The test equipment shall incorporate a transformer with an essentially sinusoidal output, a means to indicate the applied test potential, and an audible and/or visual indicator of dielectric breakdown.

The test equipment shall incorporate a voltmeter in the output circuit to indicate directly the applied test potential if the rated output of the test equipment is less than 500VA.

If the rated output of the test equipment is 500VA or more, the applied test potential may be indicated by either:

- 1 - a voltmeter in the primary circuit;
- 2 - a selector switch marked to indicate the test potential; or
- 3 - a marking in a readily visible location to indicate the test potential for test equipment having a single test potential output.

In cases 2 and 3, the test equipment shall include a lamp or other visual means to indicate that the test potential is present at the test equipment output. All test equipment shall be maintained in current calibration.

Products Requiring Dielectric Voltage Withstand Test:

<u>Product</u>	<u>Test Voltage</u>	<u>Test Time</u>
All products covered by this Report.	1250V ac	60 s
	or 1500V ac	1 s
One sample from each shipment of section 4.0 items 11 and 14 Between prim. and sec. output	3000 V AC	1 s
	Between prim. and core	1500 V AC

11.2 Grounding Continuity Test

Method

Each product shall be tested, as a routine production-line test, to determine grounding continuity between the grounding terminal and the accessible, dead-metal parts of the product that become energized. The grounding contact of each receptacle are included in this test.

Test Equipment

Compliance with above is determined by any appropriate device, such as an ohmmeter or a battery and buzzer combination, applied between the point of connection of the grounding means and the metal parts in question.

Products Requiring Grounding Continuity Test:

All products covered by this Report.

