



GENERAL DESCRIPTION:

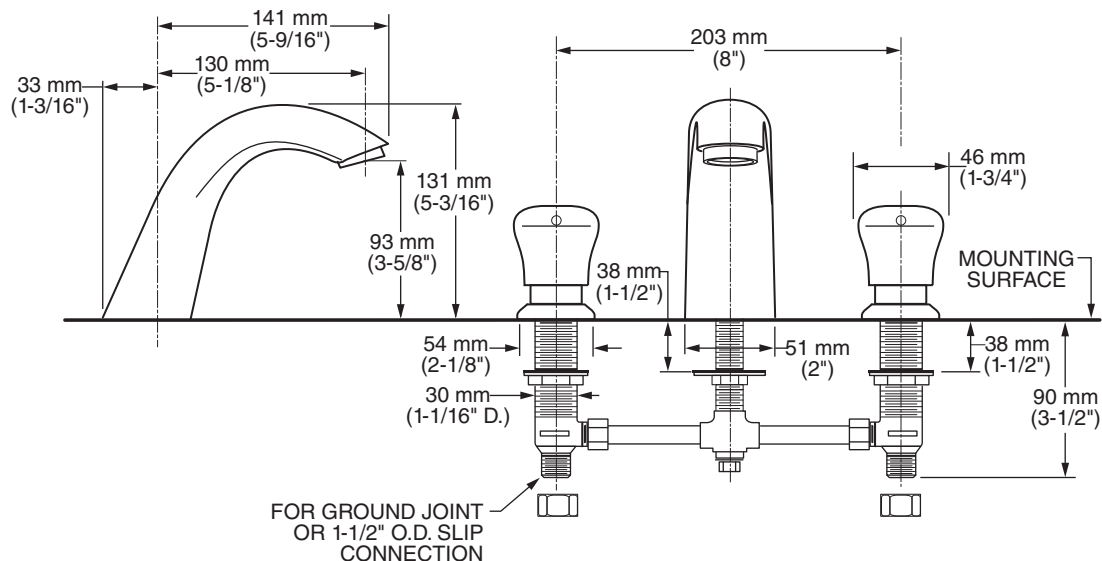
Metering widespread faucet. Vandal-resistant solid brass construction. Easy-push handles. Water conserving pressure compensating 1.0 GPM vandal-resistant aerator. Factory set for a maximum of 0.17 gallon flow per activation. Replaceable cartridge. Adjustable flow cycle.

MODEL NUMBER:

- **1340.825** Widespread, 1.0 GPM pressure compensating vandal-resistant aerator.

PRODUCT FEATURES:

- **Pressure Compensating Aerator:** Provides a constant water flow of 1.0 gpm throughout the pressure range.
- **Vandal-Resistant Brass Construction and Aerator:** Durable - Excellent in high use applications.
- **Automatic Shut-off:** Stops water and energy waste. Ideal for public restrooms where uncontrolled water usage is costly.
- **Meets ADA Standard:** Requires less than 5 lbs. of operating force to initiate flow per ANSI A117.1.
- **Adjustable Flow Cycle**
- **Replaceable Valve Cartridge:** Facilitates simple replacement.
- **Hot/Cold Button Indicators**
- **Meets CALGreen**
- **Lead Free:** Faucet contains $\leq 0.25\%$ total lead content by weighted average.
- **Minimum Operating Pressure:** 20 psi



SUGGESTED SPECIFICATION

Metering faucet shall feature a vandal-resistant brass construction with a replaceable valve cartridge and an adjustable flow cycle. Shall also feature a water-conserving, pressure compensating 1.0 gpm/3.8L/min vandal-resistant aerator. Factory set to maintain flow below the maximum 0.17 gallons per cycle required by ANSI A112.18.1M. Push button activator shall meet ANSI A117.1 Standard. Fitting shall be American Standard Model # 1340.825.002.

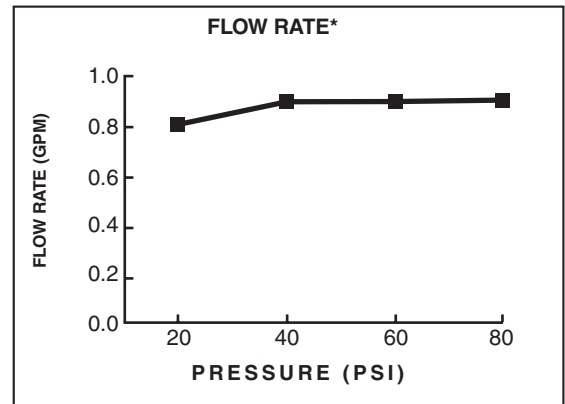


METERING FAUCETS CONVENTIONAL WIDESPREAD 1.0 GPM

CODES AND STANDARDS

These products meet or exceed the following codes and standards:

ANSI A117.1
ASME A112.18.1
CSA B125
NSF 372



Meets the American Disabilities Act Guidelines
ANSI A117.1 Requirements for the accessible
and usable building facilities - check local codes.

Other Aerators Available:

| Part Suffix | Description |
|-------------|--|
| V15 | 1.5 gpm (5.7 Lpm) PCA Vandal-Resistant Aerator |

*PCA - Pressure Compensating

PART OF **LIXIL**