

WALL STICKER

INSTRUCTION GUIDE

WALL STICKERS

- * Choose where is your desired placement. Start with a smooth clean and dry surface.
- * Plan where you put the part of sticker. Simply peel off from backing paper.
- * Take out the image from the backing paper. Rub it with soft cloth or plastic card.

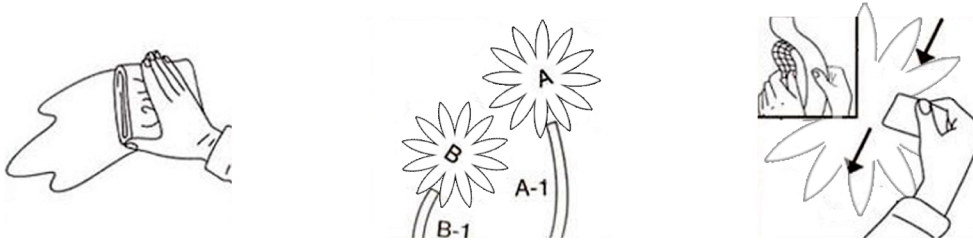


PHOTO FRAME STICKERS

- * Clean the smooth surface where you're going to apply the stickers thoroughly, and leave it to dry.
- * Measure the photo and cut it to fit the frame size.
- * Put the photo on the sticker first.
- * Put the sticker with photo on the wall.
- * Rub it with soft cloth to remove the bubbles.

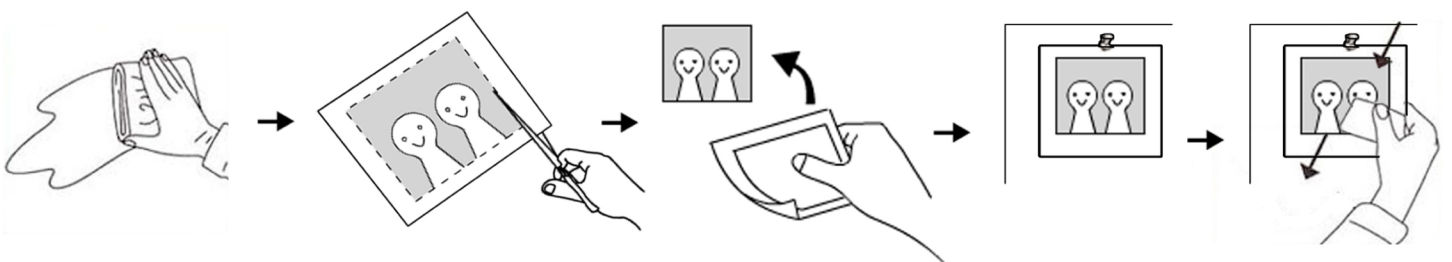


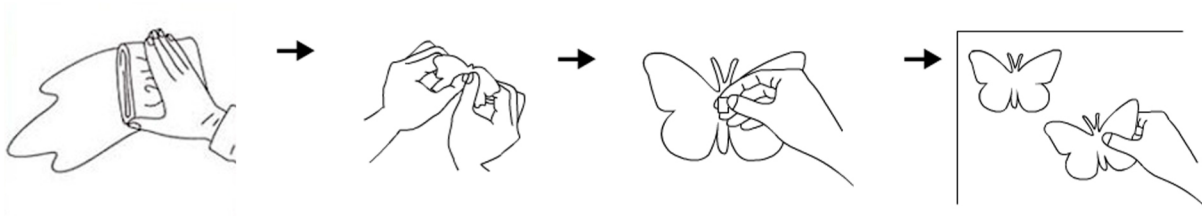
PHOTO FRAME STICKERS CUTTING IN THE MIDDLE

- * Clean the smooth surface where you're going to apply the stickers thoroughly, and leave it to dry.
- * Measure the photo and cut it to a size slightly bigger than the black frame size.
- * Put the photo on the frame sticker first.
- * Put the sticker with photo on the wall.
- * Put the translucent sticker in the middle to protect the photo.
- * Rub it with soft cloth to remove the bubbles.



3D BUTTERFLIES

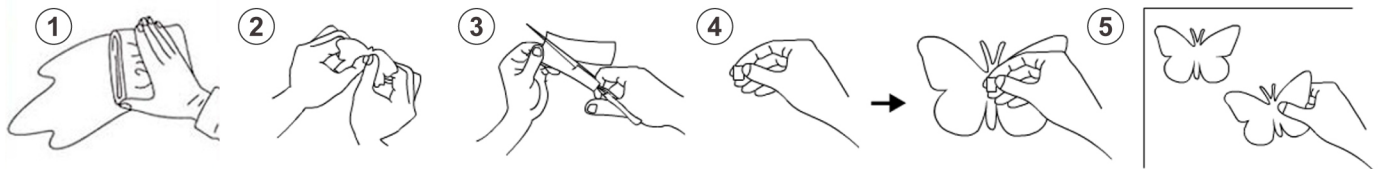
- Clean the surface where you are going to apply the sticker to thoroughly. Make sure the surface is completely smooth; otherwise, it may fall off easily.
- Fold wings to 35° to create 3D effect.
- Peel off the double sided tape.
- Position the 3D Butterfly onto your wall.
- Finally, press the 3D Butterfly.



3D COLOURFUL BUTTERFLIES

Self-Adhesive Butterflies

- Clean the surface thoroughly; Make sure the surface is smooth; Otherwise, it may fall off.
- Fold the wings to 35° to create 3D effect.
- Cut the double sided tapes provided and place them to the back of butterflies.
- Position the 3D butterflies onto the wall.
- Finally, press the 3D butterflies.



Magnetic Butterflies

- Clean the surface thoroughly; Make sure the surface is smooth; Otherwise, it may fall off.
- Fold the wings to 35° to create 3D effect.
- Finally, place the butterflies directly on metal or equivalent surfaces.