

MURAL WALLPAPER

PEEL & STICK MURAL WALLPAPER INSTALLATION

Before you begin!

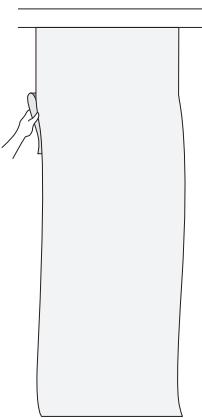
The DO's

- Apply on finished surfaces only (i.e. primed and painted walls).
- Apply to room temperature surfaces (~68 degrees F, or 20 degrees C).
- Wait at least 30 days before applying to newly painted walls.
- Wash and completely dry your hands before application.
- After applying each sheet, smooth over entire area with pressure, [paying special attention to the edges](#).
- Unroll the sheets and lay them out in the room they will be installed in. Allow them to adjust to the room temperature for a day or two.

The DON'Ts

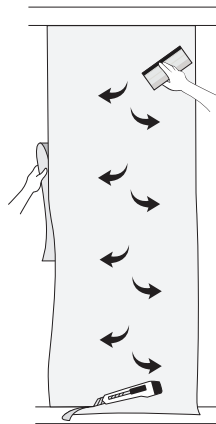
- Do not apply to unfinished surfaces (i.e. bare concrete).
- Do not apply to cold surfaces.
- Do not apply to freshly painted walls. [Please wait 30 days before applying to freshly painted walls](#). The sign industry concerning peel and stick material has reached a general consensus on this. Regardless of which wallpaper/mural vendor you choose, you need to wait 30 days to let the walls off gas before trying to stick anything to them.
- For walls that have [not yet](#) been painted, you can use Roman Pro-543 clear adhesion primer which allows you to install wallpaper after 24 hours.

Murals are numbered at the bottom of each sheet. For multiple sheets, start by installing sheet #1 at the left side of the wall. Move across to the right for each additional sheet.



Step 1

Remove about 12 inches of the backing from the first sheet of wallpaper. Apply from the top of the wall or desired area first.



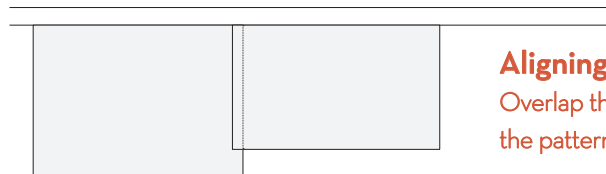
Step 2

Using a squeegee, put pressure on the wallpaper to activate the adhesive and smooth the section of wallpaper from top down, and from center outwards (see diagram). Remove the remaining backing as you go down. Use a squeegee to remove any trapped air bubbles before applying the next piece.

If you see an air pocket form, pull back the wallpaper up past the air pocket and reapply using a squeegee.

Once all sheets have been applied, trim any excess wallpaper as needed with an X-ACTO knife or other sharp craft knife.

Repeat steps 1 & 2 for additional sheets.



Aligning the sheets

Overlap the next sheet slightly, to match the pattern (approx 0.25 inches)

Troubleshooting

- What to do if you see air pockets during or after installation: pull back the wallpaper up to the air pocket and reapply using a squeegee.

Handle with Care

- If you need to spot clean, wipe gently with a moist cloth. You can use a mild non-abrasive cleaner if needed but always test a hidden spot first.

*If you need to order additional sheets, please take note of IF and WHEN the design repeats. Here is an example: you ordered 4 sheets and find that you actually need 6 sheets to cover your wall. If your design repeats every 5 sheets, you will need to order sheet #5 and sheet #1.



MURAL WALLPAPER

We are so happy to have made this wallpaper especially for you!

IMPORTANT

Please follow our instructions carefully to ensure easy application and optimal wall adhesion.

1. Before Installation

- Check that the wall has been primed and / or painted.
- If the wall was recently painted, please wait 30 days to make sure the paint has completely outgassed.
- If the wallpaper is applied to a dirty or dusty wall, the strength of the adhesive will be compromised and the wallpaper may not completely adhere to your wall.
- For an easier installation use ROMAN EZ-HANG

2. Prep the Wall

- Use a Lint-Free Towel
- Mix 70% isopropyl alcohol with 30% water. The alcohol must be diluted or it will cause issues such as bubbling. Make sure you clean the wall thoroughly. You may see a bit of paint on the towel.
- Wait until it flashes off (dries) and **repeat 2 more times** to obtain maximum strength
- Wait 15 minutes (dries) and then complete your installation.

Attention: Regardless of whose product you use, if you plan on using ANY peel and stick or NON permanent adhesive product over a baby's crib, PLEASE take ALL precautions to make sure the product will stay on the wall in case of a wall incompatibility. This means using an additional permanent double stick tape at the tops of the panels and/or special wall-paper primer prior to installing the wallpaper. Definitely make sure you are NOT using any specialty "non-staining" paint.

Suggestion: FOR HARD TO STICK SURFACES

- We recommend using the *3M CLEAR TAPE PRIMER along the top portion (4"-6" boarder) when applying to textured walls. If you want added security based on the NO VOC paints that have other added chemicals (antimicrobial, stain or mold resistant). You can apply and install in 15 min for aggressive tack (can remove paint) or wait 24 hours for less aggressive tack (small chance to remove paint)
- Another method is to use the ROMAN EZ-HANG apply when dry for easier removal.

