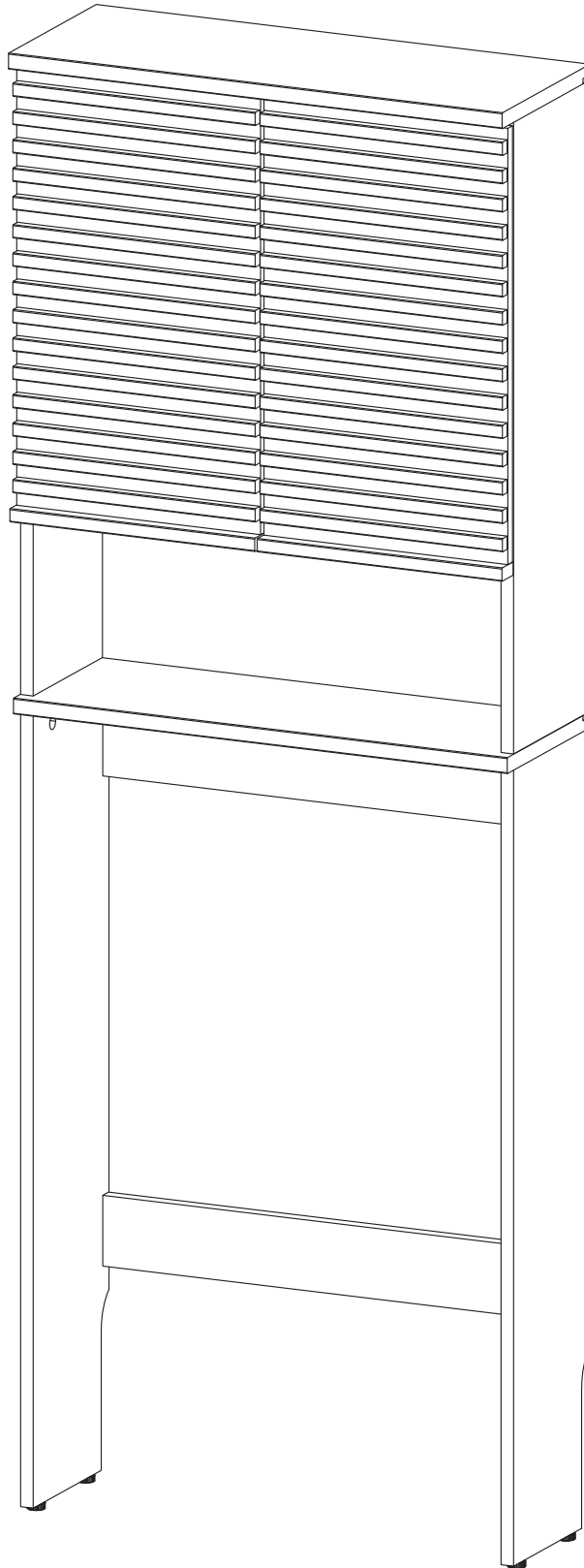


ASSEMBLY INSTRUCTIONS

EEI-6853

VO.11.22.23



Questions? Contact us!

609.256.9000 • cs@modway.com
www.modway.com

***modway**



Read through all of the instructions before starting



Approx. 60 minutes assembly time



2 people recommended for assembly



Care instructions are listed in the last step of this manual



Make sure you have all parts and components before discarding any packing materials

Only use hand tools to assemble this item. Do not use power tools. Do not tighten bolts or screws completely until all hardware is lined up and inserted into the holes.

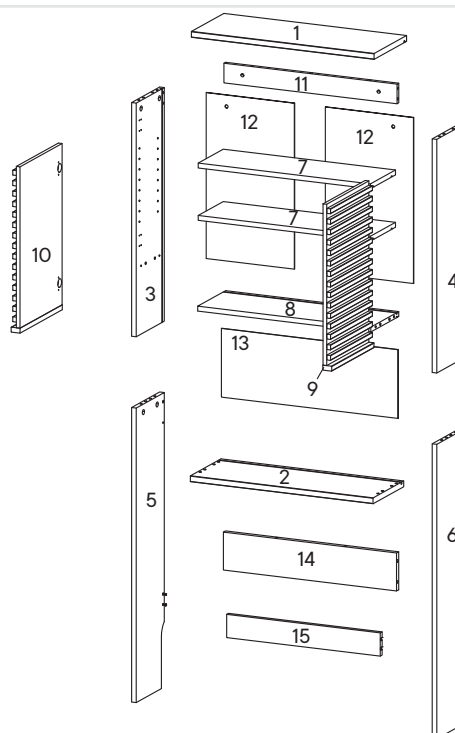
Do not over-tighten screws and bolts to avoid stripping the hardware or cracking the item.

Assemble your item on a flat, carpeted area, with plenty of space to work. This will prevent damage and scratches to your floors or the item while you're assembling the product.

Keep all components and packaging out of reach of children or animals to avoid risk of choking or suffocation.

Furniture components:

1	Top Board	x1	11	Support Board 1	x1
2	Bottom Board	x1	12	Back Board 1	x2
3	Side Board Left 1	x1	13	Back Board 2	x1
4	Side Board Right 1	x1	14	Support Board 2	x1
5	Side Board Left 2	x1	15	Support Board 3	x1
6	Side Board Right 2	x1			
7	Adjustable Shelf	x2			
8	Fixed Shelf	x1			
9	Door 1	x1			
10	Door 2	x1			



Provided hardware:

A		Cam Bolt Ø6 x 35 mm	x17	J		Ring	x2
B		Cam Lock Ø15 mm	x14	K		Wall Plug	x2
C		Wood Dowel Ø8 x 30 mm	x20	L		Screw Cap Ø15 mm	x8
D		Screw M 7 x 50 mm	x4	M		Wedge	x12
E		Screw M 4.5 x 12.5 mm	x24	N		Screw 3.5 x 15.5 mm	x12
F		Shelf Pin	x8	O		Wood Dowel Ø6 x 30 mm	x4
G		Screw 5.5 x 45 mm	x2	P		Cam Lock Ø12 mm	x3
H		Allen Key	x2	Q		Cam Bolt Ø6 x 19.5 mm	x4
I		Joining Strip	x1	R		Adjuster	x4

HS26A		Hinge	x4
-------	--	-------	----

What you need:

	Phillips Head Screwdriver
--	---------------------------

Wait!

Missing parts or hardware? Need assistance?
Contact us before returning your item. We're here to help!
609.256.9000 • cs@modway.com

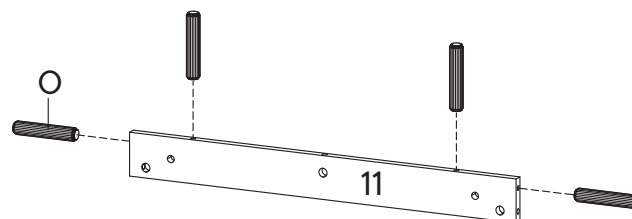
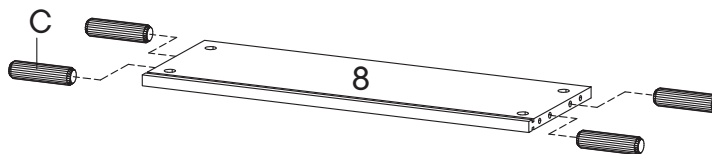
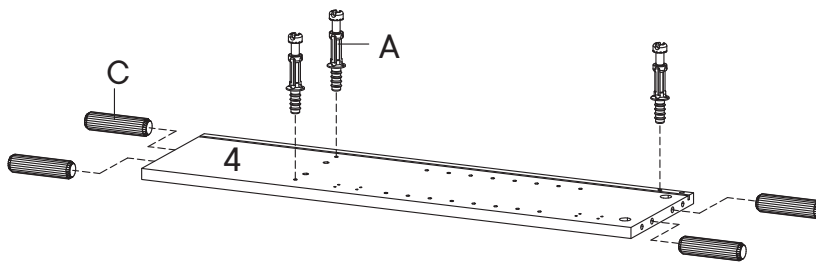
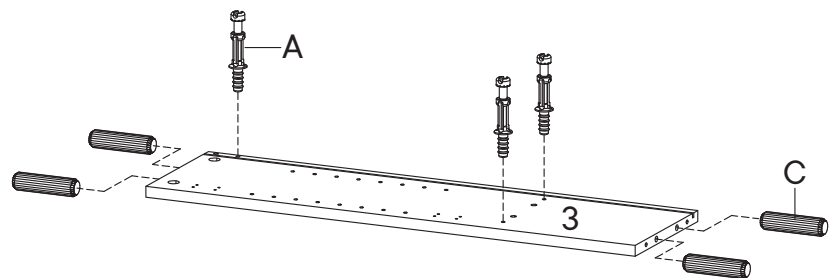
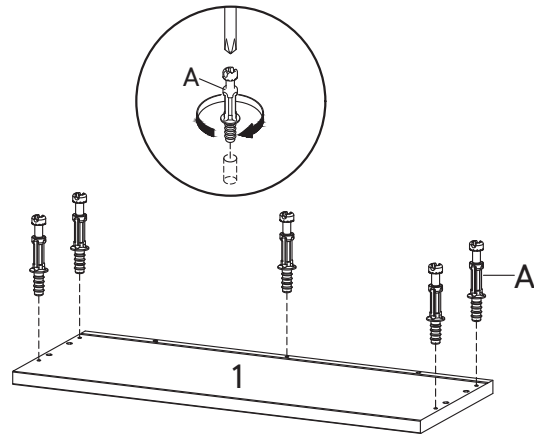
Step 1

HARDWARE

A	Cam Bolt Ø6 x 35 mm	x11
C	Wood Dowel Ø8 x 30 mm	x12
O	Wood Dowel Ø6 x 30 mm	x4

COMPONENTS

1	Top Board	x1
3	Side Board Left 1	x1
4	Side Board Right 1	x1
8	Fixed Shelf	x1
11	Support Board 1	x1



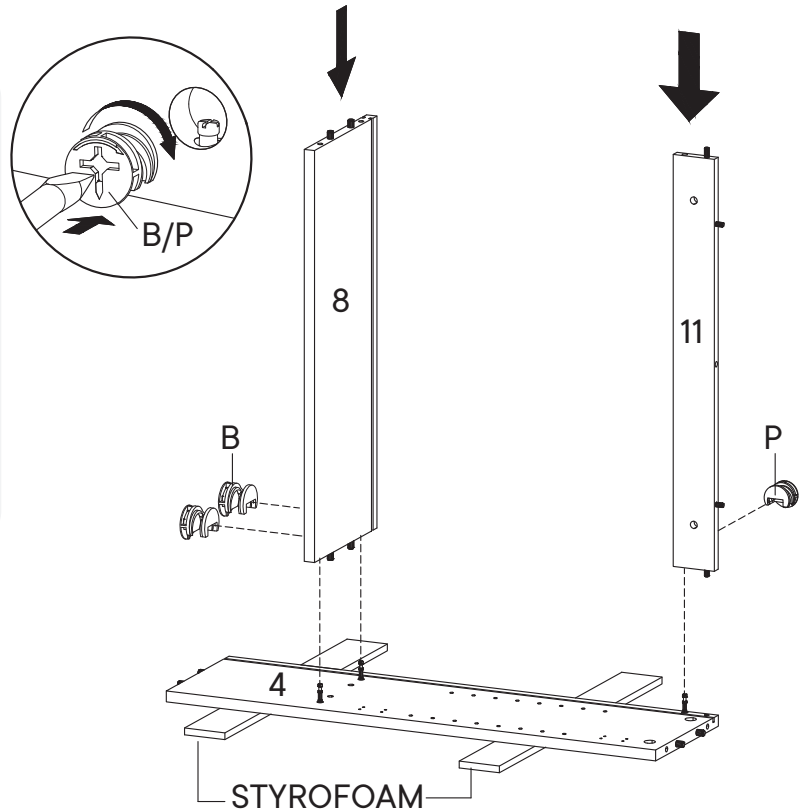
Step 2

HARDWARE

- | | | |
|----------|-----------------|----|
| B | Cam Lock Ø15 mm | x2 |
| P | Cam Lock Ø12 mm | x1 |

COMPONENTS

- | | | |
|-----------|--------------------|----|
| 4 | Side Board Right 1 | x1 |
| 8 | Fixed Shelf | x1 |
| 11 | Support Board 1 | x1 |



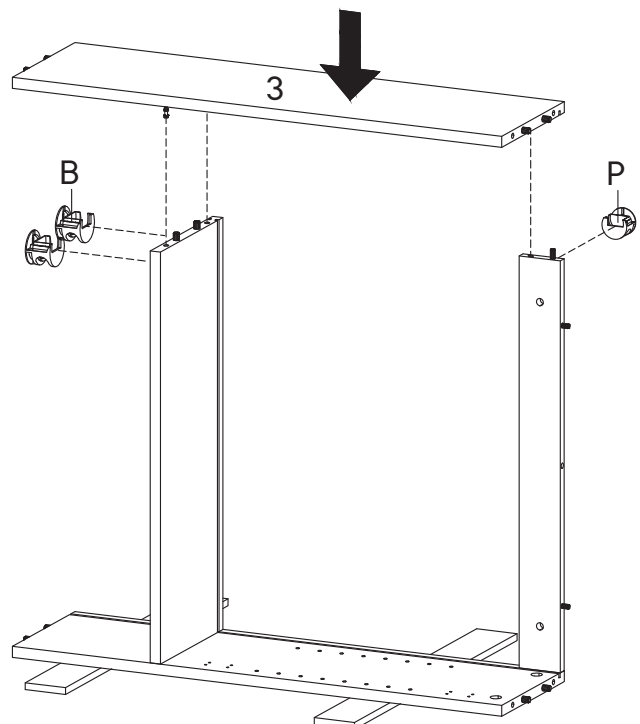
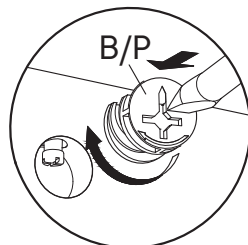
Step 3

HARDWARE

- | | | |
|----------|-----------------|----|
| B | Cam Lock Ø15 mm | x2 |
| P | Cam Lock Ø12 mm | x1 |

COMPONENTS

- | | | |
|----------|-------------------|----|
| 3 | Side Board Left 1 | x1 |
|----------|-------------------|----|



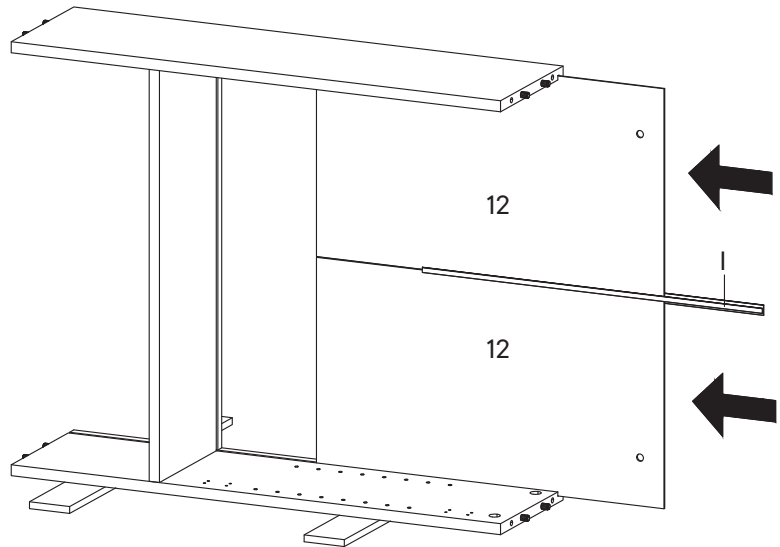
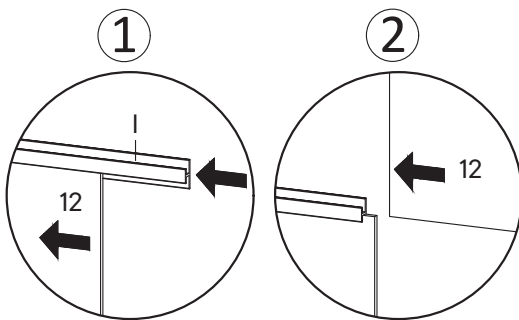
Step 4

HARDWARE

- ① Joining Strip x1

COMPONENTS

- ⑫ Back Board 1 x2



Step 5

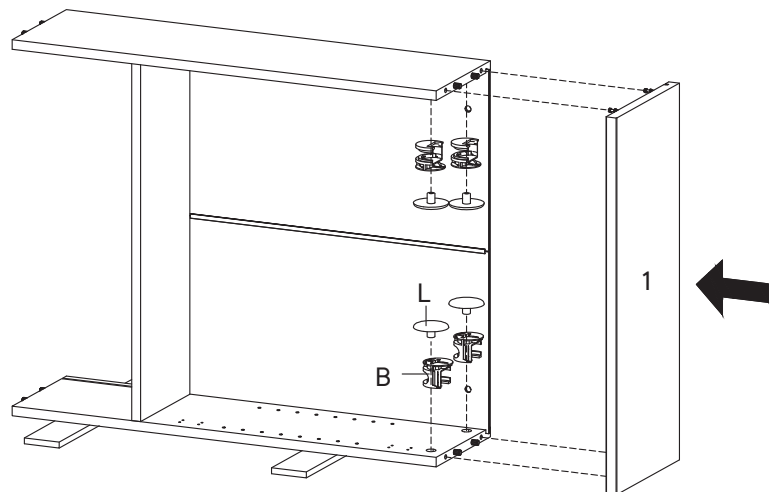
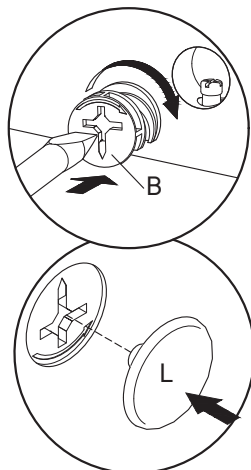
HARDWARE

- Ⓑ Cam Lock Ø15 mm x4

- Ⓛ Screw Cap Ø15 mm x4

COMPONENTS

- ① Top Board x1



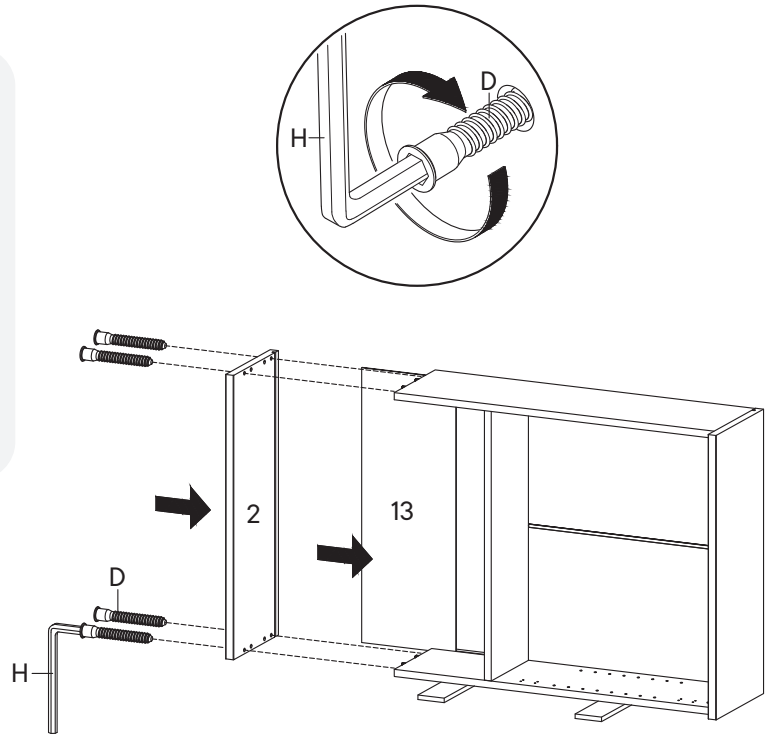
Step 6

HARDWARE

- | | | |
|----------|-------------------|----|
| D | Screw M 7 x 50 mm | x4 |
| H | Allen Key | x1 |

COMPONENTS

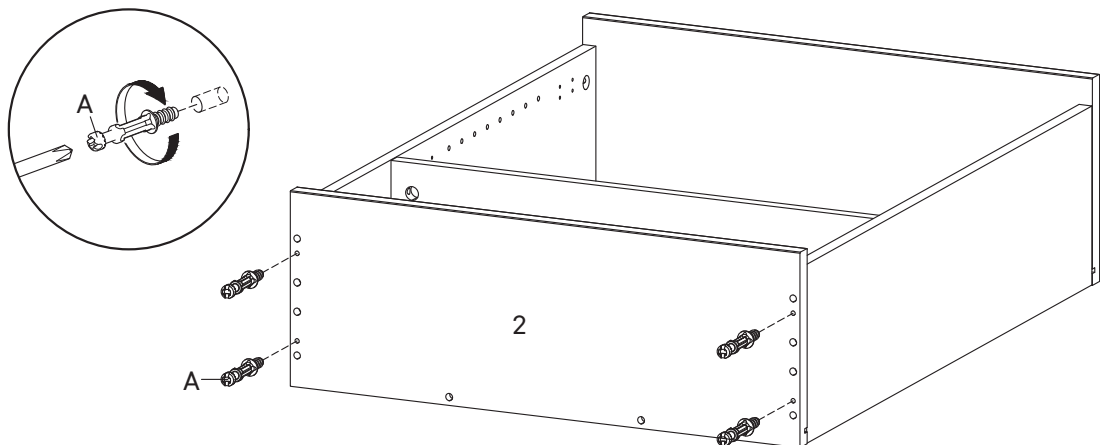
- | | | |
|-----------|--------------|----|
| 2 | Bottom Board | x1 |
| 13 | Back Board 2 | x1 |



Step 7

HARDWARE

- | | | |
|----------|---------------------|----|
| A | Cam Bolt Ø6 x 35 mm | x4 |
|----------|---------------------|----|



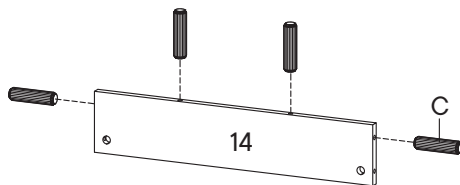
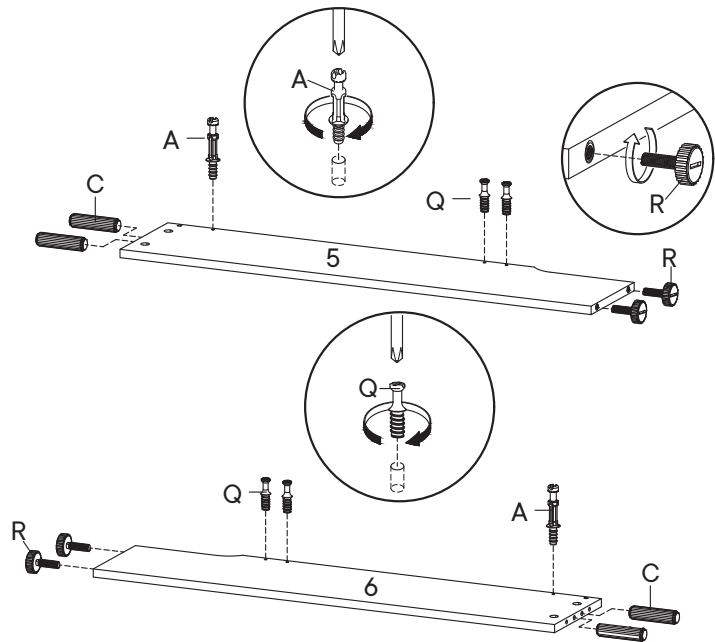
Step 8

HARDWARE

A	Cam Bolt Ø6 x 35 mm	x2
C	Wood Dowel Ø8 x 30 mm	x8
Q	Cam Bolt Ø6 x 19.5 mm	x4
R	Adjuster	x4

COMPONENTS

5	Side Board Left 2	x1
6	Side Board Right 2	x1
14	Support Board 2	x1



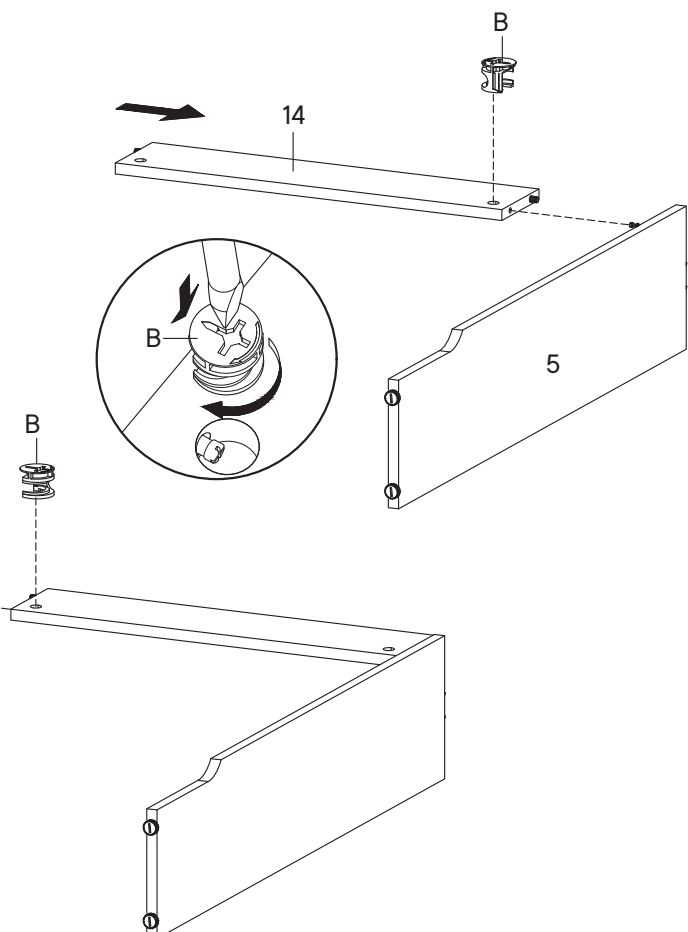
Step 9

HARDWARE

B	Cam Lock Ø15 mm	x2
----------	-----------------	----

COMPONENTS

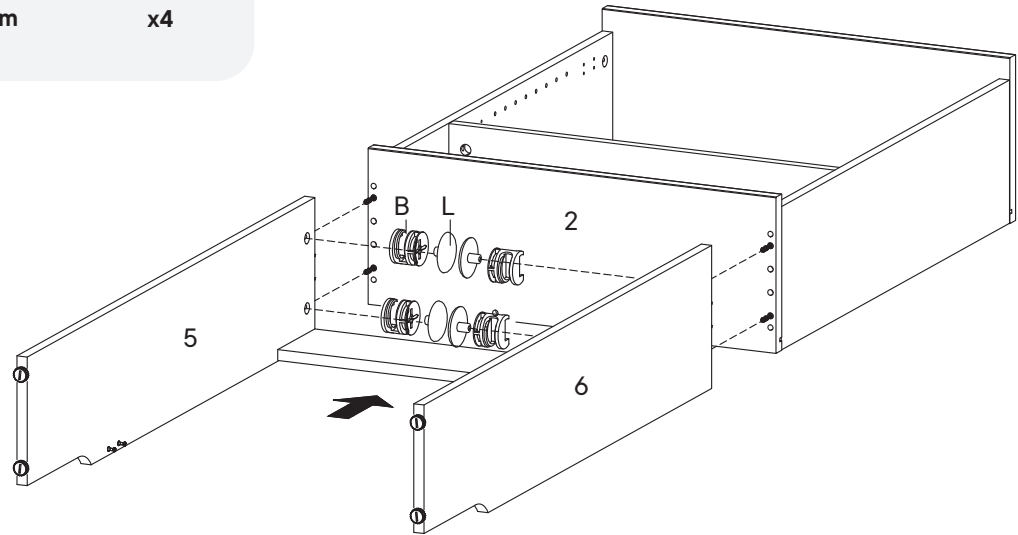
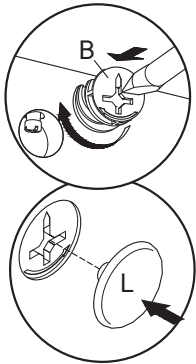
5	Side Board Left 2	x1
6	Side Board Right 2	x1
14	Support Board 2	x1



Step 10

HARDWARE

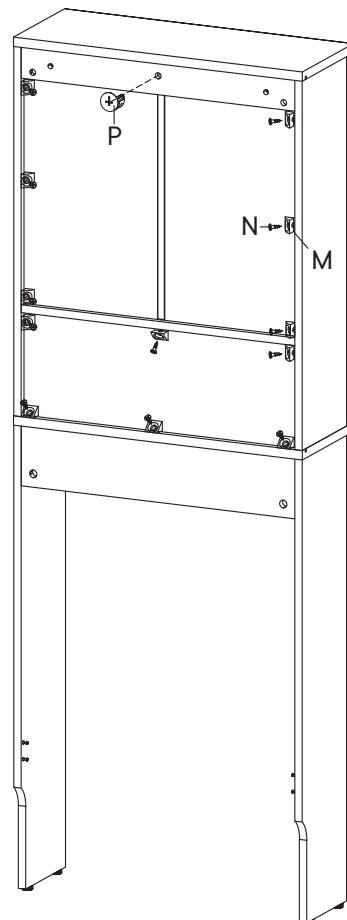
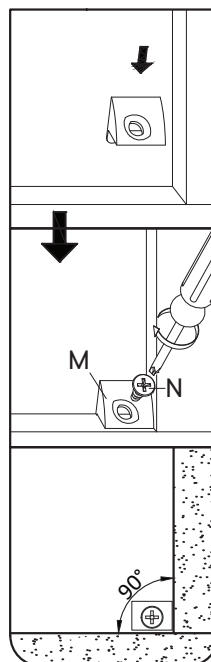
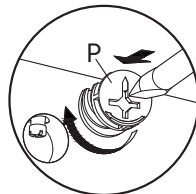
- B** Cam Lock Ø15 mm x4
- L** Screw Cap Ø15 mm x4



Step 11

HARDWARE

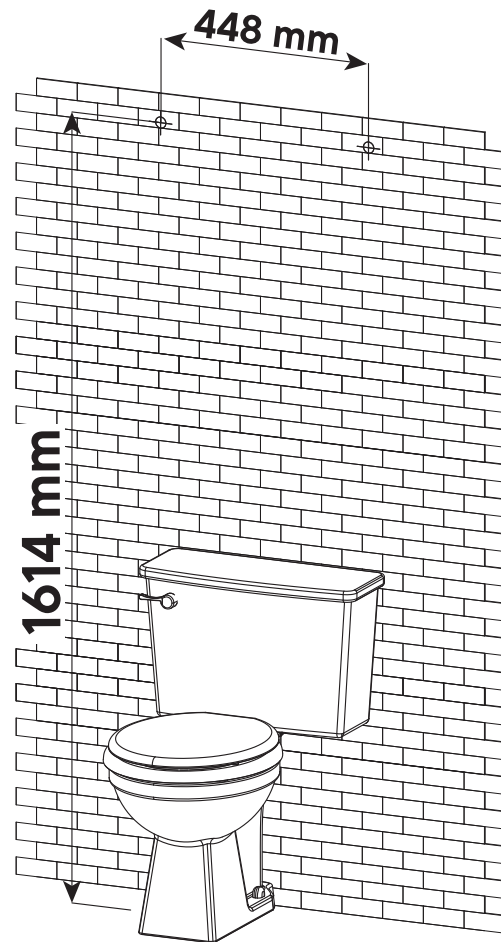
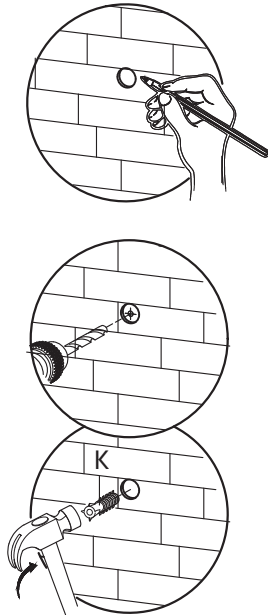
- M** Wedge x12
- N** Screw M 3.5 x 15.5 mm x12
- P** Cam Lock Ø12 mm x1



Step 12

HARDWARE

K Wall Plug x2

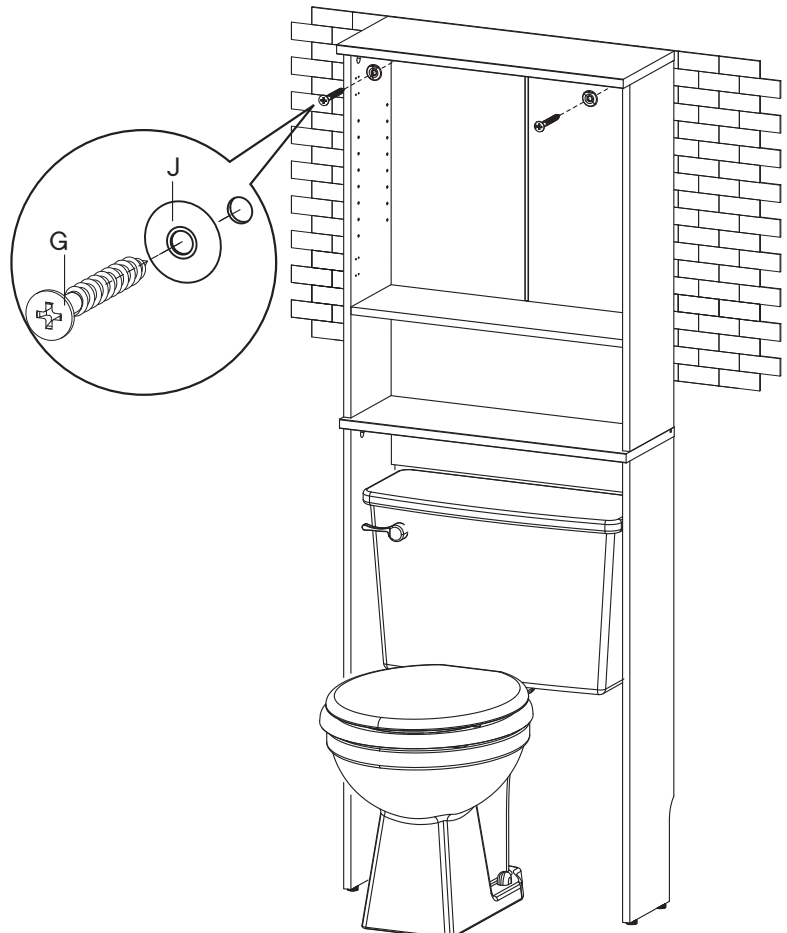


Step 13

HARDWARE

G Screw 5.5 x 45 mm x2

J Ring x2



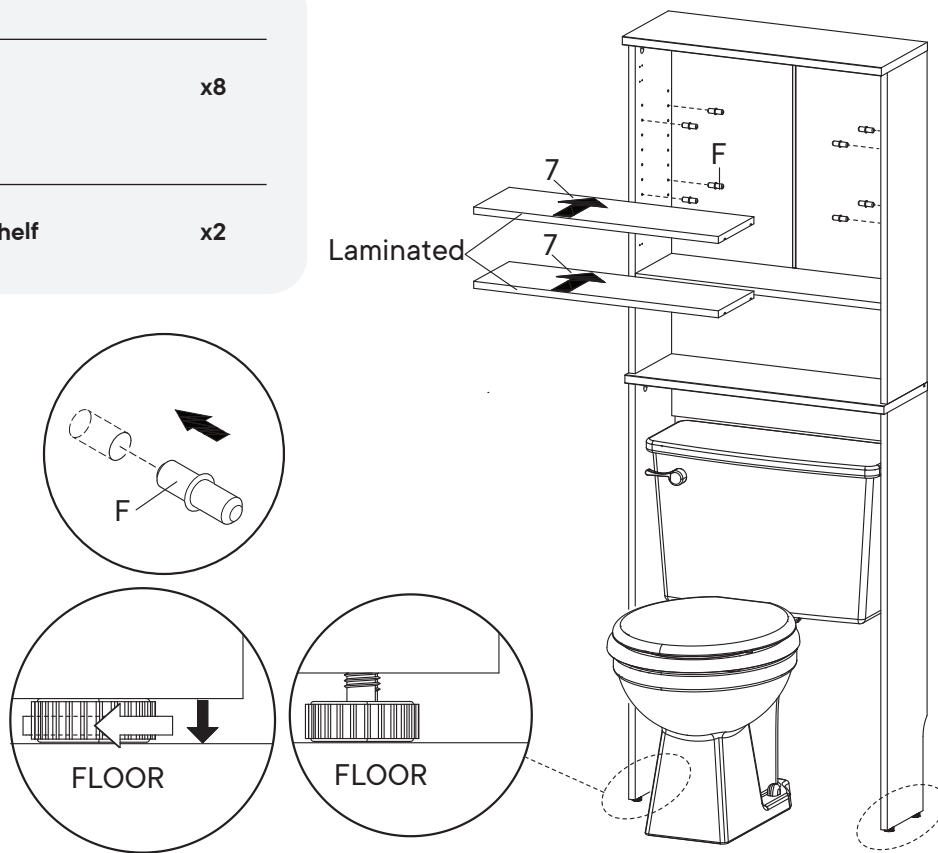
Step 14

HARDWARE

F Shelf Pin x8

COMPONENTS

7 Adjustable Shelf x2



Step 15

HARDWARE

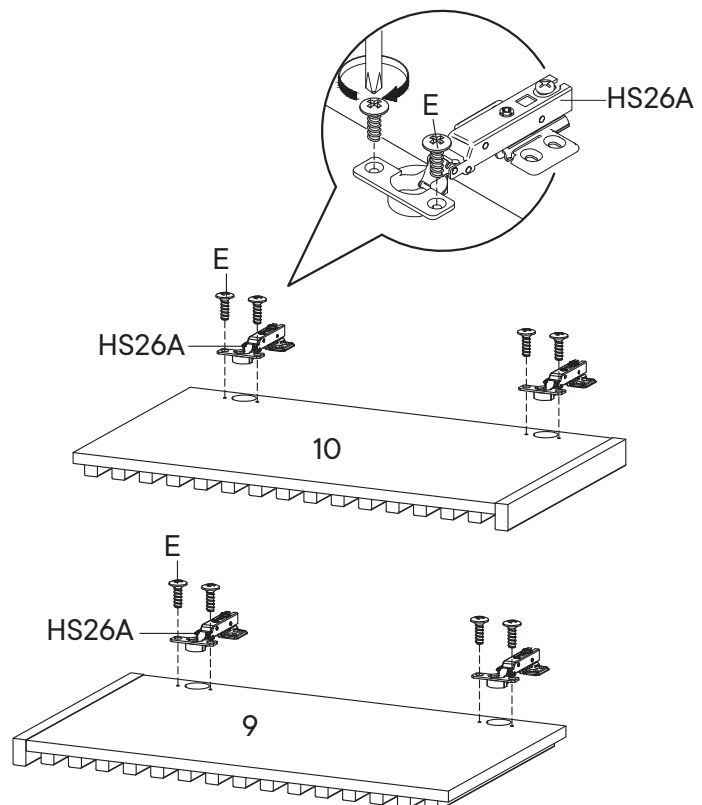
E Screw M 4.5 x 12.5 mm x8

HS26A Hinge x4

COMPONENTS

9 Door 1 x1

10 Door 2 x1



Step 16

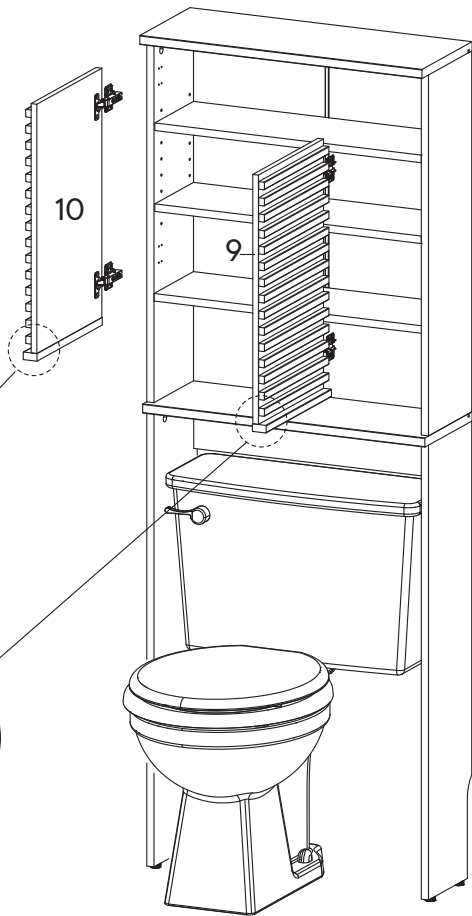
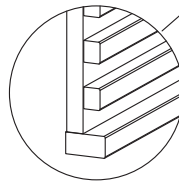
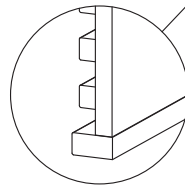
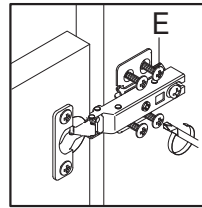
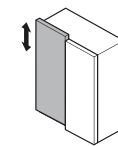
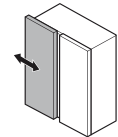
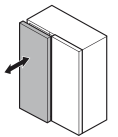
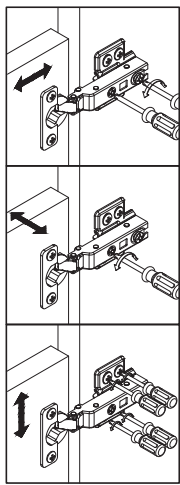
HARDWARE

E Screw M 4.5 x 12.5 mm x16

COMPONENTS

9 Door 1 x1

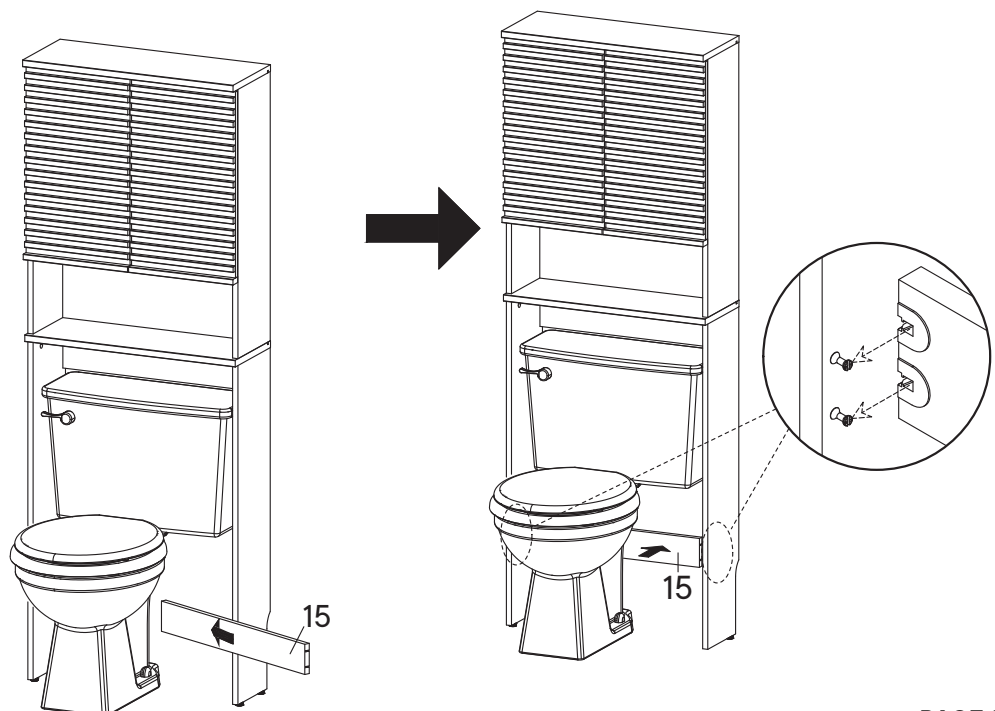
10 Door 2 x1



Step 17

COMPONENTS

15 Support Board 3 x1



Great job!

Cabinet assembly is complete.

♥ CARING FOR YOUR ITEM

Indoor use only.

Not contract grade.

Clean using a non-abrasive cloth
and a mild cleaner.

Never use harsh chemicals,
as they could damage the finish
or integrity of the item.

CONNECT WITH US!



Tag us **@modway_furniture** and **#modway**
for a chance to be featured.

