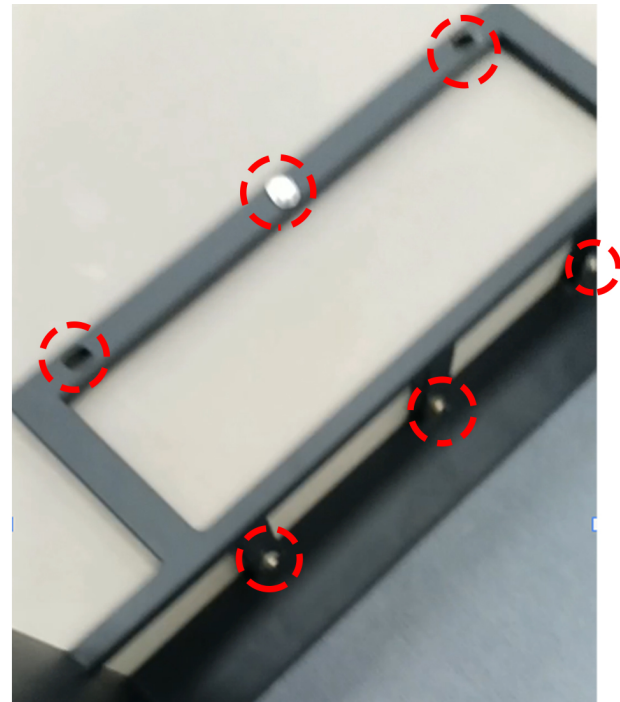
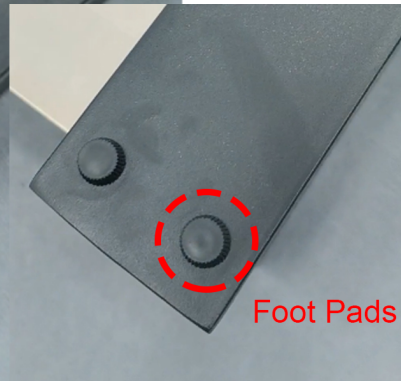
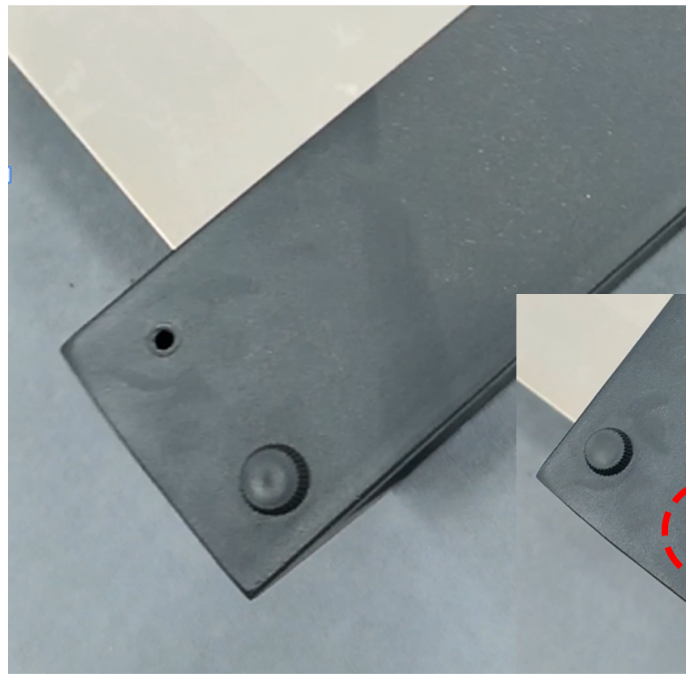
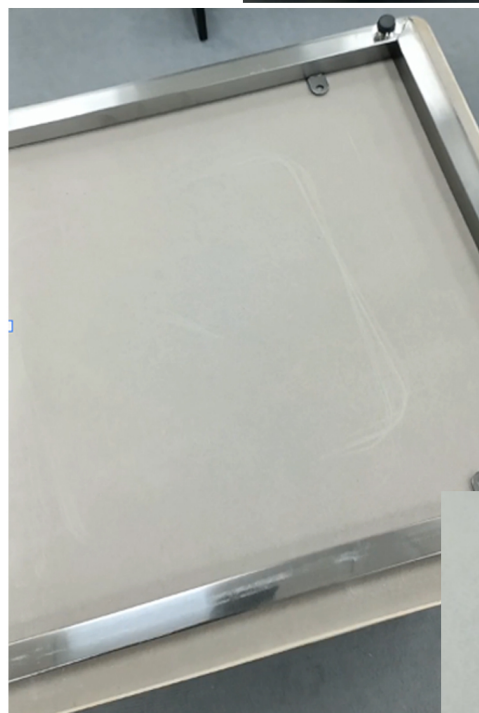


# INSTALLATION DOCUMENT



1. First, turn the tabletop upside down. Next, tighten the foot pads into the frame. Then, securely tighten the six screws on the upper section.



2. Place the frame on the bottom of the cabinet and secure it with self-tapping screws through the corresponding mounting holes. Then, attach these four feet to the frame.



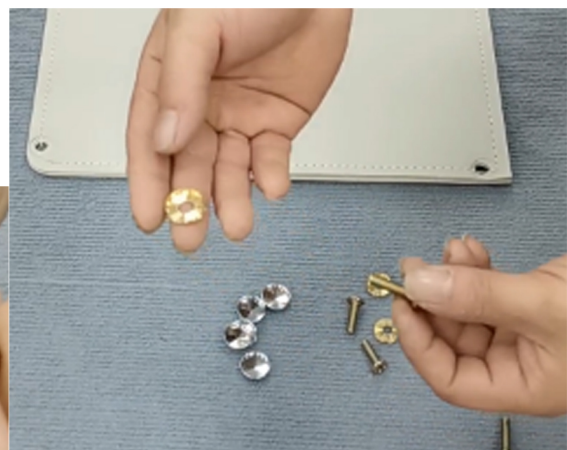
Place the frame on top of the cabinet and secure it with self-tapping screws through the corresponding mounting holes.



Once installed, simply place the tabletop on the cabinet.

3. The threaded side of the gasket faces inward through the screw

Install all five screws



Then, place the mat on top, align it, and tighten the screws

After tightening the screws, cover them with the cap nuts and fasten them securely

