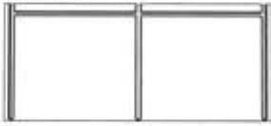


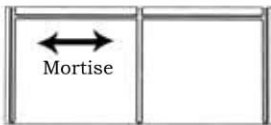
ASSEMBLY INSTRUCTIONS

PARTS:

Side A



Side B



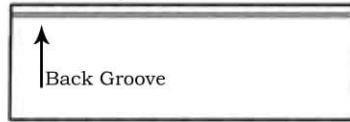
Shelf (has groove on both sides)



(2) Back Pieces



Bottom (groove on one side only)



Top (groove on one side only)



1 Allen Wrench

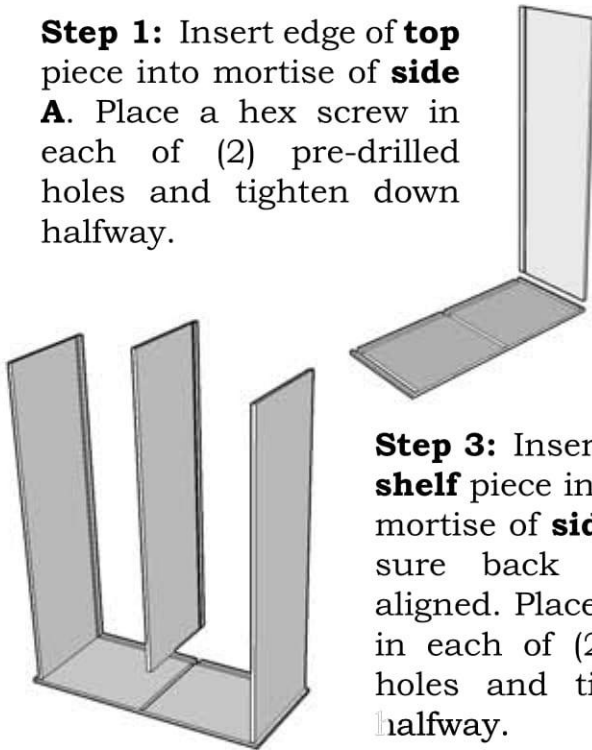


12 Hex Screws

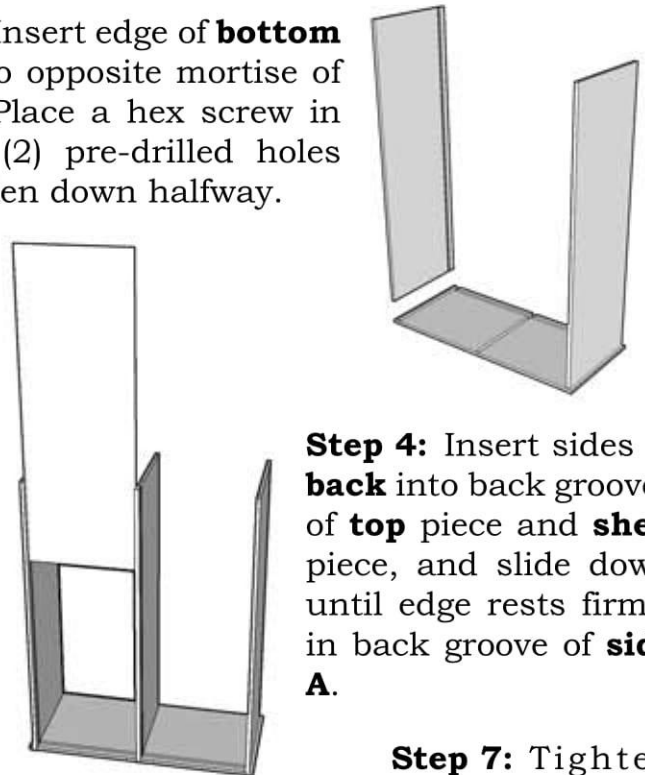


NOTICE - KEEP BACK GROOVES ALIGNED

Step 1: Insert edge of **top** piece into mortise of **side A**. Place a hex screw in each of (2) pre-drilled holes and tighten down halfway.



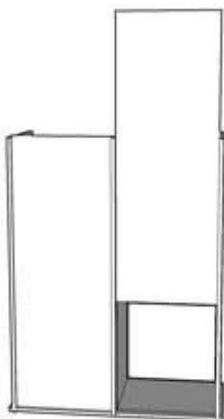
Step 2: Insert edge of **bottom** piece into opposite mortise of **side A**. Place a hex screw in each of (2) pre-drilled holes and tighten down halfway.



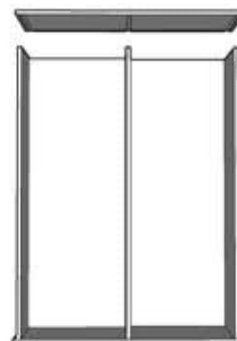
Step 3: Insert edge of **shelf** piece into remaining mortise of **side A**, making sure back grooves are aligned. Place a hex screw in each of (2) pre-drilled holes and tighten down halfway.

Step 4: Insert sides of **back** into back grooves of **top** piece and **shelf** piece, and slide down until edge rests firmly in back groove of **side A**.

Step 5: Insert sides of remaining **back** into back grooves of **shelf** piece and **bottom** piece, and slide down until edge rests firmly in back groove of **side A**.



Step 6: Place **side B** over the edges of the assembled pieces, making sure the edges rest firmly in the mortises and back grooves of **side B**. Place a hex screw in each of (6) pre-drilled holes and tighten down halfway.



Step 7: Tighten down all screws until they are snug. **DO NOT OVER TIGHTEN. DO NOT DRILL.** Assembly is now complete.

