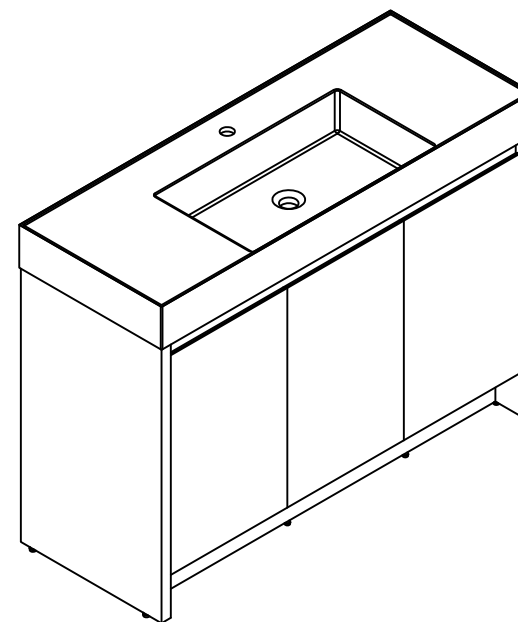


THANKS FOR WATCHING

Your feedback is invaluable to us and we would love to hear about your experience. Please take the time to leave us a review.


















Thank you for shopping with us!

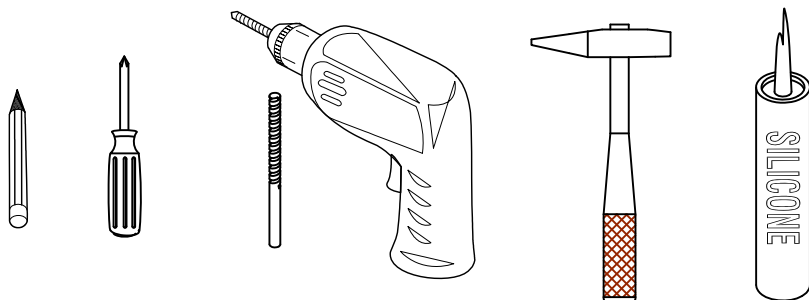
We encourage you to take a few minutes to go through this booklet. It contains important information on installation and care tips to keep your furniture looking as good as new.

Item NO.:BV B03648

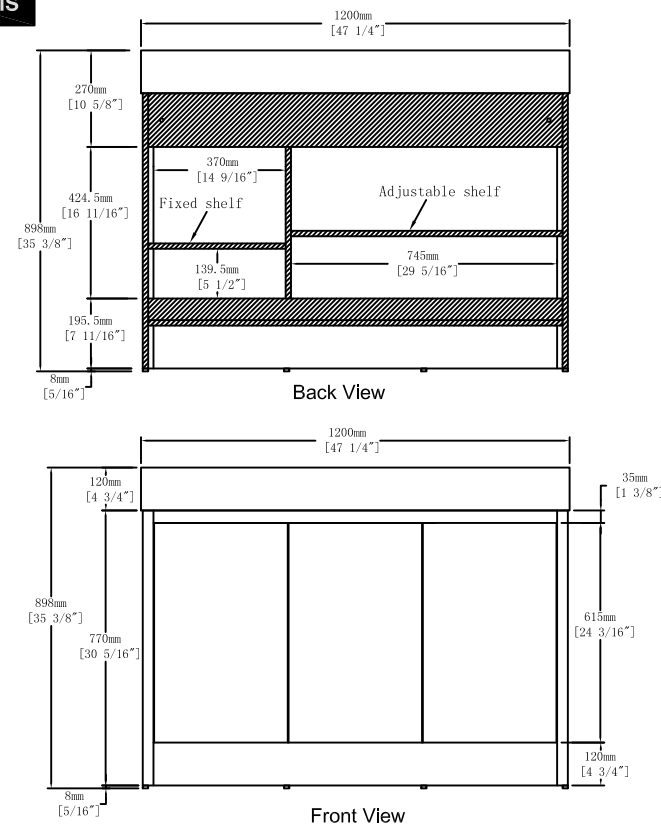
Hardware

NO.	Draw	QTY	NO.	Draw	QTY
A	 Screws Ø4x14mm	56	I	 Hinges (Internal hiding)	4
B	 Two-in-one connector	37	J	 Hinges (Half cover)	2
C	 Two-in-one connector	37	K	 Screws Ø4x25mm	1
D	 Wood plug	7	L	 Anti-collision gasket	6
E	 Plastic anchor(Ø10mm)	2	M	 Movable laminate support	4
F	 Screws for fix on the wall	2	N	 Adjustable feet	6
G	 Bracket (53x70x44mm)	2	O	 Screwdriver	1
H	 Bracket (19x19x35mm)	2			

Recommended tools



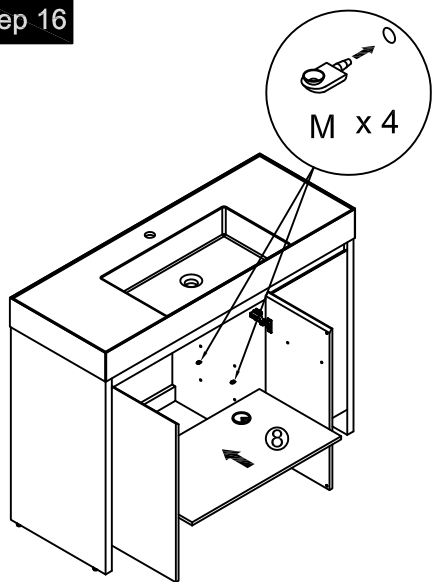
Dimensions



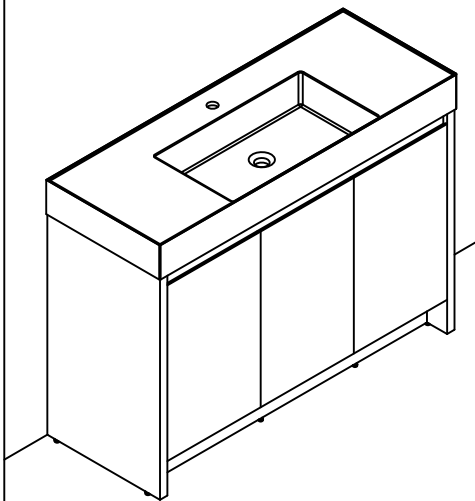
CARE CLEANING AND MAINTENANCE

- 1.Dust regularly with a soft , dry cloth.
- 2.Avoid the use of all chemicals household cleaners, abrasives, or cleaners that contain lemon, vinegar, or other acids that may damage the finish.
- 3.Excessive exposure to sunlight and extreme changes in temperature and moisture can damage wood furniture.
- 4.The sink top is resilient, but care needs to be taken to preserve its appearance.
- 5.Do not place hot appliances, such as curling irons and hot hair dryers directly on the countertop. Wipe spills immediately.

Step 16

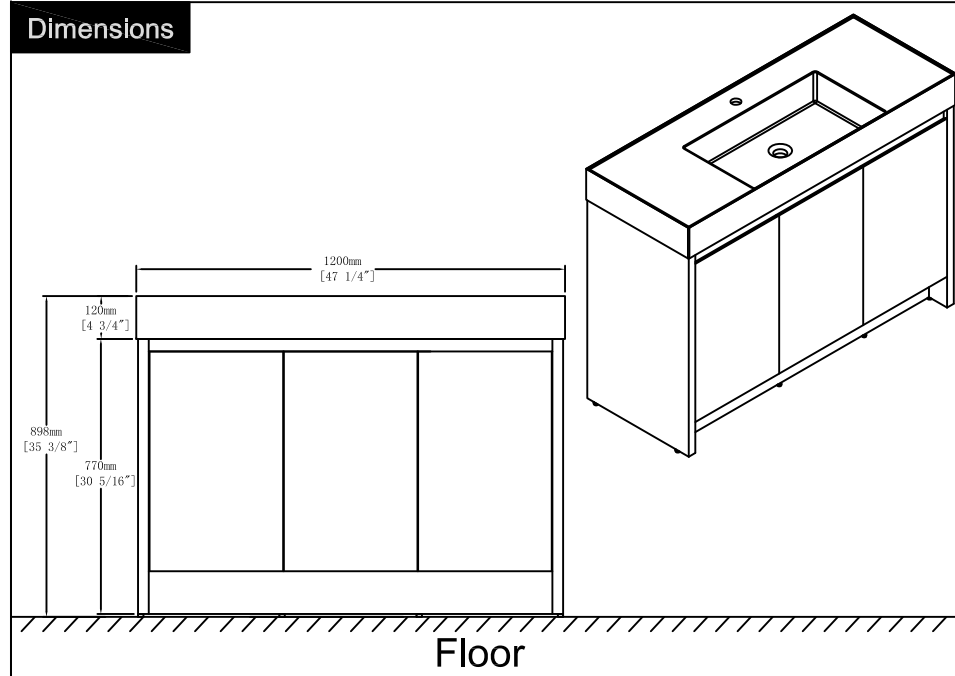


Finished

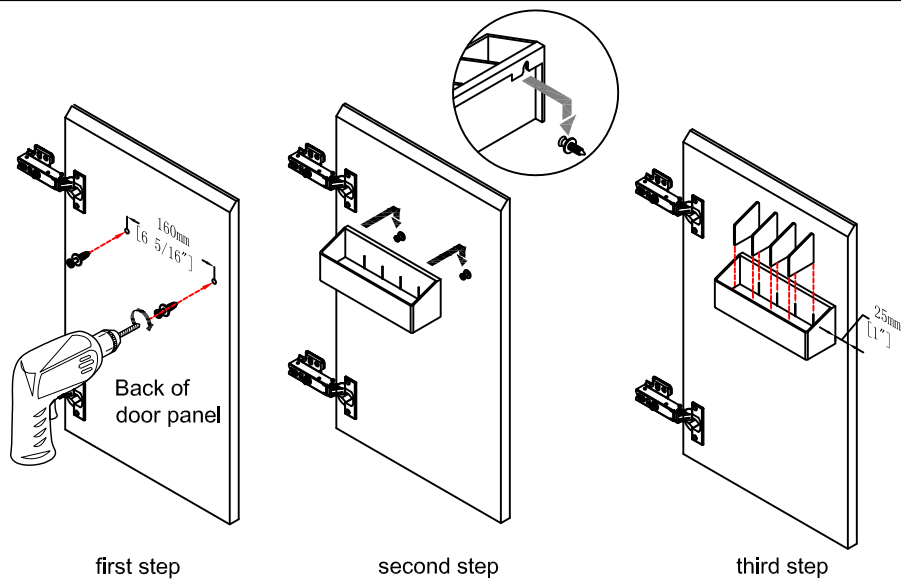


Notes:
The installation position can be selected according to the required height.

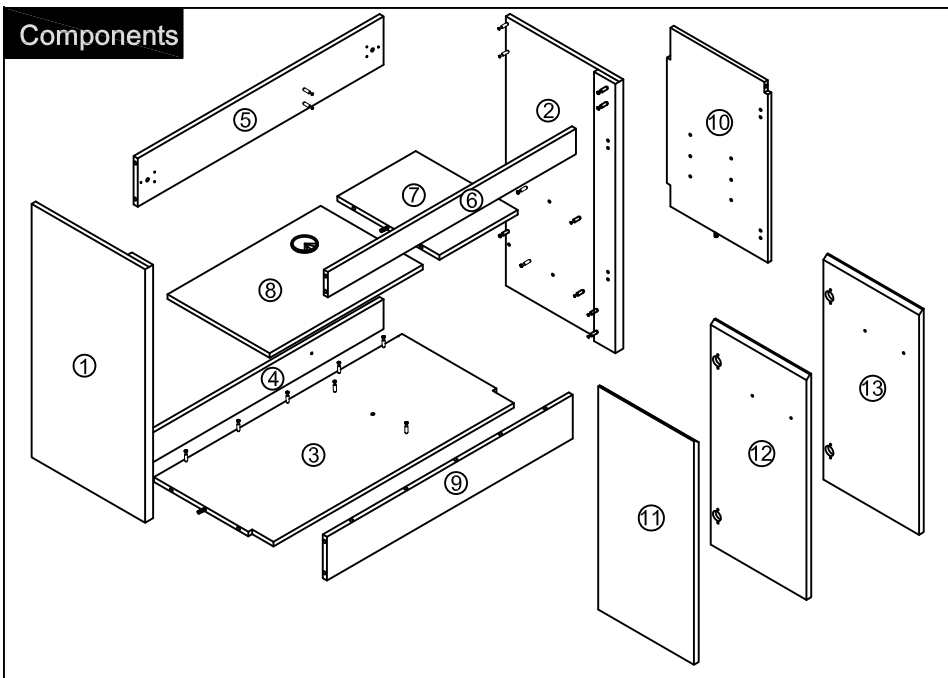
Dimensions

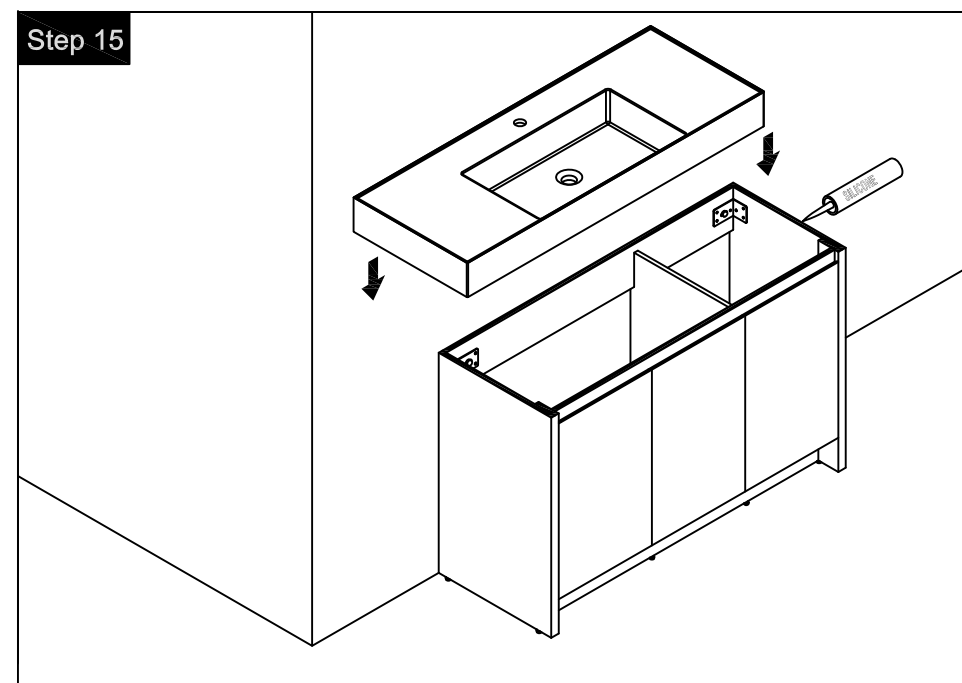
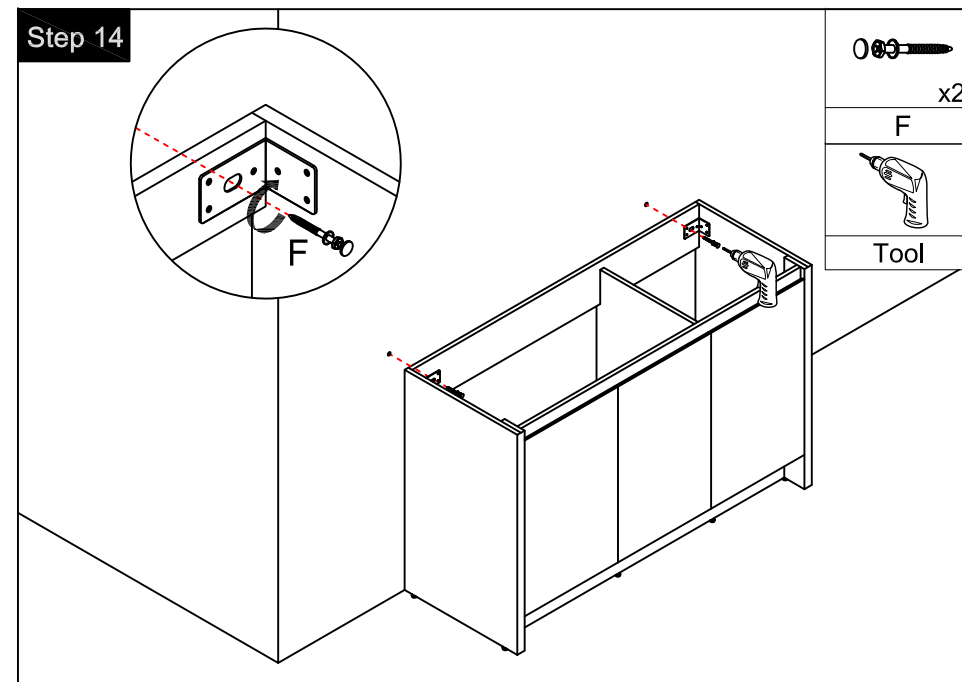
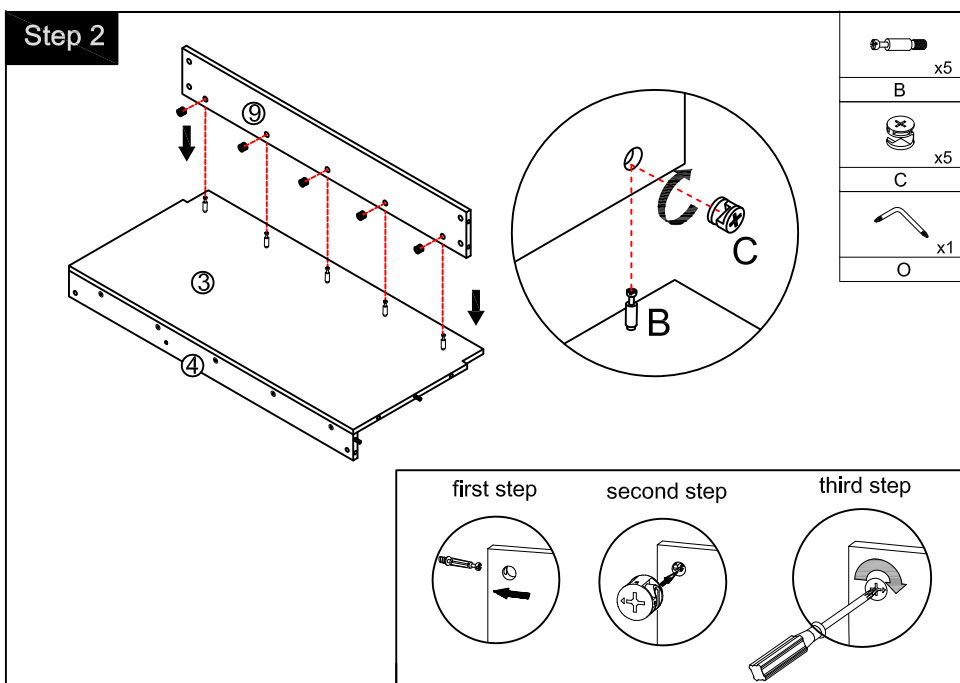
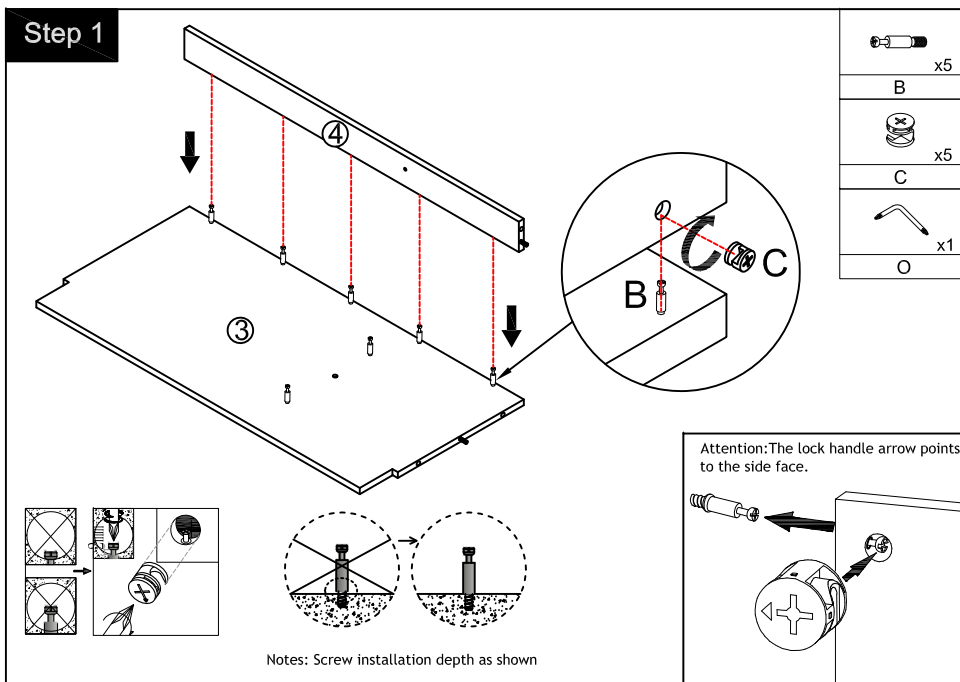


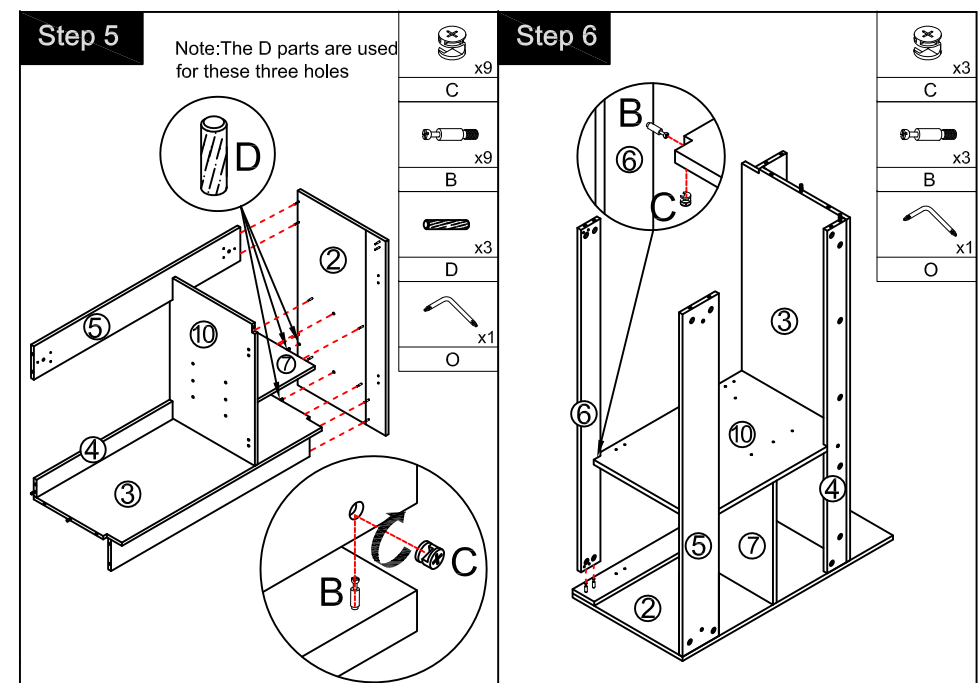
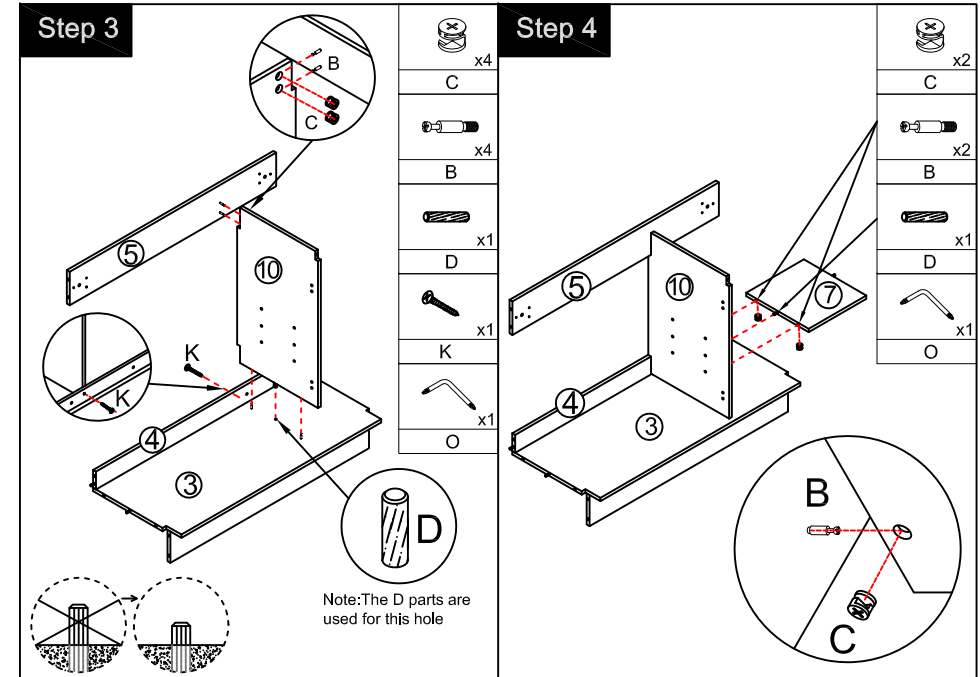
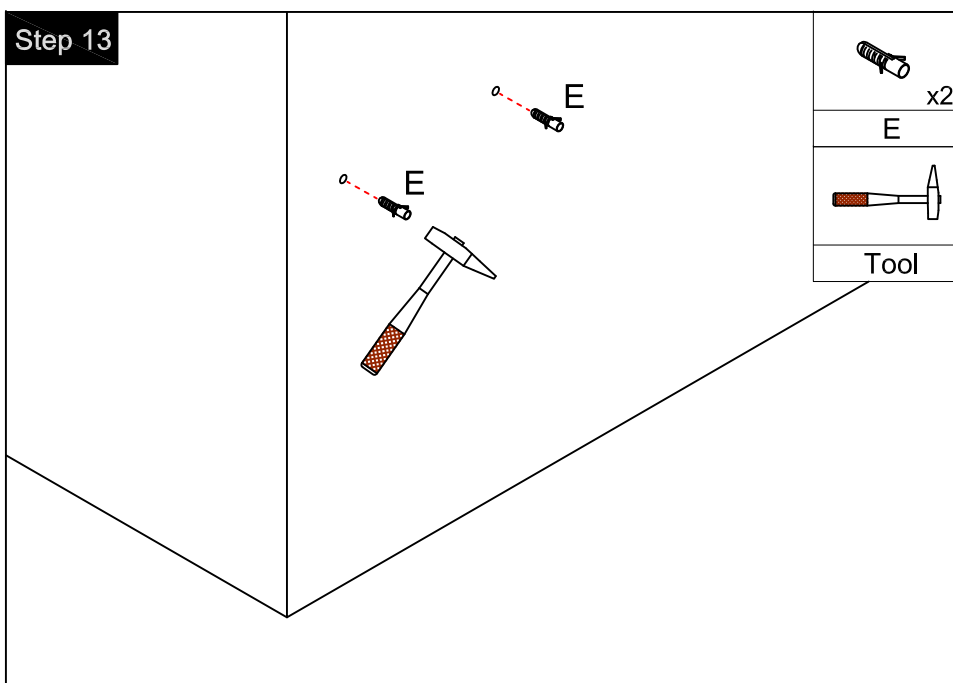
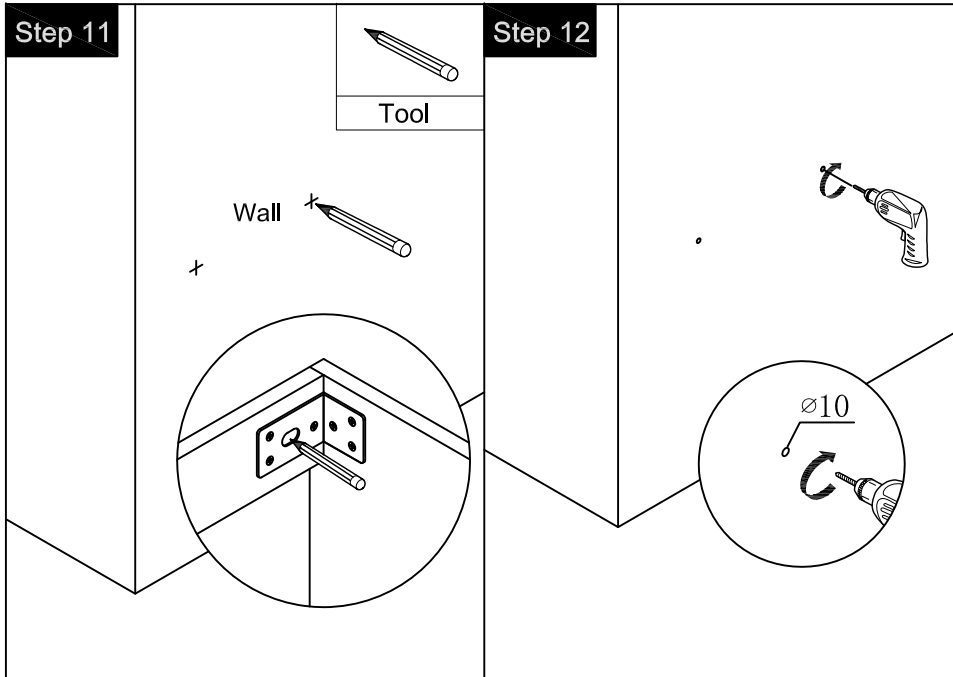
Procedure for installing the plastic box



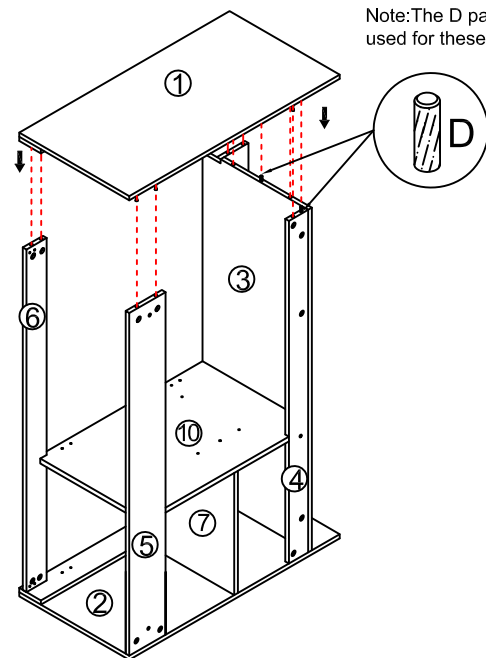
Components



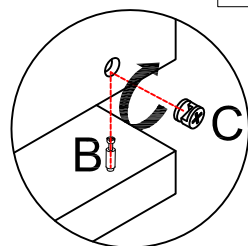




Step 7

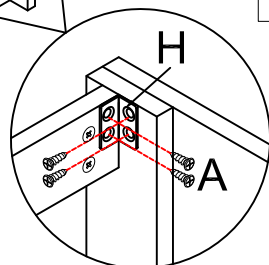
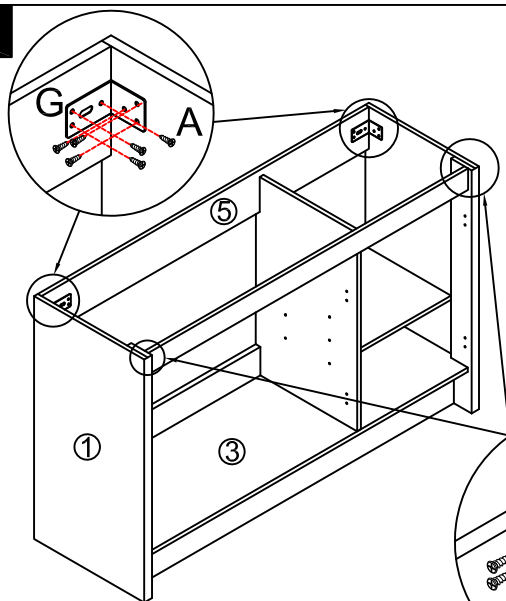


Note: The D parts are used for these two holes



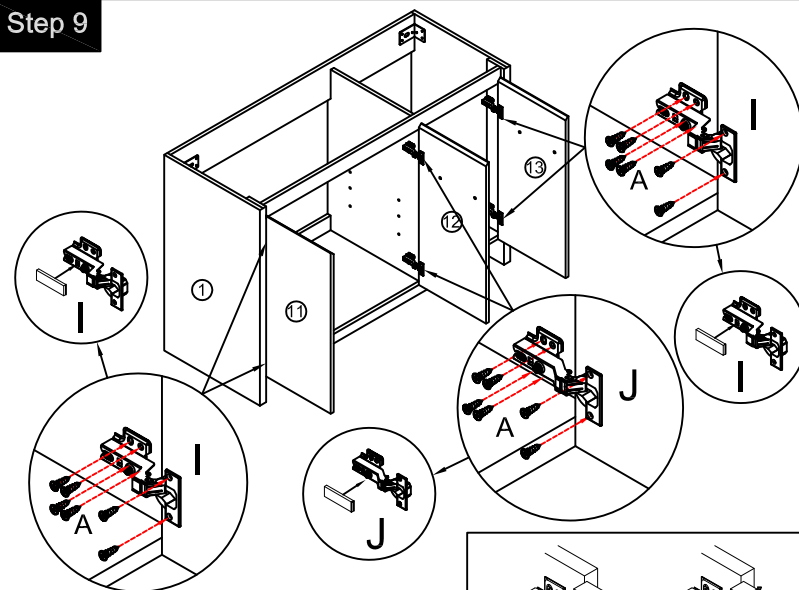
	x9
B	
	x9
C	
	x2
D	
	x1
O	

Step 8

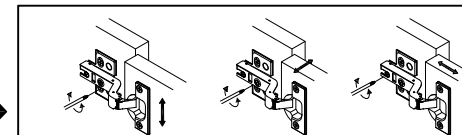


	x2
G	
	x2
H	
($\varnothing 4 \times 14\text{mm}$)	
	x20
A	
Tool	

Step 9

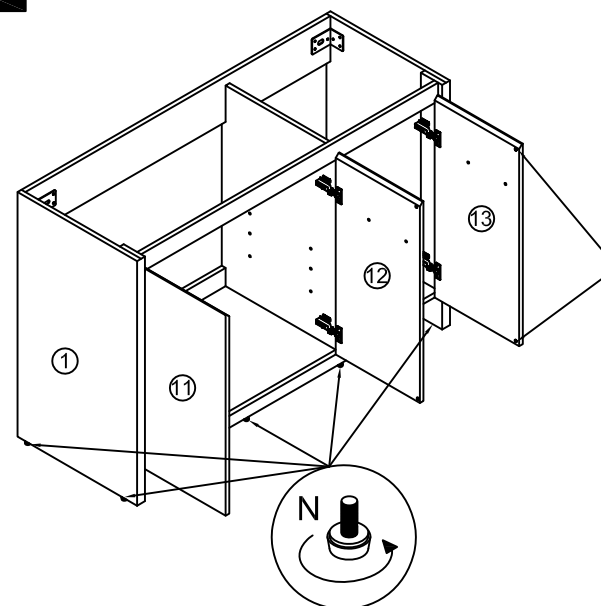


You can adjust the doors by tightening or loosening the screws on the hinge. →



	x4
I	
	x2
J	
($\varnothing 4 \times 14\text{mm}$)	
	x36
A	
Tool	

Step 10



Note: Install and adjust the level screws

	x6
L	
	x6
N	