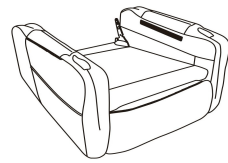
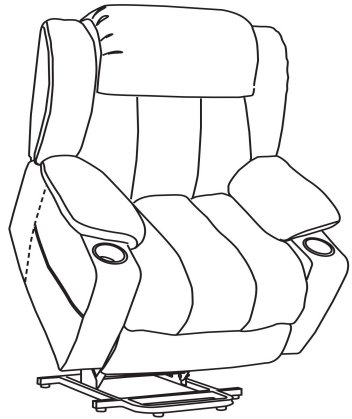


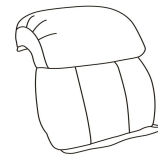
Please make sure you've got everything lists as following assembly parts



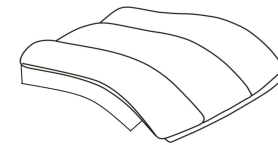
Seat base



Back support



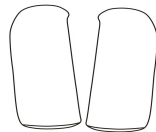
Back upholstery



Seat upholstery



Back wings supports



Back wings



Amrs upholstery



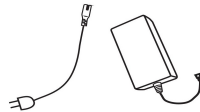
Cup holder



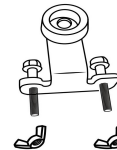
Remote control



lift control



upholserty Power



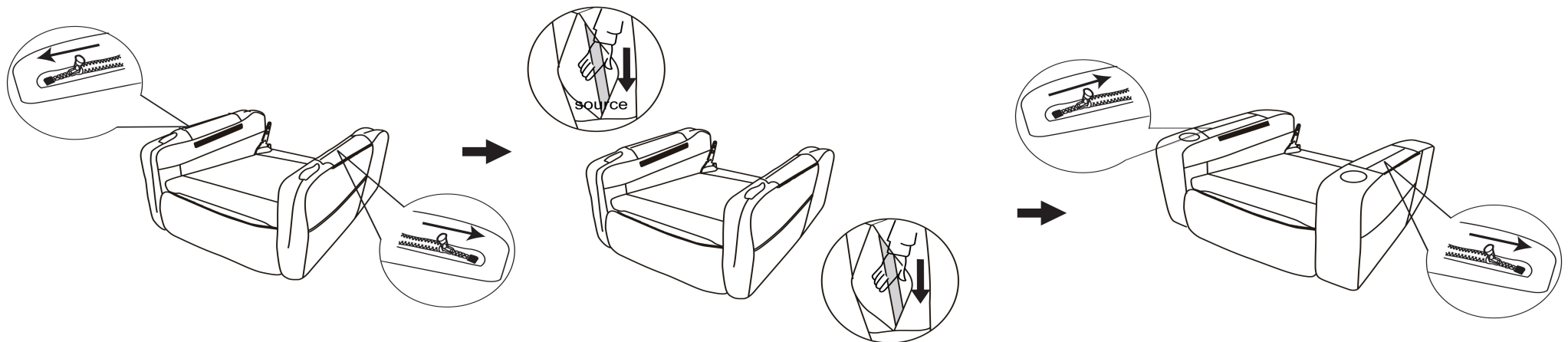
Anti-fall bracket x 2



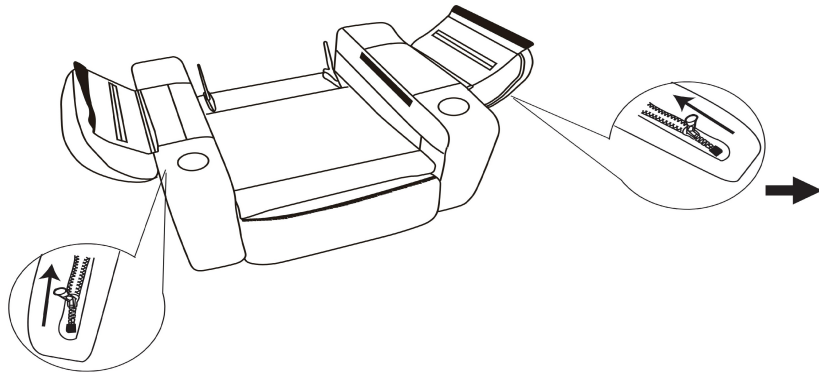
Power cord

STEP 1

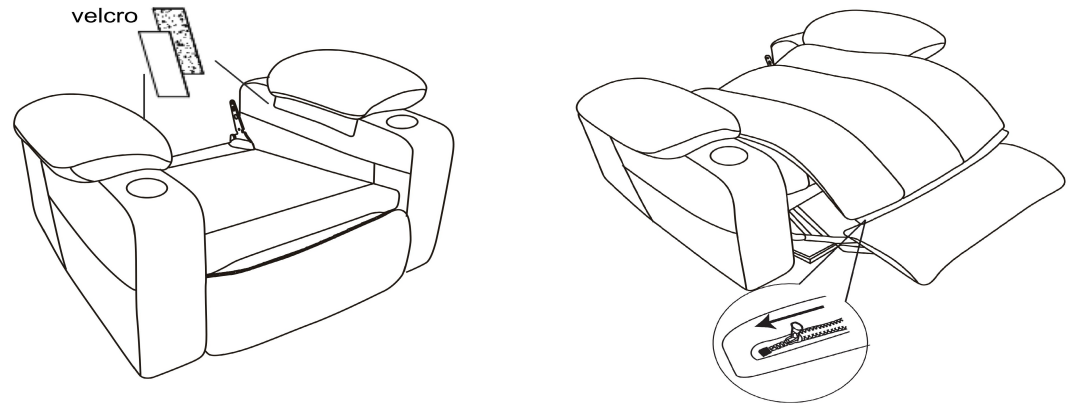
Unzipp the arms,hold the black pole in arms and push down to open the arms,after then close the zipper.



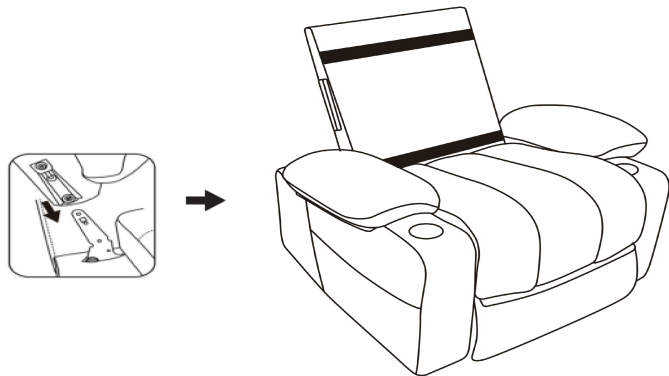
STEP 2 Match the arms upholstery in zipper



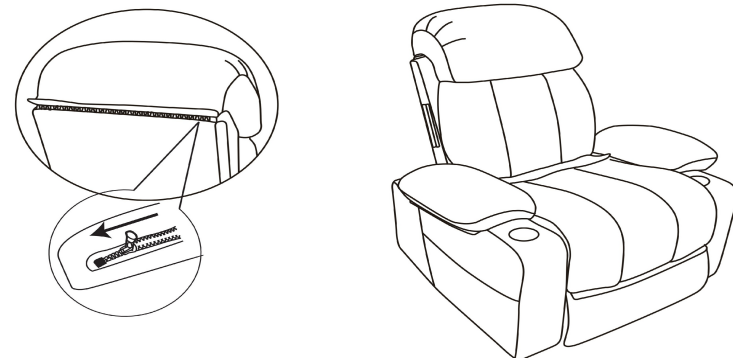
STEP 3 Assembling the seat and upholstery. open the footrest-- match the zipper --close the footrest, then put the upholstery on the certain position of seat.



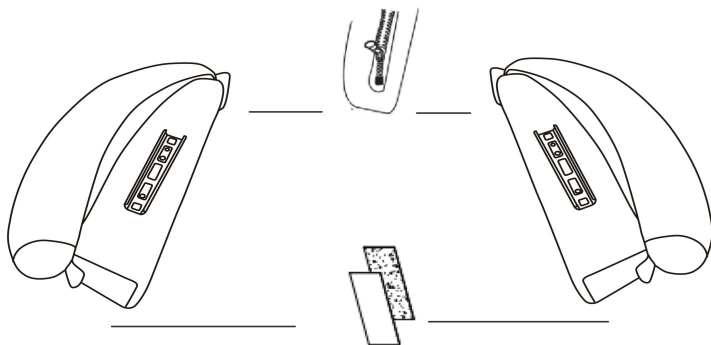
STEP 4 Assembling the backsupport on the seat.



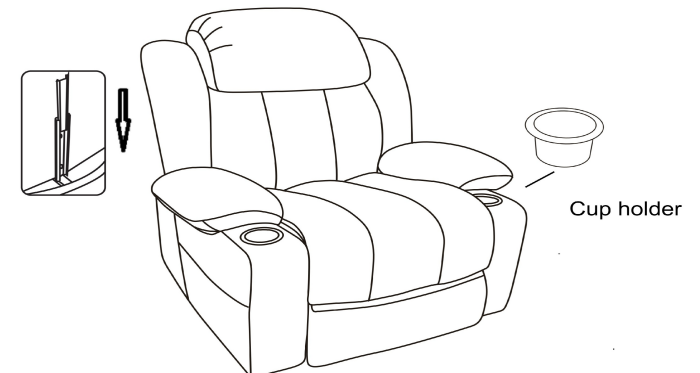
STEP 5 assembling the back upholstery on back support in zipper.



STEP 6 Assembling the back wings and upholstery in zipper and velcro



STEP 7 Assembling the back wings on each side back

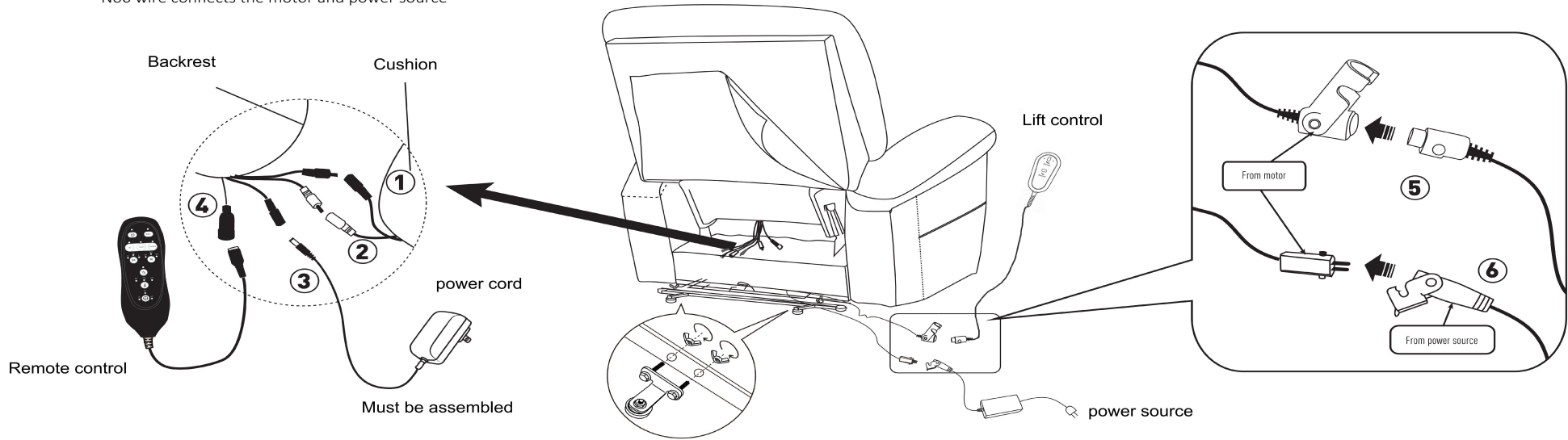


STEP 8

- No1 and No2 wire connect with backrest and chair base
- No3 wire connects with backrest and power cord
- No4 wire connects with backrest and remote control
- No5 wire connects the motor
- No6 wire connects the motor and power source

NOTE

- 1:Two same color wires connect.
- 2:Plug powercord and power source into outlet, then you can use all function.



How to recline?

How to get footrest latch down and stand?

How to use remote control?

