

ASSEMBLY INSTRUCTIONS

Parts:

(1) 5/8" thick shelf



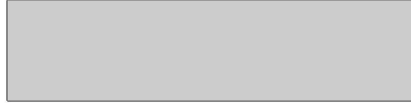
(2) 1/8" thick shelves



(1) Top and Bottom



(2) Backs



(2) 5/8" thick and (2) 1/8" thick dividers



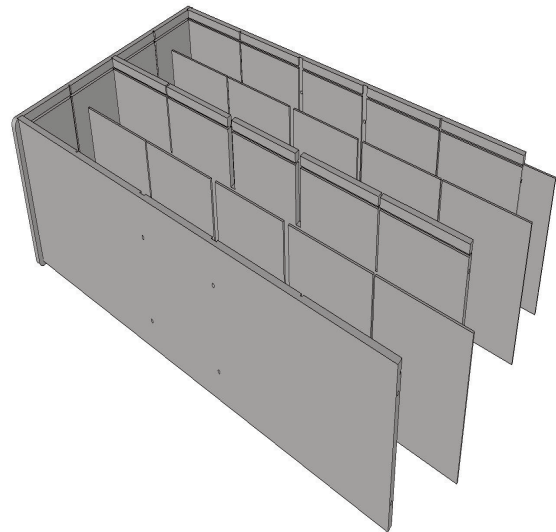
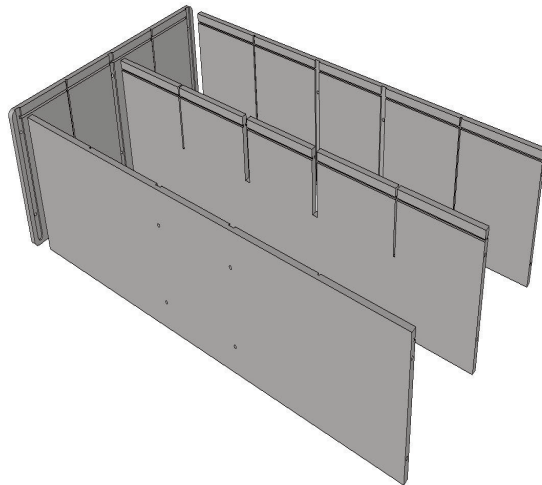
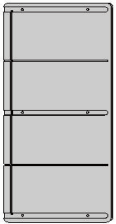
Hardware:

(20) Hex screws

(1) Allen wrench

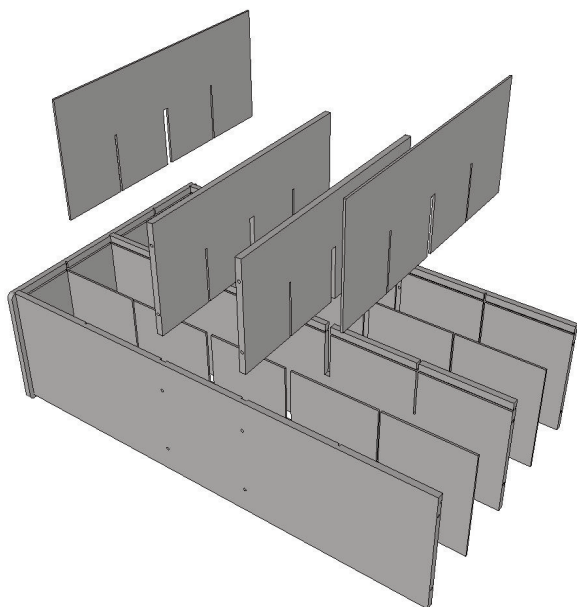


(2) Sides

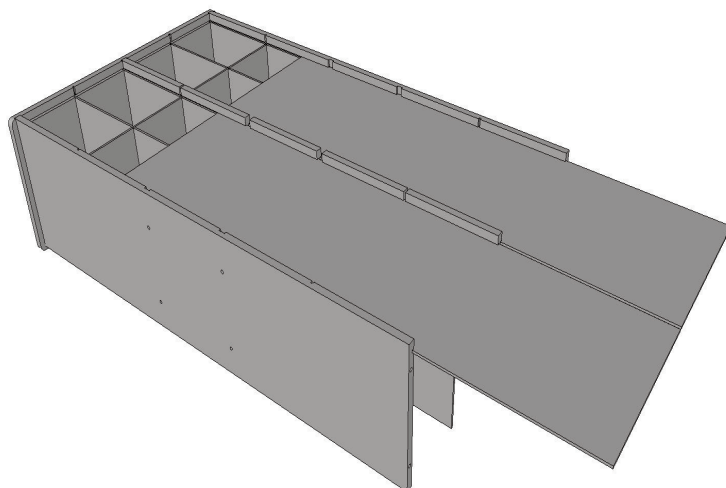


Step 1: Attach **Top**, **Bottom**, and **5/8" thick shelf** into a **Side** piece using (6) supplied **Hex screws** and **Allen wrench** provided. Back grooves in Top and Bottom, -cuts that go all the way through from short end to short end, align with 3/8" deep back groove in Side piece. Back grooves face inwards towards middle of Side piece. Slots in 5/8" thick shelves also point towards 3/8" deep back groove in Side piece.

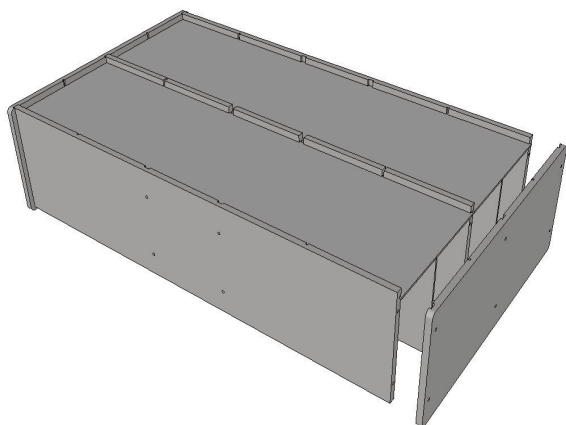
Step 2: Slide **(2) 1/8" thick shelves** into place between 5/8" thick shelf and Top and Bottom. No hardware is required in this step.



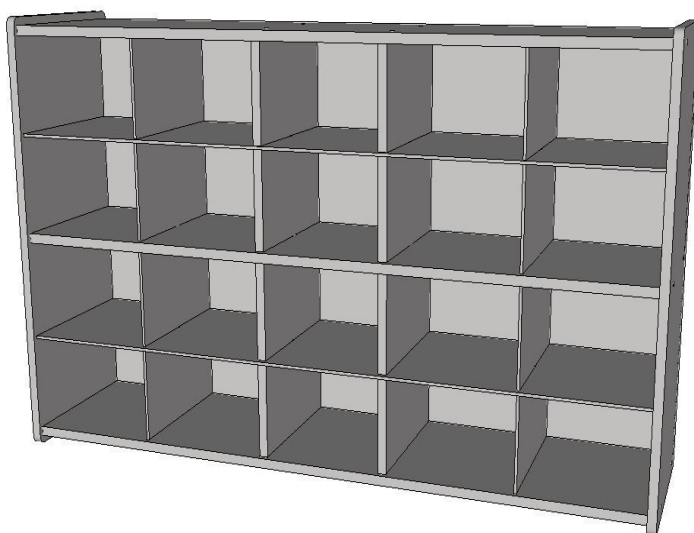
Step 3: Attach **(2) 5/8" thick dividers** to Top and Bottom pieces using **(8)** supplied Hex screws and Allen wrench. Slots in 5/8" thick dividers scissor into 5/8" wide slots in shelf piece. Backs of dividers, (top of dividers pictured above), sit below back grooves in Top and Bottom pieces. Repeat for **(2) 1/8" thick dividers**. No hardware is required to attach 1/8" thick dividers.



Step 4: Slide **(2) Backs** into place using back grooves in Top, Bottom, and 5/8" thick shelf. Backs will extend out past edge of Top, Bottom, and shelf. Do not force and make flush. Make sure backs are sitting in back groove of Side piece.



Step 5: Attach second **Side** piece using **(6)** supplied Hex screws and Allen wrench. Overhang on backs past Top, Bottom, and shelves will fit into deeper 3/8" back groove of second Side piece.



Step 6: Set unit upright, resting edges of Sides on floor. Tighten all screws snugly. **DO NOT OVER-TIGHTEN. DO NOT DRILL.** Assembly is now complete.