



USER'S MANUAL

Activity Ride-On TY327904

THIS INSTRUCTION BOOKLET CONTAINS **IMPORTANT** SAFETY INFORMATION. PLEASE READ AND KEEP FOR FUTURE REFERENCE.

Please give us a chance to make it right and do better!

Contact our friendly customer service department for help first.

Replacements for missing or damaged parts will be shipped ASAP!

Follow Costway

Visit us: www.costway.com



Contact Us!

Do NOT return this item.

Contact our friendly customer service department for help first.



Before You Start

Please read all instructions carefully and keep it for future reference.

General Warnings:

- ⚠ **Danger! Keep all small parts and packaging materials for this product away from babies and children, otherwise they may pose a choking hazard.**
- ⚠ **The product must be installed and used under the supervision of an adult.**
- ⚠ **Read through each step carefully and follow the proper order.**
- ⚠ **Remove all Packaging, separate and count all parts and hardware before Installation.**
- ⚠ **Please ensure that all parts are correctly installed, incorrect Installation can lead to a Danger.**
- ⚠ **We recommend that, where possible, all items are assembled near to the area in which they will be placed in use, to avoid moving the product unnecessarily once assembled.**
- ⚠ **Ensure a secure surface during construction, and place the product always on a flat, steady and stable surface.**

Warning:

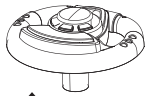
- 1-Ride-on car is designed for children 12-36 months old.
The rider's weight must not exceed 55 lbs. as there is insufficient strength to support overweight.
- 2-Product is designed to seat 1 child at a time to avoid injuries.
- 3-Parental guidance and supervision are strongly advised to ensure safe riding.
- 4-Adult assembly and installation of all parts are required to ensure safety.
- 5-Batteries to be handled by adults.
- 6-Take care of riding and avoid going near streets, crossroads, all traffic areas, swimming pools, and stairs.
- 7-Without regular check of the product, it will cause overturn or fall.
- 8-Check to see occasionally that the nut and bolt on the steering wheel is tight and secure.
- 9-Dangers may present if the product is not correctly assembled.
- 10-Shoes must be worn in use.

Battery Handling:

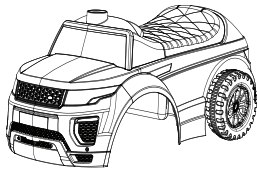
- 1-Battery must be handled by adults only, and use AA size batteries only.
- 2-Always remove exhausted batteries.
- 3-Always remove batteries when the unit is not going to be used for an extended period of time.
- 4-When replacing new batteries, always replace all batteries.
- 5-Different types of batteries or new and used batteries are not to be mixed.
- 6-Do not dispose of batteries in fire, batteries may explode or leak.

- 7-Non-rechargeable batteries are not to be recharged.
 8-Rechargeable batteries are to be removed from the toy before being charged.
 9-Rechargeable batteries are only to be charged under adult supervision.
 10-Batteries are to be inserted with the correct polarity.
 11-The supply terminals are not to be short-circuited.

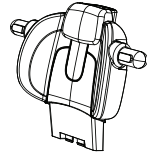
Parts List:



① Steering wheel



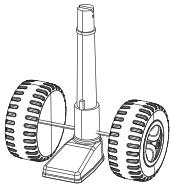
② Body



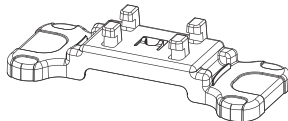
③ Backrest



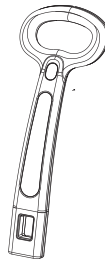
④ Nut



⑥ Fork



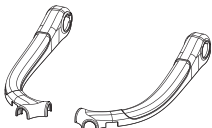
⑦ Footrest



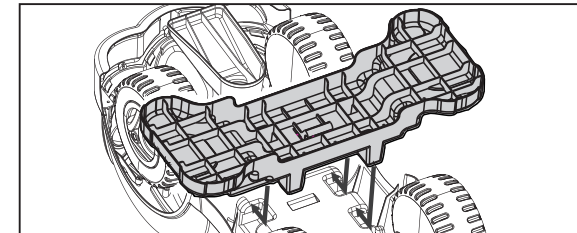
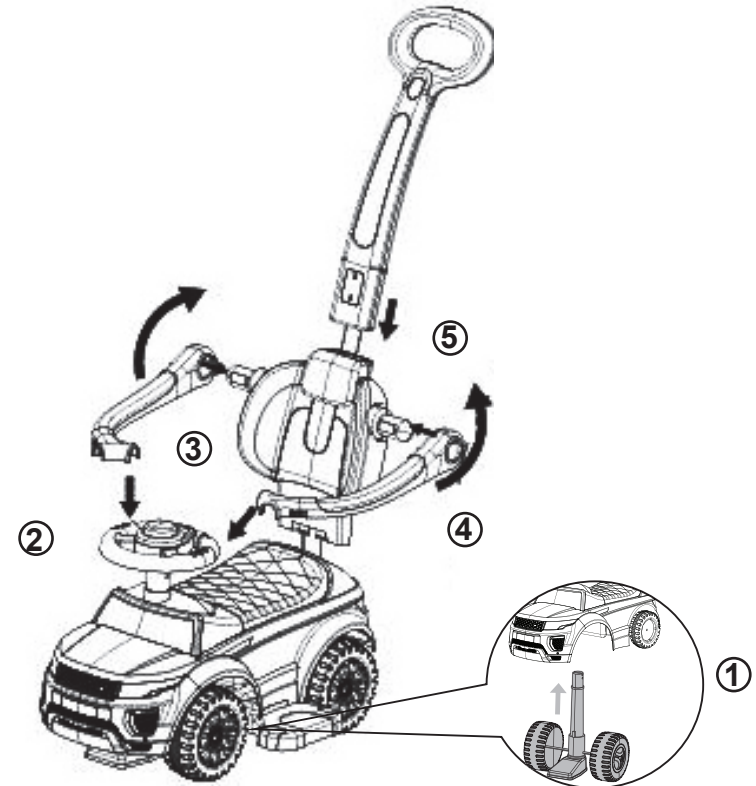
⑧ Push bar



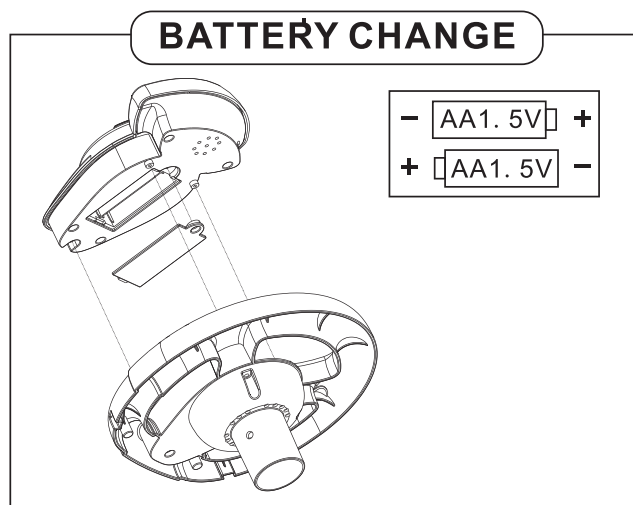
⑨ Bolt



⑤ Safety bar



- ❶ Insert the fork up through the hole in the front of the body and make sure the fork is positioned so that the supporter is facing the front.
- ❷ Insert the bolt into the hole of the steering wheel, then tighten the nut with a screwdriver.
- ❸ Insert the backrest into the hole in the back of the body, be certain the backrest is completely seated.
- ❹ Assemble the Safety bar into the backrest, then turn and fix in the steering wheel.
- ❺ Insert the push bar into the hole of the backrest.
- ❻ Insert the footrest into the hole in opposite of the body, then push the footrest according to the arrow show in the picture



How to change the battery (only for 614W)

- Loosen the three screws with a screwdriver, then take the music box out.
- Loosen the screw of the battery cover, please keep all the screws in a safe place away from children's reach.
- Put 2 AA batteries in the battery house.
- Then tighten all the screws with a screwdriver.

Welcome to visit our website and purchase our quality products!

Your suggestions and comments for COSTWAY are really important to us!

We sincerely solicit you to go back to our shop and leave a good rating in just a simple click. It would be quite encouraging if you could kindly do so like below:

★★★★★ Great products so far

February 24, 2019

Great products so far. Fast delivery, easy setup, and working without any issues.

With your inspiring rating, COSTWAY will be more consistent to offer you
EASY SHOPPING EXPERIENCE, GOOD PRODUCTS and EFFICIENT SERVICE!

US office: Fontana, California

UK office: Ipswich



- * Reward Points
- * Exclusive Customer Service
- * Personalized Recommendations
- * Permanent Shopping Cart
- * Order History

5 Star Rating



We would like to extend our heartfelt thanks to
all of our customers for taking time to assemble
this product and giving us valuable feedbacks.

