

Wall Mounted Installation Instructions



Parts



Hood



Tray



Water Distribution Unit with Baffle



Pebble Beach Shelf



Pebbles



Pump



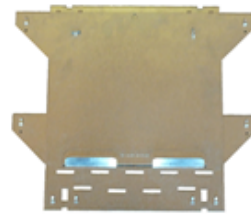
Hose



Hose Clamp



Zip Tie



EZ Install Bracket



Rubber Stopper



EZ Anchor



1" Grabber Screw



2.5" Grabber Screw



Leveling Wedge



Mirror Prep

* Mirror & glass panels ONLY



Halogen Bulbs

* Supplied as complimentary ONLY



Power Cord



Scotch-Brite Pad



Pump Pad

Quantity per Fountain

Fountain Parts	Whispering Creek 22"W x 46" H x 5"D	Reflection Creek 38"W x 27"H x 5"D	Cascade Springs 25"W x 54" H x 6"D	Aspen Falls 50"W x 54"H x 6"D	Olympus Falls 75"W x 54"H x 6"D	Sunrise Springs 52"W x 35" H x 6"D	Inspiration Falls 30"W x 69"H x 6"D	Cottonwood Falls 61"W x 69"H x 6"D	Deep Creek Falls 91"W x 69"H x 6"D	Majestic River 54"W x 69"H x 6"D	Solitude River 78"W x 69"H x 6"D	Regal Falls 120"W x 69"H x 6"D	Summit Falls 40"W x 7 4"H x 6"D	Teton Falls 61"W x 45"H x 6"D
Hood	1	1	1	1	1	1	1	1	1	1	1	1	1	1
Tray	1	1	1	1	1	1	1	1	1	1	1	1	1	1
Water Distribution Unit	1	1	1	2	3	1	1	2	3	1	1	4	1	1
Baffle	1	1	1	2	3	1	1	2	3	1	1	4	1	1
Pebble Beach Shelf	1	1	1	2	3	1	1	2	3	1	1	4	1	2
Bag of Pebbles	1	2	2	4	6	3	2	4	6	4	6	8	3	4
Pump	1	1	1	2	3	1	1	2	3	2	3	4	1	2
1" Grabber Screw	15	15	15	30	45	15	15	30	45	30	45	60	15	30
2 1/2" Grabber Screw	5	5	5	10	15	5	5	10	15	10	15	20	5	10
Rubber Stopper	2	2	2	4	6	2	2	4	6	4	6	8	2	4
Zip Tie	2	2	2	4	6	2	2	4	6	4	6	8	2	4
Leveling Wedge	1	1	1	2	3	1	1	2	3	1	1	4	1	1
Hose Clamp	2	2	2	4	6	2	2	4	6	4	6	8	2	4
EZ Anchor	12	12	12	24	36	12	12	24	36	24	36	48	12	24
Mirror Prep *	1 (1 oz. Bottle)	1 (1 oz. Bottle)	1 (1 oz. Bottle)	1 (4 oz. Bottle)	1 (4 oz. Bottle)	1 (1 oz. Bottle)	1 (1 oz. Bottle)	1 (4 oz. Bottle)	1 (4 oz. Bottle)	-	-	1 (4 oz. Bottle)	1 (4 oz. Bottle)	1 (4 oz. Bottle)
Pump Pad	1	1	1	2	3	1	1	2	3	2	3	4	1	2
Scotch Brite Pad	1	1	1	2	3	1	1	2	3	2	3	4	1	2
Hose	1	1	1	2	3	1	1	2	3	2	3	4	1	2
Power cord	1	1	1	1	1	1	1	1	1	1	1	1	1	1
Light Bulbs	2	3	2	4	6	4	3	6	9	6	9	12	4	6

* Mirror Prep is sent with Mirror and Glass Panels ONLY

Before You Get Started

Be sure to follow all the safety suggestions and instructions before you begin the installation.

Tools Needs

- Drill with a Philips head bit
- Carpenters level
- Stud finder
- Pencil
- Philips head screw driver
- Flat head screw driver
- Chisel
- A Pair of pliers
- Knife and scissors
- Tape Measure
- Step Ladder
- A scrap piece of 2x4 or other wood
- And a good pair of working gloves for everyone involved



Choosing a Location

Most likely you have already decided on a location for your new Adagio Water Feature. In the event that you are still undecided, we would like to suggest a few things to help you make your decision.

Wall types: Your water feature can be hung on a number of different wall types. We are going to discuss the steps for hanging it on a **wood studded sheet rock wall**. You can hang it on tile, stone, concrete, block, or a sheet rock wall with metal studs. (Please note: The hardware included is designed for a wood-studded sheet rock wall. You may need additional hardware for other wall types.)

Framing: As a general design idea it is often best to allow enough wall space to properly frame the water feature. Depending on the surrounding décor, you may want to allow for open wall space on all four sides. (You will need at least 6 inches of space at the top and bottom of the feature.)

Access: The most demanding maintenance requirement associated with the water feature is keeping it full of water. To facilitate maintaining the proper water level we suggest placing the fountain in a location that is easily accessible.

Traffic: The hood and tray of the water feature will project 5 or 6 inches out from the wall. Because of this, if it is placed in a narrow walkway it can act as a barrier to traffic. We suggest placing it in an area that will not interfere with the traffic flow of the space.

Power: The water feature requires 110 Volt 60 Hz power and will operate at less than 10 amps. When deciding on the location of your water feature you need to consider a power source. For aesthetic reasons we suggest placing an outlet directly behind the water surface in the middle of the EZ Install Bracket. This allows the cord to be hidden. If you are going to have an electrician install an outlet, we suggest having it wired to a wall switch for ease of turning it on and off.

A – Unpacking the Crate Box

Before beginning the installation we suggest unpacking and un-wrapping everything. Set it aside to avoid damaging it or hurting yourself.

IF ANY ITEMS WERE DAMAGED IN TRANSIT PLEASE CONTACT IMMEDIATELY!!

~ We will not assume responsibility for freight damages not reported **within 48 hours of delivery**. Please take photos of any damaged items; this will assist us in sending you replacement parts. ~

B - Marking the Wall

After you have selected the location of your water feature, you will need to mark the wall in a few places.

(1) First, you need to have a clear idea of where on the wall the water feature is going to hang. To help with this please refer to the chart on page 2 for dimensions. **(2) Next, using a pencil put a small dot on the wall to represent the top center.**



C - Assemble the EZ Install Bracket

The EZ install bracket comes in multiple pieces. **(1) Disconnect the pieces by unscrewing the wing nuts holding the bracket together.** These wing nuts are only used for packing and can be discarded. There is a top, bottom, and side straps with each bracket.



(2) Clip together all the bracket components. The straps have two rectangular cut-outs on either end. They will connect to two hooks that are on the top and bottom pieces of the bracket. You may want to use your pliers to ensure a snug connection.



~ Water features with multiple panels may have additional straps to connect the multiple EZ Install Brackets together.

D – Mounting the Bracket to the Wall

(1) Approximately one half inch below the dot you marked as the top center; install one EZ anchor into the wall. If this spot happens to be where a stud is, an EZ anchor is not necessary. Simply screw one of the 2.5 inch grabber screws directly into the stud. Otherwise screw the 1 inch grabber into the EZ anchor. Do not tighten the screw all the way. The screw will be used to hang the bracket.

~ With some multi-panel features it is best to hang the bracket from the center strap. In this case, the center screw should be approximately 7.5 inches down from the top.



(2) Next, hang the assembled EZ install bracket on the screw by the key-hole shaped opening at the top center. This opening will allow you to remove and replace the bracket easily; it will also allow you to easily level the bracket.



(3) Use a carpenter's level to ensure that the bracket is level and mark all the holes including the slots with a pencil. Once this is done remove the bracket and set it out of the way.

(4) Now, using a stud finder mark the wall where any studs are. The holes at the top and at the bottom require EZ anchors unless they happen to be over a stud. If so, no EZ anchor is necessary and you can screw directly into the stud with the 2.5" grabber screws.

The slotted holes toward the center of the bracket carry almost all the weight of the panel and are the most critical. **You must be able to fasten into at least one stud in this area.** If you can fasten to more than one stud or screw more than one screw into a single stud it is even better.

(5) After determining where the studs intersect these slots, install the remaining EZ anchors as evenly as possible to disperse the weight over a large area. Now that the wall is fully prepared, it is time to mount the bracket. Hang it back on the top center screw and double check that it is level one more time.

(6) When everything is ready, screw the 2.5 inch grabber screws into the stud or studs and the 1 inch grabber screws into the EZ anchors. Make sure the bracket is level and all the screws are tight including the top center screw.

(7) Lastly, press the one inch rubber stoppers onto the small screw pegs.



E - Preparing the Stone and Water Distribution Unit

Each stone water feature uses 100 % natural stone, and is unique and different. Because of this, we have designed the water distribution unit to allow customization to any stone. While a helper holds the stone, fit the water distribution unit on the top. There are a few things to look for and adjust while fitting the water distribution unit properly.

(1) First, be sure it fits tightly on to the stone. You can adjust the tightness using the tabs on the back of the distribution unit.

(2) Next, insure the bottom front lip forms to the face of the stone. Because the stone is natural and unpredictable it may have edges and clefts that create gaps between the lip and the face of the stone. The water distribution is made of a very pliable copper and designed to be bent both in and out to fit the contours of the stone. Make the necessary adjustments to the lip by bending it in and out until it fits properly and remains as flush as possible across the stone. Note: In order for the copper to adjust properly, you will want to remove the water distribution unit from the stone before each bend. The metal is very elastic and will not form properly if left on the stone.



~ This adjustment is generally only necessary for Slate and Travertine surfaces.

~ For the Majestic River and Solitude River, these adjustments should be made after the stones are hung on the wall.



(3) Once you feel comfortable with the fit, remove the water distribution from the panel and fasten the hose to the copper piping. Ensure the end of the hose is pushed past the lip where the copper piping widens. Then use the supplied hose clamp or zip tie to strengthen and tighten the fitting to ensure that no water can escape. **(4) Then replace the water distribution on the top of the panel.**

F – Electrical Outlet

You will notice the open space in the center of the EZ install bracket. If you decide to wire an outlet behind the stone to allow for a concealed power cord, this is the area you want the outlet to be. We also recommend wiring the outlet to a wall switch for ease of turning the water feature on and off. It is okay not to wire an outlet behind the panel; we will cover how to run the cord for this option later.



G - Hanging the Panel

~ Some multi-panel features have a decorative wall cover. It is best to hang the wall cover(s) before the panels. The top of the wall cover is the side with the least amount of space between the notches and the end. **Note: We recommend measuring each side to determine the top from the bottom.**

~ If you have a Majestic River or Solitude River the water distribution unit will need to be installed after the panels are hung and the hoses will need to be fed down through the notch in the bracket.

(1) If you have wired an outlet behind the feature make sure to plug in the white power cord before hanging the panel. Once the panel is on the wall it is very difficult to access the outlet.

(2) Be sure when hanging the panel that the hose attached to the water distribution unit falls inside the notch of the panel bracket. You may use some tape to ensure it stays there.

The panel comes with a mounting bracket already attached to the back. **(3) To hang the panel on the wall simply, lift it until the downward pointing lip on the bracket nests with the upward pointing lip on the EZ install bracket.** Near the bottom, the panel should rest on the one inch rubber stoppers.



Warning:

Each stone slab is very heavy. We strongly recommend using two or more people to lift it onto the wall.

It is a good idea to use a scrap piece of wood to set the stone on before you lift it. This will allow you to get your fingers underneath the slab without the risk of hurting yourself (with multi-panel features, repeat this process until all panels are hung on the wall).



H – Attaching the Pump to the Hose

(1) You may need to trim the hose a little to allow the pump to point straight up. The hose should be cut to allow approximately 1 to 2 inches below the bottom of the slab.

(2) Next apply the black pump pad to the bottom of the pump. When installed, the pump should rest on the pump pad and should not touch the back of the water tray. This will help in quieting the sound of the pump.

(3) Now, slide the hose onto the water nozzle and apply a hose clamp or zip tie to ensure a tight fit. For larger features, you will need to direct the pump so the filter screen is at a “ten o’clock” position in the tray (see illustration to the right), this will help the nozzle point up (The pump should be hanging beneath the slab). Note: the pump may tilt slightly when in the tray; this is ok as long as your pump is still resting on the pump pad.

The electric cord from the pump will go up and behind the right side of the panel, and will plug in later. Make sure it is free from any kinks.



I - Hanging the Tray

You will notice small square cut outs on the back of the water tray. These squares receive the hanging hooks on the EZ install bracket.



(1) Slide the plastic back-splash-guard up and behind the panel and pump, then line up the squares with the hooks and press the tray down and towards the wall until it is hooked firmly in place. The hooks on the bracket can be slightly adjusted out with a flat head screw driver to help ease the connection.

(2) If you do not have an electrical outlet behind the panel, we recommend hanging the white power cord down behind the water tray. Leave approximately 6 inches of exposed cord. You can adjust the cord length later.



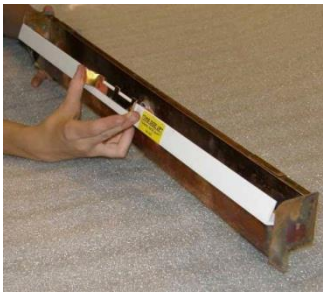
J - Testing Water Flow

(1) **The final step in preparing the water distribution is to clean the front surface of the unit with the supplied scotch-brite pad.** Rub the pad back and forth on the entire surface until it is noticeably cleaner and shinier. Be sure to clean over the top edge and the bottom lip thoroughly. **DO NOT** touch the copper unit with your fingers to try and even the water flow, as this can leave natural oils that block the water from flowing over the distribution unit.

(2) **Then, fill the tray with water until the pump is completely submersed. DO NOT OVERFILL!** We strongly suggest using distilled water. This should prevent any hard water build-up on the stone or metal. When filling the tray it is best to pour the water onto the panel. This will minimize splashing (see maintenance pg.12).

(3) **Now, plug the pump into an outlet or extension cord.** This is for testing purposes only. It usually takes ten to twenty minutes for the entire stone to get completely wet.

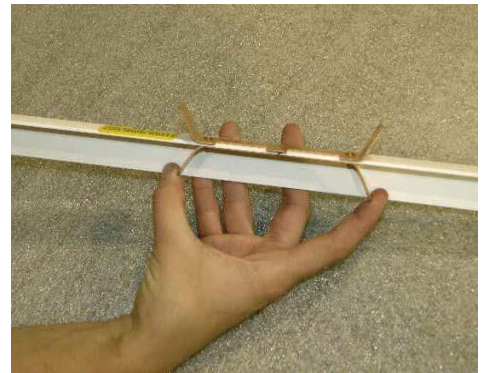
After this time you should be able to tell if there are going to be any dry spots. If there is any area of the water distribution unit that water is not flowing over, you will want to turn the feature off and make the following adjustments.



(a) Remove the white baffle from the water distribution unit. To do so, flatten the upper set of copper tabs on the white baffle, this will allow it to roll up and out of the distribution unit.

(b) On the underside of the white baffle you will notice an additional set of copper tabs (**you must remove the baffle completely to access these tabs**). These tabs act as small dams for the water. The water enters the distribution unit directly in the middle of these two tabs. The tabs

can be adjusted in or out to direct the water flow to each side or in the middle. These two tabs are **ONLY** used for water flow adjustments.



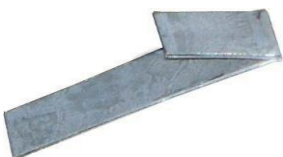
For Example: If you are experiencing lack of water flow in the middle you will want to adjust these tabs down to dam more water towards the middle of the water feature.

(c) Now reinstall the baffle into the distribution unit and bend the upper copper tabs back into place. These tabs strictly hold the baffle in place. You do not need to force the tabs up. Bend them up until the baffle will not come out of the distribution unit, but still has a little room to move.

(d) Before turning the water back on, clean the copper distribution unit with the scotch-brite pad again. This will remove any natural oils that may have been transferred from your fingers.

You may need to repeat this process until you have the desired flow.

The outer edge adjusting tabs are used to control water flow at the edges of the panel. If there is a large amount of water flow at one or both edges you may experience a small amount of dripping off of these tabs. (4) **If this occurs, simply bend the tabs in and back to redirect the water onto the panel.** The tabs should be bent in to touch the front of the copper distribution unit.



(5) **Because each installation may vary just a little, your water distribution unit may need to be leveled.** The included leveling wedge can be used to shim either side up until it is level. The wedge is made of a very pliable metal and can be adjusted open or closed to a variety of heights. Simply adjust the wedge to the height you expect and insert it under the water distribution unit (between the unit and the top of the panel). Then place your carpenter's level on the top lip of the water distribution unit and adjust it until it is level.

For slate surfaces



(6) Take a moment to look for small splashes coming off the slate. They are usually caused by small edges in the rock. These are very easy to fix. Simply take a flat head screw driver or a chisel and wear away the edge a little to smooth it over. The smoother it is the less likely water is to jump off. Go over the entire stone and smooth any edges you think may cause splashing (**Only do this when the water feature is off**).

(7) After you feel you have the water distribution set, turn off the water feature and lightly go over the stone with the scotch-brite pad while it is still wet. This will help the water to completely cover the stone.

DO NOT apply the scotch-brite pad to glass, mirror, or custom engraved logos – they can get scratched

K - Hang the Hood

You will notice the same square cut-outs in the back of the hood that were on the water tray.

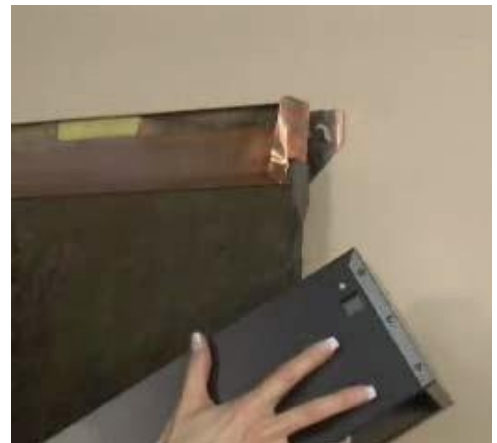
(1) Slide the hood over the stone and water distribution then attach it to the EZ install bracket hooks. The hooks can be slightly adjusted out with a flat head screw driver to ease the connection.

(2) Now you can plug the white power cord from the wall into the connection at the left end of the light bar and the power cord from the pump into the outlet on the right side. If there is excess cord you can tuck it behind the panel and water distribution unit.

If you have a multiple panel water feature, the plug for the each pump will be directly above each panel. Run the cord up the right side of the panel and plug it in.

(3) Next, screw the supplied light bulbs into the sockets:

50 watt halogen PAR 20 or 50 watt halogen GU 10 bulbs are included as a courtesy (these bulbs are not covered under the warranty). Replacement bulbs can be purchased at most hardware stores.



Warning: As always, never remove or insert the power cords or light bulbs while the water feature is turned on. Doing so could result in electric shock.

L - Install Pebble Beach



The pebble shelf is made of a spring-style plastic. The tension from the plastic is used to hold the shelf in place. If the shelf is out of the tray for too long it can begin to straighten and may need to be bent back into shape with your hands. Before installing the shelf be sure to over bend it a little to allow it to fit into the tray. Slide the pebble shelf into the water tray until the upward pointing front lip is secured under the front edge of the tray.



Be sure the pump does not touch the shelf. The back lip of the shelf can be adjusted by loosening the screws. You will want the lip 1/8 of an inch away from the water surface so the water will flow without splashing. The pebbles will rest on this shelf. **Be sure no pebbles are touching the water surface as this may cause splashing.**



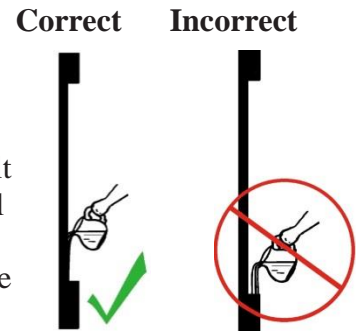
~ When filling/refilling your water feature make sure to keep the water filled above the pump and no higher than the water fill line on the warning label. Do not fill the feature while it is on as this can cause overfilling of the liner. Overfilling the liner forces water between liner and tray, this can cause the tray to leak.

Thank you again for your interest in our products. If you ever have any questions please feel free to call our customer service

Maintenance

Filling the Water Tray:

The biggest maintenance requirement is keeping the water tray full of water. The amount of use and the climate will determine how often you need to fill it. Be sure the water level stays at least above the top of the pump and never past the water fill line or above the Pebble Beach Shelf. Filling the water tray more than this can result in water going over the top of the plastic liner and leaking onto the floor. **ONLY** fill the water tray when the water feature is turned off. To fill the tray, pour the water onto the water surface (stone, glass or mirror). This allows the water to flow into the tray without splashing.



To avoid almost all cleaning and to prolong the life of your water feature, **we strongly suggest** using distilled water. This will not leave hard water build-up on the stone or metal.

Cleaning Metal:

When it is time to clean the metal portion of the water feature we recommend using a non-abrasive cleaner with ammonia in it. Most window or glass cleaner works well.

Dull Stone:

Over time, if the stone color dulls or you begin to accumulate hard water buildup, turn off the pump and scrub the stone vigorously with a firm bristled acrylic brush. This should remove most of the buildup. If it does not, the stone may require a more aggressive cleaning with Lime-A-Way or CLR.

For cleaning custom engravings please see below.*

Foul-Water / Algae:

If your water feature is in direct sunlight or near a window or door that is often open the stone may begin to grow algae. This manifests itself as a slight slime on the stone or a foul-water smell. The best way to combat this is with a few drops of bleach once or twice a month. **We cannot emphasize enough the importance of using only two or three drops at a time and never more than once a week.** Too much bleach will bleach the stone and create an uncomfortable chlorine smell. The use of too much bleach will void all warranties.

Full Fountain Cleaning:

We recommend doing a full fountain cleaning once or twice per year if using distilled water. We recommend cleaning it more often if using tap water. This will involve removing all the water from the water tray and cleaning it out, scrubbing down the stone with an acrylic brush, and taking apart the Water Distribution Unit and cleaning it.

*Custom Engraving:

If your stone has a custom engraving, **DO NOT** use the scotch-brite pad, acrylic brush or any sort of chemical over the area of the engraving. This could result in the custom color being removed from the stone. We recommend going over the area with a soft cloth and distilled water.

One Year Limited Warranty

1. WHAT THIS WARRANTY COVERS

Defects in the following manufactured components:

Hood, tray, plastic liner, installation brackets, water distribution items, stone*, glass, mirror, Featherstone, electrical components, light bar, and wiring. These components are covered by a One (1) Year (from the date of customer purchase) Limited Warranty against defects in product, workmanship, or material.

*Natural Stones: Fissures, fill materials in cavities, flaking of layered stone surfaces, and chips off corners that do not inhibit the performance or aesthetics of the water feature are part of our natural stones and do not constitute a warranty claim.

Defects in the following non-Adagio manufactured components:

- **Re-Circulating Pump**

We do not manufacture the pump(s) included with the water feature. As a courtesy to our customers, We will replace any defective pump within 30 days of receipt by the original user. If you experience a problem with your pump after the initial 30 days, please refer to the warranty provided with your pump. Please do not discard this written warranty. You will need to provide a proof of purchase (with date) when submitting any claim to the pump manufacturer. If you cannot locate the warranty, or if you have any questions, please feel free to contact us at **1-888-623-2446**.

- **Remote Control**

We do not manufacture the remote control included with certain water feature models. As a courtesy to our customers, We will replace any defective remote control within 30 days of receipt by the original user. After this initial period, all warranty claims related to remote controls must be addressed directly to the remote control manufacturer. Each remote control includes a warranty from the remote control manufacturer. The written warranty is included in the packaging of the remote control. Please do not discard this written warranty. You will need to provide a proof of purchase (with date) when submitting any claim to the remote control manufacturer.

2. WHO IS COVERED

This Warranty extends only to the original purchaser and/or the “original end user.” Original end user is defined as the “first owner” to install and operate the product. As the original purchaser and/or original end user are covered under the One (1) Year Limited Warranty, proof of purchase (and purchase date) will be required before any Adagio product will be covered under this Warranty.

3. WHAT WE WILL DO TO CORRECT WARRANTY PROBLEMS

Adagio will repair or replace (at our option) the defective component(s), unless the alleged defect is caused by faulty installation, user negligence or abuse.

4. HOW TO GET WARRANTY SERVICE

Please Call Us – Do Not Ship.

Have your original proof of purchase (and date of purchase) available when you call.

5. REPLACEMENT PARTS

We reserve the right to charge for any warranty part not returned to us as requested.

Replacement parts will be shipped after receipt and qualification of the original defective part(s).

Expedited Shipment:

If expedited shipment of the replacement part(s) is requested, these part(s) must be purchased and shipped at the end user’s expense. A credit for the part(s) will be issued once is in receipt of the original defective part(s) and the part(s) are deemed to be defective and covered by the One (1) Year Limited Warranty, subject to availability.

Mistaken Defects:

If a returned part(s) is deemed to have no defects in the actual product, workmanship, or material; or, the One (1) Year Limited Warranty is voided (see section 7 below), then any replacement part(s) will not be covered under this Warranty, and the customer will have the following options:

- a) Have the original part returned to customer at customer expense.
- b) Purchase a new replacement part and have it shipped to customer.

Note: In the event that the expedited shipment option was used, no refund will be issued.

6. SHIPPING AND HANDLING CHARGES

This Warranty covers shipping to and from for the first 30 days after purchase by the original purchaser and/or the “original end user” as previously defined. In order for shipping to be covered under this Warranty, defects must be reported within the first 30 days after purchase by the original end user.

Mistaken Defects: should the returned part(s) be deemed to have no defects in product, workmanship, or material, the customer agrees to pay for all shipping charges incurred, both to and from.

7. WHAT THIS WARRANTY DOES NOT COVER (Express Exclusions)

- Products that are operated in combination with other equipment not furnished or otherwise authorized by us for use with our products.
- Damage occurring during shipment.
- Damage resulting from someone other than (or its authorized service technicians).
 - Post-purchase product damage, including, but not limited to the following acts: misuse, testing, adjusting, installation, maintenance, alteration, modification, tampering, or servicing.
- **Any of the following events void the Warranty:**
 - Defects or damage resulting from:
 - a) Use of the product in a manner that is not normal or customary;
 - b) Improper operation, misuse, or abuse;
 - c) Accident or neglect, such as dropping the product(s);
 - d) Contact with sand, dirt, extreme heat, spills of food or liquid, other than water;
 - e) Any products or parts not supplied by us with the original product.
- Damage resulting from “Acts of God” or Nature, including, but not limited to: fire, storm, earthquake, hurricane, or flood.
 - Defects or damage resulting from acts of war or violence, including, but not limited to: atomic blast, bombings, vandalism, drive-by shootings, and robbery.
- Physical damage to the surface of the products, including scratches, cracks, normal wear-and-tear, or other damage to externally exposed parts.
 - Damage resulting from failure to maintain an appropriate water level necessary for optimal performance of product.
 - Damage or discoloration resulting from failure to clean or maintain the pump, stone, and/or any metal.
 - Color changes on the metal due to the natural patina process.

Flat-rate charges may apply to the repair of products not covered by this Warranty. To obtain information regarding products needing repairs not covered by this Warranty, we will provide information on repair availability, rates, payment methods, and where to send the components.

8. OTHER LIMITATIONS

This is a complete Warranty for our products; it states your exclusive remedies. This Warranty is given in lieu of all other expressed or implied warranties.

In no event shall we be liable, whether in contract or tort (including negligence), for damages in excess of the purchase price of the product; or, for any indirect, incidental, special, or consequential damages of any kind; or for loss of revenue or profits, loss of business, loss of information or data, or other financial loss arising out of, or in connection with, the ability or inability to use the products, to the full extent these damages may be disclaimed by law.

9. STATE LAW AND OTHER JURISDICTION RIGHTS

This Warranty shall be governed under the laws of the State of Utah. Other states and/or jurisdictions may not allow some of the provisions specified in this warranty. If so, those provisions may not apply to you. The remainder of this Warranty, however, remains in full force and effect.