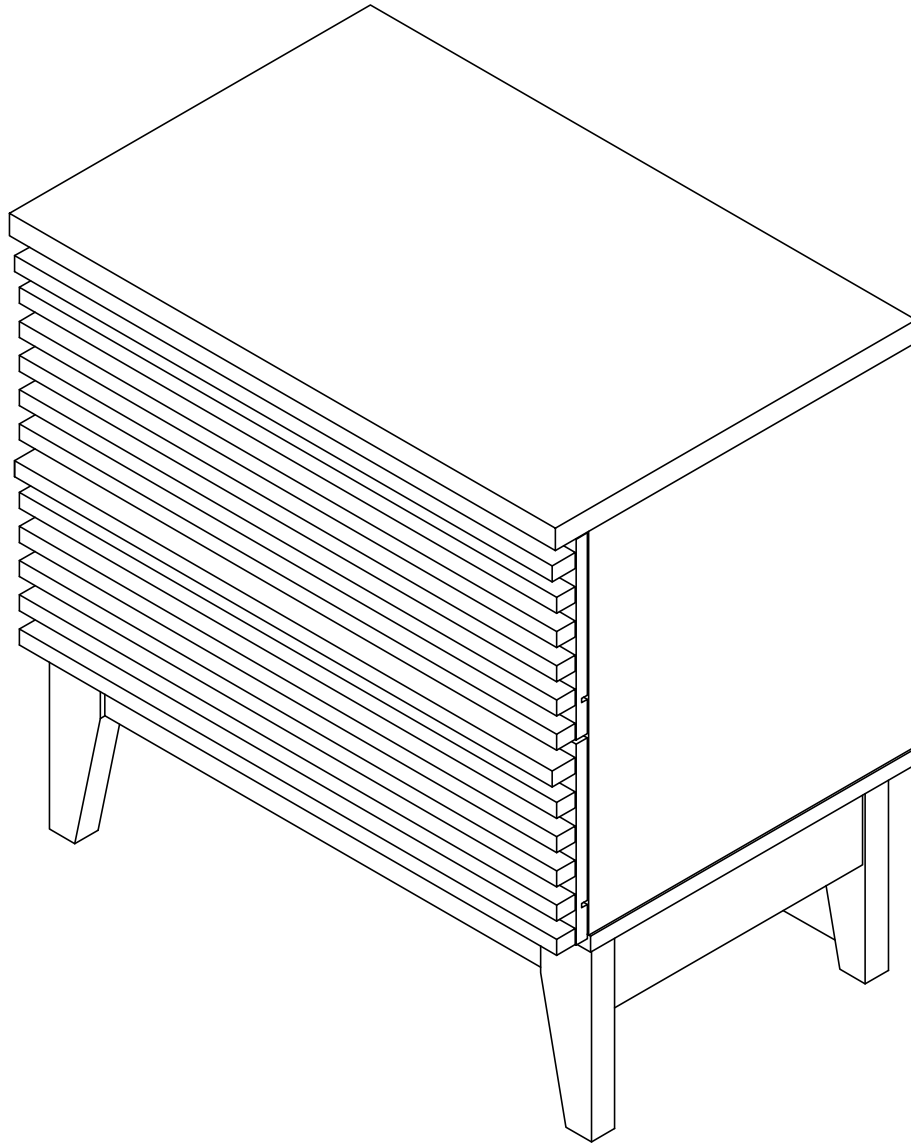


## ASSEMBLY INSTRUCTIONS

# MOD-6964-WAL

V1.01.07.21



**Questions? Contact us!**

609.256.9000 • [cs@modway.com](mailto:cs@modway.com)  
[www.modway.com](http://www.modway.com)

**\*modway**

# Let's get started!

\*modway



**Read through all of the instructions before starting**



**Care instructions are listed in the last step of this manual**



**Approx. 60 minutes assembly time**



**Make sure you have all parts and components before discarding any packing materials**



**2 people recommended for assembly**

**Only use hand tools to assemble this item.** Do not use power tools. Do not tighten bolts or screws completely until all hardware is lined up and inserted into the holes.

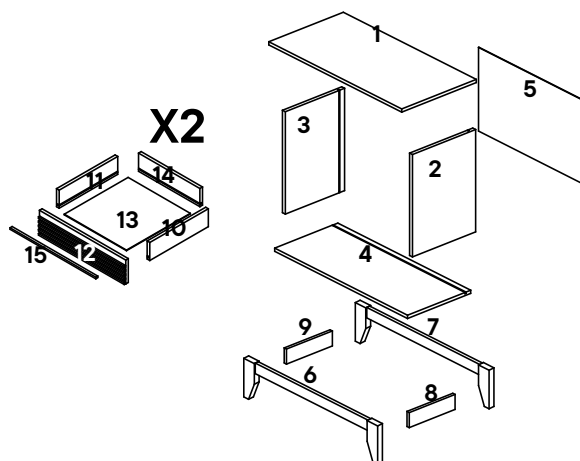
Do not over-tighten screws and bolts to avoid stripping the hardware or cracking the item.

Assemble your item on a flat, carpeted area, with plenty of space to work. This will prevent damage and scratches to your floors or the item while you're assembling the product.

Keep all components and packaging out of reach of children or animals to avoid risk of choking or suffocation.

## Furniture components:

1	Top Panel	x1	9	Left Leg Support	x1
2	Right Side Panel	x1	10	Drawer Right	x2
3	Left Side Panel	x1	11	Drawer Left	x2
4	Bottom Panel	x1	12	Drawer Head	x2
5	Back Panel	x1	13	Drawer Base	x2
6	Front Leg Panel	x1	14	Drawer Back	x2
7	Back Leg Panel	x1	15	Drawer Handle	x2
8	Right Leg Support	x1			



## Provided hardware:

A		JCBC M6 x 80mm	x2
B		Wooden Dowel Ø6 x 30mm	x36
C		Cam Lock- Ø15 x 12mm	x8
D		Cam Bolt- Ø6 x 32mm	x12
E		Floor Glide-B321	x4
F		C/board Screw Ø3.5 x 16mm	x32
G		C/board Runner Left	x2
H		C/board Runner Right	x2
I		Drawer Runner Left	x2
J		Drawer Runner Right	x2
K		JCBC M6 X 60mm	x4
L		Cam Lock- Ø12 x 9.9mm	x4
M		Plastic Corner Block	x4
N		Screw Ø4 x 19mm	x4
O		C/board Screw Ø4 x 25mm	x6
P		C/board Screw Ø4 x 38mm	x4
Q		Allen Key	x1
R		JCBCW M6 x 50mm	x4
S		Wooden Dowel Ø6 x 25mm	x6

## What you need:

Phillips Head Screwdriver  
Phillips

**Wait!**

**Missing parts or hardware? Need assistance?**  
Contact us before returning your item. We're here to help!  
609.256.9000 • [cs@modway.com](mailto:cs@modway.com)

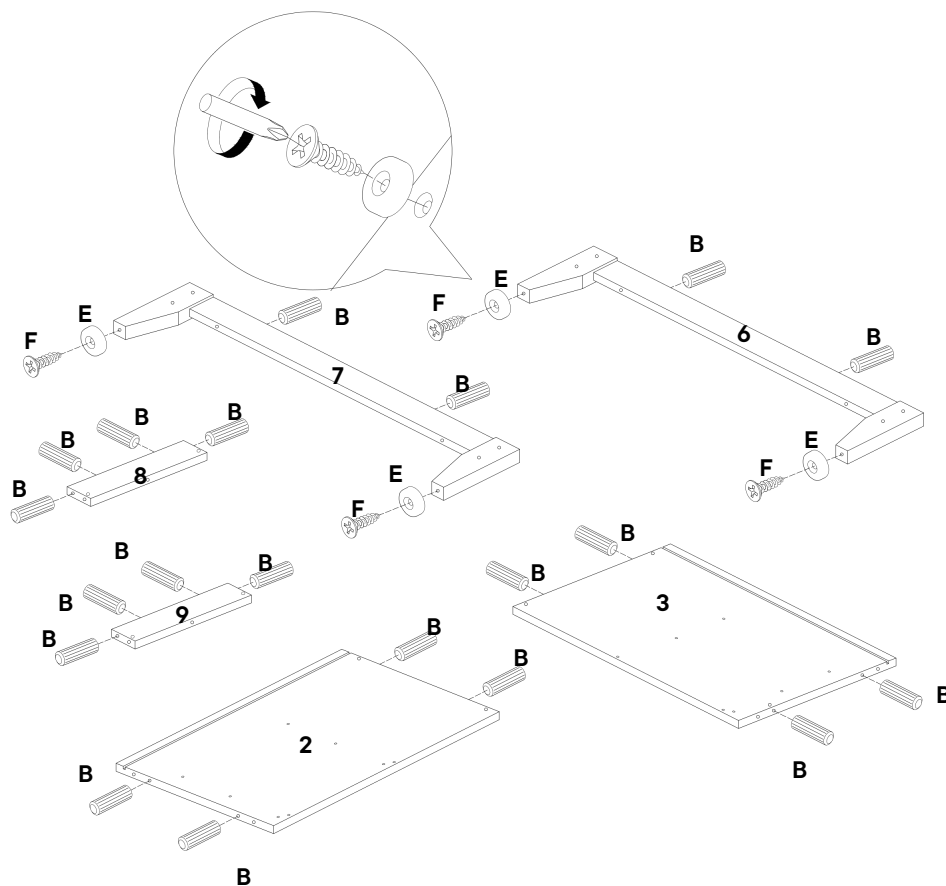
# Step 1

## HARDWARE

- B** Wooden Dowel Ø6 x 30mm x20
- E** Floor Glide-B321 x4
- F** C/board Screw Ø3.5 x 16mm x4

## COMPONENTS

- 2** Right Side Panel x1
- 3** Left Side Panel x1
- 6** Front Leg Panel x1
- 7** Back Leg Panel x1
- 8** Right Leg Support x1
- 9** Left Leg Support x1



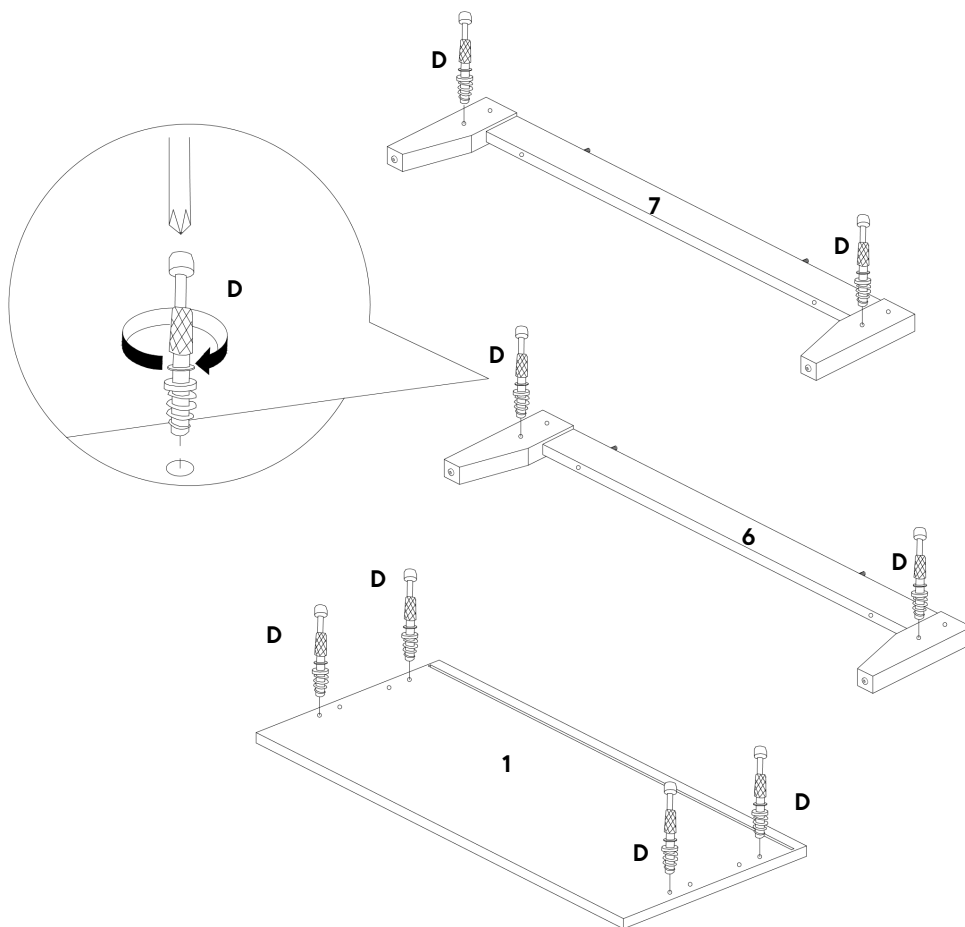
# Step 2

## HARDWARE

- D** Cam Bolt- Ø6 x 32mm x8

## COMPONENTS

- 1** Top Panel x1
- 6** Front Leg Panel x1
- 7** Back Leg Panel x1



# Step 3

## HARDWARE

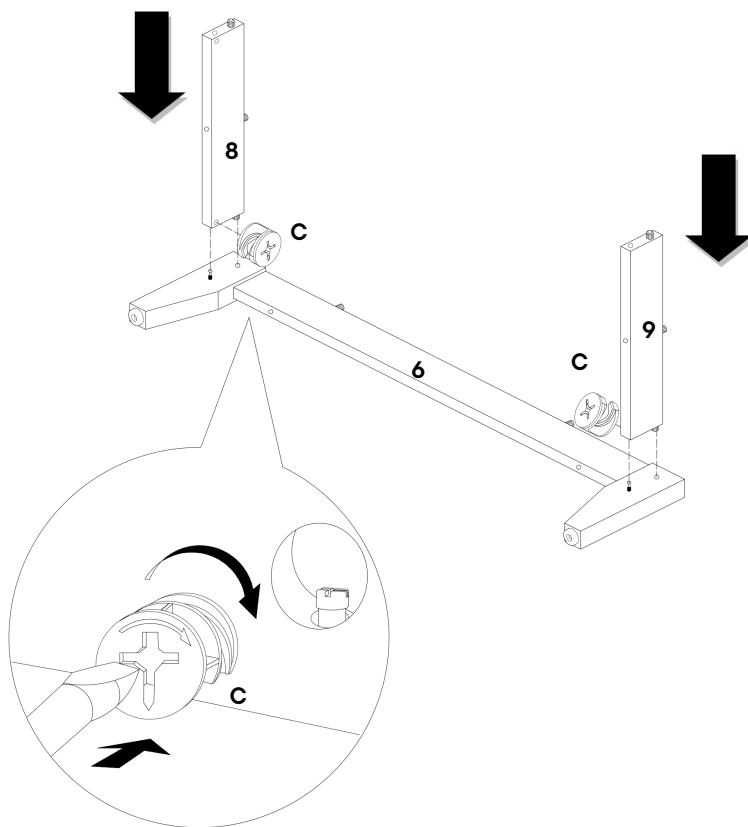
**C** Cam Lock- Ø15 x 12mm x2

## COMPONENTS

**6** Front Leg Panel x1

**8** Right Leg Support x1

**9** Left Leg Support x1



# Step 4

## HARDWARE

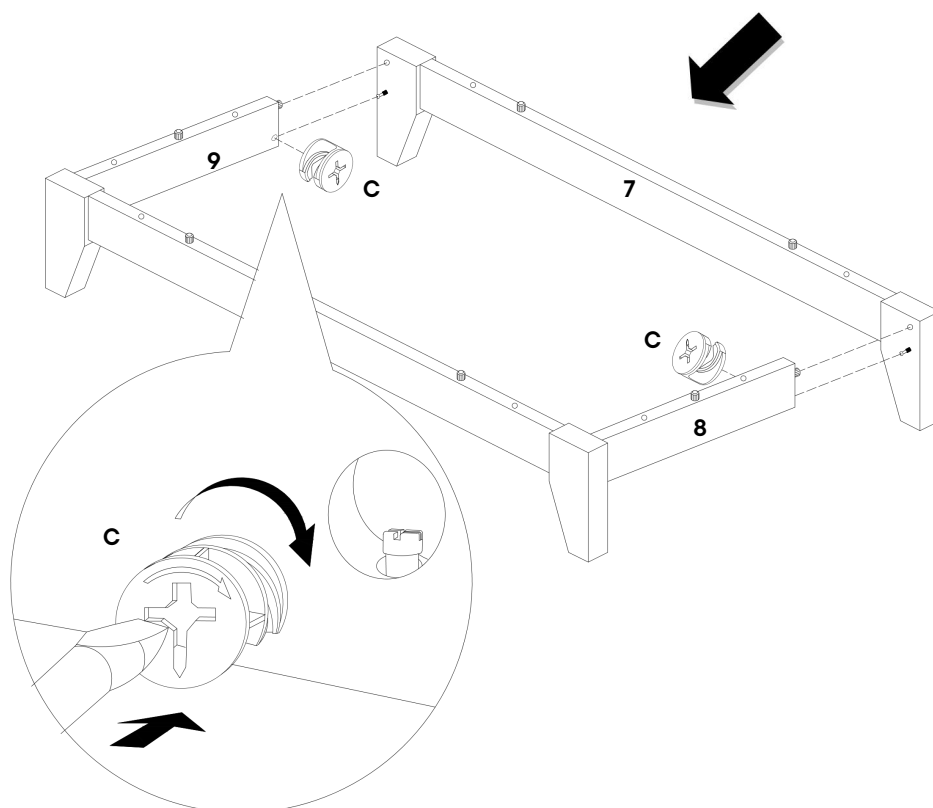
**C** Cam Lock- Ø15 x 12mm x2

## COMPONENTS

**7** Back Leg Panel x1

**8** Right Leg Support x1

**9** Left Leg Support x1



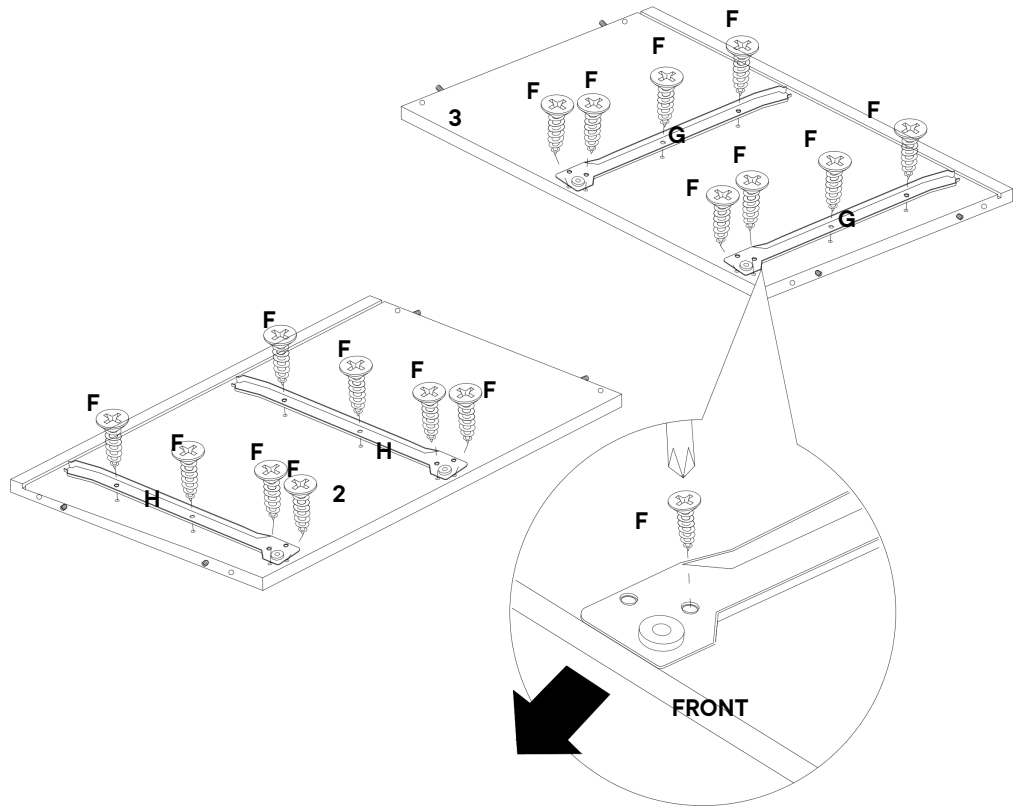
# Step 5

## HARDWARE

- F** C/board Screw Ø3.5 x 16mm x16
- G** C/board Runner Left x2
- H** C/board Runner Right x2

## COMPONENTS

- 2** Right Side Panel x1
- 3** Left Side Panel x1



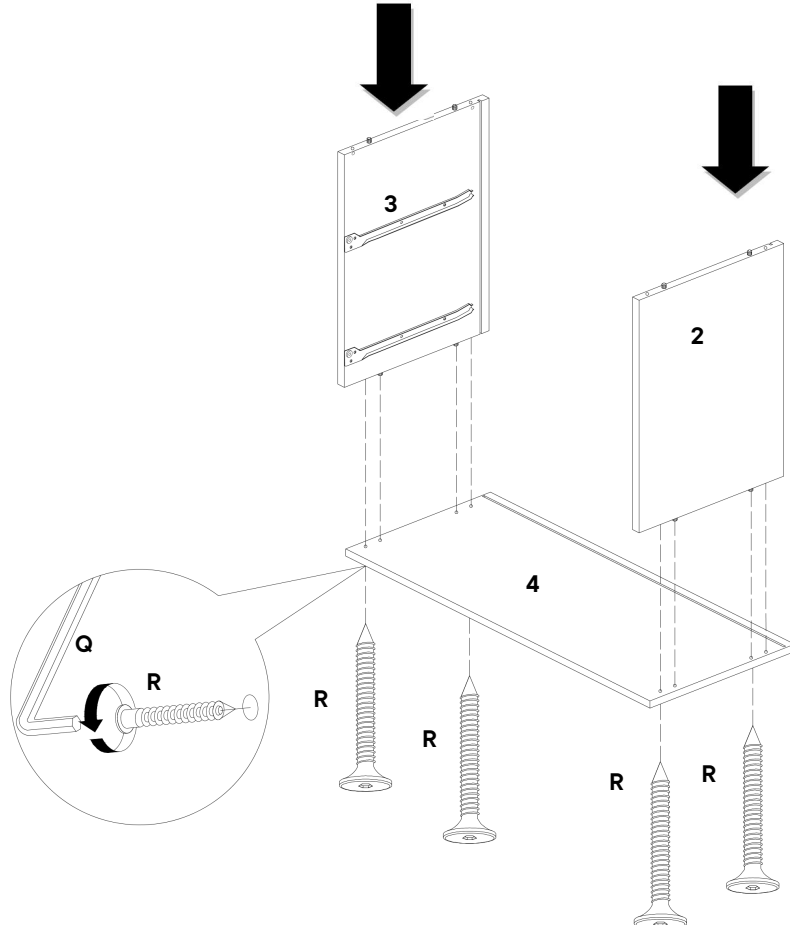
# Step 6

## HARDWARE

- R** JCBCW M6 x 50mm x4
- Q** Allen Key x1

## COMPONENTS

- 2** Right Side Panel x1
- 3** Left Side Panel x1
- 4** Bottom Panel x1



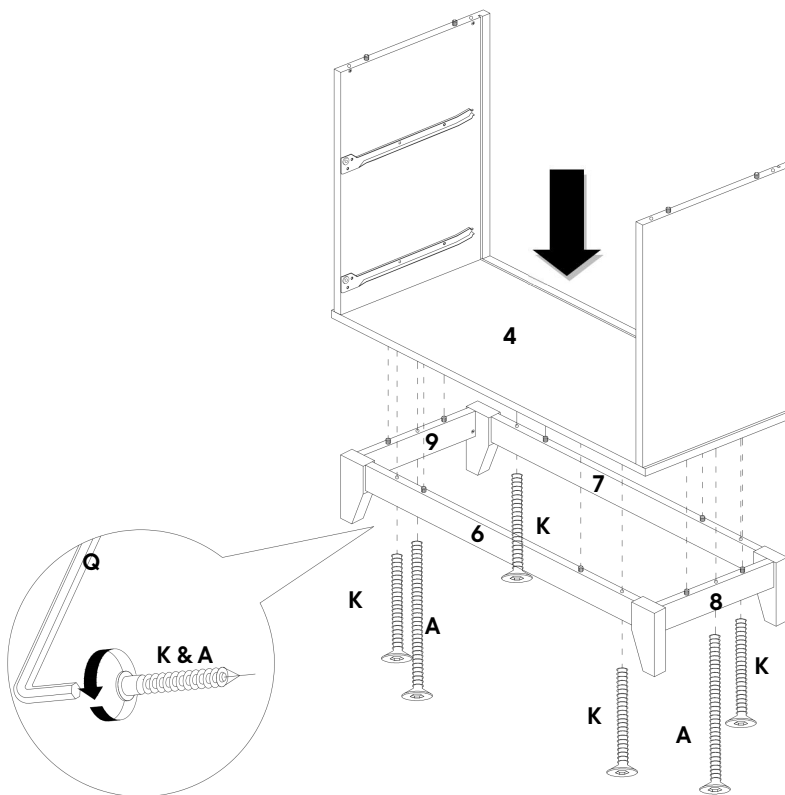
# Step 7

## HARDWARE

- A** JCBC M6 x 80mm x2
- K** JCBC M6 x 60mm x4
- Q** Allen Key x1

## COMPONENTS

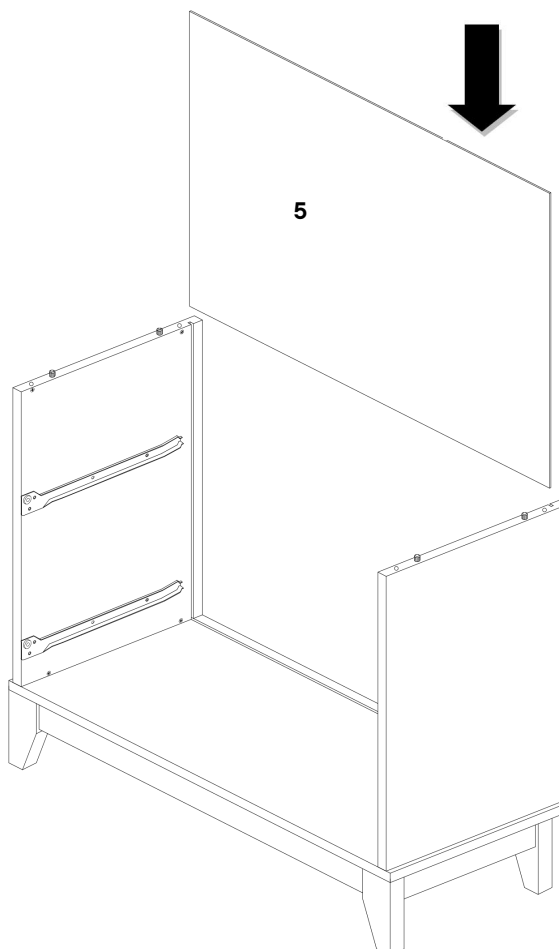
- 4** Bottom Panel x1
- 6** Front Leg Panel x1
- 7** Back Leg Panel x1
- 8** Right Leg Support x1
- 9** Left Leg Support x1



# Step 8

## COMPONENTS

- 5** Back Panel x1



# Step 9

## HARDWARE

**C** Cam Lock- Ø15 x 12mm x4

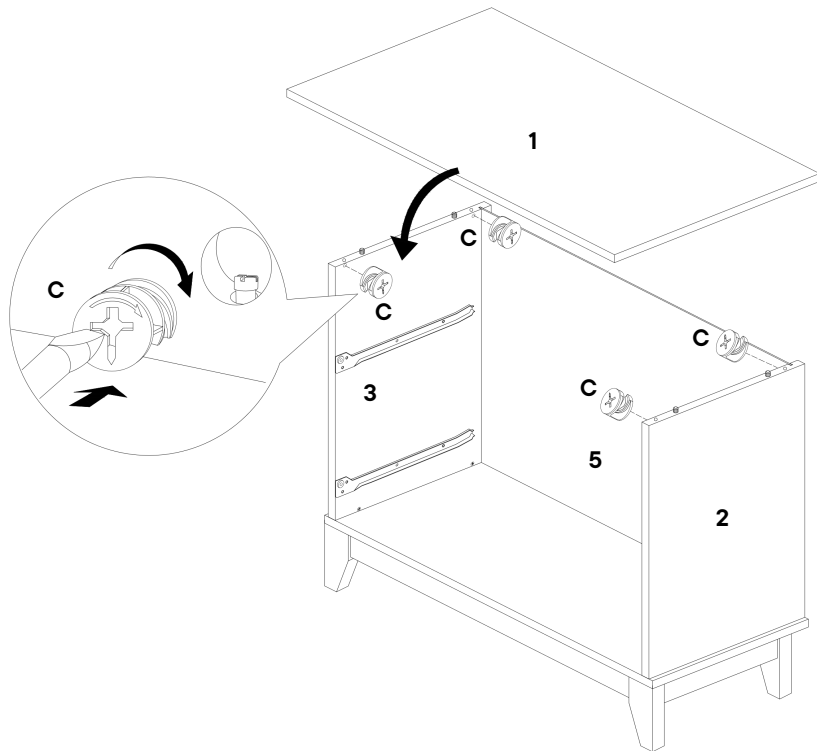
## COMPONENTS

**1** Top Panel x1

**2** Right Side Panel x1

**3** Left Side Panel x1

**5** Back Panel x1



# Step 10

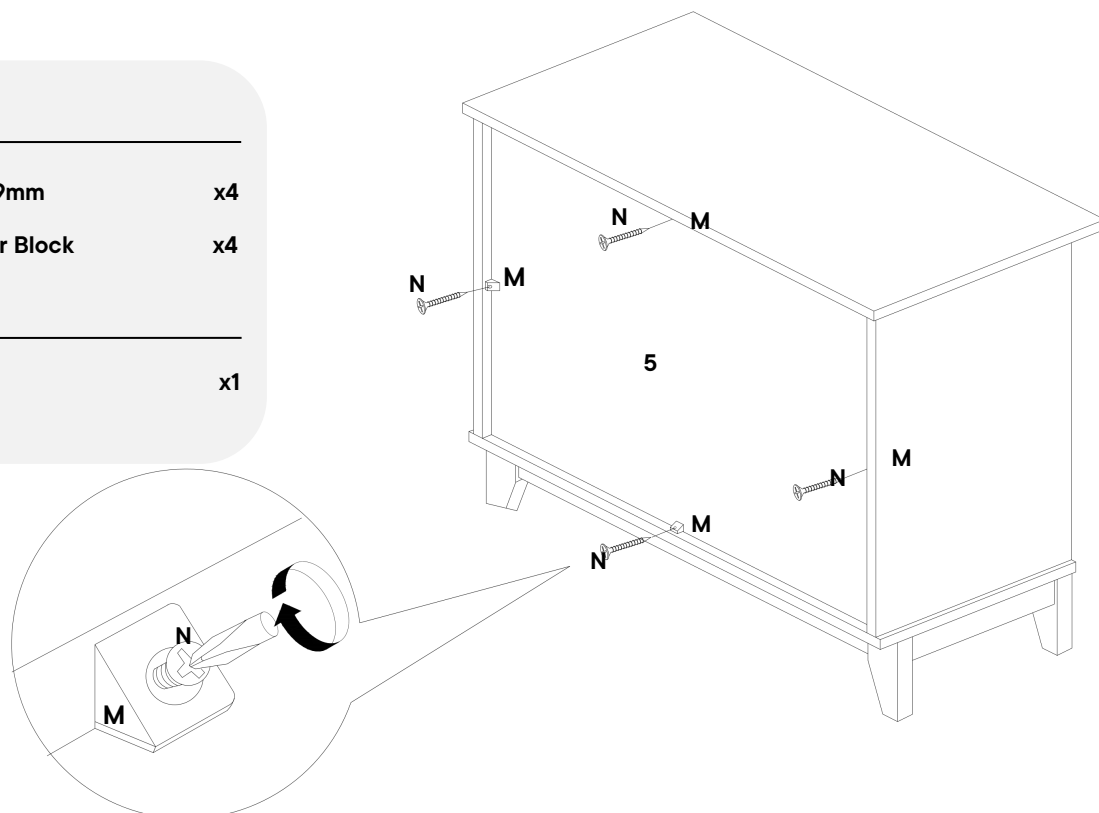
## HARDWARE

**N** Screw Ø4 x 19mm x4

**M** Plastic Corner Block x4

## COMPONENTS

**5** Back Panel x1



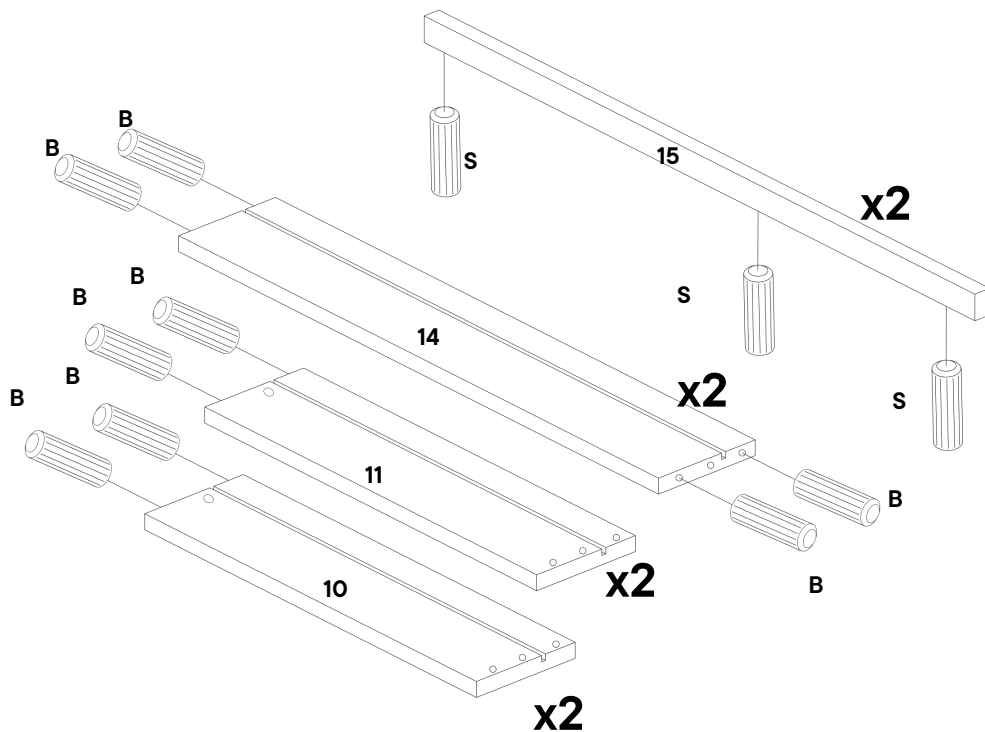
# Step 11

## HARDWARE

- B** Wooden Dowel  $\varnothing 6 \times 30\text{mm}$  x16
- S** Wooden Dowel  $\varnothing 6 \times 25\text{mm}$  x6

## COMPONENTS

- 10** Drawer Right x2
- 11** Drawer Left x2
- 14** Drawer Back x2
- 15** Drawer Handle x2



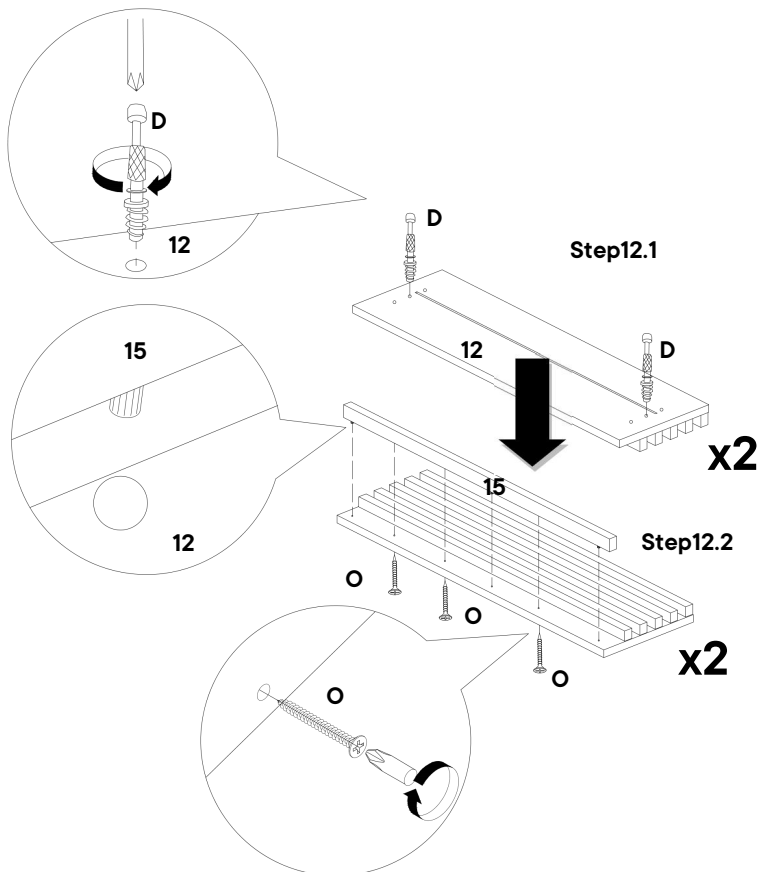
# Step 12

## HARDWARE

- D** Cam Bolt-  $\varnothing 6 \times 32\text{mm}$  x4
- O** C/board Screw  $\varnothing 4 \times 25\text{mm}$  x6

## COMPONENTS

- 12** Drawer Head x2
- 15** Drawer Handle x2



# Step 13

## HARDWARE

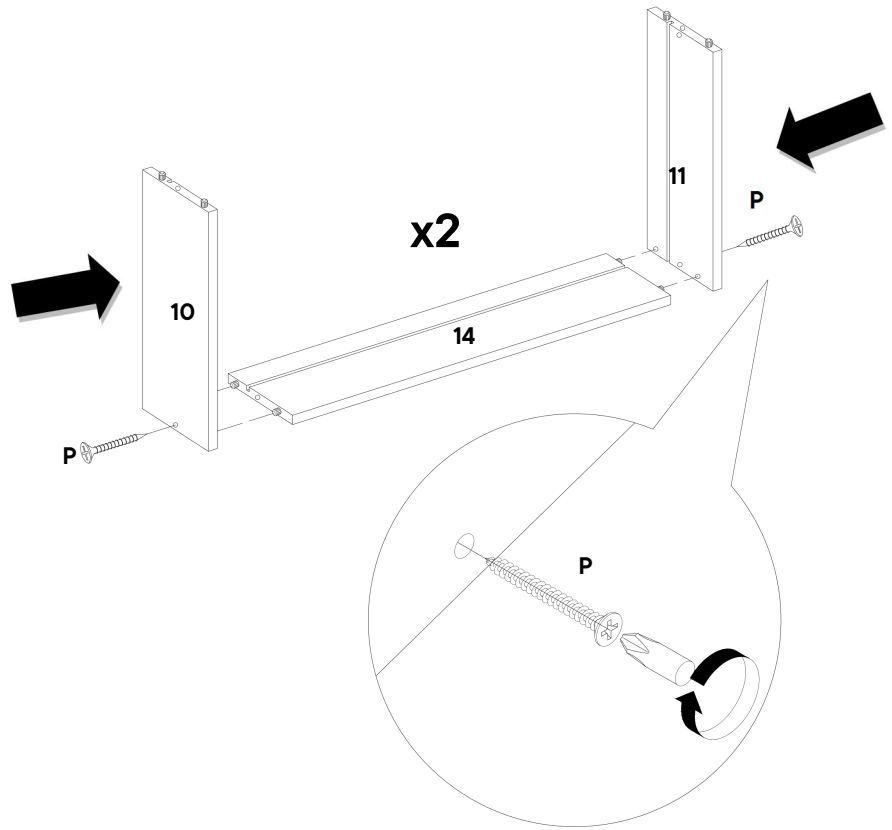
**P** C/board Screw Ø4 x 38mm x4

## COMPONENTS

**10** Drawer Right x2

**11** Drawer Left x2

**14** Drawer Back x2



# Step 14

## HARDWARE

**L** Cam Lock- Ø12 x 9.9mm x4

## COMPONENTS

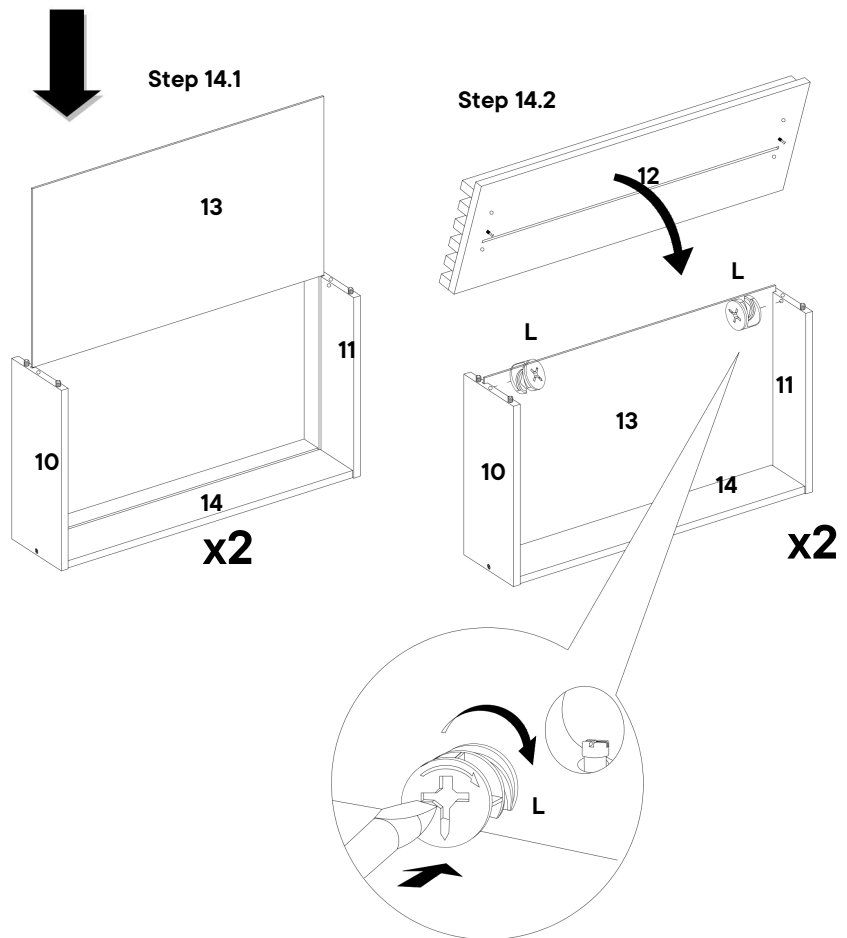
**10** Drawer Right x2

**11** Drawer Left x2

**12** Drawer Head x2

**13** Drawer Base x2

**14** Drawer Back x2



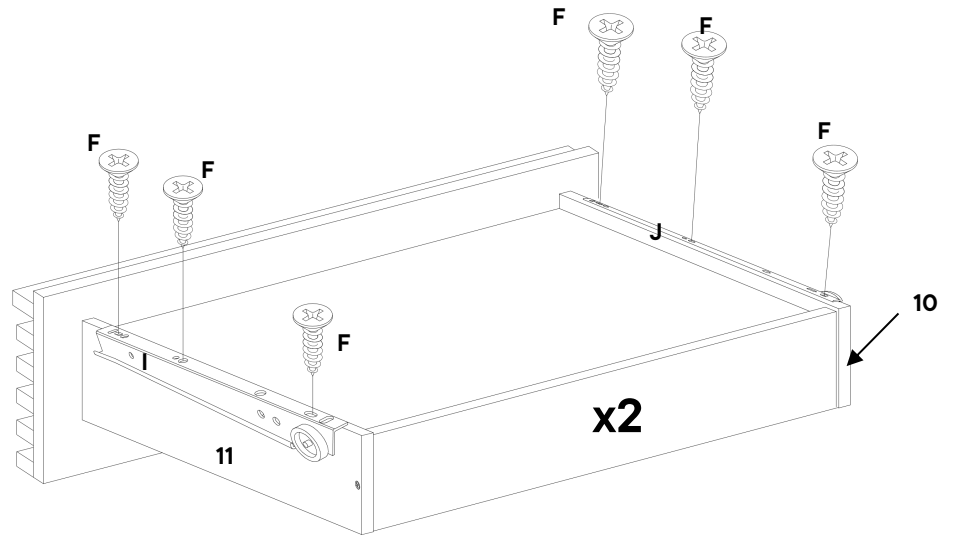
# Step 15

## HARDWARE

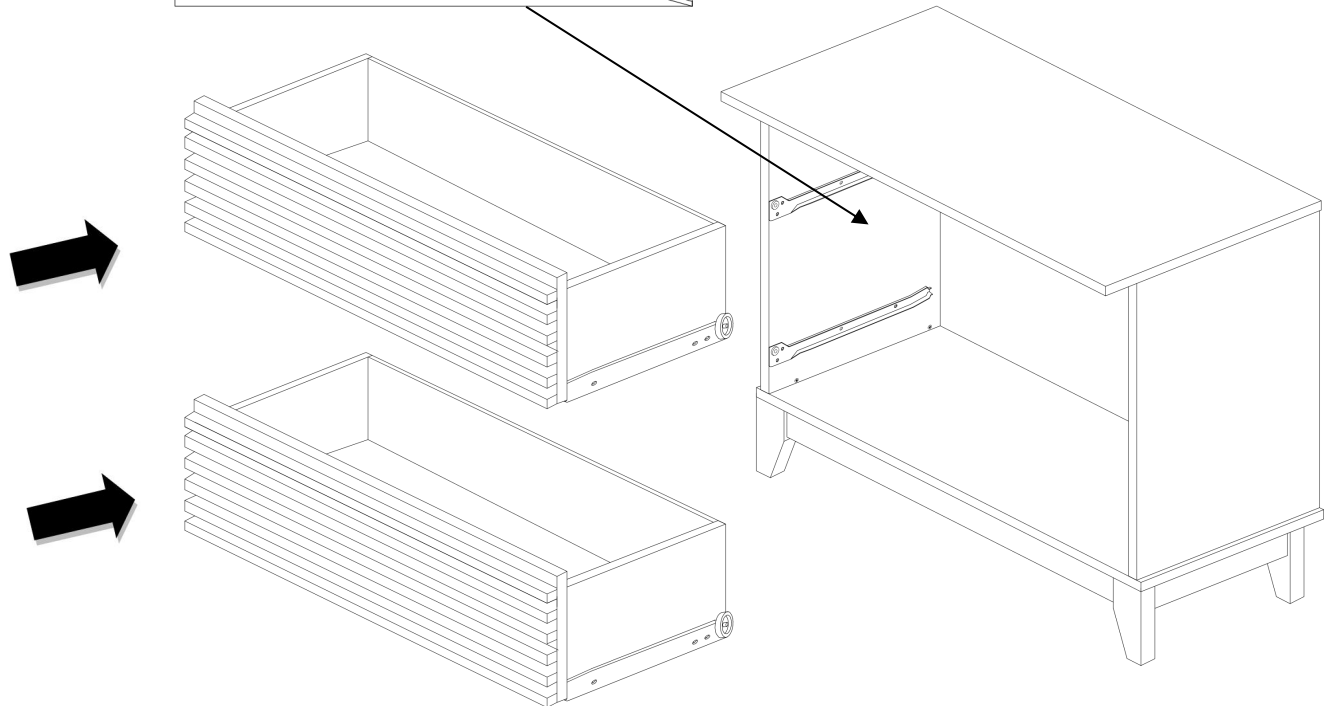
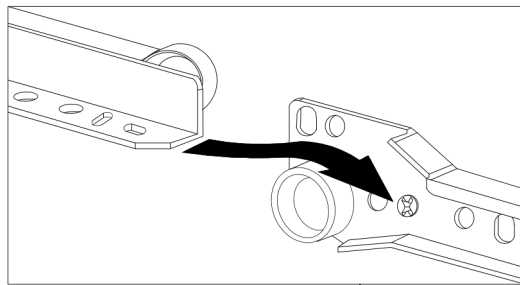
- F** C/board Screw  $\varnothing 3.5 \times 16\text{mm}$  x12
- I** Drawer Runner Left x2
- J** Drawer Runner Right x2

## COMPONENTS

- 10** Drawer Right x2
- 11** Drawer Left x2



# Step 16



# Great job!

Nightstand assembly is complete.

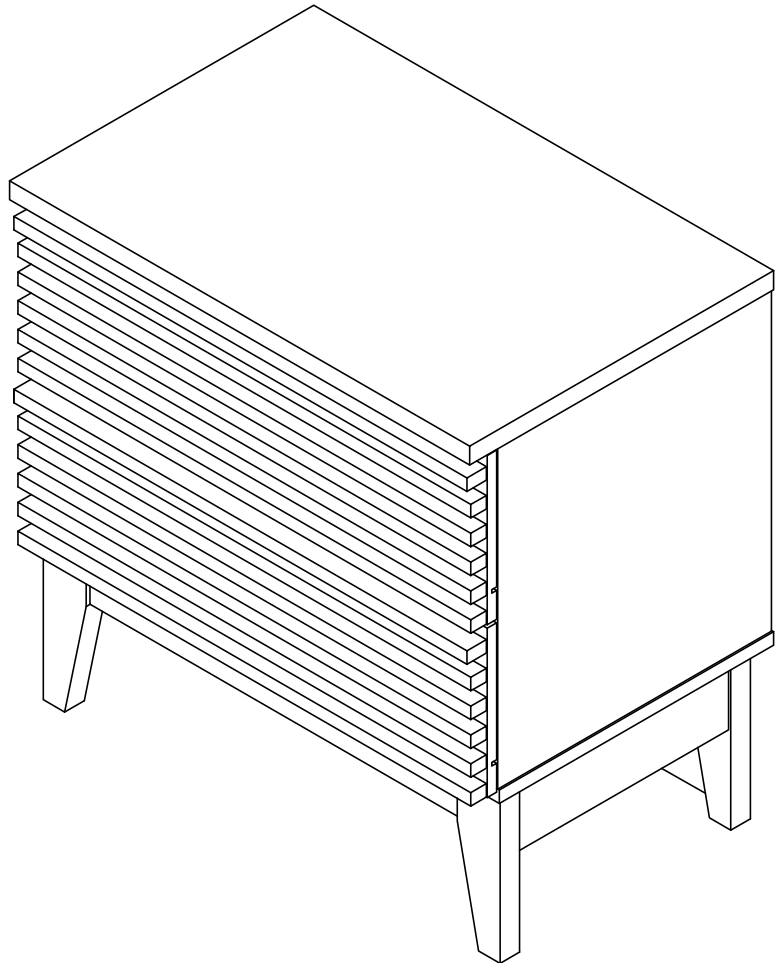
## ♥ CARING FOR YOUR ITEM

Indoor use only.

Not contract grade.

Clean using a non-abrasive cloth and a mild cleaner.

Never use harsh chemicals, as they could damage the finish or integrity of the item.



## CONNECT WITH US!

Tag us **@modway\_furniture** and **#modway** for a chance to be featured.