

Chair



Product Description

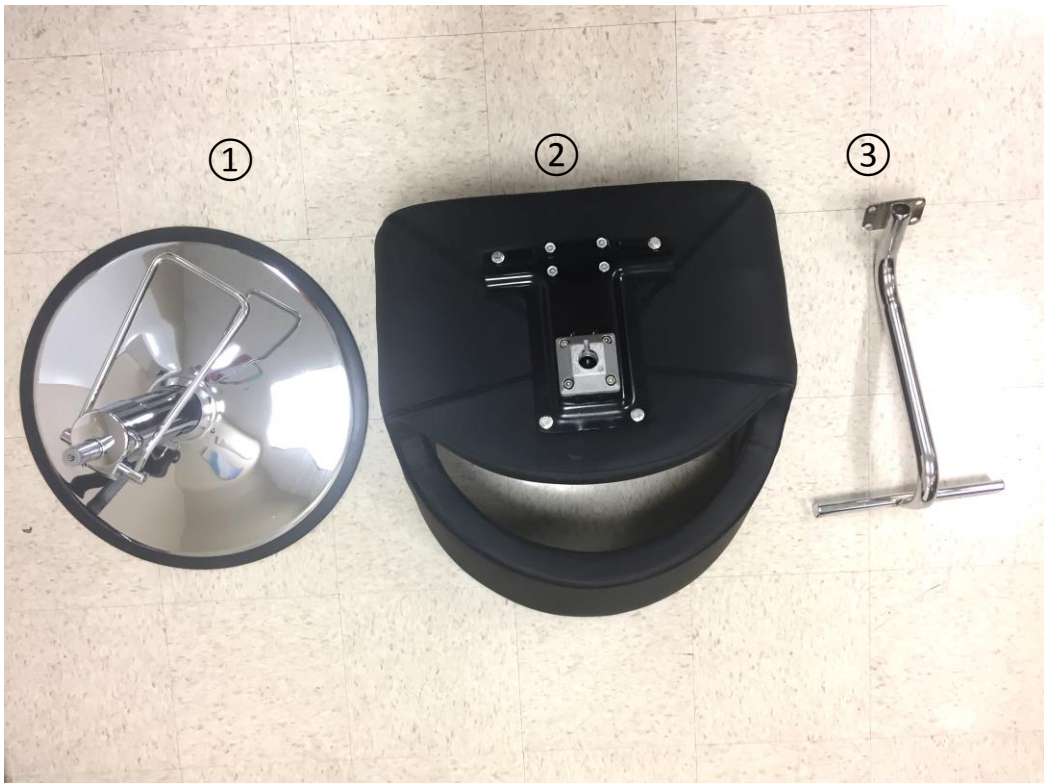
- Upholstered with high-quality soft vinyl
- Finished with a polished chrome base
- Sturdy stainless steel heavy duty pump

Chair Installation Manual

- In this manual, we use Chair as an example to show you how to assemble a chair.
- Most of Chairs can be assembled in the same way.
- This manual is good for:



Product Parts & Installation



- ① 1- Pump and Base
- ② 1- Seat and 4- Screws
- ③ 1- Footrest

You will also need a 9/16 wrench
or an adjustable wrench to install
a styling chair



Step 1: Remove the 4 screws on the seat bracket



Step 2:
Line up the holes on the footrest to the holes on the seat bracket,
and use the 4 screws to attach
the footrest to the bracket





Step 3:

Tighten the screws using a 9/16 wrench or an adjustable wrench

Caution:

Make sure not to tighten the screws until all four screws are inserted into the holes



Step 4:

Place the seat on the top of the pump

Caution:

Make sure to line up the slot on the bracket to the locking pin on the pump

Step 5:

Turn the seat to lock the seat into the pump

Step 5:

Short pump the chair up and down to adjust the height

Caution:

Please don't pedal the lever all the way down, as this makes the pump not work



Congratulations!

You have yourself a

Chair!



Chair Troubleshooting

- **Problem:** The hydraulic pump doesn't work well, for example, it's stuck at the very highest level and doesn't go down.
- **Tip:** This is because excess air comes into the pump. In this case, please pump up and down your salon chair the full range 3-4 times. This will clear any air within the hydraulic oils and freshly coat all your seals.