



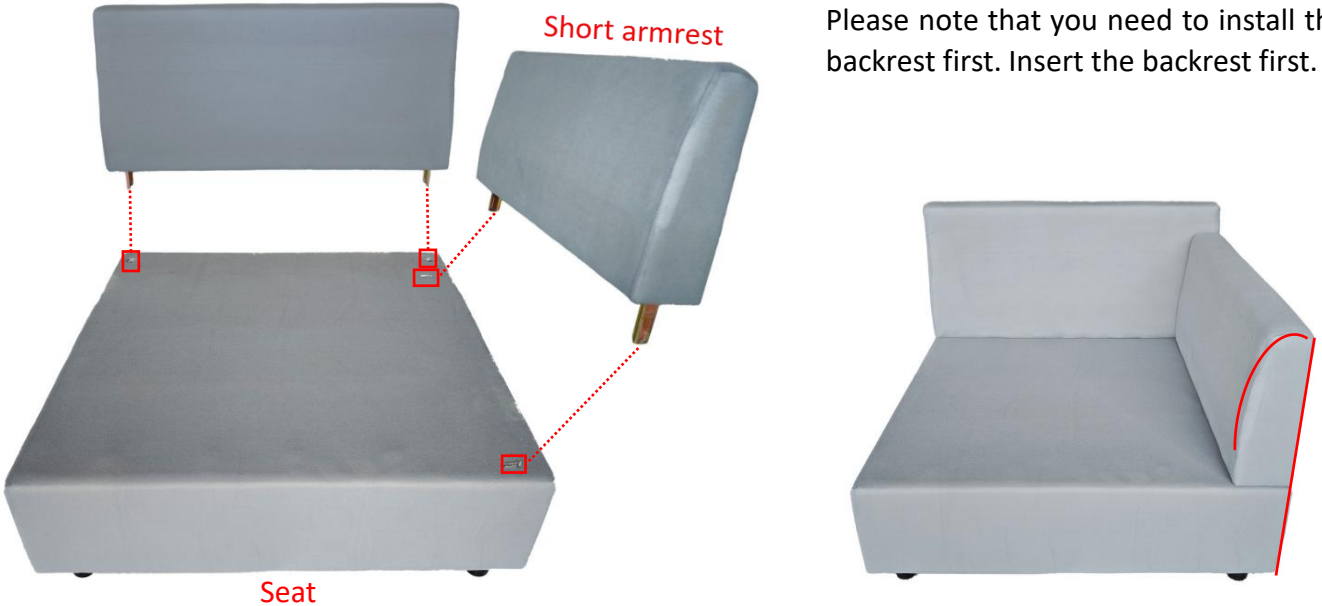
4

Long backrest

Short armrest

Seat

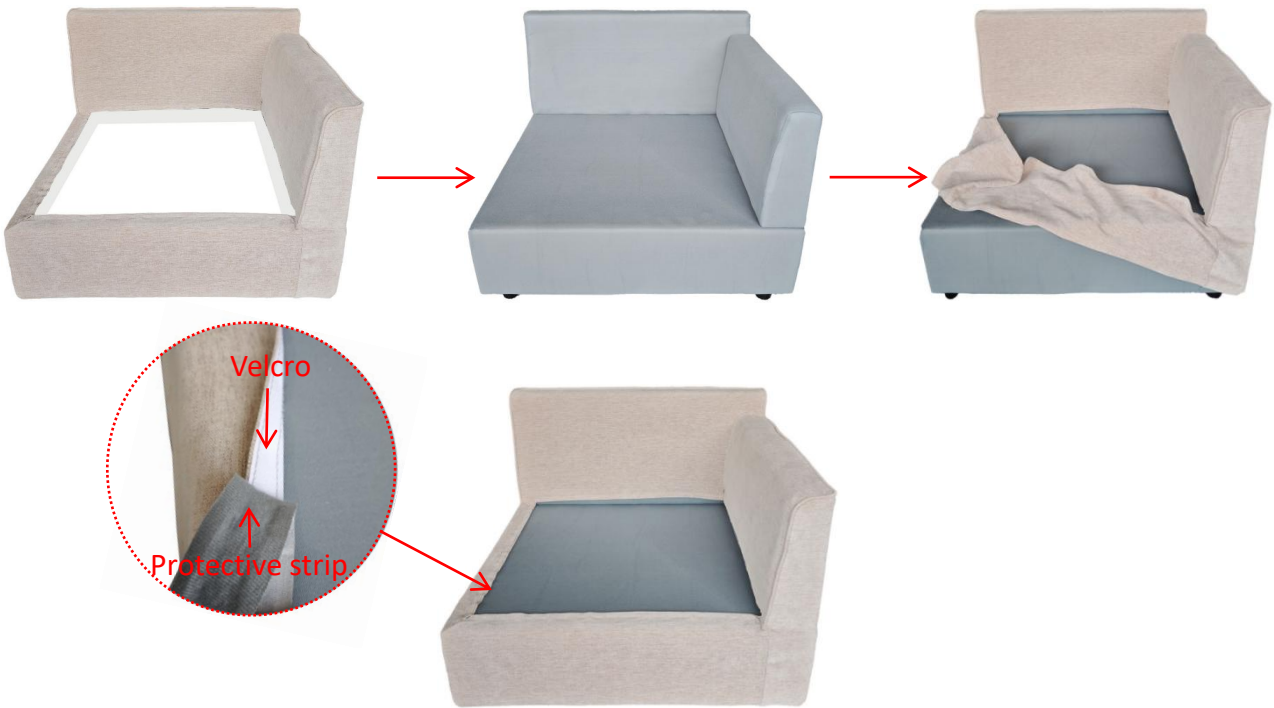
Please note that you need to install the backrest first. Insert the backrest first.



5

Put on the sofa cover.

Suggestion: you'd better not remove the protective strip before finish putting the cover on.

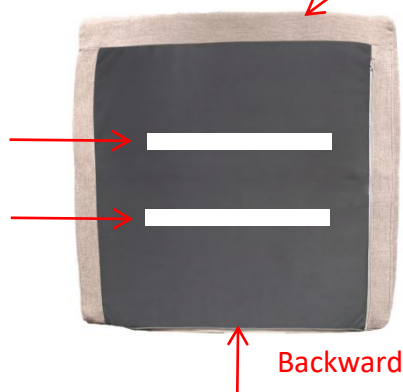


6

Place the seat cushion and back cushion.

Ahead

The seat cushion can be attached using Velcro.



Backward

Note: The side of the grey magic cloth that is flush with the edge of the seat cushion should be facing backward.

