

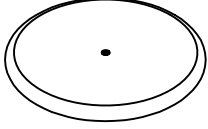
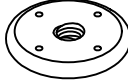
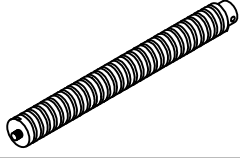
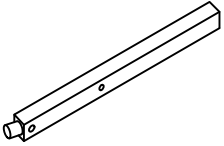
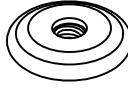

ASSEMBLY INSTRUCTIONS

18-24" SOLID RUBBER WOOD ADJUSTABLE STOOL.







ASSEMBLE ON A FLAT, PROTECTED SURFACE.

PHILLIPS HEAD SCREWDRIVER NEEDED FOR ASSEMBLY; NOT PROVIDED.

PARTS LIST

No.	DESCRIPTION	FIGURE	QTY
A	SEAT		1
B	TOP DISC		1
C	CENTER THREAD BAR		1
D	LEGS		3
E	MIDDLE DISC		1
F	BOTTOM DISC		1

HARDWARE LIST

No.	DESCRIPTION	FIGURE	QTY
1	BOLT- 1/4" x 38MM		3
2	WOOD DOWEL- Ø10 x 30MM		1
3	SCREW- Ø4 x 25MM		4
4	SCREW- Ø4 x 38MM		3
5	(58x23x4MM) ALLEN KEY		1
6	GLUE		1

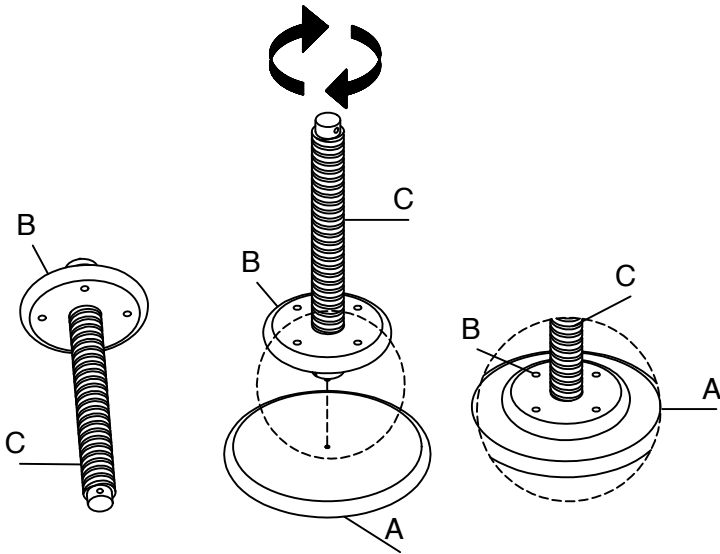
ASSEMBLY INSTRUCTIONS

18-24" SOLID RUBBER WOOD ADJUSTABLE STOOL.

ASSEMBLE ON A FLAT, PROTECTED SURFACE.
 PHILLIPS HEAD SCREWDRIVER NEEDED FOR ASSEMBLY; NOT PROVIDED.

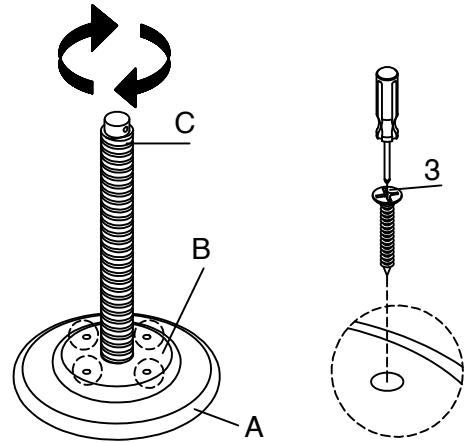
STEP 1:

PUT THROUGH TOP DISC (B) INTO CENTER THREAD BAR (C) PER DRAWING SHOWN ON THE BELOW LEFT. UPSIDE DOWN (B) & (C) AND TIGHTEN THE CENTER THREAD BAR (C) TO THE SEAT (A) PER DRAWING SHOWN ON THE BELOW MIDDLE. TURN TOP DISC TO CLOSELY ATTACH TO SEAT (A) PER DRAWING SHOWN ON THE BELOW RIGHT.



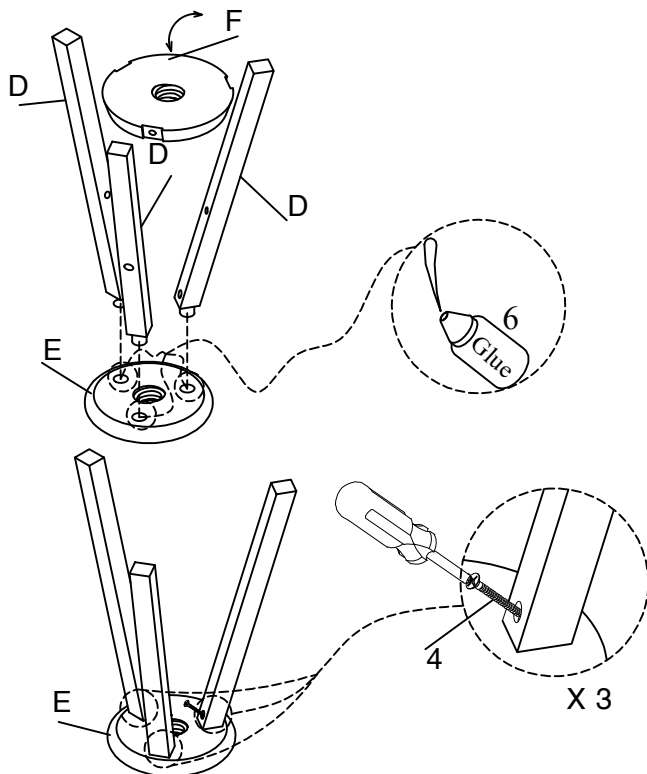
STEP 2:

MAKE SURE CENTER THREAD BAR (C) TO IS FULLY TIGHTEN TO SEAT (A). TURN TOP DISC (B) TO CLOSELY ATTACH TO SEAT (A). INSERT SCREWS (3) INTO TOP DISC (B) AND TIGHTEN WITH PHILLIPS HEAD SCREWDRIVER (NOT PROVIDED) PER DRAWING SHOWN.



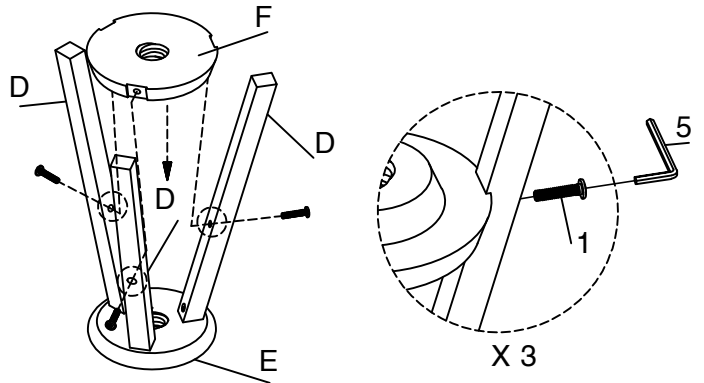
STEP 3:

APPLY WOOD GLUE (6) TO PEGS ON LEGS (D) AND INSERT INTO MIDDLE DISC (E) PRE-DRILLED LEG HOLES. USE BOTTOM DISC (F) TO TURN EACH LEG (D) SO THAT THE FLAT SIDE OF EACH LEG WITH BOLTHOLE IS ALIGNED WITH THE NOTCHES IN BOTTOM DISC (F). INSERT AND TIGHTEN SCREWS (3) WITH A PHILLIPS HEAD SCREWDRIVER (NOT PROVIDED)



STEP 4:

ALIGN BOTTOM DISC (F) NOTCHES WELL TO EACH LEG (D) BOLT HOLES PER DRAWING SHOWN BELOW. INSERT BOLTS (1) INTO BOLTS HOLES AND TIGHTEN WITH ALLEN KEY (5)



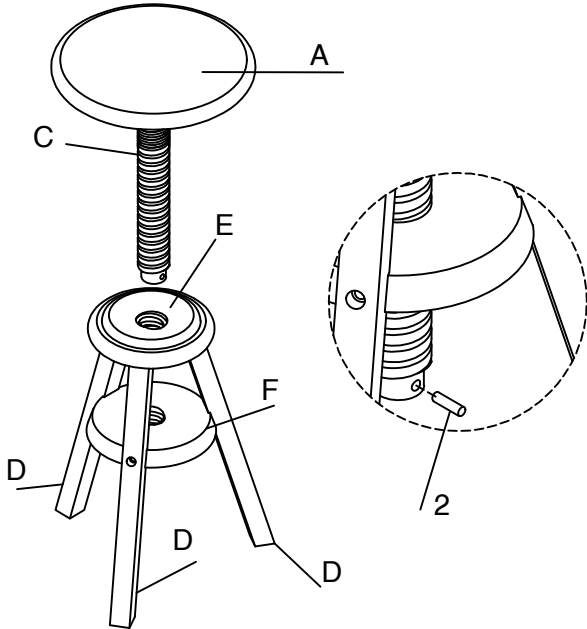
ASSEMBLY INSTRUCTIONS

18-24" SOLID RUBBER WOOD ADJUSTABLE STOOL.

ASSEMBLE ON A FLAT, PROTECTED SURFACE.
PHILLIPS HEAD SCREWDRIVER NEEDED FOR ASSEMBLY; NOT PROVIDED.

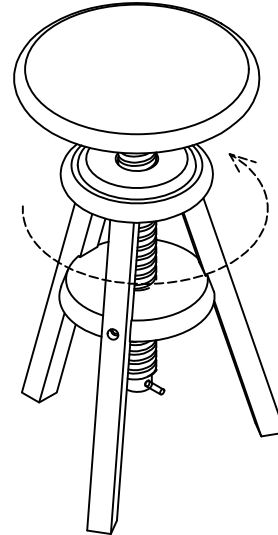
STEP 5:

INSERT SEAT (A) WITH CENTER THREAD BAR (C) ASSEMBLED FROM STEP 2 INTO MIDDLE DISC (E) AND BOTTOM DISC (F). INSERT WOOD DOWEL (2) INTO THE BOTTOM OF THE CENTER THREAD BAR (C) PER DRAWING SHOWN BELOW ON THE RIGHT.



STEP 6:

TURN THE SEAT TO ADJUST THE SEAT HEIGHT PER DESIRED. MAXIMUM HEIGHT OF THE STOOL SHOULD BE 23.5" H



IMPORTANT NOTES:

- PLACE ALL WOODEN PARTS ON A CLEAN AND SMOOTH SURFACE TO AVOID SCRATCHING.
- KINDLY FOLLOW THE ASSEMBLY INSTRUCTION STEP BY STEP.
- WE RECOMMEND THAT YOU PERIODICALLY TIGHTEN ALL BOLTS/SCREWS. PLEASE MAKE SURE ALL BOLTS/SCREWS ARE PLACED IN THEIR PROPER POSITION AND ARE TIGHTENED SECURELY TO ENSURE YOUR SAFETY.
- WEIGHT RESTRICTION: TOP: 175 LBS.
- DO NOT STAND OR CLIMB ON THE STOOL.
- NOT FOR COMMERCIAL USE.

* In case you need any extra parts, please feel free to contact us directly instead of returning your order, we will be
y.