

VEVOR

Affordable. Reliable. Home Improvement.

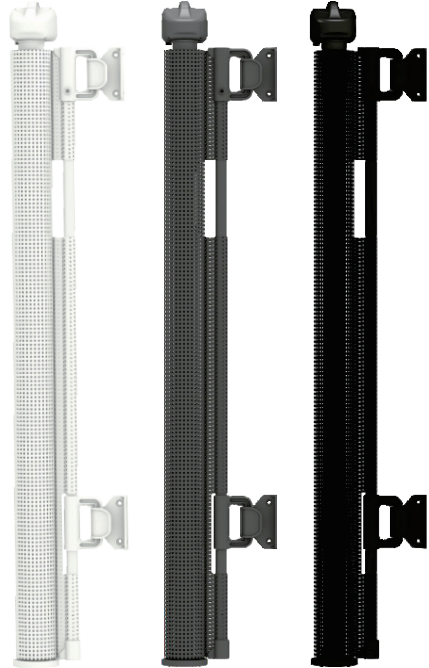
RETRACTABLE SAFETY GATE

VEVOR

Affordable. Reliable. Home Improvement.

RETRACTABLE SAFETY GATE

Model:SH20.006D04B-140
SH20.006D04B-180
SH20.006D04B-140T
SH20.006D04B-180T



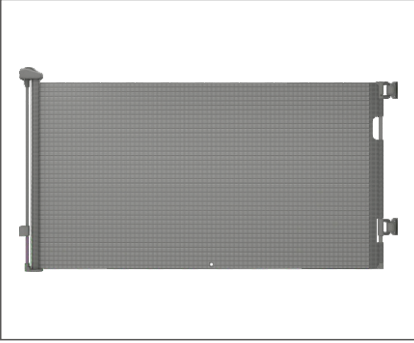
IMPORTANT! READ AND FOLLOW THESE INSTRUCTIONS CAREFULLY AND KEEP FOR FUTURE REFERENCE.

This is the original instruction, please read all manual instructions carefully before operating. VEVOR reserves a clear interpretation of our user manual. The appearance of the product shall be subject to the product you received. Please forgive us that we won't inform you again if there are any technology or software updates on our product.

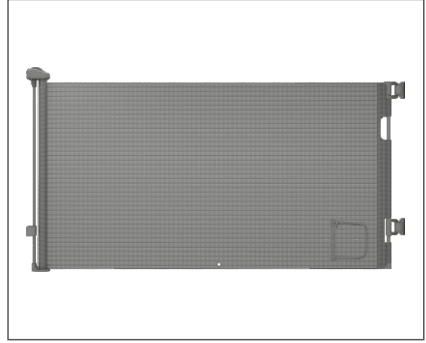
• PRODUCT STYLES

Regular Style

Style 1 : Standard Style

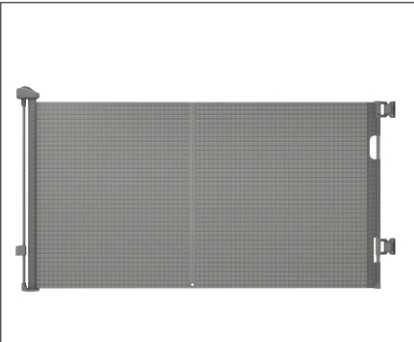


Style 2 : Safety gate with cat hole

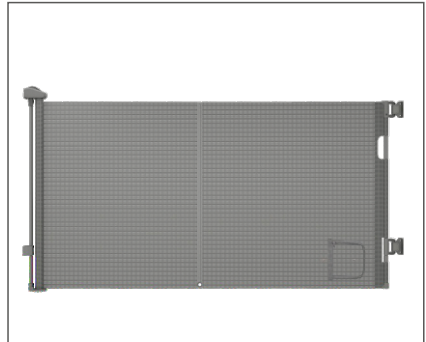


Reinforced Version

Style 3: Safety gate with strips



Style 4: Safety gate with strips and cat hole



PS. This manual takes the standard style as an example to explain the installation steps. The installation steps for other styles are the same. The actual product received shall prevail.

WARNINGS

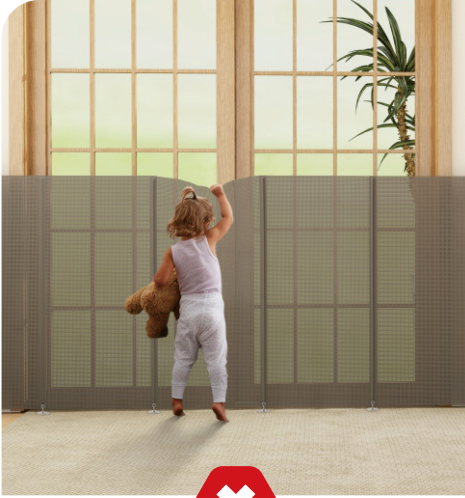
- To prevent serious injury or death, securely install gate and use according to manufacturer's instructions.
- Incorrect installation can be **DANGEROUS**.
- **DANGER** to older children if climbing over the product.
- **DO NOT** use the safety gate if any components are damaged or missing.
- The safety gate must not be fitted across windows.
- **NEVER** use to keep child away from pool.
- This safety gate is for domestic use only.
- This safety gate has a manual closing system.
- **NEVER LEAVE** the child unattended when using this product.
- Children have died or been seriously injured when gates are not securely installed.
- **DO NOT** put any goods which can be grabbed by children or pets near this product to prevent injury.
- Before using this product, carefully inspect for any loose parts and whether any parts need to be tightened.
- This product is intended for use with children from 6 to 24 months or small to medium pets from 4.5kg(10 lbs) up to 18kg (40 lbs).
- **ALWAYS** check that safety gate is correctly closed.
- To use this gate for children, you must use all floor hooks to holes at bottom of mesh, this floor hooks are not suitable for using on rough surface such as carpets and for rough surface such as carpets, please do not use this gate.

- Gate must be installed as close to the ground as possible, as per the installation guides.
 - **NEVER** use with a child able to climb over or dislodge/open the gate.
 - **STOP USING** when a child can climb over or dislodge the gate.
 - Install with this side away from child.
 - Regularly check that the safety gate is properly installed and secure.
 - **ALWAYS** install and use as directed using all parts. Any additional or replacement parts should be obtained from after sales support.
 - Gate must be fitted between rigid surfaces such as plaster board, timber or hard wall.
 - You **MUST** install wall cups to keep the gate in place. Without wall cups, child can push out and escape.
 - The minimum width of the opening is 27.6in, Size: 55/71in, Max opening: 55/71in, the best width of opening is 35.4in.
 - This product is a deterrent and not a substitute for adult supervision.
- NEVER LEAVE** children unattended. Check the gate regularly to ensure safe usage.

NOTE

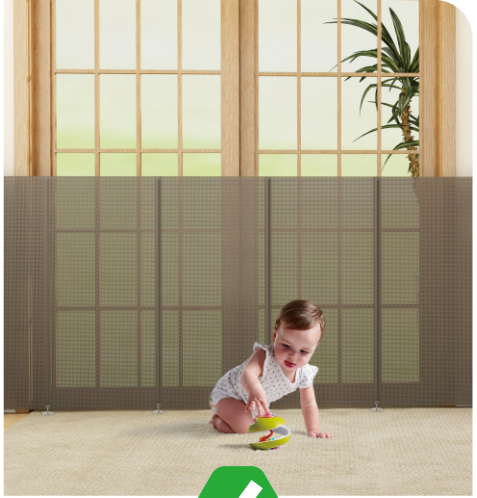
STOP using when the baby is higher than the gate.

This gate is suitable for use with children from 6 months up to 24 months of age.



DO NOT ALLOW

Baby to climb up
to the top of the gate



ALLOW TO USE

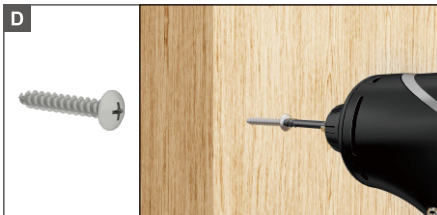
Baby can't climb up
to the top of the gate

• WHAT'S IN THE BOX



• INSTALLATION WALLS

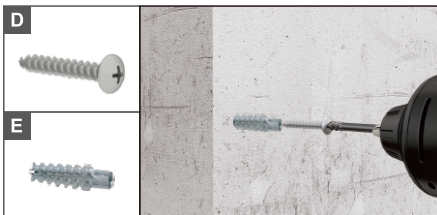
- For installation accessories D



For example: wood mounting

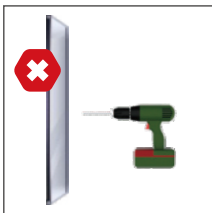
Drill 5/64" (2mm) pilot holes and use the wood screws provided screwing directly into the wood.

- For installation accessories D and E



For example: hard wall mounting concrete

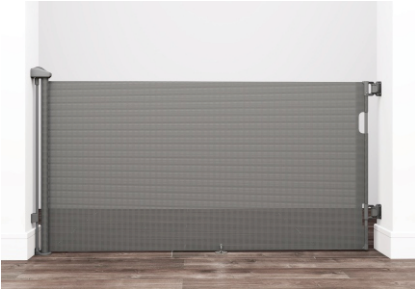
Drill 15/64" (6mm) pilot holes and about 50mm deep, insert anchor and secure with screws.



NEVER install this product on glass doors.
Install this product against reliable doors or walls.

● INSTALLATION LOCATIONS

Installation inside
opening or doorway



Installation outside
opening or doorway



Without Baseboard

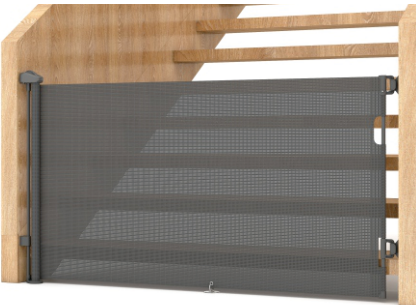


With Baseboard



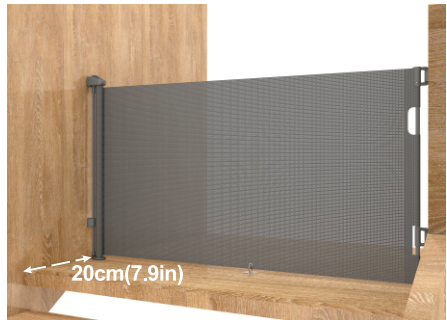
Installation on stairs

Bottom of stairs



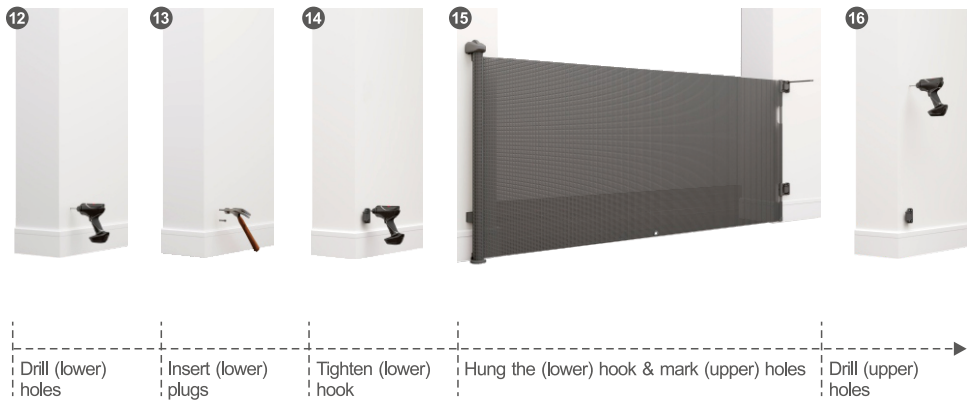
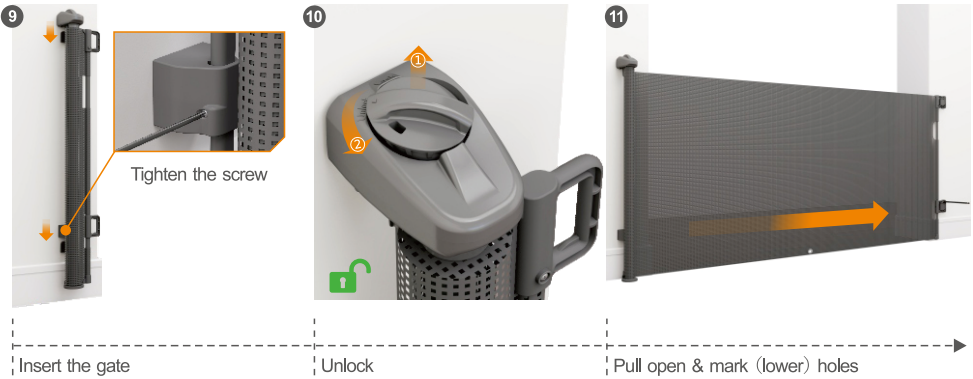
If the safety gate is used at the bottom of the stairs, it should be positioned at the front of the lowest tread possible.

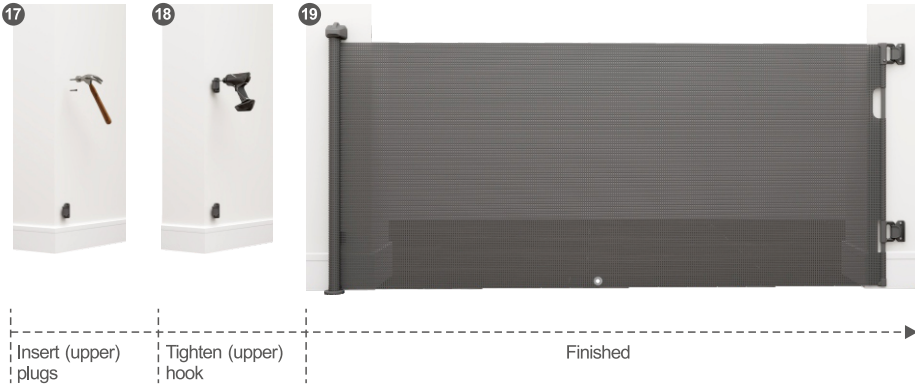
Top of stairs



If the gate is used at the top of stairs to prevent the child from falling down stairs, it **MUST** be placed 7.9in (20cm) behind the top step.

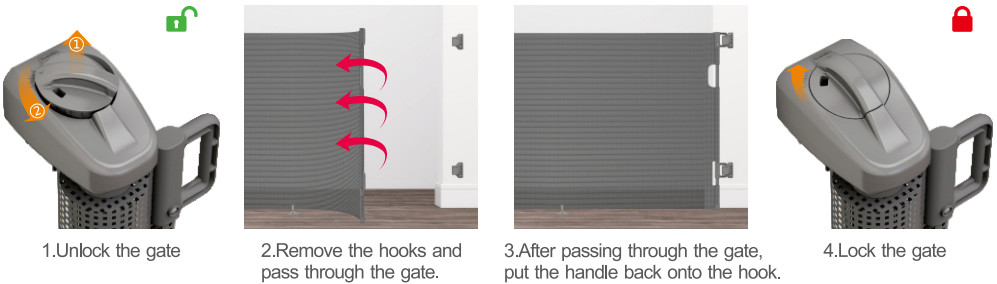
● INSTALLATION STEPS





● OPERATION

⚠ Use only with the locking / latching mechanism securely engaged.



Note: When gate is retracting always hold the handle and guide the gate evenly back into its original position. Never let go of handle when gate is retracting.

PS: If no need the gate again, you need to remove the floor hook from the safety gate mesh.

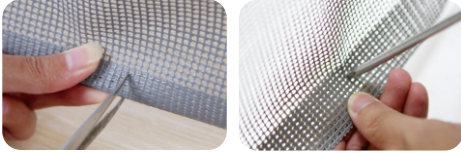
● CLEANING & MAINTENANCE

- 1.Wipe the gate with a clean, damp cloth and air dry it after cleaning.
- 2.Do not use chemical or abrasive cleaners.
- 3.Regularly check that the gate is functional.
- 4.Inspect all components regularly and stop using the gate if any component is damaged or missing.

● FLOOR HOOKS



1. Check all parts listed and prepare scissors and towels before installation.



2. Cut or drill 0.35in hole on the double-layer mesh.



3. Attach the ring to the mesh hole tightly.



Note: Check the top and bottom covers are tightly closed.

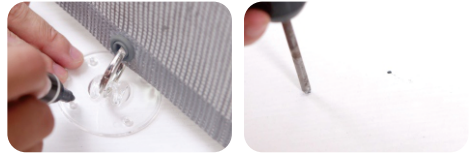
⚠ Please ignore the 3 steps above and start directly from Step 4 if you find that the product already comes with holes.

⚠ To use this gate for children, you must use all floor hooks to holes at bottom of mesh, this floor hooks are not suitable for using on rough surface such as carpets and for rough surface such as carpets, please do not use this gate.



4. Put the metal ring over the hole.

Method No.1 Punch



5. Mark and drill 2 holes on the cloth clip.



6. Insert plugs and tighten the cloth clip to the ground.



7. Finished

Method No.2 Punch-Free



5. Cleaning the floor and stick the sticker onto the part.



6. Stick another side of sticker onto the ground.



7. Finished

