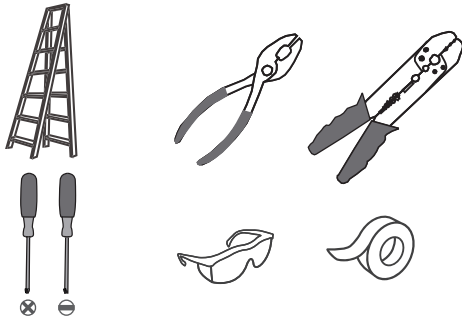
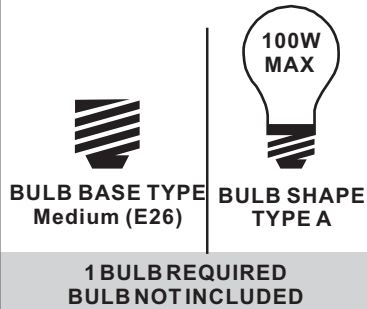


# Installation Guide

## Tools Required



## Light Source



## Fixture Height Adjustable 13.25" to 49.25"

### ⚠ Warnings and Cautions

Turn off the electricity at the circuit breaker before installation. Consult a licensed electrician if in doubt about installation.

Turn off power to the fixture and allow the bulbs to cool before replacing.

## Package Contents

**Preparation:** Identify and inspect all parts before beginning the installation.

Missing or damaged parts? Contact your original place of purchase.

### PARTS BAG



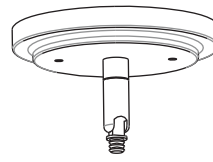
A Crossbar Assembly x 1



B Outlet Box Screw x 2



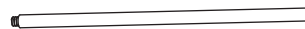
C Wire Connector x 3



D Ceiling Canopy x 1



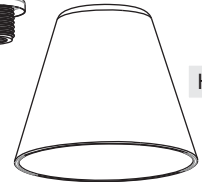
E 6" L Rod x 2



F 12" L Rod x 2



G Socket Assembly x 1



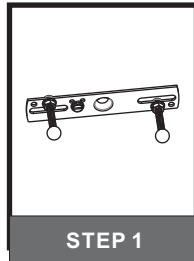
H Shade x 1



I Socket Collar x 1

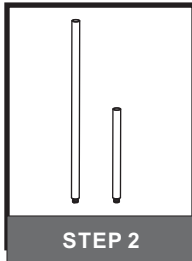
## Table of Contents

### Crossbar Assembly



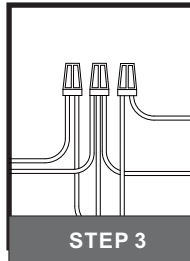
STEP 1

### Downrod



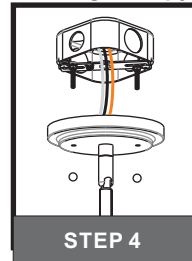
STEP 2

### Wiring



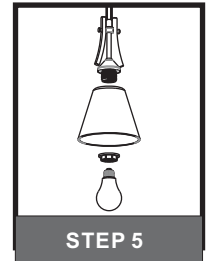
STEP 3

### Ceiling Canopy



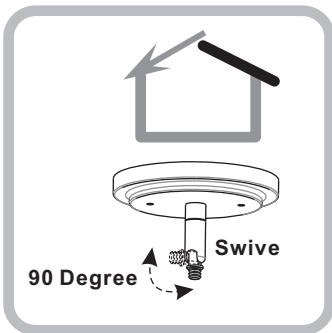
STEP 4

### Shade & Bulb



STEP 5

## STEP 1



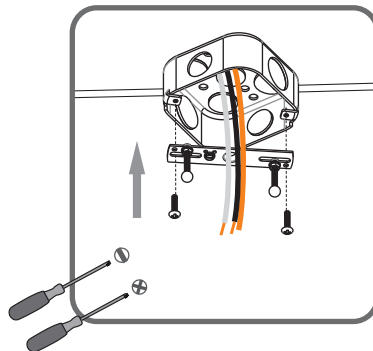
90 Degree

Swive

For angled ceilings, Swivel opening towards wall.

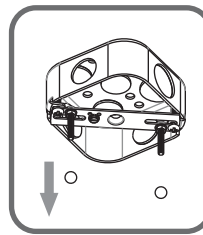
1

Step 1  
Install crossbar assembly

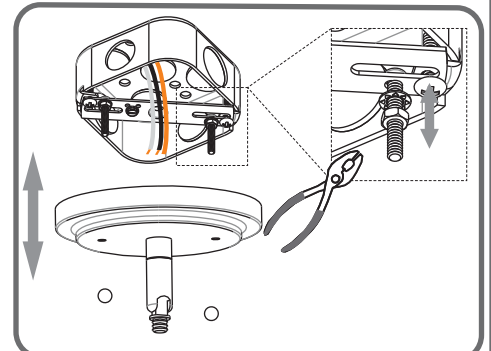


2

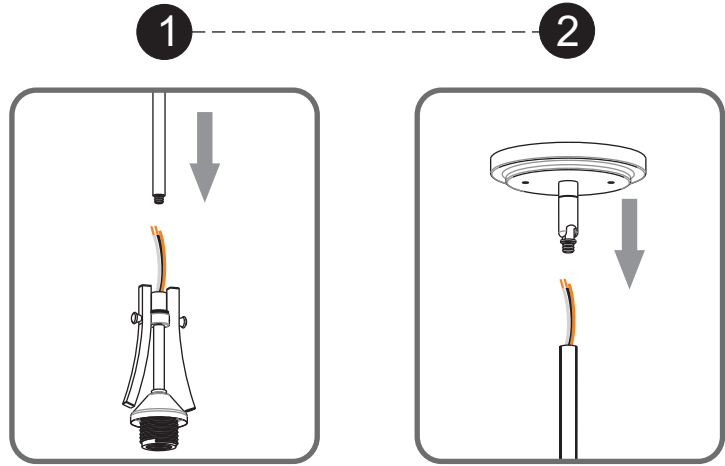
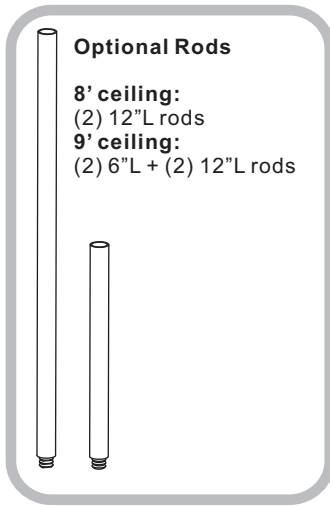
Step 2 - 3  
Test fitting ceiling canopy to mounting screws



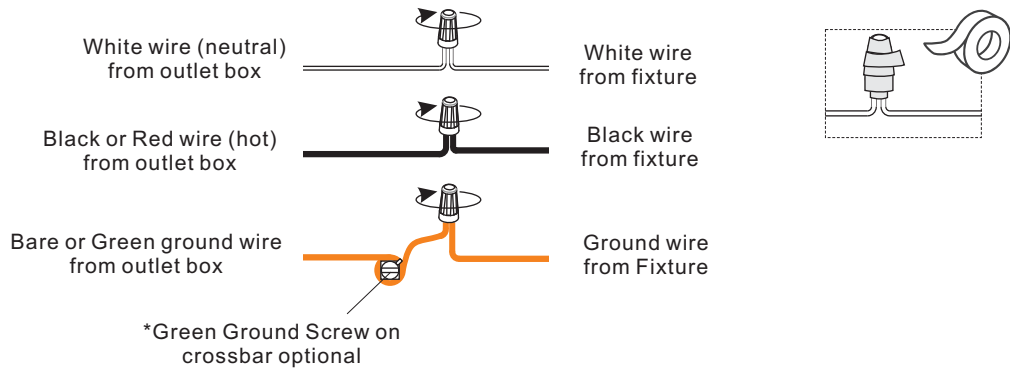
3



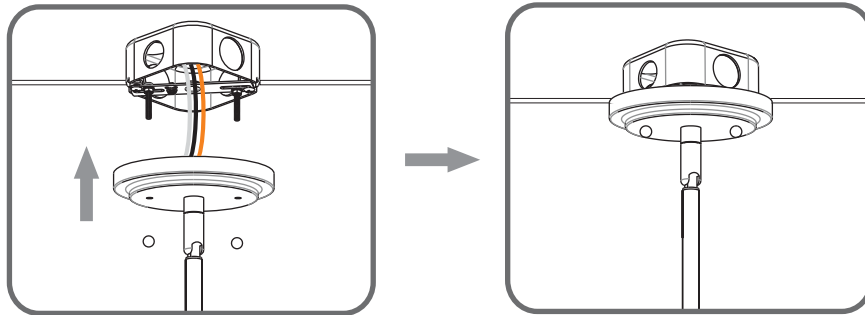
## STEP 2



## STEP 3



## STEP 4



## STEP 5

