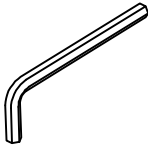


WARNING

- Inspect the sofa bed before each use, make sure all components and parts are correctly and securely positioned.
- Do not use it if any worn, defective, or missing parts.
- Do not sudden sitting or bouncing on the sofa bed.
- Do not jump onto or off the sofa bed.
- Do not use the sofa bed unless placed at a stable position.
- When you clean the sofa bed, please use a leather cleaner.
- Suggested tools: electronic screwdriver

Components/QTY

① Screw wrench(1pc)



Components/QTY

② Screw (8pcs)

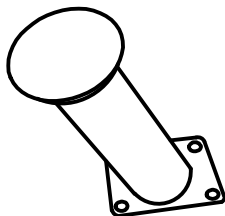


Components/QTY

③ Mat (8pcs)



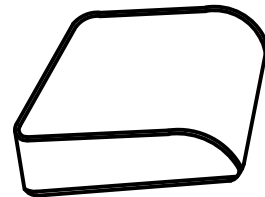
④ Front sofa leg(2pcs)



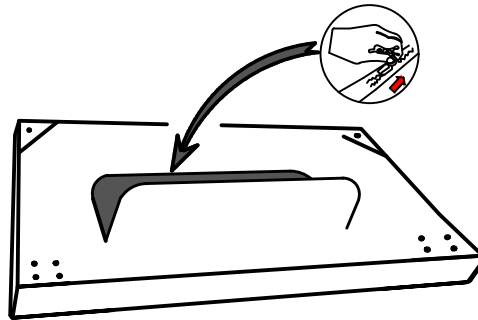
⑤ back sofa leg(2pcs)



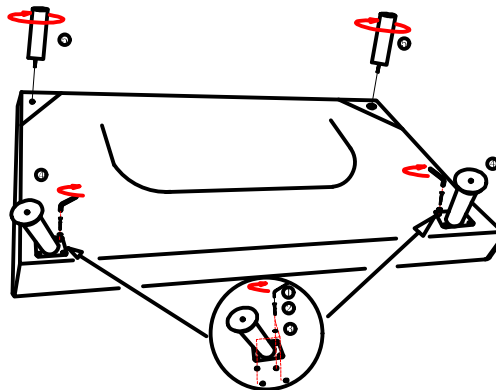
⑥ sofa pillow(2pcs)



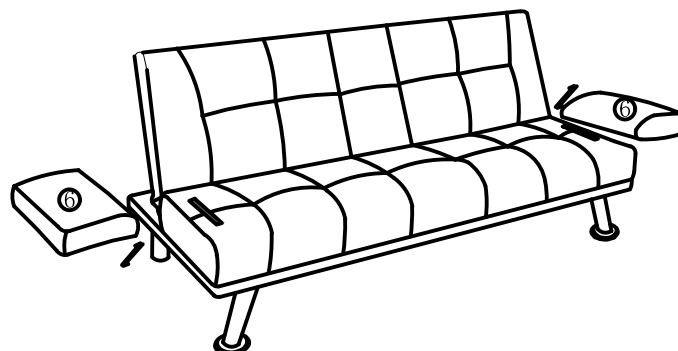
1. Open the zipper, take out the pillow, hardware foot and accessories



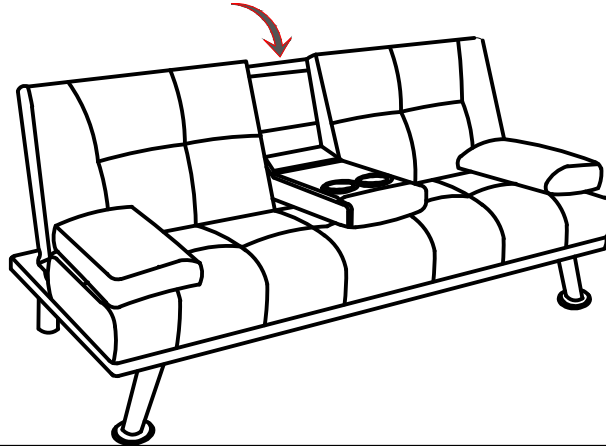
2. Install the front foot, lock it with screw and gasket, install the back foot and rotate clockwise.



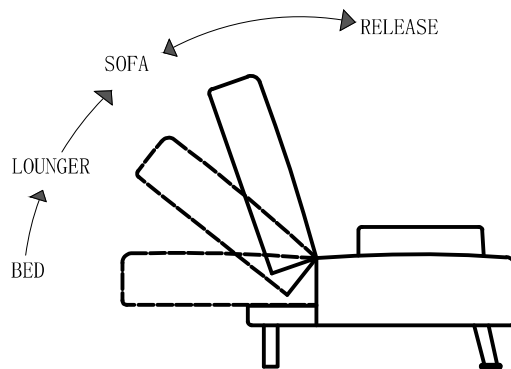
3. Release the pillow, magic stickers coincide with magic cloth



4. Turn over and put down the side of the side of the coffee table.



2. Turn over the parallel frame to reflect the functions of different gears and sofas.



6. The assembly is completed.

