

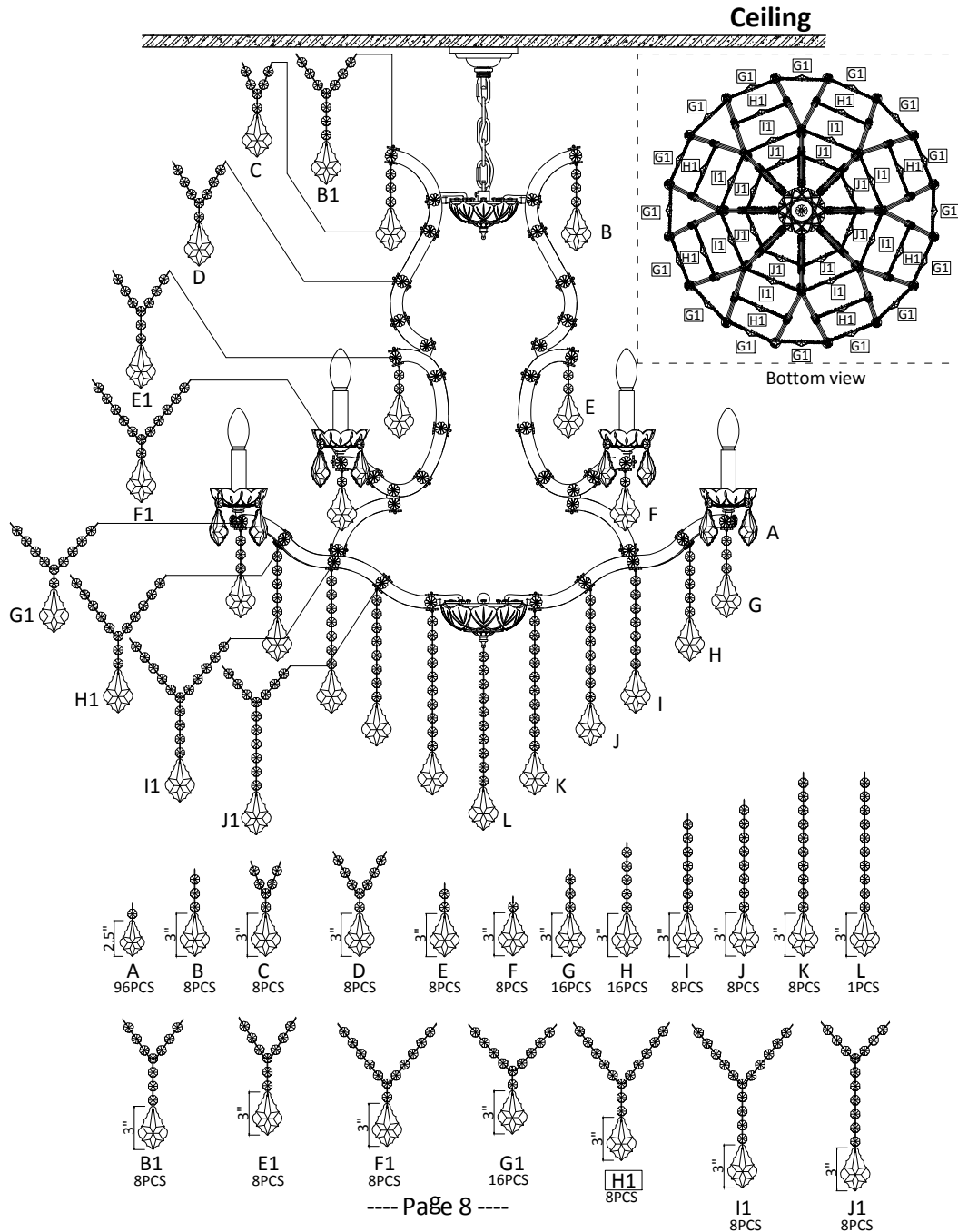
Step VII

The following is a list of all crystals and their positions on the chandelier. Please strictly follow the diagram to hang the crystals, as hanging them in the wrong position may result in insufficient of crystals

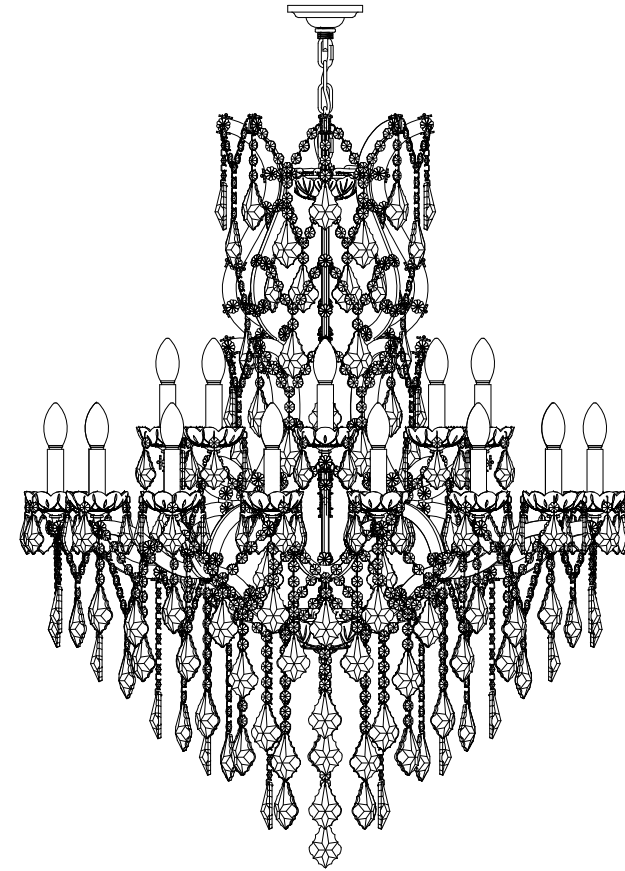
Notes: 1) 'A' is 2.5" medium size crystal pendant, others are 3" large size crystal pendant.

2) There are spare parts for crystals in package.

3) Crystals "C""D" "B1""E1" "F1" "G1" "H1""I1" "J1" are hung between 2 adjacent light arms. (Bottom view)



INSTALLATION MANUAL



- ◆ The installation process will take some time and requires your patience. Thank you!
- ◆ For transportation safety, the product needs to be assembled, and crystals need to be hung.
- ◆ This product has a larger size and requires installation and wiring, **WE RECOMMEND INSTALLATION BY A LICENSED ELECTRICIAN.**
- ◆ Require 24 pieces E12 bulbs(110V, Max 60W), not included in package, if you want it dimmable, please purchase a dimming bulbs with matched dimmer.
- ◆ please wear gloves for installation, especially when hanging crystals



SAFETY INSTRUCTIONS

These instructions are provided for your safety. It is very important that they are read completely before beginning the installation of your fixture.

1. WE RECOMMEND INSTALLATION BY A LICENSED ELECTRICIAN.
2. This fixture require 24 pieces E12 bulbs(not included in product) , bulb rated wattage Max 60W. To avoid risk of fire, do not exceed the recommended wattage.
3. If any special control devices are used with this fixture, follow the instructions carefully to assure full compliance with N.E.C. requirements. If there are any questions, contact a qualified electrical contractor.
4. please make sure shut off the main electrical supply before installation, changing bulbs or cleaning light fixture.



WARRANTY & SERVICES

1 year warranty services are provided for this light fixtures.

We provide 24-hour customer service, and any questions you have will be answered within 24 hours, If you have any questions or problems during the warranty period, please feel free to contact us via email, your order ID and details are preferred so that our customer service will help you more quickly and accurately!

Note: please use this light fixture accordingly to its intended purpose, do not retrofit or remodeling this light fixture. The warranty does not cover if the failure is caused by the third party product, or natural disasters.

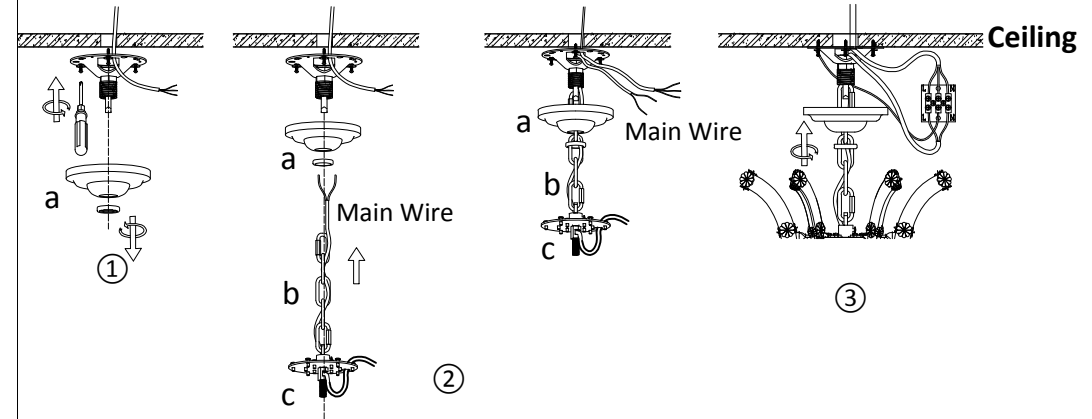


PREPARATION

1. Before begining installation, make sure all parts are included refer to the contents diagrams(PACKAGE CONTENTS). if any Part is missing or damaged, do not attempt to assemble, install or operate the product.
2. 24 pieces E12 bulbs(Max.60W) are required.
3. Any question or problem, please feel free to contact us.

Step IV

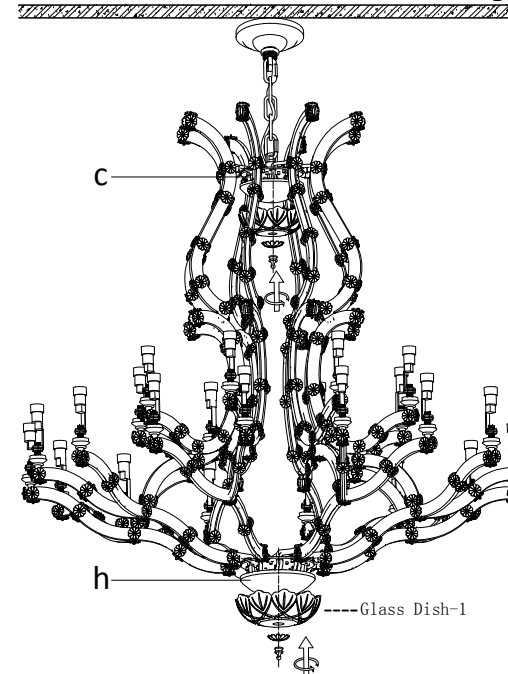
- ① Take off the mounting bracket from ceiling canopy(a), and install it on ceiling.
- ② Hanging the lamp frame on mounting bracket with metal chain.
- ③ Connect wires, and cover the ceiling canopy on mounting bracket as shown.



Step VI

Install Glass Dish-1 on Arm Supporter-1(c) and Supporter-2(h)

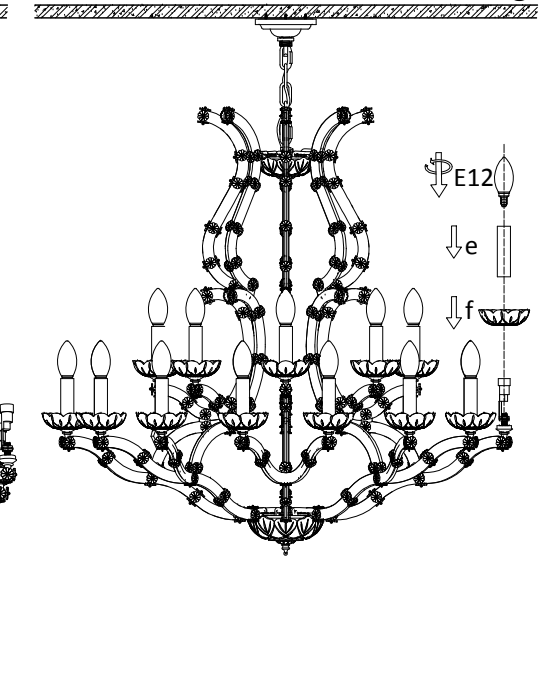
Ceiling



Step VII

Put Candle tube(e) and Glass Dish(f) on lamp holders.

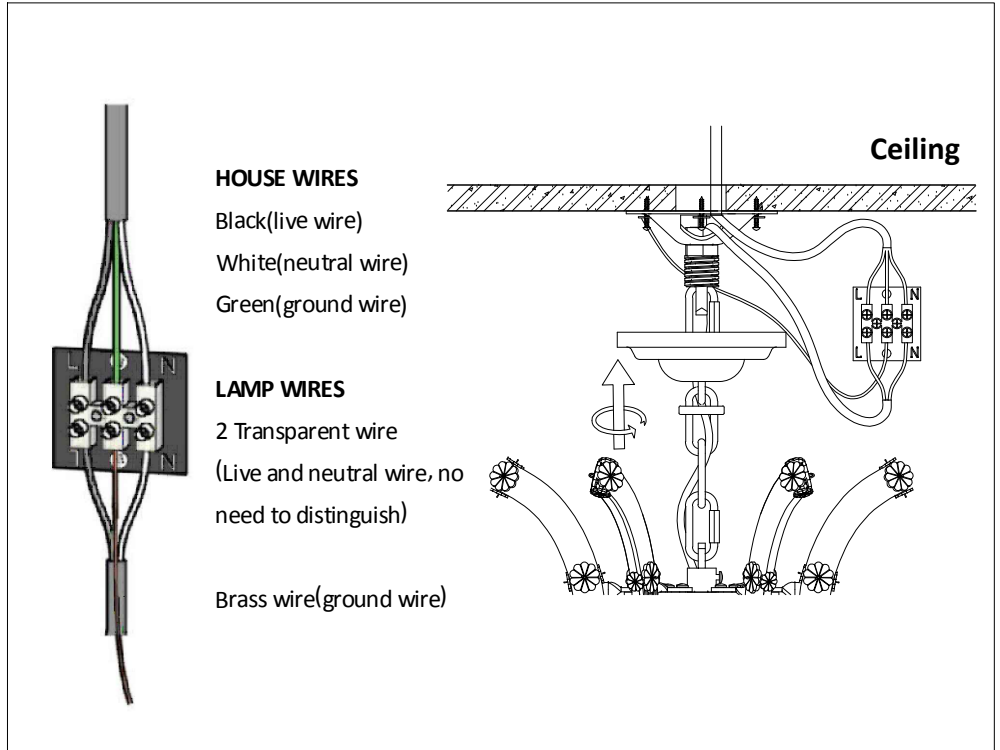
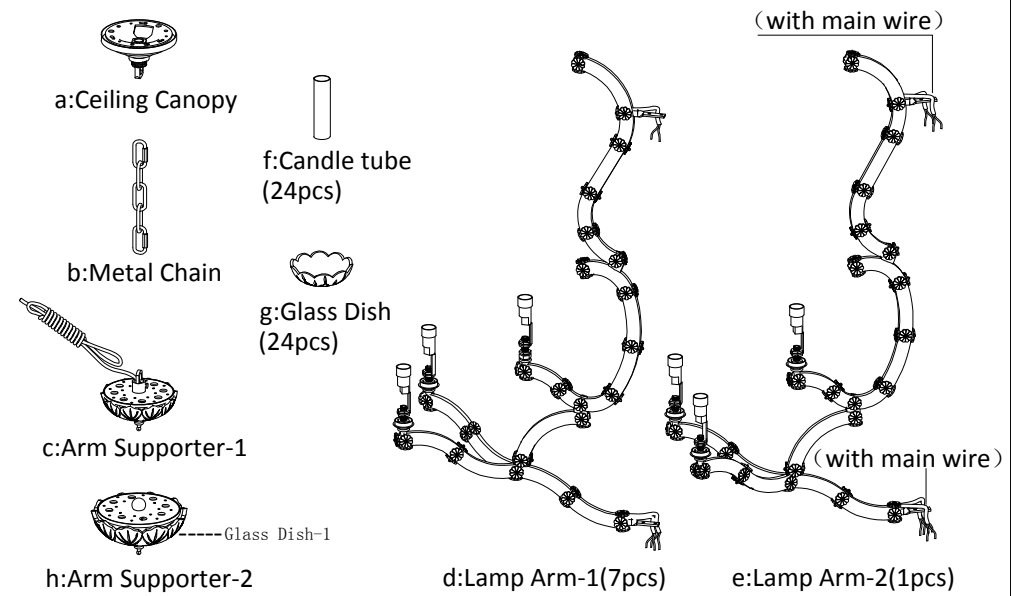
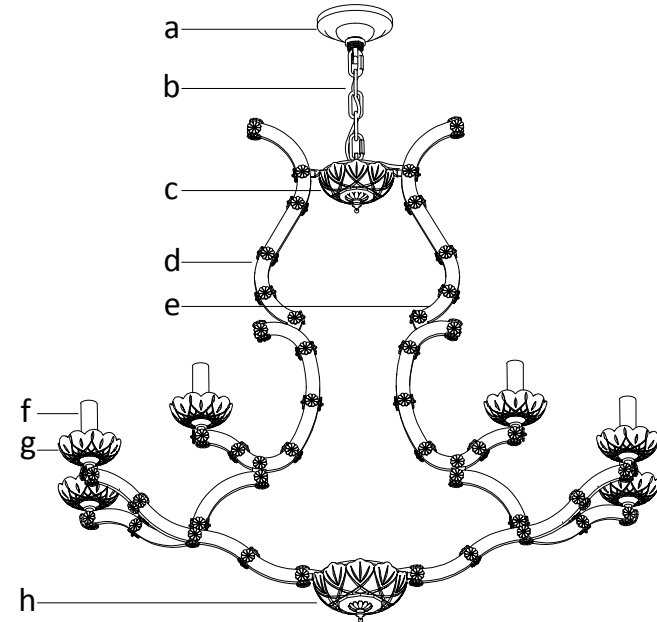
Ceiling



STRUCTURAL DIAGRAM & PART LISTS

The following is a list of all accessories and their positions on the chandelier (crystal parts will listed Page 8)

Notes: There are spare parts available for the glass dish and crystals.



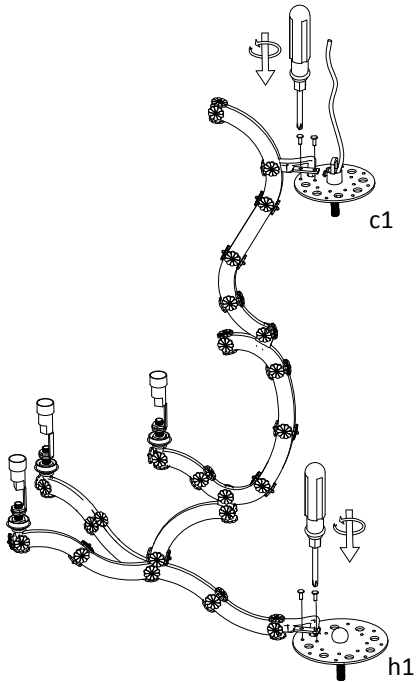
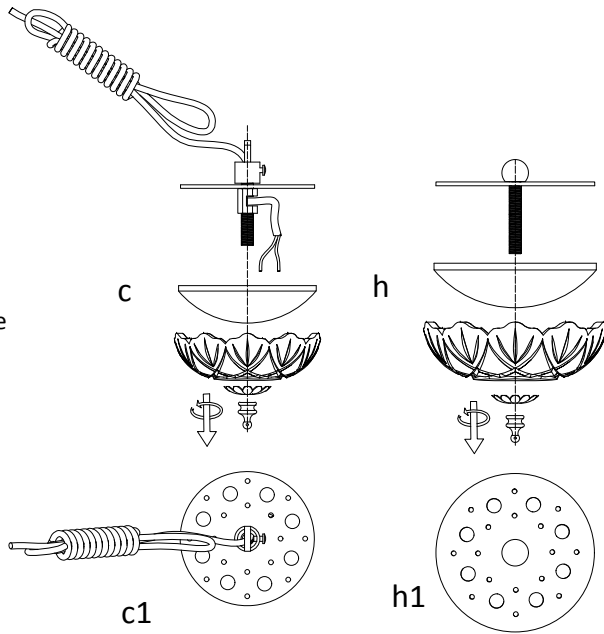
NOTES:
 The diagram is only for reference installation method of ceiling plate, please install according to the actual ceiling situation.
 If you don't need such a long chain, please cut it appropriately short before hanging it. If you want to increase the length of the hanging chain and wires, please purchase eligible wires and hanging chains that meet the standards and replace and install it by professional electricians.

WARNING: Never connect ground wire to black or white power supply wires.
 please make sure shut off the main electrical supply before installation.

INSTALLATION STEPS

Step I

Take apart Arm Supporter-1 (c) and Arm Supporter-2 (h), get the upper metal disc(c1) and lower metal disc(h1)



Step II

Fix the lamp arms(d/e) on the metal discs with screws as shown in the diagram. thread the wires on the lamp arm through the adjacent holes on the disc.

With the same method, install the 8 lamp arms on the upper metal disc(c1) and lower metal disc(h1).

Step III

Connect the wires of lamp arms as shown.(details on page 6)

(each transparent wire have 2 sub-wires, one as live wire, and other one as neutral wire, no need to distinguish. however, please noted that not to connect 2 sub-wires in same transparent wire together, avoid short circuits)

Put on the E12 bulbs and test whether the power is ok.

