

Full Length Mirror (3 Installation Options)



1.Free standing



2.Lean to the Wall



3.Hang on the Wall

Installation Instruction

Before
Installation

- * Please make sure that the installed wall is a load bearing wall.
- * Please attention to avoid wires or water pipes when drilling.

Product and accessories



Mirror*1



Power adapter*1



Non-slip Mat*6



Screw*2
Expansion screw*2

Tools Needs (not included in the package)



Pencil



Electric Drill



Hammer



Tapeline



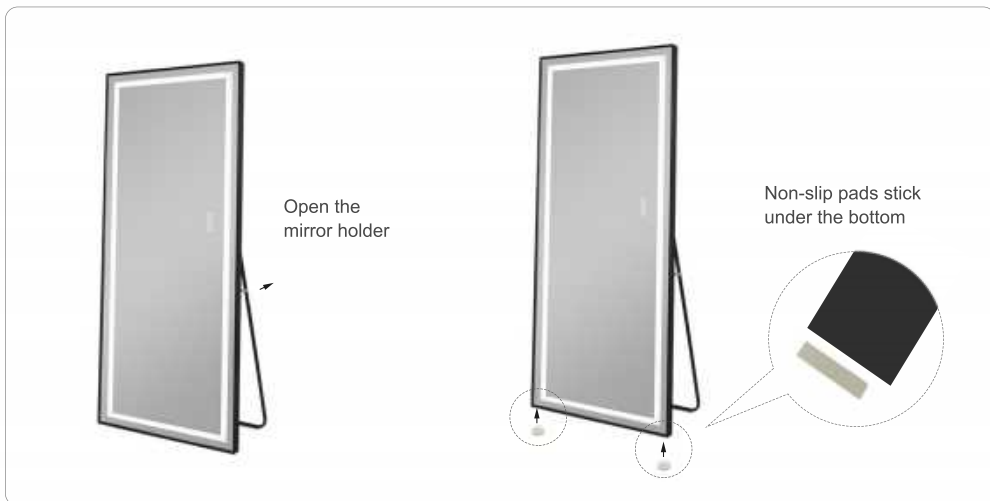
Level Ruler



Screwdriver

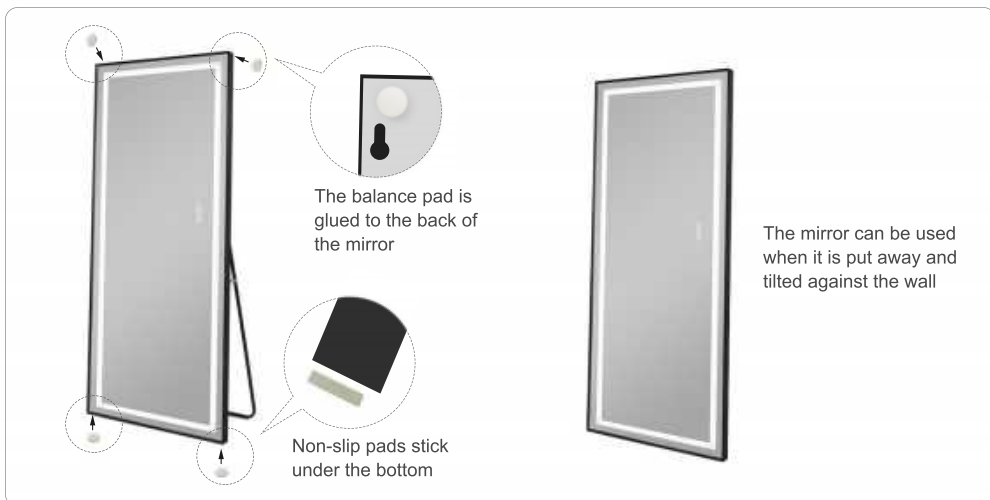
1. Free standing

Attach two non-slip pads to the bottom of the mirror, and stretch the support under the ground directly .



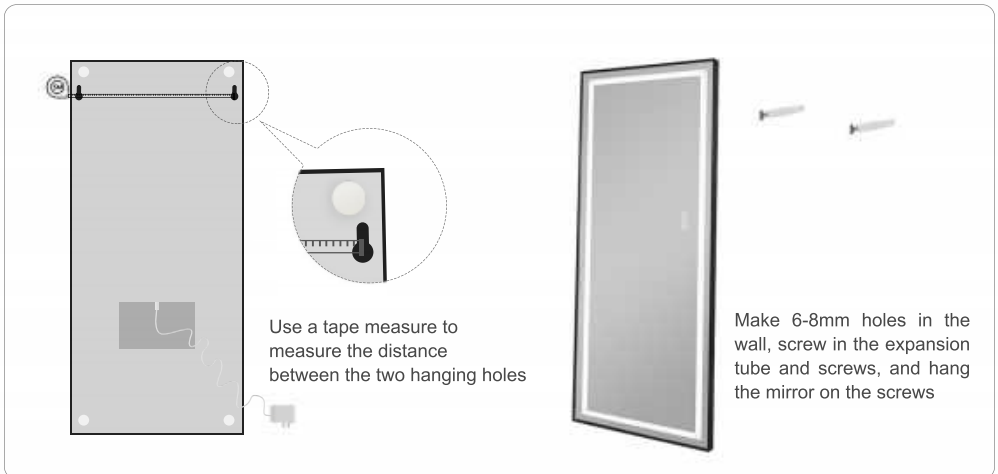
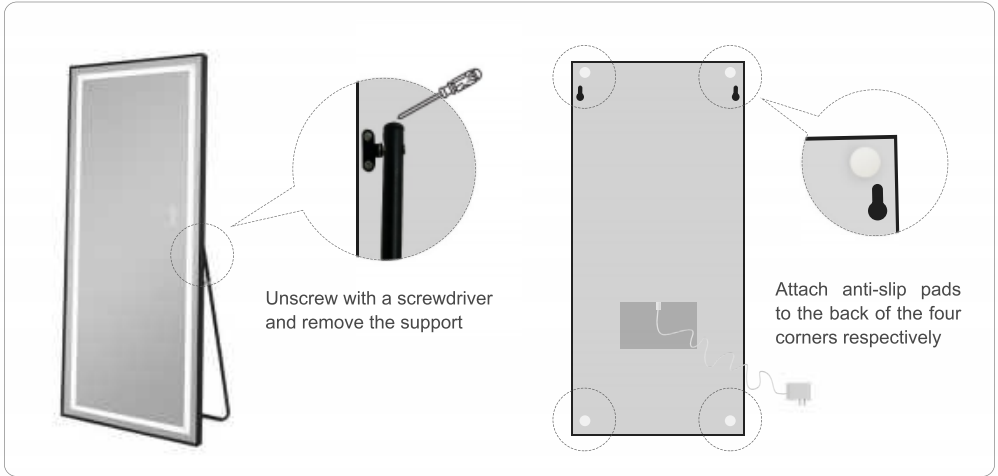
2. Lean to the Wall

Put two non-slip pads on the bottom, two non-slip pads on the back of the mirror, put the bracket away and lean against the wall.



3. Hang on the Wall

Remove the support of the mirror, paste four anti-slip pads on the back of the mirror, drill holes on the wall and screw into the expansion tube and screws, and hang the mirror on the screws





- **Power button**



- **Short press the switch** : Switch the light color
- **Long press the switch** : Adjust the color temperature



- **Long press the switch** : Infinitely adjust the brightness



When turning off the lights



All switches light up slightly



When turning on the lights



All switches light up



More attention:

1. Please take care to ensure that all metal parts are kept away from electricity
2. For indoor use only.



Fragile Handle with care

Note:

The product is fragile. Be careful during unpacking and installation.

The product works from -45°C to + 35°C.
The product should be cleaned by standar detergents and soft cotton cloth.