

Installation Instructions for SPC Floors

SPC interlocking vinyl Flooring (Stone Plastic Composite) features interlocking planks for easy installation and is installed as glue less floating floor. The interlocking planks lock together to provide a tight water resistant seam, can be installed over most floor surfaces, and is suitable for both residential and light commercial interior applications.

General information

1. Flooring should be transported and stored in a neatly stacked fashion on a smooth flat surface.
2. Acclimate the flooring and the rooms to be installed for 48 hours at a constant temperature between 65° and 85°F (18.33° and 29.44°C) before, during, and maintained after installation.
3. SPC Planks should only be installed after other trades have finished and the jobsite has been cleaned and cleared of debris that could potentially damage a finished plank installation.
4. Inspect flooring for damage, defects, or shading issues before installation; claims for visual defects will not be accepted after cutting and/or installed.
5. Mix and install planks from several different cartons during installation to ensure a random appearance.
6. Leave 1/4 inch (6.35mm) for expansion around the entire perimeter of the flooring.
7. Flooring should be protected from direct exposure to sunlight.

Subfloors:

SPC Floors can be installed over a variety of subfloor surfaces including concrete on all grade levels, wood and many existing hard surface floors. The subfloors must be clean, smooth, flat, solid (no movement), and dry. **Do not install planks over floors that are sloped for drainage.** Any uneven areas greater than 3/16 inch (4.76mm) in a 10 foot (3.05m) radius should be leveled with a Portland cement based patching compound.

SPC Plank is resistant to water damage but they do not prevent the transmission of moisture. Care should be taken to keep moisture from collecting on either side of the flooring to prevent the growth of unhealthy mold and mildew.

Concrete Subfloors:

SPC Planks can be installed over concrete on all grade levels if a proper moisture barrier is used. A minimum 6 mil polyethylene moisture barrier must be used with concrete subfloors. Moisture vapor emissions should not exceed 5 lbs./24 hour per 1,000 sq. when tested with the Anhydrous Calcium Chloride Test in accordance with ASTM F 1869 or 80% RH in accordance with STM F 2170 "Standard Test Method for Determining Relative Humidity in Concrete Slabs using in situ Probes. Any uneven areas greater than 3/16 inch (4.76mm) in a 10 foot (3.05m) radius should be leveled with a Portland cement based patching compound. Holes and cracks in the cement should be patched, and expansion joints should be filled with a latex patching compound. Newly poured concrete floors must cure for a minimum of 90 days. Please note it is the person installing the floor and/or the homeowner' s responsibility to ensure any moisture or alkalinity issues are resolved prior to installing the floor.

NOTE: Excessive moisture may cause the growth of unhealthy mold or mildew and/or cause staining of the flooring

Wood Subfloors:

Planks can be installed over a smooth, flat, level wood subfloor, underlayment grade plywood, lauan plywood and other underlayment recommended by the manufacturer for use with a floating plank floor. Subfloor should be flat within 3/16 inch (4.76mm) in a 10 foot (3.05m) radius. Wood subfloors must be suspended at least 18" above the ground. Adequate cross-ventilation must be provided, and the ground surface of the crawl space should be covered with a suitable vapor barrier. If installing over a crawl space, a minimum 6 mil polyethylene moisture barrier must be used.

NOTE: Avoid subfloors with excessive vertical movement or deflection because subfloor movement may cause the locking mechanism to wear down, or even break. Indications of excessive deflection are subfloor fastener release, squeaking, compromised or sectional contours such as bowing or dipping in floors and uneven flooring material. Nail or screw subfloor panels to secure boards with excessive vertical movement or deflection prior to installation of the flooring material.

Existing Flooring:

SPC planks can be installed over a variety of finished floors including single layer resilient sheet flooring/ tile, ceramic, marble and terrazzo. The surface must be in good condition and show no signs of excessive moisture conditions. Grout joints and heavy embossing in tile or vinyl must be leveled so they are flush with the flooring surface. Additionally the tile may require several skim coats to achieve a flat surface. SPC Floor, Carpet, heavily cushioned vinyl floors or vinyl floors consisting of multiple layers are NOT a suitable subfloor for installation.

Moisture Barrier and Underlayment:

While it is not necessarily difficult to install a Uniclic floating floor, you may want to consider having it done by a professional installer. Bare concrete floors require a moisture barrier of at least 6 mil polyethylene films with the sheets overlapping 6" and taped to prevent moisture migrating to the flooring. Using foam padding over the moisture barrier is recommended, but not required. Ask your retailer for their recommendations. You may choose to use a 2 in 1 type underlayment (moisture & padding). You can also install over sound deadening underlayment (3 in 1) with this method.

INSTALLATION

Pre-installation inspection:

It is the duty of the person installing the floor to inspect all flooring before installation. If during inspection the installer or buyer feels the floors is the wrong color, improperly manufactured, is off-grade or is the wrong gloss level, he/she should NOT install the flooring. Please immediately contact the retailer from which the flooring was purchased.

1. Determine how you want the flooring to run. Typically for plank products, the flooring runs the length of the room. There may be exceptions since it is all a matter of preference.
2. To avoid narrow plank widths or short plank lengths near the walls/doors, it is important to do some pre-planning. Using the width of the room, calculate how many full boards will fit into the area and how much space remains that will need to be covered by partial planks.
3. Start with a whole plank in the left hand corner of the room with the tongue side and end toward the wall. Lay the first row of planks along a chalk line and trim to fit to the wall allowing a 1/4 inch (6.35mm) expansion space. If starting the first row with a whole width plank it will be necessary to trim the tongues next to the wall, then place the cut ends next to the wall. To trim the planks, use a utility knife and a straight edge to score the top surface of the plank, and then bend it downward to separate the pieces, you can also use a VCT (Vinyl Composition Tile) cutter for end cuts only; a table saw also works well for both end and length cuts.
4. Align and attach the end joints of the planks in the first row. Insert the tongue into the groove while holding the plank at a 20° to 30° angle to the floor. Apply pressure inward and down until the planks lock together (**Diagrams 1a & 1b**). Use spacers between the long edge and end of the planks next to the wall to maintain the expansion space.

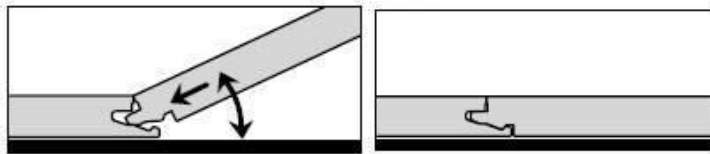


Diagram 1a Diagram 1b

5. Start the second row using 1/3rd of a plank. Place the cut end against the wall. Insert the tongue on the long side of the plank into the groove of the plank in the first row. Hold the plank in a 20° to 30° angle while applying pressure inward and down until they lock together. To complete the second and all successive rows, it will be necessary to lock the short end into the previous plank first before locking the long side of the plank. Angle the plank and push the tongue into the groove and adjust it until the tongue locks into place. It may be necessary to lift both planks slightly to lock the joint together. Complete the second row allowing 1/4 inch (6.35mm) expansion space at the start and end of the row.
6. Start the third row using a 2/3rd length of a plank with the cut end against the wall. Complete each row thereafter using a random layout with end joints off-set by at least 8" . Plan the layout to avoid using small planks (less than 6") at the walls. The cut piece at the end of the row can often be used to start the next row provided it achieves a random layout. Always place the cut end against the wall and allow for the expansion space.
7. SPC planks are unique in that they can also be installed with a pull bar or tapping block and rubber mallet or hammer in difficult areas, such as the last row, and when fitting under door trim. Use a pull bar and rubber mallet or hammer to lock the joints together in the last row. Always use a pull bar on the cut edge of the plank. Factory edges can be damaged if the pull bar is used directly against them.
8. When fitting around door trim it will be necessary to slide the plank under the trim. This can be accomplished easily by starting the row on the side of the room with the door trim and then sliding the plank into place once it is attached. The row can be completed by inserting the tongue into the groove or the groove into the tongue depending on the direction. A tapping block and pull bar (**Diagrams 2a & 2b**) can also be used to lock the joints together while the planks are in a flat position. Use a series of light taps until the joint is gradually locked together.

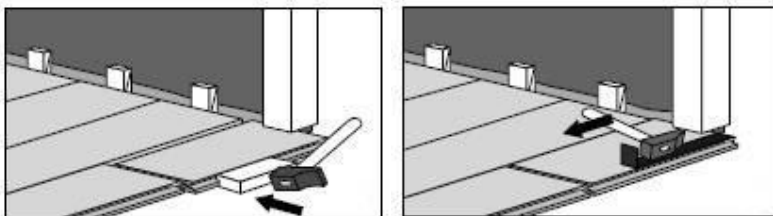
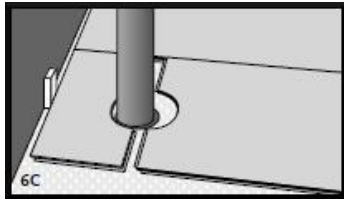
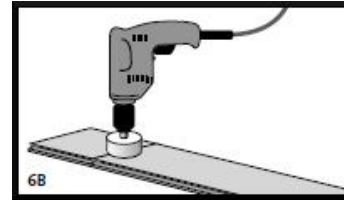
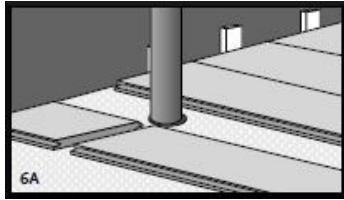


Diagram 2a Diagram 2b

9. **Bathrooms:** When SPC planks are installed in a bathroom the flooring can be laid under the toilet only if the floor is separated from adjacent rooms with a doorway threshold, and padding is not used. Otherwise the flooring should be installed around the toilet leaving a 1/8 inch (3.175mm) expansion space. Use 100% silicone caulking to fill the expansion space at the tub, shower and all wet areas to help prevent surface water seepage under the floor.

10.Pipes: In rows where there is a pipe or other vertical object through the subfloor, make sure the object lines up exactly where two boards will meet on the short ends. Take care to measure carefully before cutting, so the two boards end at the middle of the object. Use a drill or hole bit that is the diameter of the pipe or object, plus 1/2 inch (12.7mm) for expansion/contraction. Click the two short sides of the boards together, then drill the hole centered on the joint between the boards as shown. Now you can separate the two boards and install as normal. See **Diagrams 6A – 6C.**



Transitions, moldings, and wall base:

All transition pieces should be attached to the subfloor with a high quality construction adhesive, available at most Home Centers and Hardware stores. Place a generous bead of adhesive under the part of the transition that will sit directly on the subfloor, and then press the transition firmly in place. Be sure the transition sits firmly in the adhesive, and take care not to get any adhesive on the flooring. Remove any adhesive from the surface immediately with mineral spirits and buff off any residue with a dry soft cloth. It may be necessary to place heavy weights on the transition until the adhesive dries to ensure it will lay flat. Never attach the transitions directly to the flooring.

Finishing the Job:

Inspect your work, as it will cost you more if you have to come back to do a repair later. Replace original baseboards, or install matching hardwood baseboard. Install matching transitions as needed or recommended by your dealer or installer. It is not recommended or necessary to seal this floor after installation. Protect your floor from scratches by using felt pads on chair legs or furniture feet. Plastic rollers/castors can damage your flooring; if necessary try to replace with softer rubber wheels/castors. When moving heavy items like refrigerators, use at least two sheets of 1/4" Masonite or plywood while moving (sliding the appliance from one sheet to the next) to protect the flooring against scratching and denting.

Congratulations!

You have just installed a beautiful and elegant Floor!

Floor Maintenance

- Frequently moved furniture (chairs) should be equipped with felt pads to avoid scratching the floor and checked regularly. Heavy furniture and appliances should be equipped with non-staining large surface floor protectors. Furniture with castors or wheels must be easy swiveling, large surface non-staining and suitable for resilient floors. Do not use ball type castors as they can damage the floor.
- Avoid exposure to long periods of direct sunlight. Close blinds or drapes during peak sunlight hours
- Use walk-off mats at entrances to prevent dirt and grit from being tracked on to the floor.
- Sweep or vacuum the floor regularly to remove loose dirt. Avoid using a vacuum with a beater bar.
- Clean up spills immediately.
- Damp mop as needed using clean water and a diluted floor cleaner. Do not use harsh cleaners or chemicals on the floor.

REPAIRS

In the unlikely event that a plank is damaged for whatever reason, the simplest method is to disconnect the planks carefully (protecting the tongue and groove edges) until the damaged plank can be removed. Then replace the damaged plank with a new one and re-assemble the disconnected planks. This typically works for planks that are close to the two long perimeters of a room. For damaged planks that are not close to the perimeter, you may have to remove the damaged planks and insert new pieces without the short and long end grooves.

1. Using a sharp utility knife and a straight edge, cut out the center of the damaged plank by leaving approximately 1 inch (25.4mm) strip attached to the adjacent planks.
2. Carefully cut back from the four corners of the plank to the inside edges in space left by the cut out plank.
3. Remove the plank edges carefully from of the adjacent planks making sure the tongues and grooves of the adjacent planks are not damaged.
4. Using a sharp utility knife, remove the tongue strip on both the long and short ends of the replacement plank. In addition, remove the groove strip of the short end of the replacement plank.
5. Place two-sided carpet tape with one half under the sides of the adjacent planks where the tongues and the groove of the replacement plank have been removed. Only the top side release paper of the carpet tape should be removed. Leave the bottom side of the release paper in place, as it should NOT be taped to the subfloor.
6. Position the replacement plank by engaging the groove of the long side into the tongue of the adjoining plank and pushing down on the other three sides. The carpet tape will hold the replacement plank in place with its adjacent planks. Use a hand roller to further secure the tape.

Warranty

Commercial usage five years, Residential usage twenty five years

The finish of the SPC plank is warranted not to wear through under normal indoor residential use for a period of 25 years and 10 years for normal indoor light commercial use from the date of purchase. Finish wear-through is defined as 100% finish removal over a minimum of 5% of the total installation. Gloss reduction or surface scratches are not considered surface wear. The SPC plank is warranted to be free of manufacturing or material defects. This warranty applies to the original purchaser and original installation site.

The limited warranty applies to the original purchaser of the flooring and is not transferable with proof of purchase (original receipt of purchase with date and UPC code from carton box. Manufacturer's warranty and liability does not extend beyond the SPC flooring strips, the original installation site and is limited to a maximum value of the original purchase price of the SPC flooring. The limited warranty does not apply to products referred to "seconds", "mill trial" or "sold as is" grade products. The limited warranty does not cover conditions or defects caused by improper installation, inadequate subflooring or improper subflooring preparation. The limited warranty does not cover construction related damages.

The manufacturer or its representative reserves the right to visit the premise of the original installation site, where the product claim is generated. The manufacturer or representative will inspect the product in dispute and may remove samples, take pictures and/or conduct technical analysis of the original installation site. Failure of the owner to provide reasonable access to the claim area or to provide requested information and/or documentation may result in negation of the claim, thus it may void the warranty.

EXCLUSION FROM THE WARRANTY COVERAGE:

- Indentations, scratches or damage caused by negligence, fire, water, wet mopping, sand, pebbles, pets, high heels, spike shoes and abuse.
- Damages resulting from vacuuming cleaners with beater bar or power rotary brush head.
- Damages resulting from the use of a steam cleaner.
- Damages from abuse; such as moving appliances or furniture across the floor without any or adequate protection.
- Noises including, but not limited to squeaks, popping etc.
- Damages caused by footwear or footwear classified as toys, such as, but not limited to sneakers/ running shoes with rollers, wheel shoes, soccer cleats, roller skates, golf shoes, high heeled footwear with missing heel lifts etc.
- Naturally occurring changes in color from exposure to sunlight.

- Damage caused by failure to provide proper environmental conditions, including but not limited to maintaining proper humidity levels.
- Problems occurring due to poor installation workmanship.
- Problems occurring due to improper care and maintenance.
- Damages resulting from or caused by improper use of maintenance, such as, but not limited to:
 - *Loss of gloss or build-up of dulling film due to lack of maintenance or improper maintenance.
 - *Damage resulting from failure to follow reasonable floor care instructions.
 - *Scuffs, scratches, cuts or damage or discoloration from carpet dyes, fertilizers or other chemicals.
 - *Damage caused by burns, flooding, fires and/or other accidents.
 - *Use of mats that are labeled "non-staining".
- Damages resulting or caused by water or excessive moisture in the floor, in the subfloor or underneath the floor (pet urine, appliance leaks, household mechanical failures, leaking pipes etc).

HOW TO MAKE A CLAIM:

Any claim made under the warranty must be made by contacting directly your retailer within 30 days after the basis of such claim is detected. In addition, any claim under the limited warranty must be made before the end of the applicable limited warranty period. Proof of purchase including the date of purchase, as well as UPC code from packaging is required and must be presented to make a claim.

Disclaimer: Disclaims all other express or implied warranties, including any implied warranty of merchantability or fitness for a particular purpose, with the respect to the flooring product. Warranty cannot be altered by sales representatives or distributors.