

DOORS
 (/S/TOPIC/0TO1M000000MYUQW...

How to change your Classic Pet Flap

Identify the flap size

Count the number of magnets at the bottom and the rubber pegs at the top to determine the correct replacement size.



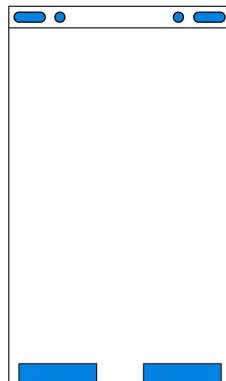
Extra large
 Magnets- 4
 Pegs- 6 long



Large
 Magnets- 3
 Pegs- 4 long

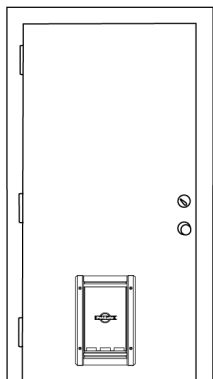


Medium
 Magnets- 2
 Pegs- 4 long

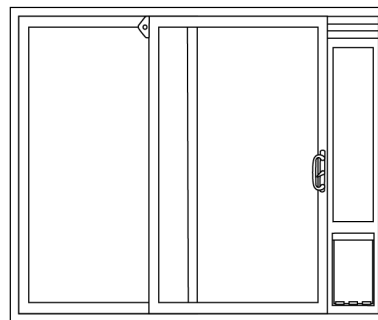


Small
 Magnets- 2
 Pegs- 2 long, 2 short

Choose your pet door:



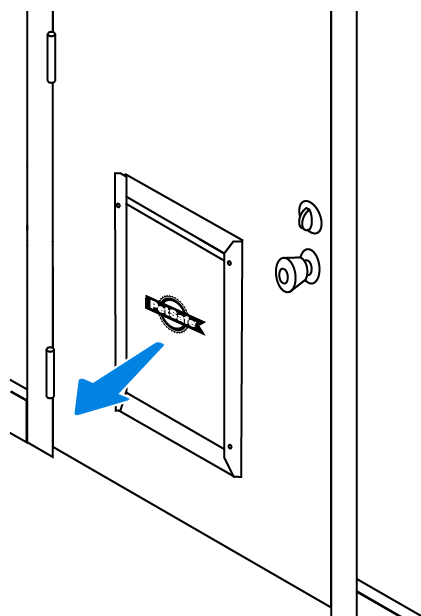
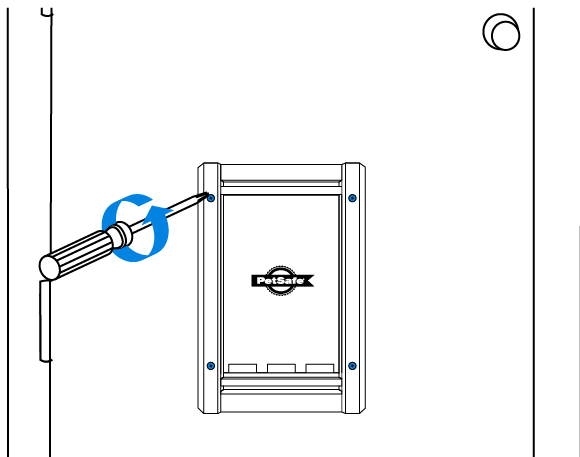
Standard pet door



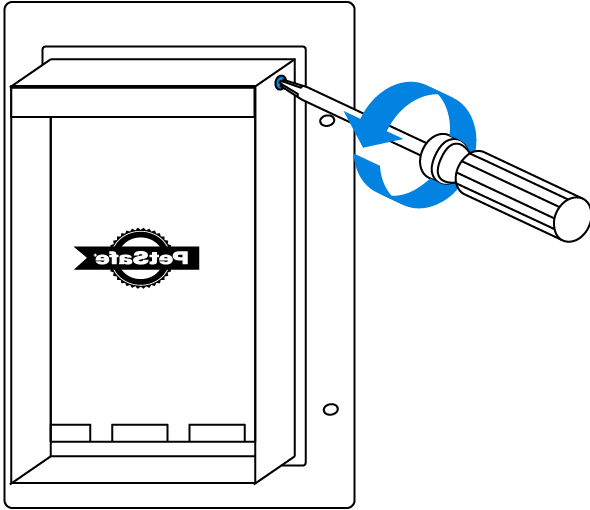
Patio panel

Standard pet door

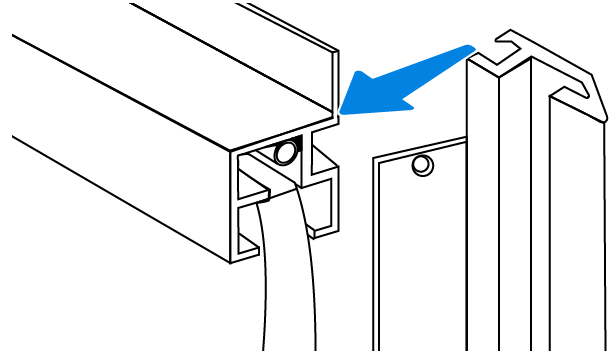
Replace the flap



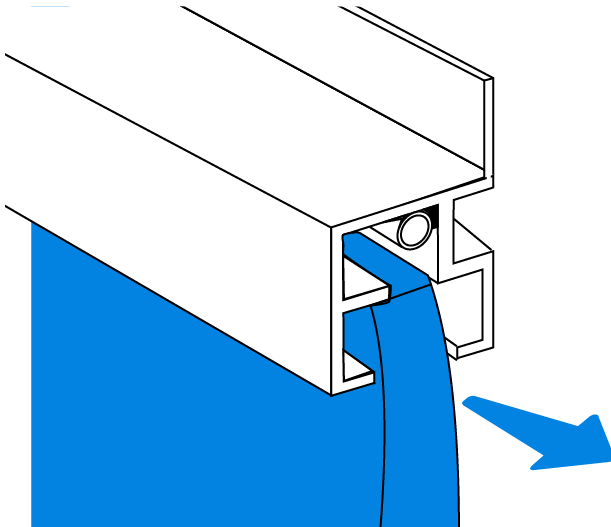
- 1** Remove the screws on the pet door frame.



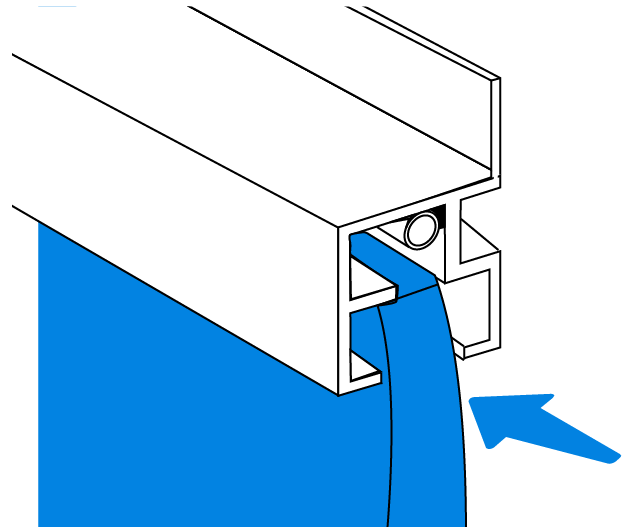
- 2** Remove the frame from the door.



- 3** On the frame holding the flap, remove the screw on the interior of the frame.

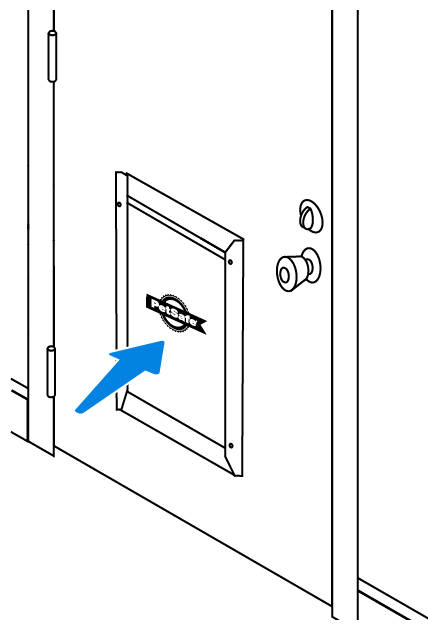
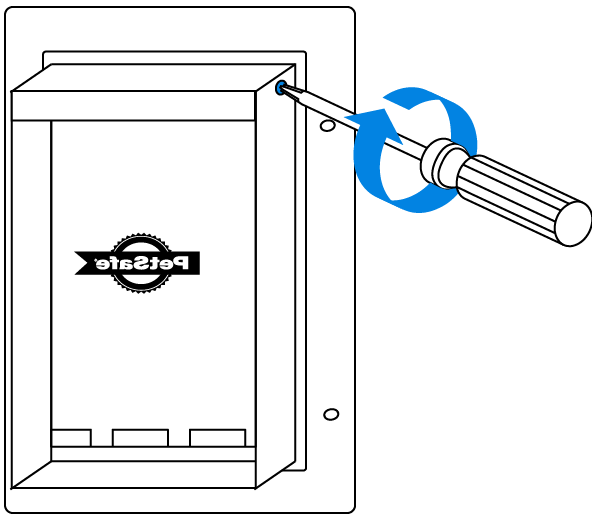


- 4** Separate the upper frame from the side frame.



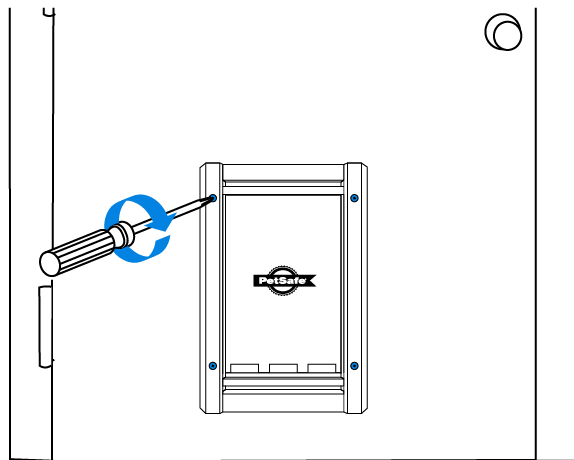
- 5** Slide the flap out of the upper frame.

- 6** Slide the new flap into the upper frame.



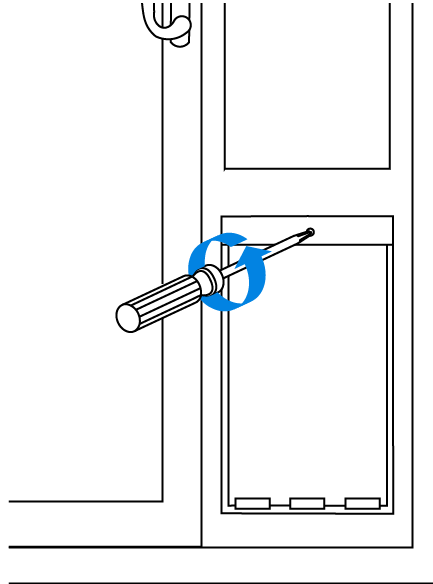
- 7** Align the upper and side frames.
Replace the screw, tightening until
resistance is felt.

- 8** Place the frame back into your door.



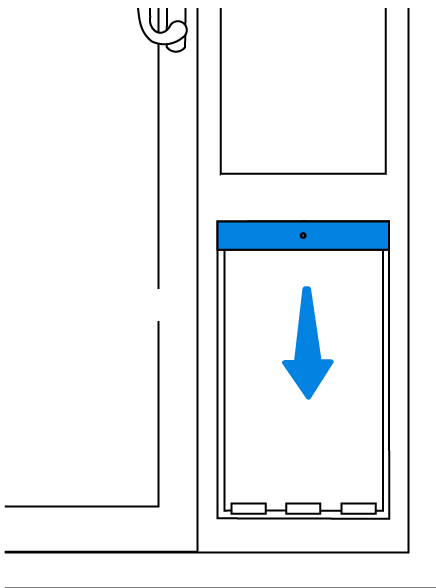
- 9** Tighten the screws until resistance is
felt to secure the frame.

Replace the flap

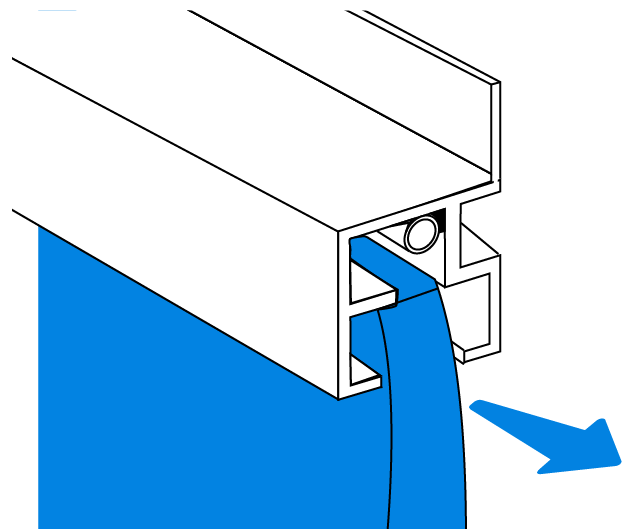


- 1 Remove the screw at the top of the pet door opening.

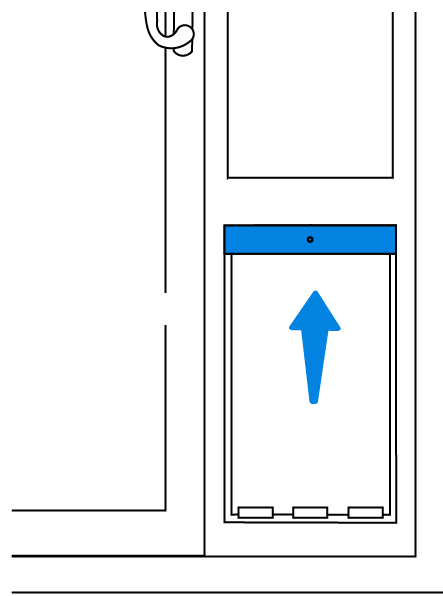
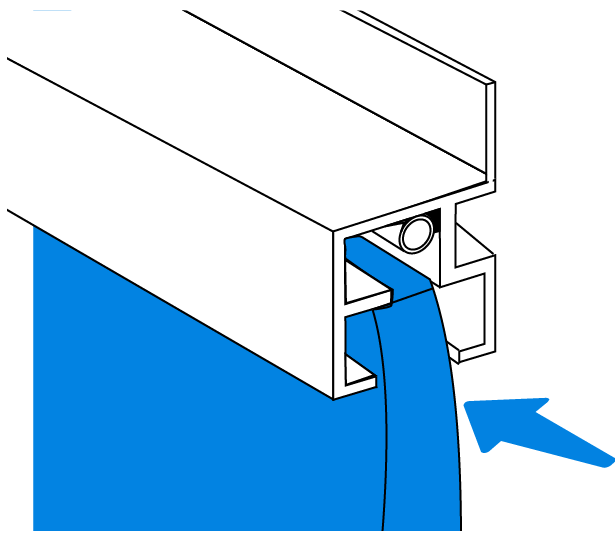
Note: Some models may have two screws, remove both.



- 2 Pull down on the metal flap holder to remove it from the pet door.

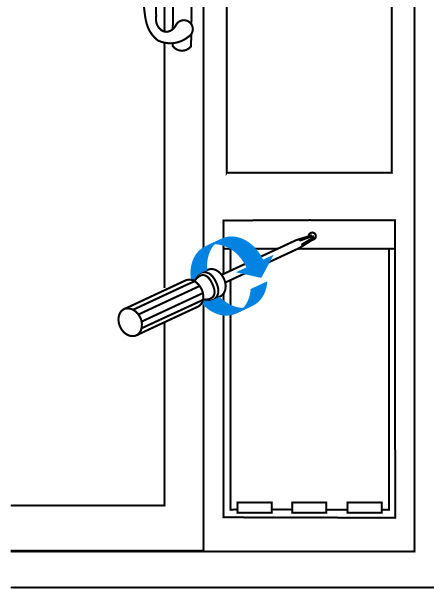


- 3 Slide the flap out of the flap holder.



- 4** Slide the new flap into the flap holder.

- 5** Reinsert the flap holder into the pet door frame.



- 6** Replace the screw to secure the flap holder in the frame. Tighten until resistance is felt.

Let us know how we're doing!

Your feedback helps our Customer Care team understand how we can better support customers like you in the future!

Was this article helpful?

Were you able to find what you needed?

Share your feedback...

Send

Related Articles

[How to Change your Freedom® Pet Flap \(/s/article/How-to-Change-your-Freedom-Pet-Flap\)](/s/article/How-to-Change-your-Freedom-Pet-Flap)

[How to Adjust your Freedom® Pet Flap \(/s/article/How-to-Adjust-your-Freedom-Pet-Flap\)](/s/article/How-to-Adjust-your-Freedom-Pet-Flap)

[How to change the batteries for your Electronic Pet Door \(/s/article/How-to-change-the-batteries-for-your-Electronic-SmartDoor\)](/s/article/How-to-change-the-batteries-for-your-Electronic-SmartDoor)

[How to change the mode on your Electronic Pet Door \(/s/article/How-to-change-the-mode-on-your-Electronic-SmartDoor\)](/s/article/How-to-change-the-mode-on-your-Electronic-SmartDoor)

[How to replace the flaps of the Extreme Weather Sliding Glass Pet Door™ \(/s/article/How-to-replace-the-flaps-of-the-Extreme-Weather-Sliding-Glass-Pet-Door\)](/s/article/How-to-replace-the-flaps-of-the-Extreme-Weather-Sliding-Glass-Pet-Door™)

Products



[Microchip Cat Door](#)



[Wall Entry Pet Door](#)



Freedom® Aluminum Pet Doors



Extreme Weather Pet Door™



Plastic Pet Door

Need Help?

Live Chat

Email Support (<https://www.petsafe.net/support/contact-us>)

1-866-738-4379 (tel:1-866-738-4379)

More Info

[Shop for Pet Products \(https://store.petsafe.net/\)](https://store.petsafe.net/)

[About PetSafe \(https://www.petsafe.net/about-us\)](https://www.petsafe.net/about-us)

[Door Flap Finder \(https://www.petsafe.net/support/door-flap-finder\)](https://www.petsafe.net/support/door-flap-finder)

[Register A Product \(https://www.petsafe.net/support/product-registration\)](https://www.petsafe.net/support/product-registration)

©2022 Radio Systems Corporation (<https://www.radiosystemscorporation.com/>) All Rights Reserved. [Privacy \(http://www.petsafe.net/privacy\)](http://www.petsafe.net/privacy) | [Wholesalers \(http://www.petsafe.net/support/wholesaler-info\)](http://www.petsafe.net/support/wholesaler-info) | [Investors \(https://radiosystemscorp.sharefile.com/\)](https://radiosystemscorp.sharefile.com/) | [Affiliates \(https://petsafe.affiliatetechnology.com/\)](https://petsafe.affiliatetechnology.com/)