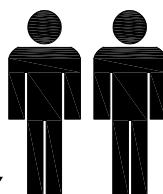


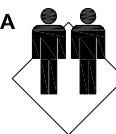
1.0hr

APPROXIMATE ASSEMBLY TIME

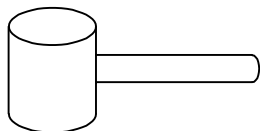
2 PERSON OF ASSEMBLY



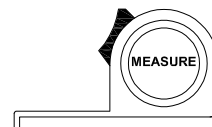
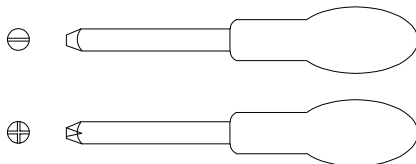
FLOOR AREA
1.0M X 2.2M



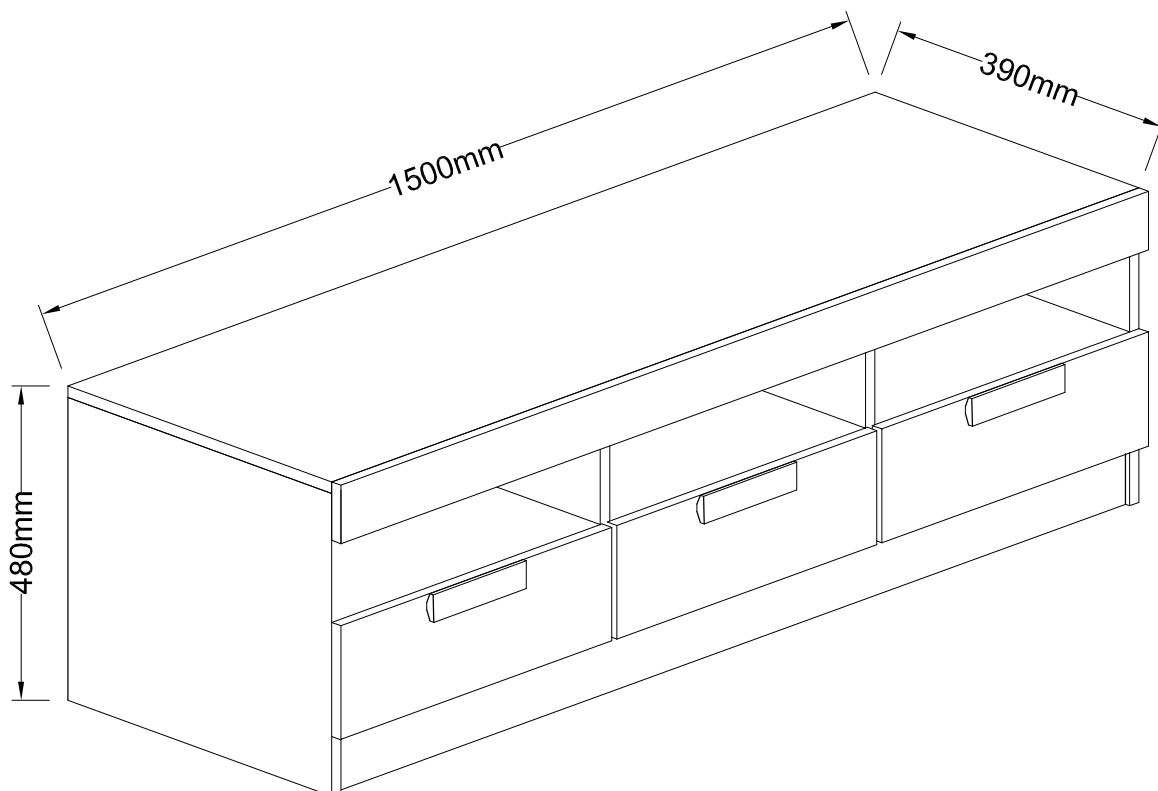
REQUIRED ASSEMBLY SPACE



REQUIRED ASSEMBLY TOOLS



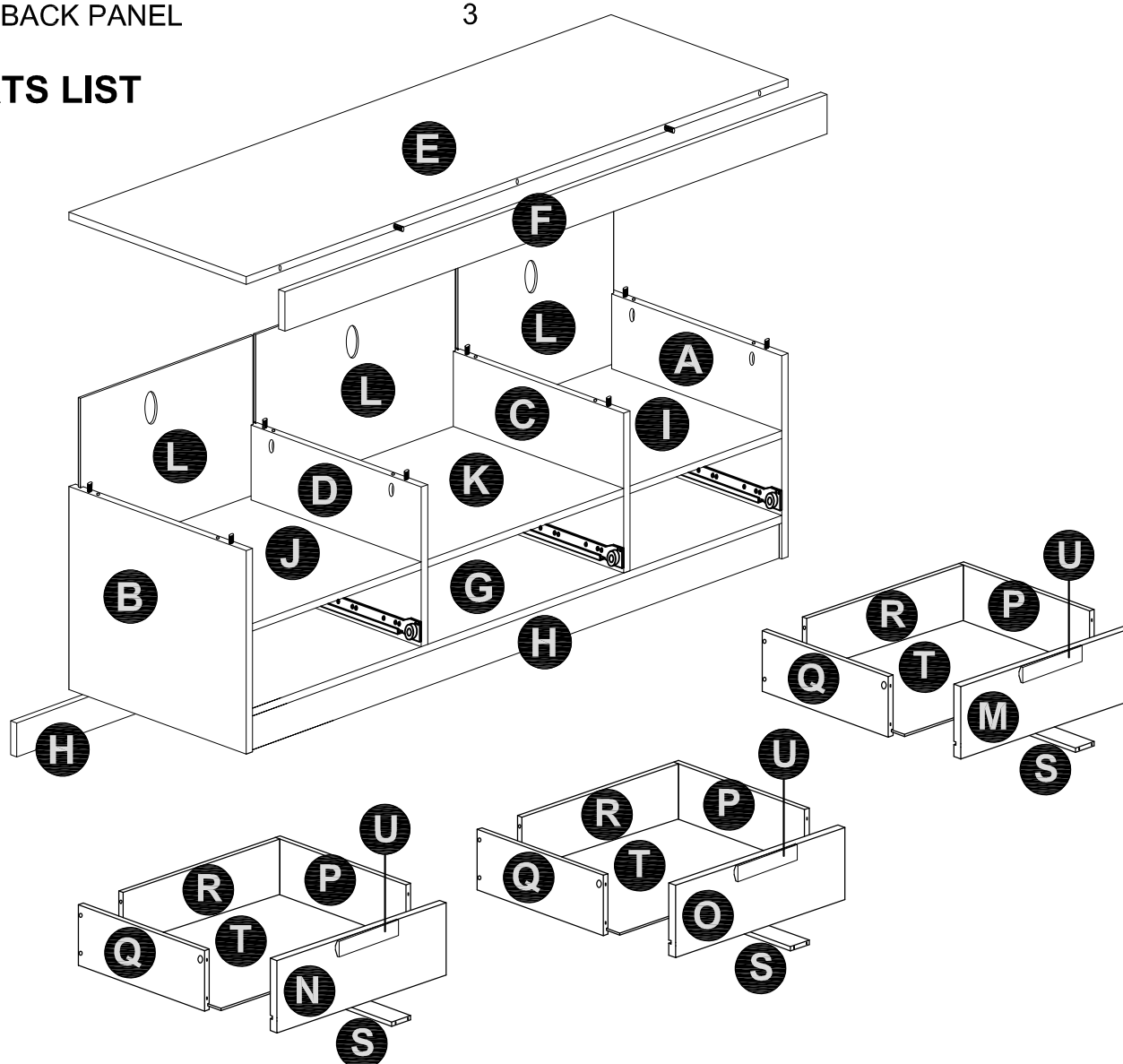
ASSEMBLED DIMENSIONS



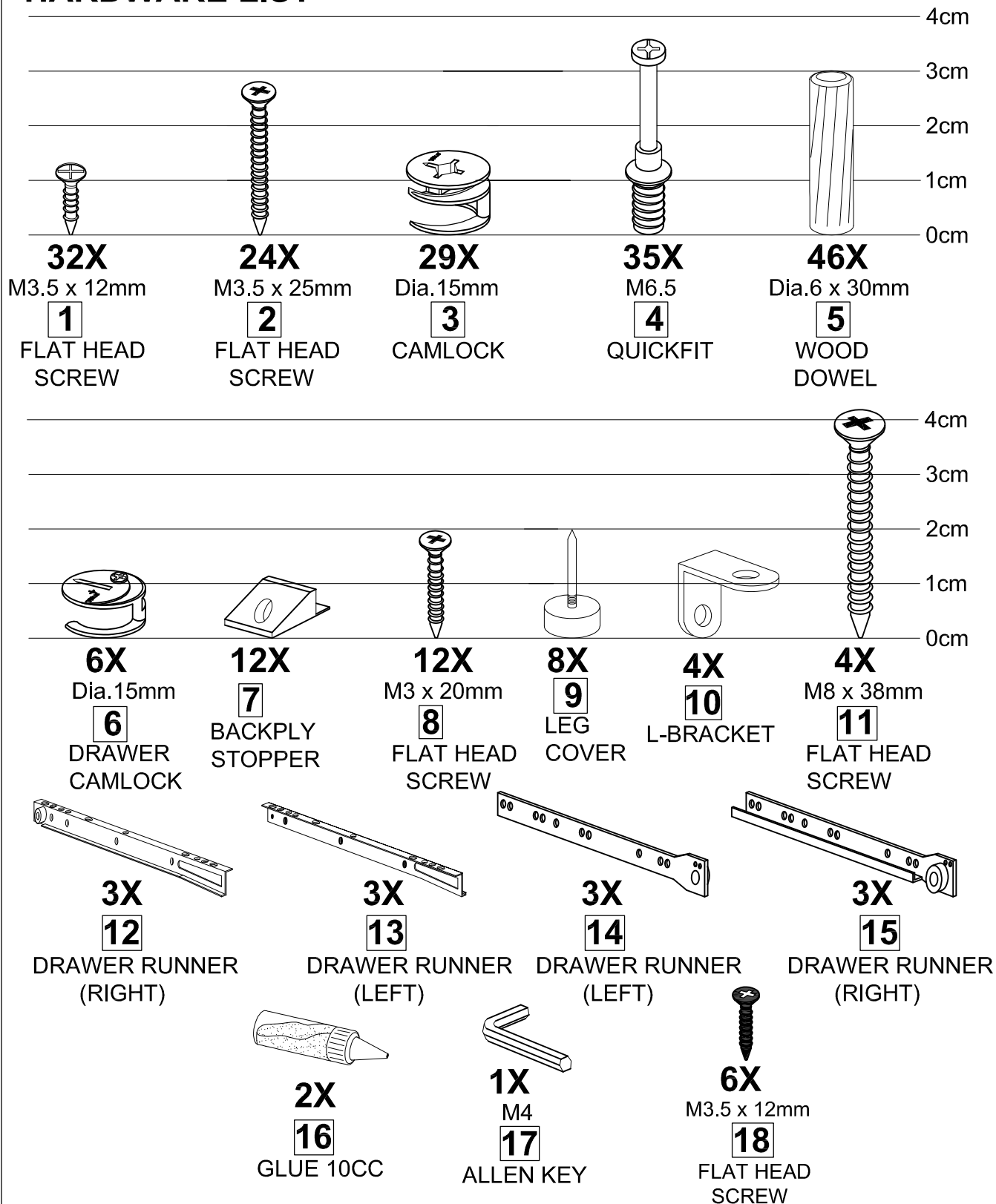
NOTE : THE MAXIMUM WEIGHT THIS PRODUCT CAN HOLD UP TO 30 KGS.

NO.	PART LIST	QTY	NO.	PART LIST	QTY
(A)	RIGHT SIDE PANEL	1	(M)	DRAWER COVER (RIGHT)	1
(B)	LEFT SIDE PANEL	1	(N)	DRAWER COVER (LEFT)	1
(C)	CENTRE PANEL (RIGHT)	1	(O)	DRAWER COVER (CENTRE)	1
(D)	CENTRE PANEL (LEFT)	1	(P)	DRAWER RIGHT SIDE PANEL	3
(E)	TOP PANEL	1	(Q)	DRAWER LEFT SIDE PANEL	3
(F)	FRONT PANEL	1	(R)	DRAWER BACK PANEL	3
(G)	BOTTOM PANEL	1	(S)	DRAWER BOTTOM SUPPORT	3
(H)	CROSSBAR	2	(T)	DRAWER BOTTOM PANEL	3
(I)	FIX PANEL (RIGHT)	1	(U)	HANDLE	3
(J)	FIX PANEL (LEFT)	1			
(K)	FIX PANEL (CENTRE)	1			
(L)	BACK PANEL	3			

PARTS LIST



HARDWARE LIST



Top Tips before you start!

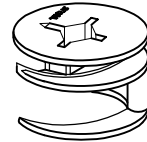
1. Please check that all parts are present before you start the assembly of your furniture, as once assembled, the furniture is exempt from our home approval policy.
2. For ease and speed of assembly, we recommend that before you commence each step of the assembly, that you identify all the parts required for that step.
3. For larger items, please ensure that you have sufficient space and people (as indicated on page 1) to assemble your product safely
4. We recommend that, where possible, all items are assembled near to the area in which they will be placed in use, to avoid moving the product unnecessarily once assembled.
5. For the protection of your furniture, particularly items of high gloss finish, we recommend that the product is placed on a protected surface during assembly to prevent any damage.
6. During assembly please take care not to over-tighten any fittings, as this may damage the product.
7. Always place the product on a flat, steady and stable surface.
8. Do not sit or stand on the product.
9. This product is intended for indoor, household use only as it is non industrial product.
10. This product is constructed from re-inforced hollow board. Excessive pressure will cause irreparable damage. Please do not kneel on any part of this product during assembly.

Care and Maintenance of your Furniture

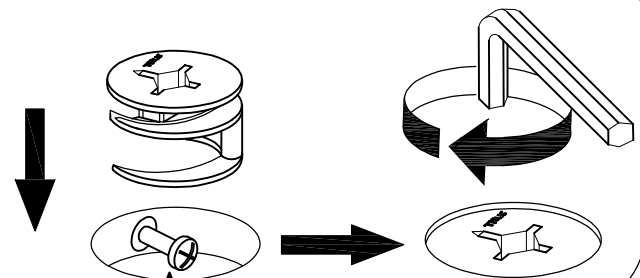
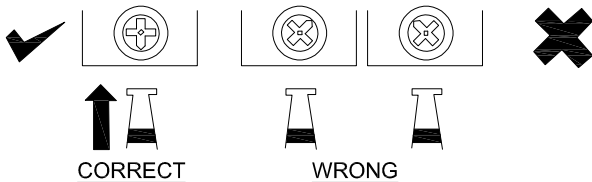
- Please periodically check all fittings are re-tighten as necessary.
- To clean your item, please use a damp cloth and wipe clean.
- Never allow any kind of liquid to remain on your furniture. Absorption can cause wood to warp or finishes to de-laminate.
- Please do not place hot items (e.g. hot drinks) directly on to the wood surface.
- Please do not drag and pull your furniture.

SPECIAL TIPS FOR FITTING CAM-LOCKS AND QUICKFIT

CAM-LOCK

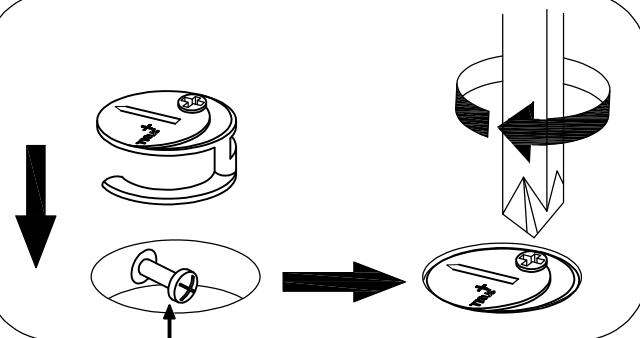


WHEN FITTING CAMLOCK
ENSURE STARTING POSITION IS CORRECT
BEFORE YOU INSERT CONNECTING QUICKFIT
TURN CLOCKWISE UNTIL SECURE



Quickfit head needs to be in centre

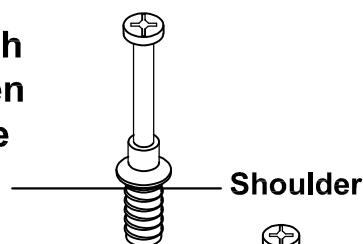
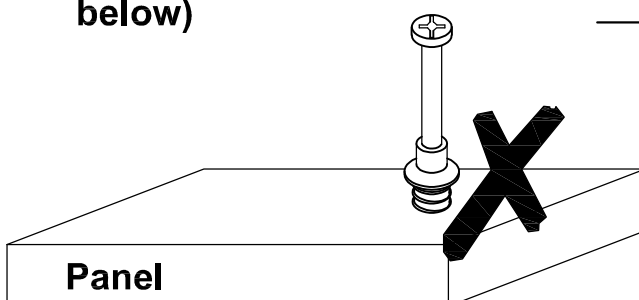
DRAWER CAM-LOCK



Quickfit head needs to be in centre

QUICKFIT

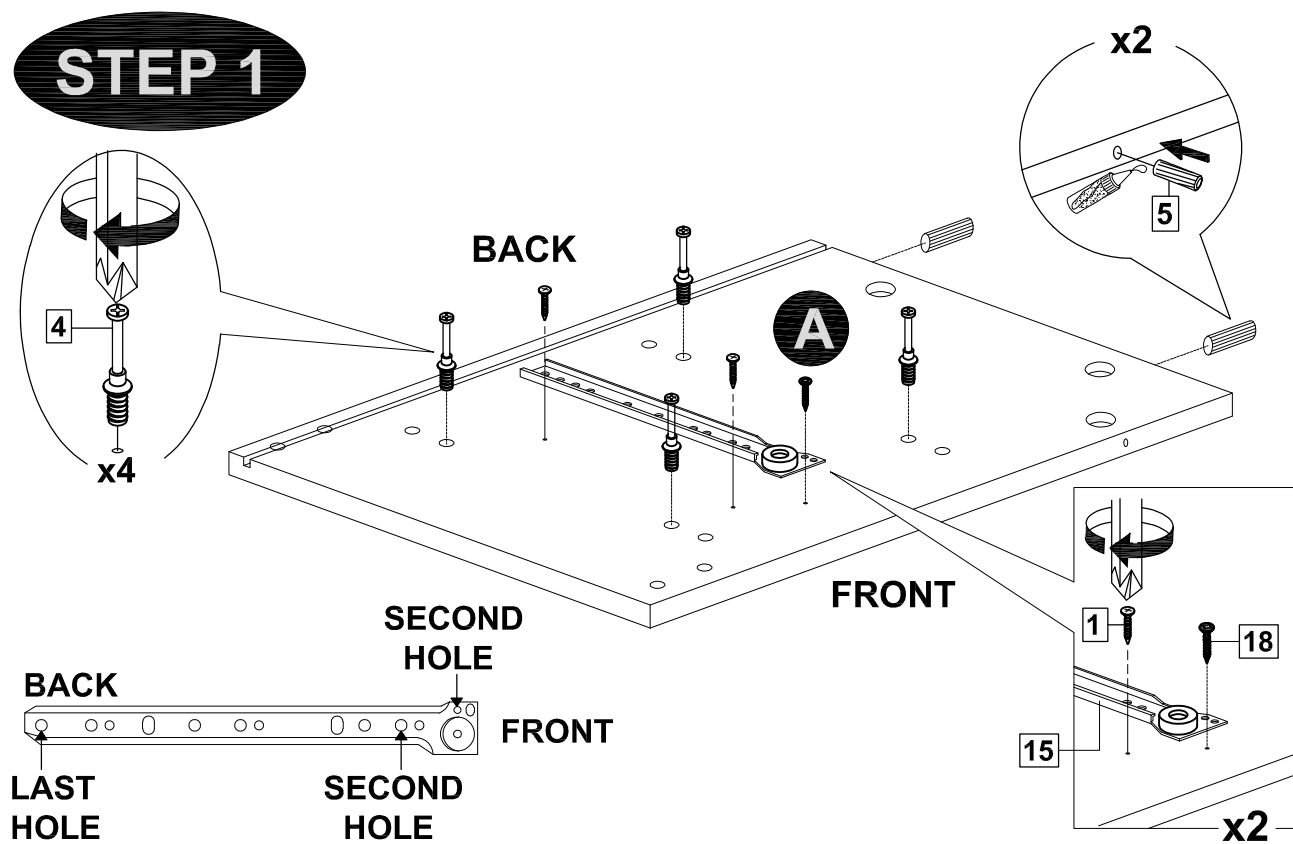
Tighten until shoulder is flush with panel. Do not overtighten or undertighten (see example below)



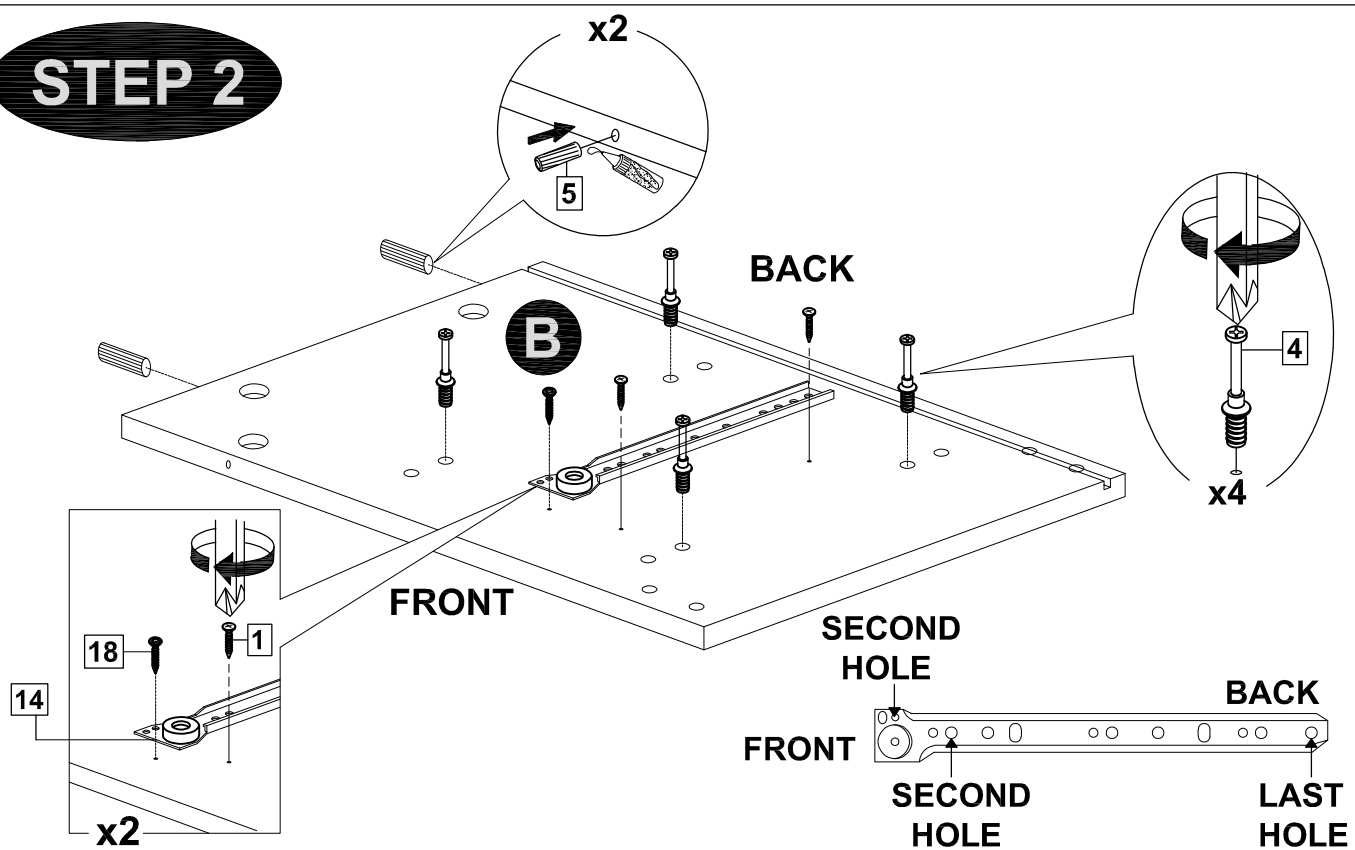
Shoulder

Panel

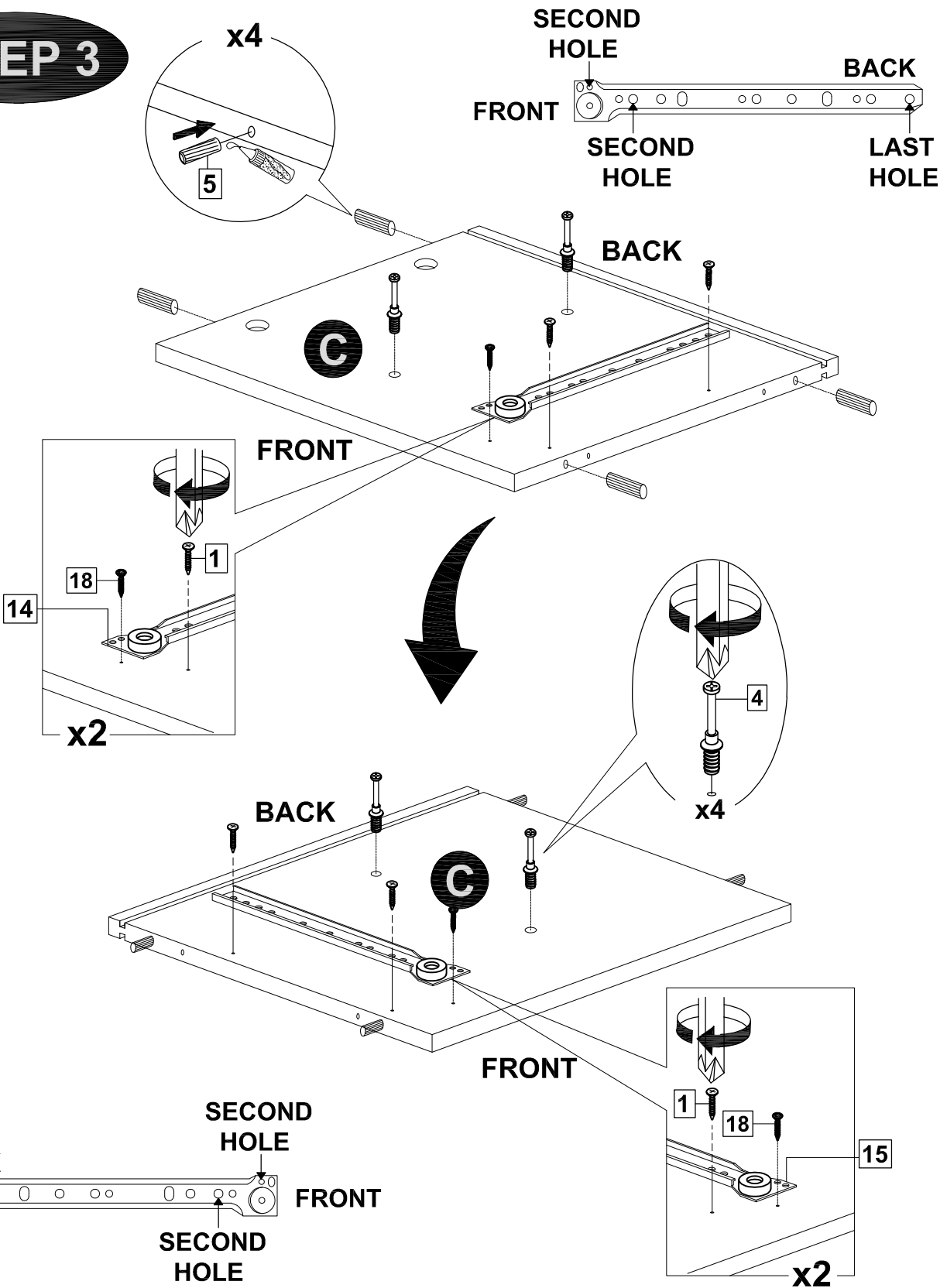
STEP 1



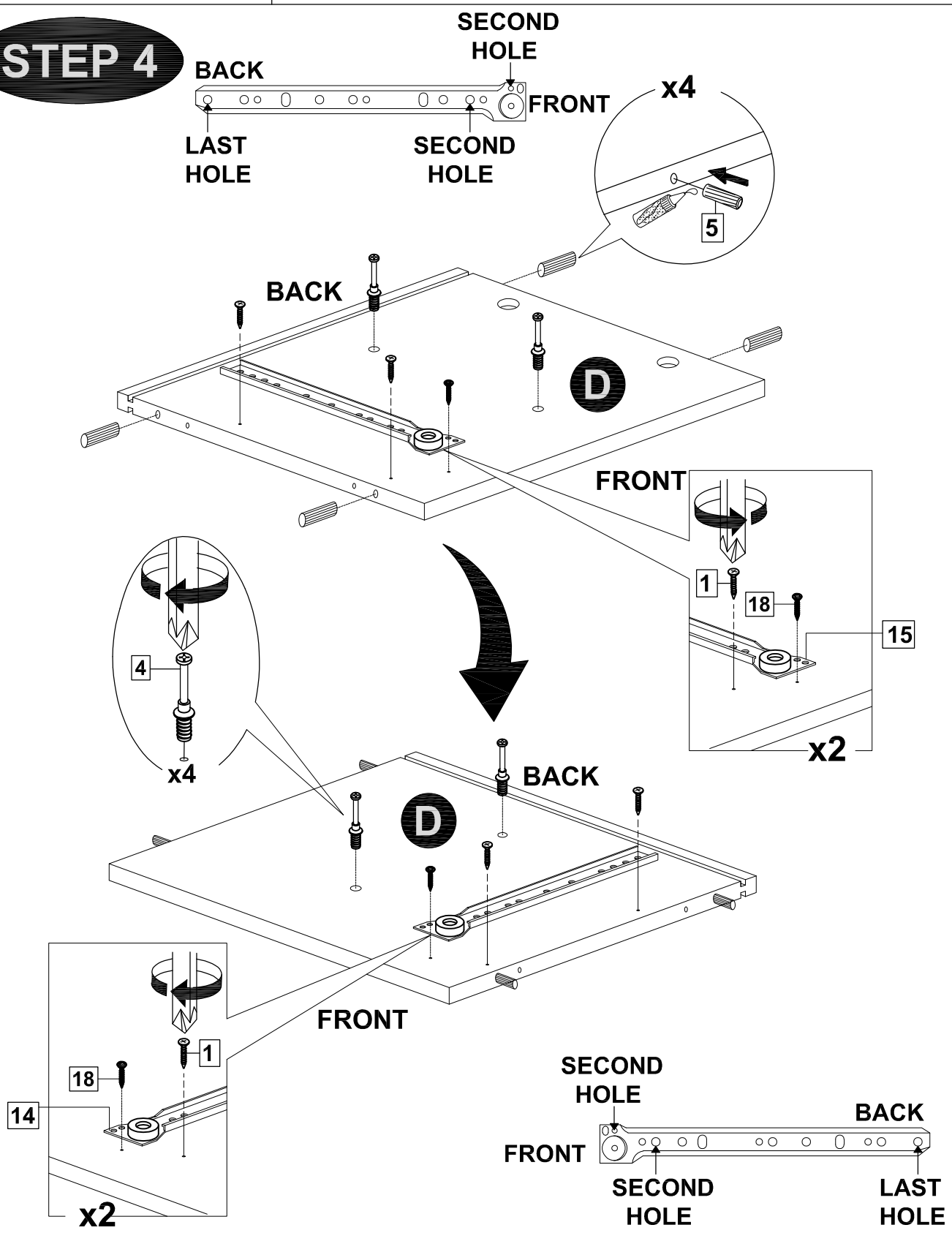
STEP 2



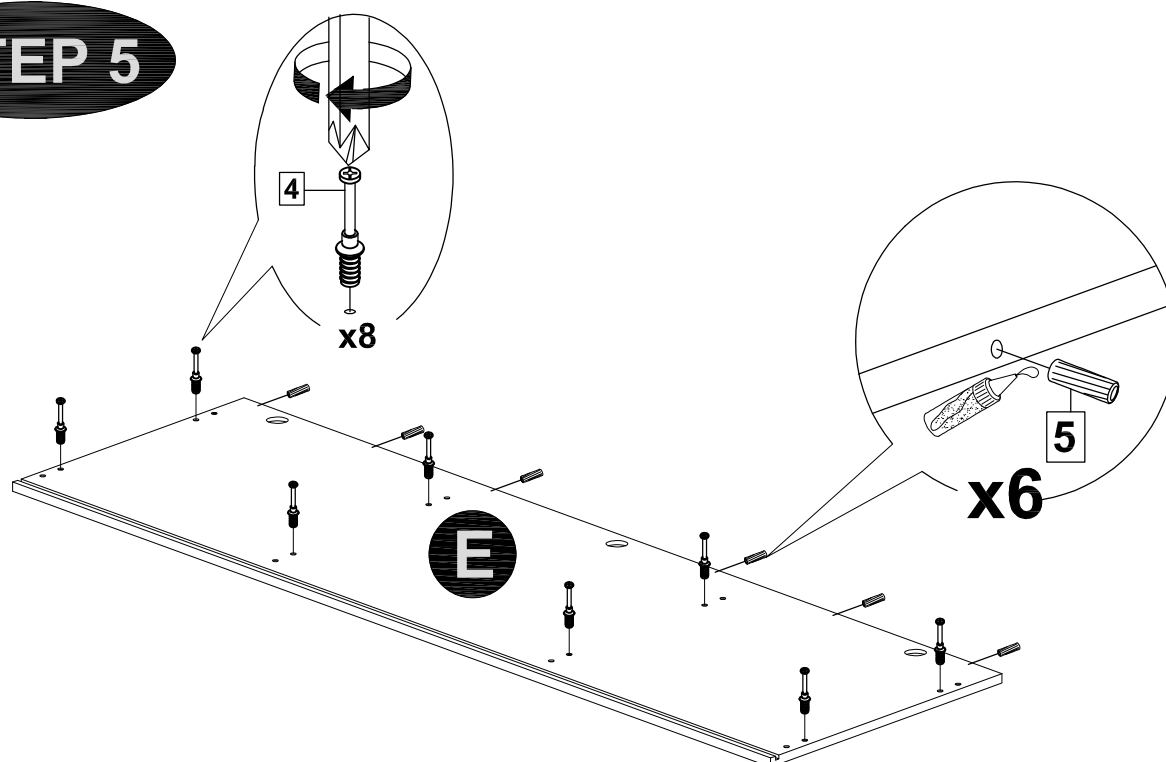
STEP 3



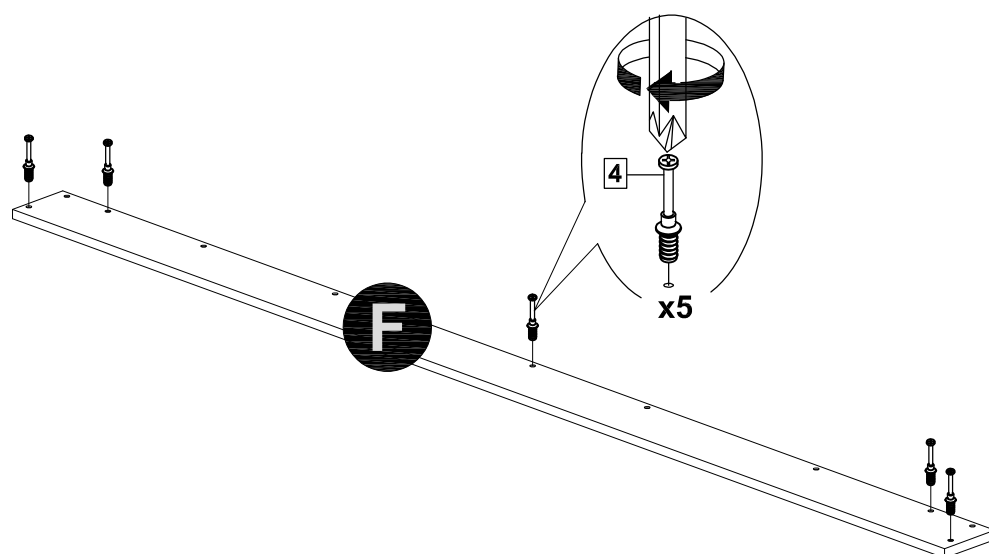
STEP 4



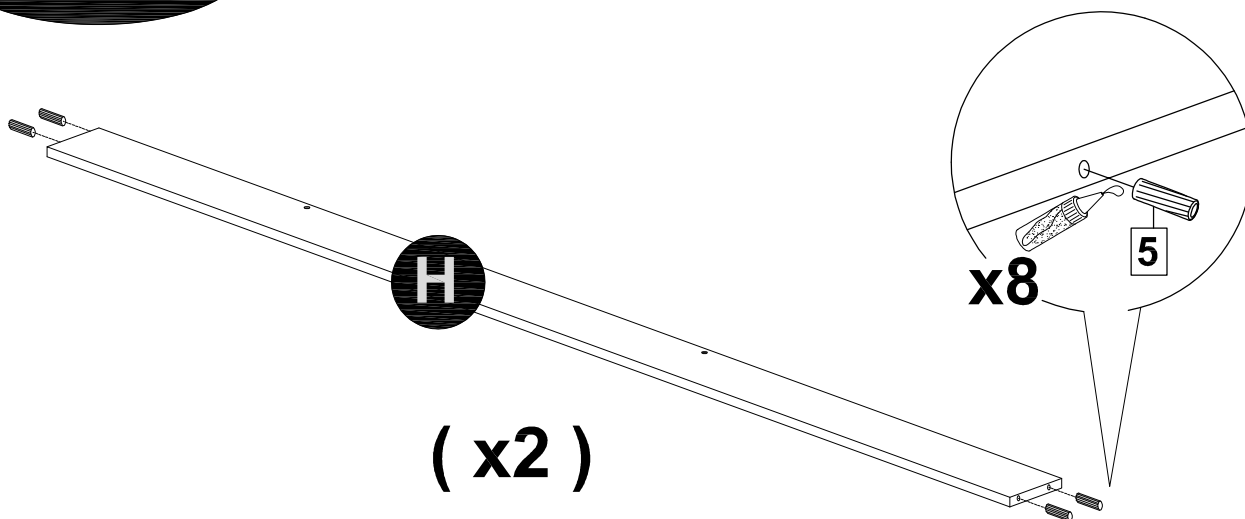
STEP 5



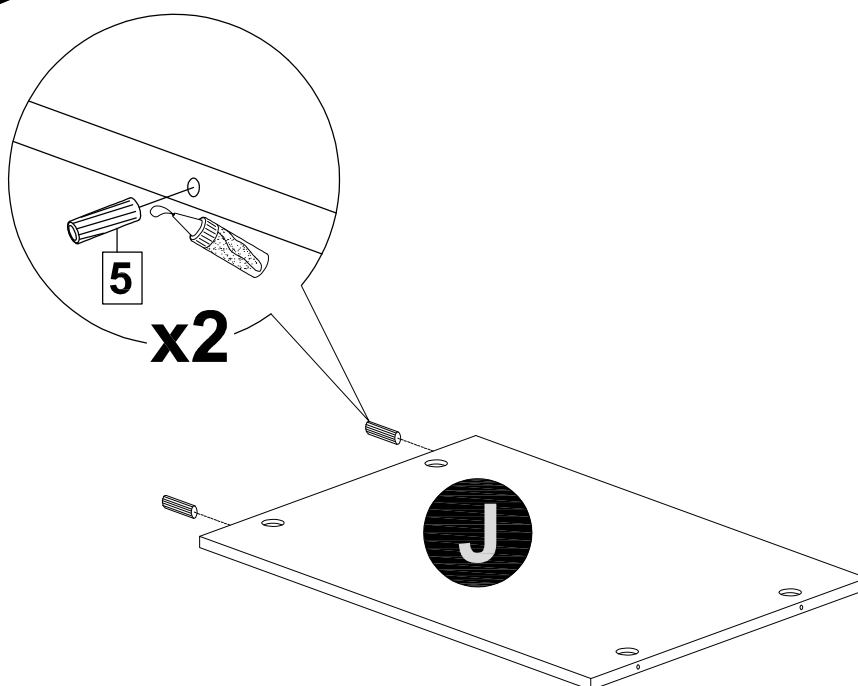
STEP 6



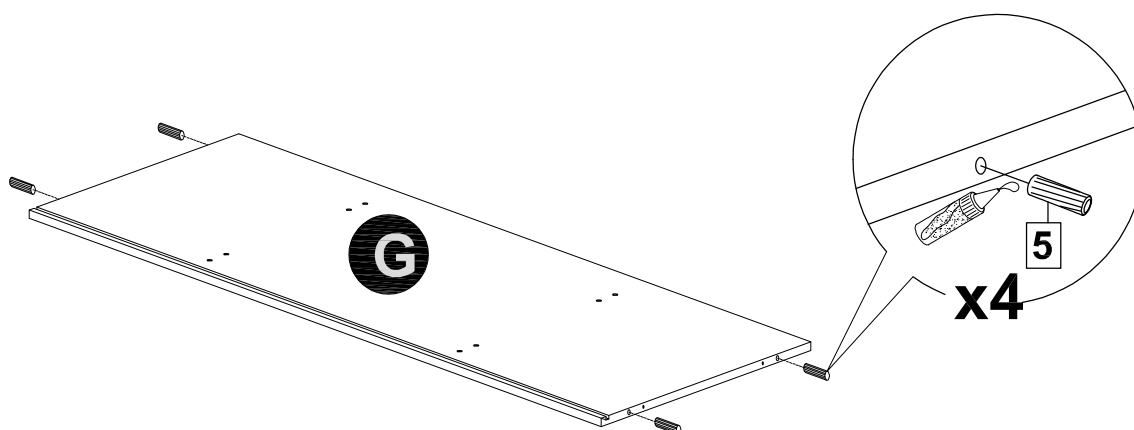
STEP 7



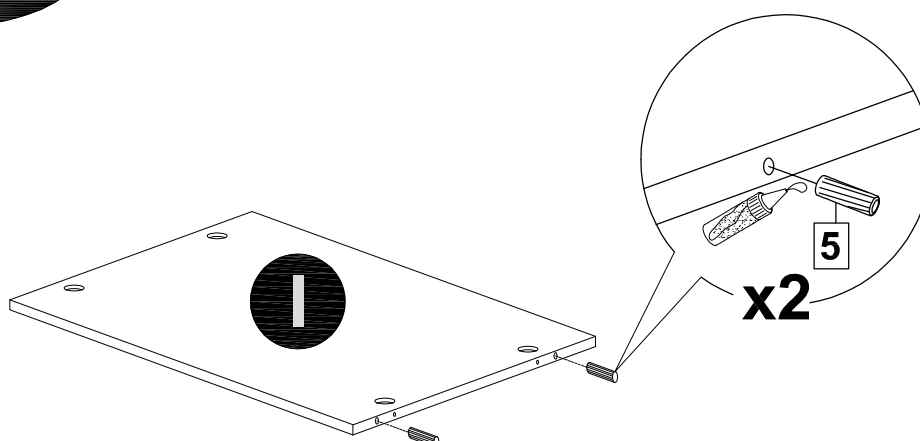
STEP 8



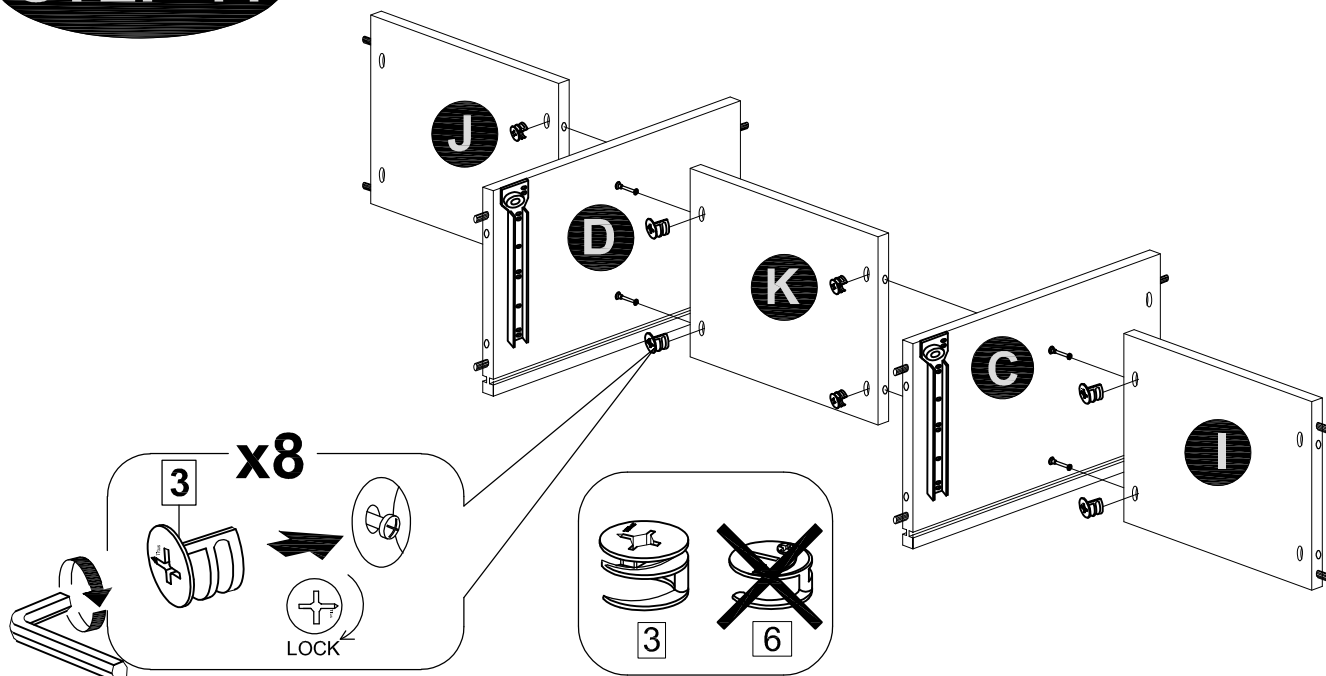
STEP 9



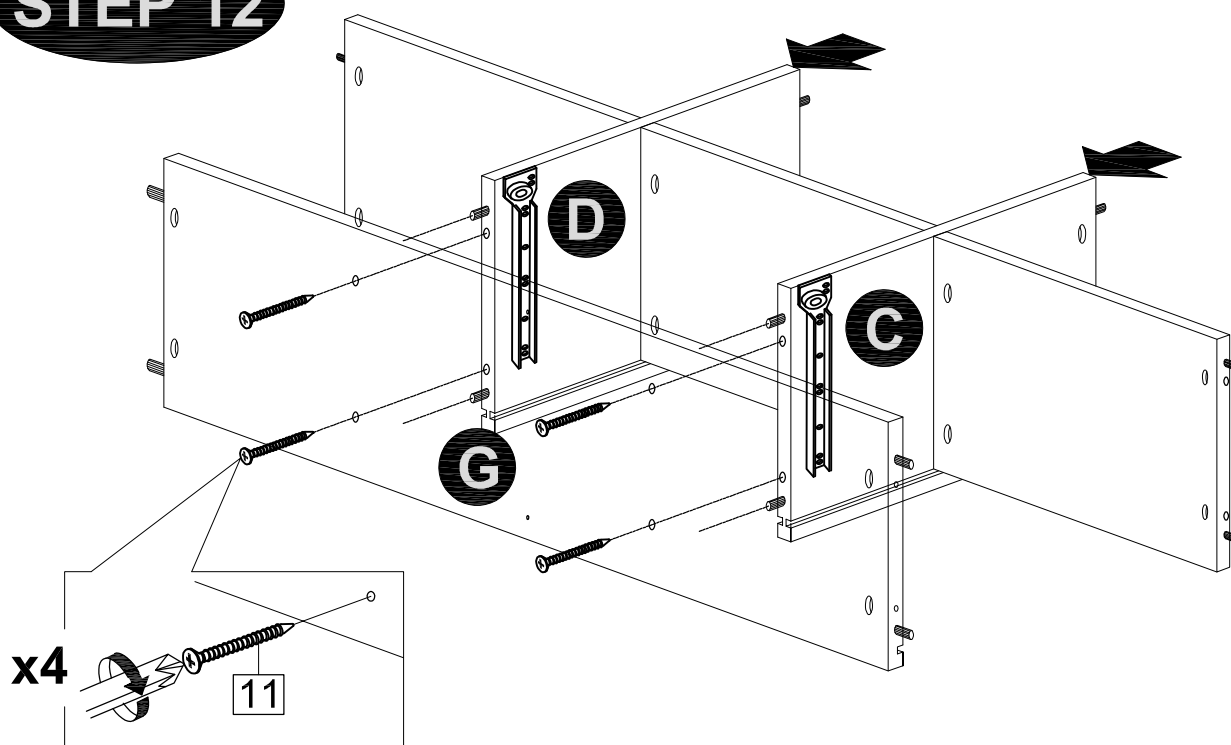
STEP 10



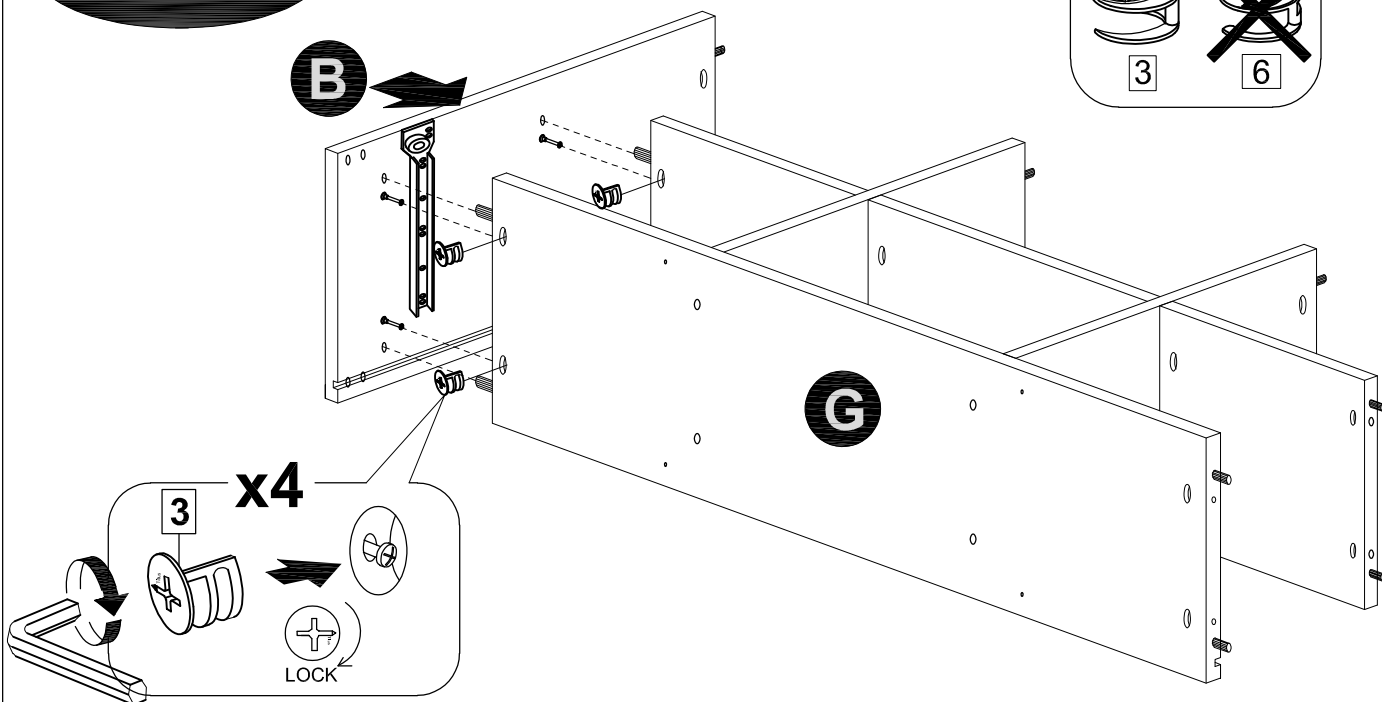
STEP 11



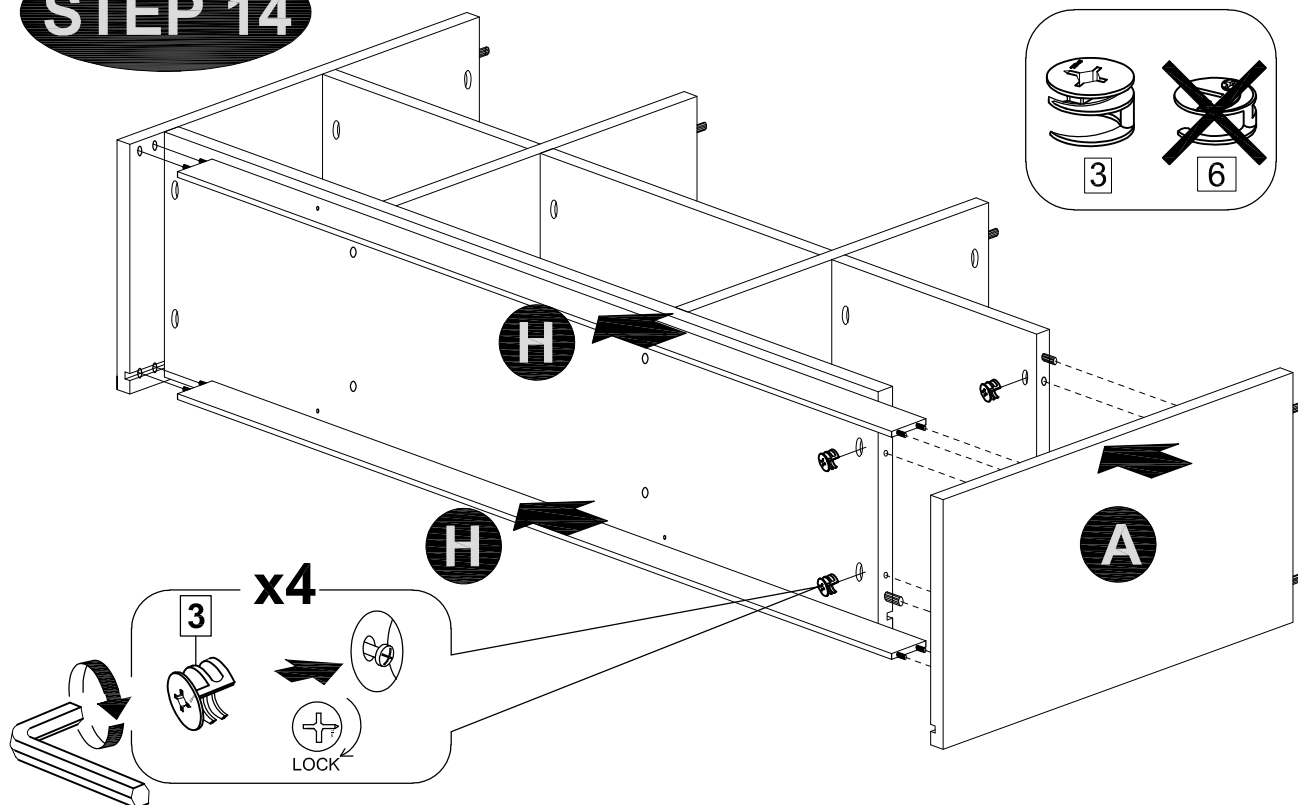
STEP 12



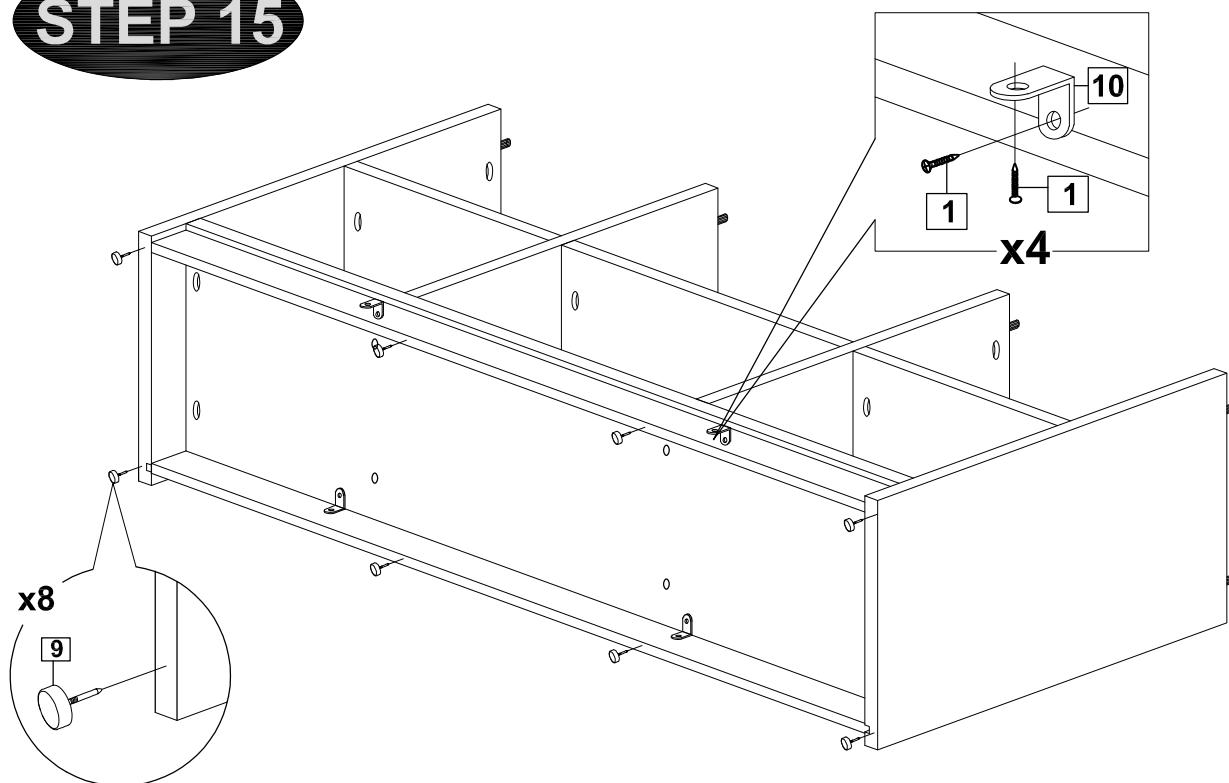
STEP 13



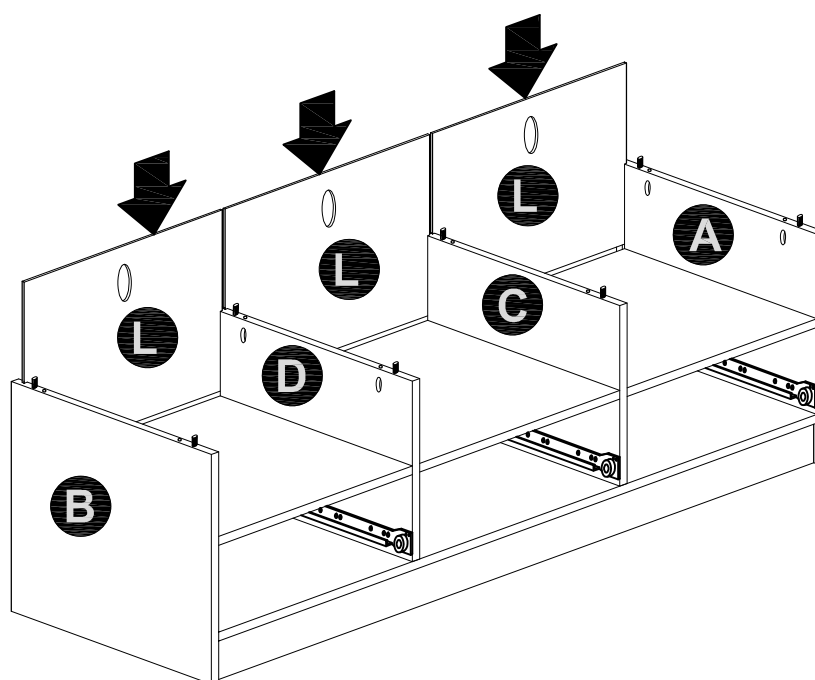
STEP 14



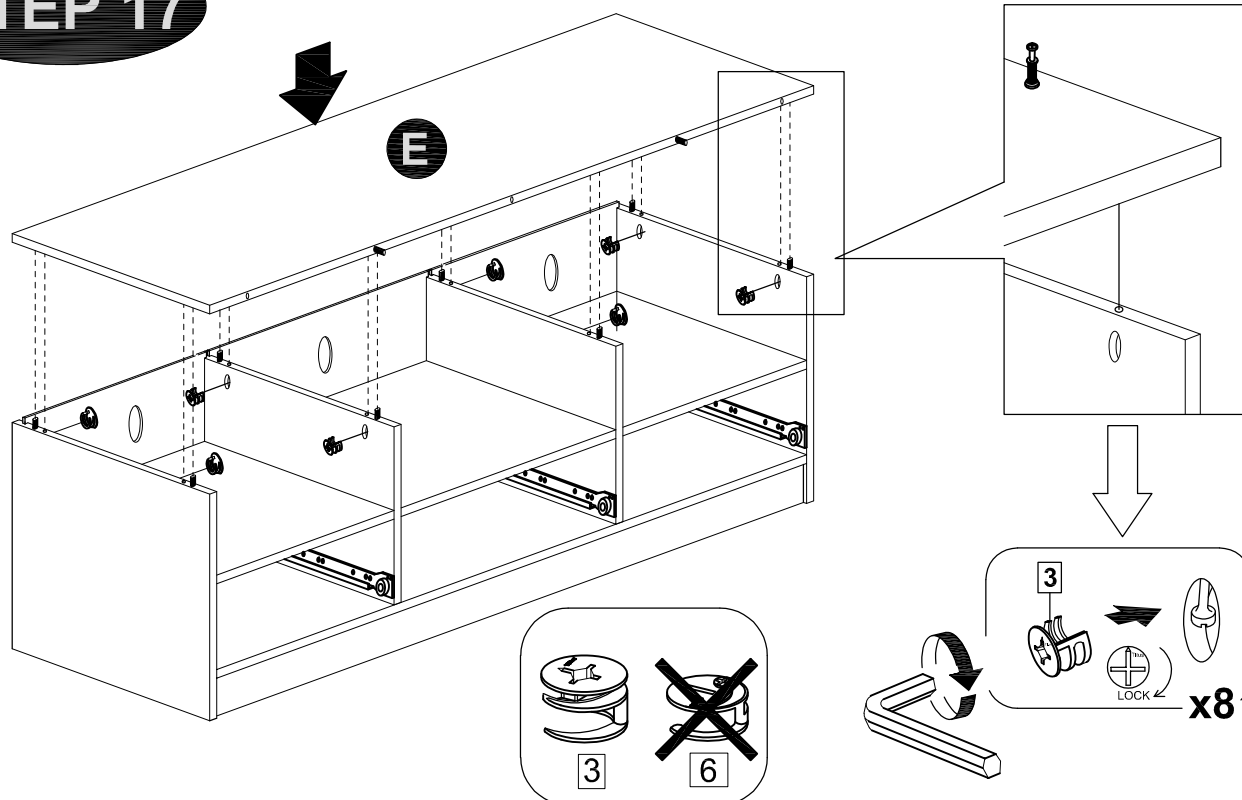
STEP 15



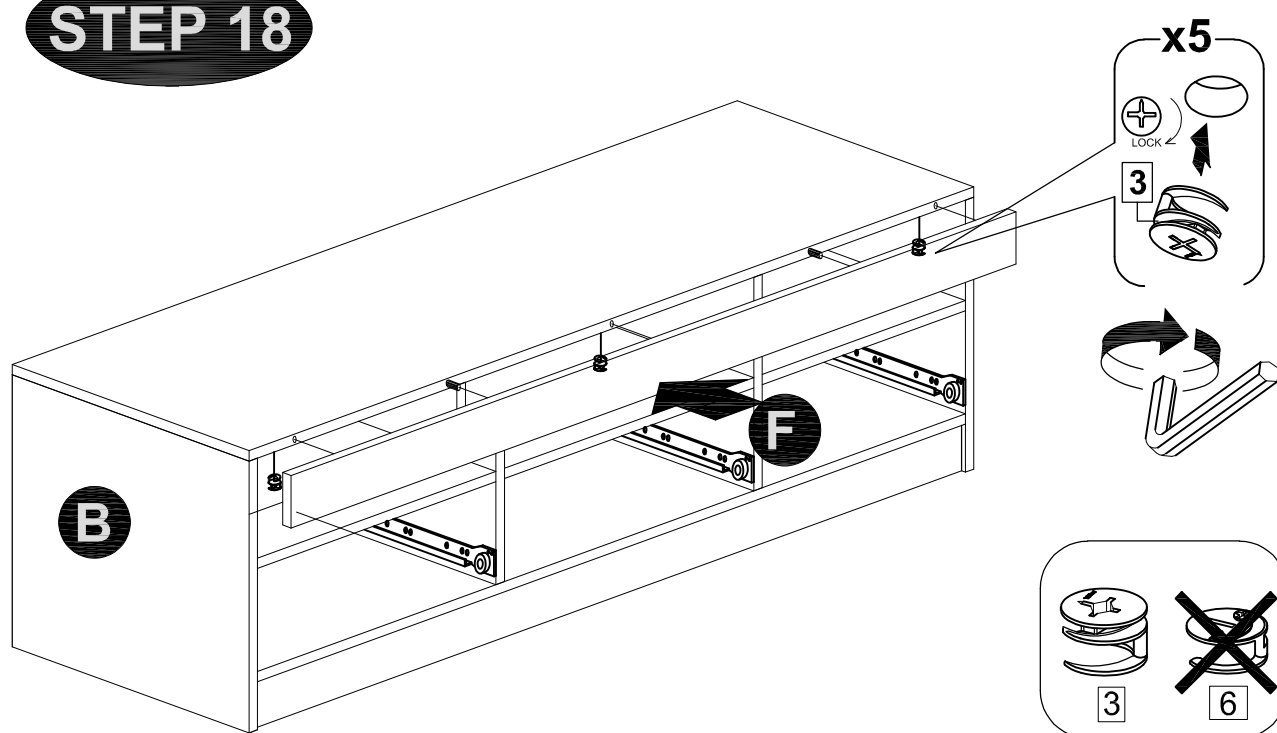
STEP 16



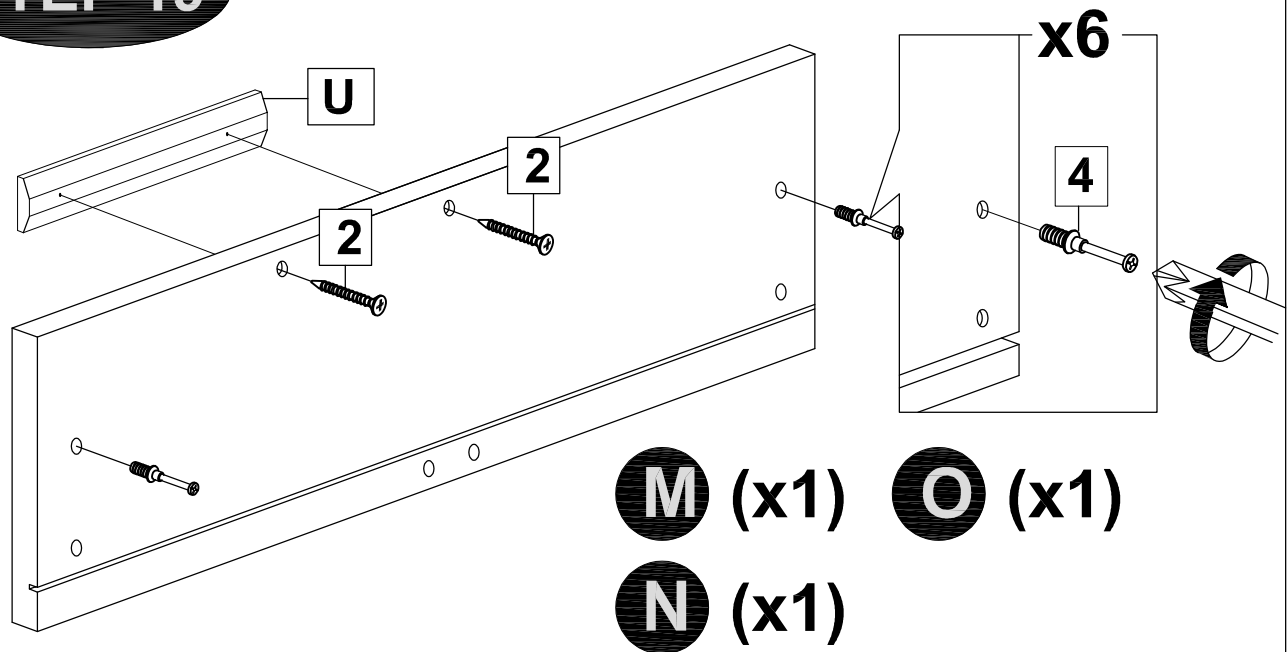
STEP 17



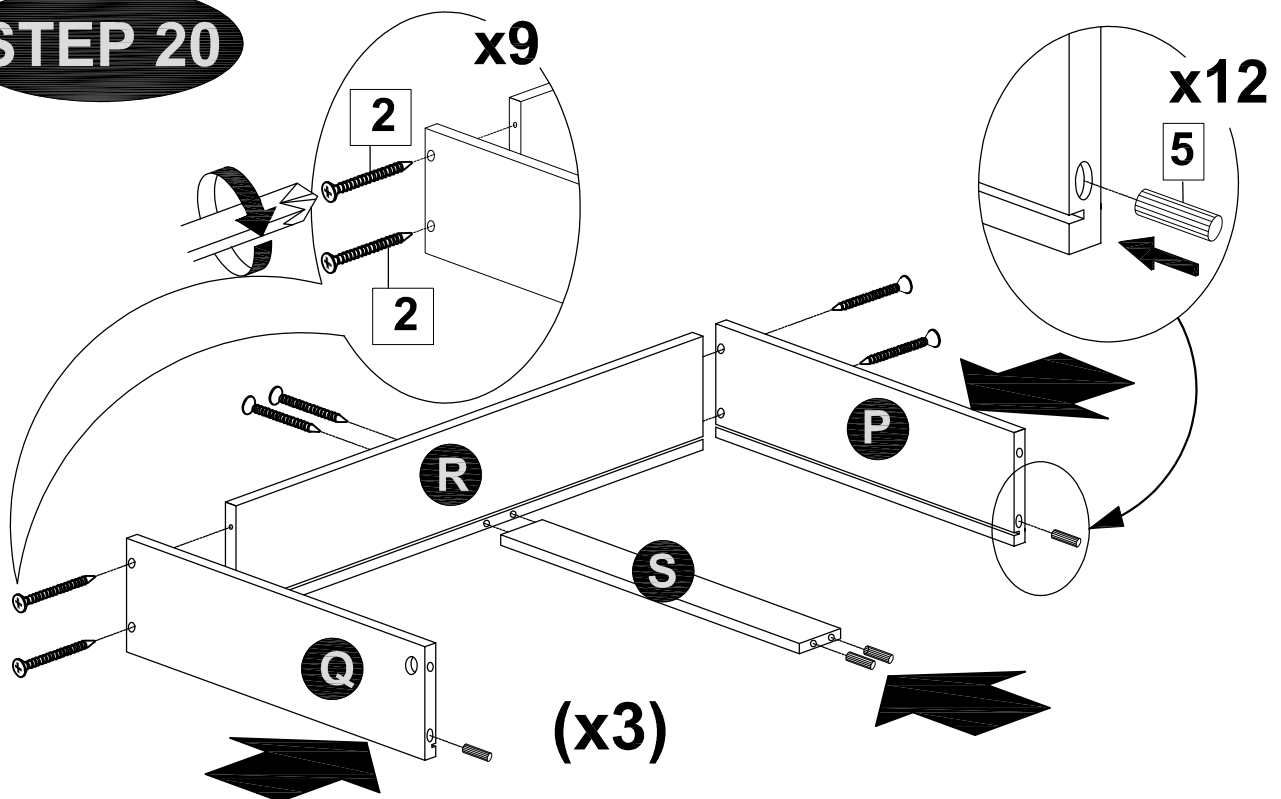
STEP 18



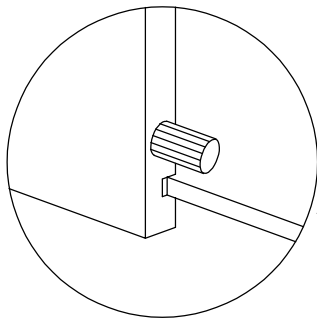
STEP 19



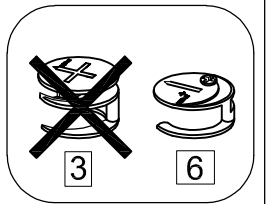
STEP 20



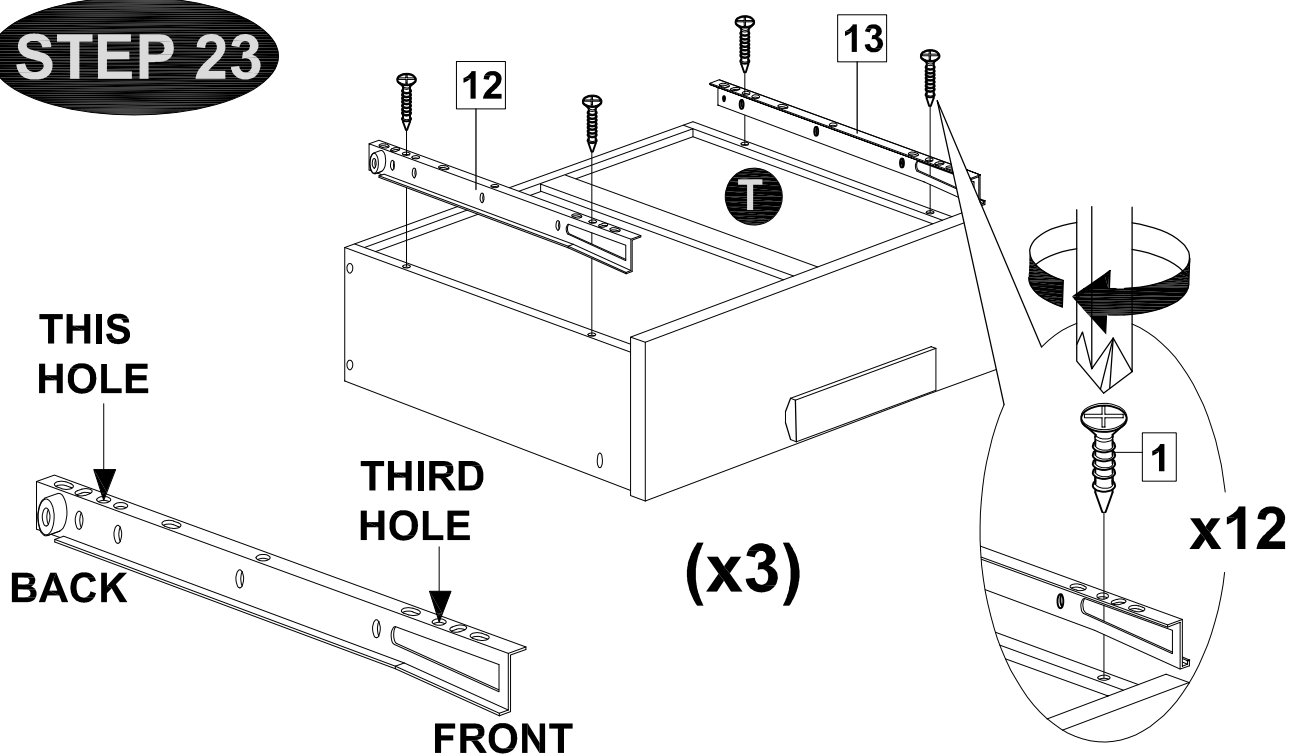
STEP 21



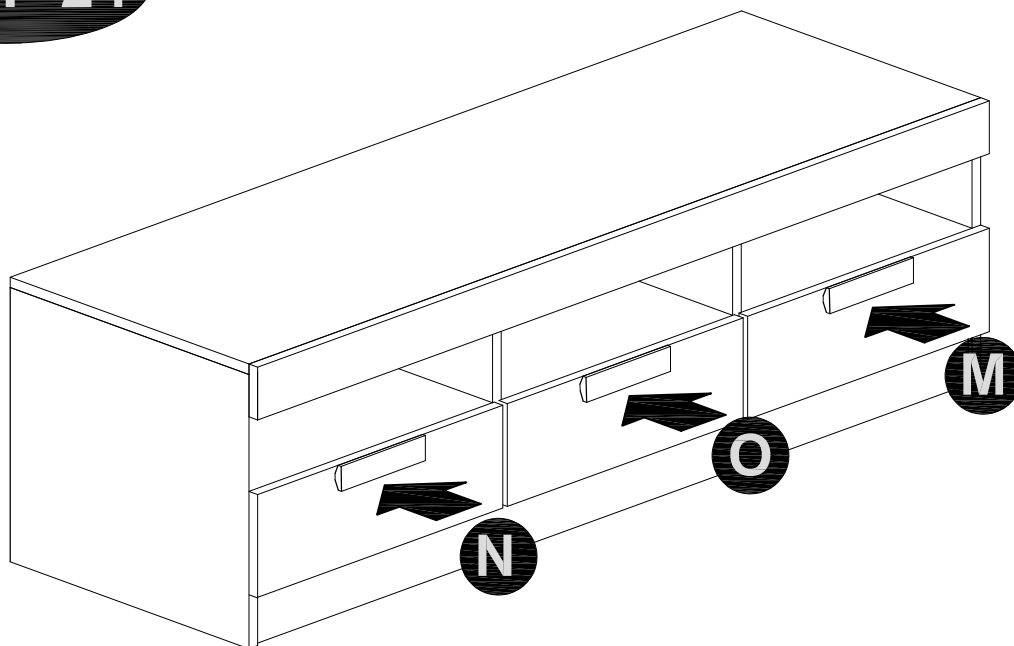
STEP 22



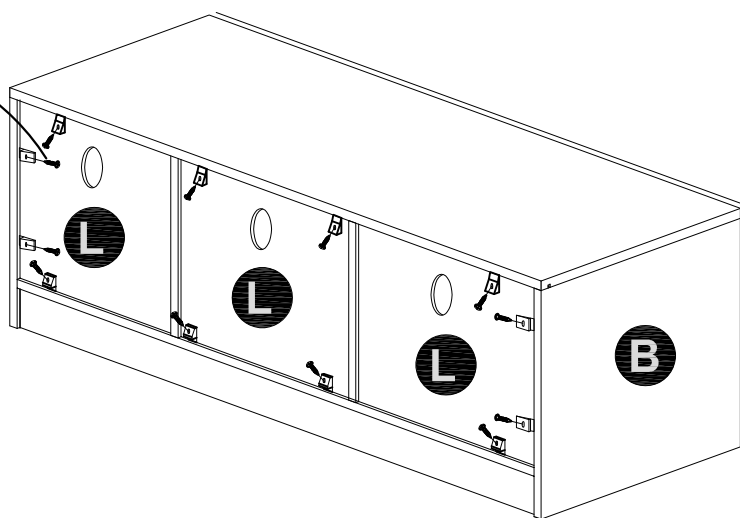
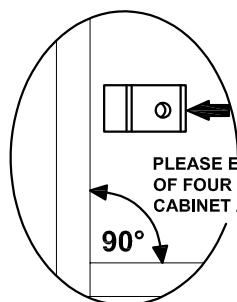
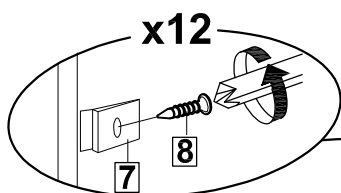
STEP 23



STEP 24



STEP 25



STEP 26

