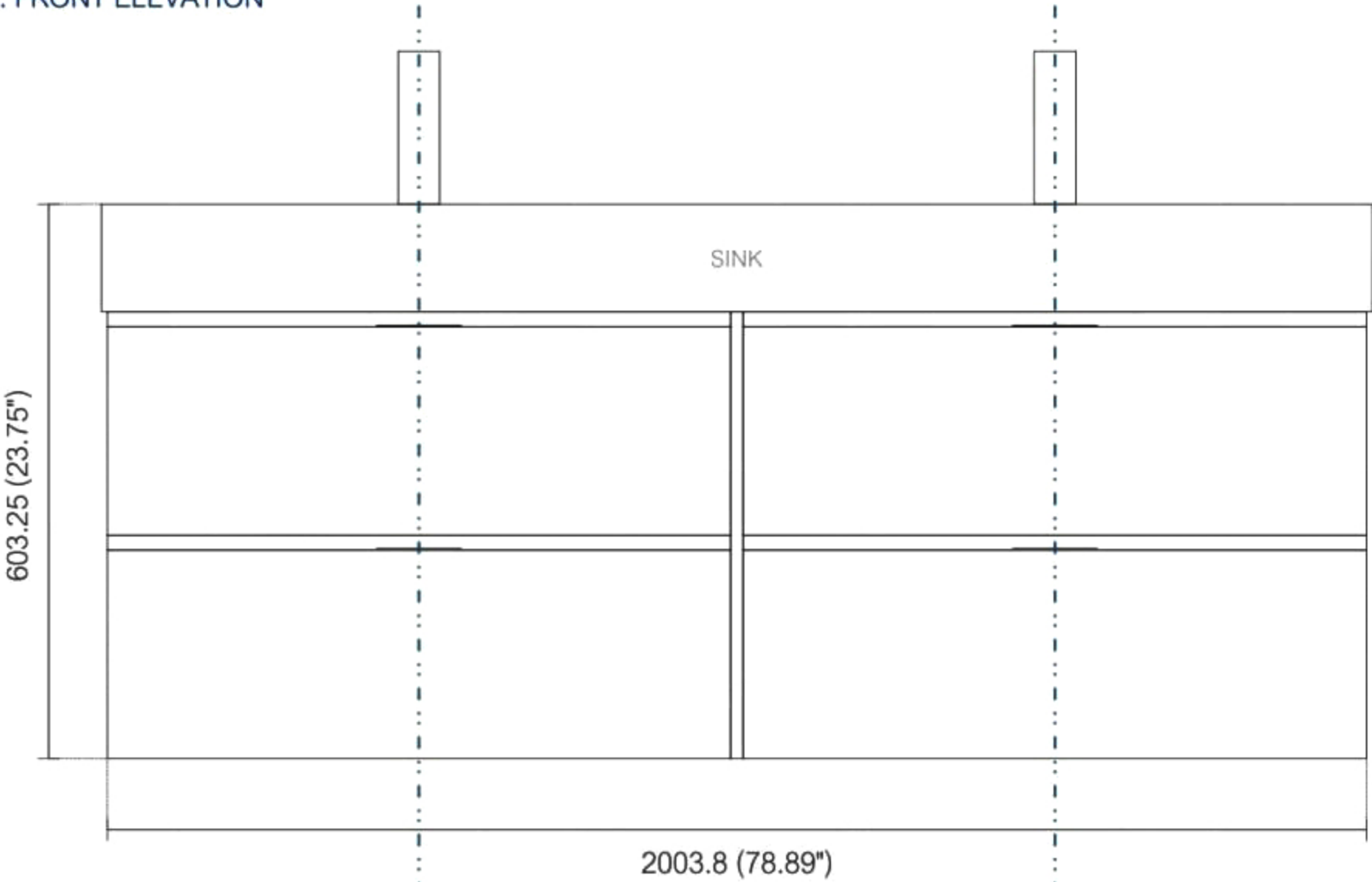


Dimensions:	width	depth	height
inches	79"	18.5"	23.75"
mm	2007	4707	603

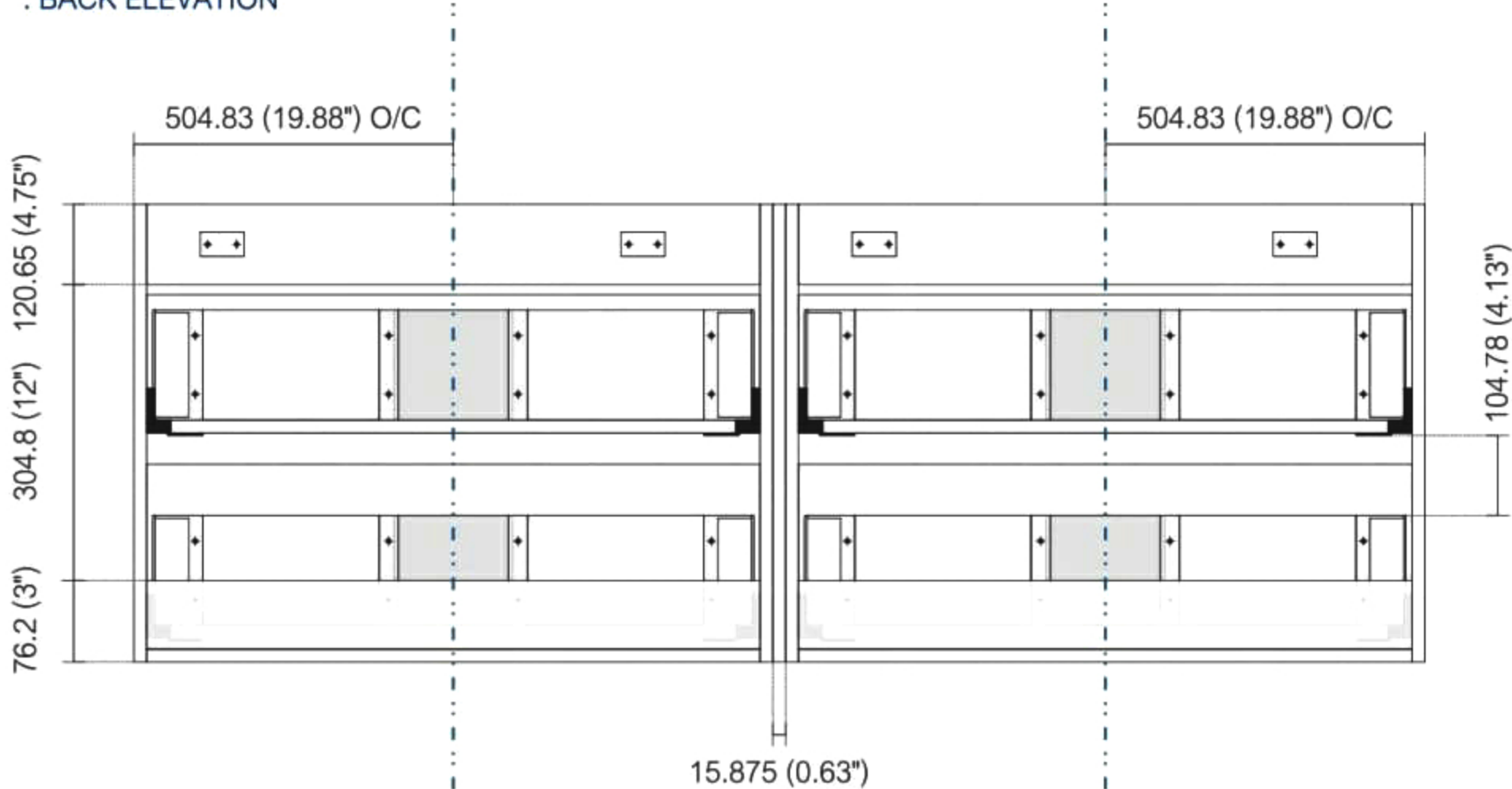
NOTE: DIMENSIONS AND TECHNICAL DETAILS ARE SUBJECT TO CHANGE WITHOUT NOTICE

Sink

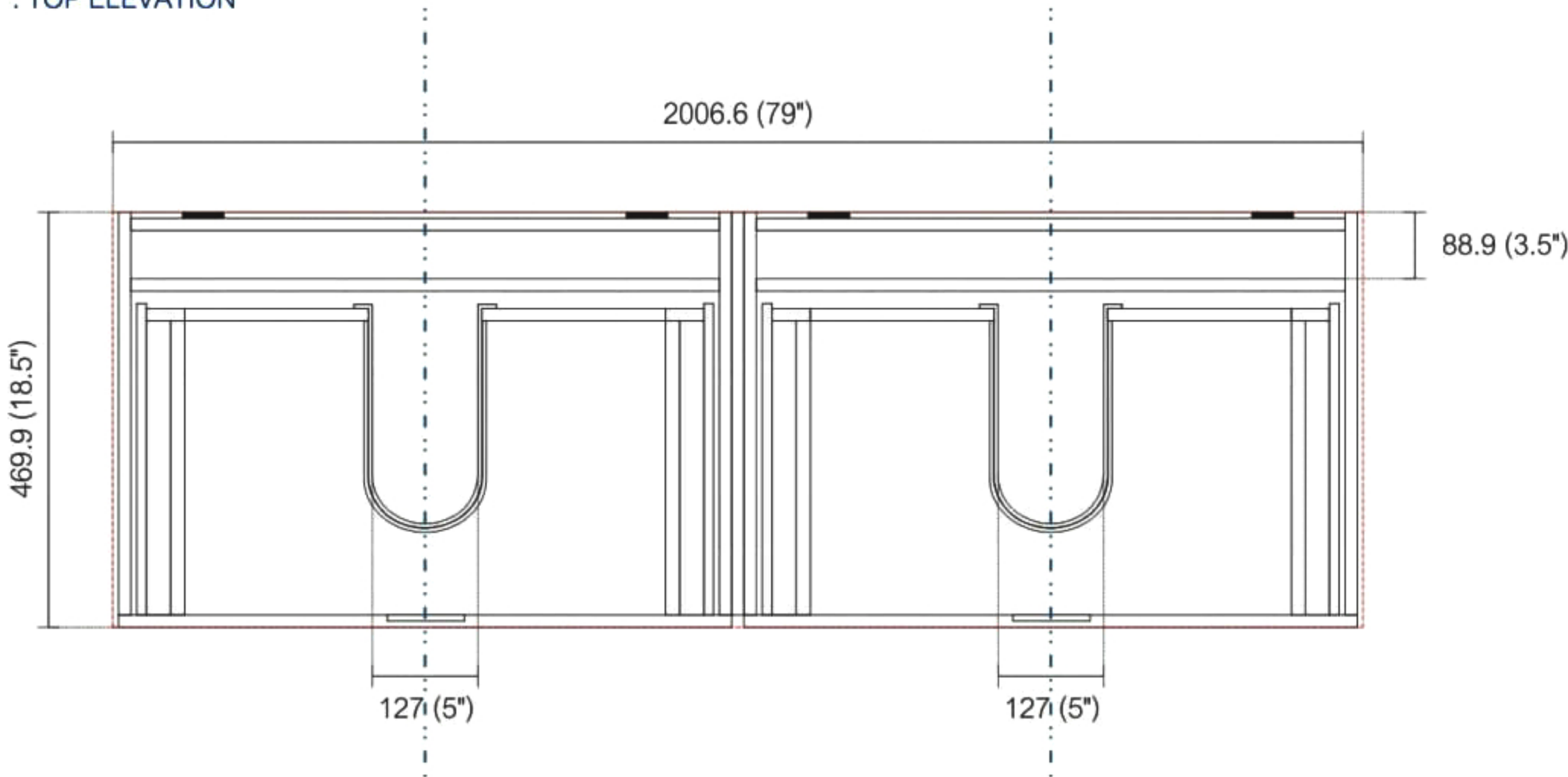
. FRONT ELEVATION



. BACK ELEVATION



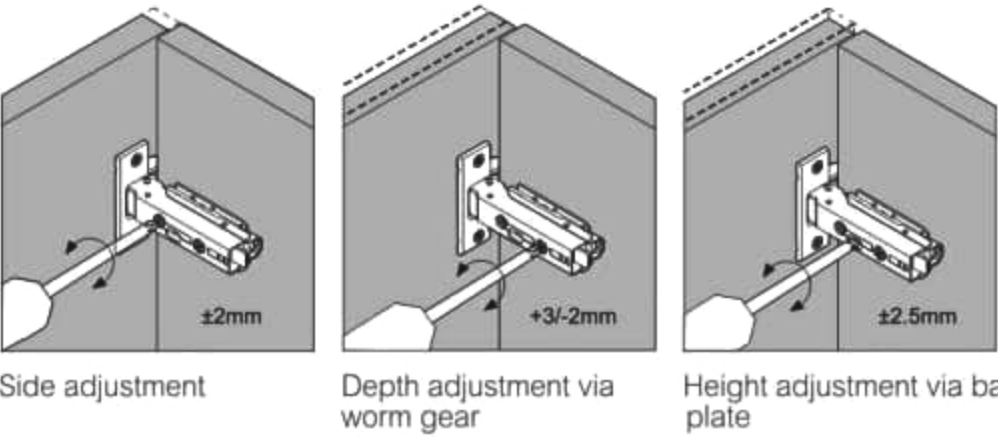
. TOP ELEVATION



. Adjustments

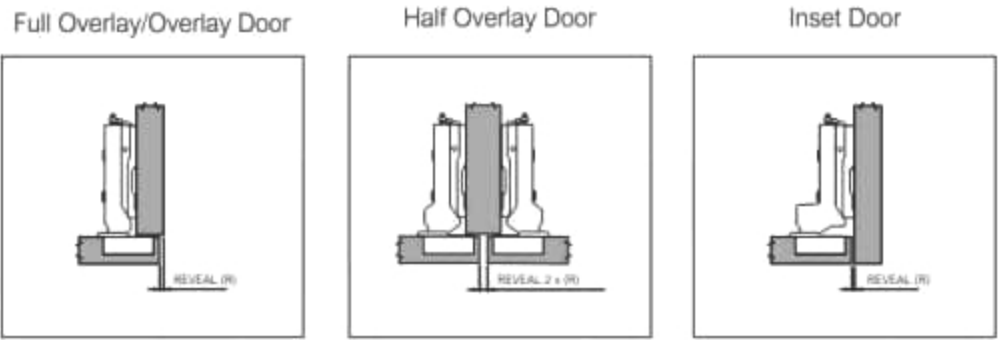
The options for height adjustment depend on the type of base plate. All adjustments can be made independent of one another.

For depth adjustment, select base plates have worm gear adjustment access through the hinge arm.



. Reveal

The reveal (R) is the distance required between two doors or between the door and side wall of the cabinet to allow sufficient space for opening the door. The required reveal width (R) depends on the thickness of the door. Most cabinet makers prefer a reveal (R) of between 3mm and 6mm.



SINK

NOTE: DIMENSIONS AND TECHNICAL DETAILS ARE SUBJECT TO CHANGE WITHOUT NOTICE

Dimensions:	width	length	height	depth
inches	16.0"	16.0"	4.0"	3.38"
mm	406.4	406.4	101.6	85.73

Dimensions:	width	length	height	depth
inches	18.0"	10.25"	4.0"	3.38"
mm	457.2	257.18	101.6	85.73

Dimensions:	width	length	height	depth
inches	23.63"	18.5"	4.0"	4.0"
mm	600.08	469.9	101.6	101.6

Dimensions:	width	length	height	depth
inches	29.5"	18.5"	4.0"	4.0"
mm	749.3	469.9	101.6	101.6

Dimensions:	width	length	height	depth
inches	35.75"	18.5"	4.0"	4.0"
mm	908.05	469.9	101.6	101.6

Dimensions:	width	length	height	depth
inches	39.5"	18.5"	4.0"	4.0"
mm	1003.3	469.9	101.6	101.6

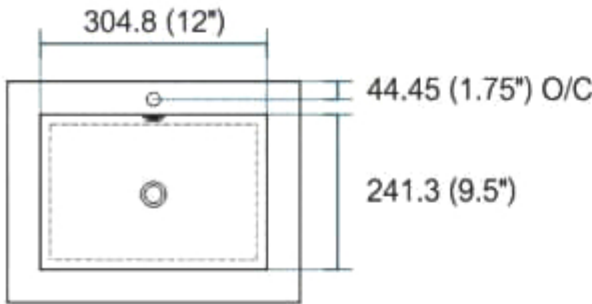
Dimensions:	width	length	height	depth
inches	47.25"	18.5"	4.0"	4.0"
mm	1200.15	469.9	101.6	101.6

Dimensions:	width	length	height	depth
inches	59"	18.5"	4.0"	4.0"
mm	1498.6	469.9	101.6	101.6

Dimensions:	width	length	height	depth
inches	59"	18.5"	4.0"	3.75"
mm	1498.6	469.9	101.6	95.25

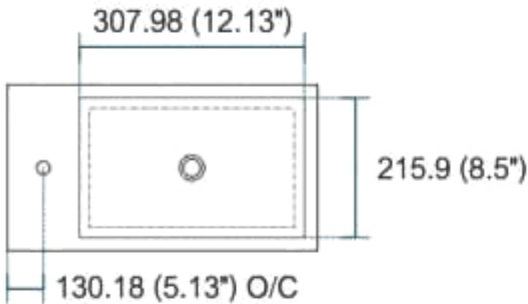
Dimensions:	width	length	height	depth
inches	71.63"	18.5"	4.0"	4.0"
mm	1819.28	469.9	101.6	101.6

Dimensions:	width	length	height	depth
inches	79"	18.5"	4.0"	4.0"
mm	2006.6	469.9	101.6	101.6



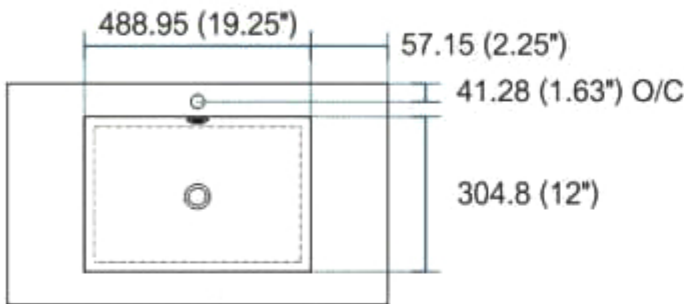
SINK

Thickness: 9.53 (0.38")



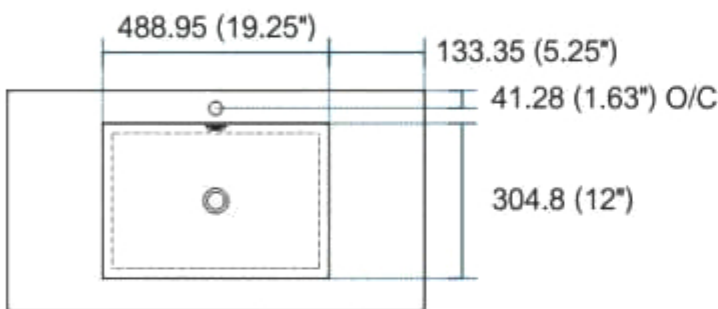
SINK

Thickness: 9.53 (0.38")



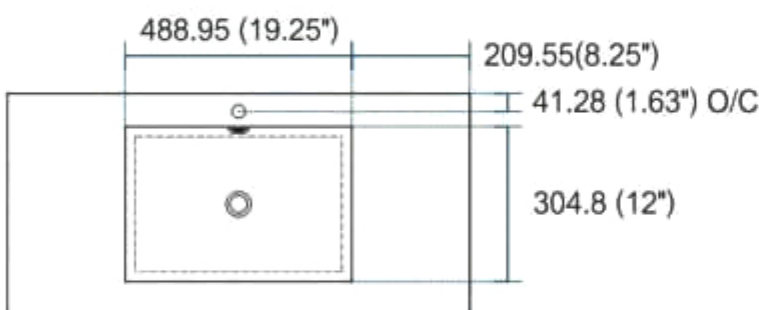
SINK

Thickness: 9.53 (0.38")



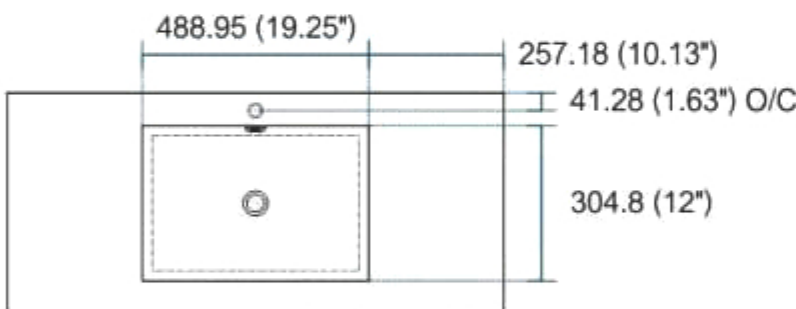
SINK

Thickness: 9.53 (0.38")



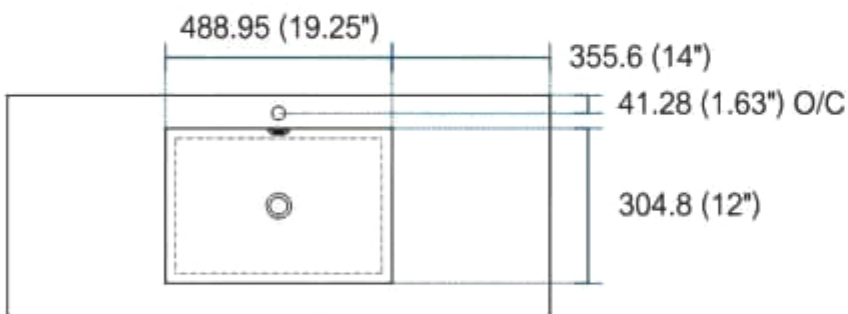
SINK

Thickness: 9.53 (0.38")



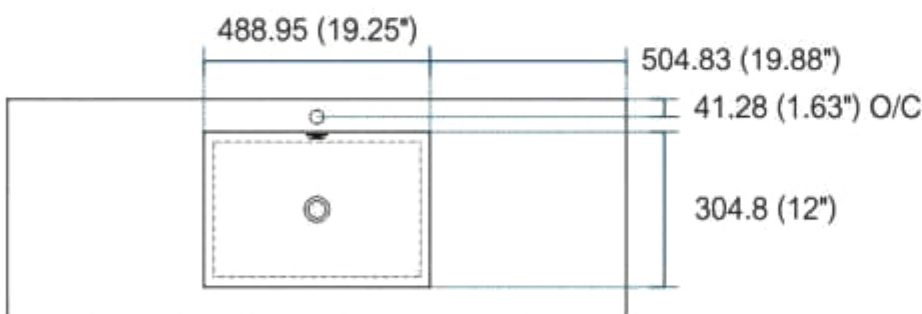
SINK

Thickness: 9.53 (0.38")



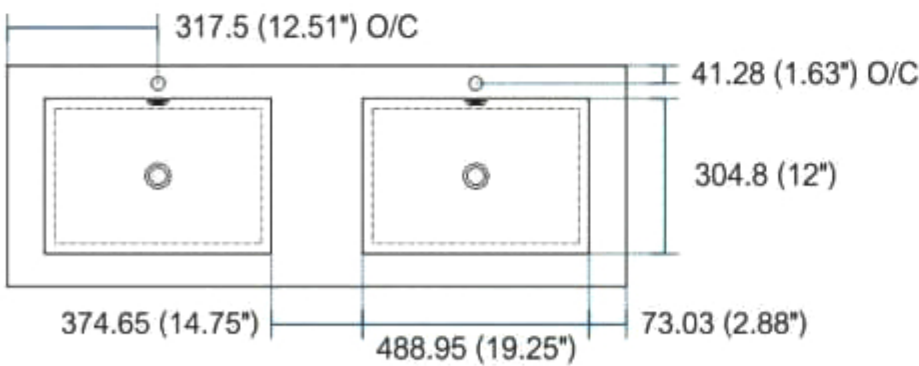
SINK

Thickness: 9.53 (0.38")



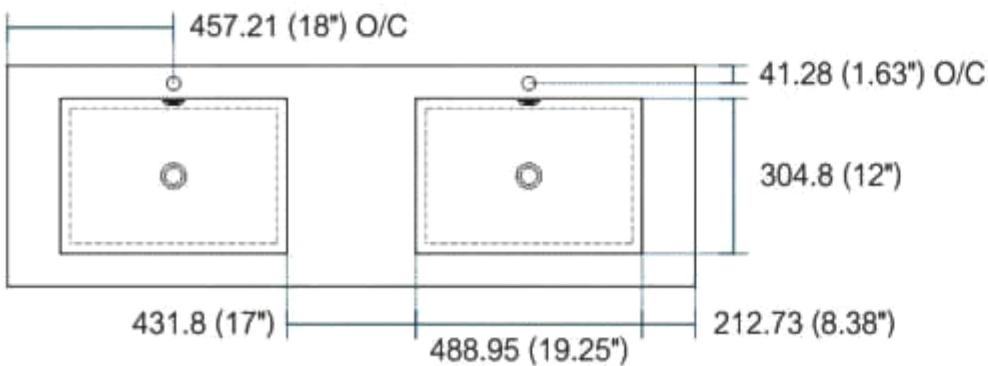
SINK

Thickness: 9.53 (0.38")



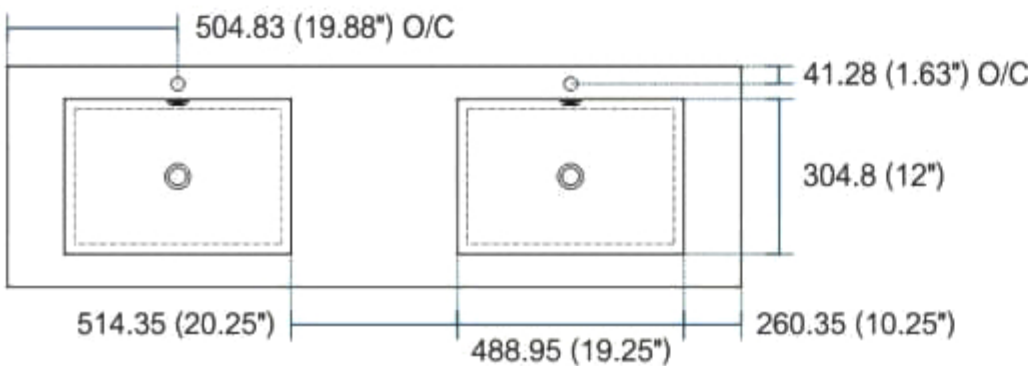
SINK

Thickness: 9.53 (0.38")



SINK

Thickness: 9.53 (0.38")



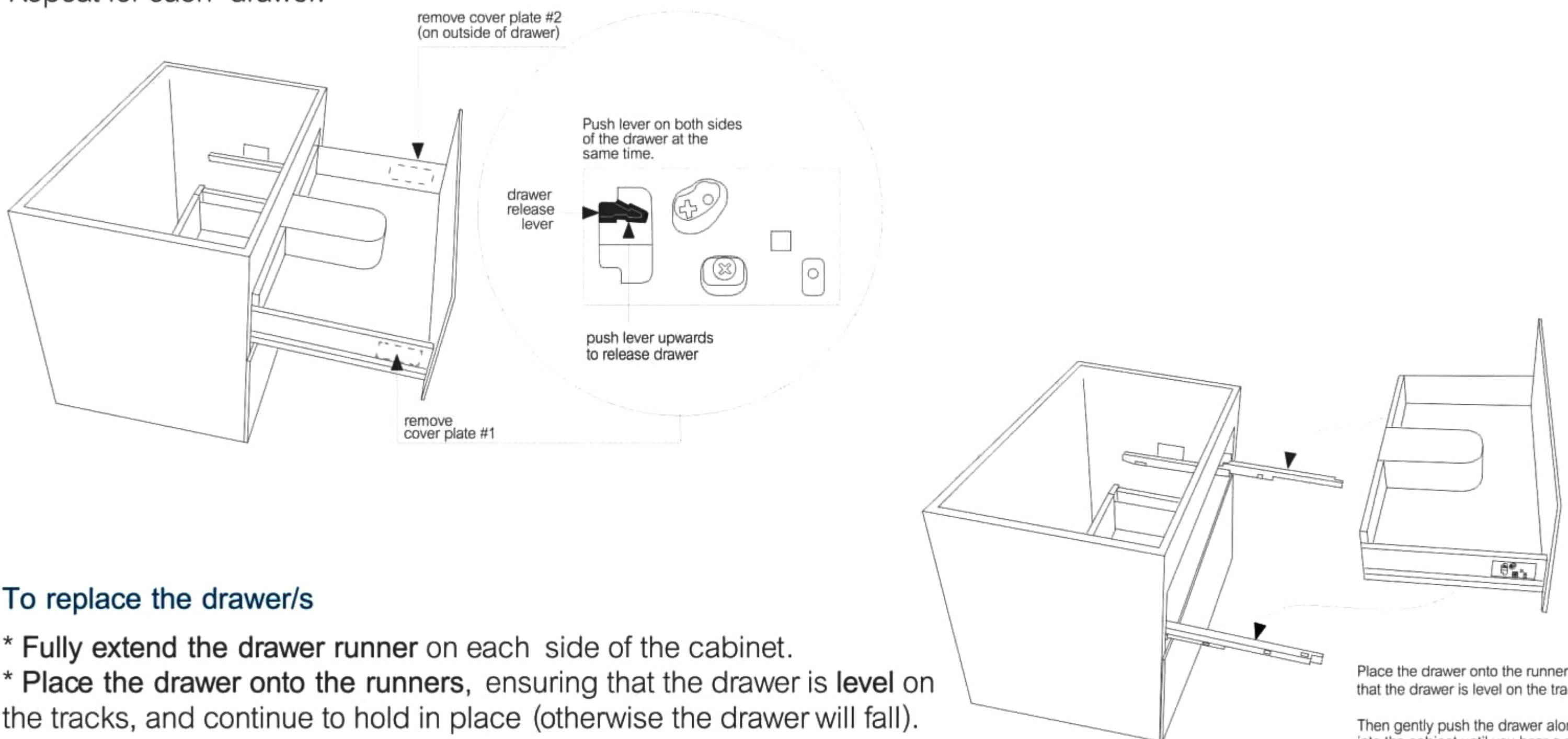
SINK

Thickness: 9.53 (0.38")

Vanity cabinet | removing+adjustment drawers

To remove the drawer/s

- * Extend the drawer
- * Each drawer has a **plastic cover plate** on each side of the drawer (#1 and #2)
- * **Remove both cover plates** (#1 and #2) to expose a small **drawer release lever** under each plate: see detail
- * To release and remove the drawer, simultaneously **push the drawer release levers upwards** (both sides at same time) and slide/lift the drawer away from the tracks. Repeat for each drawer.

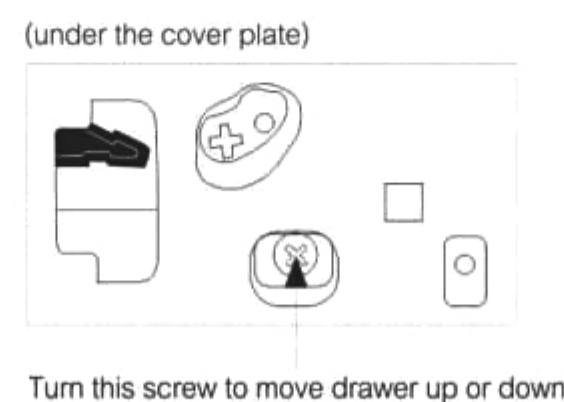


To replace the drawer/s

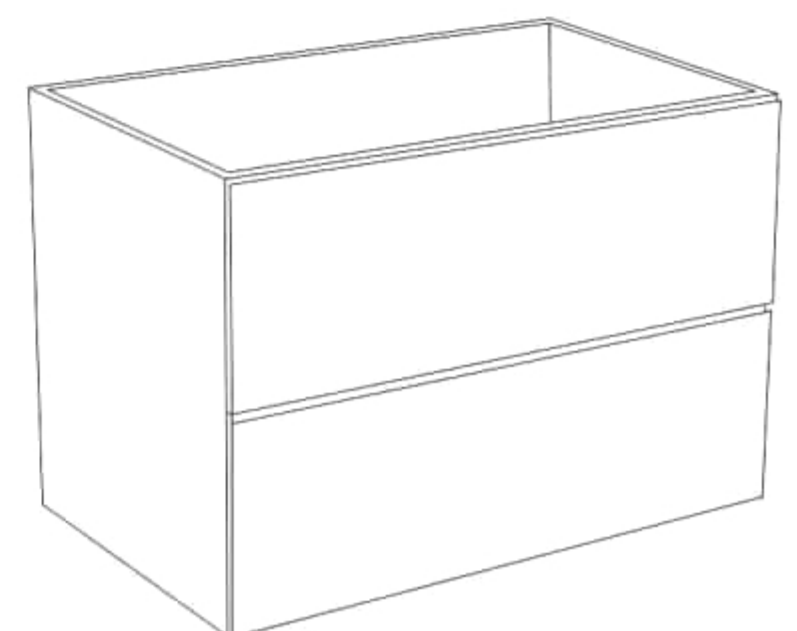
- * Fully extend the drawer runner on each side of the cabinet.
- * **Place the drawer onto the runners**, ensuring that the drawer is **level** on the tracks, and continue to hold in place (otherwise the drawer will fall).
- * Keeping the drawer level, gently **push the drawer along the runners into the cabinet until you hear a click**. This indicates that the drawer is properly locked into place on the track.
- * Once the drawer is back in place, replace the cover plates on the sides of the drawer.

To adjust the drawer/s

- * To move the drawer up or down, turn the **bottom screw** located under the cover plate on each side of the drawer.



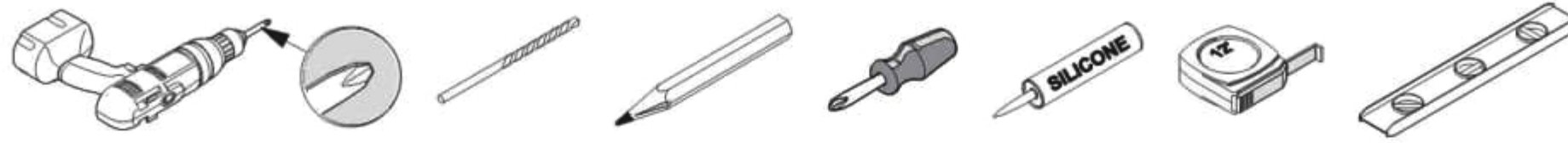
These instructions show a vanity cabinet which has two drawers. However, the instructions apply to all cabinets and all sizes of the Vanity line. The characteristics and drawer mechanisms are the **same** for all units.



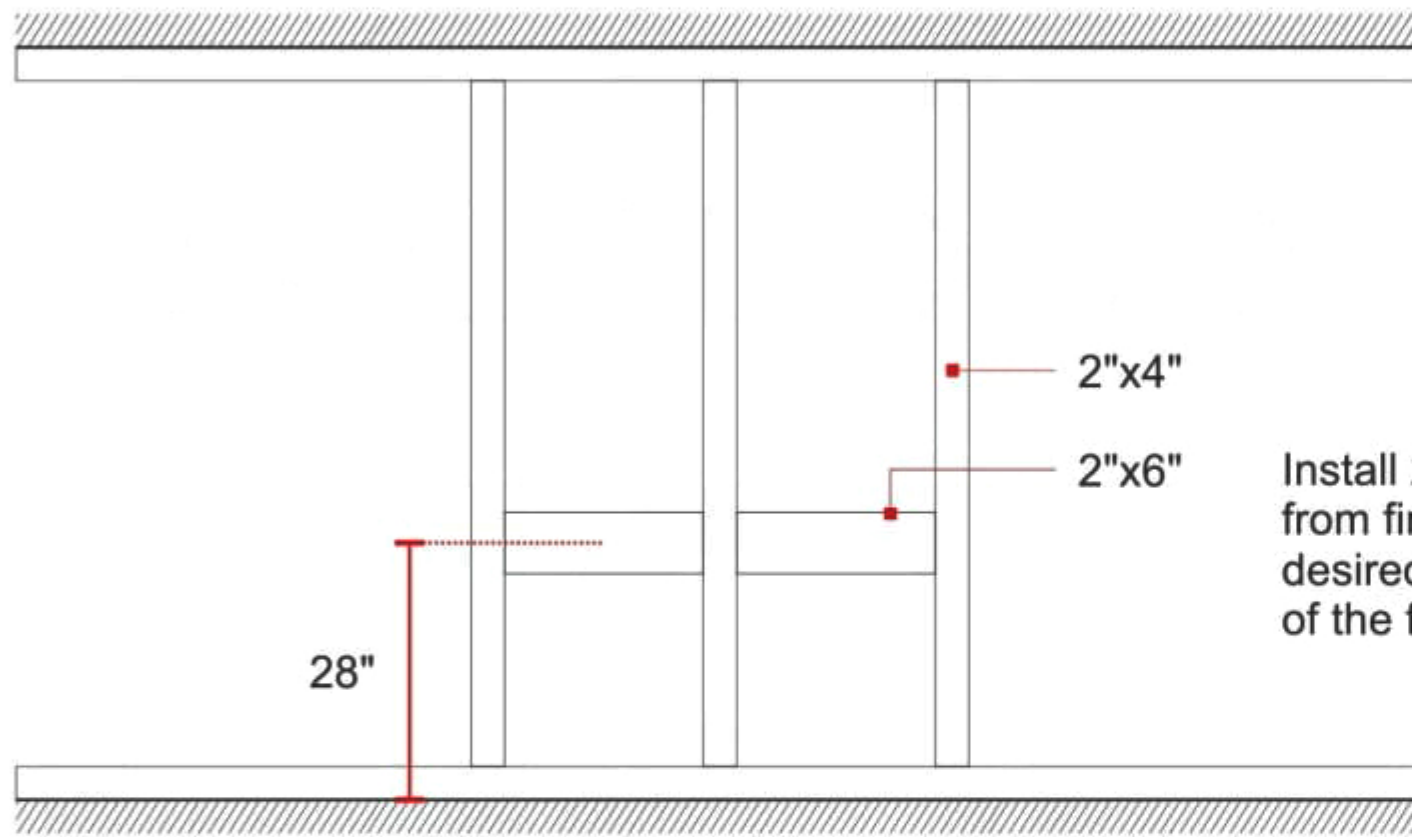
How to Install a 72" and 80" Wall-Hung Vanity

INSTALLATION GUIDE

Tools Required for Assembly



Wall Preparation

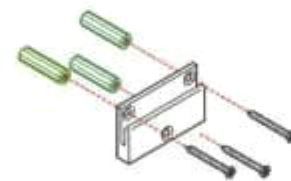


Install 2"x6" lumber between the wall studs. Suggested distance from finished floor will be 28" to the center from the floor if the desired finished height of the Vanity is 34" from the floor to the top of the finished Counter Top.

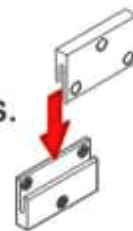
Vanity Installation

1. Remove all Drawers from the Cabinet sections.
2. Install matching wood spacers provided on one section of the vanity. Please ensure that the front spacer is installed flush with the Cabinet edge, not the drawers. **(See Figure 1)**
Use screws to attach the wood spacers to the cabinet

3. Align and level mounting Brackets according to horizontally reinforcement lumber and desired cabinet height.



4. Mount Vanity on to the wall brackets.



5. Add a dap of silicone to the corners of the Cabinet **(See Figure 2)**.
6. Gently position and align Counter Top Sink onto Vanity.

Figure 1

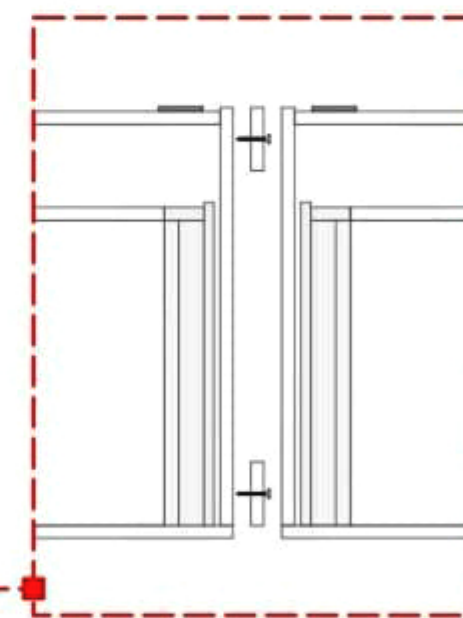
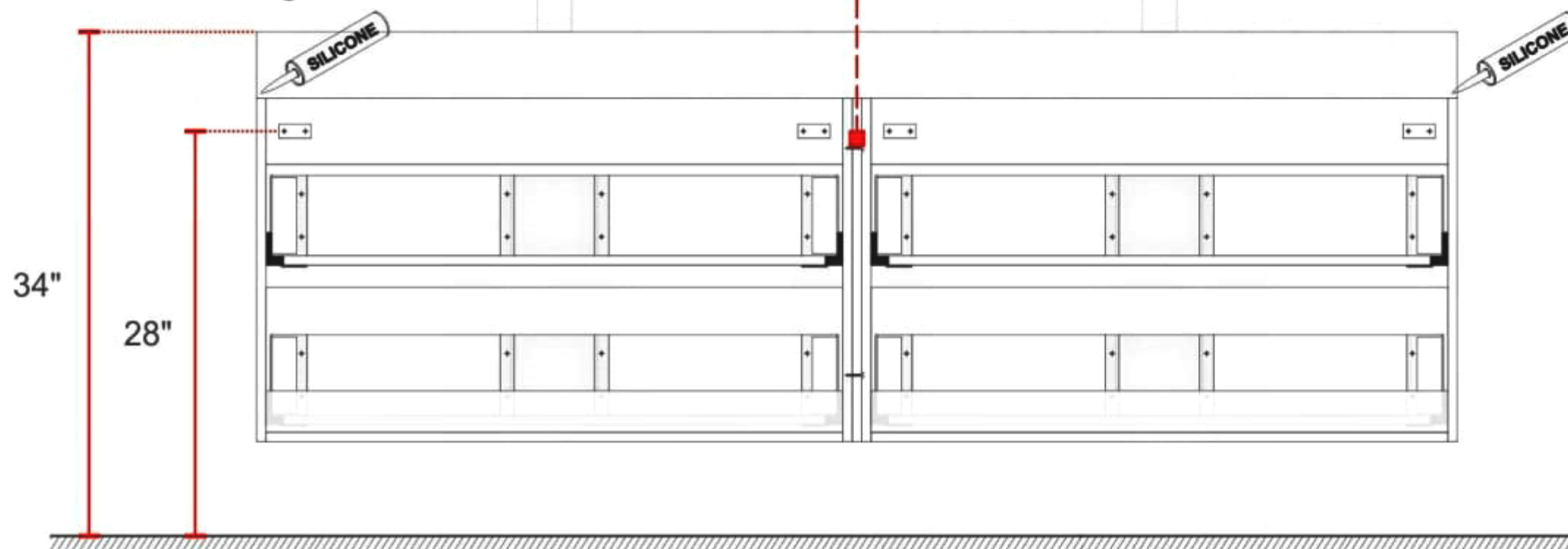
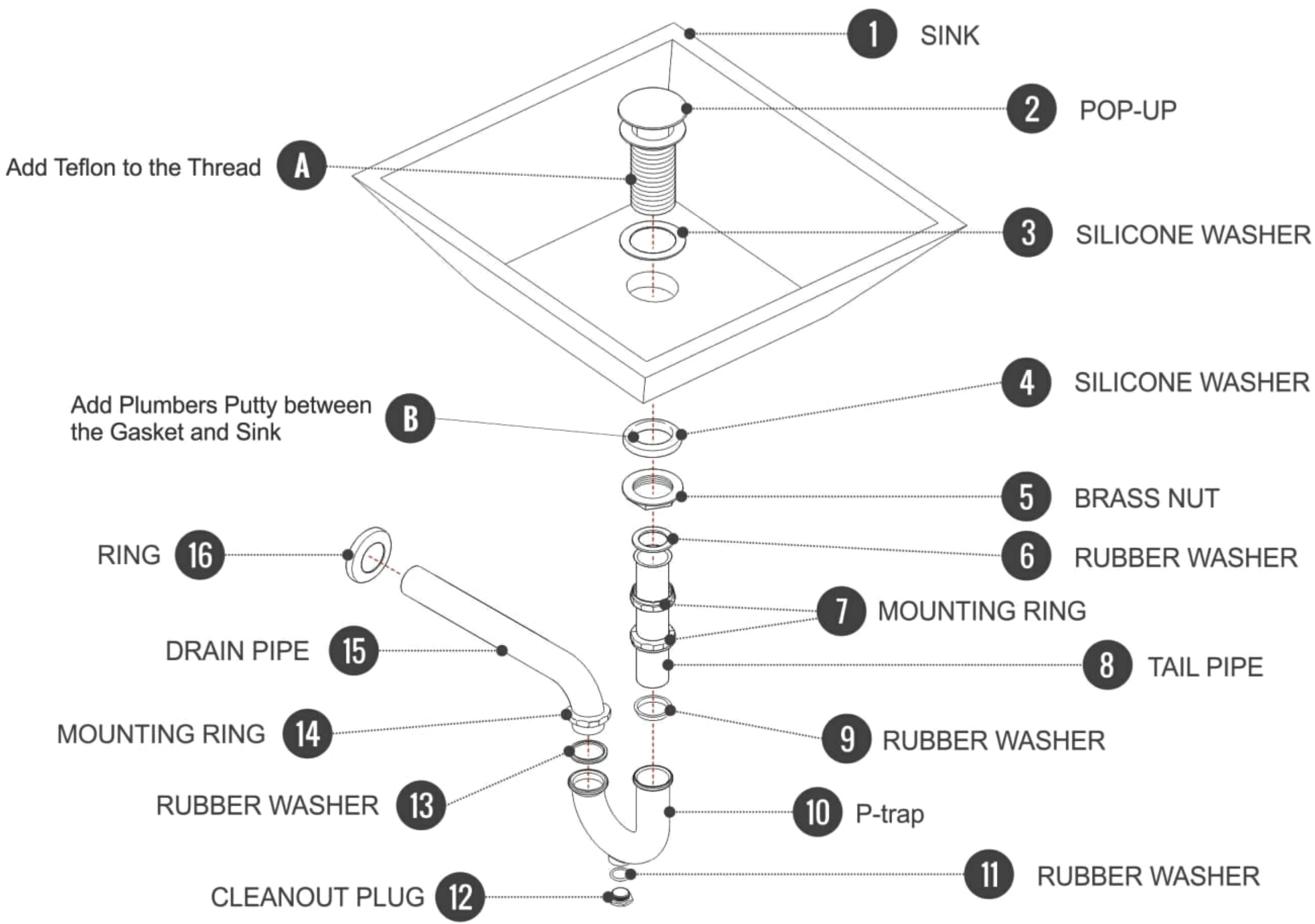


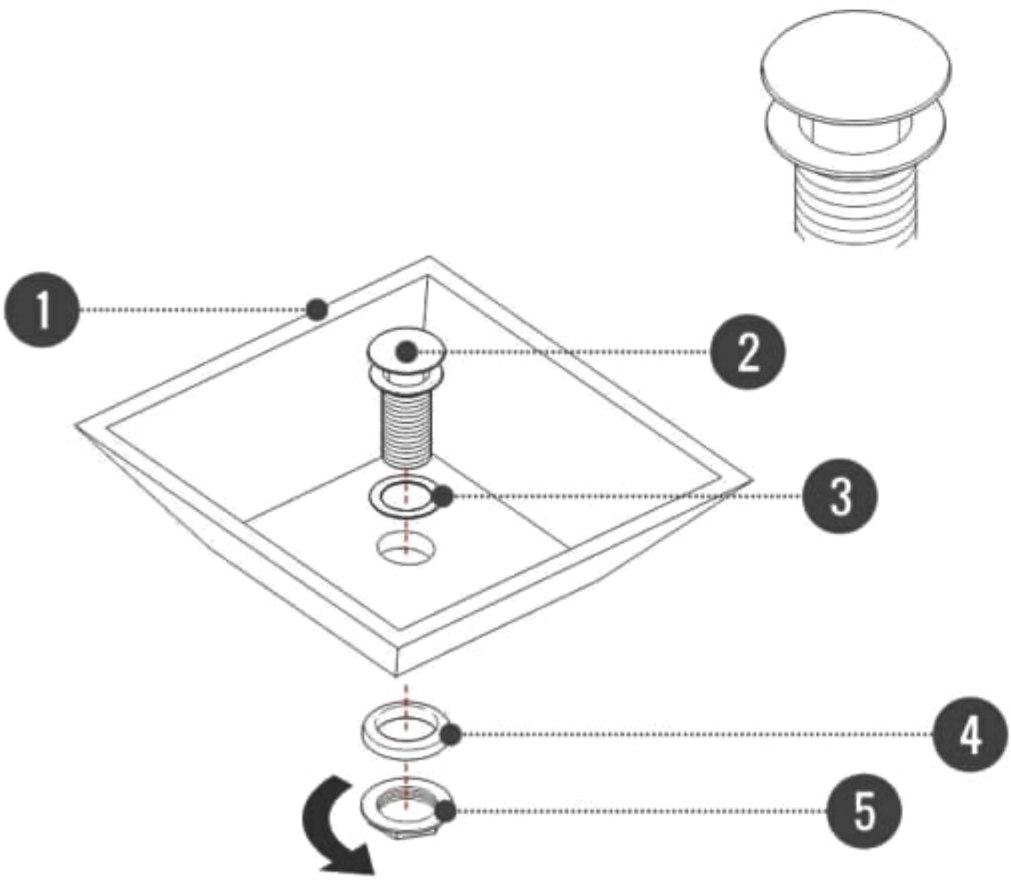
Figure 2



Pop-Up / P-trap Installation Instructions
INSTALLATION GUIDE



FOR SINKS WITHOUT OVERFLOW



OR

FOR SINKS WITHOUT OVERFLOW

